



**CATÁLOGO PEÇAS DE REPOSIÇÃO**

*Spare Parts Catalogue*

**VÁLVULAS**

*Valves*

*2024*

A Cipec iniciou suas atividades em 1983 na cidade de São Caetano, como pequeno distribuidor e fabricante de peças de reposição para caminhões e ônibus.

Trabalhando com empenho e seriedade, a Cipec rapidamente ampliou seu leque de produtos de distribuição para pouco tempo depois atingir o status de referência nacional no mercado de reposição da linha Scania.

Em 1999 sua estrutura já não comportava o ritmo crescente dos negócios e a Cipec transferiu suas atividades para uma área de 20.000 m<sup>2</sup> em Indaiatuba, localizada estrategicamente no interior paulista, investindo fortemente na parte fabril e agregando as linhas Volvo, VW, MWM, Cummins e Iveco.

Com amplo espaço fabril e novos nichos de mercado se abrindo, em 2003 a Cipec inovou mais uma vez, implantando uma completa linha de servos de embreagem, válvulas e reparos de freios para linha pesada. Nascia então a NTI, uma marca Cipec que em pouco tempo ficaria conhecida no mercado, ofertando um produto competitivo e altamente confiável.

Hoje a Cipec conta com mais de 170 colaboradores e comercializa mais de 22.000 itens a partir de sua unidade fabril localizada em Indaiatuba, aumentando ainda mais sua capacidade de produção e expedindo mais de 30 toneladas de produtos por dia para mais de 50 países em todo o mundo.

*In 1983 the city of São Caetano was the birthplace of a successful story, the story of CIPEC, a small spare parts manufacturer and distributor for trucks and buses. Through hard work and commitment, CIPEC quickly expanded its product line, after it would received national reference status for the Scania line aftermarket parts. In 1999, having outgrown its infrastructures as a result of its expansive business pace, the company transferred its activities to an area of over 20.000 square meters in the city of Indaiatuba, located strategically in the State of São Paulo. There, major investments were made in innovations and manufacturing, including some new product lines as the Volvo, VW, MWM, Cummins and Iveco.*

*With ample production space and openings in new market segments, CIPEC innovated once again in 2003 by implementing a complete line of clutch servos, valves and brake repair kits for trucks and busses. The year was also marked by the birth of NTI, a CIPEC brand that would rapidly gain market recognition for offering a competitive, highly reliable pneumatic products.*

*Today, with over 170 employees and a line range of over 22.000 items, CIPEC keeps increasing production capacity and shipping daily over 30 Tons to over 50 countries worldwide.*

*At CIPEC, quality is more than a standard we strive to reach; it is the philosophy that drives our business. The effort to satisfy our customers is constant at all levels of our company and it enables us to gain confidence and extend the longevity in our partnerships.*

CIPEC comenzó sus operaciones en 1983 en la ciudad de Sao Caetano, como un pequeño distribuidor y fabricante de piezas de repuesto para camiones y autobuses.

Trabajando con compromiso y seriedad, CIPEC rápidamente amplió su gama de productos de distribución para poco tiempo después alcanzar el status de referencia nacional en el mercado de repuestos de la línea Scania.

En 1999 su estructura ya no comportaba el ritmo creciente de los negocios, entonces CIPEC transfirió sus actividades a un área de 20.000 m<sup>2</sup> en Indaiatuba, ciudad estratégicamente ubicada en el interior, invirtiendo fuertemente en la parte industrial y agregando a su gama las líneas Volvo, VW, MWM, Cummins y Iveco.

Con un amplio espacio de fabricación y la apertura de nuevos nichos de mercado, en el año 2003 el CIPEC innovó una vez más, implementando una línea completa de servos de embrague, válvulas y reparaciones de frenos para la línea pesada. Así nació NTI, una marca CIPEC que pronto se hizo conocida en el mercado, ofreciendo un producto competitivo y altamente fiable.

Hoy Cipec cuenta con más de 170 colaboradores y comercializa más de 22.000 items desde su unidad fabril ubicada en Indaiatuba, aumentando aún más su capacidad de producción y expidiendo más de 30 toneladas de productos por día para más de 50 países en todo el mundo.



<b>SCANIA</b>	<b>3</b>
VALVULA	3
VALVULA DIVERSAS	4
<b>VOLVO</b>	<b>5</b>
VALVULA	5
VALVULA DIVERSAS	5
VALVULA SOLENOIDE	5
<b>VW</b>	<b>6</b>
VALVULA	6
VALVULA DIVERSAS	6
<b>FORD</b>	<b>7</b>
VALVULA	7
VALVULA DIVERSAS	7
VALVULA SOLENOIDE	7
<b>IVECO</b>	<b>8</b>
VALVULA	8
VALVULA TERMOSTATICA	8
<b>MERCEDES</b>	<b>9</b>
VALVULA	9
VALVULA DIVERSAS	9
<b>AGRALE</b>	<b>10</b>
VALVULA	10
VALVULA SOLENOIDE	10
<b>FREIOS</b>	<b>11</b>
VALVULA DIVERSAS	11
<b>CONTATOS</b>	<b>14</b>
<b>ÍNDICE POR CÓDIGO</b>	<b>15</b>

SCANIA	3
VALVE	3
DIVERSE VALVE	4
VOLVO	5
VALVE	5
DIVERSE VALVE	5
SOLENOID VALVE	5
VW	6
VALVE	6
DIVERSE VALVE	6
FORD	7
VALVE	7
DIVERSE VALVE	7
SOLENOID VALVE	7
IVECO	8
VALVE	8
THERMOSTATIC VALVE	8
MERCEDES	9
VALVE	9
DIVERSE VALVE	9
AGRALE	10
VALVE	10
SOLENOID VALVE	10
FREIOS	11
DIVERSE VALVE	11
CONTACTS	14
INDEX BY CODE	15

## 1.01 VALVULA VALVE

### 1111195 SAFETY VALVE

VALVULA SEGURANCA M16 X 1,50  
025864



### 1111276 SAFETY VALVE

VALVULA SEGURANCA M14 X 1,50  
025863



### 1368497 HYDRAULIC RETAINING

VALV. RETORNO DIESEL MOTOR 9L S.4  
013083  
2417413085

imagem  
indisponivel

/ P.G.R. / 94 / K94

### 136900 RELIEF VALVE WATER

VALV. ALIVIO GRAXA B'B AGUA 110  
006770



L75 / L76 / 110 / B75 / B76 /

### 1370084 FUEL VALVE S4

VALVULA COMBUSTIVEL S.4  
019811  
2417205022



K94 /

### 1379215 HYDRAULIC RETAINING

VALV. RETORNO DIESEL MOTORES 11/12/16L  
009568  
2417413092  
1917514  
1864034

imagem  
indisponivel

/ 114 / 124 / 164 / K114 / K124 / P.G.R.

### 1379383 WATER RADIATOR TUBE

VALVULA TUBO RADIADOR AGUA S.4/PRG  
014620



114 / 124 / 164 / P.G.R. / 94 /

### 1404924 THERM. VALVE

VALVULA TERMOSTATICA 114/124 80\$/87\$  
007867  
1916620  
1358995



94 / 114 / 124 / P.G.R. /

### 1404925 THERM. VALVE 80\$/75\$

VALVULA TERMOSTATICA 75\$/ 80\$ 94/114/24/  
007868  
1745449  
1347594



114 / 124 / 164 / K124 / 94 / F94 / K94 / K114 /

### 1440367 REGULATING SEAT VALVE

VALVULA REGULADORA BANCO S.4  
016608



114 / 124 / 164 / 94 /

### 154523 RETURN DIESEL VALVE

VALVULA RETORNO DIESEL =RET 1,5 KG=  
000377  
313969  
154535



T112 / T113 / F113 / R113 / K112 / R112 / F112 /  
K113 / R143 / L113 / P93 /

### 154523 A RETURN DIESEL VALVE

VALVULA RETORNO DIESEL =RET 2,0 KG=  
006790  
313969 A  
154535 A



T112 / T113 / F113 / R113 / K112 / R112 / F112 /  
K113 / R143 / L113 / P93 /

### 2160199

PIPE SOLENOID GEAR

VALVULA AGUA QUENTE P.G.R.  
025037  
1793197



### 243477 EXHAUST VALVE 114

VALVULA ESCAPE 110  
000974



L75 / L76 / 110 /

### 524942 A THERM. VALVE 79\$

VALVULA TERMOSTATICA 79\$  
001752



T112 / T113 / F113 / R113 / K112 / R112 / R142 /  
T142 / F112 / K113 / R143 / L113 / P93 /

### 525155 THERM. VALVE 75\$ LK 140

VALVULA TERMOSTATICA 75\$ LK 140  
001754



LK141 / LK140 / 111S /

### 526146 PIPE SOLENOID GEAR

CACHIMBO VALV. SOLEN. CAMBIO 112/3  
003611



T112 / T113 / F113 / R113 / K112 / R112 / R142 /  
T142 / F112 / K113 / R143 / L113 / P93 /

### 537214 PIPE BOTTLE GEAR

CACHIMBO GARRAFINHA CAMBIO 112/3  
002830  
1802127  
0005400181



T112 / T113 / F113 / R113 / K112 / R112 / R142 /  
T142 / F112 / K113 / R143 / L113 / P93 /



## 1.02 VALVULA DIVERSAS

### DIVERSE VALVE

#### 1117686 FUEL TANK BREATHING

VALVULA RESPIRO TANQUE COMB. 113/14/24

007866  
2057206  
1770297  
1423078



T113 / R113 / R143 / P93 / 114 / 124 / 164 / 94 / F94 /

#### 1342237 EXPANSION VALVE AIR

VALV. EXPANSAO AR COND. S4/P.G.R.

026019



#### 1374051 EXPANSION TANK

VALV. DISTRIB. TANQUE EXPANSAO S4

024318



#### 1797971

VALVULA TRAVA VOLANTE DIRECAO P.G.R.

023815  
2185839



#### 259100 OIL PRESSURE CONTROL

VALVULA CONTROLE PRESSAO OLEO

001066  
1333597  
1322938  
1322585



110 / 111 / T112 / T113 / F113 / R113 / K112 / R112 / F112 / K113 / L113 / 114 /

## 2.01 VALVULA

### VALVE

#### 8149182 V THERM. VALVE 71\$

VALVULA TERMOSTATICA 71\$  
007934



FM10 / F12 / FE6 USA / FE7 USA / FL7 / N10 USA  
/ N12 USA / NL10 AUS. / B10M / B58 / FL6 /

#### 85106806 V EXHAUST VALVE MWM X10

VALVULA ESCAPE MWM X10 VM  
021791



VM /

#### 85108989 V ADMISSION VALVE MWM

VALVULA ADMISSAO MWM X10 VM  
021787



VM /

## 2.02 VALVULA DIVERSAS

### DIVERSE VALVE

#### 1521249 VA GEAR SHIFT VALVE REPAIR

VALV. TAMPA CILINDRO FH/NH12  
019891  
1669421 VA  
1653380 VA  
1653072 VA



## 2.03 VALVULA SOLENOIDE

### SOLENOID VALVE

#### 21472978 V

VALV. SOLENOIDE CAMBIO 3/2 VIAS FH/FM  
026097



## 3.01 VALVULA

### VALVE

#### 2RD109601 ADMISSION VALVE MWM

VALVULA ADMISSAO MWM X10  
012732  
961084600034



7.100 / 8.100 / 8.140 / 8.140CO / 8.140CE / L.80 / 12.140T / 12.180 / 14.150 / 14.180 / 16.180CO /

#### 2RD109611 EXHAUST VALVE MWM X10

VALVULA ESCAPE MWM X10  
012733



7.100 / 8.100 / 8.140 / 8.140CO / 8.140CE / L.80 / 12.140T / 12.180 / 14.150 / 14.180 / 16.180CO /

#### 2T0130764 SOLENOID VALVE =12V=

VALVULA SOLENOIDE PARADA MOTOR=12V=  
010567



24.250 / 40.300 / 26.220 / 17.220 / 23.220 /

#### 2T020114A SOLENOID VALVE =24V=

VALVULA SOLENOIDE PARADA MOTOR=24V=  
010569  
4946641  
2T0130764A  
2T020114A



18.310 / 18.310OT /

#### 2TB130805 SOLENOID VALVE =24V=

VALVULA SOLENOIDE PARADA MOTOR=24V=  
010570  
961000780034



17.240OT / 18.310OT / 17.210OD /

#### 2U0130764 SOLENOID VALVE =12V=

VALVULA SOLENOIDE PARADA MOTOR=12V=  
010568  
4946639  
3935649  
2U0130764A  
2U0130764B



40.300 / 26.260 / 26.310 / 26.220 / 31.260 / 31.310 / 24.250 CHILE / 35.300 CHILE / 35.300 LEITO /

#### T06129611 DRY AIR CLEANER VALVE

VALVULA BORRACHA DESCARGA POEIRA  
005663



8.140CO / 8.140CE / 8.140CKD / 6.90 / 7.90S /

#### TJG130805 SOLENOID VALVE =12V=

VALVULA SOLENOIDE PARADA MOTOR=12V=  
010573



14.220 / 16.170 / 16.220 / 24.250 / 35.300 / 16.220 LEITO / 35.300H /

#### TL7129611 DRY AIR CLEANER VALVE

VALVULA BORRACHA DESCARGA POEIRA  
005662



8.140CO / 8.140CE / 8.140CKD / 7.110S /

#### TRA130805 SOLENOID VALVE =12V=

VALVULA SOLENOIDE PARADA MOTOR=12V=  
010571



14.220 / 16.170 / 16.300 / 35.300 / 40.300 / 16.220 LEITO / 40.300 LEITO / 35.300H / 16.220 CHILE /

## 3.02 VALVULA DIVERSAS

### DIVERSE VALVE

#### TRG201035 FUEL TANK BREATHING

VALVULA RESPIRO TANQUE COMB.  
005171  
2R0201136



7.100 / 8.100 / 8.140 / 8.140CO / 8.140CE / L.80 / 14.150 / 14.220 / 16.170 / 16.180CO / 16.210CO /



## 4.01 VALVULA VALVE

**BG2X9N392AA** SOLENOID VALVE =12V=  
VALVULA SOLENOIDE PARADA MOTOR=12V=  
021811



1731 / 2626 / 2631 / 4031 / 4331 / 1630 / 2425 /  
4030 / 2630 / 5031 / 2831 / 1716 ARG. / 1730

## 4.02 VALVULA DIVERSAS DIVERSE VALVE

**E8HZ9A153A** FUEL TANK BREATHING  
VALVULA RESPIRO TANQUE COMB.  
021864  
87HU9A153AA  
E5HT9A153AA  
E8HT9A153AA



815 / 1415CUM / 1317 / 1417 / 1215CUM /  
F14000HD / F12000L / 1717 / 1617 / 1722 / 1731 /

**TRG201035** FUEL TANK BREATHING  
VALVULA RESPIRO TANQUE COMB.  
005171  
87HU9A153AA  
E5HT9A153AA  
E8HT9A153AA



TODOS OS MODELOS FORD

## 4.03 VALVULA SOLENOIDE SOLENOID VALVE

**3354943** SOLENOID VALVE =12V=  
VALVULA SOLENOIDE PARADA MOTOR=12V=  
021766



1415CUM / 1215CUM / 1617 / 1722 / 1731 / 2622 /  
2626 / 2631 / 4031 / 2422 / 3222 / 1630 / 1622 /

**3921978** SOLENOID VALVE =12V=  
VALVULA SOLENOIDE PARADA MOTOR=12V=  
021743



1617 / 1722 / 1731 / 2622 / 2626 / 2422 / 1630 /  
1622 / 2425 / 1422 / 3224 / 3530 / 2322 /

## 5.01 VALVULA

### VALVE

#### 503120411 ADMISSION VALVE MWM

VALVULA ADMISSAO MWM X10 EUROARGO  
021788



EUROARGO 170E21 /

#### 503120412 EXHAUST VALVE MWM X10

VALVULA ESCAPE MWM X10  
021792



EUROARGO 170E21 /

#### 503120500 SOLENOID VALVE =24V=

VALVULA SOLENOIDE PARADA MOTOR=24V=  
020095



170E21 4X2 EUROARGO /

## 5.02 VALVULA TERMOSTATICA

### THERMOSTATIC VALVE

#### 5802055310

VALV. TERMOSTATICA MOTOR STRALIS

025604  
5801630047  
5801375230  
504238777  
504027457  
500381350



## 6.01 VALVULA VALVE

### 0004770329 RETURN DIESEL VALVE

VALVULA RETORNO DIESEL

006581  
1457413013



## 6.02 VALVULA DIVERSAS DIVERSE VALVE

### 9705400045 REDUCTION GEAR BOX

VALVULA REDUZIDA CAMBIO ATEGO

020850



ATEGO

## 7.01 VALVULA

### VALVE

#### 6007001813004 EXHAUST VALVE MWM X10

VALVULA ESCAPE MWM X10  
021793



13.000 TCA E-MEC. CAMINHAO / VOLARE  
AFRICA SUL W8-RHD / VOLARE W8 SEGUNDA

#### 6007001814002 ADMISSION VALVE MWM

VALVULA ADMISSAO MWM X10  
021789



13.000 TCA E-MEC. CAMINHAO / VOLARE  
AFRICA SUL W8-RHD / VOLARE W8 SEGUNDA

## 7.02 VALVULA SOLENOIDE

### SOLENOID VALVE

#### 6112401105009 SOLENOID VALVE =24V=

VALVULA SOLENOIDE PARADA MOTOR=24V=  
020093



## 8.01 VALVULA DIVERSAS

### DIVERSE VALVE

#### 9705400045 REDUCTION GEAR BOX

VALVULA REDUZIDA CAMBIO ATEGO

020850

4410360010



**Vendas / Sales:** vendas@cipec.com.br  
**Geral / General:** cipec@cipec.com.br  
**Televendas / Phone:** +55 19 3834-9822  
**Fax / Fax:** 0800.707.9822  
**www.cipec.com.br**



136900	3
154523	3
154523 A	3
243477	3
259100	4
524942 A	3
525155	3
526146	3
537214	3
1111195	3
1111276	3
1117686	4
1342237	4
1368497	3
1370084	3
1374051	4
1379215	3
1379383	3
1404924	3
1404925	3
1440367	3
1797971	4
2160199	3



1521249 VA	5
8149182 V	5
21472978 V	5
85106806 V	5
85108989 V	5

2RD109601	6
2RD109611	6
2T0130764	6
2T0201114A	6
2TB130805	6
2U0130764	6
T06129611	6
TJG130805	6
TL7129611	6
TRA130805	6
TRG201035	6



3354943	7
3921978	7
BG2X9N392AA	7
E8HZ9A153A	7
TRG201035	7

503120411	8
503120412	8
503120500	8
5802055310	8



0004770329 9  
9705400045 9





# ORIGINAL CODE AGRALE



6007001813004	10
6007001814002	10
6112401105009	10



Televentas: +55 19 3834.9822



+55 54 3211.1800

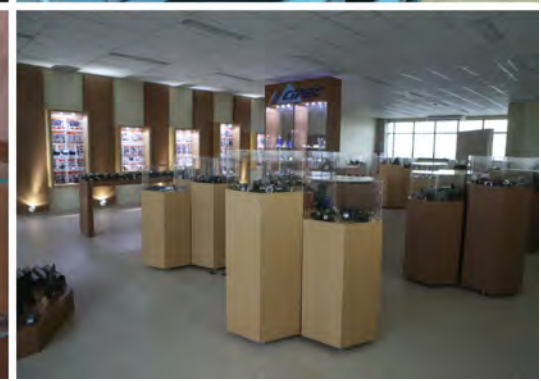
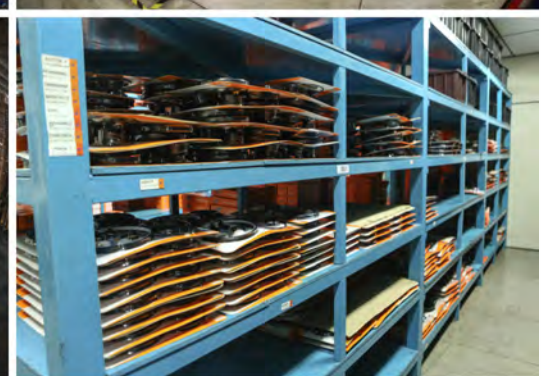
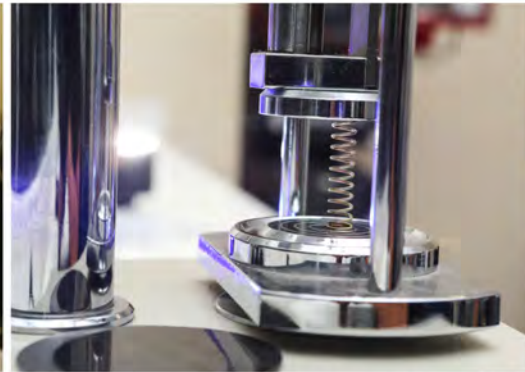


+ 55 11 2626.8839

[www.cipec.com.br](http://www.cipec.com.br)









Empresa Certificada ISO 9001:2015



**GRUPOCIPEC**