

# REPARO DE MANGA DE EIXO

Central de Atendimento:  
+55 19 3834.9822  
vendas@cipec.com.br  
www.cipec.com.br

## CATÁLOGO - PEÇAS DE REPOSIÇÃO

Spare Parts Catalogue

Catálogo de Repuestos



CIPEC INDUSTRIAL  
2024

# Empresa

## Company | La Empresa

A Cipec iniciou suas atividades em 1983 na cidade de São Caetano como um pequeno distribuidor e fabricante de peças de reposição para caminhões e ônibus. Trabalhando com empenho e seriedade, a Cipec rapidamente ampliou seu leque de produtos de distribuição, alcançando logo em seguida o status de referência nacional no mercado de reposição da linha Scania.

Em 1999, devido ao ritmo crescente dos negócios, a estrutura da Cipec já não comportava a demanda, levando a empresa a transferir suas atividades para uma área de 20.000 m<sup>2</sup> em Indaiatuba, localizada estrategicamente no interior paulista. Nesse novo local, a empresa investiu fortemente na parte fabril e agregou as linhas Volvo, VW, MWM, Cummins e Iveco.

Com amplo espaço fabril e novos nichos de mercado se abrindo, em 2003 a Cipec inovou mais uma vez, implantando uma completa linha de servos de embreagem, válvulas e reparos de freios para linha pesada. Surgiu então a NTI, uma marca Cipec que em pouco tempo ficaria conhecida no mercado, oferecendo um produto competitivo e altamente confiável.

Atualmente, a Cipec conta com mais de 170 colaboradores e comercializa mais de 22.000 itens a partir de sua unidade fabril localizada em Indaiatuba, ampliando ainda mais sua capacidade de produção e expedindo mais de 30 toneladas de produtos por dia para mais de 50 países em todo o mundo.

Cipec began its activities in 1983 in the city of São Caetano as a small distributor and manufacturer of spare parts for trucks and buses. Working with dedication and seriousness, Cipec quickly expanded its range of distribution products and soon achieved national reference status in the replacement market for the Scania line.

By 1999, its structure could no longer accommodate the growing pace of business, prompting Cipec to transfer its operations to a 20,000 m<sup>2</sup> area in Indaiatuba, strategically located in the interior of São Paulo. Strong investments were made in the manufacturing sector, and the Volvo, VW, MWM, Cummins, and Iveco lines were added.

With ample manufacturing space and new market niches emerging, Cipec innovated once again in 2003, introducing a complete line of clutch servos, valves, and brake repair kits for heavy-duty applications. Thus, NTI was born, a Cipec brand that quickly became known in the market, offering competitive and highly reliable products.

Today, Cipec employs over 170 employees and sells over 22,000 items from its manufacturing facility located in Indaiatuba, further increasing its production capacity and shipping over 30 tons of products per day to more than 50 countries worldwide.

La Cipec inició sus actividades en 1983 en la ciudad de São Caetano como un pequeño distribuidor y fabricante de repuestos para camiones y autobuses. Trabajando con dedicación y seriedad, Cipec amplió rápidamente su gama de productos de distribución y pronto alcanzó el estatus de referencia nacional en el mercado de repuestos para la línea Scania.

Para 1999, su estructura ya no podía soportar el creciente ritmo de negocios, lo que llevó a Cipec a trasladar sus operaciones a una área de 20,000 m<sup>2</sup> en Indaiatuba, estratégicamente ubicada en el interior de São Paulo. Se realizaron fuertes inversiones en el sector manufacturero y se añadieron las líneas Volvo, VW, MWM, Cummins e Iveco.

Con un amplio espacio de fabricación y nuevos nichos de mercado emergentes, Cipec innovó una vez más en 2003, introduciendo una línea completa de servos de embrague, válvulas y reparaciones de frenos para aplicaciones de servicio pesado. Así nació NTI, una marca de Cipec que rápidamente se hizo conocida en el mercado, ofreciendo productos competitivos y altamente confiables.

Hoy en día, Cipec emplea a más de 170 trabajadores y vende más de 22,000 artículos desde su planta de fabricación ubicada en Indaiatuba, aumentando aún más su capacidad de producción y enviando más de 30 toneladas de productos al día a más de 50 países en todo el mundo.





|          |    |
|----------|----|
| AGRALE   | 05 |
| DAF      | 14 |
| FORD     | 15 |
| IVECO    | 28 |
| MERCEDES | 33 |
| SCANIA   | 38 |
| VOLVO    | 42 |
| VW       | 46 |
| CONTATOS | 69 |

|          |    |
|----------|----|
| AGRALE   | 05 |
| DAF      | 14 |
| FORD     | 15 |
| IVECO    | 28 |
| MERCEDES | 33 |
| SCANIA   | 38 |
| VOLVO    | 42 |
| VW       | 46 |
| CONTACTS | 69 |



AGRALE: 6007099062001

REP. MANGA CPL. P/1LD.=BRAS= 28,65X181,5 =STD=

KING PIN KIT 28,65X181,5 =STD=

CIPEC: 020052

VW: 2RD498629 / 805656

AGRALE | 4000D | 4000D A6 MICRO | 4500D | 4500D A6 MICRO | 5000D | 5000D A6 MICRO |  
VOLARE ELETRONICO V8 MWM | VOLARE V6 2005 | VOLARE V8 PRIMEIRA EDICAO



AGRALE: 6007099062001 10

REP. MANGA CPL. P/1LD.=BRAS= 28,75X181,5 =0,10=

KING PIN KIT 28,75X181,5 =0,10=

CIPEC: 021363

VW: 2RD498629 10 / 805665 10

AGRALE | 4000D | 4000D A6 MICRO | 4500D | 4500D A6 MICRO | 5000D | 5000D A6 MICRO |  
VOLARE ELETRONICO V8 MWM | VOLARE V6 2005 | VOLARE V8 PRIMEIRA EDICAO



AGRALE: 6007099062001 20

REP. MANGA CPL. P/1LD.=BRAS= 28,85X181,5 =0,20=

KING PIN KIT 28,85X181,5 =0,20=

AGRALE: BF5T311E 20

CIPEC: 021355

VW: 2RD498629 20 / 805665 20

AGRALE | 4000D | 4000D A6 MICRO | 4500D | 4500D A6 MICRO | 5000D | 5000D A6 MICRO |  
VOLARE ELETRONICO V8 MWM | VOLARE V6 2005 | VOLARE V8 PRIMEIRA EDICAO | FORD |  
CARGO 814 1996 ATE 2000 | F4000 4BT CUMMINS TURBO 4BT | F4000 MWM 229 | F4000 MWM 4.  
3L TURBO | F4000 MWM NA



AGRALE: 6007099062001 30

REP. MANGA CPL. P/1LD.=BRAS= 28,95X181,5 =0,30=

KING PIN KIT 28,95X181,5 =0,30=

CIPEC: 021369

VW: 2RD498629 30

AGRALE | 4000D | 4000D A6 MICRO | 4500D | 4500D A6 MICRO | 5000D | 5000D A6 MICRO |  
VOLARE ELETRONICO V8 MWM | VOLARE V6 2005 | VOLARE V8 PRIMEIRA EDICAO



AGRALE: 6007099062001CH

REP. MANGA CPL. P/1LD.=BRAS= 28,65X181,5 =STD=

KING PIN KIT 28,65X181,5 =STD=

CIPEC: 021374

VW: 2RD498629CH

AGRALE | 4000D | 4000D A6 MICRO | 4500D | 4500D A6 MICRO | 5000D | 5000D A6 MICRO |  
VOLARE ELETRONICO V8 MWM | VOLARE V8 PRIMEIRA EDICAO



AGRALE: 6007099062001CH 10

REP. MANGA CPL. P/1LD.=BRAS= 28,75X181,5 =0,10=

KING PIN KIT 28,75X181,5 =0,10=

CIPEC: 021384

VW: 2RD498629CH 10

AGRALE | 4000D | 4000D A6 MICRO | 4500D | 4500D A6 MICRO | 5000D | 5000D A6 MICRO |  
VOLARE ELETRONICO V8 MWM | VOLARE V8 PRIMEIRA EDICAO



AGRALE: 6007099062001CH 20

REP. MANGA CPL. P/1LD.=BRAS=28,85X181,5 =0,20=

KING PIN KIT 28,85X181,5 =0,20=

CIPEC: 021447

VW: 2RD498629CH 20

AGRALE | 4000D | 4000D A6 MICRO | 4500D | 4500D A6 MICRO | 5000D | 5000D A6 MICRO |  
VOLARE ELETRONICO V8 MWM | VOLARE V8 PRIMEIRA EDICAO



AGRALE: 6007099062001CH 30

REP. MANGA CPL. P/1LD.=BRAS= 28,95X181,5 =0,30=

KING PIN KIT 28,95X181,5 =0,30=

CIPEC: 021381

VW: 2RD498629CH 30

AGRALE | 4000D | 4000D A6 MICRO | 4500D | 4500D A6 MICRO | 5000D | 5000D A6 MICRO |  
VOLARE ELETRONICO V8 MWM | VOLARE V8 PRIMEIRA EDICAO



AGRALE: 6007099068008

REP. MANGA CPL. P/1LD.=MERITOR= 31,35MM =STD=

KING PIN KIT =MERITOR= 31,35MM =STD=

CIPEC: 021320  
VW: 2R0498629 / 805709

AGRALE | VOLARE A8 | VOLARE AFRICA SUL W8-RHD | VOLARE W12 MA 12000 MWM 4.12TCE 185CV | VOLARE W8 SEGUNDA EDICAO | FORD | F11000 | F13000 | F600/F13000 APOS 1972 ATE 1992



AGRALE: 6007099068008 10

REP. MANGA CPL. P/1LD.=MERITOR= 31,45MM =0,10=

KING PIN KIT =MERITOR= 31,45MM =0,10=

CIPEC: 021343  
FORD: BD2T3111 10  
VW: 2R0498629 10

AGRALE | VOLARE A8 | VOLARE AFRICA SUL W8-RHD | VOLARE W8 SEGUNDA EDICAO | FORD | F11000 | F13000 | F600/F13000 APOS 1972 ATE 1992



AGRALE: 6007099068008 20

REP. MANGA CPL. P/1LD.=MERITOR= 31,55MM =0,20=

KING PIN KIT =MERITOR= 31,55MM =0,20=

CIPEC: 024240  
VW: 2R0498629 20

AGRALE | VOLARE A8 | VOLARE AFRICA SUL W8-RHD | VOLARE W8 SEGUNDA EDICAO | FORD | F11000 | F13000 | F600/F13000 APOS 1972 ATE 1992



AGRALE: 6007099068008 30

REP. MANGA CPL. P/1LD.=MERITOR= 31,65MM =0,30=

KING PIN KIT =MERITOR= 31,65MM =0,30=

CIPEC: 024241  
VW: 2R0498629 30

AGRALE | VOLARE A8 | VOLARE AFRICA SUL W8-RHD | VOLARE W8 SEGUNDA EDICAO | FORD | F11000 | F13000 | F600/F13000 APOS 1972 ATE 1992





AGRALE: 6012008059007JG

REP. MANGA CPL. P/1LD.=MERITOR= 40,80MM =STD=

KING PIN KIT 40,80MM =MERITOR= =STD=

CIPEC: 023708  
VW: 805795

AGRALE | VOLARE W12 MA 12000 MWM 4.12TCE 185CV



AGRALE: 6012008059007JG 10

REP. MANGA CPL. P/1LD.=MERITOR= 40,90MM =0,10=

KING PIN KIT =MERITOR= 40,80MM =0,10=

CIPEC: 023703  
VW: 805795 10

AGRALE | VOLARE W12 MA 12000 MWM 4.12TCE 185CV



AGRALE: 6012008059007JG 20

REP. MANGA CPL. P/1LD.=MERITOR= 41,00MM =0,20=

KING PIN KIT 41,00MM =MERITOR= =0,20=

CIPEC: 023709  
VW: 807795 20

AGRALE | VOLARE W12 MA 12000 MWM 4.12TCE 185CV



AGRALE: 6012008059007JG 30

REP. MANGA CPL. P/1LD.=MERITOR= 41,10MM =0,30=

KING PIN KIT 41,10MM =MERITOR= =0,30=

CIPEC: 023711  
VW: 805795 30

AGRALE | VOLARE W12 MA 12000 MWM 4.12TCE 185CV



AGRALE: 6012099002007

REP. MANGA CPL. P/1LD.=SIFCO=45,55X264,5 =STD=

KING PIN KIT SIFCO 2 SIDES =STD= 45,55X264,5

CIPEC: 021416  
 FORD: BF5X3111G / BF5X3111L  
 VW: 2VF498629 / TAR498629  
 AGRALE | MA 12.0 MIDIBUS | MA 15.0 MIDIBUS | MA 17.0 MIDIBUS



AGRALE: 6012099002007 10

REP. MANGA CPL. P/1LD.=SIFCO=45,65X264,5 =0,10=

KING PIN KIT COMPLETE SIFCO 2 SIDES-STD 45,65X264

CIPEC: 021434  
 FORD: BF5X3111G 10  
 VW: TAR498629 10  
 AGRALE | MA 12.0 MIDIBUS | MA 15.0 MIDIBUS | MA 17.0 MIDIBUS



AGRALE: 6012099002007 20

REP. MANGA CPL. P/1LD.=SIFCO=45,75X264,5 =0,20=

KING PIN KIT COMPLETE SIFCO 2 SIDES-STD 45,75X264,

CIPEC: 021436  
 FORD: BF5X3111G 20  
 VW: 2VF498629 20 / TAR498629 20  
 AGRALE | MA 12.0 MIDIBUS | MA 15.0 MIDIBUS | MA 17.0 MIDIBUS



AGRALE: 6012099002007 30

REP. MANGA CPL. P/1LD.=SIFCO=45,85X264,5 =0,30=

KING PIN KIT COMPLETE SIFCO 2 SIDES-STD 45,85X264,

CIPEC: 021429  
 FORD: BF5X3111G 30  
 VW: 2VF498629 30 / TAR498629 30  
 AGRALE | MA 12.0 MIDIBUS | MA 15.0 MIDIBUS | MA 17.0 MIDIBUS



AGRALE: 6012099002007CH 0

REP. MANGA CPL. P/1LD.=SIFCO=45,55X264,5 =STD=

KING PIN KIT SIFCO 2 SIDES =STD= 45,55X264,5

CIPEC: 022214  
 FORD: BF5X3111CH 0 / BF5X3111LCH 0  
 VW: 2VF498629CH  
 AGRALE | MA 12.0 MIDIBUS | MA 15.0 MIDIBUS | MA 17.0 MIDIBUS



AGRALE: 6012099002007CH 10

REP. MANGA CPL. P/1LD.=SIFCO=45,65X264,5 =0,10=

KING PIN KIT COMPLETE SIFCO 2 SIDES-STD 45,65X264

CIPEC: 022209  
 FORD: BF5X3111CH 10 / BF5X3111LCH 10  
 VW: 2VF498629CH 10  
 AGRALE | MA 12.0 MIDIBUS | MA 15.0 MIDIBUS | MA 17.0 MIDIBUS



AGRALE: 6012099002007CH 20

REP. MANGA CPL. P/1LD.=SIFCO=45,75X264,5 =0,20=

KING PIN KIT COMPLETE SIFCO 2 SIDES-STD 45,75X264,

CIPEC: 022212  
 FORD: BF5X3111CH 20 / BF5X3111LCH 20  
 VW: 2VF498629CH 20  
 AGRALE | MA 12.0 MIDIBUS | MA 15.0 MIDIBUS



AGRALE: 6012099002007CH 30

REP. MANGA CPL. P/1LD.=SIFCO=45,85X264,5 =0,30=

KING PIN KIT COMPLETE SIFCO 2 SIDES-STD 45,85X264,

CIPEC: 021955  
 FORD: BF5X3111CH 30 / BF5X3111LCH 30  
 VW: 2VF498629CH 30  
 AGRALE | MA 12.0 MIDIBUS | MA 15.0 MIDIBUS | MA 17.0 MIDIBUS





**AGRALE: W08498629**

REP. MANGA CPL. P/2LD.=MERITOR= 31,75MM =STD=

KING PIN REPAIR KIT COMPLETE RH MERITOR 31,75MM SD

CIPEC: 024399

AGRALE | 9200 | MA 10.0 MICROBUS | MA 10.0 TCE | MA 8.5/9.2 E-TRONIC | MA 8.7 MICROBUS | MA 9.2 TCA | MA 9.2 TCE



**AGRALE: W09498629 0**

REP. MANGA CPL. P/1LD.=SIFCO= 33,00X169,3 =STD=

KING PIN KIT =SIFCO= 33,00X169,3 =STD=

CIPEC: 024164

AGRALE | 10.000 4,8H MWM EURO V SEM ABS | 10.000 4,8H MWM EURO V COM ABS | MA 10.0 BL MWM 4,8H EURO V | MA 9.2 BL MWM 4,8H EURO V | VOLARE FLY W9 LIMOUSINE EURO III | VOLARE V8 EURO V CUMMINS ISF 3,8 | VOLARE W8 2005 | VOLARE W9 2010 | VOLARE W9 2012 | VOLARE W9 ELETTRONICO | VOLARE W9 FLY-EURO V



**AGRALE: W09498629 10**

REP. MANGA CPL. P/1LD.=SIFCO= 33,10X169,3 =0,10=

KING PIN KIT =SIFCO= 33,10X169,3 =0,10=

CIPEC: 024161

AGRALE | 10.000 4,8H MWM EURO V SEM ABS | 10.000 4,8H MWM EURO V COM ABS | VOLARE FLY W9 LIMOUSINE EURO III | VOLARE V8 EURO V CUMMINS ISF 3,8 | VOLARE W9 2012 | VOLARE W9 ELETTRONICO | VOLARE W9 FLY-EURO V



**AGRALE: W09498629 20**

REP. MANGA CPL. P/1LD.=SIFCO= 33,20X169,3 =0,20=

KING PIN KIT =SIFCO= 33,20X169,3 =0,20=

CIPEC: 024156

AGRALE | 10.000 4,8H MWM EURO V SEM ABS | 10.000 4,8H MWM EURO V COM ABS | VOLARE FLY W9 LIMOUSINE EURO III | VOLARE V8 EURO V CUMMINS ISF 3,8 | VOLARE W9 2012 | VOLARE W9 ELETTRONICO | VOLARE W9 FLY-EURO V



AGRALE: W09498629 30

REP. MANGA CPL. P/1LD.=SIFCO= 33,30X169,3 =0,30=

KING PIN KIT =SIFCO= 33,30X169,3 =0,30=

CIPEC: 024153

AGRALE | 10.000 4,8H MWM EURO V SEM ABS | 10.000 4.8H MWM EURO V COM ABS | VOLARE FLY W9 LIMOUSINE EURO III | VOLARE V8 EURO V CUMMINS ISF 3,8 | VOLARE W9 2012 | VOLARE W9 ELETRONICO | VOLARE W9 FLY-EURO V



AGRALE: W09498629 40

REP. MANGA CPL. P/1LD.=SIFCO= 33,40X169,3 =0,40=

KING PIN KIT =SIFCO= 33,40X169,3 =0,40=

CIPEC: 024158

AGRALE | 10.000 4,8H MWM EURO V SEM ABS | 10.000 4.8H MWM EURO V COM ABS | VOLARE FLY W9 LIMOUSINE EURO III | VOLARE V8 EURO V CUMMINS ISF 3,8 | VOLARE W9 2012 | VOLARE W9 ELETRONICO | VOLARE W9 FLY-EURO V



AGRALE: W09498629CH 0

REP. MANGA CPL. P/1LD.=SIFCO= 33,00X169,3 =STD=

KING PIN KIT =SIFCO= 33,00X169,3 =STD=

CIPEC: 024162

AGRALE | VOLARE FLY W9 LIMOUSINE EURO III | VOLARE W9 2012 | VOLARE W9 ELETRONICO | VOLARE W9 FLY-EURO V



AGRALE: W09498629CH 10

REP. MANGA CPL. P/1LD.=SIFCO= 33,10X169,3 =0,10=

KING PIN KIT =SIFCO= 33,10X169,3 =0,10=

CIPEC: 024150

AGRALE | VOLARE FLY W9 LIMOUSINE EURO III | VOLARE W9 2012 | VOLARE W9 ELETRONICO | VOLARE W9 FLY-EURO V



AGRALE: W09498629CH 20

REP. MANGA CPL. P/1LD.=SIFCO= 33,20X169,3 =0,20=

KING PIN KIT =SIFCO= 33,20X169,3 =0,20=

CIPEC: 024154

AGRALE | VOLARE FLY W9 LIMOUSINE EURO III | VOLARE W9 2012 | VOLARE W9 ELETRONICO  
| VOLARE W9 FLY-EURO V



AGRALE: W09498629CH 30

REP. MANGA CPL. P/1LD.=SIFCO= 33,30X169,3 =0,30=

KING PIN KIT =SIFCO= 33,30X169,3 =0,30=

CIPEC: 024160

AGRALE | VOLARE FLY W9 LIMOUSINE EURO III | VOLARE W9 2012 | VOLARE W9 ELETRONICO  
| VOLARE W9 FLY-EURO V



AGRALE: W09498629CH 40

REP. MANGA CPL. P/1LD.=SIFCO= 33,40X169,3 =0,40=

KING PIN KIT =SIFCO= 33,40X169,3 =0,40=

CIPEC: 024157

AGRALE | VOLARE FLY W9 LIMOUSINE EURO III | VOLARE W9 2012 | VOLARE W9 ELETRONICO  
| VOLARE W9 FLY-EURO V

imagem  
indisponível



DAF: 681706

REPARO MANGA EIXO DAF

KING PIN REP.KIT FOR DAF CF/XF ALL W/BRAKE SHOES

CIPEC: 026544

DAF | CF TODOS FREIO A TAMBOR | XF TODOS FREIO A TAMBOR



**FORD: 1C453111A**

REP. MANGA CPL. P/1LD.=SIFCO= 33,00X169,3 =STD=

KING PIN KIT =SIFCO= 33,00X169,3 =STD=

CIPEC: 022097  
VW: 2RF498629

FORD | 712 | 814/815 11/2000=09/2002 | 815 | 815 MULTIUSO | 815E | 815S | 816 | 915



**FORD: 1C453111A 10**

REP. MANGA CPL. P/1LD.=SIFCO= 33,10X169,3 =0,10=

KING PIN KIT =SIFCO= 33,10X169,3 =0,10=

CIPEC: 022061  
VW: 2RF498629 10

FORD | 712 | 814/815 11/2000=09/2002 | 815 | 815 MULTIUSO | 815E | 815S | 816 | 915



**FORD: 1C453111A 20**

REP. MANGA CPL. P/1LD.=SIFCO= 33,20X169,3 =0,20=

KING PIN KIT =SIFCO= 33,20X169,3 =0,20=

CIPEC: 021595  
VW: 2RF498629 20

FORD | 712 | 814/815 11/2000=09/2002 | 815 | 815 MULTIUSO | 815E | 815S | 816 | 915



**FORD: 1C453111A 30**

REP. MANGA CPL. P/1LD.=SIFCO= 33,30X169,3 =0,30=

KING PIN KIT =SIFCO= 33,30X169,3 =0,30=

CIPEC: 022038  
VW: 2RF498629 30

FORD | 712 | 814/815 11/2000=09/2002 | 815 | 815 MULTIUSO | 815E | 815S | 816 | 915



**FORD: 1C453111A 40**

REP. MANGA CPL. P/1LD.=SIFCO= 33,40X169,3 =0,40=

KING PIN KIT =SIFCO= 33,40X169,3 =0,40=

CIPEC: 022040

VW: 2RF498629 40

FORD | 712 | 814/815 11/2000=09/2002 | 815 | 815 MULTIUSO | 815E | 815S | 816 | 915



**FORD: 1C453111ACH 0**

REP. MANGA CPL. P/1LD.=SIFCO= 33,00 =STD= C/CHIME

KING PIN KIT =SIFCO= 33,00X169,3 =STD=

CIPEC: 022046

FORD | 712 | 814/815 11/2000=09/2002 | 815 | 815 MULTIUSO | 815E | 815S | 816 | 915



**FORD: 1C453111ACH 10**

REP. MANGA CPL. P/1LD.=SIFCO= 33,10 =0,10= C/CHIME

KING PIN KIT =SIFCO= 33,10X169,3 =0,10=

CIPEC: 022100

FORD | 712 | 814/815 11/2000=09/2002 | 815 | 815 MULTIUSO | 815E | 815S | 816 | 915



**FORD: 1C453111ACH 20**

REP. MANGA CPL. P/1LD.=SIFCO= 33,20 =0,20= C/CHIME

KING PIN KIT =SIFCO= 33,20X169,3 =0,20=

CIPEC: 022071

FORD | 712 | 814/815 11/2000=09/2002 | 815 | 815 MULTIUSO | 815E | 815S | 816 | 915





**FORD: 1C453111ACH 30**

REP. MANGA CPL. P/1LD.=SIFCO= 33,30 =0,30= C/CHIME

KING PIN KIT =SIFCO= 33,30X169,3 =0,30=

CIPEC: 022076

FORD | 712 | 814/815 11/2000=09/2002 | 815 | 815 MULTIUSO | 815E | 815S | 816 | 915



**FORD: 1C453111ACH 40**

REP. MANGA CPL. P/1LD.=SIFCO= 33,40 =0,40= C/CHIME

KING PIN KIT =SIFCO= 33,40X169,3 =0,40=

CIPEC: 022062

FORD | 712 | 814/815 11/2000=09/2002 | 815 | 815 MULTIUSO | 815E | 815S | 816 | 915



**FORD: BD2T3111A**

REP. MANGA CPL. P/1LDS.=MERITOR= 31,35MM =STD=

KING PIN KINT MERITOR 31,35MM =STD=

CIPEC: 020071

VW: 2R0498629 / 805709

FORD | F600/F13000 APOS 1972 ATE 1992



**FORD: BD2T3111A 10**

REP. MANGA CPL. P/1LD.=MERITOR= 31,45MM =0,10=

KING PIN KIT =MERITOR= 31,45MM =0,10=

CIPEC: 022614

FORD: BD2T3111 10

VW: 2R0498629 10

FORD | F600/F13000 APOS 1972 ATE 1992



**FORD: BD2T3111A 20**

REP. MANGA CPL. P/1LD.=MERITOR= 31,55MM =0,20=

KING PIN KIT =MERITOR= 31,55MM =0,20=

CIPEC: 021342  
 VW: 2R0498629 20  
 FORD | F600/F13000 APOS 1972 ATE 1992



**FORD: BD2T3111A 30**

REP. MANGA CPL. P/1LD.=MERITOR= 31,65MM =0,30=

KING PIN KIT =MERITOR= 31,65MM =0,30=

CIPEC: 021354  
 VW: 2R0498629 30  
 FORD | F600/F13000 APOS 1972 ATE 1992



**FORD: BD2T3111ACH**

REP. MANGA CPL. P/1LD.=MERITOR= 31,35MM =STD=

KING PIN REPAIR RIT COMPLETE RH MERITOR 31,5MM SDT

CIPEC: 024665  
 VW: 2R0498629CH 0  
 FORD



**FORD: BD2T3111ACH 10**

REP. MANGA CPL. P/1LD.=MERITOR= 31,45MM =0,10=

KING PIN REP. KIT COMPLETE RH MERITOR31,45MMM0,010

CIPEC: 024667  
 VW: 2R0498629CH 10  
 FORD



**FORD: BD2T3111ACH 20**

REP. MANGA CPL. P/1LD.=MERITOR= 31,55MM =0,20=

CIPEC: 024663  
VW: 2R0498629CH 20  
FORD



**FORD: BD2T3111ACH 30**

REP. MANGA CPL. P/1LD.=MERITOR= 31,65MM =0,30=

CIPEC: 024666  
VW: 2R0498629CH 30  
FORD



**FORD: BE9H3111A 0**

REP. MANGA CPL. P/1LD.=MERITOR= 40,80MM =STD= AXLE REPAIR KIT COMPLETE FOR 1 SIDE =STD=40,80MM

CIPEC: 022001  
FORD: BF5X3111B 0  
FORD | 1215 FNH | 1215CUM | 1217 CUMMINS | 1316 | 1316 CHILE | 1317 | F14000HD



**FORD: BE9H3111A 10**

REP. MANGA CPL. P/1LD.=MERITOR= 40,90MM =0,10= AXLE REPAIR KIT COMPLETE FOR 1 SIDE 40,90MM =0,10=

CIPEC: 022035  
FORD: BF5X3111B 10  
FORD | 1215 FNH | 1215CUM | 1217 CUMMINS | 1316 | 1316 CHILE | 1317 | F14000HD



**FORD: BE9H3111A 20**

REP. MANGA CPL. P/1LD.=MERITOR= 41,00MM =0,20=

AXLE REPAIR KIT COMPLETE FOR 1 SIDE 41,00MM =0,20=

CIPEC: 021970  
 FORD: BF5X3111B 20  
 FORD | 1215 FNH | 1215CUM | 1217 CUMMINS | 1316 | 1316 CHILE | 1317 | F14000HD



**FORD: BE9H3111A 30**

REP. MANGA CPL. P/1LD.=MERITOR= 41,10MM =0,30=

AXLE REPAIR KIT COMPLETE FOR 1 SIDE 41,10MM =0,30=

CIPEC: 022168  
 FORD: BF5X3111B 30  
 FORD | 1215 FNH | 1215CUM | 1217 CUMMINS | 1316 | 1316 CHILE | 1317 | F14000HD



**FORD: BE9H3111ACH 0**

REP. MANGA CPL. P/1LD.=MERITOR= 40,80X233MM =STD=

KING PIN KIT =MERITOR= 40,80X233MM =STD=

CIPEC: 023757  
 FORD | 1215 FNH | 1215CUM | 1217 CUMMINS | 1316 | 1316 CHILE | 1317 | F14000HD



**FORD: BE9H3111ACH 10**

REP. MANGA CPL. P/1LD.=MERITOR= 40,90X233MM =0,10=

KING PIN KIT =MERITOR= 40,90X233MM =0,10=

CIPEC: 023748  
 FORD | 1215 FNH | 1215CUM | 1217 CUMMINS | 1316 | 1316 CHILE | 1317 | F14000HD



**FORD: BE9H3111ACH 20**

REP. MANGA CPL. P/1LD.=MERITOR= 41,00MM =0,20=

KING PIN KIT =MERITOR= 41,00MM =0,20=

CIPEC: 023692  
 FORD: BF5X3111BCH 20  
 FORD | 1215 FNH | 1215CUM | 1217 CUMMINS | 1316 | 1316 CHILE | 1317 | F14000HD



**FORD: BE9H3111ACH 30**

REP. MANGA CPL. P/1LD.=MERITOR= 41,10X233MM =0,30=

KING PIN KIT =MERITOR= 41,10X233MM =0,30=

CIPEC: 023740  
 FORD | 1215 FNH | 1215CUM | 1217 CUMMINS | 1316 | 1316 CHILE | 1317 | F14000HD



**FORD: BE9H3111B**

REP. MANGA CPL. P/1LD.=BRAS= 45,55X256,5 =STD=

KING PIN KIT 45,55X256,5 =STD=

CIPEC: 021327  
 FORD | 1617 CARGO 23/01/91 A 05/11/2000 | 1621 | 1621 BR | 1622 | 1630



**FORD: BE9H3111B 10**

REP. MANGA CPL. P/1LD.=BRAS= 45,65X256,5 =0,10=

KING PIN KIT 45,65X256,5 =0,10=

CIPEC: 021316  
 FORD | 1617 CARGO 23/01/91 A 05/11/2000 | 1621 | 1621 BR | 1622 | 1630





**FORD: BE9H3111B 20**

REP. MANGA CPL. P/1LD.=BRAS= 45,75X256,5 =0,20=

KING PIN KIT 45,75X256,5 =0,20=

CIPEC: 021308

FORD | 1617 CARGO 23/01/91 A 05/11/2000 | 1621 | 1621 BR | 1622 | 1630



**FORD: BE9H3111B 30**

REP. MANGA CPL. P/1LD.=BRAS= 45,85X256,5 =0,30=

KING PIN KIT 45,85X256,5 =0,30=

CIPEC: 021330

FORD | 1617 CARGO 23/01/91 A 05/11/2000 | 1621 | 1621 BR | 1622 | 1630



**FORD: BE9H3111BCH**

REP. MANGA CPL. P/1LD.=BRAS= 45,55X256,5 =STD=

KING PIN KIT 45,55X256,5 =STD=

CIPEC: 022473

FORD | 1617 CARGO 23/01/91 A 05/11/2000 | 1621 | 1621 BR | 1622 | 1630



**FORD: BE9H3111BCH 10**

REP. MANGA CPL. P/1LD.=BRAS= 45,65X256,5 =0,10=

KING PIN KIT 45,65X256,5 =0,10=

CIPEC: 022472

FORD | 1617 CARGO 23/01/91 A 05/11/2000 | 1621 | 1621 BR | 1622 | 1630



**FORD: BE9H3111BCH 20**

REP. MANGA CPL. P/1LD.=BRAS= 45,75X256,5 =0,20=

KING PIN KIT 45,75X256,5 =0,20=

CIPEC: 022475

FORD | 1617 CARGO 23/01/91 A 05/11/2000 | 1621 | 1621 BR | 1622 | 1630



**FORD: BE9H3111BCH 30**

REP. MANGA CPL. P/1LD.=BRAS= 45,85X256,5 =0,30=

KING PIN KIT 45,85X256,5 =0,30=

CIPEC: 022474

FORD | 1617 CARGO 23/01/91 A 05/11/2000 | 1621 | 1621 BR | 1622 | 1630



**FORD: BF5T3111E**

REP. MANGA CPL. P/1LD.=BRAS= 28,65X181,5 =STD=

KING PIN KIT 28,65X181,5 =STD=

CIPEC: 021312

VW: 2RD498629 / 805656

FORD | CARGO 814 1996 ATE 2000 | F4000 4BT CUMMINS TURBO 4BT | F4000 MWM 229 | F4000 MWM 4.3L TURBO | F4000 MWM NA



**FORD: BF5T3111E 10**

REP. MANGA CPL. P/1LD.=BRAS= 28,75X181,5 =0,10=

KING PIN KIT 28,75X181,5 =0,10=

CIPEC: 021362

VW: 2RD498629 10 / 805665 10

FORD | CARGO 814 1996 ATE 2000 | F4000 4BT CUMMINS TURBO 4BT | F4000 MWM 229 | F4000 MWM 4.3L TURBO | F4000 MWM NA



**FORD: BF5T3111E 30**

REP. MANGA CPL. P/1LD.=BRAS= 28,95X181,5 =0,30=

KING PIN KIT 28,95X181,5 =0,30=

CIPEC: 021368

VW: 2RD498629 30

FORD | CARGO 814 1996 ATE 2000 | F4000 4BT CUMMINS TURBO 4BT | F4000 MWM 229 | F4000 MWM 4.3L TURBO | F4000 MWM NA



**FORD: BF5T3111ECH**

REP. MANGA CPL. P/1LD.=BRAS= 28,65X181,5 =STD=

KING PIN KIT 28,65X181,5 =STD=

CIPEC: 021373

VW: 2RD498629CH

FORD | CARGO 814 1996 ATE 2000 | F4000 4BT CUMMINS TURBO 4BT | F4000 MWM 229 | F4000 MWM 4.3L TURBO | F4000 MWM NA



**FORD: BF5T3111ECH 10**

REP. MANGA CPL. P/1LD.=BRAS= 28,75X181,5 =0,10=

KING PIN KIT 28,75X181,5 =0,10=

CIPEC: 021383

VW: 2RD498629CH 10

FORD | CARGO 814 1996 ATE 2000 | F4000 4BT CUMMINS TURBO 4BT | F4000 MWM 229 | F4000 MWM 4.3L TURBO | F4000 MWM NA



**FORD: BF5T3111ECH 20**

REP. MANGA CPL. P/1LD.=BRAS= 28,85X181,5 =0,20=

KING PIN KIT 28,85X181,5 =0,20=

CIPEC: 021446

VW: 2RD498629CH 20

FORD | CARGO 814 1996 ATE 2000 | F4000 4BT CUMMINS TURBO 4BT | F4000 MWM 229 | F4000 MWM 4.3L TURBO | F4000 MWM NA



**FORD: BF5T3111ECH 30**

REP. MANGA CPL. P/1LD.=BRAS= 28,95X181,5 =0,30=

KING PIN KIT 28,95X181,5 =0,30=

CIPEC: 021380

VW: 2RD498629CH 30

FORD | CARGO 814 1996 ATE 2000 | F4000 4BT CUMMINS TURBO 4BT | F4000 MWM 229 | F4000 MWM 4.3L TURBO | F4000 MWM NA



**FORD: BF5X3111**

REP. MANGA CPL. P/1LD.=SIFCO=45,55X264,5 =STD=

KING PIN KIT SIFCO 2 SIDES =STD= 45,55X264,5

CIPEC: 021415

FORD: BF5X3111G / BF5X3111L

VW: 2VF498629 / TAR498629

FORD | 1215CUM | 1217 CUMMINS | 1316 CHILE | 1317 | 1317E 4X2 | 1415CUM | 1415FNH | 1417 CUMMINS | 1419 | 1421 | 1422 | 1517 4X2 | 1517E 4X2 | 1519 4X2 | 1521 | 1617 | 1621 BR | 1622 | 1630 | 1716 ARG. | 1717 | 1717 4X2 | 1717E 4X2 | 1719 4X2 | 1721 | 1721 BR | 1721 CHILE | 1722 | 1722 4X2 | 1722E 4X2 | 1723 4X2 | 1730 ARG. | 1731 | 1932 4X2 | 1933 4X2 | 2322 | 2421 | 2422 | 2422 6X2 | 2422E 6X2 | 2423 6X2 | 2425 | 2428 6X2 | 2428E 6X2 | 2429 6X2 | 2622 | 2622 6X4 | 2622E 6X4 | 2623 6X4 | 2626 | 2628 6X4 | 2628E 6X4 | 2629 6X4 | 2630 | 2631 | 2632 6X4 | 2632E 6X4 | 2831 | 2932E 6X4 | 3132 6X4 | 3133 6X4 | 3222 | 3224 | 3530 | 4030 | 4031 | 4331 | 4432E 4X2 | 4532E/1832E | 5032E 6X4 | 6332E 6X4



**FORD: BF5X3111 10**

REP. MANGA CPL. P/1LD.=SIFCO=45,65X264,5 =0,10=

KING PIN KIT COMPLETE SIFCO 2 SIDES-STD 45,65X264,5

CIPEC: 021433

FORD: BF5X3111G 10

VW: TAR498629 10

FORD | 1215CUM | 1217 CUMMINS | 1316 CHILE | 1317 | 1317E 4X2 | 1415CUM | 1415FNH | 1417 CUMMINS | 1419 | 1421 | 1422 | 1517 4X2 | 1517E 4X2 | 1519 4X2 | 1521 | 1617 | 1621 BR | 1622 | 1630 | 1716 ARG. | 1717 | 1717 4X2 | 1717E 4X2 | 1719 4X2 | 1721 | 1721 BR | 1721 CHILE | 1722 | 1722 4X2 | 1722E 4X2 | 1723 4X2 | 1730 ARG. | 1731 | 1932 4X2 | 1933 4X2 | 2322 | 2421 | 2422 | 2422 6X2 | 2422E 6X2 | 2423 6X2 | 2425 | 2428 6X2 | 2428E 6X2 | 2429 6X2 | 2622 | 2622 6X4 | 2622E 6X4 | 2623 6X4 | 2626 | 2628 6X4 | 2628E 6X4 | 2629 6X4 | 2630 | 2631 | 2632 6X4 | 2632E 6X4 | 2831 | 2932E 6X4 | 3132 6X4 | 3133 6X4 | 3222 | 3224 | 3530 | 4030 | 4031 | 4331 | 4432E 4X2 | 4532E/1832E | 5032E 6X4 | 6332E 6X4



**FORD: BF5X3111 20**

REP. MANGA CPL. P/1LD.=SIFCO=45,75X264,5 =0,20=

KING PIN KIT COMPLETE SIFCO 2 SIDES-STD 45,75X264,5

CIPEC: 021435

FORD: BF5X3111G 20

VW: 2VF498629 20 / TAR498629 20

FORD | 1215CUM | 1217 CUMMINS | 1316 CHILE | 1317 | 1317E 4X2 | 1415CUM | 1415FNH | 1417 CUMMINS | 1419 | 1421 | 1422 | 1517 4X2 | 1517E 4X2 | 1519 4X2 | 1521 | 1617 | 1621 BR | 1622 | 1630 | 1716 ARG. | 1717 | 1717 4X2 | 1717E 4X2 | 1719 4X2 | 1721 | 1721 BR | 1721 CHILE | 1722 | 1722 4X2 | 1722E 4X2 | 1723 4X2 | 1730 ARG. | 1731 | 1932 4X2 | 1933 4X2 | 2322 | 2421 | 2422 | 2422 6X2 | 2422E 6X2 | 2423 6X2 | 2425 | 2428 6X2 | 2428E 6X2 | 2429 6X2 | 2622 | 2622 6X4 | 2622E 6X4 | 2623 6X4 | 2626 | 2628 6X4 | 2628E 6X4 | 2629 6X4 | 2630 | 2631 | 2632 6X4 | 2632E 6X4 | 2831 | 2932E 6X4 | 3132 6X4 | 3133 6X4 | 3222 | 3224 | 3530 | 4030 | 4031 | 4331 | 4432E 4X2 | 4532E/1832E | 5032E 6X4 | 6332E 6X4



**FORD: BF5X3111 30**

REP. MANGA CPL. P/1LD.=SIFCO=45,85X264,5 =0,30=

KING PIN KIT COMPLETE SIFCO 2 SIDES-STD 45,85X264,

CIPEC: 021428  
 FORD: BF5X3111G 30  
 VW: 2VF498629 30 / TAR498629 30

FORD | 1215CUM | 1217 CUMMINS | 1316 CHILE | 1317 | 1317E 4X2 | 1415CUM | 1415FNH | 1417 CUMMINS | 1419 | 1421 | 1422 | 1517 4X2 | 1517E 4X2 | 1519 4X2 | 1521 | 1617 | 1621 BR | 1622 | 1630 | 1716 ARG. | 1717 | 1717 4X2 | 1717E 4X2 | 1719 4X2 | 1721 | 1721 BR | 1721 CHILE | 1722 | 1722 4X2 | 1722E 4X2 | 1723 4X2 | 1730 ARG. | 1731 | 1932 4X2 | 1933 4X2 | 2322 | 2421 | 2422 | 2422 6X2 | 2422E 6X2 | 2423 6X2 | 2425 | 2428 6X2 | 2428E 6X2 | 2429 6X2 | 2622 | 2622 6X4 | 2622E 6X4 | 2623 6X4 | 2626 | 2628 6X4 | 2628E 6X4 | 2629 6X4 | 2630 | 2631 | 2632 6X4 | 2632E 6X4 | 2831 | 2932E 6X4 | 3132 6X4 | 3133 6X4 | 3222 | 3224 | 3530 | 4030 | 4031 | 4331 | 4432E 4X2 | 4532E/1832E | 5032E 6X4 | 6332E 6X4



**FORD: BF5X3111GCH 0**

REP. MANGA CPL. P/1LD.=SIFCO=45,55X264,5 =STD=

KING PIN KIT SIFCO 2 SIDES =STD= 45,55X264,5

CIPEC: 022213  
 FORD: BF5X3111CH 0 / BF5X3111LCH 0  
 VW: 2VF498629CH

FORD | 1215CUM | 1217 CUMMINS | 1316 CHILE | 1317 | 1317E 4X2 | 1517 4X2 | 1517E 4X2 | 1519 4X2 | 1617 | 1621 BR | 1622 | 1630 | 1716 ARG. | 1717 | 1717 4X2 | 1717E 4X2 | 1719 4X2 | 1721 BR | 1722 | 1722 4X2 | 1722E 4X2 | 1723 4X2 | 1730 ARG. | 1731 | 1932 4X2 | 1933 4X2 | 2421 | 2422 | 2422 6X2 | 2422E 6X2 | 2423 6X2 | 2425 | 2428 6X2 | 2428E 6X2 | 2429 6X2 | 2622 | 2622 6X4 | 2622E 6X4 | 2623 6X4 | 2626 | 2628 6X4 | 2628E 6X4 | 2629 6X4 | 2630 | 2631 | 2632 6X4 | 2632E 6X4 | 2932E 6X4 | 3132 6X4 | 3133 6X4 | 3224 | 3530 | 4030 | 4031 | 4331 | 4432E 4X2 | 4532E/1832E | 5032E 6X4 | 6332E 6X4



**FORD: BF5X3111GCH 10**

REP. MANGA CPL. P/1LD.=SIFCO=45,65X264,5 =0,10=

KING PIN KIT COMPLETE SIFCO 2 SIDES-STD 45,65X264

CIPEC: 022208  
 FORD: BF5X3111CH 10 / BF5X3111LCH 10  
 VW: 2VF498629CH 10

FORD | 1215CUM | 1217 CUMMINS | 1316 CHILE | 1317 | 1317E 4X2 | 1517 4X2 | 1517E 4X2 | 1519 4X2 | 1617 | 1621 BR | 1622 | 1630 | 1716 ARG. | 1717 | 1717 4X2 | 1717E 4X2 | 1719 4X2 | 1721 BR | 1722 | 1722 4X2 | 1722E 4X2 | 1723 4X2 | 1730 ARG. | 1731 | 1932 4X2 | 1933 4X2 | 2421 | 2422 | 2422 6X2 | 2422E 6X2 | 2423 6X2 | 2425 | 2428 6X2 | 2428E 6X2 | 2429 6X2 | 2622 | 2622 6X4 | 2622E 6X4 | 2623 6X4 | 2626 | 2628 6X4 | 2628E 6X4 | 2629 6X4 | 2630 | 2631 | 2632 6X4 | 2632E 6X4 | 2932E 6X4 | 3132 6X4 | 3133 6X4 | 3224 | 3530 | 4030 | 4031 | 4331 | 4432E 4X2 | 4532E/1832E | 5032E 6X4 | 6332E 6X4



**FORD: BF5X3111GCH 20**

REP. MANGA CPL. P/1LD.=SIFCO=45,75X264,5 =0,20=

KING PIN KIT COMPLETE SIFCO 2 SIDES-STD 45,75X264,

CIPEC: 022211  
 FORD: BF5X3111CH 20 / BF5X3111LCH 20  
 VW: 2VF498629CH 20

FORD | 1215CUM | 1217 CUMMINS | 1316 CHILE | 1317 | 1317E 4X2 | 1517 4X2 | 1517E 4X2 | 1519 4X2 | 1617 | 1621 BR | 1622 | 1630 | 1716 ARG. | 1717 | 1717 4X2 | 1717E 4X2 | 1719 4X2 | 1721 BR | 1722 | 1722 4X2 | 1722E 4X2 | 1723 4X2 | 1730 ARG. | 1731 | 1932 4X2 | 1933 4X2 | 2421 | 2422 | 2422 6X2 | 2422E 6X2 | 2423 6X2 | 2425 | 2428 6X2 | 2428E 6X2 | 2429 6X2 | 2622 | 2622 6X4 | 2622E 6X4 | 2623 6X4 | 2626 | 2628 6X4 | 2628E 6X4 | 2629 6X4 | 2630 | 2631 | 2632 6X4 | 2632E 6X4 | 2932E 6X4 | 3132 6X4 | 3133 6X4 | 3224 | 3530 | 4030 | 4031 | 4331 | 4432E 4X2 | 4532E/1832E | 5032E 6X4 | 6332E 6X4





FORD: BF5X3111GCH 30

REP. MANGA CPL. P/1LD.=SIFCO=45,85X264,5 =0,30=

KING PIN KIT COMPLETE SIFCO 2 SIDES-STD 45,85X264,

CIPEC: 021954

FORD: BF5X3111CH 30 / BF5X3111LCH 30

VW: 2VF498629CH 30

FORD | 1215CUM | 1217 CUMMINS | 1316 CHILE | 1317 | 1317E 4X2 | 1517 4X2 | 1517E 4X2 | 1519 4X2 | 1617 | 1621 BR | 1622 | 1630 | 1716 ARG. | 1717 | 1717 4X2 | 1717E 4X2 | 1719 4X2 | 1721 BR | 1722 | 1722 4X2 | 1722E 4X2 | 1723 4X2 | 1730 ARG. | 1731 | 1932 4X2 | 1933 4X2 | 2421 | 2422 | 2422 6X2 | 2422E 6X2 | 2423 6X2 | 2425 | 2428 6X2 | 2428E 6X2 | 2429 6X2 | 2622 | 2622 6X4 | 2622E 6X4 | 2623 6X4 | 2626 | 2628 6X4 | 2628E 6X4 | 2629 6X4 | 2630 | 2631 | 2632 6X4 | 2632E 6X4 | 2932E 6X4 | 3132 6X4 | 3133 6X4 | 3224 | 3530 | 4030 | 4031 | 4331 | 4432E 4X2 | 4532E/1832E | 5032E 6X4 | 6332E 6X4



**IVECO: 1904698**

REP. MANGA EIXO C/ROLAM+RETEN.STRALIS/TRAKKER/

KING PIN KIT W/ BEARING STRALIS/TRAKKER/TECH

CIPEC: 017275

IVECO | EUROCARGO | EUROTECH | EUROTRAKKER | NOVO STRALIS | NOVO TRAKKER | STRALIS | TRAKKER



**IVECO: 1904698 P**

REP. MANGA EIXO S/BASE DO PINO STRALIS/TRAKKER/TEC

KING PIN KIT - STRALIS/TRAKKER/TECH

CIPEC: 017276

IVECO | EUROCARGO | EUROTECH | EUROTRAKKER | NOVO STRALIS | NOVO TRAKKER | STRALIS | TRAKKER



**IVECO: 500053383**

REP. MANGA CPL. P/1LD.=MERITOR= 40,80MM =STD=

AXLE REPAIR KIT COMPLETE FOR 1 SIDE =STD=40,80MM

CIPEC: 022002

VW: 805687

IVECO | 130V18 VERTIS CAMINHAO 4X2 | 130V19 VERTIS CAMINHAO ECOLINE 4X2



**IVECO: 500053383 10**

REP. MANGA CPL. P/1LD.=MERITOR= 40,90MM =0,10=

AXLE REPAIR KIT COMPLETE FOR 1 SIDE 40,90MM =0,10=

CIPEC: 022036

IVECO | 130V18 VERTIS CAMINHAO 4X2 | 130V19 VERTIS CAMINHAO ECOLINE 4X2



**IVECO: 500053383 20**

REP. MANGA CPL. P/1LD.=MERITOR= 41,00MM =0,20=

AXLE REPAIR KIT COMPLETE FOR 1 SIDE 41,00MM =0,20=

CIPEC: 021971

IVECO | 130V18 VERTIS CAMINHAO 4X2 | 130V19 VERTIS CAMINHAO ECOLINE 4X2



**IVECO: 500053383 30**

REP. MANGA CPL. P/1LD.=MERITOR= 41,10MM =0,30=

AXLE REPAIR KIT COMPLETE FOR 1 SIDE 41,10MM =0,30=

CIPEC: 022169

IVECO | 130V18 VERTIS CAMINHAO 4X2 | 130V19 VERTIS CAMINHAO ECOLINE 4X2



**IVECO: 500053383CH**

REP. MANGA CPL. P/1LD.=MERITOR= 40,80X233MM =STD=

KING PIN KIT =MERITOR= 40,80X233MM =STD=

CIPEC: 023758

IVECO | VERTIS 130V18 CAMINHAO | VERTIS 130V19 CAMINHAO



**IVECO: 500053383CH 10**

REP. MANGA CPL. P/1LD.=MERITOR= 40,90X233MM =0,10=

AXLE REPAIR KIT COMPLETE FOR 1 SIDE =STD=40,80MM

CIPEC: 024242

IVECO | VERTIS 130V18 CAMINHAO | VERTIS 130V19 CAMINHAO



**IVECO: 500053383CH 20**

REP. MANGA CPL. P/1LD.=MERITOR= 41,00X233MM =0,20=

AXLE REPAIR KIT COMPLETE FOR 1 SIDE =STD=40,80MM

CIPEC: 024243  
 FORD: BF5X3111BCH 20  
 IVECO | VERTIS 130V18 CAMINHAO | VERTIS 130V19 CAMINHAO



**IVECO: 500053383CH 30**

REP. MANGA CPL. P/1LD.=MERITOR= 41,10X233MM =0,30=

AXLE REPAIR KIT COMPLETE FOR 1 SIDE =STD=40,80MM

CIPEC: 024244  
 IVECO | VERTIS 130V18 CAMINHAO | VERTIS 130V19 CAMINHAO



**IVECO: 500053591**

REP. MANGA CPL. VERTIS 90V16-90V18 (33,00) =STD=

KING PIN KIT VERTIS 90V16-90V18 (33,00) =STD=

CIPEC: 019699  
 IVECO | 90V16 VERTIS CAMINHAO 4X2 | 90V18 VERTIS CAMINHAO 4X2



**IVECO: 500053591 20**

REP. MANGA CPL. VERTIS 90V16-90V18 (33,20) =0,20=

KING PIN KIT VERTIS 90V16-90V18 (33,20) =0,20=

CIPEC: 019701  
 IVECO | 90V16 VERTIS CAMINHAO 4X2 | 90V18 VERTIS CAMINHAO 4X2



IVECO: 500053591 30

REP. MANGA CPL. VERTIS 90V16-90V18 (33,30) =0,30=

KING PIN KIT VERTIS 90V16-90V18 (33,30) =0,30=

CIPEC: 019702

IVECO | 90V16 VERTIS CAMINHAO 4X2 | 90V18 VERTIS CAMINHAO 4X2



IVECO: 500053591 40

REP. MANGA CPL. VERTIS 90V16-90V18 (33,40) =0,40=

KING PIN KIT VERTIS 90V16-90V18 (33,40) =0,40=

CIPEC: 019703

IVECO | 90V16 VERTIS CAMINHAO 4X2 | 90V18 VERTIS CAMINHAO 4X2



IVECO: 500053591CH 0

REP. MANGA CPL. P/1LD.=SIFCO= 33,00 =STD= C/CHIME

KING PIN KIT =SIFCO= 33,00X169,3 =STD=

CIPEC: 022722

IVECO | 90V16 VERTIS CAMINHAO 4X2 | 90V18 VERTIS CAMINHAO 4X2



IVECO: 500053591CH 10

REP. MANGA CPL. P/1LD.=SIFCO= 33,10 =0,10= C/CHIME

KING PIN KIT =SIFCO= 33,10X169,3 =0,10=

CIPEC: 022720

IVECO | 90V16 VERTIS CAMINHAO 4X2 | 90V18 VERTIS CAMINHAO 4X2





IVECO: 500053591CH 20

REP. MANGA CPL. P/1LD.=SIFCO= 33,20 =0,20= C/CHIME

KING PIN KIT =SIFCO= 33,20X169,3 =0,20=

CIPEC: 022723

IVECO | 90V16 VERTIS CAMINHAO 4X2 | 90V18 VERTIS CAMINHAO 4X2



IVECO: 500053591CH 30

REP. MANGA CPL. P/1LD.=SIFCO= 33,30 =0,30= C/CHIME

KING PIN KIT =SIFCO= 33,30X169,3 =0,30=

CIPEC: 022721

IVECO | 90V16 VERTIS CAMINHAO 4X2 | 90V18 VERTIS CAMINHAO 4X2



IVECO: 500053591CH 40

REP. MANGA CPL. P/1LD.=SIFCO= 33,40 =0,40= C/CHIME

KING PIN KIT =SIFCO= 33,30X169,3 =0,40=

CIPEC: 022719

IVECO | 90V16 VERTIS CAMINHAO 4X2 | 90V18 VERTIS CAMINHAO 4X2



**MERCEDES: 3503300019**

REP. MANGA MBB 51MM (STD)

CIPEC: 025714

MERCEDES | 1924 | 1929 | 1930 | 1932 | 1933 | 1935 | 1941



**MERCEDES: 3503300019 10**

REP. MANGA MBB 51MM (0,10)

CIPEC: 025715

MERCEDES | 1924 | 1929 | 1930 | 1932 | 1933 | 1935 | 1941



**MERCEDES: 3503300019 20**

REP. MANGA MBB 51MM (0,20)

CIPEC: 025716

MERCEDES | 1924 | 1929 | 1930 | 1932 | 1933 | 1935 | 1941



**MERCEDES: 3503300019 30**

REP. MANGA MBB 51MM (0,30)

CIPEC: 025717

MERCEDES | 1924 | 1929 | 1930 | 1932 | 1933 | 1935 | 1941



**MERCEDES: 3643300019**

REP. MANGA MBB 50MM (STD)

KING PIN SET REP. KIT 50MM STD ONE SITE O 371/371R

CIPEC: 025731

MERCEDES | O370 | O371 | O371 R | O371 RS | O400



**MERCEDES: 3643300019 10**

REP. MANGA MBB 50MM (0,10)

CIPEC: 025732

MERCEDES | O370 | O371 | O371 R | O371 RS | O400



**MERCEDES: 3643300019 20**

REP. MANGA MBB 50MM (0,20)

CIPEC: 025733

MERCEDES | O370 | O371 | O371 R | O371 RS | O400



**MERCEDES: 3643300019 30**

REP. MANGA MBB 50MM (0,30)

CIPEC: 025734

MERCEDES | O370 | O371 | O371 R | O371 RS | O400



**MERCEDES: 3763300319**

REP. MANGA MBB 38MM (STD)

KING PIN SET R.KIT ONE SIDE 38MM STD 1113 TO 2213

CIPEC: 025471

MERCEDES | FREIO A AR DO 1113 AO 2213



**MERCEDES: 3763300319 10**

REP. MANGA MBB 38MM (0,10)

KING PIN SET COMPLETE MB 38MM 0,10

CIPEC: 025472

MERCEDES | FREIO A AR DO 1113 AO 2213



**MERCEDES: 3763300319 20**

REP. MANGA MBB 38MM (0,20)

KING PIN SET COMPLETE 38MM 0,20

CIPEC: 025473

MERCEDES | FREIO A AR DO 1113 AO 2213



**MERCEDES: 3763300319 30**

REP. MANGA MBB 38MM (0,30)

KING PIN REP. KIT COMOLETE MB 38MM 0,30

CIPEC: 025474

MERCEDES | FREIO A AR DO 1113 AO 2213



**MERCEDES: 6753300019**

REP. MANGA MBB 30MM (STD)

KING PIN SET REP. KIT. 30MM STD ONE SITE 812/912/4

CIPEC: 025710

MERCEDES | 812 | 912 | 914



**MERCEDES: 6753300019 10**

REP. MANGA MBB 30MM (0,10)

KING PIN REP. KIT COMPLETE MB 30MM 0,10

CIPEC: 025711

MERCEDES



**MERCEDES: 6753300019 20**

REP. MANGA MBB 30MM (0,20)

KING PIN REP. KIT COMPLETE MB 30MM 0,20

CIPEC: 025712

MERCEDES



**MERCEDES: 6753300019 30**

REP. MANGA MBB 30MM (0,30)

KING PIN SET COMPLETE MB 30MM 0,30

CIPEC: 025713

MERCEDES





**MERCEDES: 6963300019**

REP. MANGA MBB 45 MM (STD)

KING PIN SET MB 45MM STD

CIPEC: 025878  
MERCEDES: 3553300319  
MERCEDES | OF1722



**MERCEDES: 6963300019 10**

REP. MANGA MBB 45 MM (0,10)

KING PIN SET MB 45,1 MM

CIPEC: 025879  
MERCEDES: 3553300319 10  
MERCEDES | OF1722



**MERCEDES: 6963300019 30**

REP. MANGA MBB 45 MM (0,30)

KING PIN SET MB 45,3MM

CIPEC: 025881  
MERCEDES: 3553300319 30  
MERCEDES | OF1722



SCANIA: 1405343

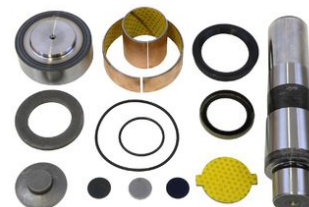
REP. MANGA C/BUCHAS S/ROL.=ORIG=

KING PIN KIT 114/124 W/BUSHING W/O BEARING OEM

CIPEC: 005858

SCANIA: 1912140

SCANIA | 114 | 124 | 164 | 94 | F94 | K114 | K124 | K94 | P.G.R.



SCANIA: 550257

REP. MANGA 114/24 =C/ROLAMENTO=

KING PIN KIT 114/124 W/ BEARING

CIPEC: 003836

SCANIA | 114 | 124 | 164 | 94 | F94 | K114 | K124 | K94 | P.G.R.



SCANIA: 550284

REP. MANGA 114/24 =ORIG= S/ROL.

KING PIN KIT 114/124 W/O BEARING

CIPEC: 003879

SCANIA | 114 | 124 | 164 | 94 | F94 | K114 | K124 | K94 | P.G.R.



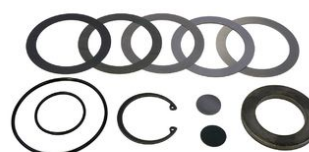
SCANIA: 550284 A

REP. MANGA 114/24 =ORIG= S/ROL./RET./BUCHA/PINO

KING PIN KIT 114/124 W/O BEARING/BUSHING/PIN/RET

CIPEC: 013450

SCANIA | 114 | 124 | 164 | 94 | F94 | K114 | K124 | K94 | P.G.R.



**SCANIA: 550284 P**

REP. MANGA 114/24 =ORIG= S/ROL./BUCHA/PINO

KING PIN KIT 114/124 W/O BEARING/BUSHING/PIN

CIPEC: 013451

SCANIA | 114 | 124 | 164 | 94 | F94 | K114 | K124 | K94 | P.G.R.



**SCANIA: 550711**

REP. MANGA AM 55 C/BUCHAS =M.LEVE=

KING PIN KIT W/ BUSHINGS

CIPEC: 001962

SCANIA | 110 | 111 | F112 | K112 | L75 | L76 | LK140 | LK141 | P93 | R112 | R113 | R142 | R143 | T112 | T113



**SCANIA: 550711 O**

REP. MANGA AM 55 C/BUCHAS =ORIGINAL=

KING PIN KIT W/ BUSHINGS

CIPEC: 002847

SCANIA: 550733 O

SCANIA | 110 | 111 | F112 | K112 | L75 | L76 | LK140 | LK141 | P93 | R112 | R113 | R142 | R143 | T112 | T113



**SCANIA: 550712**

REP. MANGA AM 55 =SEM BUCHAS=

KING PIN KIT AM 55 W/O BUSHINGS

CIPEC: 002810

SCANIA | 110 | 111 | F112 | K112 | L75 | L76 | LK140 | LK141 | P93 | R112 | R113 | R142 | R143 | T112 | T113



**SCANIA: 550713**

REP. MANGA AM 55 =SEM BUCHAS= =SEM PINO=

KING PIN KIT AM 55 W/O BUSHING - W/O PIN

CIPEC: 006884

SCANIA | 110 | 111 | F112 | K112 | L75 | L76 | LK140 | LK141 | P93 | R112 | R113 | R142 | R143 | T112 | T113



**SCANIA: 550714 A**

REP. MANGA AM 60 C/BUCHAS =BRONZE=

KING PIN KIT AM 60 W/ BUSHINGS

CIPEC: 001967

SCANIA: 550732 A

SCANIA | F112 | F113 | K112 | K113 | L113 | R112 | R113 | R142 | R143 | T112 | T113 | T142



**SCANIA: 550714 O**

REP. MANGA AM 60 C/BUCHAS =ORIGINAL=

KING PIN KIT AM 60 W/ GENUINE BUSHINGS

CIPEC: 002848

SCANIA: 550732 O

SCANIA | F112 | F113 | K112 | K113 | L113 | R112 | R113 | R142 | R143 | T112 | T113 | T142



**SCANIA: 550716**

REP. MANGA AM 60 =SEM BUCHAS= =SEM PINO=

KING PIN KIT AM 60 W/O BUSHINGS - W/O PIN

CIPEC: 006885

SCANIA | F112 | F113 | K112 | K113 | L113 | R112 | R113 | R142 | R143 | T112 | T113 | T142



**VOLVO: 3090266 V**

REP. MANGA EIXO B12/FH12 (IMP.ANO 94 A 98)

KING PIN KIT - B12/FH12 (94 TO 98)

CIPEC: 006203  
VOLVO | FH12



**VOLVO: 6889606 V**

REP. MANGA EIXO =SEM BUCHA ESPACADORA=

KING PIN KIT W/O BUSHING

CIPEC: 008950  
VOLVO: 3090267 V  
VOLVO | B10M | B10R | B12 | B58 | B7R | N10 | N12 | NL10 | NL12



**VOLVO: 6889606 VO**

REP. MANGA EIXO - B10M/B58 N10/12

KING PIN KIT W/ BUSHING - B10M/B58 N10/12

CIPEC: 003230  
VOLVO: 3090267 VO  
VOLVO | B58 | N10 | N12 | NL10 | NL12



**VOLVO: 6889629 V**

REP. MANGA EIXO - S/BUCHA ESPACADORA

KING PIN KIT W/O BUSHING

CIPEC: 008949  
VOLVO | N10 | N12 | NL10 | NL12



**VOLVO: 6889629 VA**

REP. MANGA EIXO - C/BUCHA ACETILICA

KING PIN KIT W/ BUSHING

CIPEC: 011480  
VOLVO | N10 | N12 | NL10 | NL12



**VOLVO: 6889629 VO**

REP. MANGA EIXO - C/BUCHA ESP. NL10/NL12

KING PIN KIT W/ BUSHING - NL10/NL12

CIPEC: 003229  
VOLVO | N10 | N12 | NL10 | NL12



**VOLVO: 8127759 V**

REP. MANGA EIXO FH/NH/FM (ANO 99 A 2004)

KING PIN KIT - FH/NH/FM (1999 TO 2004)

CIPEC: 007954  
VOLVO



**VOLVO: 85108338 V**

REP. MANGA EIXO FH/NH/FM =PARTIR 04=

KING PIN KIT - FH/NH/FM -UP 2004-

CIPEC: 009745  
VOLVO: 3093731 V  
VOLVO | B12B | FH | FH12 | FH16 | FL6 | FM | FM10 | FM12 | FM7 | FM9 | NH12 | VM





**VOLVO: 85109218 V**

REP. MANGA EIXO VM C/ROL. AGULHA

KING PIN KIT - VM

CIPEC: 012872  
VOLVO | VM



**VOLVO: 85109218 VA**

REP. MANGA EIXO VM C/ROL.=COMPLETO=

KING PIN KIT - VM W/ BEARING

CIPEC: 016464  
VOLVO | VM



VW: 2P0498629

REP. MANGA CPL. P/1LD =SIFCO= 33,00X157,7 =STD=

KING PIN SET =SIFCO= 33,00X157,7 =STD=

CIPEC: 018957

VW | 5.140 EOD | 5.140 MWM DELIVERY | 8.150EOD | 8.150MWM DELIVERY



VW: 2P0498629 10

REP. MANGA CPL. P/1LD =SIFCO= 33,10X157,7 =0,10=

KING PIN SET =SIFCO= 33,10X157,7 =0,10=

CIPEC: 018958

VW | 5.140 EOD | 5.140 MWM DELIVERY | 8.150EOD | 8.150MWM DELIVERY



VW: 2P0498629 20

REP. MANGA CPL. P/1LD =SIFCO= 33,20X157,7 =0,20=

KING PIN SET =SIFCO= 33,20X157,7 =0,20=

CIPEC: 018959

VW | 5.140 EOD | 5.140 MWM DELIVERY | 8.150 EOD | 8.150 MWM DELIVERY



VW: 2P0498629 30

REP. MANGA CPL. P/1LD =SIFCO= 33,30X157,7 =0,30=

KING PIN SET =SIFCO= 33,30X157,7 =0,30=

CIPEC: 018960

VW | 5.140 EOD | 5.140 MWM DELIVERY | 8.150 EOD | 8.150 MWM DELIVERY



VW: 2P0498629 40

REP. MANGA CPL. P/1LD =SIFCO= 33,40X157,7 =0,40=

KING PIN SET =SIFCO= 33,40X157,7 =0,40=

CIPEC: 018961

VW | 5.140 EOD | 5.140 MWM DELIVERY | 8.150 EOD | 8.150 MWM DELIVERY



VW: 2P0498629CH

REP. MANGA CPL. P/1LD.=SIFCO= 33,00X157,7 =STD=

KING PIN SET =SIFCO= 33,00X157,7 =STD=

CIPEC: 019820

VW | 5.140 EOD | 5.140 MWM DELIVERY | 8.150 EOD | 8.150 MWM DELIVERY



VW: 2P0498629CH 10

REP. MANGA CPL. P/1LD.=SIFCO= 33,10X157,7 =0,10=

KING PIN SET =SIFCO= 33,10X157,7 =0,10=

CIPEC: 019821

VW | 5.140 EOD | 5.140 MWM DELIVERY | 8.150 EOD | 8.150 MWM DELIVERY



VW: 2P0498629CH 20

REP. MANGA CPL. P/1LD.=SIFCO= 33,20X157,7 =0,20=

KING PIN SET =SIFCO= 33,20X157,7 =0,20=

CIPEC: 019822

VW | 5.140 EOD | 5.140 MWM DELIVERY | 8.150 EOD | 8.150 MWM DELIVERY



VW: 2P0498629CH 30

REP. MANGA CPL. P/1LD.=SIFCO= 33,30X157,7 =0,30=

KING PIN SET =SIFCO= 33,30X157,7 =0,30=

CIPEC: 019823

VW | 5.140 EOD | 5.140 MWM DELIVERY | 8.150EOD | 8.150MWM DELIVERY



VW: 2P0498629CH 40

REP. MANGA CPL. P/1LD.=SIFCO= 33,40X157,7 =0,40=

KING PIN SET =SIFCO= 33,40X157,7 =0,40=

CIPEC: 019824

VW | 5.140 EOD | 5.140 MWM DELIVERY | 8.150EOD | 8.150MWM DELIVERY



VW: 2R0498629A

REP. MANGA CPL. P/1LD.=SIFCO= 33,00X169,3 =STD=

KING PIN KIT =SIFCO= 33,00X169,3 =STD=

CIPEC: 010318

VW: 2RF498629

VW | 7.120 | 8.100 | 8.120 | 8.120OD | 8.150 | 8.150 EOD | 8.150 MWM DELIVERY | 8.150 OD | 8.150E | 8.150E PLUS | 8.150OD | 9.150E | 9.150E CUMMINS DELIVERY | 9.150EOD | 9.150OD



VW: 2R0498629A 10

REP. MANGA CPL. P/1LD.=SIFCO= 33,10X169,3 =0,10=

KING PIN KIT =SIFCO= 33,10X169,3 =0,10=

CIPEC: 017692

VW: 2RF498629 10

VW | 7.120 | 8.100 | 8.120 | 8.120OD | 8.150 | 8.150 EOD | 8.150 MWM DELIVERY | 8.150 OD | 8.150E | 8.150E PLUS | 8.150OD | 9.150E | 9.150E CUMMINS DELIVERY | 9.150EOD | 9.150OD



VW: 2R0498629A 20

REP. MANGA CPL. P/1LD.=SIFCO= 33,20X169,3 =0,20=

KING PIN KIT =SIFCO= 33,20X169,3 =0,20=

CIPEC: 017693

VW: 2RF498629 20

VW | 7.120 | 8.100 | 8.120 | 8.120OD | 8.150 | 8.150 EOD | 8.150 MWM DELIVERY | 8.150 OD | 8.150E | 8.150E PLUS | 8.150OD | 9.150E | 9.150E CUMMINS DELIVERY | 9.150EOD | 9.150OD



VW: 2R0498629A 30

REP. MANGA CPL. P/1LD.=SIFCO= 33,30X169,3 =0,30=

KING PIN KIT =SIFCO= 33,30X169,3 =0,30=

CIPEC: 017694

VW: 2RF498629 30

VW | 7.120 | 8.100 | 8.120 | 8.120OD | 8.150 | 8.150 EOD | 8.150 MWM DELIVERY | 8.150 OD | 8.150E | 8.150E PLUS | 8.150OD | 9.150E | 9.150E CUMMINS DELIVERY | 9.150EOD | 9.150OD



VW: 2R0498629A 40

REP. MANGA CPL. P/1LD.=SIFCO= 33,40X169,3 =0,40=

KING PIN KIT =SIFCO= 33,40X169,3 =0,40=

CIPEC: 018933

VW: 2RF498629 40

VW | 7.120 | 8.100 | 8.120 | 8.120OD | 8.150 | 8.150 EOD | 8.150 MWM DELIVERY | 8.150 OD | 8.150E | 8.150E PLUS | 8.150OD | 9.150E | 9.150E CUMMINS DELIVERY | 9.150EOD | 9.150OD



VW: 2R0498629ACH 0

REP. MANGA CPL. P/1LD.=SIFCO= 33,00 =STD= C/CHIME

KING PIN KIT =SIFCO= 33,00X169,3 =STD=

CIPEC: 019870

VW | 7.120 | 8.100 | 8.120 | 8.120OD | 8.150 | 8.150 EOD | 8.150 MWM DELIVERY | 8.150 OD | 8.150E | 8.150E PLUS | 8.150OD | 9.150E | 9.150E CUMMINS DELIVERY | 9.150EOD | 9.150OD



VW: 2R0498629ACH 10

REP. MANGA CPL. P/1LD.=SIFCO= 33,10 =0,10= C/CHIME

KING PIN KIT =SIFCO= 33,10X169,3 =0,10=

CIPEC: 019871

VW | 7.120 | 8.100 | 8.120 | 8.120OD | 8.150 | 8.150 EOD | 8.150 MWM DELIVERY | 8.150 OD | 8.150E | 8.150E PLUS | 8.150OD | 9.150E | 9.150E CUMMINS DELIVERY | 9.150EOD | 9.150OD



VW: 2R0498629ACH 20

REP. MANGA CPL. P/1LD.=SIFCO= 33,20 =0,20= C/CHIME

KING PIN KIT =SIFCO= 33,20X169,3 =0,20=

CIPEC: 019872

VW | 7.120 | 8.100 | 8.120 | 8.120OD | 8.150 | 8.150 EOD | 8.150 MWM DELIVERY | 8.150 OD | 8.150E | 8.150E PLUS | 8.150OD | 9.150E | 9.150E CUMMINS DELIVERY | 9.150EOD | 9.150OD



VW: 2R0498629ACH 30

REP. MANGA CPL. P/1LD.=SIFCO= 33,30 =0,30= C/CHIME

KING PIN KIT =SIFCO= 33,30X169,3 =0,30=

CIPEC: 019873

VW | 7.120 | 8.100 | 8.120 | 8.120OD | 8.150 | 8.150 EOD | 8.150 MWM DELIVERY | 8.150 OD | 8.150E | 8.150E PLUS | 8.150OD | 9.150E | 9.150E CUMMINS DELIVERY | 9.150EOD | 9.150OD



VW: 2R0498629ACH 40

REP. MANGA CPL. P/1LD.=SIFCO= 33,40 =0,40= C/CHIME

KING PIN KIT =SIFCO= 33,30X169,3 =0,40=

CIPEC: 019874

VW | 7.120 | 8.100 | 8.120 | 8.120OD | 8.150 | 8.150 EOD | 8.150 MWM DELIVERY | 8.150 OD | 8.150E | 8.150E PLUS | 8.150OD | 9.150E | 9.150E CUMMINS DELIVERY | 9.150EOD | 9.150OD





VW: 2R0498629G 0

REP. MANGA CPL. P/1LD.=SIFCO= 33,00X169,3 =STD=

KING PIN KIT =SIFCO= 33,00X169,3 =STD=

CIPEC: 024044

FORD | 1119 FORD CARGO | VW | 5.150 OD EURO V | 8.150 EOD | 8.160 OD EURO V | 9.150EOD | 9.160 OD | 9.160 OD EURO V



VW: 2R0498629G 10

REP. MANGA CPL. P/1LD.=SIFCO= 33,10X169,3 =0,10=

KING PIN KIT =SIFCO= 33,10X169,3 =0,10=

CIPEC: 024045

FORD | 1119 FORD CARGO | VW | 8.150 EOD | 9.150EOD | 9.160 OD

imagem indisponível

VW: 2R0498629G 20

REP. MANGA CPL. P/1LD.=SIFCO= 33,20X169,3 =0,20=

KING PIN KIT =SIFCO= 33,20X169,3 =0,20=

CIPEC: 024046

FORD | 1119 FORD CARGO | VW | 8.150 EOD | 9.150EOD | 9.160 OD



VW: 2R0498629G 30

REP. MANGA CPL. P/1LD.=SIFCO= 33,30X169,3 =0,30=

KING PIN KIT =SIFCO= 33,30X169,3 =0,30=

CIPEC: 024047

FORD | 1119 FORD CARGO | VW | 8.150 EOD | 9.150EOD | 9.160 OD



VW: 2R0498629G 40

REP. MANGA CPL. P/1LD.=SIFCO= 33,40X169,3 =0,40=

KING PIN KIT =SIFCO= 33,40X169,3 =0,40=

CIPEC: 024048

FORD | 1119 FORD CARGO | VW | 8.150 EOD | 9.150EOD | 9.160 OD



VW: 2R0498629GCH 0

REP. MANGA CPL. P/1LD.=SIFCO= 33,00X169,3 =STD=

KING PIN KIT =SIFCO= 33,00X169,3 =STD=

CIPEC: 024141

FORD | 1119 FORD CARGO | VW | 8.150 EOD | 9.150EOD | 9.160 OD



VW: 2R0498629GCH 10

REP. MANGA CPL. P/1LD.=SIFCO= 33,10X169,3 =0,10=

KING PIN KIT =SIFCO= 33,10X169,3 =0,10=

CIPEC: 024142

FORD | 1119 FORD CARGO | VW | 8.150 EOD | 9.150EOD | 9.160 OD



VW: 2R0498629GCH 20

REP. MANGA CPL. P/1LD.=SIFCO= 33,20X169,3 =0,20=

KING PIN KIT =SIFCO= 33,20X169,3 =0,20=

CIPEC: 024143

FORD | 1119 FORD CARGO | VW | 8.150 EOD | 9.150EOD | 9.160 OD



VW: 2R0498629GCH 30

REP. MANGA CPL. P/1LD.=SIFCO= 33,30X169,3 =0,30=

KING PIN KIT =SIFCO= 33,30X169,3 =0,30=

CIPEC: 024144

FORD | 1119 FORD CARGO | VW | 8.150 EOD | 9.150EOD | 9.160 OD



VW: 2R0498629GCH 40

REP. MANGA CPL. P/1LD.=SIFCO= 33,40X169,3 =0,40=

KING PIN KIT =SIFCO= 33,40X169,3 =0,40=

CIPEC: 024145

FORD | 1119 FORD CARGO | VW | 8.150 EOD | 9.150EOD | 9.160 OD

imagem indisponível

VW: 2R4498629

REP. MANGA CPL. P/1LD.=MERITOR= 31,75MM =STD=

KING PIN KIT =MERITOR= 31,75MM =STD=

CIPEC: 024383

VW | 8.150 EOD EIXO BITOLA MODIFICADA | 9.150 EOD EIXO BITOLA MODIFICADA | 9.150 WORKER



VW: 2R4498629CH

REP. MANGA CPL. P/1LD.=MERITOR= 31,75MM =STD=

KING PIN KIT =MERITOR= 31,75MM =STD=

CIPEC: 024387

VW | 8.150 EOD EIXO BITOLA MODIFICADA | 9.150 EOD EIXO BITOLA MODIFICADA



**VW: 2TD498629**

REP. MANGA CPL. P/1LD.=MERITOR= 40,80X225,0MM =STD

KING PIN SET 40,80X225,0MM =STD= MERITOR

CIPEC: 010319

VW: 805795

VW | 13.150 | 13.170 | 13.170E | 13.180 | 13.190 | 15.170E



**VW: 2TD498629 10**

REP. MANGA CPL.P/1LD.=MERITOR=40,90X225,00MM=0,10=

KING PIN SET 40,90X225,00MM =0,10= MERITOR

CIPEC: 019369

VW: 805795 10

VW | 13.150 | 13.170 | 13.170E | 13.180 | 13.190 | 15.170E



**VW: 2TD498629 20**

REP. MANGA CPL.P/1LD.=MERITOR=41,00X225,00MM=0,20=

KING PIN SET 41,00X225,00MM =0,20= MERITOR

CIPEC: 019370

VW: 807795 20

VW | 13.150 | 13.170 | 13.170E | 13.180 | 13.190 | 15.170E



**VW: 2TD498629 30**

REP. MANGA CPL.P/1LD.=MERITOR=41,10X225,00MM=0,30=

KING PIN SET 41,10X225,00MM =0,30= MERITOR

CIPEC: 019371

VW: 805795 30

VW | 13.150 | 13.170 | 13.170E | 13.180 | 13.190 | 15.170E



VW: 2TD498629CH 0

REP. MANGA CPL. P/1LD.=MERITOR= 40,80X225MM=STD=

KING PIN SET 40,80X225MM =STD= MERITOR

CIPEC: 019858

VW | 13.150 | 13.170 | 13.170E | 13.180 | 13.190 | 15.170E



VW: 2TD498629CH 10

REP. MANGA CPL. P/1LD.=MERITOR= 40,90X225MM =0,10=

KING PIN SET 40,90X225MM =0,10= MERITOR

CIPEC: 019859

VW | 13.150 | 13.170 | 13.170E | 13.180 | 13.190 | 15.170E



VW: 2TD498629CH 20

REP. MANGA CPL. P/1LD.=MERITOR= 41,00X225MM=0,20=

KING PIN SET 41,00X225MM =0,20= MERITOR

CIPEC: 019860

VW | 13.150 | 13.170 | 13.170E | 13.180 | 13.190 | 15.170E



VW: 2TD498629CH 30

REP. MANGA CPL. P/1LD.=MERITOR= 41,10X225MM=0,30=

KING PIN SET 41,10X225MM =0,30= MERITOR

CIPEC: 019861

VW | 13.150 | 13.170 | 13.170E | 13.180 | 13.190 | 15.170E



VW: 2VC498629

REP. MANGA CPL. P/1LD.=MERITOR= 31,35MM =STD=

KING PIN KIT =MERITOR= 31,35MM =STD=

CIPEC: 010317

VW: 2R0498629 / 805709

AGRALE | VOLARE AFRICA SUL W8-RHD | VOLARE W8 | VOLARE W8 SEGUNDA EDICAO | VW | 5.140 EOD | 5.140 MWM DELIVERY | 7.100 | 7.120 | 8.100 | 8.120 | 8.120OD | 8.140 | 8.140CE | 8.140CKD | 8.140CO | 8.150 | 8.150 EOD | 8.150 MWM DELIVERY | 8.150 OD | 8.150E | 8.150OD | 9.150E | 9.150EOD | 9.150OD



VW: 2VC498629 10

REP. MANGA CPL. P/1LD.=MERITOR= 31,45MM =0,10=

KING PIN KIT =MERITOR= 31,45MM =0,10=

CIPEC: 017695

FORD: BD2T3111 10

VW: 2R0498629 10

AGRALE | VOLARE AFRICA SUL W8-RHD | FORD | 814 | 815 | VW | 5.140 EOD | 5.140 MWM DELIVERY | 7.100 | 7.120 | 8.100 | 8.120 | 8.120OD | 8.140 | 8.140CE | 8.140CKD | 8.140CO | 8.150 | 8.150 EOD | 8.150 MWM DELIVERY | 8.150 OD | 8.150E | 8.150OD | 9.150E | 9.150EOD | 9.150OD



VW: 2VC498629 20

REP. MANGA CPL. P/1LD.=MERITOR= 31,55MM =0,20=

KING PIN KIT =MERITOR= 31,55MM =0,20=

CIPEC: 017696

VW: 2R0498629 20

AGRALE | VOLARE AFRICA SUL W8-RHD | FORD | 814 | 815 | VW | 5.140 EOD | 5.140 MWM DELIVERY | 7.100 | 7.120 | 8.100 | 8.120 | 8.120OD | 8.140 | 8.140CE | 8.140CKD | 8.140CO | 8.150 | 8.150 EOD | 8.150 MWM DELIVERY | 8.150 OD | 8.150E | 8.150OD | 9.150E | 9.150EOD | 9.150OD



VW: 2VC498629 30

REP. MANGA CPL. P/1LD.=MERITOR= 31,65MM =0,30=

KING PIN KIT =MERITOR= 31,65MM =0,30=

CIPEC: 017697

VW: 2R0498629 30

AGRALE | VOLARE AFRICA SUL W8-RHD | FORD | 814 | 815 | VW | 5.140 EOD | 5.140 MWM DELIVERY | 7.100 | 7.120 | 8.100 | 8.120 | 8.120OD | 8.140 | 8.140CE | 8.140CKD | 8.140CO | 8.150 | 8.150 EOD | 8.150 MWM DELIVERY | 8.150 OD | 8.150E | 8.150OD | 9.150E | 9.150EOD | 9.150OD





VW: 2VC498629CH 0

REP. MANGA CPL. P/1LD.=MERITOR= 31,35MM =STD=

KING PIN KIT =MERITOR= 31,35MM =STD=

CIPEC: 019866

VW: 2R0498629CH 0

FORD | 814 | 815 | VW | 5.140 EOD | 5.140 MWM DELIVERY | 7.100 | 7.120 | 8.100 | 8.120 | 8.120OD | 8.140 | 8.140CE | 8.140CKD | 8.140CO | 8.150 | 8.150 EOD | 8.150 MWM DELIVERY | 8.150 OD | 8.150E | 8.150OD | 9.150E | 9.150EOD | 9.150OD



VW: 2VC498629CH 10

REP. MANGA CPL. P/1LD.=MERITOR= 31,45MM =0,10=

KING PIN KIT =MERITOR= 31,45MM =0,10=

CIPEC: 019867

VW: 2R0498629CH 10

FORD | 814 | 815 | VW | 5.140 EOD | 5.140 MWM DELIVERY | 7.100 | 7.120 | 8.100 | 8.120 | 8.120OD | 8.140 | 8.140CE | 8.140CKD | 8.140CO | 8.150 | 8.150 EOD | 8.150 MWM DELIVERY | 8.150 OD | 8.150E | 8.150OD | 9.150E | 9.150EOD | 9.150OD



VW: 2VC498629CH 20

REP. MANGA CPL. P/1LD.=MERITOR= 31,55MM =0,20=

KING PIN KIT =MERITOR= 31,55MM =0,20=

CIPEC: 019868

VW: 2R0498629CH 20

FORD | 814 | 815 | VW | 5.140 EOD | 5.140 MWM DELIVERY | 7.100 | 7.120 | 8.100 | 8.120 | 8.120OD | 8.140 | 8.140CE | 8.140CKD | 8.140CO | 8.150 | 8.150 EOD | 8.150 MWM DELIVERY | 8.150 OD | 8.150E | 8.150OD | 9.150E | 9.150EOD | 9.150OD



VW: 2VC498629CH 30

REP. MANGA CPL. P/1LD.=MERITOR= 31,65MM =0,30=

KING PIN KIT =MERITOR= 31,65MM =0,30=

CIPEC: 019869

VW: 2R0498629CH 30

FORD | 814 | 815 | VW | 5.140 EOD | 5.140 MWM DELIVERY | 7.100 | 7.120 | 8.100 | 8.120 | 8.120OD | 8.140 | 8.140CE | 8.140CKD | 8.140CO | 8.150 | 8.150 EOD | 8.150 MWM DELIVERY | 8.150 OD | 8.150E | 8.150OD | 9.150E | 9.150EOD | 9.150OD



VW: T06498629

REP. MANGA CPL. P/1LD.=BRAS= 28,65X181,5 =STD=

KING PIN KIT 28,65X181,5 =STD=

CIPEC: 007857

VW: 2RD498629 / 805656

FORD | 814/815 05/1996=11/2000 | VW | 6.80 | 6.90 | 7.100 | 7.110 | 7.110S | 7.120 | 7.90S | 8.100 | 8.120 | 8.140 | 8.150 | L.80



VW: T06498629 10

REP. MANGA CPL. P/1LD.=BRAS= 28,75X181,5 =0,10=

KING PIN KIT 28,75X181,5 =0,10=

CIPEC: 017698

VW: 2RD498629 10 / 805665 10

FORD | 814/815 05/1996=11/2000 | VW | 6.80 | 6.90 | 7.100 | 7.110 | 7.110S | 7.120 | 7.90S | 8.100 | 8.120 | 8.140 | 8.150 | L.80



VW: T06498629 20

REP. MANGA CPL. P/1LD.=BRAS= 28,85X181,5 =0,20=

KING PIN KIT 28,85X181,5 =0,20=

AGRALE: BF5T311E 20

CIPEC: 017699

VW: 2RD498629 20 / 805665 20

FORD | 814/815 05/1996=11/2000 | VW | 6.80 | 6.90 | 7.100 | 7.110 | 7.110S | 7.120 | 7.90S | 8.100 | 8.120 | 8.140 | 8.150 | L.80



VW: T06498629 30

REP. MANGA CPL. P/1LD.=BRAS= 28,95X181,5 =0,30=

KING PIN KIT 28,95X181,5 =0,30=

CIPEC: 017700

VW: 2RD498629 30

FORD | 814/815 05/1996=11/2000 | VW | 6.80 | 6.90 | 7.100 | 7.110 | 7.110S | 7.120 | 7.90S | 8.100 | 8.120 | 8.140 | 8.150 | L.80



VW: T06498629CH 0

REP. MANGA CPL. P/1LD.=BRAS= 28,65X181,5 =STD=

KING PIN KIT 28,65X181,5 =STD=

CIPEC: 019846

VW: 2RD498629CH

VW | 6.80 | 6.90 | 7.100 | 7.110S | 7.90S | 8.100 | 8.140 | L.80



VW: T06498629CH 10

REP. MANGA CPL. P/1LD.=BRAS= 28,75X181,5 =0,10=

KING PIN KIT 28,75X181,5 =0,10=

CIPEC: 019847

VW: 2RD498629CH 10

VW | 6.80 | 6.90 | 6.90S | 7.100 | 7.110S | 7.90S | 8.100 | 8.140 | L.80



VW: T06498629CH 20

REP. MANGA CPL. P/1LD.=BRAS= 28,85X181,5 =0,20=

KING PIN KIT 28,85X181,5 =0,20=

CIPEC: 019848

VW: 2RD498629CH 20

VW | 6.80 | 6.90 | 6.90S | 7.100 | 7.110S | 7.90S | 8.100 | 8.140 | L.80



VW: T06498629CH 30

REP. MANGA CPL. P/1LD.=BRAS= 28,95X181,5 =0,30=

KING PIN KIT 28,95X181,5 =0,30=

CIPEC: 019849

VW: 2RD498629CH 30

VW | 6.80 | 6.90 | 6.90S | 7.100 | 7.110S | 7.90S | 8.100 | 8.140 | L.80



VW: T11498629

REP. MANGA CPL. P/1LD.=MERITOR= 40,80X233MM =STD=

AXLE REPAIR KIT COMPLETE FOR 1 SIDE =STD=40,80MM

CIPEC: 005428

VW: 805687

VW | 11.130 | 11.140 | 12.140 | 12.140H | 12.140T | 12.170BT | 13.130 | 14.140



VW: T11498629 10

REP. MANGA CPL. P/1LD.=MERITOR= 40,90X233MM =0,10=

AXLE REPAIR KIT COMPLETE FOR 1 SIDE 40,90X233MM =0

CIPEC: 019366

VW | 11.130 | 11.140 | 12.140 | 12.140H | 12.140T | 12.170 | 12.170BT | 13.130 | 14.140



VW: T11498629 20

REP. MANGA CPL. P/1LD.=MERITOR= 41,00X233MM =0,20=

AXLE REPAIR KIT COMPLETE FOR 1 SIDE 41,00X233MM =0

CIPEC: 019367

VW | 11.130 | 11.140 | 12.140 | 12.140H | 12.140T | 12.170BT | 13.130 | 14.140



VW: T11498629 30

REP. MANGA CPL. P/1LD.=MERITOR= 41,10X233MM =0,30=

AXLE REPAIR KIT COMPLETE FOR 1 SIDE 41,10X233MM =0

CIPEC: 019368

VW | 11.130 | 11.140 | 12.140 | 12.140H | 12.140T | 12.170BT | 13.130 | 14.140



**VW: T11498629CH 0**

REP. MANGA CPL. P/1LD.=MERITOR= 40,80X233MM =STD=

AXLE REPAIR KIT COMPLETE FOR 1 SIDE 40,80X233MM =S

CIPEC: 019854

VW | 11.130 | 11.140 | 12.140 | 12.140H | 12.140T | 12.170BT | 13.130 | 14.140



**VW: T11498629CH 10**

REP. MANGA CPL. P/1LD.=MERITOR= 40,90X233MM =0,10=

AXLE REPAIR KIT COMPLETE FOR 1 SIDE 40,90X233MM =0

CIPEC: 019855

VW | 11.130 | 11.140 | 12.140 | 12.140H | 12.140T | 12.170BT | 13.130 | 14.140



**VW: T11498629CH 20**

REP. MANGA CPL. P/1LD.=MERITOR= 41,00X233MM =0,20=

AXLE REPAIR KIT COMPLETE FOR 1 SIDE =STD=40,80MM

CIPEC: 019856

FORD: BF5X3111BCH 20

VW | 11.130 | 11.140 | 12.140 | 12.140H | 12.140T | 12.170BT | 13.130 | 14.140



**VW: T11498629CH 30**

REP. MANGA CPL. P/1LD.=MERITOR= 41,10X233MM =0,30=

AXLE REPAIR KIT COMPLETE FOR 1 SIDE =STD=40,80MM

CIPEC: 019857

VW | 11.130 | 11.140 | 12.140 | 12.140H | 12.140T | 12.170BT | 13.130 | 14.140





VW: T16498629

REP. MANGA CPL. P/1LD.=SIFCO=45,55X264,5 =STD=

KING PIN KIT SIFCO 2 SIDES =STD= 45,55X264,5

CIPEC: 005429  
 FORD: BF5X3111G / BF5X3111L  
 VW: 2VF498629 / TAR498629

VW | 12.180 | 14.150 | 14.170BT | 14.180 | 14.200 | 14.210 | 14.220 | 15-190 | 15.170 | 15.170E | 15.180 | 15.180E | 15.180E CONSTELLATION | 15.180EOD | 15.190E | 15.190EOD | 16.170 | 16.180CO | 16.200 | 16.210 | 16.210CO | 16.220 | 16.300 | 17.180 CUMMINS EURO 3 | 17.180 MWM EURO 3 | 17.210 | 17.210OD | 17.220 | 17.220 CUMMINS EURO 3 | 17.220 MWM EURO 2 | 17.220 MWM EURO 3 | 17.250E | 17.250E CONSTELLATION | 17.300 | 17.310 | 17.320E CONSTELLATION | 18.310 | 19.320E CONSTELLATION | 19.370 CONSTELLATION | 23.210 | 23.220 | 23.250E | 23.310 | 24.220 CUMMINS EURO 3 | 24.220 MWM EURO 3 | 24.250 | 24.250E | 24.250ECONSTELLATION | 24.320ECONSTELLATION | 25.320 CONSTELLATION | 25.370E CONSTELLATION | 26.220 | 26.260 | 26.260 CONSTELLATION | 26.260E | 26.300 | 26.310 | 31.260 | 31.260 CONSTELLATION | 31.260E | 31.310 | 31.320E CONSTELLATION | 31.370E CONSTELLATION | 35.300 | 35.300H | 40.300 | 40.300 LEITO



VW: T16498629 10

REP. MANGA CPL. P/1LD.=SIFCO=45,65X264,5 =0,10=

KING PIN KIT COMPLETE SIFCO 2 SIDES =STD= 45,65X26

CIPEC: 017685  
 FORD: BF5X3111G 10  
 VW: TAR498629 10

VW | 12.180 | 14.150 | 14.170BT | 14.180 | 14.200 | 14.210 | 14.220 | 15-190 | 15.170 | 15.170E | 15.180 | 15.180E | 15.180E CONSTELLATION | 15.180EOD | 15.190E | 15.190EOD | 16.170 | 16.180CO | 16.200 | 16.210 | 16.210CO | 16.220 | 16.300 | 17.180 CUMMINS EURO 3 | 17.180 MWM EURO 3 | 17.210 | 17.210OD | 17.220 | 17.220 CUMMINS EURO 3 | 17.220 MWM EURO 2 | 17.220 MWM EURO 3 | 17.250E | 17.250E CONSTELLATION | 17.300 | 17.310 | 17.320E CONSTELLATION | 18.310 | 19.320E CONSTELLATION | 19.370 CONSTELLATION | 23.210 | 23.220 | 23.250E | 23.310 | 24.220 CUMMINS EURO 3 | 24.220 MWM EURO 3 | 24.250 | 24.250E | 24.250ECONSTELLATION | 24.320ECONSTELLATION | 25.320 CONSTELLATION | 25.370E CONSTELLATION | 26.220 | 26.260 | 26.260 CONSTELLATION | 26.260E | 26.300 | 26.310 | 31.260 | 31.260 CONSTELLATION | 31.260E | 31.310 | 31.320E CONSTELLATION | 31.370E CONSTELLATION | 35.300 | 35.300H | 40.300 | 40.300 LEITO



VW: T16498629 20

REP. MANGA CPL. P/1LD.=SIFCO=45,75X264,5 =0,20=

KING PIN KIT COMPLETE SIFCO 2 SIDES =0,20= 45,75X2

CIPEC: 017687  
 FORD: BF5X3111G 20  
 VW: 2VF498629 20 / TAR498629 20

VW | 12.180 | 14.150 | 14.170BT | 14.180 | 14.200 | 14.210 | 14.220 | 15-190 | 15.170 | 15.170E | 15.180 | 15.180E | 15.180E CONSTELLATION | 15.180EOD | 15.190E | 15.190EOD | 16.170 | 16.180CO | 16.200 | 16.210 | 16.210CO | 16.220 | 16.300 | 17.180 CUMMINS EURO 3 | 17.180 MWM EURO 3 | 17.210 | 17.210OD | 17.220 | 17.220 CUMMINS EURO 3 | 17.220 MWM EURO 2 | 17.220 MWM EURO 3 | 17.250E | 17.250E CONSTELLATION | 17.300 | 17.310 | 17.320E CONSTELLATION | 18.310 | 19.320E CONSTELLATION | 19.370 CONSTELLATION | 23.210 | 23.220 | 23.250E | 23.310 | 24.220 CUMMINS EURO 3 | 24.220 MWM EURO 3 | 24.250 | 24.250E | 24.250ECONSTELLATION | 24.320ECONSTELLATION | 25.320 CONSTELLATION | 25.370E CONSTELLATION | 26.220 | 26.260 | 26.260 CONSTELLATION | 26.260E | 26.300 | 26.310 | 31.260 | 31.260 CONSTELLATION | 31.260E | 31.310 | 31.320E CONSTELLATION | 31.370E CONSTELLATION | 35.300 | 35.300H | 40.300 | 40.300 LEITO



VW: T16498629 30

REP. MANGA CPL. P/1LD.=SIFCO=45,85X264,5 =0,30=

KING PIN KIT COMPLETE SIFCO 2 SIDES =0,30= 45,85X2

CIPEC: 017688  
 FORD: BF5X3111G 30  
 VW: 2VF498629 30 / TAR498629 30

VW | 12.180 | 14.150 | 14.170BT | 14.180 | 14.200 | 14.210 | 14.220 | 15-190 | 15.170 | 15.170E | 15.180 | 15.180E | 15.180E CONSTELLATION | 15.180EOD | 15.190E | 15.190EOD | 16.170 | 16.180CO | 16.200 | 16.210 | 16.210CO | 16.220 | 16.300 | 17.180 CUMMINS EURO 3 | 17.180 MWM EURO 3 | 17.210 | 17.210OD | 17.220 | 17.220 CUMMINS EURO 3 | 17.220 MWM EURO 2 | 17.220 MWM EURO 3 | 17.250E | 17.250E CONSTELLATION | 17.300 | 17.310 | 17.320E CONSTELLATION | 18.310 | 19.320E CONSTELLATION | 19.370 CONSTELLATION | 23.210 | 23.220 | 23.250E | 23.310 | 24.220 CUMMINS EURO 3 | 24.220 MWM EURO 3 | 24.250 | 24.250E | 24.250ECONSTELLATION | 24.320ECONSTELLATION | 25.320 CONSTELLATION | 25.370E CONSTELLATION | 26.220 | 26.260 | 26.260 CONSTELLATION | 26.260E | 26.300 | 26.310 | 31.260 | 31.260 CONSTELLATION | 31.260E | 31.310 | 31.320E CONSTELLATION | 31.370E CONSTELLATION | 35.300 | 35.300H | 40.300 | 40.300 LEITO





VW: T16498629A

REP. MANGA CPL. P/1LD.=BRAS= 45,55X256,5 =STD=

KING PIN KIT 45,55X256,5 =STD=

CIPEC: 007858

VW | 13.170E | 13.180E | 14.150 | 14.200 | 15.170 | 15.170E | 15.180 | 15.180E | 15.190E | 17.210 | 17.300 | 17.310 | 23.210 | 23.310



VW: T16498629A 10

REP. MANGA CPL. P/1LD.=BRAS= 45,65X256,5 =0,10=

KING PIN KIT 45,65X256,5 =0,10=

CIPEC: 017689

VW | 13.170E | 13.180E | 14.150 | 14.200 | 15.170 | 15.170E | 15.180 | 15.180E | 15.190E | 17.210 | 17.300 | 17.310 | 23.210 | 23.310



VW: T16498629A 20

REP. MANGA CPL. P/1LD.=BRAS= 45,75X256,5 =0,20=

KING PIN KIT COMPLETE ONE SIDE 45,75X256,5 0,20

CIPEC: 017690

VW | 13.170E | 13.180E | 14.150 | 14.200 | 15.170 | 15.170E | 15.180 | 15.180E | 15.190E | 17.210 | 17.300 | 17.310 | 23.210 | 23.310



VW: T16498629A 30

REP. MANGA CPL. P/1LD.=BRAS= 45,85X256,5 =0,30=

KING PIN KIT 45,85X256,5 =0,30=

CIPEC: 017691

VW | 13.170E | 13.180E | 14.150 | 14.200 | 15.170 | 15.170E | 15.180 | 15.180E | 15.190E | 17.210 | 17.300 | 17.310 | 23.210 | 23.310



**VW: T16498629ACH 0**

REP. MANGA CPL. P/1LD.=BRAS= 45,55X256,5 =STD=

KING PIN KIT 45,55X256,5 =STD=

CIPEC: 019850

VW | 13.170E | 13.180E | 14.150 | 14.200 | 15.170 | 15.170E | 15.180 | 15.180E | 15.190E | 17.210 | 17.300 | 17.310 | 23.210 | 23.310



**VW: T16498629ACH 10**

REP. MANGA CPL. P/1LD.=BRAS= 45,65X256,5 =0,10=

KING PIN KIT 45,65X256,5 =0,10=

CIPEC: 019851

VW | 13.170E | 13.180E | 14.150 | 14.200 | 15.170 | 15.170E | 15.180 | 15.180E | 15.190E | 17.210 | 17.300 | 17.310 | 23.210 | 23.310



**VW: T16498629ACH 20**

REP. MANGA CPL. P/1LD.=BRAS= 45,75X256,5 =0,20=

KING PIN KIT 45,75X256,5 =0,20=

CIPEC: 019852

VW | 13.170E | 13.180E | 14.150 | 14.200 | 15.170 | 15.170E | 15.180 | 15.180E | 15.190E | 17.210 | 17.300 | 17.310 | 23.210 | 23.310



**VW: T16498629ACH 30**

REP. MANGA CPL. P/1LD.=BRAS= 45,85X256,5 =0,30=

KING PIN KIT 45,85X256,5 =0,30=

CIPEC: 019853

VW | 13.170E | 13.180E | 14.150 | 14.200 | 15.170 | 15.170E | 15.180 | 15.180E | 15.190E | 17.210 | 17.300 | 17.310 | 23.210 | 23.310



**VW: T16498629B**

REP. MANGA CPL. P/1LD.=BRAS= 45,55X256,5 =STD=

KING PIN KIT 45,55X256,5 =STD=

CIPEC: 023340

VW | 12.180 | 14.150 | 14.170BT | 14.180 | 14.200 | 14.210 | 14.220 | 15-190 | 15.170 | 15.170E | 15.180 | 15.180E | 15.180E CONSTELLATION | 15.180EOD | 15.190E | 15.190EOD | 16.170 | 16.180CO | 16.200 | 16.210 | 16.210CO | 16.220 | 16.300 | 17.180 CUMMINS EURO 3 | 17.180 MWM EURO 3 | 17.210 | 17.210OD | 17.220 | 17.220 CUMMINS EURO 3 | 17.220 MWM EURO 2 | 17.220 MWM EURO 3 | 17.250E | 17.250E CONSTELLATION | 17.300 | 17.310 | 17.320E CONSTELLATION | 18.310 | 19.320E CONSTELLATION | 19.370 CONSTELLATION | 23.210 | 23.220 | 23.250E | 23.310 | 24.220 CUMMINS EURO 3 | 24.220 MWM EURO 3 | 24.250 | 24.250E | 24.250ECONSTELLATION | 24.320ECONSTELLATION | 25.320 CONSTELLATION | 25.370E CONSTELLATION | 26.220 | 26.260 | 26.260 CONSTELLATION | 26.260E | 26.300 | 26.310 | 31.260 | 31.260 CONSTELLATION | 31.260E | 31.310 | 31.320E CONSTELLATION | 31.370E CONSTELLATION | 35.300 | 35.300H | 40.300 | 40.300 LEITO



**VW: T16498629B 10**

REP. MANGA CPL. P/1LD.=BRAS= 45,65X256,5 =0,10=

KING PIN KIT 45,65X256,5 =0,10=

CIPEC: 023341

VW | 12.180 | 14.150 | 14.170BT | 14.180 | 14.200 | 14.210 | 14.220 | 15-190 | 15.170 | 15.170E | 15.180 | 15.180E | 15.180E CONSTELLATION | 15.180EOD | 15.190E | 15.190EOD | 16.170 | 16.180CO | 16.200 | 16.210 | 16.210CO | 16.220 | 16.300 | 17.180 CUMMINS EURO 3 | 17.180 MWM EURO 3 | 17.210 | 17.210OD | 17.220 | 17.220 CUMMINS EURO 3 | 17.220 MWM EURO 2 | 17.220 MWM EURO 3 | 17.250E | 17.250E CONSTELLATION | 17.300 | 17.310 | 17.320E CONSTELLATION | 18.310 | 19.320E CONSTELLATION | 19.370 CONSTELLATION | 23.210 | 23.220 | 23.250E | 23.310 | 24.220 CUMMINS EURO 3 | 24.220 MWM EURO 3 | 24.250 | 24.250E | 24.250ECONSTELLATION | 24.320ECONSTELLATION | 25.320 CONSTELLATION | 25.370E CONSTELLATION | 26.220 | 26.260 | 26.260 CONSTELLATION | 26.260E | 26.300 | 26.310 | 31.260 | 31.260 CONSTELLATION | 31.260E | 31.310 | 31.320E CONSTELLATION | 31.370E CONSTELLATION | 35.300 | 35.300H | 40.300 | 40.300 LEITO



**VW: T16498629B 20**

REP. MANGA CPL. P/1LD.=BRAS= 45,75X256,5 =0,20=

KING PIN KIT 45,75X256,5 =0,20=

CIPEC: 023342

VW | 12.180 | 14.150 | 14.170BT | 14.180 | 14.200 | 14.210 | 14.220 | 15-190 | 15.170 | 15.170E | 15.180 | 15.180E | 15.180E CONSTELLATION | 15.180EOD | 15.190E | 15.190EOD | 16.170 | 16.180CO | 16.200 | 16.210 | 16.210CO | 16.220 | 16.300 | 17.180 CUMMINS EURO 3 | 17.180 MWM EURO 3 | 17.210 | 17.210OD | 17.220 | 17.220 CUMMINS EURO 3 | 17.220 MWM EURO 2 | 17.220 MWM EURO 3 | 17.250E | 17.250E CONSTELLATION | 17.300 | 17.310 | 17.320E CONSTELLATION | 18.310 | 19.320E CONSTELLATION | 19.370 CONSTELLATION | 23.210 | 23.220 | 23.250E | 23.310 | 24.220 CUMMINS EURO 3 | 24.220 MWM EURO 3 | 24.250 | 24.250E | 24.250ECONSTELLATION | 24.320ECONSTELLATION | 25.320 CONSTELLATION | 25.370E CONSTELLATION | 26.220 | 26.260 | 26.260 CONSTELLATION | 26.260E | 26.300 | 26.310 | 31.260 | 31.260 CONSTELLATION | 31.260E | 31.310 | 31.320E CONSTELLATION | 31.370E CONSTELLATION | 35.300 | 35.300H | 40.300 | 40.300 LEITO



**VW: T16498629B 30**

REP. MANGA CPL. P/1LD.=BRAS= 45,85X256,5 =0,30=

KING PIN KIT 45,85X256,5 =0,30=

CIPEC: 023343

VW | 12.180 | 14.150 | 14.170BT | 14.180 | 14.200 | 14.210 | 14.220 | 15-190 | 15.170 | 15.170E | 15.180 | 15.180E | 15.180E CONSTELLATION | 15.180EOD | 15.190E | 15.190EOD | 16.170 | 16.180CO | 16.200 | 16.210 | 16.210CO | 16.220 | 16.300 | 17.180 CUMMINS EURO 3 | 17.180 MWM EURO 3 | 17.210 | 17.210OD | 17.220 | 17.220 CUMMINS EURO 3 | 17.220 MWM EURO 2 | 17.220 MWM EURO 3 | 17.250E | 17.250E CONSTELLATION | 17.300 | 17.310 | 17.320E CONSTELLATION | 18.310 | 19.320E CONSTELLATION | 19.370 CONSTELLATION | 23.210 | 23.220 | 23.250E | 23.310 | 24.220 CUMMINS EURO 3 | 24.220 MWM EURO 3 | 24.250 | 24.250E | 24.250ECONSTELLATION | 24.320ECONSTELLATION | 25.320 CONSTELLATION | 25.370E CONSTELLATION | 26.220 | 26.260 | 26.260 CONSTELLATION | 26.260E | 26.300 | 26.310 | 31.260 | 31.260 CONSTELLATION | 31.260E | 31.310 | 31.320E CONSTELLATION | 31.370E CONSTELLATION | 35.300 | 35.300H | 40.300 | 40.300 LEITO



**VW: T16498629BCH 0**

REP. MANGA CPL. P/1LD.=BRAS= 45,55X256,5 =STD=

KING PIN KIT 45,55X256,5 =STD=

CIPEC: 023344

FORD | 1317 4X2 | 1317E 4X2 | 1415CUM | 1415FNH | 1417 CUMMINS | 1419 | 1422 | 1517 4X2 | 1517E 4X2 | 1519 4X2 | 1617 | 1622 | 1717 4X2 | 1717E 4X2 | 1719 4X2 | 1722 | 1722 4X2 | 2322 | 2422 | 2422 6X2 | 2428 6X2 | 2622 | 2628 6X4 | 2628E 6X4 | 3132 6X4 | 3224 | 3530 | 4432E 4X2 | F14000 | F16000 | VW | 12.180 | 14.150 | 14.170BT | 14.180 | 14.200 | 14.210 | 14.220 | 15-190 | 15.170 | 15.170E | 15.180 | 15.180E | 15.180E CONSTELLATION | 15.180EOD | 15.190E | 15.190EOD | 16.170 | 16.180CO | 16.200 | 16.210 | 16.210CO | 16.220 | 16.300 | 17.180 CUMMINS EURO 3 | 17.180 MWM EURO 3 | 17.210 | 17.210OD | 17.220 | 17.220 CUMMINS EURO 3 | 17.220 MWM EURO 2 | 17.220 MWM EURO 3 | 17.250E | 17.250E CONSTELLATION | 17.300 | 17.310 | 17.320E CONSTELLATION | 18.310 | 19.320E CONSTELLATION | 19.370 CONSTELLATION | 23.210 | 23.220 | 23.250E | 23.310 | 24.220 CUMMINS EURO 3 | 24.220 MWM EURO 3 | 24.250 | 24.250E | 24.250ECONSTELLATION | 24.320ECONSTELLATION | 25.320 CONSTELLATION | 25.370E CONSTELLATION | 26.220 | 26.260 | 26.260 CONSTELLATION | 26.260E | 26.300 | 26.310 | 31.260 | 31.260 CONSTELLATION | 31.260E | 31.310 | 31.320E CONSTELLATION | 31.370E



**VW: T16498629BCH 10**

REP. MANGA CPL. P/1LD.=BRAS= 45,65X256,5 =0,10=

KING PIN KIT 45,65X256,5 =0,10=

CIPEC: 023345

FORD | 1317 4X2 | 1317E 4X2 | 1415CUM | 1415FNH | 1417 CUMMINS | 1419 | 1422 | 1517 4X2 | 1517E 4X2 | 1519 4X2 | 1617 | 1622 | 1717 4X2 | 1717E 4X2 | 1719 4X2 | 1722 | 1722 4X2 | 2322 | 2422 | 2422 6X2 | 2428 6X2 | 2622 | 2628 6X4 | 2628E 6X4 | 3132 6X4 | 3224 | 3530 | 4432E 4X2 | F14000 | F16000 | VW | 12.180 | 14.150 | 14.170BT | 14.180 | 14.200 | 14.210 | 14.220 | 15-190 | 15.170 | 15.170E | 15.180 | 15.180E | 15.180E CONSTELLATION | 15.180EOD | 15.190E | 15.190EOD | 16.170 | 16.180CO | 16.200 | 16.210 | 16.210CO | 16.220 | 16.300 | 17.180 CUMMINS EURO 3 | 17.180 MWM EURO 3 | 17.210 | 17.210OD | 17.220 | 17.220 CUMMINS EURO 3 | 17.220 MWM EURO 2 | 17.220 MWM EURO 3 | 17.250E | 17.250E CONSTELLATION | 17.300 | 17.310 | 17.320E CONSTELLATION | 18.310 | 19.320E CONSTELLATION | 19.370 CONSTELLATION | 23.210 | 23.220 | 23.250E | 23.310 | 24.220 CUMMINS EURO 3 | 24.220 MWM EURO 3 | 24.250 | 24.250E | 24.250ECONSTELLATION | 24.320ECONSTELLATION | 25.320 CONSTELLATION | 25.370E CONSTELLATION | 26.220 | 26.260 | 26.260 CONSTELLATION | 26.260E | 26.300 | 26.310 | 31.260 | 31.260 CONSTELLATION | 31.260E | 31.310 | 31.320E CONSTELLATION | 31.370E



**VW: T16498629BCH 20**

REP. MANGA CPL. P/1LD.=BRAS= 45,75X256,5 =0,20=

KING PIN KIT 45,75X256,5 =0,20=

CIPEC: 023346

FORD | 1317 4X2 | 1317E 4X2 | 1415CUM | 1415FNH | 1417 CUMMINS | 1419 | 1422 | 1517 4X2 | 1517E 4X2 | 1519 4X2 | 1617 | 1622 | 1717 4X2 | 1717E 4X2 | 1719 4X2 | 1722 | 1722 4X2 | 2322 | 2422 | 2422 6X2 | 2428 6X2 | 2622 | 2628 6X4 | 2628E 6X4 | 3132 6X4 | 3224 | 3530 | 4432E 4X2 | F14000 | F16000 | VW | 12.180 | 14.150 | 14.170BT | 14.180 | 14.200 | 14.210 | 14.220 | 15-190 | 15.170 | 15.170E | 15.180 | 15.180E | 15.180E CONSTELLATION | 15.180EOD | 15.190E | 15.190EOD | 16.170 | 16.180CO | 16.200 | 16.210 | 16.210CO | 16.220 | 16.300 | 17.180 CUMMINS EURO 3 | 17.180 MWM EURO 3 | 17.210 | 17.210OD | 17.220 | 17.220 CUMMINS EURO 3 | 17.220 MWM EURO 2 | 17.220 MWM EURO 3 | 17.250E | 17.250E CONSTELLATION | 17.300 | 17.310 | 17.320E CONSTELLATION | 18.310 | 19.320E CONSTELLATION | 19.370 CONSTELLATION | 23.210 | 23.220 | 23.250E | 23.310 | 24.220 CUMMINS EURO 3 | 24.220 MWM EURO 3 | 24.250 | 24.250E | 24.250ECONSTELLATION | 24.320ECONSTELLATION | 25.320 CONSTELLATION | 25.370E CONSTELLATION | 26.220 | 26.260 | 26.260 CONSTELLATION | 26.260E | 26.300 | 26.310 | 31.260 | 31.260 CONSTELLATION | 31.260E | 31.310 | 31.320E CONSTELLATION | 31.370E



**VW: T16498629BCH 30**

REP. MANGA CPL. P/1LD.=BRAS= 45,85X256,5 =0,30=

KING PIN KIT 45,85X256,5 =0,30=

CIPEC: 023347

FORD | 1317 4X2 | 1317E 4X2 | 1415CUM | 1415FNH | 1417 CUMMINS | 1419 | 1422 | 1517 4X2 | 1517E 4X2 | 1519 4X2 | 1617 | 1622 | 1717 4X2 | 1717E 4X2 | 1719 4X2 | 1722 | 1722 4X2 | 2322 | 2422 | 2422 6X2 | 2428 6X2 | 2622 | 2628 6X4 | 2628E 6X4 | 3132 6X4 | 3224 | 3530 | 4432E 4X2 | F14000 | F16000 | VW | 12.180 | 14.150 | 14.170BT | 14.180 | 14.200 | 14.210 | 14.220 | 15-190 | 15.170 | 15.170E | 15.180 | 15.180E | 15.180E CONSTELLATION | 15.180EOD | 15.190E | 15.190EOD | 16.170 | 16.180CO | 16.200 | 16.210 | 16.210CO | 16.220 | 16.300 | 17.180 CUMMINS EURO 3 | 17.180 MWM EURO 3 | 17.210 | 17.210OD | 17.220 | 17.220 CUMMINS EURO 3 | 17.220 MWM EURO 2 | 17.220 MWM EURO 3 | 17.250E | 17.250E CONSTELLATION | 17.300 | 17.310 | 17.320E CONSTELLATION | 18.310 | 19.320E CONSTELLATION | 19.370 CONSTELLATION | 23.210 | 23.220 | 23.250E | 23.310 | 24.220 CUMMINS EURO 3 | 24.220 MWM EURO 3 | 24.250 | 24.250E | 24.250ECONSTELLATION | 24.320ECONSTELLATION | 25.320 CONSTELLATION | 25.370E CONSTELLATION | 26.220 | 26.260 | 26.260 CONSTELLATION | 26.260E | 26.300 | 26.310 | 31.260 | 31.260 CONSTELLATION | 31.260E | 31.310 | 31.320E CONSTELLATION | 31.370E



VW: T16498629B VP

REP. MANGA CPL. P/1LD.=BRAS= 45,65X256,5 =VPL=

KING PIN KIT 45,65X256,5 =0,10=

CIPEC: 026552  
VW



VW: T16498629CH 0

REP. MANGA CPL. P/1LD.=SIFCO=45,55X264,5 =STD=

KING PIN KIT SIFCO 2 SIDES =STD= 45,55X264,5

CIPEC: 019862  
FORD: BF5X3111CH 0 / BF5X3111LCH 0  
VW: 2VF498629CH

VW | 12.180 | 14.150 | 14.170BT | 14.180 | 14.200 | 14.210 | 14.220 | 15-190 | 15.170 | 15.170E | 15.180 | 15.180E | 15.180E CONSTELLATION | 15.180EOD | 15.190E | 15.190EOD | 16.170 | 16.180CO | 16.200 | 16.210 | 16.210CO | 16.220 | 16.300 | 17.180 CUMMINS EURO 3 | 17.180 MWM EURO 3 | 17.210 | 17.210OD | 17.220 | 17.220 CUMMINS EURO 3 | 17.220 MWM EURO 2 | 17.220 MWM EURO 3 | 17.250E | 17.250E CONSTELLATION | 17.300 | 17.310 | 17.320E CONSTELLATION | 18.310 | 19.320E CONSTELLATION | 19.370 CONSTELLATION | 23.210 | 23.220 | 23.250E | 23.310 | 24.220 CUMMINS EURO 3 | 24.220 MWM EURO 3 | 24.250 | 24.250E | 24.250ECONSTELLATION | 24.320ECONSTELLATION | 25.320 CONSTELLATION | 25.370E CONSTELLATION | 26.220 | 26.260 | 26.260 CONSTELLATION | 26.260E | 26.300 | 26.310 | 31.260 | 31.260 CONSTELLATION | 31.260E | 31.310 | 31.320E CONSTELLATION | 31.370E CONSTELLATION | 35.300 | 35.300H | 40.300 | 40.300 LEITO



VW: T16498629CH 10

REP. MANGA CPL. P/1LD.=SIFCO=45,65X264,5 =0,10=

KING PIN KIT COMPLETE SIFCO 2 SIDES =0,10= 45,65X2

CIPEC: 019863  
FORD: BF5X3111CH 10 / BF5X3111LCH 10  
VW: 2VF498629CH 10

VW | 12.180 | 14.150 | 14.170BT | 14.180 | 14.200 | 14.210 | 14.220 | 15-190 | 15.170 | 15.170E | 15.180 | 15.180E | 15.180E CONSTELLATION | 15.180EOD | 15.190E | 15.190EOD | 16.170 | 16.180CO | 16.200 | 16.210 | 16.210CO | 16.220 | 16.300 | 17.180 CUMMINS EURO 3 | 17.180 MWM EURO 3 | 17.210 | 17.210OD | 17.220 | 17.220 CUMMINS EURO 3 | 17.220 MWM EURO 2 | 17.220 MWM EURO 3 | 17.250E | 17.250E CONSTELLATION | 17.300 | 17.310 | 17.320E CONSTELLATION | 18.310 | 19.320E CONSTELLATION | 19.370 CONSTELLATION | 23.210 | 23.220 | 23.250E | 23.310 | 24.220 CUMMINS EURO 3 | 24.220 MWM EURO 3 | 24.250 | 24.250E | 24.250ECONSTELLATION | 24.320ECONSTELLATION | 25.320 CONSTELLATION | 25.370E CONSTELLATION | 26.220 | 26.260 | 26.260 CONSTELLATION | 26.260E | 26.300 | 26.310 | 31.260 | 31.260 CONSTELLATION | 31.260E | 31.310 | 31.320E CONSTELLATION | 31.370E CONSTELLATION | 35.300 | 35.300H | 40.300 | 40.300 LEITO



VW: T16498629CH 20

REP. MANGA CPL. P/1LD.=SIFCO=45,75X264,5 =0,20=

KING PIN KIT COMPLETE SIFCO 2 SIDES =0,20= 45,75X2

CIPEC: 019864  
FORD: BF5X3111CH 20 / BF5X3111LCH 20  
VW: 2VF498629CH 20

VW | 12.180 | 14.150 | 14.170BT | 14.180 | 14.200 | 14.210 | 14.220 | 15-190 | 15.170 | 15.170E | 15.180 | 15.180E | 15.180E CONSTELLATION | 15.180EOD | 15.190E | 15.190EOD | 16.170 | 16.180CO | 16.200 | 16.210 | 16.210CO | 16.220 | 16.300 | 17.180 CUMMINS EURO 3 | 17.180 MWM EURO 3 | 17.210 | 17.210OD | 17.220 | 17.220 CUMMINS EURO 3 | 17.220 MWM EURO 2 | 17.220 MWM EURO 3 | 17.250E | 17.250E CONSTELLATION | 17.300 | 17.310 | 17.320E CONSTELLATION | 18.310 | 19.320E CONSTELLATION | 19.370 CONSTELLATION | 23.210 | 23.220 | 23.250E | 23.310 | 24.220 CUMMINS EURO 3 | 24.220 MWM EURO 3 | 24.250 | 24.250E | 24.250ECONSTELLATION | 24.320ECONSTELLATION | 25.320 CONSTELLATION | 25.370E CONSTELLATION | 26.220 | 26.260 | 26.260 CONSTELLATION | 26.260E | 26.300 | 26.310 | 31.260 | 31.260 CONSTELLATION | 31.260E | 31.310 | 31.320E CONSTELLATION | 31.370E CONSTELLATION | 35.300 | 35.300H | 40.300 | 40.300 LEITO



VW: T16498629CH 30

REP. MANGA CPL. P/1LD.=SIFCO=45,85X264,5 =0,30=

KING PIN KIT COMPLETE SIFCO 2 SIDES =0,30= 45,85X2

CIPEC: 019865

FORD: BF5X3111CH 30 / BF5X3111LCH 30

VW: 2VF498629CH 30

VW | 12.180 | 14.150 | 14.170BT | 14.180 | 14.200 | 14.210 | 14.220 | 15-190 | 15.170 | 15.170E | 15.180 | 15.180E | 15.180E CONSTELLATION | 15.180EOD | 15.190E | 15.190EOD | 16.170 | 16.180CO | 16.200 | 16.210 | 16.210CO | 16.220 | 16.300 | 17.180 CUMMINS EURO 3 | 17.180 MWM EURO 3 | 17.210 | 17.210OD | 17.220 | 17.220 CUMMINS EURO 3 | 17.220 MWM EURO 2 | 17.220 MWM EURO 3 | 17.250E | 17.250E CONSTELLATION | 17.300 | 17.310 | 17.320E CONSTELLATION | 18.310 | 19.320E CONSTELLATION | 19.370 CONSTELLATION | 23.210 | 23.220 | 23.250E | 23.310 | 24.220 CUMMINS EURO 3 | 24.220 MWM EURO 3 | 24.250 | 24.250E | 24.250ECONSTELLATION | 24.

320ECONSTELLATION | 25.320 CONSTELLATION | 25.370E CONSTELLATION | 26.220 | 26.260 | 26.260 CONSTELLATION | 26.260E | 26.300 | 26.310 | 31.260 | 31.260 CONSTELLATION | 31.260E | 31.310 | 31.320E CONSTELLATION | 31.370E CONSTELLATION | 35.300 | 35.300H | 40.300 | 40.300 LEITO





**Vendas / Sales:** vendas@cipec.com.br  
**Geral / General:** cipec@cipec.com.br  
**Televendas / Phone:** +55 19 3834-9822  
**Fax / Fax:** 0800.707.9822  
**www.cipec.com.br**



Televendas: + 55 19 3834.9822



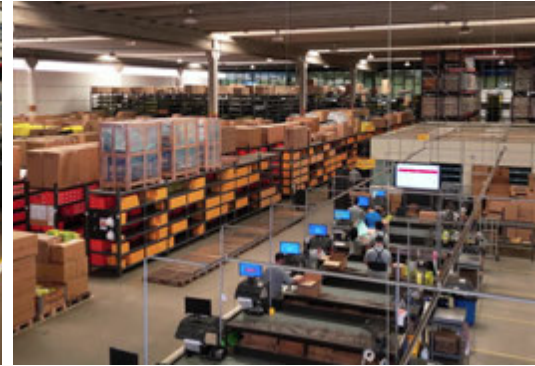
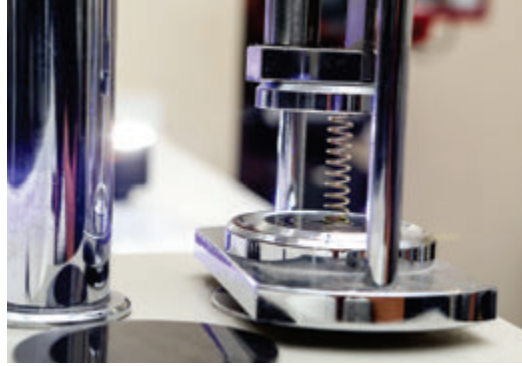
+ 55 54 3211.1800



+ 55 11 2626.8839











# CIPEC INDUSTRIAL 2024



[www.cipec.com.br](http://www.cipec.com.br)

**EMPRESA CERTIFICADA ISO 9001:2015**  
**CERTIFIED COMPANY**