



SERVOS E CILINDROS
CLUTCH SERVO AND CYLINDERS
2024

www.ntifreios.com.br

EMPRESA CERTIFICADA
CERTIFIED COMPANY ISO 9001:2015

A Cipec iniciou suas atividades em 1983 na cidade de São Caetano como um pequeno distribuidor e fabricante de peças de reposição para caminhões e ônibus. Trabalhando com empenho e seriedade, a Cipec rapidamente ampliou seu leque de produtos de distribuição, alcançando logo em seguida o status de referência nacional no mercado de reposição da linha Scania.

Em 1999, devido ao ritmo crescente dos negócios, a estrutura da Cipec já não comportava a demanda, levando a empresa a transferir suas atividades para uma área de 20.000 m² em Indaiatuba, localizada estrategicamente no interior paulista. Nesse novo local, a empresa investiu fortemente na parte fabril e agregou as linhas Volvo, VW, MWM, Cummins e Iveco.

Com amplo espaço fabril e novos nichos de mercado se abrindo, em 2003 a Cipec inovou mais uma vez, implantando uma completa linha de servos de embreagem, válvulas e reparos de freios para linha pesada. Surgiu então a NTI, uma marca Cipec que em pouco tempo ficaria conhecida no mercado, oferecendo um produto competitivo e altamente confiável.

Atualmente, a Cipec conta com mais de 170 colaboradores e comercializa mais de 22.000 itens a partir de sua unidade fabril localizada em Indaiatuba, ampliando ainda mais sua capacidade de produção e expedindo mais de 30 toneladas de produtos por dia para mais de 50 países em todo o mundo.

Cipec began its activities in 1983 in the city of São Caetano as a small distributor and manufacturer of spare parts for trucks and buses. Working with dedication and seriousness, Cipec quickly expanded its range of distribution products and soon achieved national reference status in the replacement market for the Scania line.

By 1999, its structure could no longer accommodate the growing pace of business, prompting Cipec to transfer its operations to a 20,000 m² area in Indaiatuba, strategically located in the interior of São Paulo. Strong investments were made in the manufacturing sector, and the Volvo, VW, MWM, Cummins, and Iveco lines were added.

With ample manufacturing space and new market niches emerging, Cipec innovated once again in 2003, introducing a complete line of clutch servos, valves, and brake repair kits for heavy-duty applications. Thus, NTI was born, a Cipec brand that quickly became known in the market, offering competitive and highly reliable products.

Today, Cipec employs over 170 employees and sells over 22,000 items from its manufacturing facility located in Indaiatuba, further increasing its production capacity and shipping over 30 tons of products per day to more than 50 countries worldwide.

La Cipec inició sus actividades en 1983 en la ciudad de São Caetano como un pequeño distribuidor y fabricante de repuestos para camiones y autobuses. Trabajando con dedicación y seriedad, Cipec amplió rápidamente su gama de productos de distribución y pronto alcanzó el estatus de referencia nacional en el mercado de repuestos para la línea Scania.

Para 1999, su estructura ya no podía soportar el creciente ritmo de negocios, lo que llevó a Cipec a trasladar sus operaciones a una área de 20,000 m² en Indaiatuba, estratégicamente ubicada en el interior de São Paulo. Se realizaron fuertes inversiones en el sector manufacturero y se añadieron las líneas Volvo, VW, MWM, Cummins e Iveco.

Con un amplio espacio de fabricación y nuevos nichos de mercado emergentes, Cipec innovó una vez más en 2003, introduciendo una línea completa de servos de embrague, válvulas y reparaciones de frenos para aplicaciones de servicio pesado. Así nació NTI, una marca de Cipec que rápidamente se hizo conocida en el mercado, ofreciendo productos competitivos y altamente confiables.

Hoy en día, Cipec emplea a más de 170 trabajadores y vende más de 22,000 artículos desde su planta de fabricación ubicada en Indaiatuba, aumentando aún más su capacidad de producción y enviando más de 30 toneladas de productos al día a más de 50 países en todo el mundo.



ÍNDICE POR TIPO DE PEÇAS



WABCO	03
CILINDROS	03
SERVOS	05
KNORR	22
CILINDROS	22
SERVOS	25
VARGA	33
CILINDROS	33
BENDIX	34
CILINDROS	34
DIVERSOS	36
CILINDROS	36
SERVOS	65
CONTATOS	85
ÍNDICE POR CÓDIGO PRIMÁRIO	86
ÍNDICE POR CÓDIGO NTI	91





PART TYPES INDEX

WABCO	03
CYLINDERS	03
CLUTCH SERVO	05
KNORR	22
CYLINDERS	22
CLUTCH SERVO	25
VARGA	33
CYLINDERS	33
BENDIX	34
CYLINDERS	34
DIVERSOS	36
CYLINDERS	36
CLUTCH SERVO	65
CONTACTS	85
PRIMARY INDEX CODE	86
NTI INDEX CODE	91



CILINDROS
CYLINDERS
WABCO: 2TA253861

CILINDRO F. MOTOR SIST. WABCO

ENGINE BRAKE CYLINDER WABCO

 NTI: 005097
 NTI: 022636 / 022662


VW | 17.240OT | 17.260EOT | 18.310OT | 18.320EOT | 7.100 | 7.110 | 7.120 | 8.100 | 8.120 | 8.120OD | 8.140 | 8.140CE | 8.140CKD | 8.140CO | 8.150 | 8.150 EOD | 8.150 OD | 8.150E | 8.150E PLUS | 9.150 | 9.150E | 9.150E CUMMINS DELIVERY | 9.150EOD | 9.150OD | L.80

WABCO: TN4253861

CILINDRO F. MOTOR SIST. WABCO

ENGINE BRAKE CYLINDER WABCO

 NTI: 005094
 FORD: 85HU2W087A / 85HU2W087A / BF1X20071A / BG1X2W082BA
 NTI: 021857 / 022634


VW | 12.140H | 13.170 | 14.150 | 14.200 | 14.220 | 15.170 | 16.170 | 16.220 | 16.220 LEITO | 17.210 | 24.220 | 24.250 | 35.300 | 35.300 LEITO

WABCO: 2RD253853B

FREIO MOTOR =74MM= 2-7/8

ENGINE BRAKE 74MM WABCO SYSTEM

 NTI: 005081
 NTI: 021845 / 022630 / 023471
 VW: 2R0253853B / 2RD253853 / 2RD253853C / 2RD253853D / 2RE253853 / 2RE253853B / 2TA253853B / 2TA253853C / 2TK253853
 WABCO: 4214299370 / 8845018030


FORD | 814 | 815 | 915 | VW | 12.140T | 13.150 | 13.170E | 13.180E | 15.170E | 15.180E | 15.180EOD | 15.190E | 15.190EOD | 7.100 | 7.110 | 7.120 | 8.100 | 8.120 | 8.120OD | 8.140 | 8.140CO | 8.150 | 8.150E | 8.150EOD | 8.150OD | 9.150 | 9.150E | 9.150EOD | 9.150OD | L.80

CILINDROS

CYLINDERS

WABCO: TAR253853

FREIO MOTOR =85MM= 3-3/8

ENGINE BRAKE 85MM WABCO SYSTEM

NTI: 005084

FORD: 4C452W068AA / 4C452W068DA / 4C452W068DB / XC452W068BA / XC452W068BA

NTI: 018148 / 022631 / 023642

VW: 2RH253853 / 2RH253853C / 2RP253853B / 2RP253853C / 2T0253853A / 2W0253853 /

TAR253853A / TEG253853B / TEG253853C / TLG253853 / TLG253853A / TRA253853

WABCO: 4214299690 / 8845021450 / 8845021976 / 8845023760 / 8845032810



VW | 12.140H | 12.140T | 12.170BT | 12.180 | 13.150 | 13.170 | 13.180 | 13.190 | 14.150 | 14.170BT | 14.180 | 14.200 | 15.170 | 15.180 | 15.180EOD | 15.190 | 15.190EOD | 16.170 | 16.180CO | 16.200 | 16.210 | 16.210CO | 17.180 | 17.210 | 17.210 CUMMINS EURO 2 | 17.210OD | 17.220 | 17.250E | 17.300 | 17.310 | 18.310 | 23.210 | 23.210 CUMMINS EURO 2 | 23.220 | 23.250E | 23.310 | 24.220 | 24.250 | 24.250E | 26.220 | 26.260 | 26.260E | 26.300 | 26.310 | 31.260 | 35.300 | 40.300

WABCO: TMG253853

FREIO MOTOR =99MM= 3-7/8

ENGINE BRAKE 99MM

NTI: 007404

FORD: 4C452W068BB / 4C452W068BC / XC452W068EA / XC452W068EB / XC452W068EC

NTI: 018149 / 018265 / 021854 / 023645

VW: 2RK253853 / TMG253853A

WABCO: 4214299150



VW | 11.000 (85/...) | 14.220 | 15.180EOD | 15.190EOD | 16.220 | 16.300 | 17.220 | 17.250E | 17.300 | 17.310 | 18.310 | 23.250E | 24.220 | 24.250 | 24.250E | 26.220 | 26.260 | 26.300 | 26.310 | 31.260 | 31.310 | 35.300 | 40.300

WABCO: 9650019022

KIT CILINDRO EMBREAGEM

CLUTCH CYLINDER KIT

NTI: 017900

NTI: 017901

VOLVO: 20746915 V / 23108445 V



VOLVO | VM 260 | VM 270 6X4 | VM 310 | VM 330

SERVOS
CLUTCH SERVO
WABCO: 9700514310

SERVO EMBR. =LONGO=

CLUTCH SERVO (LONG)

 NTI: 014802
 NTI: 023338


MERCEDES | 1938S | 1944S | 2638B | 2638S | ATEGO1729 | ATEGO2429 | ATRON 2729 | AXOR1933 | AXOR2036 | AXOR2041 | AXOR2533 | AXOR2536 | AXOR2541 | AXOR2544 | AXOR2641 | AXOR2644 | AXOR2831 | AXOR3341 | AXOR3344 | AXOR4141 | AXOR4144 | O500 RSD

WABCO: 9700511280 A

SERVO EMBR. 110MM TIPO WABCO

CLUTCH SERVO 110M WABCO

 NTI: 013189
 NTI: 013190 / 013191 / 013192
 VW: 2W0721257 A
 WABCO: 8845037280 A / 9700511070 A


FORD | 1722E 4X2 | 1730 ARG. | 2422 | 2422E 6X2 | 2425 | 2428E 6X2 | 2622 | 2622E 6X4 | 2626 | 2628E 6X4 | 2630 | 2631 | 2632E 6X4 | 2831 | 2932E 6X4 | 4030 | 4031 | 4331 | 4432E 4X2 | 4532E/1832E | 5031 | 5032E 6X4 | 6332E 6X4 | B1618 ONIBUS | B1621 ONIBUS | MERCEDES | 1518 | 1525 | 1620 | 1718 | 1725 | 1938S | 1944S | ATEGO1418 | ATEGO1718 | ATEGO1725 | ATEGO2425 | L1620 | L1622 | L2325 | L2635 | L2638 | LB2325 | LK2325 | LK2638 | LS1625 | LS1630 | LS1632 | LS1634 | LS1929 (FASE II) | LS1932 | LS1933 | LS1934 | LS1935 | LS1938 | LS1941 | LS2635 | LS2638 | O370 | O370 R | O370 RS | O370 RSD | O371 R | O371 RS | O371 RSD | O371 RSE | O371 RSL | O371 U | O371 UP | O400 | O400 RS | O400 RSD | O400 RSE | O400 RSL | O400 UP | O500 | O500 M | O500 R | O500 U | OF1218 | OF1319 | OF1417 | OF1418 | OF1618 | OF1620 | OF1620 PLUS | OF1721 | OF1722 | OH1421 L | OH1621 L | OH1625 | OH1625 L | OH1628 L | OH1635 L | VW | 15.180E OD MWM EURO 3 | 15.180EOD | 15.190E OD MWM EURO 3 | 15.190EOD | 16.180CO | 16.210CO | 17.180 CUMMINS EURO 3 | 17.180 MWM EURO 3 | 17.210 | 17.210 OD C/DIR.A DIREITA | 17.210E OD | 17.210OD | 17.220 | 17.220 CUMMINS EURO 3 | 17.220 MWM EURO 3 | 17.240OT | 17.250E | 17.260EOT | 17.300 | 17.310 | 18.310 | 18.310OT | 18.320EOT | 23.210 | 23.220 | 23.250E | 23.310 | 24.220 | 24.220 CUMMINS EURO 3 | 24.220 MWM EURO 3 | 24.250 | 24.250 CHILE | 24.250E | 26.220 | 26.260 | 26.260E | 26.

WABCO: 9700511200

SERVO EMBR. CANECA LONGA =BASE MAIOR= FORD

CLUTCH SERVO LONG HOUSING WABCO

 NTI: 019385
 NTI: 022857
 WABCO: 9700510250


FORD | 1722 4X2 | 2422 6X2 | 2428 6X2 | 2429 6X2 | 2622 6X4 | 2623 6X4 | 2628 6X4 | 2629 6X4

SERVOS

CLUTCH SERVO

WABCO: 9700511000

SERVO EMBR. CANECA LONGA =WABCO=

CLUTCH SERVO LONG HOUSING WABCO

NTI: 017565
 NTI: 022536 / 022870
 VW: 2W0721263A



VW | 15.180EOD | 15.190EOD | 16.270CO | 17.210E OD | 17.240CO | 17.260CO

WABCO: 9700512170

SERVO EMBR. DAF/MAN

CLUTCH SERVO DAF/MAN

NTI: 026026
 MAN: 81307256060
 NTI: 026402 / 026408



DAF | XF | DAF | XF

WABCO: 9700512270

SERVO EMBR. IVECO N. STRALIS 410/460 =HASTE CURTA=

CLUTCH SERVO IVECO STRALIS 410/460

NTI: 015449
 IVECO: 5801591678
 NTI: 017158
 WABCO: 9700512310



DIVERSOS | IVECO | NOVO STRALIS

SERVOS

CLUTCH SERVO

WABCO: 9700511900

SERVO EMBR. O-500 TIPO WABCO

CLUTCH SERVO O-500 WABCO

NTI: 018755
NTI: 025423



MERCEDES | O500 M | OF1417 | OF1418 | OF1721 | OF1722

WABCO: 9700511630

SERVO EMBR. S/ IND. DESGASTE

CLUTCH SERVO (NO ABLATION INDICATOR)

NTI: 014801
MERCEDES: 0002950718
NTI: 022858 / 022859
VW: 2Z0721257
WABCO: 9700511250



FORD | 1722E 4X2 | 1730 | 1730 ARG. | 2422 | 2422E 6X2 | 2425 | 2428E 6X2 | 2622 | 2622E 6X4 | 2626 | 2628E 6X4 | 2630 | 2631 | 2632E 6X4 | 2831 | 2932E 6X4 | 3222 | 3224 | 4030 | 4031 | 4331 | 4432E 4X2 | 4532E/1832E | 5031 | 5032E 6X4 | 6332E 6X4 | B1618 ONIBUS | B1621 ONIBUS | IVECO | NOVO STRALIS | STRALIS |
MERCEDES | 1518 | 1525 | 1620 | 1718 | 1725 | ATEGO1418 | ATEGO1718 | ATEGO1725 | ATEGO2425 | L1620 | L1622 | L2325 | L2635 | LB2325 | LK2325 | LS1625 | LS1630 | LS1632 | LS1634 | LS1929 (FASE II) | LS1932 | LS1933 | LS1934 | LS1935 | LS1941 | LS2635 | O370 | O370 R | O370 RS | O370 RSD | O371 R | O371 RS | O371 RSD | O371 RSE | O371 RSL | O371 U | O371 UP | O400 | O400 RS | O400 RSD | O400 RSE | O400 RSL | O500 | O500 M | O500 R | O500 U | OF1218 | OF1319 | OF1417 | OF1418 | OF1618 | OF1620 | OF1620 PLUS | OF1721 | OF1722 | OH1421 L | OH1621 L | OH1625 | OH1625 L | OH1628 L | OH1635 L | VW | 15.180E OD MWM EURO 3 | 15.180EOD | 15.190E OD MWM EURO 3 | 15.190EOD | 16.180CO | 16.210CO | 17.180 CUMMINS EURO 3 | 17.180 MWM EURO 3 | 17.210 | 17.210 OD C/DIR.A DIREITA | 17.210E OD | 17.210E OD MWM EURO 3 | 17.210OD | 17.220 | 17.220 CUMMINS EURO 3 | 17.220 MWM EURO 3 | 17.240OT | 17.250E | 17.260EOT | 17.300 | 17.310 | 18.310 | 18.310OT | 18.320EOT | 23.210 | 23.220 | 23.250E | 23.310 | 24.220 | 24.220 CUMMINS EURO 3 | 24.220 MWM EURO 3 | 24.250 | 24.250 CHILE | 24.250E | 26.220 |

WABCO: 9700516420

SERVO EMBREAGEM MAN

CLUTCH SERVO MAN REP. KIT W/COVER

NTI: 025059
NTI: 025060 / 025882



DIVERSOS | MAN | 10.160 ADVANTECH MAN | 10.160PLUS DELIVERY | 13.190 ADVANTECH MAN | 13.190 WORKER EURO V | 15.190 ADVANTECH MAN | 15.190 OD EURO 5 MAN | 15.190 WORKER EURO V | 17.190 ADVANTECH MAN | 17.190 WORKER EURO V | 17.230 ADVANTECH MAN | 17.230 WORKER EURO V | 17.280 ADVANTECH MAN | 23.230 WORKER EURO V | 23.330 ADVANTECH MAN | 24.280 ADVANTECH MAN | 26.280 ADVANTECH MAN | 31.280 ADVANTECH MAN | 5.150 ADVANTECH MAN | 5.150 OD | 8.160 ADVANTECH MAN | 8.160 DELIVERY | 8.160 OD | 9.160 ADVANTECH MAN | 9.160 DELIVERY | 9.160 OD

SERVOS

CLUTCH SERVO

WABCO: 2T2721261E

SERVO EMBREAGEM MAN

CLUTCH SERVO MAN

NTI: 027234
 NTI: 027238



DIVERSOS | MAN | 13.190 WORKER EURO V | 15.190 WORKER EURO V | 17.190 WORKER EURO V | 17.230 WORKER EURO V | 17.330 ADVANTECH | 19.330T ADVANTECH | 23.230 WORKER EURO V | 24.330 ADVANTECH | 25.330T ADVANTECH | 26.330T ADVANTECH | 26.360T ADVANTECH | 26.390T ADVANTECH | 26.420T ADVANTECH | 31.330 ADVANTECH | 31.390 ADVANTECH

WABCO: 9700515994

ALOJAMENTO PNEUMATICO

BRAKE SERVO PNEUMATIC HOUSING

NTI: 023882



MERCEDES | 1938S | 1944S | 2638B | 2638S | ATEGO1729 | ATEGO2429 | ATRON 2729 | AXOR1933 | AXOR2036 | AXOR2041 | AXOR2533 | AXOR2536 | AXOR2541 | AXOR2544 | AXOR2641 | AXOR2644 | AXOR2831 | AXOR3341 | AXOR3344 | AXOR4141 | AXOR4144 | O500 RSD

SERVO EMBR. =LONGO=
 CLUTCH SERVO (LONG)

WABCO: 9700510134

CIL. CURTO SERVO EMBR. S/INDIC.

CLUTCH SERVO SHORT HOUSING

NTI: 006456
 NTI: 022690 / 022797



SERVO EMBR. 110MM TIPO WABCO
 CLUTCH SERVO 110M WABCO

FORD | 1722E 4X2 | 1730 ARG. | 2422 | 2422E 6X2 | 2425 | 2428E 6X2 | 2622 | 2622E 6X4 | 2626 | 2628E 6X4 | 2630 | 2631 | 2632E 6X4 | 2831 | 2932E 6X4 | 4030 | 4031 | 4331 | 4432E 4X2 | 4532E/1832E | 5031 | 5032E 6X4 | 6332E 6X4 | B1618 ONIBUS | B1621 ONIBUS | MERCEDES | 1518 | 1525 | 1620 | 1718 | 1725 | 1938S | 1944S | ATEGO1418 | ATEGO1718 | ATEGO1725 | ATEGO2425 | L1620 | L1622 | L2325 | L2635 | L2638 | LB2325 | LK2325 | LK2638 | LS1625 | LS1630 | LS1632 | LS1634 | LS1929 (FASE II) | LS1932 | LS1933 | LS1934 | LS1935 | LS1938 | LS1941 | LS2635 | LS2638 | O370 | O370 R | O370 RS | O370 RSD | O371 R | O371 RS | O371 RSD | O371 RSE | O371 RSL | O371 U | O371 UP | O400 | O400 RS | O400 RSD | O400 RSE | O400 RSL | O400 UP | O500 | O500 M | O500 R | O500 U | OF1218 |

SERVOS

CLUTCH SERVO

WABCO: 9709020124

CIL. LONGO SERVO EMBR. MAN =WABCO=

CLUTCH SERVO HOUSING LONG TYPE . MAN WABCO

NTI: 024436



MAN | 15.190 OD EURO 5 MAN | 17.230 OD EURO V MAN | 17.2800T MAN

SERVO EMBR. C/ ACIONAM. TRANS.
SHIFT =MAN=
CLUTCH SERVO =MAN=

WABCO: 9709030104

CIL. LONGO SERVO EMBR. S/INDIC.

CLUTCH SERVO HOUSING MBB (NO WEAR DOWN

NTI: 006457

NTI: 022953 / 022954



FORD | 1722E 4X2 | 1730 | 1730 ARG. | 2422 | 2422E 6X2 | 2425 | 2428E 6X2 | 2622 | 2622E 6X4 | 2626 | 2628E 6X4 | 2630 | 2631 | 2632E 6X4 | 2831 | 2932E 6X4 | 3222 | 3224 | 4030 | 4031 | 4331 | 4432E 4X2 | 4532E/1832E | 5031 | 5032E 6X4 | 6332E 6X4 | B1618 ONIBUS | B1621 ONIBUS | IVECO | NOVO STRALIS | STRALIS | MERCEDES | 1518 | 1525 | 1620 | 1718 | 1725 | 1938S | 1944S | ATEGO1418 | ATEGO1718 | ATEGO1725 | ATEGO2425 | L1620 | L1622 | L2325 | L2635 | L2638 | LB2325 | LK2325 | LK2638 | LS1625 | LS1630 | LS1632 | LS1634 | LS1929 (FASE II) | LS1932 | LS1933 | LS1934 | LS1935 | LS1938 | LS1941 | LS2635 | LS2638 | O370 | O370 R | O370 RS | O370 RSD | O371 R | O371 RS | O371 RSD | O371 RSE | O371 RSL | O371 U | O371 UP | O400 | O400 RS | O400 RSD | O400 RSE | O400 RSL | O400

SERVO EMBR. S/ IND. DESGASTE
CLUTCH SERVO (NO ABLATION
INDICATOR)

WABCO: 9700511000 C

CIL. LONGO SERVO EMBR. VW =WABCO=

CLUTCH SERVO LONG HOUSING WABCO TYPE

NTI: 018823

NTI: 023860

VW: 2Z0721261A C

WABCO: 9709020174 C



VW | 15.180EOD | 15.190EOD | 16.270CO | 17.210E OD | 17.240CO | 17.260CO

SERVO EMBR. CANECA LONGA =
WABCO=
CLUTCH SERVO LONG HOUSING
WABCO

SERVOS

CLUTCH SERVO

WABCO: 9700510174

CIL. SERVO EMBR. FORD

CLUTCH SERVO HOUSING

NTI: 017627



FORD | 1722 4X2 | 2422 6X2 | 2428 6X2 | 2429 6X2 | 2622 6X4 | 2623 6X4 | 2628 6X4 |
2629 6X4 | VW | 15.180EOD | 15.190EOD | 16.270CO | 17.210E OD | 17.240CO | 17.260CO

SERVO EMBR. CANECA LONGA =
WABCO=
CLUTCH SERVO LONG HOUSING
WABCO

WABCO: 9700510010 C

CIL. SERVO EMBR. MOD. ELETRONICO =ACTROS=

CLUTCH SERVO =ACTROS=

NTI: 023731



MERCEDES | ACTROS 2546 | ACTROS 2646 | ACTROS 2655 | ACTROS 4844

SERVO EMBR. MOD. ELETRONICO =
ACTROS=
CLUTCH SERVO =ACTROS=

WABCO: 9709020274

CIL. SERVO EMBR. O 500

CLUTCH SERVO HOUSINH O500

NTI: 013204



MERCEDES | O500 M | OF1417 | OF1418 | OF1721 | OF1722

SERVO EMBR. O-500 TIPO WABCO
CLUTCH SERVO O-500 WABCO

SERVOS

CLUTCH SERVO

WABCO: 9700512270 C

CIL. SERVO EMBR. STRALIS 410/460

CLUTCH SERVO HOUSING STRALIS 410/460

NTI: 016534



IVECO | NOVO STRALIS | NOVO TRAKKER



SERVO EMBR. IVECO N. STRALIS 410/460 =HASTE CURTA= CLUTCH SERVO IVECO STRALIS 410/460

WABCO: 8977541814

GUARDA PO SERVO EMBR. MBB

DUST COVER CLUTCH SERVO MBB

NTI: 006463
NTI: 006464 / 023313 / 023515
WABCO: 8977548824



FORD | 1722E 4X2 | 1730 ARG. | 2422 | 2422E 6X2 | 2425 | 2428E 6X2 | 2622 | 2622E 6X4 | 2626 | 2628E 6X4 | 2630 | 2631 | 2632E 6X4 | 2831 | 2932E 6X4 | 4030 | 4031 | 4331 | 4432E 4X2 | 4532E/1832E | 5031 | 5032E 6X4 | 6332E 6X4 | B1618 ONIBUS | B1621 ONIBUS | MERCEDES | 1518 | 1525 | 1620 | 1718 | 1725 | 1938S | 1944S | 2638S | ATEGO1418 | ATEGO1718 | ATEGO1725 | ATEGO1729 | ATEGO2425 | ATEGO2429 | ATRON 2729 | AXOR1933 | AXOR2036 | AXOR2533 | AXOR2831 | AXOR3341 | AXOR3344 | AXOR4141 | AXOR4144 | L1620 | L1622 | L2325 | L2635 | L2638 | LB2325 | LK2325 | LK2638 | LS1625 | LS1630 | LS1632 | LS1634 | LS1929 (FASE II) | LS1932 | LS1933 | LS1934 | LS1935 | LS1938 | LS1941 | LS2635 | LS2638 | O370 | O370 R | O370 RS | O370 RSD | O371 R | O371 RS |



SERVO EMBR. 110MM TIPO WABCO CLUTCH SERVO 110M WABCO

WABCO: 9700511514

GUIA VALVULA PNEUMATICA SERVO

SERVO PNEUMATIC VALVE GUIDE

NTI: 012033



FORD | 1722E 4X2 | 1730 | 1730 ARG. | 2422 | 2422 6X4 | 2422E 6X2 | 2425 | 2425 6X4 | 2428E 6X2 | 2622 | 2622E 6X4 | 2626 | 2628E 6X4 | 2630 | 2631 | 2632E 6X4 | 2831 | 2932E 6X4 | 3222 | 3224 | 3530 | 4030 | 4031 | 4331 | 4432E 4X2 | 4532E/1832E | 5031 | 5032E 6X4 | 6332E 6X4 | B1618 ONIBUS | B1621 ONIBUS | IVECO | STRALIS | MERCEDES | 1318C | 1518 | 1525 | 1620 | 1718 | 1725 | 1938S | 1944S | ATEGO1418 | ATEGO1718 | ATEGO1725 | ATEGO2425 | L1620 | L1622 | L2325 | L2635 | L2638 | LB2325 | LK2325 | LK2638 | LS1625 | LS1630 | LS1632 | LS1634 | LS1929 (FASE II) | LS1932 | LS1933 | LS1934 | LS1935 | LS1938 | LS1941 | LS2635 | LS2638 | O370 | O370 R | O370 RS | O370 RSD | O371 R | O371 RS | O371 RSD | O371 RSE | O371 RSL | O371 U | O371 UP | O400 | O400 RS | O400 RSD | O400



SERVO EMBR. 110MM TIPO WABCO CLUTCH SERVO 110M WABCO

SERVOS

CLUTCH SERVO

WABCO: 9700517332

HASTE ACIONAMENTO

ACTION SHAT

NTI: 024593



MERCEDES | 1938S | 1944S | 2638B | 2638S | ATEGO1729 | ATEGO2429 | ATRON 2729 |
 AXOR1933 | AXOR2036 | AXOR2041 | AXOR2533 | AXOR2536 | AXOR2541 | AXOR2544 |
 AXOR2641 | AXOR2644 | AXOR2831 | AXOR3341 | AXOR3344 | AXOR4141 | AXOR4144 |
 O500 RSD

SERVO EMBR. =LONGO=
 CLUTCH SERVO (LONG)

WABCO: 8845029614

HASTE EXT. SERVO EMBREAGEM =MBB=

ROD CLUTCH SERVO MBB

NTI: 009685

NTI: 023507 / 023824



FORD | 1722E 4X2 | 1730 ARG. | 2422 | 2422E 6X2 | 2425 | 2428E 6X2 | 2622 | 2622E 6X4 |
 2626 | 2628E 6X4 | 2630 | 2631 | 2632E 6X4 | 2831 | 2932E 6X4 | 4030 | 4031 | 4331 | 4432E
 4X2 | 4532E/1832E | 5031 | 5032E 6X4 | 6332E 6X4 | B1618 ONIBUS | B1621 ONIBUS |
 MERCEDES | 1518 | 1525 | 1620 | 1718 | 1725 | 1938S | 1944S | ATEGO1418 | ATEGO1718 |
 ATEGO1725 | ATEGO2425 | L1620 | L1622 | L2325 | L2635 | L2638 | LB2325 | LK2325 |
 LK2638 | LS1625 | LS1630 | LS1632 | LS1634 | LS1929 (FASE II) | LS1932 | LS1933 | LS1934
 | LS1935 | LS1938 | LS1941 | LS2635 | LS2638 | O370 | O370 R | O370 RS | O370 RSD | O371
 R | O371 RS | O371 RSD | O371 RSE | O371 RSL | O371 U | O371 UP | O400 | O400 RS |
 O400 RSD | O400 RSE | O400 RSL | O400 UP | O500 | O500 M | O500 R | O500 U | OF1218 |

SERVO EMBR. 110MM TIPO WABCO
 CLUTCH SERVO 110M WABCO

WABCO: 9709016312

HASTE INT. SERVO EMBR. =WABCO= LONGO

LONG ROD CLUTCH SERVO WABCO TYPE

NTI: 012713



FORD | 1722E 4X2 | 1730 | 1730 ARG. | 2422 | 2422E 6X2 | 2425 | 2428E 6X2 | 2622 | 2622E
 6X4 | 2626 | 2628E 6X4 | 2630 | 2631 | 2632E 6X4 | 2831 | 2932E 6X4 | 3222 | 3224 | 4030 |
 4031 | 4331 | 4432E 4X2 | 4532E/1832E | 5031 | 5032E 6X4 | 6332E 6X4 | B1618 ONIBUS |
 B1621 ONIBUS | IVECO | NOVO STRALIS | STRALIS | MERCEDES | 1518 | 1525 | 1620 |
 1718 | 1725 | 1938S | 1944S | ATEGO1418 | ATEGO1718 | ATEGO1725 | ATEGO2425 | L1620
 | L1622 | L2325 | L2635 | L2638 | LB2325 | LK2325 | LK2638 | LS1625 | LS1630 | LS1632 |
 LS1634 | LS1929 (FASE II) | LS1932 | LS1933 | LS1934 | LS1935 | LS1938 | LS1941 | LS2635
 | LS2638 | O370 | O370 R | O370 RS | O370 RSD | O371 R | O371 RS | O371 RSD | O371 RSE
 | O371 RSL | O371 U | O371 UP | O400 | O400 RS | O400 RSD | O400 RSE | O400 RSL | O400

SERVO EMBR. S/ IND. DESGASTE
 CLUTCH SERVO (NO ABLATION
 INDICATOR)

SERVOS

CLUTCH SERVO

WABCO: 24872

HASTE SERVO SHIFT (MENOR)

HASTE SERVO SHIFT (MENOR)

NTI: 024872



DIVERSOS | IVECO | STRALIS | MAN | TGX | RENAULT | PREMIUM | VW | 17.280 | 19.330 | 19.370 | 24.280 | 25.370 | 31.330 | 31.370E

SERVO SHIFT ZF
CLUTCH SERVO SHIFT ZF TYPE

WABCO: 9701509232 JB

JG. BOBINAS SERVO ACTROS

SERVO ACTROS COIL SET

NTI: 026083



MERCEDES | ACTROS 2546 | ACTROS 2646 | ACTROS 2655 | ACTROS 4844

SERVO EMBR. MOD. ELETRONICO =
ACTROS=
CLUTCH SERVO =ACTROS=

WABCO: 8995061502

PISTAO MENOR SERVO EMBREAGEM - WABCO

CLUTCH SERVO PISTON

NTI: 007719



FORD | 1722E 4X2 | 1730 | 1730 ARG. | 2422 | 2422E 6X2 | 2425 | 2428E 6X2 | 2622 | 2622E 6X4 | 2626 | 2628E 6X4 | 2630 | 2631 | 2632E 6X4 | 2831 | 2932E 6X4 | 3222 | 3224 | 4030 | 4031 | 4331 | 4432E 4X2 | 4532E/1832E | 5031 | 5032E 6X4 | 6332E 6X4 | B1618 ONIBUS | B1621 ONIBUS | IVECO | NOVO STRALIS | MERCEDES | 1518 | 1525 | 1620 | 1718 | 1725 | 1938S | 1944S | ATEGO1418 | ATEGO1718 | ATEGO1725 | ATEGO2425 | L1620 | L1622 | L2325 | L2635 | L2638 | LB2325 | LK2325 | LK2638 | LS1625 | LS1630 | LS1632 | LS1634 | LS1929 (FASE II) | LS1932 | LS1933 | LS1934 | LS1935 | LS1938 | LS1940 | LS1941 | LS2635 | LS2638 | O370 | O370 R | O370 RS | O370 RSD | O371 R | O371 RS | O371 RSD | O371 RSE | O371 RSL | O371 U | O371 UP | O400 | O400 RS | O400 RSD | O400 RSE | O400 RSL | O400

SERVO EMBR. 110MM TIPO WABCO
CLUTCH SERVO 110M WABCO



SERVOS

CLUTCH SERVO

WABCO: 9700510494

PROTETOR DESCARGA

DESCHARGE PROTECTION

NTI: 024689



MERCEDES | 1938S | 1944S | 2638B | 2638S | ATEGO1729 | ATEGO2429 | ATRON 2729 | AXOR1933 | AXOR2036 | AXOR2041 | AXOR2533 | AXOR2536 | AXOR2541 | AXOR2544 | AXOR2641 | AXOR2644 | AXOR2831 | AXOR3341 | AXOR3344 | AXOR4141 | AXOR4144 | O500 RSD

SERVO EMBR. =LONGO=
CLUTCH SERVO (LONG)

WABCO: 9700519562 P

REP. SERVO EMBR. =PARCIAL= TP. WABCO

CLUTCH SERVO REPAIR KIT WABCO (PARTIAL)

NTI: 007179

NTI: 022693

WABCO: 9700519062 P / 9700519542 P



FORD | 1722E 4X2 | 1730 | 1730 ARG. | 2422 | 2422E 6X2 | 2425 | 2428E 6X2 | 2622 | 2622E 6X4 | 2626 | 2628E 6X4 | 2630 | 2631 | 2632E 6X4 | 2831 | 2932E 6X4 | 3222 | 3224 | 4030 | 4031 | 4331 | 4432E 4X2 | 4532E/1832E | 5031 | 5032E 6X4 | 6332E 6X4 | B1618 ONIBUS | B1621 ONIBUS | IVECO | NOVO STRALIS | STRALIS | MERCEDES | 1518 | 1525 | 1620 | 1718 | 1725 | 1938S | 1944S | ATEGO1418 | ATEGO1718 | ATEGO1725 | ATEGO2425 | L1620 | L1622 | L2325 | L2635 | L2638 | LB2325 | LK2325 | LK2638 | LS1625 | LS1630 | LS1632 | LS1634 | LS1929 (FASE II) | LS1932 | LS1933 | LS1934 | LS1935 | LS1938 | LS1941 | LS2635 | LS2638 | O370 | O370 R | O370 RS | O370 RSD | O371 R | O371 RS | O371 RSD | O371 RSE | O371 RSL | O371 U | O371 UP | O400 | O400 RS | O400 RSD | O400 RSE | O400 RSL | O400

SERVO EMBR. S/ IND. DESGASTE
CLUTCH SERVO (NO ABLATION
INDICATOR)

WABCO: 9700510010 CN

REP. SERVO EMBR. ACTROS

REPAIR KIT CLUTCH SERVO ACTROS

NTI: 023811

MERCEDES: 0002500562 R

NTI: 018675 / 022910

WABCO: 9701500010 R



MERCEDES | ACTROS 2546 | ACTROS 2646 | ACTROS 2655 | ACTROS 4844

SERVO EMBR. MOD. ELETRONICO =
ACTROS=
CLUTCH SERVO =ACTROS=



SERVOS

CLUTCH SERVO

WABCO: 9700510010 P

REP. SERVO EMBR. ACTROS =PARCIAL=

REPAIR KIT CLUTCH SERVO ACTROS PARTIAL

NTI: 019350
 MERCEDES: 0002500562 P
 NTI: 022911
 WABCO: 9701500010 P / 9701509232 P



MERCEDES | ACTROS 2546 | ACTROS 2646 | ACTROS 2655 | ACTROS 4844

SERVO EMBR. MOD. ELETRONICO =
 ACTROS=
 CLUTCH SERVO =ACTROS=

WABCO: 9700511202

REP. SERVO EMBR. CANECA LONGA WABCO

CLUTCH SERVO REPAIR KIT WABCO LONG HOUSING

NTI: 016060
 NTI: 024758



VW | 15.180EOD | 15.190EOD | 16.270CO | 17.210E OD | 17.240CO | 17.260CO

SERVO EMBR. CANECA LONGA =
 WABCO=
 CLUTCH SERVO LONG HOUSING
 WABCO

WABCO: 9700512282

REP. SERVO EMBR. CANECA LONGA WABCO (COM 3/2 VIAS)

CLUTCH SERVO REPAIR KIT WABCO

NTI: 018559



VW | 15.180EOD | 15.190EOD | 16.270CO | 17.210E OD | 17.240CO | 17.260CO

SERVO EMBR. CANECA LONGA =
 WABCO=
 CLUTCH SERVO LONG HOUSING
 WABCO

SERVOS

CLUTCH SERVO

WABCO: 9700519172

REP. SERVO EMBR. MBB 0500

CLUTCH SERVO REPAIR KIT MBB O 500

NTI: 007776
NTI: 022692

MERCEDES | O500 M | OF1417 | OF1418 | OF1721 | OF1722

SERVO EMBR. O-500 TIPO WABCO
CLUTCH SERVO O-500 WABCO

WABCO: 9700519742 P

REP. SERVO EMBR. PARCIAL 1944/2638 WABCO

CLUTCH SERVO REPAIR KIT 1944/2638 (PARTIAL) WABCO

NTI: 007424
MERCEDES: 0002952818 P
NTI: 022694MERCEDES | 1938S | 1944S | 2638B | 2638S | ATEGO1729 | ATEGO2429 | ATRON 2729 |
AXOR1933 | AXOR2036 | AXOR2041 | AXOR2533 | AXOR2536 | AXOR2541 | AXOR2544 |
AXOR2641 | AXOR2644 | AXOR2831 | AXOR3341 | AXOR3344 | AXOR4141 | AXOR4144 |
O500 RSDSERVO EMBR. -LONGO=
CLUTCH SERVO (LONG)

WABCO: 9700519742 PG

REP. SERVO EMBR. PARCIAL 1944/2638 WABCO

CLUTCH SERVO REPAIR KIT 1944/2638 (PARTIAL) WABCO

NTI: 007461
MERCEDES: 0002952818 PG
NTI: 022726MERCEDES | 1938S | 1944S | 2638B | 2638S | ATEGO1729 | ATEGO2429 | ATRON 2729 |
AXOR1933 | AXOR2036 | AXOR2041 | AXOR2533 | AXOR2536 | AXOR2541 | AXOR2544 |
AXOR2641 | AXOR2644 | AXOR2831 | AXOR3341 | AXOR3344 | AXOR4141 | AXOR4144 |
O500 RSDSERVO EMBR. -LONGO=
CLUTCH SERVO (LONG)

SERVOS

CLUTCH SERVO

WABCO: 9700519062 PG

REP. SERVO EMBR. PARCIAL S/EMBOLO =WABCO=

CLUTCH SERVO REPAIR KIT (NO PISTON) WABCO

NTI: 007187
 NTI: 022711
 WABCO: 9700519562 PG



SERVO EMBR. 110MM TIPO WABCO
 CLUTCH SERVO 110M WABCO

FORD | 1722E 4X2 | 1730 ARG. | 2422 | 2422E 6X2 | 2425 | 2428E 6X2 | 2622 | 2622E 6X4 | 2626 | 2628E 6X4 | 2630 | 2631 | 2632E 6X4 | 2831 | 2932E 6X4 | 4030 | 4031 | 4331 | 4432E 4X2 | 4532E/1832E | 5031 | 5032E 6X4 | 6332E 6X4 | B1618 ONIBUS | B1621 ONIBUS | MERCEDES | 1518 | 1525 | 1620 | 1718 | 1725 | 1938S | 1944S | ATEGO1418 | ATEGO1718 | ATEGO1725 | ATEGO2425 | L1620 | L1622 | L2325 | L2635 | L2638 | LB2325 | LK2325 | LK2638 | LS1625 | LS1630 | LS1632 | LS1634 | LS1929 (FASE II) | LS1932 | LS1933 | LS1934 | LS1935 | LS1938 | LS1941 | LS2635 | LS2638 | O370 | O370 R | O370 RS | O370 RSD | O371 R | O371 RS | O371 RSD | O371 RSE | O371 RSL | O371 U | O371 UP | O400 | O400 RS | O400 RSD | O400 RSE | O400 RSL | O400 UP | O500 | O500 M | O500 R | O500 U | OF1218 |

WABCO: 9700519562

REP. SERVO EMBR. TP. WABCO

CLUTCH SERVO REPAIR KIT WABCO

NTI: 004110
 NTI: 006450



SERVO EMBR. S/ IND. DESGASTE
 CLUTCH SERVO (NO ABLATION INDICATOR)

FORD | 1722E 4X2 | 1730 | 1730 ARG. | 2422 | 2422E 6X2 | 2425 | 2428E 6X2 | 2622 | 2622E 6X4 | 2626 | 2628E 6X4 | 2630 | 2631 | 2632E 6X4 | 2831 | 2932E 6X4 | 3222 | 3224 | 4030 | 4031 | 4331 | 4432E 4X2 | 4532E/1832E | 5031 | 5032E 6X4 | 6332E 6X4 | B1618 ONIBUS | B1621 ONIBUS | IVECO | NOVO STRALIS | STRALIS | MERCEDES | 1518 | 1525 | 1620 | 1718 | 1725 | 1938S | 1944S | ATEGO1418 | ATEGO1718 | ATEGO1725 | ATEGO2425 | L1620 | L1622 | L2325 | L2635 | L2638 | LB2325 | LK2325 | LK2638 | LS1625 | LS1630 | LS1632 | LS1634 | LS1929 (FASE II) | LS1932 | LS1933 | LS1934 | LS1935 | LS1938 | LS1941 | LS2635 | LS2638 | O370 | O370 R | O370 RS | O370 RSD | O371 R | O371 RS | O371 RSD | O371 RSE | O371 RSL | O371 U | O371 UP | O400 | O400 RS | O400 RSD | O400 RSE | O400 RSL | O400 UP

WABCO: 9700519952

REP. SERVO EMBR. TP. WABCO (C.SUORTE)

CLUTCH SERVO REPAIR KIT WABCO

NTI: 018364



SERVO EMBR. IVECO N. STRALIS
 410/460 =HASTE CURTA=
 CLUTCH SERVO IVECO STRALIS 410/
 460

IVECO | NOVO STRALIS | NOVO TRAKKER

SERVOS

CLUTCH SERVO

WABCO: 9700519542

REP. SERVO EMBR. TP. WABCO (COM SUPORTE)

CLUTCH SERVO REPAIR KIT WABCO

NTI: 004109

NTI: 003027 / 004111 / 006290 / 022059 / 022617

VW: 2RP721457

WABCO: 9700519062 / 9700519552 / 9700519832

SERVO EMBR. 110MM TIPO WABCO
CLUTCH SERVO 110M WABCO

FORD | 1722E 4X2 | 1730 | 1730 ARG. | 2422 | 2422E 6X2 | 2425 | 2428E 6X2 | 2622 | 2622E 6X4 | 2626 | 2628E 6X4 | 2630 | 2631 | 2632E 6X4 | 2831 | 2932E 6X4 | 4030 | 4031 | 4331 | 4432E 4X2 | 4532E/1832E | 5031 | 5032E 6X4 | 6332E 6X4 | B1618 ONIBUS | B1621 ONIBUS | MERCEDES | 1518 | 1525 | 1620 | 1718 | 1725 | 1938S | 1944S | ATEGO1418 | ATEGO1718 | ATEGO1725 | ATEGO2425 | L1620 | L1622 | L2325 | L2635 | L2638 | LB2325 | LK2325 | LK2638 | LS1625 | LS1630 | LS1632 | LS1634 | LS1929 (FASE II) | LS1932 | LS1933 | LS1934 | LS1935 | LS1938 | LS1941 | LS2635 | LS2638 | O370 | O370 R | O370 RS | O370 RSD | O371 R | O371 RS | O371 RSD | O371 RSE | O371 RSL | O371 U | O371 UP | O400 | O400 RS | O400 RSD | O400 RSE | O400 RSL | O400 UP | O500 | O500 M | O500 R | O500 U | OF1218 |

WABCO: 9700519742

REP. SERVO EMBR.COMPL.1944/2638 =WABCO=(C

CLUTCH SERVO REPAIR KIT 1944/2638 WABCO

NTI: 007423

MERCEDES: 0002952818

NTI: 022695

SERVO EMBR. =LONGO=
CLUTCH SERVO (LONG)

MERCEDES | 1938S | 1944S | 2638B | 2638S | ATEGO1729 | ATEGO2429 | ATRON 2729 | AXOR1933 | AXOR2036 | AXOR2041 | AXOR2533 | AXOR2536 | AXOR2541 | AXOR2544 | AXOR2641 | AXOR2644 | AXOR2831 | AXOR3341 | AXOR3344 | AXOR4141 | AXOR4144 | O500 RSD |

WABCO: 9700518230 R

REP. SERVO EMBR/S JUNTA DA TAMPA (WABCO)

CLUTCH SERVO REP. KIT W/O COVER GASKET (WABCO)

NTI: 025662

SERVO EMBR. =MODELO WABCO=
SERVO EMBR. =MODELO WABCO=

VOLVO | FH12 | FH16 | FM12 | NH12

SERVOS

CLUTCH SERVO

WABCO: 9700516420 XA

REPARO SERVO MAN =C/TAMPA=

CLUTCH SERVO MAN W/COVER

NTI: 025434
NTI: 026034
WABCO: 9700519702 XA



SERVO EMBREAGEM MAN
CLUTCH SERVO MAN REP. KIT W/
COVER

DIVERSOS | MAN | 10.160 ADVANTECH MAN | 10.160PLUS DELIVERY | 13.190 ADVANTECH MAN | 13.190 WORKER EURO V | 15.190 ADVANTECH MAN | 15.190 OD EURO 5 MAN | 15.190 WORKER EURO V | 17.190 ADVANTCH MAN | 17.190 WORKER EURO V | 17.230 ADVANTECH MAN | 17.230 WORKER EURO V | 17.280 ADVANTECH MAN | 23.230 WORKER EURO V | 23.330 ADVANTECH MAN | 24.280 ADVANTECH MAN | 26.280 ADVANTECH MAN | 31.280 ADVANTECH MAN | 5.150 ADVANTECH MAN | 5.150 OD | 8.160 ADVANTECH MAN | 8.160 DELIVERY | 8.160 OD | 9.160 ADVANTECH MAN | 9.160 DELIVERY | 9.160 OD

WABCO: 9700516420 X

REPARO SERVO MAN =S/TAMPA=

CLUTCH SERVO REP. KIT W/O COVER FOR MAN

NTI: 025011
NTI: 026033
WABCO: 9700519702 X



SERVO EMBREAGEM MAN
CLUTCH SERVO MAN REP. KIT W/
COVER

MAN | 10.160 ADVANTECH MAN | 10.160PLUS DELIVERY | 13.190 ADVANTECH MAN | 13.190 WORKER EURO V | 15.190 ADVANTECH MAN | 15.190 OD EURO 5 MAN | 15.190 WORKER EURO V | 17.190 ADVANTCH MAN | 17.190 WORKER EURO V | 17.230 ADVANTECH MAN | 17.230 WORKER EURO V | 17.280 ADVANTECH MAN | 23.230 WORKER EURO V | 23.330 ADVANTECH MAN | 24.280 ADVANTECH MAN | 26.280 ADVANTECH MAN | 31.280 ADVANTECH MAN | 5.150 ADVANTECH MAN | 5.150 OD | 8.160 ADVANTECH MAN | 8.160 DELIVERY | 8.160 OD | 9.160 ADVANTECH MAN | 9.160 DELIVERY | 9.160 OD

WABCO: 8913505204

SANGRADOR SERVO EMBREAGEM =WABCO=

CLUTCH SERVO WABCO TYPE 110MM BLEED SCREW

NTI: 011006
NTI: 023010



SERVO EMBR. 110MM TIPO WABCO
CLUTCH SERVO 110M WABCO

FORD | 1722E 4X2 | 1730 | 1730 ARG. | 2422 | 2422E 6X2 | 2425 | 2428E 6X2 | 2622 | 2622E 6X4 | 2626 | 2628E 6X4 | 2630 | 2631 | 2632E 6X4 | 2831 | 2932E 6X4 | 3222 | 3224 | 4030 | 4031 | 4331 | 4432E 4X2 | 4532E/1832E | 5031 | 5032E 6X4 | 6332E 6X4 | B1618 ONIBUS | B1621 ONIBUS | MERCEDES | 1518 | 1525 | 1620 | 1718 | 1725 | 1938S | 1944S | ATEGO1418 | ATEGO1718 | ATEGO1725 | ATEGO2425 | L1620 | L1622 | L2325 | L2635 | L2638 | LB2325 | LK2325 | LK2638 | LS1625 | LS1630 | LS1632 | LS1634 | LS1929 (FASE II) | LS1932 | LS1933 | LS1934 | LS1935 | LS1938 | LS1941 | LS2635 | LS2638 | O370 | O370 R | O370 RS | O370 RSD | O371 R | O371 RS | O371 RSD | O371 RSE | O371 RSL | O371 U | O371 UP | O400 | O400 RS | O400 RSD | O400 RSE | O400 RSL | O400 UP | O500 | O500 M |

SERVOS

CLUTCH SERVO

WABCO: 4411005392

SENSOR SERVO EMBR. WABCO 1938/1944/2638/AXOR2036

SENSOR CLUTCH SERVO WABCO 1938

NTI: 018154



MERCEDES | 1938S | 1944S | 2638B | 2638S | ATEGO1729 | ATEGO2429 | ATRON 2729 |
 AXOR1933 | AXOR2036 | AXOR2041 | AXOR2533 | AXOR2536 | AXOR2541 | AXOR2544 |
 AXOR2641 | AXOR2644 | AXOR2831 | AXOR3341 | AXOR3344 | AXOR4141 | AXOR4144 |
 O500 RSD

SERVO EMBR. =LONGO=
 CLUTCH SERVO (LONG)

WABCO: 9700513554

SUPORTE EMBOLO SERVO EMBREAGEM

BRACKET PISTON CLUTCH SERVO

NTI: 018642



IVECO | NOVO STRALIS | MERCEDES | 1938S | 1944S | 2638S | ATEGO1729 | ATEGO2429 |
 ATRON 2729 | AXOR1933 | AXOR2036 | AXOR2533 | AXOR2831 | AXOR3341 | AXOR3344 |
 AXOR4141 | AXOR4144 | L2638 | LK2638 | LS1938 | LS2638 | O371 RS | O371 RSD | O371
 SRE | O400 | O400 RS | O400 RSD | O400 RSE | O400 RSL | O400 UP | O500 RSD | OH1625 L |
 OH1628 L | OH1635 L

SERVO EMBR. CARCACA LONGA TP
 WABCO
 CLUTCH SERVO LONG HOUSING
 WABCO

WABCO: 9700511000 T

TAMPA SERVO EMBR. CANECA LONGA =WABCO=

CLUTCH SERVO COVER LONG HOUSING WABCO

NTI: 018824

NTI: 022912

VW: 2Z0721261A T

WABCO: 9709020174 T



VW | 15.180EOD | 15.190EOD | 16.270CO | 17.210E OD | 17.240CO | 17.260CO

SERVO EMBR. CANECA LONGA =
 WABCO=
 CLUTCH SERVO LONG HOUSING
 WABCO

SERVOS

CLUTCH SERVO

WABCO: 9700510010

SERVO EMBR. MOD. ELETRONICO =ACTROS=

CLUTCH SERVO =ACTROS=

NTI: 019441
MERCEDES: 0002500562
NTI: 022551
WABCO: 9701500010



DIVERSOS | MERCEDES | ACTROS 2546 | ACTROS 2646 | ACTROS 2655 | ACTROS 4844

CILINDROS

CYLINDERS

KNORR: K043961

CIL. EMBR. C/ RESERV. =FORD=

CLUTCH CYLINDER W/ RESERVOIR -FORD-

NTI: 019620
 FORD: BC457A543AB
 NTI: 019621



FORD | 1317 4X2 | 1419 4X2 | 1517 4X2 | 1519 4X2 | 1717 4X2 | 1719 4X2 | 1722 4X2 | 1723 4X2 | 1729 4X2 | 1932 4X2 | 1933 4X2 | 2422 6X2 | 2423 6X2 | 2428 6X2 | 2429 6X2 | 2622 6X4 | 2623 6X4 | 2628 6X4 | 2629 6X4 | 2632 6X4 | 3132 6X4 | 3133 6X4

KNORR: K033411

CIL.ACION.EMBR.36MM.CONSTEL.HASTE LONGA

CLUTCH CYLINDER 36MM CONSTELLATION

NTI: 019631
 NTI: 022255
 VW: 2S2721261B



VW | 13.180E CONSTELLATION | 15.180E CONSTELLATION | 17.250E CONSTELLATION | 24.250ECONSTELLATION

KNORR: 0022951607

CIL.ACION.EMBR.ACCELO 712/715

CLUTCH CYLINDER ACCELO 712/715

NTI: 024356
 NTI: 024357



MERCEDES | 712 | ACCELO715C

CILINDROS
CYLINDERS
KNORR: K033409

CIL.ACION.EMBR.DIAM.36MM.COSTEL.HASTE CURTA

CLUTCH CYLINDER 36MM CONSTELLATION

 NTI: 018730
 NTI: 018861
 VW: 2T2721261 / 2T2721261C


VW | 17.320E CONSTELLATION | 19.320E CONSTELLATION | 19.370 CONSTELLATION | 24.320ECONSTELLATION | 25.320 CONSTELLATION | 25.370E CONSTELLATION | 26.260 CONSTELLATION | 31.260 CONSTELLATION | 31.320E CONSTELLATION | 31.370E CONSTELLATION

KNORR: 523670

CIL.ACION.FREIO MOTOR 111/2

ENGINE BRAKE CYLINDER 111/2

 NTI: 001730
 MERCEDES: A0004300126
 NTI: 003516 / 022585
 SCANIA: 204525 / 523669
 WABCO: 4214110180


SCANIA | 111 | F112 | K112 | LK140 | LK141 | R112 | R142 | T112 | T142

KNORR: K0112700061

REP. CIL. EMBREAGEM CONSTELLATION=34MM

CLUTCH CYLINDER REPAIR KIT

NTI: 018826



VW | 17-330 CONSTELLATION ADVANTECH | 17.320E CONSTELLATION | 19-330T CONSTELLATION ADVANTECH | 19-390T CONSTELLATION ADVANTECH | 19.320E CONSTELLATION | 19.370 CONSTELLATION | 24.320ECONSTELLATION | 25-390T CONSTELLATION ADVANTECH | 25.320 CONSTELLATION | 25.370E CONSTELLATION | 26-280 CONSTELATIOM ADVANTECH | 26-390T CONSTELLATION ADVANTECH | 26-420T CONSTELLATION ADVANTECH | 26.260 CONSTELLATION | 31-330 CONSTELLATION ADVANTECH | 31-390 CONSTELLATION ADVANTECH | 31.260 CONSTELLATION | 31.320E CONSTELLATION | 31.370E CONSTELLATION

 CIL.ACION.EMBR.DIAM.36MM.
 COSTEL.HASTE CURTA
 CLUTCH CYLINDER 36MM
 CONSTELLATION

CILINDROS

CYLINDERS

KNORR: K0112700062

REP. CIL. EMBREAGEM CONSTELLATION=36MM

CLUTCH CYLINDER REPAIR KIT

NTI: 018243
NTI: 021621

VW | 17-330 CONSTELLATION ADVANTECH | 17.320E CONSTELLATION | 19-330T
CONSTELLATION ADVANTECH | 19-390T CONSTELLATION ADVANTECH | 19.320E
CONSTELLATION | 19.370 CONSTELLATION | 24.320E CONSTELLATION | 25-390T
CONSTELLATION ADVANTECH | 25.320 CONSTELLATION | 25.370E CONSTELLATION |
26-280 CONSTELLATION ADVANTECH | 26-390T CONSTELLATION ADVANTECH | 26-420T
CONSTELLATION ADVANTECH | 26.260 CONSTELLATION | 31-330 CONSTELLATION
ADVANTECH | 31-390 CONSTELLATION ADVANTECH | 31.260 CONSTELLATION | 31.320E
CONSTELLATION | 31.370E CONSTELLATION

CIL. ACION. EMBR. DIAM. 36MM.
COSTEL. HASTE CURTA
CLUTCH CYLINDER 36MM
CONSTELLATION

SERVOS

CLUTCH SERVO

KNORR: 41035649

SERVO EMBR. N.STRALIS/N.TRAKKER 3 ROSCAS =KNORR

CLUTCH SERVO IVECO STRALIS KNORR

NTI: 017157
 IVECO: 41035502 / 41035647 / 5802192366 / 98420498 / 98438178
 KNORR: II36379 / VC3265
 NTI: 022563



IVECO | CURSOR | EUROCARGO | EUROTECH | EUROTRAKKER | NOVO STRALIS | NOVO TRAKKER | POWERSTAR | STRALIS | TRAKKER

KNORR: K002173

SERVO EMBR. STRALIS

CLUTCH SERVO FOR IVECO STRALIS

NTI: 023733
 KNORR: VG3286
 NTI: 023861



IVECO | CURSOR | EUROCARGO | EUROTECH | EUROTRAKKER | NOVO STRALIS | NOVO TRAKKER | POWERSTAR | STRALIS | TRAKKER

KNORR: 42568691

SERVO EMBREAGEM =STRALIS=

CLUTCH SERVO IVECO STRALIS

NTI: 024573
 DAF: 1813120 / 1815943 / 1897867 / 1917956 / 1938762
 IVECO: 42560762 / 42561466 / 42569800
 MAN: 2V5721021A / 81307166102 / 81307166109 / 81307166111 / 81307166115
 NTI: 024720 / 024880 / 027282



DIVERSOS | IVECO | NOVO STRALIS | NOVO TRAKKER | MAN | TGA | TGM



SERVOS

CLUTCH SERVO

KNORR: K036633

SERVO MID 83MM =ROSCA M12X1,5=

CLUTCH SERVO 83MM W/ THREAD M12X1,5

NTI: 018069
 NTI: 022559 / 024302
 VW: 2R2721257 / 2R2721257A



VW | 13-190 CONSTELLATION ADVENTECH | 13.180E CONSTELLATION | 15-190 CONSTELLATION ADVANTECH | 15.180E CONSTELLATION | 17-190 CONSTELLATION ADVANTECH | 17-330 CONSTELLATION ADVANTECH | 17.250E CONSTELLATION | 17.320E CONSTELLATION | 19-390T CONSTELLATION ADVANTECH | 19.320E CONSTELLATION | 19.370 CONSTELLATION | 24.250ECONSTELLATION | 24.320ECONSTELLATION | 25-390T CONSTELLATION ADVANTECH | 25.320 CONSTELLATION | 25.370E CONSTELLATION | 26-280 CONSTELATIOM ADVANTECH | 26-390T CONSTELLATION ADVANTECH | 26-420T CONSTELLATION ADVANTECH | 26.260 CONSTELLATION | 31-280 CONSTELLATION ADVANTECH | 31-330 CONSTELLATION ADVANTECH | 31-390 CONSTELLATION ADVANTECH | 31.260 CONSTELLATION | 31.320E CONSTELLATION | 31.370E CONSTELLATION

KNORR: SM1PLA

SERVO MID EUROCARGO/TECTOR =KNORR=

CLUTCH SERVO MID

NTI: 022595
 IVECO: 504060023 / 5801446199
 NTI: 024266



IVECO | CC118 E20 ONIBUS | CC118 E22 ONIBUS | CC170 E22 ONIBUS | EUROCARGO | TECTOR

KNORR: K004297 C

CIL. SERVO EMBR. STRALIS =KNORR=

CLUTCH SERVO HOUSING STRALIS KNORR

NTI: 016533



IVECO | CURSOR | EUROCARGO | EUROTECH | EUROTRAKKER | NOVO STRALIS | NOVO TRAKKER | POWERSTAR | STRALIS | TRAKKER

SERVO EMBR. N.STRALIS/N. TRAKKER 3 ROSCAS =KNORR
 CLUTCH SERVO IVECO STRALIS KNORR



SERVOS

CLUTCH SERVO

KNORR: K013727 P

REP. SERVO EMBR. AUTOM. C/BOBINA =PARCIAL=

CLUTCH SERVO PARTIAL REP.KIT FOR AUTOMATIC

NTI: 024643
NTI: 024644



IVECO | NOVO STRALIS | NOVO TRAKKER | MAN | TGA | TGM

SERVO EMBREAGEM =STRALIS=
CLUTCH SERVO IVECO STRALIS

KNORR: K013727

REP. SERVO EMBR. AUTOMATICO

CLUTCH SERVO REP. KIT FOR AUTOMATIC GEARBOX IVECO

NTI: 024551
NTI: 024552



IVECO | NOVO STRALIS | NOVO TRAKKER | MAN | TGA | TGM

SERVO EMBREAGEM =STRALIS=
CLUTCH SERVO IVECO STRALIS

KNORR: 42536490

REP. SERVO EMBR. C/BOBINA KNORR

CLUTCH SERVO REPAIR KIT WITH COIL KNORR TYPE

NTI: 024690
NTI: 024691



IVECO | NOVO STRALIS | NOVO TRAKKER

SERVO EMBREAGEM =STRALIS=
CLUTCH SERVO IVECO STRALIS



SERVOS

CLUTCH SERVO

KNORR: II35696008 AP

REP. SERVO EMBR. CARCACA ALUMINIO KNORR

REPAIR KIT CLUTCH SERVO ALUMINIUM HOUSING

NTI: 027211



IVECO | CURSOR | EUROCARGO | EUROTECH | EUROTRAKKER | NOVO STRALIS | NOVO TRAKKER | POWERSTAR | STRALIS | TRAKKER

SERVO EMBREAGEM STRALIS
CLUTCH SERVO IVECO STRALIS

KNORR: II35696008 A

REP. SERVO EMBR. CARCACA ALUMINIO KNORR

REPAIR KIT CLUTCH SERVO ALUMINIUM HOUSING

NTI: 015873

NTI: 023234



IVECO | CURSOR | EUROCARGO | EUROTECH | EUROTRAKKER | NOVO STRALIS | NOVO TRAKKER | POWERSTAR | STRALIS | TRAKKER

SERVO EMBREAGEM STRALIS
CLUTCH SERVO IVECO STRALIS

KNORR: II35696008 P

REP. SERVO EMBR. CARCACA FERRO KNORR

REPAIR KIT CLUTCH SERVO IRON HOUSING KNORR

NTI: 027210



IVECO | CURSOR | EUROCARGO | EUROTECH | EUROTRAKKER | NOVO STRALIS | NOVO TRAKKER | POWERSTAR | STRALIS | TRAKKER

SERVO EMBR. N.STRALIS/N.
TRAKKER 3 ROSCAS =KNORR
CLUTCH SERVO IVECO STRALIS
KNORR

SERVOS

CLUTCH SERVO

KNORR: I135696008

REP. SERVO EMBR. CARCACA FERRO KNORR

REPAIR KIT CLUTCH SERVO IRON HOUSING KNORR

NTI: 014716
IVECO: 503101555 / 93162181
NTI: 023210



IVECO | CURSOR | EUROCARGO | EUROTECH | EUROTRAKKER | NOVO STRALIS | NOVO TRAKKER | POWERSTAR | STRALIS | TRAKKER

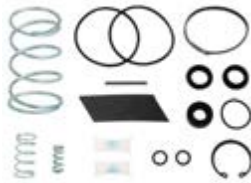
SERVO EMBR. TRAKKER/EUROTECH
2 ROSCAS =KNORR=
CLUTCH SERVO IVECO STRALIS
KNORR

KNORR: K0124040061

REP. SERVO EMBR. CONSTELLATION =COMPLETO=

CLUTCH SERVO REPAIR KIT CONSTELLATION

NTI: 012370
NTI: 012327
VW: 2R2798435A



VW | 13-190 CONSTELLATION ADVENTECH | 13.180E CONSTELLATION | 15-190 CONSTELLATION ADVANTECH | 15.180E CONSTELLATION | 17-190 CONSTELLATION ADVANTECH | 17-330 CONSTELLATION ADVANTECH | 17.250E CONSTELLATION | 17.320E CONSTELLATION | 19-390T CONSTELLATION ADVANTECH | 19.320E CONSTELLATION | 19.370 CONSTELLATION | 24.250ECONSTELLATION | 24.320ECONSTELLATION | 25-390T CONSTELLATION ADVANTECH | 25.320 CONSTELLATION | 25.370E CONSTELLATION | 26-280 CONSTELATIOM ADVANTECH | 26-390T CONSTELLATION ADVANTECH | 26-420T CONSTELLATION ADVANTECH | 26.260 CONSTELLATION | 31-280 CONSTELLATION ADVANTECH | 31-330 CONSTELLATION

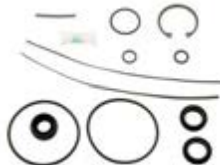
SERVO MID 83MM =ROSCA M12X1.5=
CLUTCH SERVO 83MM W/ THREAD
M12X1,5

KNORR: K0124040061 P

REP. SERVO EMBR. CONSTELLATION =PARCIAL=

REPAIR KIT CLUTCH SERVO VW

NTI: 016350
NTI: 022920
VW: 2R2798435 P



VW | 13-190 CONSTELLATION ADVENTECH | 13.180E CONSTELLATION | 15-190 CONSTELLATION ADVANTECH | 15.180E CONSTELLATION | 17-190 CONSTELLATION ADVANTECH | 17-330 CONSTELLATION ADVANTECH | 17.250E CONSTELLATION | 17.320E CONSTELLATION | 19-390T CONSTELLATION ADVANTECH | 19.320E CONSTELLATION | 19.370 CONSTELLATION | 24.250ECONSTELLATION | 24.320ECONSTELLATION | 25-390T CONSTELLATION ADVANTECH | 25.320 CONSTELLATION | 25.370E CONSTELLATION | 26-280 CONSTELATIOM ADVANTECH | 26-390T CONSTELLATION ADVANTECH | 26-420T CONSTELLATION ADVANTECH | 26.260 CONSTELLATION | 31-280 CONSTELLATION ADVANTECH | 31-330 CONSTELLATION

SERVO MID 83MM =ROSCA M12X1.5=
CLUTCH SERVO 83MM W/ THREAD
M12X1,5

SERVOS

CLUTCH SERVO

KNORR: K0124040062

REP. SERVO EMBR. CONSTELLATION C/PISTAO =KNORR=

CLUTCH SERVO REPAIR KIT CONSTELLATION

NTI: 021935
NTI: 022579



VW | 13-190 CONSTELLATION ADVENTECH | 13.180E CONSTELLATION | 15-190 CONSTELLATION ADVANTECH | 15.180E CONSTELLATION | 17-190 CONSTELLATION ADVANTECH | 17-330 CONSTELLATION ADVANTECH | 17.250E CONSTELLATION | 17.320E CONSTELLATION | 19-390T CONSTELLATION ADVANTECH | 19.320E CONSTELLATION | 19.370 CONSTELLATION | 24.250ECONSTELLATION | 24.320ECONSTELLATION | 25-390T CONSTELLATION ADVANTECH | 25.320 CONSTELLATION | 25.370E CONSTELLATION | 26-280 CONSTELATIOM ADVANTECH | 26-390T CONSTELLATION ADVANTECH | 26-420T CONSTELLATION ADVANTECH | 26.260 CONSTELLATION | 31-280 CONSTELLATION ADVANTECH | 31-330 CONSTELLATION

SERVO MID 83MM =ROSCA M12X1.5= CLUTCH SERVO 83MM W/ THREAD M12X1,5

KNORR: K015222 R

REP. SERVO EMBR. MID IVECO

REPAIR KIT CLUTCH SERVO MID IVECO

NTI: 017923
IVECO: 42556969
NTI: 023232



IVECO | EUROARGO | TECTOR

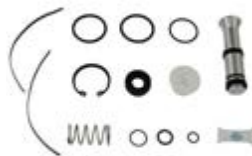
SERVO EMBR. MID CLUTCH SERVO MID

KNORR: SM1A05021

REP. SERVO EMBR. MID S/ GUIA PISTAO =IVECO=

REPAIR KIT CLUTCH SERVO W/O PISTON =IVECO=

NTI: 016407
NTI: 022913



IVECO | CC118 E20 ONIBUS | CC118 E22 ONIBUS | CC170 E22 ONIBUS | EUROARGO | TECTOR

SERVO MID EUROARGO/TECTOR = KNORR= CLUTCH SERVO MID

SERVOS

CLUTCH SERVO

KNORR: 0085860342

REP. SERVO FREIO 1113

REPAIR KIT BRAKE BOOSTER 1113

NTI: 012981
NTI: 023077



MERCEDES | L1113 | L1114 | L1118 | L1313 | L1316 | LA1113 | LA1313 | LAK1113 | LAK1313 | LK1113 | LK1313 | LK1316 | LS1113 | LS1313 | LS1316

SERVO FREIO 1113
CLUTCH SERVO MB 1113

KNORR: 983455860343

REP. SERVO FREIO 1113 (VENENO)

REPAIR KIT BRAKE BOOSTER 1113

NTI: 007433
NTI: 022964



MERCEDES | 1111 | 1113 | 1313

SERVO FREIO 1113
CLUTCH SERVO MB 1113

KNORR: 9481083004

REP. SERVO FREIO 608 COMP. -KNORR-

BRAKE BOOSTER REPAIR KIT 608 KNORR

NTI: 004135



MERCEDES | L608D | L608E | L708D | L708E

SERVO FREIO 608/708
CLUTCH SERVO MB 608/708



SERVOS

CLUTCH SERVO

KNORR: 9481083004 P

REP. SERVO FREIO 608 PARCIAL =KNORR=

BRAKE BOOSTER REPAIR KIT 608 (PARTIAL) KNORR

NTI: 009939



MERCEDES | L608D | L608E | L708D | L708E

SERVO FREIO 608/708
CLUTCH SERVO MB 608/708

KNORR: 42536490 R

REP.SERVO EMBR. AUTOM.

CLUTCH SERVO AUTOMATIC REP.KIT

NTI: 023058



IVECO | NOVO STRALIS | NOVO TRAKKER

SERVO EMBREAGEM =STRALIS=
CLUTCH SERVO IVECO STRALIS

KNORR: 75914710

RESERV. SERVO EMBR. MID

RESERVOIR CLUTCH SERVO MID

NTI: 019224

NTI: 022744



VW | 13-190 CONSTELLATION ADVANTECH | 13.180E CONSTELLATION | 15-190 CONSTELLATION ADVANTECH | 15.180E CONSTELLATION | 17-190 CONSTELLATION ADVANTECH | 17-330 CONSTELLATION ADVANTECH | 17.250E CONSTELLATION | 17.320E CONSTELLATION | 19-390T CONSTELLATION ADVANTECH | 19.320E CONSTELLATION | 19.370 CONSTELLATION | 24.250ECONSTELLATION | 24.320ECONSTELLATION | 25-390T CONSTELLATION ADVANTECH | 25.320 CONSTELLATION | 25.370E CONSTELLATION | 26-280 CONSTELATIOM ADVANTECH | 26-390T CONSTELLATION ADVANTECH | 26-420T CONSTELLATION ADVANTECH | 26.260 CONSTELLATION | 31-280 CONSTELLATION ADVANTECH | 31-330 CONSTELLATION

SERVO MID 83MM =ROSCA M12X1.5=
CLUTCH SERVO 83MM W/ THREAD M12X1,5



CILINDROS

CYLINDERS

VARGA: RCCE00181

CIL. AUX. EMBREAGEM

CYLINDER CLUTCH AUX.

NTI: 019223
NTI: 022775



FORD | CARGO 1113 | CARGO 1215 | CARGO 1218 | CARGO 1313 | CARGO 1415 | CARGO 1418 | CARGO 1615 | CARGO 1618 | CARGO 2217

VARGA: 2VB721405

CIL. MESTRE EMBREAGEM

CLUTCH MASTER CYLINDER

NTI: 013494
NTI: 023771



VW | 13.150 | 13.170 | 13.190 | 17.180 CUMMINS EURO 3 | 17.180 MWM EURO 3 | 17.210 | 17.220 | 17.220 CUMMINS EURO 3 | 17.220 MWM EURO 3 | 17.300 | 24.220 | 24.220 CUMMINS EURO 3 | 24.220 MWM EURO 3 | 24.250 | 26.300 | 40.300 | 7.100 | 7.110 | 7.120 | 8.120 | 8.120OD | 8.140CE | 8.140CO | 8.150 | 8.150 OD | 9.150OD

VARGA: TF3721405

CIL. MESTRE EMBREAGEM DIAM. 22,22MM

CLUTCH MASTER CYLINDER

NTI: 004560
AGRALE: 6007003050001
NTI: 021629 / 022625
VW: TAR721405 / TE3721405



VW | 12.140H | 12.140T | 12.170BT | 12.180 | 14.150 | 14.170BT | 14.180 | 14.200 | 14.220 | 15.180EOD | 15.190EOD | 16.170 | 16.180CO | 16.200 | 16.210 | 16.210CO | 16.220 | 16.220 LEITO | 16.300 | 17.210OD | 17.240OT | 17.260EOT | 18.310OT | 18.320EOT | 24.220 | 24.250 | 35.300 | 35.300 LEITO | 40.300 | 40.300 LEITO | 7.100 | 7.110S | 7.90S | 8.100 | 8.140 | 8.140CE | 8.140CKD | 8.140CO | 9.150OD | L.80

CILINDROS

CYLINDERS

BENDIX: 537194

CIL. EMBR. C/ RESERV. 112 =ALUMINIO=

CLUTCH CYLINDER ALUMINUM (W/ RESERVOIR)

NTI: 001887
BENDIX: 2258932 / 292962
NTI: 022608



SCANIA | R112 | R142 | T112 | T142

BENDIX: 537194 D

CIL. EMBR. C/ RESERV. 112 =FERRO=

CLUTCH CYLINDER IRON (W/ RESERVOIR)

NTI: 015165
NTI: 022846



SCANIA | R112 | R142 | T112 | T142

BENDIX: 537194 A

CIL. EMBR. S/ RESERV. 112 =ALUMINIO=

CLUTCH CYLINDER ALUMINUM (NO RESERVOIR)

NTI: 003513
NTI: 022848



SCANIA | R112 | R142 | T112 | T142

CILINDROS

CYLINDERS

BENDIX: 537194 F

CIL. EMBR. S/ RESERV. 112 =FERRO=

CLUTCH CYLINDER IROW W/ RESERVOIR

NTI: 015166
NTI: 022847



SCANIA | R112 | R142 | T112 | T142

BENDIX: 538919

REP. CIL. EMBR. 112 =TIPO BENDIX=

CLUTCH CYLINDER REPAIR KIT 112 BENDIX TYPE

NTI: 001921
NTI: 022708



SCANIA | R112 | R142 | T112 | T142

CIL. EMBR. C/ RESERV. 112 = FERRO=
CLUTCH CYLINDER IRON (W/ RESERVOIR)

DIVERSOS: 1345149

CANECA REDUZIDA 06 MARCHAS 94/114/24/64

REDUCTION GEAR HOUSING 890/900 94/114/24/64

NTI: 007993



DIVERSOS | SCANIA | 114 | 124 | 164 | 94 | P.G.R.

DIVERSOS: 284015

CANECA REDUZIDA 111/112

REDUCTION GEAR HOUSING 111/112

NTI: 001192



DIVERSOS | SCANIA | R112 | R113 | R142 | R143 | T112 | T113 | T142

DIVERSOS: 1526816 V

CANECA REDUZIDA NH/FH

REDUCTION GEAR HOUSING NH/FH

NTI: 007438

MERCEDES: 0002670519

NTI: 022670 / 022671 / 022672



DIVERSOS | VOLVO | EDC | FH12 | NH12 | NL10 | NL12

CILINDROS

CYLINDERS

DIVERSOS: 1321420

CANECA TRANSF. 06/08 MARCHAS 113/S4

TRANSFER GEAR HOUSING

NTI: 009744

SCANIA: 1484807 / 1484808



DIVERSOS | SCANIA | 114 | 124 | 164 | 94 | K113 | K114 | K124 | K94 | P.G.R. | P93 | R113 | R143 | T113

DIVERSOS

DIVERSOS: 1345151

CANECA TRANSF. 06/08 MARCHAS 113/S4

TRANSFER GEAR BOX HOUSING P93/113/143/S.4

NTI: 009066

SCANIA: 1326847 / 1484809



DIVERSOS | SCANIA | 114 | 124 | 164 | 94 | K113 | K114 | K124 | K94 | P.G.R. | P93 | R113 | R143 | T113

DIVERSOS: 1527363 V

CANECA TRANSF. N/NL10/12/EDC

TRANSFER GEAR BOX HOUSING N/NL10/12/EDC

NTI: 006051

IVECO: 7982230

NTI: 022787 / 022788 / 022789 / 022790

VOLVO: 1662959 V

ZF: 1295334075



DIVERSOS | VOLVO | EDC | FH12 | FM12 | NH12 | NL10 | NL12

DIVERSOS: 1656239 V

CANECA TRANSFERENCIA FH/NH

TRANSFER GEAR BOX HOUSING

NTI: 015102



DIVERSOS | VOLVO | B10B | B10R | B12 | B12B | B7R | B9R | FH12 | FH16 | FM12 | FM9 | N10 | NH12 | NL10 | NL12

DIVERSOS: 43234474

CANECA TRAS. CX. TRANSF. CX. CAMBIO

CANECA TRAS. CX. TRANSF. CX. CAMBIO

NTI: 026416

IVECO: 42534474 / 42557497



DIVERSOS | IVECO | EUROTECH | EUROTRAKKER | NOVO STRALIS | NOVO TRAKKER | STRALIS | TRAKKER

DIVERSOS: 2S2298109

CIL. ACION. FREIO MOTOR

ENGINE BRAKE CYLINDER

NTI: 017728



DIVERSOS | VW | 13.180E CONSTELLATION | 15.180E CONSTELLATION | 17.180 CUMMINS EURO 3 | 17.180 MWM EURO 3 | 17.220 | 17.220 CUMMINS EURO 3 | 17.220 MWM EURO 3 | 17.250E CONSTELLATION | 17.320E CONSTELLATION | 19.320E CONSTELLATION | 19.370 CONSTELLATION | 23.220 | 24.220 CUMMINS EURO 3 | 24.220 MWM EURO 3 | 24.250ECONSTELLATION | 24.320ECONSTELLATION | 25.320 CONSTELLATION | 25.370E CONSTELLATION | 26.220 | 26.260 CONSTELLATION | 31.260 CONSTELLATION | 31.320E CONSTELLATION | 31.370E CONSTELLATION

CILINDROS

CYLINDERS

DIVERSOS: 1400769

CIL. ACION. FREIO MOTOR - SERIE 4

ENGINE BRAKE CYLINDER S4

NTI: 005800
NTI: 026264 / 026829
SCANIA: 1376474



DIVERSOS | SCANIA | 114 | 124 | 94 | F94 | K114 | K124 | K94

DIVERSOS

DIVERSOS: 1507790

CIL. ACION. FREIO MOTOR - SERIE 5

ENGINE BRAKE CYLINDER S5

NTI: 018738
NTI: 026830
SCANIA: 1821737



DIVERSOS | SCANIA | 114 | 124 | K114 | K124 | P.G.R.

DIVERSOS: 1673553

CIL. ACION. FREIO MOTOR 113

ENGINE BRAKE CYLINDER 113

NTI: 003490
NTI: 026831
SCANIA: 1332503 / 1673552 / 1677877



DIVERSOS | SCANIA | F113 | K113 | L113 | P93 | R113 | R143 | T113

CILINDROS

CYLINDERS

DIVERSOS: TAF253861

CIL. ACION. FREIO MOTOR SIST. KNORR

ENGINE BRAKE CYLINDER KNORR

NTI: 005096



DIVERSOS | FORD | 1317E 4X2 | 1422 | 1517E 4X2 | 1622 | 1630 | 1717E 4X2 | 1722 | 1730 | 1730 ARG. | 1731 | 2322 | 2421 | 2422 | 2425 | 2622 | 2626 | 3224 | 3530 | 4030 | 4031 | 4331 | 814/815(96/...) | 815 | 815E | 815S | 915 | B1618 ONIBUS | B1621 ONIBUS | VW | 12.140H | 14.200 | 14.220 | 16.170 | 16.180CO | 16.200 | 16.210CO | 16.220 | 16.220 LEITO | 16.300 | 17.220 | 17.250E | 17.300 | 17.310 | 18.310 | 23.220 | 23.250E | 23.310 | 24.250 | 24.250E | 26.220 | 26.260 | 26.300 | 26.310 | 31.260 | 31.310 | 35.300 | 35.300H | 40.300 | 40.300 LEITO | 7.100 | 7.120 | 8.100 | 8.120 | 8.120OD | 8.140 | 8.150 | 8.150 EOD | 8.150 OD | 8.150E | 8.150E PLUS | 8.150EOD | 9.150E | 9.150E CUMMINS DELIVERY | 9.150EOD | 9.150OD

DIVERSOS

DIVERSOS: 2RP253861

CIL. ACION. FREIO MOTOR SIST. WABCO

ENGINE BRAKE CYLINDER WABCO

NTI: 005095

FORD: BG1X2W082AA

NTI: 021851

VW: 2TK253861



DIVERSOS | VW | 12.140H | 12.140T | 12.180 | 13.170E | 13.180E | 14.150 | 14.150 CHILE | 14.180 | 14.200 | 14.220 | 15.170E | 15.180E | 15.180EOD | 15.190E | 15.190EOD | 16.170 | 16.180CO | 16.200 | 16.220 | 16.220 LEITO | 16.300 | 17.210OD | 17.220 | 17.250E | 17.300 | 17.310 | 18.310 | 23.220 | 23.250E | 23.310 | 24.220 | 24.250 | 24.250E | 26.220 | 26.260 | 26.260E | 26.300 | 26.310 | 31.260 | 31.260E | 31.310 | 35.300 | 35.300 LEITO | 40.300 | 40.300 LEITO | 8.150 | 8.150E | 9.150E

DIVERSOS: 20528900 V

CIL. ACION. FREIO MOTOR SIST. WABCO

ENGINE BRAKE CYLINDER WABCO

NTI: 022635



DIVERSOS | VOLVO | VM 210 4X2 | VM 240 4X2 | VM 260 4X2

CILINDROS

CYLINDERS

DIVERSOS: 41211007 C

CIL. EMBR. C/ RESERV. E SENSOR STRALIS/TRAKKE/TECH

CLUTCH CYLINDER W/ RESERVOIR AND SENSOR

NTI: 018092
IVECO: 41285311 C



DIVERSOS | IVECO | NOVO STRALIS | NOVO TRAKKER | STRALIS | TRAKKER

DIVERSOS

DIVERSOS: 41211005

CIL. EMBR. C/ RESERV. EUROTECH/STRALIS

CLUTCH CYLINDER W/ RESERVOIR

NTI: 017550
IVECO: 41285355



DIVERSOS | IVECO | EUROARGO | EUROTECH | EUROTRAKKER

DIVERSOS: 5801317171

CIL. EMBR. C/SENSOR /TECTOR/EUROARGO

CLUTCH CYLINDER W/SENSOR AND RESERVOIR TECTOR

NTI: 024330
NTI: 023181 / 027000



DIVERSOS | IVECO | CURSOR | EUROARGO | NOVO STRALIS | NOVO TRAKKER | TECTOR

DIVERSOS: BC457A508BB

CIL. EMBR. FORD CARGO

CLUTCH CYLINDER FORD

NTI: 024838



DIVERSOS | FORD | 1317 4X2 | 1319 4X2 | 1419 4X2 | 1517 4X2 | 1519 4X2 | 1717 4X2 | 1719 4X2

DIVERSOS: 9792950006A

CIL. EMBR. MBB-915/1016

CLUTCH CYLINDER MBB 915/1016

NTI: 024835

MERCEDES: 9792950006



DIVERSOS | MERCEDES | 915 | ATEGO1016

DIVERSOS: 9792950106

CIL. EMBR. MBB-LO 815/LO 916

CLUTCH CYLINDER MBB-LO 815/LO 916

NTI: 024836



DIVERSOS | MERCEDES | L0815 | L0916

CILINDROS

CYLINDERS

DIVERSOS: 1355979

CIL. EMBR. S.4 =CX.GR801/GRS890/GRS900/920=

CLUTCH CYLINDER S4

NTI: 017961

SCANIA: 1532517 / 1545626 / 1754943



DIVERSOS | SCANIA | 114 | 124 | 164 | 94 | K114 | K124 | K94 | P.G.R.

DIVERSOS

DIVERSOS: 1756460

CIL. EMBR. S.4 M12X1,5MM (CX.EK630/640)

CLUTCH CYLINDER S4

NTI: 019610



DIVERSOS | SCANIA | 114 | 124 | 164 | 94 | K114 | K124 | K94 | P.G.R.

DIVERSOS: 20553368 V

CIL. EMBR. VOLVO VM

CLUTCH CYLINDER VOLVO VW

NTI: 024837



DIVERSOS | VOLVO | VM17 | VM23

DIVERSOS: 0022952507

CIL. EMBREAGEM ACCELO

CIL. EMBREAGEM ACCELO

NTI: 025928
 MERCEDES: A0022952507
 NTI: 026489 / 026490



DIVERSOS | MERCEDES | ACCELO1016 | ACCELO815 | ACCELO915C

DIVERSOS: 4854828

CIL. EMBREAGEM TECTOR/EUROCARGO

CLUTCH CYLINDER TECTOR/EUROCARGO

NTI: 025927
 NTI: 026488



DIVERSOS | IVECO | EUROCARGO | ONIBUS CC118E20 GNC | ONIBUS CC118E22 | ONIBUS CC170E22 | TECTOR

DIVERSOS: 81307156149

CIL. MASTER EMBR. C/AMPLIF. =MAN EGS=

CLUTCH MASTER CLY. W/ AMPLIFIER = MAN EGS=

NTI: 019618
 MANN: 81307156154 / 81307156156



DIVERSOS | MAN | TGA | TGX

CILINDROS

CYLINDERS

DIVERSOS: 1927829

CIL. MASTER EMBREAGEM P.G.R.T

CLUTCH MASTER CYLINDER P.G.R.T.

NTI: 018676
SCANIA: 1523400 / 1800442



DIVERSOS | SCANIA | PGR-OPTICRUISE C/PED

DIVERSOS

DIVERSOS: 0022950206

CIL. MESTRE EMBREAGEM =AXOR ROSCA M6X1 MM=

CLUTCH MASTER CYLINDER AXOR

NTI: 017551
NTI: 025709



DIVERSOS | MERCEDES | AXOR1835 LS | AXOR1840 LS | AXOR1843 LS | AXOR2335 LS | AXOR2540 LS | AXOR2543 LS

DIVERSOS: 0022959106

CIL. MESTRE EMBREAGEM =MBB= AXOR

CLUTCH MASTER CYLINDER AXOR

NTI: 017902
MERCEDES: 0012959106



DIVERSOS | MERCEDES | ATEGO1315 | ATEGO1418 | ATEGO1419 | ATEGO1518 | AXOR | L1620

DIVERSOS: 1358801 A

CIL. MESTRE EMBREAGEM 113 =ALUMINIO=

CLUTCH MASTER CYLINDER 113 ALUMINUM

NTI: 003096

SCANIA: 1105332 A / 1358800 A / 1361136 A



DIVERSOS | SCANIA | F113 | P93 | R113 | R143 | T113

DIVERSOS: 1358801

CIL. MESTRE EMBREAGEM 113 =FERRO=

CLUTCH MASTER CYLINDER 113 IRON

NTI: 007263

SCANIA: 1105332 / 1358800 / 1361136



DIVERSOS | SCANIA | F113 | P93 | R113 | R143 | T113

DIVERSOS: 3842957006

CIL. MESTRE EMBREAGEM 371/OH1419/1420

CLUTCH MASTER CYLINDER 371/OH1419/1420

NTI: 012516

NTI: 026095



DIVERSOS | MERCEDES | L1214 | L1418 | L1618 | L1620 | LK1618 | O371 | OH1419 | OH1420

CILINDROS

CYLINDERS

DIVERSOS: 0022950806

CIL. MESTRE EMBREAGEM ATEGO =MBB=

CLUTCH MASTER CYLINDER ATEGO

NTI: 017903



DIVERSOS | MERCEDES | ATEGO1315 | ATEGO1418 | ATEGO1419 | ATEGO1518 | ATEGO1718 | ATEGO1719 | ATEGO1723 | ATEGO1725 | ATEGO1726 | ATEGO1728 | ATEGO1729 | ATEGO2423 | ATEGO2425 | ATEGO2426 | ATEGO2428 | ATEGO2429 | AXOR1933 | AXOR2035 | AXOR2036 | AXOR2040 | AXOR2041 | AXOR2044 | AXOR2425 | AXOR2428 | AXOR2533 | AXOR2536 | AXOR2540 | AXOR2541 | AXOR2544 | AXOR2640 | AXOR2641 | AXOR2644 | AXOR2825 | AXOR2826 | AXOR2828 | AXOR2831 | AXOR3340 | AXOR3341 | AXOR3344 | AXOR4140 | AXOR4141 | AXOR4143 | AXOR4144

DIVERSOS

DIVERSOS: 20835246 V

CIL. MESTRE EMBREAGEM C/ RESERV. FH12/FH16

CLUTCH MASTER CYLINDER FH/D12D (W/ RESERVOIR)

NTI: 014970

VOLVO: 20553587 V



DIVERSOS | VOLVO | FH12 | FM12 | FM9 | NH12

DIVERSOS: 1628218 V

CIL. MESTRE EMBREAGEM FH /NH12/B12R

CLUTCH MASTER CYLINDER FH/NH/FM

NTI: 009624



DIVERSOS | VOLVO | B12M | B7R | FH12 | FM12 | FM7 | NH12

DIVERSOS: 3862957007

CIL. MESTRE EMBREAGEM L/LK/LS1621

CLUTCH MASTER CYLINDER L/LK/LS1621

NTI: 012524
NTI: 026379



DIVERSOS | MERCEDES | L1618 | L1620 | L1621

DIVERSOS: 3882957006

CIL. MESTRE EMBREAGEM L/LS/LK1929/35/41

CLUTCH MASTER CYLINDER L/LS/LK1929/35/41

NTI: 012525
NTI: 026392



DIVERSOS | MERCEDES | L1929 | L1935 | L1941 | LK1929 | LK1935 | LK1941 | LS1929 | LS1935 | LS1941

DIVERSOS: 0012955906

CIL. MESTRE EMBREAGEM L1929/35/38/41/LS1625/30/35

CLUTCH MASTER CYLINDER L1929/35/38/41/LS1625

NTI: 012523
NTI: 025422



DIVERSOS | MERCEDES | L1929 | L1935 | L1938 | L1941 | L709 | L812 | L912 | LK1929

CILINDROS

CYLINDERS

DIVERSOS: A3842950006

CIL. MESTRE EMBREAGEM MBB

CLUTCH MASTER CYLINDER MBB

NTI: 018810
MERCEDES: 3842950006



DIVERSOS | MERCEDES | O500 | O500 M | O500 R | O500 RS | O500 RSD | O500 U | OF1218 | OF1319 | OF1417 | OF1418 | OF1519 | OF1721 | OF1722 | OF1723 | OF1724 | OF1730 | OH1215 L | OH1518 | OH1519 | OH1521 | OH1526 | OH1621 L | OH1622 L | OH1623 L | OH1626 L

DIVERSOS

DIVERSOS: 1620462 V

CIL. MESTRE EMBREAGEM/NL10/12 B10M/12/58

CLUTCH MASTER CYLINDER N/NL10/12 B10M/12/58

NTI: 003515
VOLVO: 1669488 V / 8126730 V



DIVERSOS | VOLVO | B10M | B58 | N10 | N12 | NL10 | NL12

DIVERSOS: 81307156152

CIL.ACION.EMBR.MAN

CLUTCH ACTION CLY . MAN

NTI: 025297



DIVERSOS | MAN | TGA

DIVERSOS: 41285167

CIL.ACION.EMBR.N.TRACKER

CLUTCH CYLINDER W/ RESERVOIR

NTI: 024217
IVECO: 41285278



DIVERSOS | IVECO | NOVO TRAKKER

DIVERSOS: 2P0721405

CIL.ACION.EMBR.VW

CLUTCH CYLINDER VW

NTI: 025296



DIVERSOS | VW | 15.180E OD | 15.190E OD | 17.210E OD

DIVERSOS: 0000721512

CILINDRO ACIONAMENTO ACELERADOR MBB

ENGINE BRAKE CYLINDER

NTI: 009598
NTI: 026492



DIVERSOS | MERCEDES | L1513 | L1514 | L1516 | L1519 | L1614 | L1618 | L1620 | L1621 | LK1513 | LK1514 | LK1516 | LK1519 | LK1618 | LK1621 | LS1519 | LS1524 | LS1525

CILINDROS

CYLINDERS

DIVERSOS: A9452642127

CILINDRO COMANDO CX CAMBIO

GEARBOX CHANGING CYLINDER

NTI: 025273

MERCEDES: 9452642127



DIVERSOS | MERCEDES | AXOR TODOS C/CAMBIO G210/211/240/260/280

DIVERSOS

DIVERSOS: 446414

CILINDRO EMBREAGEM K112/3

CLUTCH CYLINDER K112/3

NTI: 003514



DIVERSOS | SCANIA | K112 | K113

DIVERSOS: 1521976 V

CILINDRO SPLIT CX.CAMBIO VT FH/FM/VM

CYLINDER HOUSING FOR GEAR BOX VT FH/FN/VN

NTI: 026322

VOLVO: 1521587 V



DIVERSOS | VOLVO | FH12 | FH16 | FM12 | FM9 | VM

DIVERSOS: 2S2253853A

FREIO MOTOR =60MM= CONSTELLATION

ENGINE BRAKE 60MM CONSTELLATION

NTI: 017731



DIVERSOS | VW | 13.180E CONSTELLATION | 15.180E CONSTELLATION

DIVERSOS: 2S2253853B

FREIO MOTOR =80MM= CONSTELLATION

ENGINE BRAKE 80MM CONSTELLATION

NTI: 013935

VW: 2T2253853



DIVERSOS | VW | 17.180 CUMMINS EURO 3 | 17.180 MWM EURO 3 | 17.220 | 17.220 CUMMINS EURO 3 | 17.220 MWM EURO 3 | 17.250E | 17.250E CONSTELLATION | 17.320E CONSTELLATION | 19.320E | 19.320E CONSTELLATION | 19.370 | 19.370 CONSTELLATION | 23.220 | 24.220 CUMMINS EURO 3 | 24.220 MWM EURO 3 | 24.250E | 24.250ECONSTELLATION | 24.320ECONSTELLATION | 25.320 | 25.320 CONSTELLATION | 25.370E | 25.370E CONSTELLATION | 26.220 | 26.260 | 26.260 CONSTELLATION | 31.260 | 31.260 CONSTELLATION | 31.320E | 31.320E CONSTELLATION | 31.370E | 31.370E CONSTELLATION

DIVERSOS: 21284852 V

FREIO MOTOR 85MM =3-3/8 VM17/23

ENGINE BRAKE 85MM

NTI: 018151

VOLVO: 20843686 V / 20843687 V



DIVERSOS | VOLVO | VM17 | VM23

CILINDROS

CYLINDERS

DIVERSOS: 1669422 V

TAMPA CILINDRO TRANSF. CAMBIO FH12

TRANSFER CYLINDER COVER, FOR GEARBOX FH12

NTI: 024281



DIVERSOS | VOLVO | FH12 | FL10 | FL7

DIVERSOS

DIVERSOS: 1340404

EIXO CANECA TRANSF. CX. CAMBIO S.4

GEARBOX HOUSING AXLE

NTI: 014256

SCANIA: 1332131



DIVERSOS | SCANIA | 114 | 124 | 164 | 94 | K113 | K124 | K94 | P.G.R. | P93 | R113 | R143 | T113

DIVERSOS: 1337894

EMBOLO CANECA REDUZIDA 113

REDUCED HOUSING PISTON

NTI: 017913



DIVERSOS | SCANIA | 114 | 124 | 164 | 94 | P.G.R. | R113 | R143 | T113

CANECA REDUZIDA 06 MARCHAS
94/114/24/64
REDUCTION GEAR HOUSING 890/900
94/114/24/64

CILINDROS

CYLINDERS

DIVERSOS

DIVERSOS: 2RP141147A

HASTE ACION. CIL. EMBREAGEM

ROD CLUTCH CYLINDER

NTI: 005056



DIVERSOS | VW | 12.140H | 12.140T | 12.170BT | 12.180 | 14.150 | 14.170BT | 14.180 | 14.200 | 14.220 | 15.180EOD | 15.190EOD | 16.170 | 16.180CO | 16.200 | 16.210 | 16.210CO | 16.220 | 16.220 LEITO | 16.300 | 17.210OD | 17.220 | 17.240OT | 17.260EOT | 17.300 | 17.310 | 18.310OT | 18.320EOT | 23.310 | 24.220 | 24.250 | 26.220 | 26.260 | 26.300 | 31.260 | 35.300 | 35.300 LEITO | 35.300H | 40.300 | 40.300 LEITO | 7.100 | 7.110S | 7.90S | 8.100 | 8.140 | 8.140CE | 8.140CKD | 8.140CO | 9.150OD | L.80

CIL. MESTRE EMBREAGEM DIAM. 22, 22MM
CLUTCH MASTER CYLINDER

DIVERSOS: 1523635

HASTE TUCHO TRAMB. CX. CAMBIO OPTICRUISE S.4

GEAR BOX ROD PPTICRUISE S.4

NTI: 010295

SCANIA: 1498124



DIVERSOS | SCANIA | 114 | 124 | 164 | 94 | K114 | K124 | K94 | P.G.R.

CILINDRO COMANDO CAMBIO
CILINDRO COMANDO CAMBIO

DIVERSOS: 244441 X

REP. CANECA CAMBIO 110/1/2/3

GEARBOX TRANSFER HOUSING REPAIR KIT 110/1/2/3

NTI: 000983

SCANIA: 1952214 X



DIVERSOS | SCANIA | 110 | 111 | LK140 | LK141 | R112 | R113 | R142 | R143 | T112 | T113 | T142

CANECA REDUZIDA 111/112
REDUCTION GEAR HOUSING 111/112

CILINDROS

CYLINDERS

DIVERSOS: 1952214

REP. CANECA CAMBIO 111/2/3

GEARBOX TRANSFER HOUSING REPAIR KIT 111/2/3

NTI: 003486



DIVERSOS | SCANIA | 110 | 111 | LK140 | LK141 | R112 | R113 | R142 | R143 | T112 | T113 | T142

CANECA REDUZIDA 111/112
REDUCTION GEAR HOUSING 111/112

DIVERSOS

DIVERSOS: 1345149 X

REP. CANECA REDUZ. 06 MARCHAS 113/S.4

REDUCTION GEAR HOUSING REPAIR KIT

NTI: 011231

SCANIA: 1334036 X / 1903798 X



DIVERSOS | SCANIA | 114 | 124 | 164 | 94 | K113 | K114 | K124 | K94 | P.G.R. | P93 | R113 | R143 | T113

CANECA REDUZIDA 06 MARCHAS
94/114/24/64
REDUCTION GEAR HOUSING 890/900
94/114/24/64

DIVERSOS: 1526817 VX

REP. CANECA REDUZ. CX. CAMBIO 16S 130/160/1650 ZF

REDUCTION GEAR HOUSING REPAIR KIT

NTI: 007721

VOLVO: 1527355 VX



DIVERSOS | VOLVO | EDC | FH | FH12 | NH12 | NL10 | NL12

CANECA REDUZIDA NH/FH
REDUCTION GEAR HOUSING NH/FH

CILINDROS

CYLINDERS

DIVERSOS

DIVERSOS: 3092575 V

REP. CANECA REDUZ. CX. CAMBIO FH12/16/FM

REDUCTION GEARBOX HOUSING REPAIR KIT FH

NTI: 017474



DIVERSOS | VOLVO | EDC | FH12 | FH16 | FM12 | NH12 | NL10 | NL12

CANECA REDUZIDA NH/FH
REDUCTION GEAR HOUSING NH/FH

DIVERSOS: 0069976447

REP. CANECA REDUZIDA MBB

REPAIR KIT FOR REDUCTION SPEED

NTI: 023186



DIVERSOS | MERCEDES | TODOS VEICULOS COM CAMBIO G210/G221/G240

CIL. REDUZIDA
SHIFT CYLINDER

DIVERSOS: 1321420 XV

REP. CANECA TRANSF. 06/08 MARCHAS 113/S.4 -VITON-

GEAR BOX TRANSFER HOUSING REPAIR KIT 113

NTI: 013647

SCANIA: 1320420 XV / 1326847 XV /
1345151 XV / 1484808 XV / 1484809 XV /
1903797 XV / 1953495 XV



DIVERSOS | SCANIA | 114 | 124 | 164 | 94 | K113 | K114 | K124 | K94 | P.G.R. | P93 | R113 |
R143 | T113

CANECA TRANSF. 06/08 MARCHAS
113/S4
TRANSFER GEAR HOUSING

CILINDROS

CYLINDERS

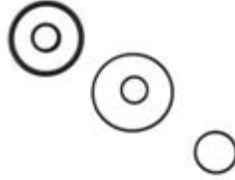
DIVERSOS: 1321420 X

REP. CANECA TRANSF. 06/08 MARCHAS 113/S4

GEARBOX TRANSFER HOUSING REPAIR KIT

NTI: 004241

SCANIA: 1320420 X / 1326847 X /
1345151 X / 1484808 X / 1484809 X /
1903797 X / 1953495 X



DIVERSOS | SCANIA | 114 | 124 | 164 | 94 | K113 | K114 | K124 | K94 | P.G.R. | P93 | R113 |
R143 | T113

CANECA TRANSF. 06/08 MARCHAS
113/S4
TRANSFER GEAR HOUSING

DIVERSOS

DIVERSOS: 1527463 VX

REP. CANECA TRANSF. CAMBIO 16S130/160/1650 ZF

GEARBOX TRANSFER REPAIR KIT

NTI: 007724

VOLVO: 1527363 VX



DIVERSOS | VOLVO | EDC | FH12 | FM12 | NH12 | NL10 | NL12

CANECA TRANSF. N/NL10/12/EDC
TRANSFER GEAR BOX HOUSING N/
NL10/12/EDC

DIVERSOS: 002670197

REP. CANECA TRANSF. CAMBIO MBB

GEARBOX REDUCTION HOUSING REPAIR KIT

NTI: 023183



DIVERSOS | MERCEDES | TODOS VEICULOS COM CAMBIO G210/G221/G240

CANECA TRANSFERENCIA
TRANSMISSION COVER

DIVERSOS: 0750112253

REP. CANECA TRANSF. CAMBIO ZF

GERA BOX TRANSFER HOUSING REPAIR KIT

NTI: 016387
NTI: 022849



DIVERSOS | IVECO | EUROTECH | EUROTRAKKER | NOVO STRALIS | NOVO TRAKKER | STRALIS | TRAKKER

DIVERSOS: 3093230 V

REP. CANECA TRANSF. CX. CAMBIO VT

GEARBOX TRANSFER HOUSING REPAIR KIT

NTI: 017478



DIVERSOS | VOLVO | B10B | B10R | B12 | B12B | B12M | B7R | B9R | F10 | F12 | FH | FH12 | FH12J | FH16 | FL10 | FL12 | FL6 | FL616 | FL619 | FL7 | FM | FM12 | FM9 | FS7 | N10 | NH12 | NL10 | NL10 AUS. | NL12 | NL12 AUS. | VM

CANECA TRANSFERENCIA FH/NH
TRANSFER GEAR BOX HOUSING

DIVERSOS: 0002670197

REP. CANECA TRANSF. MBB

GEARBOX HOUSING REPAIR KIT MBB

NTI: 023829



DIVERSOS | MERCEDES | TODOS VEICULOS COM CAMBIO G210/G221/G240

CANECA TRANSFERENCIA
TRANSMISSION COVER

CILINDROS

CYLINDERS

DIVERSOS: 1769778 R

REP. CANECA TRANSF. OPTICRUISE

GEAR BOX REPAIR KIT OPTICRUISE

NTI: 024230

SCANIA: 2090529 R / 2181643 R



DIVERSOS | SCANIA | F/K/N ONIBUS | P.G.R.

CILINDRO TRANSFERENCIA
OPTICRUISE
CILINDRO TRANSFERENCIA
OPTICRUISE

DIVERSOS

DIVERSOS: 1764085

REP. CIL. ACION. EMBREAGEM =ESCRAVO= 114

SLAVE CLUTCH CYLINDER REPAIR KIT

NTI: 010204



DIVERSOS | SCANIA | 114 | 124 | 164 | 94 | K114 | K124 | K94 | P.G.R.

CIL. EMBR. S.4 =CX.GR801/GRS890/
GRS900/920=
CLUTCH CYLINDER S4

DIVERSOS: 1764082

REP. CIL. ACION. EMBREAGEM S.4

CLUTCH ACTUATOR CYLINDER REPAIR KIT S.4

NTI: 014715



DIVERSOS | SCANIA | 114 | 124 | 164 | 94 | K114 | K124 | K94 | P.G.R.

CIL. EMBR. S.4 =CX.GR801/GRS890/
GRS900/920=
CLUTCH CYLINDER S4

CILINDROS

CYLINDERS

DIVERSOS

DIVERSOS: 41211007

REP. CIL. ACION. EMBREAGEM STRALIS/HD/NR

CLUTCH CYLINDER REPAIR KIT

NTI: 016426



DIVERSOS | IVECO | EUROCARGO | EUROTECH | EUROTRAKKER | NOVO STRALIS | NOVO TRAKKER | STRALIS | TRAKKER

CIL. EMBR. C/ RESERV. E SENSOR STRALIS/TRAKKE/TECH CLUTCH CYLINDER W/ RESERVOIR AND SENSOR

DIVERSOS: 1342106

REP. CIL. ACUMULADOR RETARDER

CYLINDER ACCUMULATOR W/ RETARDER REPAIR KIT

NTI: 016163

SCANIA: 550550



DIVERSOS | SCANIA | 114 | 124 | 164 | 94 | K114 | K124 | K94

ACUMULADOR OLEO S.4 OIL SEALMULATOR

DIVERSOS: 1433655

REP. CIL. BASCULAR CABINE S.4

CABIN CYLINDER REPAIR KIT

NTI: 012508

SCANIA: 1541982



DIVERSOS | SCANIA | 114 | 124 | 164 | 94 | P.G.R.

CILINDRO HIDR. BASCUL. CAB. CR (TETO ALTO) P.G.R.T CABIN TILT CYLINDER P.G.R.T

CILINDROS

CYLINDERS

DIVERSOS: 1369053

REP. CIL. BASCULAR CABINE S.4

CABIN CYLINDER REPAIR KIT

NTI: 013003



DIVERSOS | SCANIA | 114 | 124 | 164 | 94 | P.G.R.

CILINDRO HIDR. BASCUL. CAB. CR
(TETO ALTO) P.G.R.T
CABIN TILT CYLINDER P.G.R.T

DIVERSOS

DIVERSOS: 1881850

REP. CIL. CURSO LONGITUDINAL S.4

BRAKE CYLINDER REPAIR KIT S4

NTI: 020391



DIVERSOS | SCANIA | 114 | 124 | 164 | 94 | K114 | K124 | K94 | P.G.R.

CILINDRO COMANDO CAMBIO
CILINDRO COMANDO CAMBIO

DIVERSOS: 273660 V

REP. CIL. EMBREAGEM

CLUTCH CYLINDER REPAIR KIT

NTI: 002531



DIVERSOS | VOLVO | B10 | B10M | B58 | N10 | N12 | NL10 | NL12

CIL. MESTRE EMBREAGEM/NL10/12
B10M/12/58
CLUTCH MASTER CYLINDER N/
NL10/12 B10M/12/58

CILINDROS

CYLINDERS

DIVERSOS

DIVERSOS: 550464

REP. CIL. EMBREAGEM 112HW/113

CLUTCH CYLINDER REPAIR KIT 112HW/113

NTI: 003499
NTI: 003267



DIVERSOS | SCANIA | F113 | P93 | R113 | R143 | T113

CIL. MESTRE EMBREAGEM 113 =
ALUMINIO=
CLUTCH MASTER CYLINDER 113
ALUMINUM

DIVERSOS: 3094730 V

REP. CIL. EMBREAGEM FH12/NH/12

CLUTCH CYLINDER REPAIR KIT

NTI: 018964



DIVERSOS | VOLVO | B12M | B7R | FH12 | FM12 | FM7 | NH12

CIL. MESTRE EMBREAGEM FH /
NH12/B12R
CLUTCH MASTER CYLINDER FH/NH/
FM

DIVERSOS: 1927829 XA

REP. CIL. MASTER EMB. P.G.R.T (PISTAO ALUMINIO)

CLUTCH MASTER CYLINDER P.G.R.T.

NTI: 026205



DIVERSOS | SCANIA | PGR-OPTICRUISE C/PED

CIL. MASTER EMBREAGEM P.G.R.T
CLUTCH MASTER CYLINDER P.G.R.
T.

CILINDROS

CYLINDERS

DIVERSOS: 1927829 X

REP. CIL. MASTER EMBREAGEM P.G.R.T

CLUTCH MASTER CYLINDER P.G.R.T.

NTI: 019271



DIVERSOS | SCANIA | PGR-OPTICRUISE C/PED



CIL. MASTER EMBREAGEM P.G.R.T
CLUTCH MASTER CYLINDER P.G.R.
T.

DIVERSOS

DIVERSOS: 1405803 R

REPARO CILINDRO CAMBIO OPTCRUISE P.G.R.

GEAR BOX CYLINDER REP. KIT P.G.R.

NTI: 025839



DIVERSOS | SCANIA | F/K/N ONIBUS | P.G.R. | P.G.R.S.



CILINDRO CAMBIO OPTCRUISE P.G.
R.
GEAR BOX CYLINDER REP. KIT P.G.
R.

DIVERSOS: 26000

SENSOR C/2 PLUGS P/CIL. DIAM. 31,75 (IVECO)

FRONT CYLINDER REP. KIT W/ TWO CONNECTORS

NTI: 024435



DIVERSOS | IVECO | CURSOR | EUROCARGO | EUROTECH | EUROTRAKKER | NOVO STRALIS | NOVO TRAKKER | STRALIS | TRAKKER



CIL. EMBR. C/ RESERV. E SENSOR
STRALIS/TRAKKE/TECH
CLUTCH CYLINDER W/ RESERVOIR
AND SENSOR

CILINDROS

CYLINDERS

DIVERSOS: 1321239

TAMPA CANECA REDUZ. 8 MARC. 93/113/43/S.4

COVER REDUCTION GEAR BOX HOUSING 93/113/43/S

NTI: 009242



DIVERSOS | SCANIA | 114 | 124 | 164 | 94 | K113 | K114 | K124 | K94 | P.G.R. | P93 | R113 | R143 | T113

CANECA TRANSF. 06/08 MARCHAS
113/S4
TRANSFER GEAR HOUSING

DIVERSOS

SERVOS

CLUTCH SERVO

DIVERSOS: 1455730

CIL.ATUADOR CENTRAL EMBR. 94/114/24

CLUTCH RELEASE BEARING 94/114/24

NTI: 006044
SCANIA: 1393332 / 1434649 / 1522377 / 551572



DIVERSOS | SCANIA | 114 | 124 | 164 | 94 | F94 | K114 | K124 | K94

DIVERSOS

DIVERSOS: 0002902112 X

REP. SERVO EMBR.(GRAU)

CLUTCH SERVO REPAIR KIT

NTI: 015254



DIVERSOS | MERCEDES | OF1318 | OF1620 | OH1318 | OH1620 | UNIMOG U 1850 | UNIMOG U 1850L | UNIMOG U 2100 | UNIMOG U 2100T | UNIMOG U 2150 | UNIMOG U 2150L | UNIMOG U 2400 | UNIMOG U 2400TG | UNIMOG U 2450 | UNIMOG U 2450L

SERVO DE EMBREAGEM GRAU
SERVO DE EMBREAGEM GRAU

DIVERSOS: K628492AM I

SERVO EMBR. -HASTE CURTA- FH/FM/NH12/VT2014

CLUTCH SERVO FH/FM/NH12/VT2 (SHORT ROD)

NTI: 017175
VOLVO: 1672129 I / 20524584 VI / K628492AM I



DIVERSOS | VOLVO | FH12 | FH16 | FM12 | NH12 | VM 310 | VM 330

DIVERSOS: 8171721 VI

SERVO EMBR. =HASTE LONGA= NH/FM/FH12

CLUTCH SERVO NH/FN/FH12 (LONG ROD)

NTI: 017176

VOLVO: 20524585 VI / 22317371 VI / 3192126 VI



DIVERSOS | VOLVO | B12B | B12M | FH IMPORTADO | FH12 | FH16 | FM10 | FM12 | FM7 | FM9 | NH12

DIVERSOS: 360717

SERVO EMBR. 100MM 112

CLUTCH SERVO 100MM 112

NTI: 001611

SCANIA: 1747894



DIVERSOS | SCANIA | F112 | K112 | R112 | R142 | T112 | T142

DIVERSOS: 371612 I

SERVO EMBR. 110MM 112/3

CLUTCH SERVO 110M 112/3

NTI: 016126

SCANIA: 1331770 I / 1747895 I / 374116 I



DIVERSOS | SCANIA | F112 | F113 | K112 | K113 | L113 | P93 | R112 | R113 | R142 | R143 | T112 | T113 | T142

SERVOS

CLUTCH SERVO

DIVERSOS: 628277AM

SERVO EMBR. 80MM DAF/IVECO/RENAULT

CLUTCH SERVO DAF/IVECO/RENAULT

NTI: 026022
NTI: 026401



DAF | CF75 | DAF | CF75 | DIVERSOS

DIVERSOS

DIVERSOS: 5801784907

SERVO EMBR. 80MM VERTIS

CLUTCH SERVO 80MM VERTIS

NTI: 021653
IVECO: 5949890257
NTI: 021654



DIVERSOS | IVECO | 130V18 VERTIS CAMINHAO 4X2 | 130V19 VERTIS CAMINHAO ECOLINE 4X2 | 90V16 VERTIS CAMINHAO 4X2 | 90V18 VERTIS CAMINHAO 4X2

DIVERSOS: 1671953 VI

SERVO EMBR. B7R/B10R/B10M/EDC =INJETADO=

CLUTCH SERVO B7R/B10R/B10M/EDC 95MM

NTI: 016822
VOLVO: 1521371 VI / 1655435 VI / 1668501 VI / 85003219 VI



DIVERSOS | VOLVO | FH IMPORTADO | VM 270

DIVERSOS: 371612 B

SERVO EMBR. C/ COTOV. 45 - 110MM 112/3

CLUTCH SERVO 110MM (ELBOW 45°)

NTI: 016462

SCANIA: 1331770 B / 1747895 B / 374116 B



DIVERSOS | SCANIA | F112 | F113 | K112 | K113 | L113 | P93 | R112 | R113 | R142 | R143 | T112 | T113 | T142

DIVERSOS: 9700511640

SERVO EMBR. CARCACA LONGA TP WABCO

CLUTCH SERVO LONG HOUSING WABCO

NTI: 014576

MERCEDES: 0002951318



DIVERSOS | MERCEDES | L2638 | LK2638 | LS1938 | LS2638 | O371 RS | O371 RSD | O371 SRE | O400 | O400 RS | O400 RSD | O400 RSE | O400 RSL | O400 UP | OH1625 L | OH1628 L | OH1635 L

DIVERSOS: 629300AM

SERVO EMBR. DAF

CLUTCH SERVO DAF

NTI: 026021

NTI: 026708



DIVERSOS | RENAULT | KERAX | MAGNUM | MAXTER | PREMIUM

SERVOS

CLUTCH SERVO

DIVERSOS: 1069205 VI

SERVO EMBR. FH12 (P/VEIC. IMP.) =INJETADO=

CLUTCH SERVO FH 12

NTI: 016820



DIVERSOS | VOLVO | FH12 | FM10 | FM12 | NH12 | NL10 | NL12

DIVERSOS

DIVERSOS: 1421186 I

SERVO EMBR. INJETADO 114

CLUTCH SERVO 114

NTI: 018469

SCANIA: 1367453 I / 1454590 I / 1469161 I / 1513717 I



DIVERSOS | SCANIA | 114 | 124 | 164 | 94 | F94 | K114 | K124 | K94 | P.G.R.

DIVERSOS: 9700512270

SERVO EMBR. IVECO N. STRALIS 410/460 =HASTE CURTA=

CLUTCH SERVO IVECO STRALIS 410/460

NTI: 015449

IVECO: 5801591678

NTI: 017158

WABCO: 9700512310



DIVERSOS | IVECO | NOVO STRALIS

DIVERSOS: 6310361AM

SERVO EMBR. MAN TGA/DAF

CLUTCH SERVO MAN TGA/DAF

NTI: 026025
KONGSBERG: 630361AM

DIVERSOS | MAN | TGA

DIVERSOS: 1655639 V

SERVO EMBR. N/NL-10/12/B10/58 =80MM INTERNO=

CLUTCH SERVO N/NL10/12/B10/58 80MM

NTI: 003254
VOLVO: 1673067 V

DIVERSOS | VOLVO | B10M | B58E | N10 | N12 | NL10 | NL12

DIVERSOS: 1493461

SERVO EMBR. P.G.R.T

CLUTCH SERVO P.G.R.T.

NTI: 018855
NTI: 022561
SCANIA: 1523399 / 1784480 / 1927825 / 2555088

DIVERSOS | SCANIA | PGR-OPTICRUISE C/PED

SERVOS

CLUTCH SERVO

DIVERSOS: 9700512320

SERVO EMBR. TRAKKER -HASTE LONGA-

CLUTCH SERVO TRAKKER (SHORT ROD)

NTI: 017830
IVECO: 5801613805



DIVERSOS | IVECO | NOVO TRAKKER

DIVERSOS

DIVERSOS: 42568691

SERVO EMBREAGEM -STRALIS-

CLUTCH SERVO IVECO STRALIS

NTI: 024573
DAF: 1813120 / 1815943 / 1897867 / 1917956 / 1938762
IVECO: 42560762 / 42561466 / 42569800
MAN: 2V5721021A / 81307166102 / 81307166109 / 81307166111 / 81307166115
NTI: 024720 / 024880 / 027282



DIVERSOS | IVECO | NOVO STRALIS | NOVO TRAKKER | MAN | TGA | TGM

DIVERSOS: 85002040 V

SERVO EMBREAGEM FH/FM

CLUTCH SERVO DAF

NTI: 024760
NTI: 026024
VOLVO: 22085052 V / 22085058 V / 23105448 V / 23105541 V / 85008040 V



DIVERSOS | VOLVO | FH | FM

DIVERSOS: 9700516420

SERVO EMBREAGEM MAN

CLUTCH SERVO MAN REP. KIT W/COVER

NTI: 025059
NTI: 025060 / 025882



DIVERSOS | MAN | 10.160 ADVANTECH MAN | 10.160PLUS DELIVERY | 13.190 ADVANTECH MAN | 13.190 WORKER EURO V | 15.190 ADVANTECH MAN | 15.190 OD EURO 5 MAN | 15.190 WORKER EURO V | 17.190 ADVANTCH MAN | 17.190 WORKER EURO V | 17.230 ADVANTECH MAN | 17.230 WORKER EURO V | 17.280 ADVANTECH MAN | 23.230 WORKER EURO V | 23.330 ADVANTECH MAN | 24.280 ADVANTECH MAN | 26.280 ADVANTECH MAN | 31.280 ADVANTECH MAN | 5.150 ADVANTECH MAN | 5.150 OD | 8.160 ADVANTECH MAN | 8.160 DELIVERY | 8.160 OD | 9.160 ADVANTECH MAN | 9.160 DELIVERY | 9.160 OD

DIVERSOS: 2T2721261E

SERVO EMBREAGEM MAN

CLUTCH SERVO MAN

NTI: 027234
NTI: 027238



DIVERSOS | MAN | 13.190 WORKER EURO V | 15.190 WORKER EURO V | 17.190 WORKER EURO V | 17.230 WORKER EURO V | 17.330 ADVANTECH | 19.330T ADVANTECH | 23.230 WORKER EURO V | 24.330 ADVANTECH | 25.330T ADVANTECH | 26.330T ADVANTECH | 26.360T ADVANTECH | 26.390T ADVANTECH | 26.420T ADVANTECH | 31.330 ADVANTECH | 31.390 ADVANTECH

DIVERSOS: 5801317166

SERVO MID EMBREAGEM TECTOR (6X2)

CLUTCH SERVO MID TECTOR (6X2)

NTI: 023897
IVECO: 504143812 / 5801574722



DIVERSOS | IVECO | EURO CARGO | TECTOR

SERVOS

CLUTCH SERVO

DIVERSOS: 1316051835 C

CORPO PNEUM. SERVO SHIFT

CLUTCH SERVO SHIFT PNEUMATIC HOUSING

NTI: 024238
NTI: 024295 / 024296



DIVERSOS | IVECO | EUROTECH | EUROTRAKKER | NOVO STRALIS | STRALIS | TRAKKER | VW | 19.320E CONSTELLATION | 19.370 CONSTELLATION | 25.320 CONSTELLATION | 25.370E CONSTELLATION | 26.260 CONSTELLATION | 31.260 CONSTELLATION | 31.320E CONSTELLATION | 31.370E CONSTELLATION

SERVO SHIFT ZF
CLUTCH SERVO SHIFT ZF TYPE

DIVERSOS

DIVERSOS: 23016

FLUIDO DE FREIO (DOT4) =500ML=

BRAKE FLUID (DOT4) =500ML=

NTI: 009999



DIVERSOS | FREIOS | TODOS OS VEICULOS

DIVERSOS: 389894

HASTE SERVO EMBREAGEM 112HW/113

ROD CLUTCH SERVO 112HW/113

NTI: 002989



DIVERSOS | SCANIA | 112 HW | F112 | F113 | K112 | K113 | L113 | P93 | R112 | R113 | R142 | R143 | T112 | T113 | T142

SERVO EMBR. 110MM 112/3
CLUTCH SERVO 110M 112/3

DIVERSOS: 23814

HASTE SERVO SHIFT (MAIOR)

HASTE SERVO SHIFT (MAIOR)

NTI: 023814



DIVERSOS | IVECO | EUROTECH | EUROTRAKKER | NOVO STRALIS | STRALIS | TRAKKER | MERCEDES | ATEGO1729HD | ATEGO1730S | ATEGO2426 | ATEGO2430 | ATEGO3030 | VW | 10.160 DELIVERY | 17.280 | 19.320E CONSTELLATION | 19.370 CONSTELLATION | 24.280 | 25.320 CONSTELLATION | 25.370E CONSTELLATION | 26.260 CONSTELLATION | 31.260 CONSTELLATION | 31.320E CONSTELLATION | 31.370E CONSTELLATION

SERVO SHIFT ZF
CLUTCH SERVO SHIFT ZF TYPE

DIVERSOS: 24872

HASTE SERVO SHIFT (MENOR)

HASTE SERVO SHIFT (MENOR)

NTI: 024872



DIVERSOS | IVECO | STRALIS | MAN | TGX | RENAULT | PREMIUM | VW | 17.280 | 19.330 | 19.370 | 24.280 | 25.370 | 31.330 | 31.370E

SERVO SHIFT ZF
CLUTCH SERVO SHIFT ZF TYPE

DIVERSOS: 22809232 VR

REP. ATUADOR EMB. I-SHIFT PARCIAL (S/TRAVA)

CLUTCH PARTIAL REP.KIT ACTUATOR I-SHIFT W/O LOCKER

NTI: 026334



DIVERSOS | VOLVO | FH12 | FH13 | FM13

SERVOS

CLUTCH SERVO

DIVERSOS: 550456

REP. PARCIAL SERVO EMBR. 110MM

CLUTCH SERVO REPAIR KIT 110MM (PARTIAL)

NTI: 001957



DIVERSOS | SCANIA | 112 HW | F112 | F113 | K112 | K113 | L113 | P93 | R112 | R113 | R142 | R143 | T112 | T113 | T142

SERVO EMBR. 110MM 112/3
CLUTCH SERVO 110M 112/3

DIVERSOS

DIVERSOS: 2023059 X

REP. SERVO ECA

CLUTHC SERVO REP. KIT ECA

NTI: 025066

SCANIA: 2392193 X / 2612292 X



DIVERSOS | SCANIA | F/K/N ONIBUS | P.G.R. | P.G.R.S.

SERVO EMBREAGEM ECA
SERVO EMBREAGEM ECA

DIVERSOS: 550465

REP. SERVO EMBR. 110 MM =RABICO COMPL.=

CLUTCH SERVO REPAIR KIT 110MM

NTI: 006544

SCANIA: 1336159



DIVERSOS | SCANIA | F112 | F113 | K112 | K113 | L113 | P93 | R112 | R113 | R142 | R143 | T112 | T113 | T142

SERVO EMBR. 110MM 112/3
CLUTCH SERVO 110M 112/3

SERVOS

CLUTCH SERVO

DIVERSOS

DIVERSOS: 550465 A

REP. SERVO EMBR. 110 MM =RABICO COMPL.= C/PISTAO

CLUTCH SERVO REPAIR KIT 110MM

NTI: 024507
SCANIA: 1336159 A



DIVERSOS | SCANIA | F112 | F113 | K112 | K113 | L113 | P93 | R112 | R113 | R142 | R143 | T112 | T113 | T142

SERVO EMBR. 110MM 112/3
CLUTCH SERVO 110M 112/3

DIVERSOS: 550465 P

REP. SERVO EMBR. 110 MM =RABICO PARCIAL=

CLUTCH SERVO REPAIR KIT 110MM (PARTIAL)

NTI: 016634



DIVERSOS | SCANIA | F112 | F113 | K112 | K113 | L113 | P93 | R112 | R113 | R142 | R143 | T112 | T113 | T142

SERVO EMBR. 110MM 112/3
CLUTCH SERVO 110M 112/3

DIVERSOS: 1484715

REP. SERVO EMBR. C/PISTAO =MOD.= 114/24

CLUTCH SERVO REPAIR KIT (W/ PISTON) 114/24

NTI: 006282



DIVERSOS | SCANIA | 114 | 124 | 164 | 94 | F94 | K114 | K124 | K94 | P.G.R.

SERVO EMBR. INJETADO 114
CLUTCH SERVO 114

SERVOS

CLUTCH SERVO

DIVERSOS: 1484715 E

REP. SERVO EMBR. C/PISTAO =MOD.= 114/24 ESPECIAL

CLUTCH SERVO REPAIR KIT 114/24

NTI: 017278



DIVERSOS | SCANIA | 114 | 124 | 164 | 94 | F94 | K114 | K124 | K94 | P.G.R.

SERVO EMBR. INJETADO 114
CLUTCH SERVO 114

DIVERSOS

DIVERSOS: 1484715 X

REP. SERVO EMBR. C/PISTAO =MOD.= 114/24 EXPORT

CLUTCH SERVO REPAIR KIT W/ PISTON (PARTIAL)

NTI: 018975



DIVERSOS | SCANIA | 114 | 124 | 164 | 94 | F94 | K114 | K124 | K94 | P.G.R.

SERVO EMBR. INJETADO 114
CLUTCH SERVO 114

DIVERSOS: 1484715 P

REP. SERVO EMBR. C/PISTAO =MOD.= 114/24 PARCIAL

CLUTCH SERVO REPAIR KIT W/ PISTON (PARTIAL)

NTI: 016635



DIVERSOS | SCANIA | 114 | 124 | 164 | 94 | F94 | K114 | K124 | K94 | P.G.R.

SERVO EMBR. INJETADO 114
CLUTCH SERVO 114

SERVOS

CLUTCH SERVO

DIVERSOS: 1523399 R

REP. SERVO EMBR. DIAM. 125MM =CAMBIO OPTICRUISE=

CLUTCH SERVO REPAIR KIT 125MM OPTCRUISE GEARSHIFT

NTI: 018168
 SCANIA: 1784480 R / 1927825 R /
 2555088 R



SERVO EMBR. P.G.R.T
 CLUTCH SERVO P.G.R.T.

DIVERSOS | SCANIA | PGR-OPTICRUISE C/PED

DIVERSOS

DIVERSOS: 3094550 V

REP. SERVO EMBR. EDC/FH-12

CLUTCH SERVO REPAIR KIT EDC/FH-12

NTI: 006048
 VOLVO: 3093099 V / 3093100 V



SERVO EMBR. FH12 (P/VEIC. IMP.) =
 INJETADO=
 CLUTCH SERVO FH 12

DIVERSOS | VOLVO | FH12 | FM10 | FM12 | NH12 | NL10 | NL12

DIVERSOS: 550453

REP. SERVO EMBR.100MM

CLUTCH SERVO REPAIR KIT 100 MM

NTI: 001955
 NTI: 001953



SERVO EMBR. 100MM 112
 CLUTCH SERVO 100MM 112

DIVERSOS | SCANIA | F112 | K112 | R112 | R142 | T112 | T142

SERVOS

CLUTCH SERVO

DIVERSOS: 550455

REP. SERVO EMBR.110MM

CLUTCH SERVO REPAIR KIT 110 MM

NTI: 001956



DIVERSOS | SCANIA | F112 | F113 | K112 | K113 | L113 | P93 | R112 | R113 | R142 | R143 | T112 | T113 | T142

SERVO EMBR. 110MM 112/3
CLUTCH SERVO 110M 112/3

DIVERSOS

DIVERSOS: 3093098 V

REP. SERVO EMBR.FH/NH/FM

CLUTCH SERVO REPAIR KIT FH/NH/FM

NTI: 014669



DIVERSOS | VOLVO | FH12 | FM10 | FM12 | NH12 | NL10 | NL12

SERVO EMBR. FH12 (P/VEIC. IMP.) =
INJETADO=
CLUTCH SERVO FH 12

DIVERSOS: 85102142 V

REP. SERVO EMBR.FH12

CLUTCH SERVO REPAIR KIT FH12

NTI: 009877



DIVERSOS | VOLVO | FH12 | FH16 | FM12 | NH12 | VM 310 | VM 330

SERVO EMBR. =HASTE CURTA= FH/
FM/NH12/VT2014
CLUTCH SERVO FH/FM/NH12/VT2
(SHORT ROD)

DIVERSOS: 85102142 VA

REP. SERVO EMBR.FH12 C/PISTAO

CLUTCH SERVO REPAIR KIT FH12 (W/ PISTON)

NTI: 012772



DIVERSOS | VOLVO | FH12 | FH16 | FM12 | NH12 | VM 310 | VM 330

SERVO EMBR. =HASTE CURTA= FH/
FM/NH12/VT2014
CLUTCH SERVO FH/FM/NH12/VT2
(SHORT ROD)

DIVERSOS: 85102142 VP

REP. SERVO EMBR.FH12 PARCIAL

CLUTCH SERVO REPAIR KIT (PARTIAL)

NTI: 016633



DIVERSOS | VOLVO | FH12 | FH16 | FM12 | NH12 | VM 310 | VM 330

SERVO EMBR. =HASTE CURTA= FH/
FM/NH12/VT2014
CLUTCH SERVO FH/FM/NH12/VT2
(SHORT ROD)

DIVERSOS: 950321027

REP. SERVO EMBR.HALDEX

CLUTCH SERVO REPAIR KIT HALDEX

NTI: 017482



DIVERSOS | MERCEDES | 1214C | 1218 | 1317 | 1318 | 1414 | 1517 | 1518 | 1614 | 1618 |
1714 | 1718 | 1933 | 2318 | 2418 | 708 | 812 | 912 | 917

SERVO EMBREAGEM
CLUTCH SERVO

SERVOS

CLUTCH SERVO

DIVERSOS: 950321029

REP. SERVO EMBR.HALDEX

CLUTCH SERVO REPAIR KIT HALDEX

NTI: 017495



DIVERSOS | MERCEDES | ATEGO

SERVO EMBREAGEM
CLUTCH SERVO

DIVERSOS

DIVERSOS: 6025003031003 R

REP. SERVO EMBR.KONSBERG AGRALE

CLUTCH SERVO REPAIR KIT KONGSBERG

NTI: 018680



AGRALE | 10.000 4.8H MWM EURO V COM ABS | 14000 | 6500 | 8700 | 8700TR | MA 10.0 BL MWM 4,8H EURO V | MA 9.2 BL MWM 4,8H EURO V | DIVERSOS | IVECO | 130V18 VERTIS CAMINHAO 4X2 | 130V19 VERTIS CAMINHAO ECOLINE 4X2 | 90V16 VERTIS CAMINHAO 4X2 | 90V18 VERTIS CAMINHAO 4X2 | VERTIS

DIVERSOS: 271194 V

REP. SERVO EMBR.NL10/NL12

CLUTCH SERVO REPAIR KIT N10

NTI: 003517



DIVERSOS | VOLVO | B10M | B58E | N10 | N12 | NL10 | NL12

SERVO EMBR. N/NL-10/12/B10/58 -
80MM INTERNO=
CLUTCH SERVO N/NL10/12/B10/58
80MM

DIVERSOS: 5949890257 R

REP. SERVO EMBR.VERTIS

CLUTCH SERVO REPAIR KIT VERTIS

NTI: 017979



DIVERSOS | IVECO | VERTIS

SERVO EMBR. 80MM VERTIS
CLUTCH SERVO 80MM VERTIS

DIVERSOS: 0501217253 X

REP. SERVO SHIFT MERCEDES (COMPTO)

CLUTCH SERVO REP. KIT MERCEDES COMPLETE

NTI: 024785



DIVERSOS | MAN | 10.160PLUS DELIVERY | 17.280 | 24.280 | MERCEDES | ATEGO1729HD | ATEGO1730S | ATEGO2426 | ATEGO2430 | ATEGO3030

SERVO SHIFT ZF
CLUTCH SERVO SHIFT ZF TYPE

DIVERSOS: 0501216319 X

REP.SERVO SHIFT 0-500 MBB

SERVO REP. KIT SHIFT MBB 0-500

NTI: 025015



DIVERSOS | MERCEDES | ATEGO1730S | ATEGO2430 | 0500 TODOS | VW | 17.280

SERVO SHIFT ZF
CLUTCH SERVO SHIFT ZF TYPE

SERVOS

CLUTCH SERVO

DIVERSOS: 9700516420 XA

REPARO SERVO MAN =C/TAMPA=

CLUTCH SERVO MAN W/COVER

NTI: 025434
NTI: 026034
WABCO: 9700519702 XA



SERVO EMBREAGEM MAN
CLUTCH SERVO MAN REP. KIT W/
COVER

DIVERSOS | MAN | 10.160 ADVANTECH MAN | 10.160PLUS DELIVERY | 13.190 ADVANTECH MAN | 13.190 WORKER EURO V | 15.190 ADVANTECH MAN | 15.190 OD EURO 5 MAN | 15.190 WORKER EURO V | 17.190 ADVANTCH MAN | 17.190 WORKER EURO V | 17.230 ADVANTECH MAN | 17.230 WORKER EURO V | 17.280 ADVANTECH MAN | 23.230 WORKER EURO V | 23.330 ADVANTECH MAN | 24.280 ADVANTECH MAN | 26.280 ADVANTECH MAN | 31.280 ADVANTECH MAN | 5.150 ADVANTECH MAN | 5.150 OD | 8.160 ADVANTECH MAN | 8.160 DELIVERY | 8.160 OD | 9.160 ADVANTECH MAN | 9.160 DELIVERY | 9.160 OD

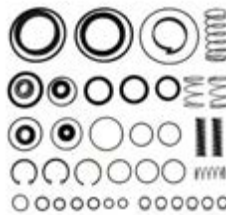
DIVERSOS

DIVERSOS: 0501211805

REPARO SERVO SHIFT COMPLETO

CLUTCH SERVO SHIFT REPAIR KIT

NTI: 024189



SERVO SHIFT ZF
CLUTCH SERVO SHIFT ZF TYPE

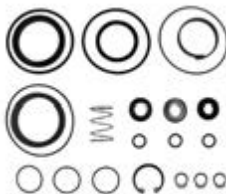
DIVERSOS | IVECO | EUROTECH | EUROTRAKKER | NOVO STRALIS | NOVO TRAKKER | STRALIS | TRAKKER | VW | 19.320E CONSTELLATION | 19.370 CONSTELLATION | 25.320 CONSTELLATION | 25.370E CONSTELLATION | 26.260 CONSTELLATION | 31.260 CONSTELLATION | 31.320E CONSTELLATION | 31.370E CONSTELLATION

DIVERSOS: 0501211805 P

REPARO SERVO SHIFT PARCIAL

CLUTCH SERVO SHIFT PARTIAL R. KIT

NTI: 024479



SERVO SHIFT ZF
CLUTCH SERVO SHIFT ZF TYPE

DIVERSOS | IVECO | EUROTECH | EUROTRAKKER | NOVO STRALIS | STRALIS | TRAKKER | VW | 19.320E CONSTELLATION | 19.370 CONSTELLATION | 25.320 CONSTELLATION | 25.370E CONSTELLATION | 26.260 CONSTELLATION | 31.260 CONSTELLATION | 31.320E CONSTELLATION | 31.370E CONSTELLATION

DIVERSOS: 9700510010

SERVO EMBR. MOD. ELETRONICO =ACTROS=

CLUTCH SERVO =ACTROS=

NTI: 019441
MERCEDES: 0002500562
NTI: 022551
WABCO: 9701500010



DIVERSOS | MERCEDES | ACTROS 2546 | ACTROS 2646 | ACTROS 2655 | ACTROS 4844

CONTATOS / CONTACTS



Vendas / Sales: vendas@ntifreios.com.br
Geral / General: cipec@cipec.com.br
Televendas / Telesales: +55 19 3834.9822
Fax Gratuito / Fax Free: 0800.707.9822
www.ntifreios.com.br



Televendas: +55 19 3834.9822



+55 54 3211.1800



+55 11 2626.8839

www.ntifreios.com.br



PRIMARY INDEX CODE - WABCO

24872	13
4411005392	20
8845029614	12
8913505204	19
8977541814	11
8995061502	13
9650019022	4
9700510010	21
9700510010 C	10
9700510010 CN	14
9700510010 P	15
9700510134	8
9700510174	10
9700510494	14
9700511000	6
9700511000 C	9
9700511000 T	20
9700511200	5
9700511202	15
9700511280 A	5
9700511514	11
9700511630	7
9700511900	7
9700512170	6
9700512270	6
9700512270 C	11
9700512282	15
9700513554	20
9700514310	5
9700515994	8
9700516420	7
9700516420 X	19
9700516420 XA	19
9700517332	12
9700518230 R	18
9700519062 PG	17
9700519172	16
9700519542	18
9700519562	17
9700519562 P	14
9700519742	18
9700519742 P	16
9700519742 PG	16
9700519952	17
9701509232 JB	13
9709016312	12
9709020124	9
9709020274	10
9709030104	9
2RD253853B	3
2T2721261E	8
2TA253861	3
TAR253853	4
TMG253853	4
TN4253861	3



PRIMARY INDEX CODE - KNORR



0022951607	22
0085860342	31
523670	23
41035649	25
42536490	27
42536490 R	32
42568691	25
75914710	32
9481083004	31
9481083004 P	32
983455860343	31
II35696008	29
II35696008 A	28
II35696008 AP	28
II35696008 P	28
K002173	25
K004297 C	26
K0112700061	23
K0112700062	24
K0124040061	29
K0124040061 P	29
K0124040062	30
K013727	27
K013727 P	27
K015222 R	30
K033409	23
K033411	22
K036633	26
K043961	22
SM1A05021	30
SM1PLA	26





PRIMARY INDEX CODE - VARGA

2VB721405	33
RCCE00181	33
TF3721405	33



PRIMARY INDEX CODE - BENDIX



537194	34
537194 A	34
537194 D	34
537194 F	35
538919	35





PRIMARY INDEX CODE - OTHER PRODUCTS

0000721512	50	1655639 V	70	BC457A508BB	42
0002670197	58	1656239 V	38	K628492AM I	65
002670197	57	1669422 V	53	TAF253861	40
0002902112 X	65	1671953 VI	67		
0012955906	48	1673553	39		
0022950206	45	1756460	43		
0022950806	47	1764082	59		
0022952507	44	1764085	59		
0022959106	45	1769778 R	59		
0069976447	56	1881850	61		
0501211805	83	1927829	45		
0501211805 P	83	1927829 X	63		
0501216319 X	82	1927829 XA	62		
0501217253 X	82	1952214	55		
0750112253	58	2023059 X	75		
23016	73	3092575 V	56		
23814	74	3093098 V	79		
24872	74	3093230 V	58		
26000	63	3094550 V	78		
244441 X	54	3094730 V	62		
271194 V	81	4854828	44		
273660 V	61	8171721 VI	66		
284015	36	20528900 V	40		
360717	66	20553368 V	43		
371612 B	68	20835246 V	47		
371612 I	66	21284852 V	52		
389894	73	22809232 VR	74		
446414	51	41211005	41		
550453	78	41211007	60		
550455	79	41211007 C	41		
550456	75	41285167	50		
550464	62	42568691	71		
550465	75	43234474	38		
550465 A	76	85002040 V	71		
550465 P	76	85102142 V	79		
1069205 VI	69	85102142 VA	80		
1321239	64	85102142 VP	80		
1321420	37	950321027	80		
1321420 X	57	950321029	81		
1321420 XV	56	1316051835 C	73		
1337894	53	3842957006	46		
1340404	53	3862957007	48		
1342106	60	3882957006	48		
1345149	36	5801317166	72		
1345149 X	55	5801317171	41		
1345151	37	5801784907	67		
1355979	43	5949890257 R	82		
1358801	46	9700510010	84		
1358801 A	46	9700511640	68		
1369053	61	9700512270	69		
1400769	39	9700512320	71		
1405803 R	63	9700516420	72		
1421186 I	69	9700516420 XA	83		
1433655	60	9792950106	42		
1455730	65	81307156149	44		
1484715	76	81307156152	49		
1484715 E	77	6025003031003 R	81		
1484715 P	77	2P0721405	50		
1484715 X	77	2RP141147A	54		
1493461	70	2RP253861	40		
1507790	39	2S2253853A	52		
1521976 V	51	2S2253853B	52		
1523399 R	78	2S2298109	38		
1523635	54	2T2721261E	72		
1526816 V	36	628277AM	67		
1526817 VX	55	629300AM	68		
1527363 V	37	6310361AM	70		
1527463 VX	57	9792950006A	42		
1620462 V	49	A3842950006	49		
1628218 V	47	A9452642127	51		



NTI INDEX CODE - WABCO



004109	18
004110	17
005081	3
005084	4
005094	3
005097	3
006456	8
006457	9
006463	11
007179	14
007187	17
007404	4
007423	18
007424	16
007461	16
007719	13
007776	16
009685	12
011006	19
012033	11
012713	12
013189	5
013204	10
014801	7
014802	5
015449	6
016060	15
016534	11
017565	6
017627	10
017900	4
018154	20
018364	17
018559	15
018642	20
018755	7
018823	9
018824	20
019350	15
019385	5
019441	21
023731	10
023811	14
023882	8
024436	9
024593	12
024689	14
024872	13
025011	19
025059	7
025434	19
025662	18
026026	6
026083	13
027234	8





NTI INDEX CODE - KNORR

001730	23
004135	31
007433	31
009939	32
012370	29
012981	31
014716	29
015873	28
016350	29
016407	30
016533	26
017157	25
017923	30
018069	26
018243	24
018730	23
018826	23
019224	32
019620	22
019631	22
021935	30
022595	26
023058	32
023733	25
024356	22
024551	27
024573	25
024643	27
024690	27
027210	28
027211	28



NTI INDEX CODE - VARGA



004560	33
013494	33
019223	33



Teleendas: +55 19 3834.9822



+55 54 3211.1800



+55 11 2626.8839

www.ntifreios.com.br



NTI INDEX CODE - BENDIX

001887	34
001921	35
003513	34
015165	34
015166	35

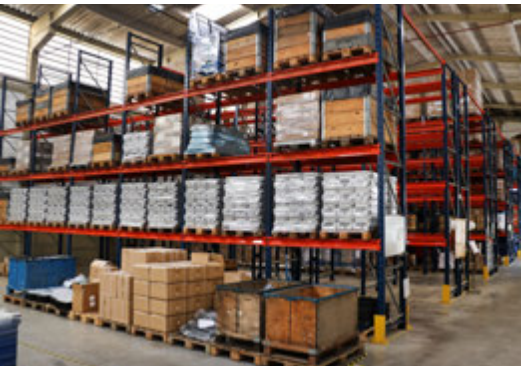
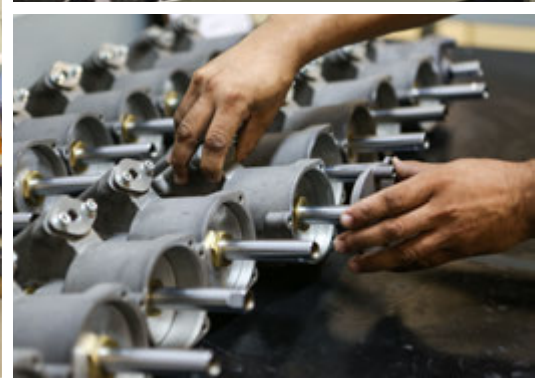
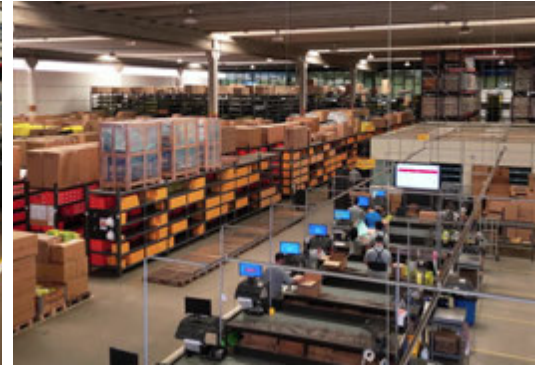
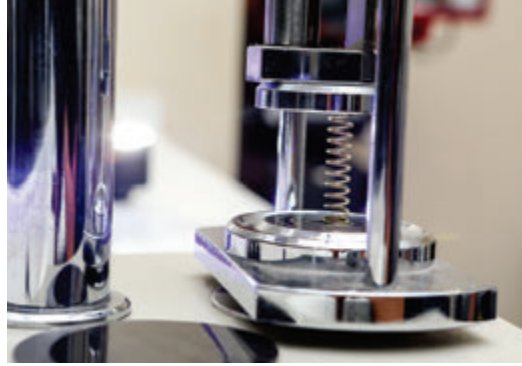


NTI INDEX CODE - OTHER PRODUCTS



000983	54	017278	77	026334	74
001192	36	017474	56	026416	38
001611	66	017478	58	027234	72
001955	78	017482	80		
001956	79	017495	81		
001957	75	017550	41		
002531	61	017551	45		
002989	73	017728	38		
003096	46	017731	52		
003254	70	017830	71		
003486	55	017902	45		
003490	39	017903	47		
003499	62	017913	53		
003514	51	017961	43		
003515	49	017979	82		
003517	81	018092	41		
004241	57	018151	52		
005056	54	018168	78		
005095	40	018469	69		
005096	40	018676	45		
005800	39	018680	81		
006044	65	018738	39		
006048	78	018810	49		
006051	37	018855	70		
006282	76	018964	62		
006544	75	018975	77		
007263	46	019271	63		
007438	36	019441	84		
007721	55	019610	43		
007724	57	019618	44		
007993	36	020391	61		
009066	37	021653	67		
009242	64	022635	40		
009598	50	023183	57		
009624	47	023186	56		
009744	37	023814	74		
009877	79	023829	58		
009999	73	023897	72		
010204	59	024189	83		
010295	54	024217	50		
011231	55	024230	59		
012508	60	024238	73		
012516	46	024281	53		
012523	48	024330	41		
012524	48	024435	63		
012525	48	024479	83		
012772	80	024507	76		
013003	61	024573	71		
013647	56	024760	71		
013935	52	024785	82		
014256	53	024835	42		
014576	68	024836	42		
014669	79	024837	43		
014715	59	024838	42		
014970	47	024872	74		
015102	38	025015	82		
015254	65	025059	72		
015449	69	025066	75		
016126	66	025273	51		
016163	60	025296	50		
016387	58	025297	49		
016426	60	025434	83		
016462	68	025839	63		
016633	80	025927	44		
016634	76	025928	44		
016635	77	026021	68		
016820	69	026022	67		
016822	67	026025	70		
017175	65	026205	62		
017176	66	026322	51		







**NTI FREIOS
2024**



www.ntifreios.com.br

EMPRESA CERTIFICADA
CERTIFIED COMPANY **ISO 9001:2015**