



CATÁLOGO PEÇAS DE REPOSIÇÃO
Spare Parts Catalogue
HIDRÁULICOS
2025

A Cipec iniciou suas atividades em 1983 na cidade de São Caetano como um pequeno distribuidor e fabricante de peças de reposição para caminhões e ônibus. Trabalhando com empenho e seriedade, a Cipec rapidamente ampliou seu leque de produtos de distribuição, alcançando logo em seguida o status de referência nacional no mercado de reposição da linha Scania.

Em 1999, devido ao ritmo crescente dos negócios, a estrutura da Cipec já não comportava a demanda, levando a empresa a transferir suas atividades para uma área de 20.000 m² em Indaiatuba, localizada estrategicamente no interior paulista. Nesse novo local, a empresa investiu fortemente na parte fabril e agregou as linhas Volvo, VW, MWM, Cummins e Iveco.

Com amplo espaço fabril e novos nichos de mercado se abrindo, em 2003 a Cipec inovou mais uma vez, implantando uma completa linha de servos de embreagem, válvulas e reparos de freios para linha pesada. Surgiu então a NTI, uma marca Cipec que em pouco tempo ficaria conhecida no mercado, oferecendo um produto competitivo e altamente confiável.

Atualmente, a Cipec conta com mais de 170 colaboradores e comercializa mais de 22.000 itens a partir de sua unidade fabril localizada em Indaiatuba, ampliando ainda mais sua capacidade de produção e expedindo mais de 30 toneladas de produtos por dia para mais de 50 países em todo o mundo.

Cipec began its activities in 1983 in the city of São Caetano as a small distributor and manufacturer of spare parts for trucks and buses. Working with dedication and seriousness, Cipec quickly expanded its range of distribution products and soon achieved national reference status in the replacement market for the Scania line.

By 1999, its structure could no longer accommodate the growing pace of business, prompting Cipec to transfer its operations to a 20,000 m² area in Indaiatuba, strategically located in the interior of São Paulo. Strong investments were made in the manufacturing sector, and the Volvo, VW, MWM, Cummins, and Iveco lines were added.

With ample manufacturing space and new market niches emerging, Cipec innovated once again in 2003, introducing a complete line of clutch servos, valves, and brake repair kits for heavy-duty applications. Thus, NTI was born, a Cipec brand that quickly became known in the market, offering competitive and highly reliable products.

Today, Cipec employs over 170 employees and sells over 22,000 items from its manufacturing facility located in Indaiatuba, further increasing its production capacity and shipping over 30 tons of products per day to more than 50 countries worldwide.

La Cipec inició sus actividades en 1983 en la ciudad de São Caetano como un pequeño distribuidor y fabricante de repuestos para camiones y autobuses. Trabajando con dedicación y seriedad, Cipec amplió rápidamente su gama de productos de distribución y pronto alcanzó el estatus de referencia nacional en el mercado de repuestos para la línea Scania.

Para 1999, su estructura ya no podía soportar el creciente ritmo de negocios, lo que llevó a Cipec a trasladar sus operaciones a una área de 20,000 m² en Indaiatuba, estratégicamente ubicada en el interior de São Paulo. Se realizaron fuertes inversiones en el sector manufacturero y se añadieron las líneas Volvo, VW, MWM, Cummins y Iveco.

Con un amplio espacio de fabricación y nuevos nichos de mercado emergentes, Cipec innovó una vez más en 2003, introduciendo una línea completa de servos de embrague, válvulas y reparaciones de frenos para aplicaciones de servicio pesado. Así nació NTI, una marca de Cipec que rápidamente se hizo conocida en el mercado, ofreciendo productos competitivos y altamente confiables.

Hoy en día, Cipec emplea a más de 170 trabajadores y vende más de 22,000 artículos desde su planta de fabricación ubicada en Indaiatuba, aumentando aún más su capacidad de producción y enviando más de 30 toneladas de productos al día a más de 50 países en todo el mundo.



SCANIA

3

ABRACADEIRA	3
ANEL TRAVA	3
BOMBA DE OLEO	3
BOMBA DIRECAO HIDRAULICA	3
BORRACHA	4
CILINDRO	4
FLANGE	4
FLEXIVEL	5
GUARDA-PO	6
JUNTA	6
MANGUEIRA	6
O'RING	6
PARAFUSO	7
REPARO FREIO	7
RESERVATORIO	7
SUPORTE	7
TAMPA	8
VARETA	8

VOLVO

9

BOMBA DE OLEO	9
BOMBA DIRECAO HIDRAULICA	9
CILINDRO	9
FLEXIVEL	9
MANGUEIRA	10
RESERVATORIO	10
TAMPA	10
VARETA	10

VW

11

BOMBA DIRECAO HIDRAULICA	11
FLEXIVEL	11
RESERVATORIO	11
TAMPA	11
TUBO	12
VARETA	12

FORD

13

RESERVATORIO	13
TAMPA	13

IVECO

14

BOMBA DE OLEO	14
BOMBA DIRECAO HIDRAULICA	14
CILINDRO	14
RESERVATORIO	14
VARETA	15

MERCEDES

16

RETENTOR	16
----------	----

AGRALE

17

RESERVATORIO	17
--------------	----

CONTATOS

18

ÍNDICE POR CÓDIGO

19



SCANIA 3

CLAMP	3
LOCK RING	3
OIL PUMP	3
POWER STEERING PUMP	3
RUBBER	4
CYLINDER	4
FLANGE	4
FLEXIBLE	5
DUST COVERS	6
GASKET	6
HOSE	6
O'RING	6
SCREW	7
AIR BRAKE REPAIR KIT	7
CONTAINERS	7
BRACKET	7
COVER	8
ROD	8

VOLVO 9

OIL PUMP	9
POWER STEERING PUMP	9
CYLINDER	9
FLEXIBLE	9
HOSE	10
CONTAINERS	10
COVER	10
ROD	10

VW 11

POWER STEERING PUMP	11
FLEXIBLE	11
CONTAINERS	11
COVER	11
TUBE	12
ROD	12

FORD 13

CONTAINERS	13
COVER	13

IVECO 14

OIL PUMP	14
POWER STEERING PUMP	14
CYLINDER	14
CONTAINERS	14
ROD	15

MERCEDES 16

RETAINER	16
----------	----

AGRALE 17

CONTAINERS	17
------------	----

CONTACTS 18

INDEX BY CODE

19

1.01 ABRACADEIRA CLAMP

1673643 CLAMP COMPLETE 112/3

ABRACADEIRA RESERV. HIDRAULICO 112/3
003633



T112 / T113 / F113 / R113 / K112 / R112 / R142 /
T142 / F112 / K113 / R143 / 93 /

1.02 ANEL TRAVA LOCK RING

804781 HYDR. STEERING BOX

ANEL TRAVA ROL. CX. DIR. HIDR.
002126



K113 / R143 / L113 / P93 / P.G.R. / 94 /

804828 HYDR. STEERING BOX

ANEL TRAVA ROL. CX. DIR. HIDR.
002139



T112 / T113 / F113 / R113 / K112 / K113 / R143 /

1.03 BOMBA DE OLEO OIL PUMP

1378527 CABIN TILT HYDRAULIC

B'B HIDR. BASCUL. CABINE
025986
1575153
1422728
575153
368926



1378531 HYDRAULIC CABIN TILT

B'B HIDR. BASCUL. CABINE 2 PONTAS S.3
017545



R113 /

1534976 HYDRAULIC PUMP S.4

B'B HIDR. BASCUL. CABINE S.4
015470



114 / 124 / 164 / 94 /

1534977 CABIN TILT HYDRAULIC

B'B HIDR. BASCUL. CABINE S4/P.G.R.T.
025987



1794906 CABIN TILT HYDRAULIC

B'B HIDR. BASCUL. CABINE P.G.R.T.
025990



1794907 CABIN HYDRAULIC PUMP

B'B HIDR. BASCUL. CABINE P.G.R.T.
019509
2204435



P.G.R. / P.G.R.S. /

2204436 CABIN TILT HYDRAULIC

B'B HIDR. BASCUL. CABINE P.G.R.T.
025989
1855566



1.04 BOMBA DIRECAO HIDRAULICA POWER STEERING PUMP

1308495 POWER STEERING PUMP

B'B DIRECAO HIDRAULICA 113
014907
1457708
1421272
571434



/ T113 / 114 / F113 / K113 / R113 / L113

1421273 POWER STEERING PUMP

B'B DIRECAO HIDR. DSC1121/22/23/DTC11
018263
1457709



1457710 POWER STEERING PUMP

B'B DIRECAO HIDRAULICA S.4/16DM3
014908
1439958
1422417
1333790



1457711 POWER STEERING PUMP

B'B DIRECAO HIDRAULICA S.4/22DM3
014909
2064855
1449167



114 / K124 / 94 / K94 / K114 / 124 / 164 /

1.04 BOMBA DIRECAO HIDRAULICA

POWER STEERING PUMP

1504006 POWER STEERING PUMP S.

B'B DIRECAO HIDRAULICA S.4

015343
1371404
ZF7685955787



114 / 124 / K124 /

255028 POWER STEERING PUMP

B'B DIRECAO HIDRAULICA 112

014906
531364
259309
ZF7677955106



/ T112 / K112 / R112 / F112

1.05 BORRACHA

RUBBER

144272 HYDRAULIC OIL PUMP

BUCHA BORRACHA EIXO B'B HIDR. 111/2/3

000328
340895
1117730



L75 / L76 / LK141 / LK140 / 110 / 111 / T112 /
K112 / R112 / R142 / T142 / F112 /

1.06 CILINDRO

CYLINDER

1500068 POWER STEERING

CILINDRO HIDR. DIRECAO S4/P.G.R.T.

025994
1364258



94 / 114 / 124 / 164 / P.G.R. / P.G.R.S. /

1549737 CABIN TILT HYDRAULIC

CILINDRO HIDR. BASCUL. CABINE P.G.R.T.

025992
1477876



1549738 CABIN TILT CYLINDER S.4

CILINDRO HIDR. BASCUL. CAB. CG (TETO)

013158
1517324
1466506
1423396



114 / 124 / 164 / P.G.R. /

1549739 CABIN TILT CYLINDER S.4

CILINDRO HIDR. BASCUL. CABINE CP (TETO)

015471
1517325
1466507
1423397
1354889



94 / 114 / 124 / P.G.R. /

1720925 CABIN TILT HYDRAULIC

CILINDRO HIDR. BASCUL. CABINE P.G.R.T.

025991
1512253



1720927 CABIN TILT CYLINDER S.4

CILINDRO HIDR. BASCUL. CABINE

025061
1511922



1790111 CABIN TILT HYDRAULIC

CILINDRO HIDR. BASCUL. CABINE P.G.R.T.

025993



1848921 CABIN TILT CYLINDER S.4

CILINDRO HIDR. BASCUL. CABINE

025062



1.07 FLANGE

FLANGE

1519675 POWER STEERING PUMP

FLANGE B'B DIRECAO HIDRAULICA S.4

013757
1498190
1461336
1404460



114 / 124 / P.G.R. / K124 /

1.08 FLEXIVEL
FLEXIBLE

1371200 FLEXIBLE HIDRAULIC CAB
FLEX. HIDR. BASC. CABINE 94/114/24/64
006829
2142436
1526569
40669

114 / 124 / 164 / 94 /

1371201 FLEXIBLE HIDRAULIC
FLEX. HIDR. TRAVA BASC. CABINE 94/114/24/
006830
2142438
1526570
40675

114 / 124 / 164 / 94 /

1371206 FLEXIBLE HIDRAULIC CAB
FLEX. HIDR. BASC. CABINE 94/114/24/64
006827
2142425
1526573
1426339

114 / 124 / 164 / 94 /

1371207 FLEXIBLE HIDRAULIC CAB
FLEX. HIDR. BASC. CABINE 94/114/24/64
006828
2142433
1851212
1526571

114 / 124 / 164 / 94 /

1371208 FLEXIBLE HIDRAULIC CAB
FLEX. HIDR. BASC. CABINE 94/114/24/64
006826
2142423
1851213
1526572

114 / 124 / 164 / 94 /

1851249 FLEXIBLE HIDRAULIC CAB
FLEX. HIDR. BASC. CABINE S.4/P.G.R.T =
017118
2142410
1767480

P.G.R. /

2142418 FLEXIBLE HYDRAULIC FOR
FLEX. HIDR. BASCUL. CABINE P.G.R.
019598
1851250

2142429 FLEXIBLE HIDRAULIC CAB
FLEX. HIDR. BASC. CABINE C14 P.G.R.T.
019332
1851247

P.G.R. / P.G.R.S. /

2142431 FLEXIBLE HIDRAULIC CAB
FLEX. HIDR. BASC. CABINE S.4/P.G.R.T.
019334
1851227

/ 94 / 114 / 124 / 164 / P.G.R. / P.G.R.S.

2142439 FLEXIBLE HIDRAULIC CAB
FLEX. HIDR. BASC. CABINE CP14 P.G.R.T.
019333
1851248

114 / 124 / 164 / P.G.R. / 94 / P.G.R.S. /

2142514 FLEXIBLE HIDRAULIC CAB
FLEX. HIDR. BASC. CABINE C14 P.G.R.T.
019331
1851253

P.G.R. / P.G.R.S. /

2142553 FLEXIBLE CABIN P.G.R.
FLEX. HIDR. BASCUL. CABINE P.G.R.
019592
1851238

300807 HYDRAULIC STEERING
FLEXIVEL DIR. HIDRAULICA 112/142
001340

T112 / T142 / L113 /

300808 HYDRAULIC STEERING
FLEXIVEL DIR. HIDRAULICA 112/142
001341
525642

T112 / K112 / T142 /

307614 HYDRAULIC STEERING
FLEX. DIR. HIDR. =580MM= 112
003180

T112 / T113 /

322567 HYDRAULIC STEERING
FLEXIVEL DIR. HIDR. T/R112/3/R142
001513
312346

T112 / R112 / R142 / K113 / T113 /

322568 HYDRAULIC STEERING
FLEXIVEL DIR. HIDRAULICA T/142
003170

T112 / T113 / F113 / R112 / R142 / K113 / L113 /

1.09 GUARDA-PO DUST COVERS

161171 HYDR. STEERING BOX

GUARDA PO CX. DIRECAO HIDR.
000414

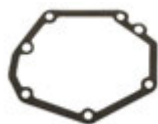


T112 / T113 / F113 / K113 / R113 / R143 / K112 /
R112 / L75 / L76 / R142 / LK141 / LK140 / 110 /

1.10 JUNTA GASKET

1374346 PUMP HYDR. GASKET 94/

JTA B'B HIDR. 94/114/24
005994
1467988



114 / 124 / K124 /

1461331 HYDRAULIC STEERING

JUNTA BOMBA DIRECAO HIDR. S.4
011704



114 / 124 / P.G.R. / K124 /

301632 DISTRIBUTION COVER "P"

JUNTA TAMPA DISTR. "P" (B'B HIDR.) 112

001359
1388685
371495
332598
255185
139274



LK141 / LK140 / 110 / 111 / T112 / T113 / F113 /
R113 / K112 / R112 / R142 / T142 / F112 / K113 /

1.11 MANGUEIRA HOSE

1375391 HYDR. STEERING

MANG. RESERV. DIRECAO HIDR. 94/114/24/64
009048



114 / 124 / 164 / P.G.R. / 94 /

2095471 POWER STEERING

MANGUEIRA RESERV. DIRECAO HIDRAULICA
024996



2124545 HYDRAULIC FLUID

MANGUEIRA RESERV. HIDRAULICO P.G.R.T.

019495
2095472
1446715



P.G.R. / P.G.R.S. /

2124546 STEERING PUMP HOSE P.G.

MANGUEIRA RESERV. DIR. HIDRAULICA P.G.R.

019574
2095473
1853231



P.G.R. / P.G.R.S. /

2124547 RESERVOIR HOSE P.G.R.T.

MANGUEIRA RESERV. HIDRAULICO P.G.R.T.

019497
2095474
1853232



P.G.R. / P.G.R.S. /

2130341 STEERING PUMP HOSE P.G.

MANGUEIRA RESERV. DIR. HIDRAULICA P.G.R.

019568
1446714

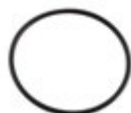


P.G.R. / P.G.R.S. /

1.12 O'RING O'RING

368035 HYDRAULIC PUMP O'RING 94/

O'RING B'B HIDRAULICA 94/114/124
006619



T113 / F113 / R113 / R142 / T142 / K113 / R143 /
L113 / P93 / 114 / 124 / 164 / P.G.R. / K124 / 94 /

811052 HYDR. PUMP O'RING 112/3

O'RING BOMBA HIDRAULICA 112/3

002324
804723
392654



LK141 / LK140 / 110 / 111 / T112 / T113 / R113 /
R112 / R142 / T142 / 114 / 124 / 164 / 94 / T143 /

1.13 PARAFUSO SCREW

258698 HYDRA. STEERING SCREW

PARAFUSO CX. DIR. HIDRAULICA
001064



/ LK140 / LK141 / T112 / R112 / K112 / F112 /
R142 / T142 / F113 / K113 / R113 / T113 / R143 /

812392 HOLLOW SCREW 18 MM

PARAFUSO VAZ. (FLEX. DIR. HIDR) 18MM
002358

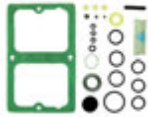


LK141 / LK140 / T112 / T113 / F113 / R113 / K112
/ R112 / T142 / F112 / K113 / R143 / L113 / 114 /

1.14 REPARO FREIO AIR BRAKE REPAIR KIT

1320457 REPAIR KIT

REP. B/B HIDRAUL. BASCUL. S4
012036
1541984
1427793



R113 / R143 / 114 / 124 / 164 / P.G.R. / 94 /

1.15 RESERVATORIO CONTAINERS

1379152 CLUTCH PEDAL HYDRAULIC

RESERV. CIL. HIDR. PEDAL EMBR. P93/R143
006955
1349152
1118590



T113 / R113 / R143 / P93 /

1381561 HYDRAULIC CYLINDER

RESERV. CIL. HIDR. EMBR. S.4
010697



114 / 124 / 164 / P.G.R. / 94 / F94 / K94 /

1405788 HYDRAULIC OIL RESERVOIR

RESERV. OLEO HIDRAULICO S.4
009244
1894289
1461351



114 / 124 / 164 / 94 /

524094 HYDRAULIC OIL CONTAINER

RESERV. OLEO DIR. HIDRAULICA 113
006604
537016
297353



T112 / T113 / F113 / R113 / K112 / R112 / R142 /
T142 / F112 / K113 / R143 / L113 / P93 /

538770 HYDRAULIC CYLINDER

RESERV. CIL. HIDR. EMBR. K113/R/T112/3
001920



T112 / K112 / R112 / R142 / T142 / F112 /

0081172032 POWER STEERING OIL

RESERV. OLEO DIR. HIDRAULICA 113
025457
537016
297353

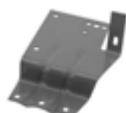


T112 / T113 / F113 / R113 / K112 / R112 / R142 /
T142 / F112 / K113 / R143 / L113 / P93 /

1.16 SUPORTE BRACKET

397170 HYDR. STEERING OIL

SUPORTE RESERV. OLEO DIR. HIDR. T113
002735
305284



/ T112 / T113 / T142 /

1.17 TAMPA

COVER

1361457 RESERVOIR COVER

TAMPA RESERV. OLEO HIDR. S.4
009007



114 / 124 / 164 / P.G.R. / 94 /

1374295 RESERVOIR COVER 113

TAMPA RESERV. CIL. HIDRAUL. 113
009093
1455736
280502



T113 / F113 / R113 / K113 / R143 / L113 / P93 /

318537 RESERVOIR COVER

TAMPA RESERV. HIDR. T113/P93/R143
009092
93193396



T112 / T113 / F113 / R113 / K112 / R112 / R142 /
T142 / F112 / K113 / R143 / L113 / P93 /

522325 HYDR. CYLINDER

TAMPA RESERV. CILINDRO HIDR.
001711



/ T112 / R112 / K112 / F112 / T142 / R142

T2D145407 RESERVOIR COVER

TAMPA RESERV. HIDR.
016262
93193396



R143 / P93 / 113

1.18 VARETA

ROD

1403855 OIL HIDR. DIPSTICK 94/114/

VARETA NIVEL OLEO DIR. HIDR. 94/114/124/
006609
1386973



114 / 124 / 164 / P.G.R. / 94 /

1953396 LEVEL LINK 112/3

VARETA NIVEL OLEO DIR. HIDR. 112/3
003504



T112 / T113 / F113 / R113 / K112 / R112 / R142 /
T142 / F112 / K113 / R143 / L113 / P93 /

2.01 BOMBA DE OLEO

OIL PUMP

1075296 V HYDRAULIC PUMP

B'B HIDR. BASCUL. CABINE FH =ATE 2003=
014890
1095005 V



FH16 / FM10 / FM7 / FH12 / FM12 /

20917279 V CABIN TILT HYDRAULIC

B'B HIDR. BASCUL. CABINE FH =PARTIR 2004=
014891
20455262 V



FH16 / FH12 / FH / FM / FM12 / FM9 /

2.02 BOMBA DIRECAO HIDRAULICA

POWER STEERING PUMP

1589231 V POWER STEERING PUMP

B'B DIRECAO HIDRAULICA NL10/EDC
014902
ZF7673955225
V



NL10 / EDC /

3172490 V HYDRAULIC POWER

B'B DIRECAO HIDRAULICA FH12/FM12
018264



3986328 V POWER STEERING PUMP

B'B DIRECAO HIDRAULICA FH/NH12
014903
ZF7684974704
V



FH12 / FH / FM / FM12 / B12M / NH12 /

2.03 CILINDRO

CYLINDER

20922303 V CABIN TILT CYLINDER

CILINDRO HIDR. BASCUL. CABINE
025063



FH12 / FM12 /

20922305 V TIPPER HYDRAULIC CABIN

CILINDRO HIDR. BASCUL. CABINE
025064



2.04 FLEXIVEL

FLEXIBLE

3988823 V CABINE FLEXIBLE

FLEX. HIDR. BASC. CABINE FH12/FM12
025590



2.05 MANGUEIRA

HOSE

20544321 V RESERVOIR HYDRAULIC
MANGUEIRA RESERV. HIDRAULICO FH/FM/NH
026250



2.06 RESERVATORIO

CONTAINERS

1592945 V HIDRAULIC OIL CONTAINER
RESERV. OLEO DIR. HIDRAULICA N/NL/FH/FM
016261
HCV00448 V



B10M / NL12 / NL10 / N10 / N12 / FH12 / FM12 /
B12M / NH12 / B58E /

0081172032 POWER STEERING OIL
RESERV. OLEO DIR. HIDRAULICA 113
025457
HCV00448 V



B10M / NL12 / NL10 / N10 / N12 / FH12 / FM12 /
B12M / NH12 / B58E /

2.07 TAMPA

COVER

1696361 V RESERVOIR COVER
TAMPA RESERV. DIR. HIDR. N/NL/FH/FM
016259



2.08 VARETA

ROD

1696362 V OIL DIPSTICK 112/3
VARETA NIVEL OLEO DIR. HIDR. N/NL/FH/FM
016260
3092770 V



3.01 BOMBA DIRECAO HIDRAULICA POWER STEERING PUMP

2R0145157 POWER STEERING PUMP

B'B DIRECAO HIDRAULICA
014905



7.100 / 8.140 / 8.140CO / 8.140CE / 7.110 / 8.150 /
7.120 / 8.120 / 9.150OD / 8.120OD / 8.150 OD / 8.

ZF7673975816 POWER STEERING PUMP

B'B DIRECAO HIDRAULICA
023256



7.100 / 8.140 / 8.140CO / 8.140CE / 7.110 / 8.150 /
7.120 / 8.120 / 9.150OD / 8.120OD / 8.150 OD / 8.

3.02 FLEXIVEL FLEXIBLE

TE3145745A HYDR. STEERING HOSE

FLEXIVEL DIRECAO HIDRAULICA
004261



/ 14.210

3.03 RESERVATORIO CONTAINERS

2TA145171 HIDRAULIC OIL CONTAINER

RESERV. OLEO HIDRAULICO
006781
T16145171
TJG145171



7.100 / 8.140 / 8.140CO / 8.140CE / L.80 / 12.
140T / 12.170BT / 12.180 / 14.150 / 14.170BT /

0081172032 POWER STEERING OIL

RESERV. OLEO DIR. HIDRAULICA 113
025457
T16145171
TJG145171



7.100 / 8.140 / 8.140CO / 8.140CE / L.80 / 12.
140T / 12.170BT / 12.180 / 14.150 / 14.170BT /

3.04 TAMPA COVER

T2D145407 RESERVOIR COVER

TAMPA RESERV. HIDR.
016262
85HU3B725A



7.100 / 8.100 / 8.140 / 8.140CO / 8.140CE / L.80 /
12.140T / 12.170BT / 12.180 / 14.150 / 14.170BT

3.05 TUBO

TUBE

TAP145179 HYDR. STEERING OIL

TUBO RETORNO OLEO DIRECAO HIDR.

003979
2TA145179



/ 7.100 / 8.100 / 8.140 / 8.140CO / 8.140CE / 8.140 ARGEN. / 8.140 CHILE / L.80 / 8.140CKD

TGG145177 PRESSURE PIPE

TUBO PRESSAO B'B HIDRAULICA

014098



14.200 / 14.150 / 12.180 / 14.180 / 14.220 / 12.170BT / 14.170BT /

3.06 VARETA

ROD

2TA422397 HYDR. STEERING OIL

VARETA NIVEL OLEO DIR. HIDR.

005937
T2D422397



12.140T / 12.170BT / 12.180 / 14.150 / 14.170BT / 14.180 / 14.220 / 16.170 / 16.180CO / 16.210CO /

4.01 RESERVATORIO

CONTAINERS

0081172032 POWER STEERING OIL

RESERV. OLEO DIR. HIDRAULICA 113

025457



815 / 1317 / 1417 / F14000HD / F12000L / 1717 /
1721 / 1421 / 1521 / 1722 / 1731 / 2631 / 915 /

XC453531AA HIDRAULIC OIL CONTAINER

RESERV. OLEO HIDRAULICO

021645



815 / 1317 / 1417 / F14000HD / F12000L / 1717 /
1721 / 1421 / 1521 / 1722 / 1731 / 2631 / 915 /

4.02 TAMPA

COVER

T2D145407 RESERVOIR COVER

TAMPA RESERV. HIDR.

016262



815 / 1415CUM / 1317 / 1417 / 1215CUM /
F14000HD / F12000L / 1717 / 1617 / 1722 / 1731 /

5.01 BOMBA DE OLEO

OIL PUMP

500316981 CABIN HYDRAULIC PUMP

B/B HIDR. BASCUL. CABINE TECTOR/CURSOR/
015468
99458298



EUROCARGO / TECTOR / CURSOR / 230E24
TECTOR 6X2 / 260E25 CAMINHAO 6X4 / 170E25

99458304 HYDRAULIC CABIN PUMP

B/B HIDR. BASCUL. CABINE EUROTECH/
015467
98478156



EUOTRAKKER / EUROTECH / POWERSTAR /
450E37 TRATOR 4X2 / 190E42 TRATOR 4X2 /

5.02 BOMBA DIRECAO HIDRAULICA

POWER STEERING PUMP

41211223 POWER STEERING PUMP S.

B/B DIRECAO HIDR. S.STRALIS/TRAKKER/
017024
ZF8695955116



NOVO STRALIS / STRALIS / CURSOR / NOVO
TRAKKER / TRAKKER /

5.03 CILINDRO

CYLINDER

504062817 CABIN TILT CYLLINDER

CIL. HIDR. BASCUL. CABINE EUROTECH/
015469



EUOTRAKKER / EUROTECH / 450E37
TRATOR 4X2 / 190E42 TRATOR 4X2 / 740E42

5.04 RESERVATORIO

CONTAINERS

0081172032 POWER STEERING OIL

RESERV. OLEO DIR. HIDRAULICA 113
025457



EUROCARGO / NOVO STRALIS / STRALIS /
EUOTRAKKER / NOVO TRAKKER / TRAKKER

8188037 OIL TANK

RESERV. OLEO DIR. HIDRAUL. N.STRALIS/
016728



EUROCARGO / NOVO STRALIS / STRALIS /
EUOTRAKKER / NOVO TRAKKER / TRAKKER

5.05 VARETA

ROD

93192923 OIL LEVEL INDICATOR

INDIC. NIVEL OLEO HIDR. N.STALIS/
016735



DAILY / EURO CARGO / NOVO TRAKKER / NOVO
STRALIS / STRALIS / DAILY/SCUDATO /

6.01 RETENTOR
RETAINER

0019970646 RETAINER
RETENTOR DIR. HIDRAULICA =ZF=
007679



7.01 RESERVATORIO CONTAINERS

6007007043002 POWER STEERING OIL

RESERV. OLEO DIR. HIDRAULICA 113
023487



VOLARE W9 FLY-EURO V /

0081172032 POWER STEERING OIL

RESERV. OLEO DIR. HIDRAULICA 113
025457



VOLARE W9 FLY-EURO V

Vendas / Sales: vendas@cipec.com.br
Geral / General: cipec@cipec.com.br
Televendas / Phone: +55 19 3834-9822
Fax / Fax: 0800.707.9822
www.cipec.com.br

0081172032	7	2204436	3
144272	4	T2D145407	8
161171	6		
255028	4		
258698	7		
300807	5		
300808	5		
301632	6		
307614	5		
318537	8		
322567	5		
322568	5		
368035	6		
397170	7		
522325	8		
524094	7		
538770	7		
804781	3		
804828	3		
811052	6		
812392	7		
1308495	3		
1320457	7		
1361457	8		
1371200	5		
1371201	5		
1371206	5		
1371207	5		
1371208	5		
1374295	8		
1374346	6		
1375391	6		
1378527	3		
1378531	3		
1379152	7		
1381561	7		
1403855	8		
1405788	7		
1421273	3		
1457710	3		
1457711	3		
1461331	6		
1500068	4		
1504006	4		
1519675	4		
1534976	3		
1534977	3		
1549737	4		
1549738	4		
1549739	4		
1673643	3		
1720925	4		
1720927	4		
1790111	4		
1794906	3		
1794907	3		
1848921	4		
1851249	5		
1953396	8		
2095471	6		
2124545	6		
2124546	6		
2124547	6		
2130341	6		
2142418	5		
2142429	5		
2142431	5		
2142439	5		
2142514	5		
2142553	5		

0081172032	10
1075296 V	9
1589231 V	9
1592945 V	10
1696361 V	10
1696362 V	10
3172490 V	9
3986328 V	9
3988823 V	9
20544321 V	10
20917279 V	9
20922303 V	9
20922305 V	9

0081172032	11
2R0145157	11
2TA145171	11
2TA422397	12
T2D145407	11
TAP145179	12
TE3145745A	11
TGG145177	12
ZF7673975816	11



0081172032	13
T2D145407	13
XC453531AA	13

0081172032	14
8188037	14
41211223	14
93192923	15
99458304	14
500316981	14
504062817	14



0019970646

16

0081172032 17
6007007043002 17



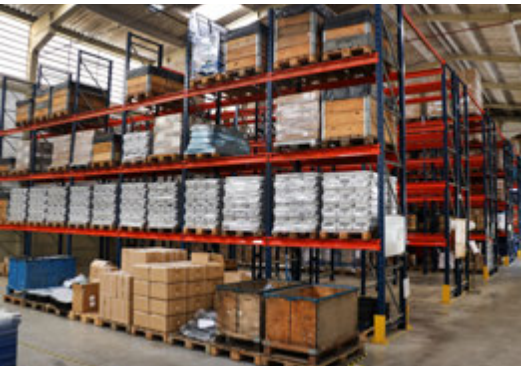
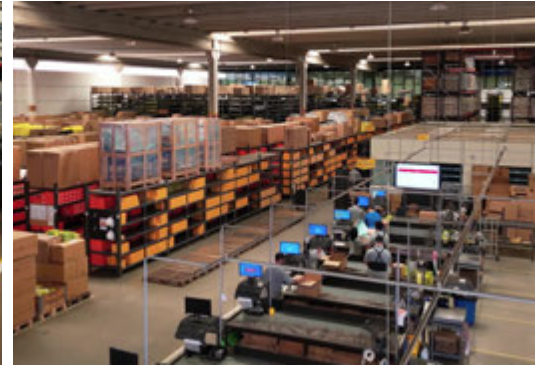
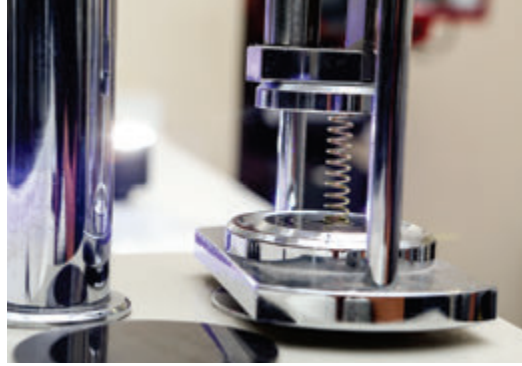
Teleendas: + 55 19 3834.9822



+ 55 54 3211.1800



+ 55 11 2626.8839





www.cippec.com.br

EMPRESA CERTIFICADA
CERTIFIED COMPANY **ISO 9001:2015**

Conheça toda nossa Linha de Produtos

- **Scania**
- **Volvo**
- **Iveco**
- **VW**
- **Mercedes**
- **Freios**



GRUPOCIPEC