



# **CATÁLOGO PEÇAS DE REPOSIÇÃO**

*Spare Parts Catalogue*

## **COXINS**

*Cipec Rubber Mountings*

*2025*

A Cipec iniciou suas atividades em 1983 na cidade de São Caetano como um pequeno distribuidor e fabricante de peças de reposição para caminhões e ônibus. Trabalhando com empenho e seriedade, a Cipec rapidamente ampliou seu leque de produtos de distribuição, alcançando logo em seguida o status de referência nacional no mercado de reposição da linha Scania.

Em 1999, devido ao ritmo crescente dos negócios, a estrutura da Cipec já não comportava a demanda, levando a empresa a transferir suas atividades para uma área de 20.000 m<sup>2</sup> em Indaiatuba, localizada estrategicamente no interior paulista. Nesse novo local, a empresa investiu fortemente na parte fabril e agregou as linhas Volvo, VW, MWM, Cummins e Iveco.

Com amplo espaço fabril e novos nichos de mercado se abrindo, em 2003 a Cipec inovou mais uma vez, implantando uma completa linha de servos de embreagem, válvulas e reparos de freios para linha pesada. Surgiu então a NTI, uma marca Cipec que em pouco tempo ficaria conhecida no mercado, oferecendo um produto competitivo e altamente confiável.

Atualmente, a Cipec conta com mais de 170 colaboradores e comercializa mais de 22.000 itens a partir de sua unidade fabril localizada em Indaiatuba, ampliando ainda mais sua capacidade de produção e expedindo mais de 30 toneladas de produtos por dia para mais de 50 países em todo o mundo.

Cipec began its activities in 1983 in the city of São Caetano as a small distributor and manufacturer of spare parts for trucks and buses. Working with dedication and seriousness, Cipec quickly expanded its range of distribution products and soon achieved national reference status in the replacement market for the Scania line.

By 1999, its structure could no longer accommodate the growing pace of business, prompting Cipec to transfer its operations to a 20,000 m<sup>2</sup> area in Indaiatuba, strategically located in the interior of São Paulo. Strong investments were made in the manufacturing sector, and the Volvo, VW, MWM, Cummins, and Iveco lines were added.

With ample manufacturing space and new market niches emerging, Cipec innovated once again in 2003, introducing a complete line of clutch servos, valves, and brake repair kits for heavy-duty applications. Thus, NTI was born, a Cipec brand that quickly became known in the market, offering competitive and highly reliable products.

Today, Cipec employs over 170 employees and sells over 22,000 items from its manufacturing facility located in Indaiatuba, further increasing its production capacity and shipping over 30 tons of products per day to more than 50 countries worldwide.

La Cipec inició sus actividades en 1983 en la ciudad de São Caetano como un pequeño distribuidor y fabricante de repuestos para camiones y autobuses. Trabajando con dedicación y seriedad, Cipec amplió rápidamente su gama de productos de distribución y pronto alcanzó el estatus de referencia nacional en el mercado de repuestos para la línea Scania.

Para 1999, su estructura ya no podía soportar el creciente ritmo de negocios, lo que llevó a Cipec a trasladar sus operaciones a una área de 20,000 m<sup>2</sup> en Indaiatuba, estratégicamente ubicada en el interior de São Paulo. Se realizaron fuertes inversiones en el sector manufacturero y se añadieron las líneas Volvo, VW, MWM, Cummins y Iveco.

Con un amplio espacio de fabricación y nuevos nichos de mercado emergentes, Cipec innovó una vez más en 2003, introduciendo una línea completa de servos de embrague, válvulas y reparaciones de frenos para aplicaciones de servicio pesado. Así nació NTI, una marca de Cipec que rápidamente se hizo conocida en el mercado, ofreciendo productos competitivos y altamente confiables.

Hoy en día, Cipec emplea a más de 170 trabajadores y vende más de 22,000 artículos desde su planta de fabricación ubicada en Indaiatuba, aumentando aún más su capacidad de producción y enviando más de 30 toneladas de productos al día a más de 50 países en todo el mundo.



SCANIA	3
COXIM	3
VOLVO	6
COXIM	6
VW	7
COXIM	7
FORD	8
COXIM	8
IVECO	9
COXIM	9
AGRALE	10
COXIM	10
DAF	11
COXIM	11
CONTATOS	12
ÍNDICE POR CÓDIGO	13

SCANIA	3
RUBBER MOUNTING	3
VOLVO	6
RUBBER MOUNTING	6
VW	7
RUBBER MOUNTING	7
FORD	8
RUBBER MOUNTING	8
IVECO	9
RUBBER MOUNTING	9
AGRALE	10
RUBBER MOUNTING	10
DAF	11
RUBBER MOUNTING	11
CONTACTS	12
INDEX BY CODE	13

## 1.01 COXIM

### RUBBER MOUNTING

#### 1116362 STEM AIR SUSPENSION

COXIM SUPORTE SUSP. AR CABINE 113  
006169



T113 / P93 /

#### 128328 BEARING SIDE BUFFER

COXIM LAT. MANC. 120016 FX DIANT.  
000173



/ L75 / L76

#### 1322341 LEAF SPRING STOPPER LH

BATENTE FEIXE MOLA L.E. S.4  
010180



114 / 124 / 164 / P.G.R. / 94 /

#### 1336882 ENGINE REAR MOUNT 94/

COXIM TRASEIRO MOTOR 94/114/124  
003473  
1371725



114 / 124 / 164 / K124 / 94 / K94 /

#### 1336885 FRONT ENGINE BUFFER 94/

COXIM DIANT. MOTOR 2 FUROS C/PINO GUIA  
005290  
1475868  
1423012  
1371729



114 / 124 / 164 / K124 / 94 /

#### 1341110 MOUNT

COXIM SUPORTE DEFLETOR FRONTAL 124  
009782



114 / 124 / 164 / 94 /

#### 1343100 SHOCK ABSORBER

COXIM SUSP. CABINE 94/114/124/164  
007796



110 / 114 / 124 / 164 / P.G.R. / 94 /

#### 1349805 CAB SUSP. BRACKET

COXIM SUPORTE SUSP. CABINE 94/114/124  
004348  
2470166  
2154867  
1923654



114 / 124 / 164 / P.G.R. / 94 /

#### 1349810 CAB SUSP. BRACKET

COXIM SUPORTE SUSP. CABINE 94/114/124  
004349



114 / 124 / 164 / P.G.R. / 94 /

#### 1349810 PU CABIN SUSP. BRACKET

COXIM SUPORTE SUSP. CABINE 94/114/124 =  
025576



114 / 124 / 164 / 94 /

#### 1353959 FRONT SUSPENSION

COXIM SUSPENSÃO CAPO DIANT. 114/124  
006177



114 / 124 / 164 /

#### 135583 CAB UPPER BUFFER

COXIM SUPERIOR CABINE  
000224



/ L75 / L76 / 110

#### 1357380 CAB CYLINDER BUFFER 94/

COXIM CILINDRO BASC. CABINE 94/114/124  
006220



114 / 124 / 164 / P.G.R. / 94 /

#### 1357381 CAB CYLINDER BUFFER 94/

COXIM CILINDRO BASC. CABINE 94/114/124  
006196



114 / 124 / P.G.R. / 94 /

#### 1363634 RADIATOR SUSPENSION

COXIM SUSPENSÃO RADIADOR 94/114/124  
006096



114 / 124 / 164 / K124 / 94 / F94 / K94 /

#### 1370141 REAR AXLE RUBBER

COXIM MOLA EIXO TANDEM S.4 - TODOS  
011440



114 / 124 / 164 / P.G.R. / 94 /

#### 1370142 BUMP STOP

COXIM SUPORTE FEIXE MOLA S.4  
010189



/ 94 / 114 / 124 / 164 / P.G.R.

#### 1372432 FRONT SUSPENSION CAB 2

COXIM SUP. SUSP. CAB. 2 PONTAS DIANT.  
006179



114 / 124 / 164 / P.G.R. / 94 /

#### 1388070 GEAR BOX ABSORBER

COXIM TUBO REFRIG. CX. CAMBIO 94/114/24/  
007871



114 / 124 / 164 / P.G.R. / 94 /

#### 138849 RUBBER MOUNTING REAR

COXIM TRASEIRO MOTOR 111  
000239



L75 / L76 / 110 / 111 /

#### 1397568 FRONT GRLL PANEL

COXIM PAINEL GRADE FRONTAL 94/114/24/64  
009798



114 / 124 / 164 / P.G.R. / 94 /

#### 140320 RADIATOR SHELL MOUTING

COXIM MASCARA RAD. 110/111  
000272



L75 / L76 / 110 / 111 /

#### 1424068 SUSPENSION BONNET

COXIM SUSPENSÃO CAPO SERIE 4  
006224  
1422942



114 / 124 / 164 /

#### 1427926 BUFFER 114/124

COXIM TRAMBULADOR 114/124  
006187  
1514089



114 / 124 / 164 / P.G.R. / 94 /

**1.01 COXIM**
**RUBBER MOUNTING**
**146526 ENGINE FRONT MOUNTING**

 COXIM DIANT. MOTOR 110/111 ROSCA 12MM  
000342


L75 / L76 / 110 / 111 / T113 / R113 / R143 / 124 /

**1469287 GEAR BOX MOUNTING P.G.**

COXIM TRASEIRO MOTOR PGR S.5

 014082  
1921972  
1782203  
1779609


114 / 124 / 164 / P.G.R. / K124 / 94 / K94 /

**1496288 R ENGINE FRONT MOUNTING =**

COXIM DIANT. MOTOR =3FUROS= S.4 =

 024596  
1778532 R  
1778530 R  
1496749 R  
1469277 R  
1423011 R

**150194 REAR CABINE BUFFER**

 COXIM TRASEIRO CABINE  
000356


L75 / L76 / 110 / 111 /

**1518460 RADIATOR MOUNT S4**

COXIM DEFLETOR RADIADOR S.4

 016897  
1772442


114 / 124 / P.G.R. / 94 /

**165332 SUP. CAB BUFFER 112**

COXIM INFERIOR CABINE 112

 000431  
347245


L75 / L76 / 110 / 111 / T112 / T113 / T142 /

**165337 LOWER CABIN MOUNTING**

COXIM SUPERIOR CABINE

 000433  
347241


L75 / L76 / 110 / 111 / T112 / T113 / T142 /

**211694 GEAR BOX BUFFER 110/111**

COXIM CAMBIO 110/111

 000756  
177834


LK141 / LK140 / 110 / 111 /

**2592761 GEAR BOX MOUNTING NTG**

COXIM CAMBIO NTG L.P.G.R.S

 025728  
2222211


P.G.R.S. / NTG /

**2592762 GEAR BOX MOUNTING NTG**

COXIM TRAS. CAMBIO NTG L.P.G.R.S DC 16

 026920  
2222212

**2611113 FRONT ENGINE MONTING**

COXIM DIANT. MOTOR NTG DC 16 V8

026922


**261115 FRONT ENGINE MONTING**

COXIM DIANT. MOTOR NTG DC 07/DC 09

026921


**2611116 FRONT ENGINE MONTING**

COXIM DIANT. MOTOR NTG (DUREZA 60

 025871  
2611114

**273793 RADIATOR RUBBER**

COXIM LATERAL RADIADOR 112

001127


 T112 / T113 / F113 / R113 / R112 / R142 / T142 /  
F112 / R143 / P93 /

**283296 CABINE SUSP. BUFFER 112**

COXIM SUSPENSÃO CABINE 112

001187



T112 / T113 / T142 /

**285248 AIR DUCT BUFFER 112**

COXIM DUTO AR 112

001209


 T112 / T113 / R113 / R112 / R142 / T142 / R143 /  
P93 /

**308604 RADIATOR BUFFER T112**

COXIM SUPORTE SUP. RAD. T112

001422


 T112 / T113 / F113 / R113 / R112 / R142 / T142 /  
F112 / R143 / P93 /

**319989 ENGINE HOOD BUFFER 112/**

COXIM BATENTE CAPO 112/3

 001505  
341403


T112 / T142 /

**329583 BONNET LOCK BUFFER 112**

COXIM FECHO CAPO 112

 001543  
305345


T112 / T113 / T142 /

**332738 ENGINE FRONT MOUNTING**

COXIM DIANT. MOTOR 112/3 =REFORCADO=

 000230  
137207

 T112 / T113 / F113 / R113 / K112 / R112 / R142 /  
T142 / F112 / K113 / R143 / L113 /

**348059 BONNET SEAL BUFFER 112**

COXIM ISOLADOR CAPO 112

 001578  
293547


T112 / T142 /

**361721 BONNET SEAL BUFFER 113**

COXIM ISOLADOR CAPO 113

 001613  
1358828  
1332090


T113 /

**385266 CAB AIR SUSP. BUFFER 113**

COXIM SUSPENSÃO AR CABINE 113

003038



T113 / R113 / R143 /

**390358 LOWER CABIN MOUNTING**

COXIM INFERIOR CABINE 113

001642



L75 / L76 / 110 / 111 / T112 / T113 / T142 /

## 1.01

## COXIM

### RUBBER MOUNTING

**390359**

CAB UPPER BUFFER 113

COXIM SUPERIOR CABINE 113  
001643



L75 / L76 / 110 / 111 / T112 / T113 / T142 /

**397308**

AIR RADIATOR BUFFER 113

COXIM RADIADOR AR 113  
004439  
1795583



T113 / R113 / R143 / 114 / 124 / 164 / P.G.R. / 94 /

**40607**

RUBBER MOUNTING

COXIM SILENCIOSO 111/2  
000048  
2355



L75 / L76 / LK141 / LK140 / 110 / 111 / T112 /  
T113 / F113 / R113 / K112 / R112 / R142 / T142 /

**523434**

ENGINE REAR MOUNTING

COXIM TRASEIRO MOTOR 112/3  
001725  
278599



T112 / T113 / F113 / R113 / K112 / R112 / R142 /  
T142 / F112 / K113 / R143 /

**2.01 COXIM**
**RUBBER MOUNTING**
**1096625 V CAB SUSP. BRACKET**

 COXIM SUSP. CABINA FH 12  
010125


FH16 / FH12 / FH16J /

**1130993 V ENGINE BRAKE MOUNTING**

 COXIM SUPORTE RETARDE B10/58  
009481


/ B58 / B10M / B7 / FS7 / B7F

**1573891 V ENGINE REAR BUFFER**

 COXIM TRAS. MOTOR N/L/F10/12 B-12B  
007779


N10 USA / NL12 / F12 /

**1576103 V GEARBOX BUFFER**

 COXIM CAMBIO  
002750


NL12 / NL10 / N10 / N12 / B12 /

**1611420 V FRONT ENGINE MOUNTING**

 COXIM DIANTEIRO MOTOR  
002748


/ NL12 / N10 USA

**1611789 V ENGINE HOOD BUFFER**

 COXIM CAPO  
004346

 FH16 / NL12 / N10 USA / NL10 / N10 / N12 / N12  
USA / FH12 / NL10 AUS. / NL12 AUS. / NL12 S /

**1622825 V ENGINE MOUNT FH/NH**

 COXIM DIANTEIRO MOTOR FH/NH  
010025  
20503551 V

 FH16 / FM10 / FH12 / FM12 / FH16J / NH12 /  
FH12J /

**1664970 V AIR DUCT BRACKET**

 COXIM SUPORTE DUTO AR FH12/NL12  
010457

 FH16 / FM10 / FM7 / F10 / F12 / F16 / FL10 / FL7 /  
FH12 / FM / FM12 / FM9 / FH16J / NH12 / FL12 /

**1665322 V RADIATOR MOUNTING FH/**

 COXIM INFERIOR RADIADOR FH/NH/FM  
009892

**20364891 V RADIATOR MOUNT FH/FM/NH**

 COXIM LAT. RADIADOR FH/FM/NH  
019522


FH16 / FH12 / FH / FM / FM12 / FM9 / NH12 / FE /

**20410142 V WIRE CABLE BOX**

 COXIM CAIXA CABOS/CHICOTE FH12 ATE  
012851


FH12 /

**20499469 V ENGINE REAR MOUNT D12D**

 COXIM TRASEIRO MOTOR D12D  
015032  
21228154 V  
21228153 V  
20723225 V  
20723224 V  
20499470 V


FH16 / FH12 / FH / FM / FM12 / NH12 /

**20747058 V FRONT ENGINE MOUNTING**

 COXIM BARRA DIANT. APOIO MOTOR FH12  
014394


FH / FM /

**20828767 V RADIATOR MOUNTING KIT 4**

 COXIM RADIADOR (KIT C/ 4) VM  
026105

**21416525 V GEARBOX REAR MOUNTING**

 COXIM TRAS. SUSP. CAMBIO FH/FM = FH <  
024342

**21997378 V FRONT ENGINE MOUNTING**

 COXIM DIANT. SUSP. MOTOR FH/FM = FH <  
024343  
21810944 V

**3154251 V RADIATOR MOUNTING FH/**

 COXIM RADIADOR FH/FM/NH  
019523


FH16 / FH12 / FH / FM / FM12 / FM9 / NH12 / FE /

**6793185 V CABIN MOUNTING N10/12NL**

 COXIM CABINE N10/12/NL  
004181

 NL12 / N10 USA / FE7 USA / NL10 / N10 / N12 /  
N12 USA / FS7 / FL6 / FL616 / FL619 / FL608 /

**8123691 V ENGINE HOOD HINGE**

 COXIM DOBRADICA CAPO NL10/12  
009786


/ NL10 / NL12



## 3.01 COXIM

### RUBBER MOUNTING

#### 2P0711026 GEAR LEVER MOUNTING

COXIM ALAVANCA CAMBIO  
018261



5.140 MWM DELIVERY / 8.150MWM DELIVERY /

#### T06199201 FRONT ENGINE BUFFER

COXIM DIANTEIRO MOTOR  
004482  
BD4T6038A



6.90 / 7.90S / 7.110S /

#### TJG899607 FRONT CAB BUFFER

COXIM DIANTEIRO CABINA  
004488  
2R0899413A



7.100 / 8.100 / 8.140 / 8.140CO / 8.140CE / L.80 /  
12.140T / 12.170BT / 12.180 / 14.150 / 14.170BT

## 4.01 COXIM

### RUBBER MOUNTING

#### E5HT5K371AA FRONT CAB BUFFER

COXIM DIANTEIRO CABINA

021999  
85HU5K371A  
8C455K371AA



815 / 1415CUM / 1317 / 1417 / 1215CUM / 1717 /  
1721 / 1421 / 1521 / 1617 / 2421 / 1722 / 1731 /

#### T06199201 FRONT ENGINE BUFFER

COXIM DIANTEIRO MOTOR

004482



F1000 / F4000

## 5.01 COXIM

### RUBBER MOUNTING

#### 41214451 RADIATOR MOUNT N.

COXIM RADIADOR N.STRALIS/TRAKKER  
015786



NOVO STRALIS / NOVO TRAKKER / TRAKKER / STRALIS /

#### 503102921 FRONT BUMPER SUPPORT

COXIM SUP. PARACHOQUE DIANT. STRALIS  
026110  
503349029



#### 5801762136 REAR ENGINE MOUNTING

COXIM TRASEIRO SUSP. MOTOR STRALIS/  
024425  
5801666554  
41272826  
41219895



#### 5801762138 FRONT ENGINE MOUNTING

COXIM DIANTEIRO SUSP. MOTOR N.STRALIS  
024426



#### 8141758 CABIN MOUNT EUROARGO/

COXIM SUSP. CABINE EUROARGO/TECTOR  
015790



EUROARGO /

#### 93826649 MUFFLER MOUNTING DAILY

COXIM SILENCIOSO DAILY  
016708



DAILY / DAILY/SCUDATO /

**6.01 COXIM**

**RUBBER MOUNTING**

**6001001008004** FRONT ENGINE

COXIM DIANT. MOTOR ROSCA 12MM  
024581



## 7.01

## COXIM

### RUBBER MOUNTING

#### 1806720

#### REAR UPPER MOUNTING

COXIM TRAS. SUP. MOTOR DAF CF85/95/105

026941  
1806721  
1378589  
1378588



#### 2013651

#### FRONT ENGINE MOUNTING

COXIM DIANT. MOTOR DAF CF85/95/105

026942  
2009135  
1806735  
1657422  
1638646



**Vendas / Sales:** vendas@cipec.com.br  
**Geral / General:** cipec@cipec.com.br  
**Televendas / Phone:** +55 19 3834-9822  
**Fax / Fax:** 0800.707.9822  
**www.cipec.com.br**

40607	5
128328	3
135583	3
138849	3
140320	3
146526	4
150194	4
165332	4
165337	4
211694	4
273793	4
283296	4
285248	4
308604	4
319989	4
329583	4
332738	4
348059	4
361721	4
385266	4
390358	4
390359	5
397308	5
523434	5
1116362	3
1322341	3
1336882	3
1336885	3
1341110	3
1343100	3
1349805	3
1349810	3
1349810 PU	3
1353959	3
1357380	3
1357381	3
1363634	3
1370141	3
1370142	3
1372432	3
1388070	3
1397568	3
1424068	3
1427926	3
1469287	4
1496288 R	4
1518460	4
2592761	4
2592762	4
2611113	4
2611115	4
2611116	4

1096625 V	6
1130993 V	6
1573891 V	6
1576103 V	6
1611420 V	6
1611789 V	6
1622825 V	6
1664970 V	6
1665322 V	6
3154251 V	6
6793185 V	6
8123691 V	6
20364891 V	6
20410142 V	6
20499469 V	6
20747058 V	6
20828767 V	6
21416525 V	6
21997378 V	6



2P0711026	7
T06199201	7
TJG899607	7



E5HT5K371AA 8  
T06199201 8

8141758	9
41214451	9
93826649	9
503102921	9
5801762136	9
5801762138	9



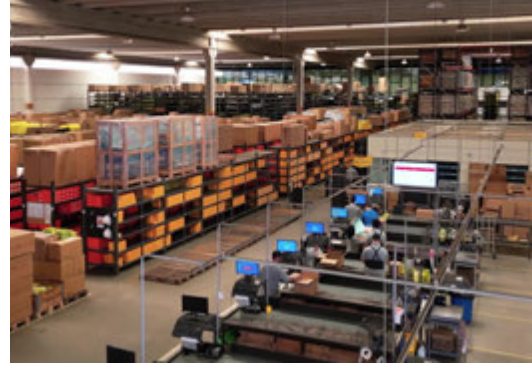
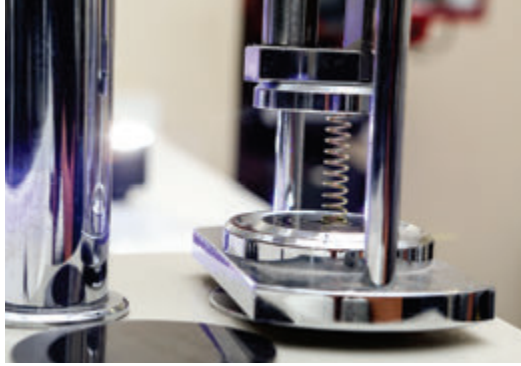


# ORIGINAL CODE AGRALE

6001001008004

10







[www.cippec.com.br](http://www.cippec.com.br)

EMPRESA CERTIFICADA  
CERTIFIED COMPANY **ISO 9001:2015**

## Conheça toda nossa Linha de Produtos

- **Scania**
- **Volvo**
- **Iveco**
- **VW**
- **Mercedes**
- **Freios**



**GRUPOCIPEC**