



**CUICAS**  
*SPRING BRAKE*  
*2025*

[www.ntifreios.com.br](http://www.ntifreios.com.br)

EMPRESA CERTIFICADA  
CERTIFIED COMPANY **ISO 9001:2015**

A Cipec iniciou suas atividades em 1983 na cidade de São Caetano como um pequeno distribuidor e fabricante de peças de reposição para caminhões e ônibus. Trabalhando com empenho e seriedade, a Cipec rapidamente ampliou seu leque de produtos de distribuição, alcançando logo em seguida o status de referência nacional no mercado de reposição da linha Scania.

Em 1999, devido ao ritmo crescente dos negócios, a estrutura da Cipec já não comportava a demanda, levando a empresa a transferir suas atividades para uma área de 20.000 m<sup>2</sup> em Indaiatuba, localizada estrategicamente no interior paulista. Nesse novo local, a empresa investiu fortemente na parte fabril e agregou as linhas Volvo, VW, MWM, Cummins e Iveco.

Com amplo espaço fabril e novos nichos de mercado se abrindo, em 2003 a Cipec inovou mais uma vez, implantando uma completa linha de servos de embreagem, válvulas e reparos de freios para linha pesada. Surgiu então a NTI, uma marca Cipec que em pouco tempo ficaria conhecida no mercado, oferecendo um produto competitivo e altamente confiável.

Atualmente, a Cipec conta com mais de 170 colaboradores e comercializa mais de 22.000 itens a partir de sua unidade fabril localizada em Indaiatuba, ampliando ainda mais sua capacidade de produção e expedindo mais de 30 toneladas de produtos por dia para mais de 50 países em todo o mundo.

Cipec began its activities in 1983 in the city of São Caetano as a small distributor and manufacturer of spare parts for trucks and buses. Working with dedication and seriousness, Cipec quickly expanded its range of distribution products and soon achieved national reference status in the replacement market for the Scania line.

By 1999, its structure could no longer accommodate the growing pace of business, prompting Cipec to transfer its operations to a 20,000 m<sup>2</sup> area in Indaiatuba, strategically located in the interior of São Paulo. Strong investments were made in the manufacturing sector, and the Volvo, VW, MWM, Cummins, and Iveco lines were added.

With ample manufacturing space and new market niches emerging, Cipec innovated once again in 2003, introducing a complete line of clutch servos, valves, and brake repair kits for heavy-duty applications. Thus, NTI was born, a Cipec brand that quickly became known in the market, offering competitive and highly reliable products.

Today, Cipec employs over 170 employees and sells over 22,000 items from its manufacturing facility located in Indaiatuba, further increasing its production capacity and shipping over 30 tons of products per day to more than 50 countries worldwide.

La Cipec inició sus actividades en 1983 en la ciudad de São Caetano como un pequeño distribuidor y fabricante de repuestos para camiones y autobuses. Trabajando con dedicación y seriedad, Cipec amplió rápidamente su gama de productos de distribución y pronto alcanzó el estatus de referencia nacional en el mercado de repuestos para la línea Scania.

Para 1999, su estructura ya no podía soportar el creciente ritmo de negocios, lo que llevó a Cipec a trasladar sus operaciones a una área de 20,000 m<sup>2</sup> en Indaiatuba, estratégicamente ubicada en el interior de São Paulo. Se realizaron fuertes inversiones en el sector manufacturero y se añadieron las líneas Volvo, VW, MWM, Cummins y Iveco.

Con un amplio espacio de fabricación y nuevos nichos de mercado emergentes, Cipec innovó una vez más en 2003, introduciendo una línea completa de servos de embrague, válvulas y reparaciones de frenos para aplicaciones de servicio pesado. Así nació NTI, una marca de Cipec que rápidamente se hizo conocida en el mercado, ofreciendo productos competitivos y altamente confiables.

Hoy en día, Cipec emplea a más de 170 trabajadores y vende más de 22,000 artículos desde su planta de fabricación ubicada en Indaiatuba, aumentando aún más su capacidad de producción y enviando más de 30 toneladas de productos al día a más de 50 países en todo el mundo.



# ÍNDICE POR TIPO DE PEÇAS



WABCO	03
CUICAS	03
KNORR	16
CUICAS	16
VARGA	23
CUICAS	23
BENDIX	24
CUICAS	24
DIVERSOS	27
CUICAS	27
CONTATOS	33
ÍNDICE POR CÓDIGO PRIMÁRIO	34
ÍNDICE POR CÓDIGO NTI	39





## PART TYPES INDEX

WABCO	03
SPRING BRAKE	03
KNORR	16
SPRING BRAKE	16
VARGA	23
SPRING BRAKE	23
BENDIX	24
SPRING BRAKE	24
DIVERSOS	27
SPRING BRAKE	27
CONTACTS	33
PRIMARY INDEX CODE	34
NTI INDEX CODE	39



CUICAS

SPRING BRAKE

WABCO: 4213051210

CIL. AMPLIFICADOR FREIO =MBB ANTIGO 1113/1513=

BRAKE BOOSTER CYLINDER 1113/1513

NTI: 016612  
 MERCEDES: 3644317014  
 NTI: 022568



MERCEDES | L1113 | L1313 | L1316 | L1318 | L1513 | L1514 | L1516 | L1517 | L1519 | L2013 | L2216 | L2219 | LK1313 | LK1316 | LK1513 | LK1519 | LK2013 | LK2216 | LK2219 | LS1313 | LS1316 | LS1513 | LS1519 | LS2013 | LS2216 | LS2219 | O355 | O362 | O364 | O365 | OF1313 | OF1316 | OF1517 | OH1313 | OH1316 | OH1419 | OH1517

WABCO: 4254462504

ASSENTO MOLA CUICA FREIO TRAS. =TIPO "G"=

BRAKE CHAMBER SPRING SEAT REAR

NTI: 013320  
 NTI: 023495 / 023496



SCANIA | 114 | 124 | 164 | 94 | F113 | F94 | K113 | K114 | K124 | K94 | P93 | R113 | R143 | T113 | VOLVO | B10M | B10R | B12 | FH12 | FM10 | FM12 | NH12 | NL10 | NL12

CILINDRO TRISTOP TIPO "G"  
 BRAKE CHAMBER STRISTOP (G)

WABCO: 4213056502

BLANK TAMPA COMPLETA CILINDRO

CYLINDER COVER

NTI: 016560



MERCEDES | 1113 | 1313 | 1316 | 1318 | 1513 | 1514 | 1516 | 1517 | L1113 | L1313 | L1316 | L1318 | L1513 | L1514 | L1516 | L1517 | L1519 | L2013 | L2216 | L2219 | LK1313 | LK1316 | LK1513 | LK1519 | LK2013 | LK2216 | LK2219 | LS1313 | LS1316 | LS1513 | LS1519 | LS2013 | LS2216 | LS2219 | O355 | O362 | O364 | O365 | OF1313 | OF1316 | OF1517 | OH1313 | OH1316 | OH1419 | OH1517

CIL. AMPLIFICADOR FREIO =MBB  
 ANTIGO 1113/1513=  
 BRAKE BOOSTER CYLINDER 1113/  
 1513

## CUICAS

## SPRING BRAKE

WABCO: 4213050162

CARCACA CAMARA AUXILIAR WABCO

AUXILIARY BRAKE CHAMBER HOUSING WABCO TYPE

NTI: 011572



MERCEDES | 1113 | 1313 | 1316 | 1318 | 1513 | 1514 | 1516 | 1517 | L1113 | L1114 | L1313 | L1316 | L1318 | L1513 | L1514 | L1516 | L1517 | L1519 | L2013 | L2216 | L2219 | LA1113 | LAK1113 | LK1113 | LK1114 | LK1313 | LK1316 | LK1513 | LK1519 | LK2013 | LK2216 | LK2219 | LS1113 | LS1114 | LS1313 | LS1316 | LS1513 | LS1519 | LS2013 | LS2216 | LS2219 | O355 | O362 | O364 | O365 | OF1313 | OF1316 | OF1517 | OH1313 | OH1316 | OH1419 | OH1517

CIL. AMPLIFICADOR FREIO = MBB  
ANTIGO 1113/1513=  
BRAKE BOOSTER CYLINDER 1113/  
1513

WABCO: 8993812844

FILTRO SINTERIZADO

FILTER

NTI: 017555



FORD | 4532E | IVECO | CAVALLINO | STRALIS | SCANIA | 114 | 124 | 164 | 94 | F94 | K114 | K124 | K94 | L94 | P.G.R. | VOLVO | VM 310 | VW | 17.180 | 17.220 | 17.250E | 17.250E  
CONSTELLATION | 18.310 | 19.320E

CILINDRO TRISTOP BAIONETA  
TRISTOP BRAKE CHAMBER

WABCO: 9254646014

FLANGE CUICA BAIONETA (16X24) ROSCA M16X1,5

BRAKE CHAMBER FLANGE (16X24)THREAD M16X1,5

NTI: 023175



MERCEDES | 1938S | 1944S | LS1938

CILINDRO TRISTOP BAIONETA  
TRISTOP BRAKE CHAMBER

CUICAS

SPRING BRAKE

WABCO: 9254606044

FLANGE CUICA BAIONETA (20X24) ROSCA M22X1,5

BRAKE CHAMBER FLANGE (20X24)M22X1,5

NTI: 023176



SCANIA | 114 | 124 | 164 | 94 | F113 | K113 | K114 | K124 | K94 | L113 | P.G.R. | R113 | R143 | T113

CILINDRO TRISTOP BAIONETA  
TRISTOP BRAKE CHAMBER

WABCO: 8797532604

GUARDA PO CIL. TRISTOP =2FUROS=

DUST COVER 2 HOLES

NTI: 006907

NTI: 023292

WABCO: 8977532614



MERCEDES | 1214 | 1214K | 1218 | 1318 | 1414 | 1414K | 1418 | 1418K | 1420 | 1714 | 1715 | 1718 | 1720 | ATEGO1728 | ATEGO2428 | L1113 | L1114 | L1214 | L1218 | L1313 | L1314 | L1316 | L1317 | L1318 | L1414 | L1418 | L1418 E | L1513 | L1514 | L1516 | L1517 | L1518 | L1519 | L1520 | L1618 | L1620 | L1622 | L2013 | L2014 | L2213 | L2214 | L2216 | L2217 | L2218 | L2219 | L2220 | L2314 | L2318 | L2325 | L2414 | L2418 | L2425 | L2638 | LA2425 | LB2213 | LB2214 | LB2216 | LB2217 | LB2218 | LB2219 | LB2220 | LB2318 | LB2325 | LB2418 | LB2425 | LG1819 | LK1113 | LK1114 | LK1214 | LK1313 | LK1314 | LK1316 | LK1317 | LK1318 | LK1414 | LK1418 | LK1513 | LK1514 | LK1516 | LK1517 | LK1518 | LK1519 | LK1520 | LK1614 | LK1618 | LK2213 | LK2214 | LK2216 | LK2217 | LK2218 | LK2219 | LK2220 |

CILINDRO TRISTOP TIPO "F"  
TRISTOP BRAKE CHAMBER F TYPE

WABCO: 8977510104

GUARDA PO CIL. TRISTOP =WABCO=

BRAKE CHAMBER TRISTOP DUST COVER

NTI: 006908

NTI: 023311 / 023312



MERCEDES | 1414 | 1414K | 1418 | 1418K | 1420 | 1714 | 1714K | 1715 | 1718 | 1718K | 1718M | 1720 | 1725 | ATEGO1728 | ATEGO2428 | L1414 | L1418 | L1418 E | L1513 | L1514 | L1516 | L1517 | L1518 | L1618 | L1620 | L1621 | L2013 | L2014 | L2213 | L2214 | L2216 | L2217 | L2218 | L2219 | L2220 | L2314 | L2318 | L2325 | L2414 | L2418 | L2635 | LA1313 | LA1314 | LA1418 | LAK1313 | LAK1314 | LAK1418 | LB2213 | LB2214 | LB2216 | LB2217 | LB2218 | LB2219 | LB2220 | LB2318 | LB2325 | LB2418 | LG1819 | LK1414 | LK1418 | LK1513 | LK1514 | LK1516 | LK1517 | LK1518 | LK1618 | LK1621 | LK2213 | LK2214 | LK2216 | LK2217 | LK2218 | LK2219 | LK2220 | LK2318 | LK2325 | LK2418 | LK2635 | LS1630 | LS1924 | LS1924 A | LS1929 (FASE I) | LS1929 (FASE II) | LS1932 | LS1933 | LS1934 | LS2635 | O370

CILINDRO TRISTOP TIPO "F"  
TRISTOP BRAKE CHAMBER F TYPE

## CUICAS

## SPRING BRAKE

WABCO: 9259076282

HASTE MENOR SERV. CAM. TRISTOP TIPO 16

ROD TRISTOP CHAMBER PISTON TYPE 16

NTI: 011279



MERCEDES | 1725 | O370 RSD | O500 R | O500 RSD | OH1418 | OH1521

CILINDRO TRISTOP TIPO "F"  
TRISTOP BRAKE CHAMBER F TYPE

WABCO: 8960269104

MOLA RETORNO PISTAO CILINDRO =WABCO=

SPRING

NTI: 018505

MERCEDES: 0014316493

NTI: 023511



MERCEDES | 1113 | 1313 | 1316 | 1318 | 1513 | 1514 | 1516 | 1517 | L1113 | L1313 | L1316 | L1318 | L1513 | L1514 | L1516 | L1517 | L1519 | L2013 | L2216 | L2219 | LK1313 | LK1316 | LK1513 | LK1519 | LK2013 | LK2216 | LK2219 | LS1313 | LS1316 | LS1513 | LS1519 | LS2013 | LS2216 | LS2219 | O355 | O362 | O364 | O365 | OF1313 | OF1316 | OF1517 | OH1313 | OH1316 | OH1419 | OH1517

CIL. AMPLIFICADOR FREIO =MBB  
ANTIGO 1113/1513=  
BRAKE BOOSTER CYLINDER 1113/  
1513

WABCO: 8960528604

MOLA SERVICO CAMARA TRISTOP 14X24

BRAKE CHAMBER DRIVE SPRING 14X24

NTI: 010498



MERCEDES | 1714 | 1714K | 1715 | 1718 | 1718K | 1720 | ATEGO1728 | ATEGO2428 | L1313 | L1314 | L1316 | L1317 | L1318 | L2013 | L2014 | L2213 | L2214 | L2215 | L2216 | L2217 | L2218 | L2219 | L2220 | L2225 | L2314 | L2315 | L2318 | L2325 | LA1313 | LA1314 | LA1418 | LAK1313 | LAK1314 | LAK1418 | LB2213 | LB2214 | LB2216 | LB2217 | LB2218 | LB2219 | LB2220 | LB2318 | LB2325 | LG1819 | LK1313 | LK1314 | LK1316 | LK1317 | LK1318 | LK2213 | LK2214 | LK2215 | LK2216 | LK2217 | LK2218 | LK2219 | LK2220 | LK2318 | LK2325 | LO814 | LS1313 | LS1314 | LS1316 | LS1317 | LS1318 | OF1313 | OF1314 | OF1315 | OF1318 | OF1417 | OH1313 | OH1314 | OH1315 | OH1316 | OH1317 | OH1318 | OH1419 | OH1420

CILINDRO TRISTOP TIPO "F"  
TRISTOP BRAKE CHAMBER F TYPE



CUICAS

SPRING BRAKE

WABCO: 8960528904

MOLA SERVICO CAMARA TRISTOP 16/24

BRAKE CHAMBER DRIVE SPRING 16X24

NTI: 010499

NTI: 023297 / 023298 / 023512



CILINDRO TRISTOP TIPO "F"  
TRISTOP BRAKE CHAMBER F TYPE

MERCEDES | 1414 | 1414K | 1418 | 1418K | 1714 | 1714K | 1715 | 1718K | 1718M | 1720 |  
L1414 | L1418 | L1418 E | L1513 | L1514 | L1516 | L1517 | L1518 | L1519 | L1520 | L1618 |  
L1620 | L1621 | L2013 | L2014 | L2213 | L2214 | L2216 | L2318 | L2325 | L2418 | LA1418 |  
LA2425 | LAK1418 | LB2213 | LB2214 | LB2216 | LB2217 | LB2218 | LB2219 | LB2220 |  
LB2318 | LB2325 | LB2418 | LB2425 | LG1819 | LK1414 | LK1418 | LK1513 | LK1514 | LK1516 |  
LK1517 | LK1518 | LK1519 | LK1520 | LK1618 | LK1621 | LK2213 | LK2214 | LK2216 |  
LK2217 | LK2218 | LK2219 | LK2220 | LK2318 | LK2325 | LK2418 | LK2425 | LS1519 | LS1520 |  
LS1524 | LS1525 | LS1625 | LS1630 | LS1924 | LS1924 A | LS1929 (FASE I) | LS1929 (FASE  
II) | LS1932 | LS1933 | LS1934 | LS1935 | LS1941 | O370 R | O370 RS | O370 RSD | O371 R |

WABCO: 8845380122

PARAF. DESATUADOR TRISTOP 135MM

SCREW BRAKE CHAMBER T24

NTI: 014131



CILINDRO TRISTOP TIPO "F"  
TRISTOP BRAKE CHAMBER F TYPE

MERCEDES | 1214 | 1214K | 1218 | L1214 | L1218 | L1313 | L1314 | L1316 | L1317 | L1318 |  
L1414 | L1418 | L1420 | L1513 | L1514 | L1516 | L1517 | L1518 | L1519 | L1520 | L1614 |  
L1618 | L1620 | L1621 | L1622 | L1624 | L1625 | L1634 | L1718 | L1720 | L1723 | L1924 |  
L1933 | L1934 | L1935 | L1938 | L1941 | L2013 | L2014 | L2213 | L2214 | L2215 | L2216 |  
L2217 | L2218 | L2219 | L2220 | L2225 | L2314 | L2315 | L2318 | L2323 | L2325 | L2414 |  
L2418 | LA1313 | LA1314 | LA1418 | LA2219 | LA2425 | LAK1313 | LAK1314 | LAK1418 |  
LK1214 | LK1218 | LK1313 | LK1314 | LK1316 | LK1317 | LK1318 | LK1414 | LK1418 | LK1513 |  
LK1514 | LK1516 | LK1517 | LK1518 | LK1519 | LK1520 | LK1614 | LK1618 | LK1620 |  
LK1621 | LK1625 | LK1935 | LK1941 | LK2213 | LK2214 | LK2215 | LK2216 | LK2217 | LK2218 |

WABCO: 8845001272

PARAF. DESATUADOR 145MM TIPO 30

SCREW BRAKE CHAMBER T30

NTI: 014130



CILINDRO TRISTOP TIPO "F"  
TRISTOP BRAKE CHAMBER F TYPE

FORD | 1630 | 3224 | 4030 | MERCEDES | L1418 | L1420 | L1513 | L1514 | L1516 | L1517 |  
L1518 | L1519 | L1520 | L1614 | L1618 | L1620 | L1621 | L1622 | L1624 | L1625 | L1634 |  
L1718 | L1720 | L1723 | L1924 | L1933 | L1934 | L1935 | L1938 | L1941 | L2013 | L2014 |  
L2213 | L2214 | L2215 | L2216 | L2217 | L2218 | L2219 | L2220 | L2225 | L2314 | L2315 |  
L2318 | L2323 | L2325 | L2414 | L2418 | L2425 | L2635 | LS1924 | LS1929 | LS1930 | LS1932 |  
LS1933 | LS1934 | LS1935 | LS1941 | O370 | O371 | O400 | OH1418 | OH1420 | VW | 16.300 |  
17.220 | 35.300

## CUICAS

## SPRING BRAKE

WABCO: REP010784

PINO HASTE CAMARA TRISTOP =WABCO=

PIN BRAKE CHAMBER WABCO

NTI: 010784



CILINDRO TRISTOP TIPO "F"  
TRISTOP BRAKE CHAMBER F TYPE

WABCO: T06698695

REP. CIL. ACUMUL. MOLA =WABCO=

BRAKE CHAMBER R. KIT WABCO TYPE

NTI: 004138

NTI: 009557



CIL. ESTACIONAMENTO  
STOP CYLINDER

VW | 6.90 | 7.110S | 7.90S

WABCO: 4213050022

REP. CIL. AMPLIFIC. (CAMARA AUX.)

REPAIR KIT CHAMBER

NTI: 012414

NTI: 023112



CIL. AMPLIFICADOR FREIO =MBB  
ANTIGO 1113/1513=  
BRAKE BOOSTER CYLINDER 1113/  
1513

MERCEDES | L1113 | L1313 | L1316 | L1318 | L1513 | L1514 | L1516 | L1517 | L1519 | L2013  
| L2216 | L2219 | LK1313 | LK1316 | LK1513 | LK1519 | LK2013 | LK2216 | LK2219 | LS1313 |  
LS1316 | LS1513 | LS1519 | LS2013 | LS2216 | LS2219 | O355 | O362 | O364 | O365 | OF1313  
| OF1316 | OF1517 | OH1313 | OH1316 | OH1419 | OH1517

CUICAS

SPRING BRAKE

WABCO: 1953864 PG

REP. CIL. FREIO TRISTOP 24X30 =PARCIAL=

BRAKE CHAMBER REPAIR KIT 24/30 WABCO

NTI: 006959  
 NTI: 006994 / 009904  
 WABCO: 8845006312 PG / 9254200022  
 PG



CILINDRO TRISTOP TIPO "G"  
 BRAKE CHAMBER STRISTOP (G)

SCANIA | F113 | K113 | P93 | R113 | R143 | T113

WABCO: 0074205318

REP. CIL. TRISTOP 12/16 =EMERGENCIA=

BRAKE CHAMBER R. KIT 12X16 EMERGENCY

NTI: 006281  
 MERCEDES: 0004305160 / 0084201518 /  
 6944208218  
 NTI: 023044



CILINDRO TRISTOP TIPO "F"  
 TRISTOP BRAKE CHAMBER F TYPE

MERCEDES | 1214 | 1214K | 1218 | L1113 | L1114 | LK1113 | LK1114 | LO610 | LS1113 |  
 LS1114 | LS1630 | LS1935 | LS1941 | O370 | O370 RSD | O371 | O371 RSD | O400 | OF1113 |  
 OF1114

WABCO: 9253200012

REP. CIL. TRISTOP 14/24 E 16/24 =EMERGENCIA

BRAKE CHAMBER REPAIR KIT 14X24 16X24 =WABCO=

NTI: 004136  
 MERCEDES: 0024301560  
 NTI: 006511



CILINDRO TRISTOP TIPO "F"  
 TRISTOP BRAKE CHAMBER F TYPE

MERCEDES | 1214 | 1215 | 1217 | 1218 | 1313 | 1314 | 1315 | 1316 | 1317 | 1318 | 1319 | 1322 |  
 1413 | 1414 | 1417 | 1418 | 1419 | 1420 | 1513 | 1514 | 1516 | 1517 | 1518 | 1519 | 1520 | 1525 |  
 1614 | 1618 | 1620 | 1621 | 1622 | 1623 | 1634 | 1714 | 1715 | 1717 | 1718 | 1720 | 1721 | 1722 |  
 1723 | 1725 | 1726 | 1728 | 1813 | 1816 | 1924 | 1929 | 1930 | 1932 | 1933 | 1934 | 1935 | 1936 |  
 1938 | 1941 | 1944 | 2013 | 2014 | 2016 | 2017 | 2018 | 2038 | 2213 | 2214 | 2215 | 2216 | 2217 |  
 2218 | 2219 | 2314 | 2318 | 2323 | 2418 | 2423 | 2428 | 2533 | 2625 | 2629 | 2635 | L1313 |  
 L1314 | L1316 | L1317 | L1318 | L1414 | L1418 | L1420 | L1513 | L1514 | L1516 | L1517 |  
 L1518 | L1519 | L1520 | L1614 | L1618 | L1620 | L1621 | L1622 | L1624 | L1625 | L1634 |  
 L1718 | L1720 | L1723 | L1924 | L1938 | L2013 | L2014 | L2213 | L2214 | L2215 | L2216 |

## CUICAS

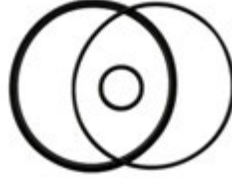
## SPRING BRAKE

WABCO: 9253200012 P

REP. CIL. TRISTOP 14/24 E 16/24 PARCIAL =(WABCO)

BRAKE CHAMBER TRISTOP PARTIAL R. KIT 14X/24 16X24

NTI: 011278  
 MERCEDES: 0025865242 P  
 NTI: 022795



CILINDRO TRISTOP TIPO "F"  
 TRISTOP BRAKE CHAMBER F TYPE

MERCEDES | 1214 | 1215 | 1217 | 1218 | 1313 | 1314 | 1315 | 1316 | 1317 | 1318 | 1319 | 1322  
 | 1413 | 1414 | 1417 | 1418 | 1419 | 1420 | 1513 | 1514 | 1516 | 1517 | 1518 | 1519 | 1520 | 1525 |  
 1614 | 1618 | 1620 | 1621 | 1622 | 1623 | 1634 | 1714 | 1715 | 1717 | 1718 | 1720 | 1721 | 1722 |  
 1723 | 1725 | 1726 | 1728 | 1813 | 1816 | 1924 | 1929 | 1930 | 1932 | 1933 | 1934 | 1935 | 1936 |  
 1938 | 1941 | 1944 | 2013 | 2014 | 2016 | 2017 | 2018 | 2038 | 2213 | 2214 | 2215 | 2216 | 2217 |  
 2218 | 2219 | 2314 | 2318 | 2323 | 2418 | 2423 | 2428 | 2533 | 2625 | 2629 | 2635 | L1313 |  
 L1314 | L1316 | L1317 | L1318 | L1414 | L1418 | L1420 | L1513 | L1514 | L1516 | L1517 |  
 L1518 | L1519 | L1520 | L1614 | L1618 | L1620 | L1621 | L1622 | L1624 | L1625 | L1634 |  
 L1718 | L1720 | L1723 | L1924 | L1938 | L2013 | L2014 | L2213 | L2214 | L2215 | L2216 |

WABCO: 9253240012

REP. CIL. TRISTOP 16/24 =SERVICO=

BRAKE CHAMBER R. KIT 16X24

NTI: 017462  
 NTI: 023321



CILINDRO TRISTOP TIPO "F"  
 TRISTOP BRAKE CHAMBER F TYPE

MERCEDES | L1513 | L1514 | L1516 | L1517 | L1518 | L1519 | L1520 | LK1513 | LK1514 |  
 LK1516 | LK1517 | LK1518 | LK1519 | LK1520 | LS1519 | LS1520 | OF1315 | OF1318 |  
 OH1520 | OH1523

WABCO: 9253200072

REP. CIL. TRISTOP 20/30 =SERVICO=

BRAKE CHAMBER REPAIR KIT 20X30

NTI: 017461  
 NTI: 023320  
 WABCO: 4231050012



CILINDRO TRISTOP TIPO "F"  
 TRISTOP BRAKE CHAMBER F TYPE

MERCEDES | 1414 | 1414K | 1418 | 1418K | 1420 | 1714 | 1714K | 1715 | 1718 | 1718K |  
 1718M | 1720 | 1725 | L1414 | L1418 | L1418 E | L1618 | L1620 | L1621 | L2314 | L2318 | L2414  
 | L2418 | L2635 | LA1418 | LAK1418 | LB2318 | LB2418 | LK1414 | LK1418 | LK1618 | LK1621  
 | LK2318 | LK2418 | LK2635 | LS1630 | LS1924 | LS1924 A | LS1929 (FASE I) | LS1929 (FASE  
 II) | LS1932 | LS1933 | LS1934 | LS2635 | O370 RSD | O500 R | O500 RSD | OH1418 | OH1521

CUICAS

SPRING BRAKE

WABCO: 9254310052

REP. CIL. TRISTOP 24/24 =SERVICO=

BRAKE CHAMBER REPAIR KIT 24X24 BIG TYPE

NTI: 018473  
NTI: 023323



SCANIA | 114 | 124 | 164 | 94 | F113 | K113 | L113 | P.G.R. | R113 | R143 | T113

CILINDRO TRISTOP TIPO "G"  
BRAKE CHAMBER STRISTOP (G)

WABCO: 1953864

REP. CIL. TRISTOP 24/30 =EMERG=

BRAKE CYLINDER REPAIR KIT 24/30 WABCO

NTI: 003591  
NTI: 006992 / 009902  
WABCO: 8845006312 / 9254200022



SCANIA | F113 | K113 | P93 | R113 | R143 | T113

CILINDRO TRISTOP TIPO "G"  
BRAKE CHAMBER STRISTOP (G)

WABCO: 1953864 PC

REP. CIL. TRISTOP 24/30 =EMERG= (PARCIAL)

BRAKE CHAMBER R. KIT 24/30 (PARTIAL) WABCO TYPE

NTI: 013219  
NTI: 022874 / 023719 / 023720 / 023721



SCANIA | F113 | K113 | P93 | R113 | R143 | T113

CILINDRO TRISTOP TIPO "G"  
BRAKE CHAMBER STRISTOP (G)

## CUICAS

## SPRING BRAKE

WABCO: 9253200022 P

REP. CIL. TRISTOP 30/30 =EMERG= (PARCIAL)

BRAKE CHAMBER REPAIR KIT 24/30 30/30 (EMERGENCY)

NTI: 018756  
NTI: 022796CILINDRO TRISTOP TIPO "F"  
TRISTOP BRAKE CHAMBER F TYPEVW | 16.300 | 17.250E | 17.250E CONSTELLATION | 19.320E CONSTELLATION | 19.370  
CONSTELLATION | 23.250E | 24.250E | 24.250ECONSTELLATION | 25.320  
CONSTELLATION | 25.370E CONSTELLATION | 35.300 | 35.300 LEITO | 40.300 | 40.300  
LEITO

WABCO: 9254320002

REP. CIL. TRISTOP 30/30 TIPO =G= SERVICIO

BRAKE CHAMBER REPAIR KIT 30/30 BIG TYPE

NTI: 018474

CILINDRO TRISTOP TIPO "G"  
BRAKE CHAMBER STRISTOP (G)

SCANIA | 114 | 124 | 164 | 94 | F113 | K113 | L113 | R113 | R143 | T113

WABCO: 9254612912

REP. CIL. TRISTOP BAIONETA T16 =EMERG=

BRAKE CHAMBER REPAIR KIT T16 W/SHAFT (EMERGENCY)

NTI: 014509

CILINDRO TRISTOP BAIONETA  
TRISTOP BRAKE CHAMBER

MERCEDES | AXOR2540 | AXOR2644 | LS1938

CUICAS

SPRING BRAKE

WABCO: 9254200042

REP. CIL. TRISTOP BAIONETA T24 =EMERG=

BRAKE CHAMBER REPIAR KIT W/ SHAFT T 24

NTI: 012016  
NTI: 023322



MERCEDES | 1938S | 1944S | AXOR1933 S | AXOR2035 | AXOR2040 | AXOR2044 | AXOR2533 | AXOR2540 | AXOR2544 | AXOR2640 | AXOR2644 | AXOR2825 | AXOR2828 | AXOR3340 | AXOR3344 | AXOR4140 | LS1622 | LS1938 | O500 | O500 M | O500 U | SCANIA | 114 | 124 | 164 | 94 | K114 | K124 | K94 | P.G.R. | VOLVO | B9S

CILINDRO TRISTOP BAIONETA  
TRISTOP BRAKE CHAMBER

WABCO: 8845035492

REP. CIL. TRISTOP BAIONETA T30 =EMERG=

BRAKE CHAMBER REPAIR KIT T30 W/SHAFT EMERGENCY

NTI: 012015  
NTI: 023510



FORD | 4532E | IVECO | CAVALLINO | STRALIS | MERCEDES | 1938S | 1944S | LS1938 | SCANIA | 114 | 124 | 164 | 94 | K114 | K124 | K94 | VOLVO | VM 310 | VW | 17.180 | 17.220 | 17.250E | 17.250E CONSTELLATION | 18.310 | 19.320E

CILINDRO TRISTOP BAIONETA  
TRISTOP BRAKE CHAMBER

WABCO: 1953874

REP. CIL. TRISTOP TIPO G 24 =EMERG=

BRAKE CHAMBER REPAIR KIT 14/24 16/24

NTI: 006960  
NTI: 006991



SCANIA | F113 | K113 | P93 | R113 | R143 | T113

CILINDRO TRISTOP TIPO "G"  
BRAKE CHAMBER STRISTOP (G)

## CUICAS

## SPRING BRAKE

WABCO: 1953874 P

REP. CIL. TRISTOP TIPO G 24 -EMERG= (PARCIAL)

BRAKE CHAMBER REPAIR KIT 24/24 (PARTIAL) WABCO

NTI: 006995  
NTI: 006997

SCANIA | F113 | K113 | P93 | R113 | R143 | T113

CILINDRO TRISTOP TIPO "G"  
BRAKE CHAMBER STRISTOP (G)

WABCO: 1953874 PG

REP. CIL. TRISTOP TIPO G 24 -EMERG= (PARCIAL)

BRAKE CHAMBER REPAIR KIT 24/24 (PARTIAL) WABCO

NTI: 006996  
NTI: 006998

SCANIA | F113 | K113 | P93 | R113 | R143 | T113

CILINDRO TRISTOP TIPO "G"  
BRAKE CHAMBER STRISTOP (G)

WABCO: 1953864 P

REP. PARCIAL CAMARA DE FREIO TRISTOP 24X30 WABCO

BRAKE CHAMBER REPAIR KIT 24/30 (PARTIAL) WABCO

NTI: 006886  
NTI: 006993 / 009903  
WABCO: 8845006312 P / 9254200022 P

SCANIA | F113 | K113 | P93 | R113 | R143 | T113

CILINDRO TRISTOP TIPO "G"  
BRAKE CHAMBER STRISTOP (G)



**CUICAS****SPRING BRAKE****WABCO: 9253200022**

REPARO CIL. TRISTOP 30/30 24/30

BRAKE CHAMBER REPAIR KIT 24/30 30/30 (EMERGENCY)

NTI: 006856  
NTI: 006883CILINDRO TRISTOP TIPO "F"  
TRISTOP BRAKE CHAMBER F TYPEVW | 16.300 | 17.250E | 17.250E CONSTELLATION | 19.320E CONSTELLATION | 19.370  
CONSTELLATION | 23.250E | 24.250E | 24.250ECONSTELLATION | 25.320  
CONSTELLATION | 25.370E CONSTELLATION | 35.300 | 35.300 LEITO | 40.300 | 40.300  
LEITO

KNORR: K005211

CUICA FREIO DIANTEIRO OH3736 /1938S

BRAKE CHAMBER FRONT OH 3736/1938S

NTI: 025203  
NTI: 025202

MERCEDES | 1938S | OH3736

KNORR: 4B54273

GUARDA PO CIL. COMBINADO KNORR (PR 45)

DUST COVER CYLINDER KNORR

NTI: 006909  
NTI: 023258CILINDRO TRISTOP  
BRAKE TRISTOP

MERCEDES | 1214 | 1218 | 1414 | 1418 | 1514 | 1518 | 1618 | 1714 | 1718 | 1718K | 1720 | 1723 | 2423B | 2423K | 2428 | ATEGO1315 | ATEGO1418 | L1113 | L1114 | L1118 | L1313 | L1314 | L1316 | L1318 | L1414 | L1418 | L1420 | L1513 | L1514 | L1516 | L1517 | L1518 | L1519 | L1520 | L1614 | L1618 | L1620 | L1621 | L1622 | L1625 | L2013 | L2213 | L2215 | L2216 | L2219 | LA1113 | LA1313 | LA2219 | LAK1113 | LAK1313 | LB2219 | LK1113 | LK1214 | LK1313 | LK1314 | LK1316 | LK1318 | LK1418 | LK1513 | LK1514 | LK1516 | LK1517 | LK1518 | LK1519 | LK1520 | LK1614 | LK1618 | LK1620 | LK1625 | LK2213 | LK2216 | LK2219 | LP2318 | LS1113 | LS1313 | LS1314 | LS1316 | LS1318 | LS1513 | LS1516 | LS1519 | LS1520 | LS1524 | LS1525 | LS1621 | LS2636 | O500 RDS | OF1313 | OF1318 | OF1417 E | OF1620 |

KNORR: 4B54273 X

GUARDA PO CIL. COMBINADO KNORR (PR 45)

DUST COVER BRAKE CHAMBER KNORR

NTI: 018989

CILINDRO TRISTOP  
BRAKE TRISTOP

MERCEDES | 1214 | 1218 | 1318 | 1414 | 1418 | 1514 | 1518 | 1520 | 1714 | 1718 | 1718K | 1720 | 1723 | 2423B | 2423K | 2428 | ATEGO1315 | ATEGO1418 | L1113 | L1114 | L1118 | L1313 | L1314 | L1316 | L1317 | L1318 | L1414 | L1418 | L1420 | L1513 | L1514 | L1516 | L1517 | L1518 | L1519 | L1520 | L1614 | L1618 | L1620 | L1621 | L1622 | L1625 | L2013 | L2213 | L2215 | L2216 | L2219 | LA1113 | LA1313 | LA1314 | LA2219 | LAK1113 | LAK1313 | LAK1314 | LB2219 | LK1113 | LK1214 | LK1313 | LK1314 | LK1316 | LK1317 | LK1318 | LK1418 | LK1513 | LK1514 | LK1516 | LK1517 | LK1518 | LK1519 | LK1520 | LK1614 | LK1618 | LK1620 | LK1625 | LK2213 | LK2216 | LK2219 | LP2318 | LS1113 | LS1316 | LS1317 | LS1318 | LS1513 | LS1516 | LS1519 | LS1520 | LS1524 | LS1525 | O500 RDS | OF1313 |

**CUICAS**
**SPRING BRAKE**
**KNORR: C65723**

GUARDA PO CUICA BAIONETA

BRAKE CHAMBER BOOT SHAT

 NTI: 022382  
 KNORR: Z004564


MERCEDES | 1938S | 1944S | ACCELO915C | LS1632 | LS1633 | LS1938 | O500 U

 CILINDRO COMBINADO  
 BRAKE CHAMBER KNORR TYPE

**KNORR: 1C575472**

MOLA CUICA FREIO TP KNORR BLINDADA 16X24

SPING FOR BRAKE CHAMBER

 NTI: 014671  
 KNORR: C575472  
 NTI: 023137

 MERCEDES | 1728 | 1944S | 2035S | 2040S | 2044S | 2423B | 2423K | 2533S | 2540S | 2644S  
 | 2726B | 2726K | ACCELO915C | AXOR1933 | AXOR2035 S | AXOR2040 S | AXOR2535 S |  
 AXOR2540 S | AXOR2640 S | AXOR2641 | AXOR2644 | AXOR2644 S | AXOR2831 |  
 AXOR3340 | AXOR3344 | AXOR4143 | AXOR4144 | L1634 | LS1633 | LS1634 | LS1938 | O500  
 M | O500 R | O500 RS | O500 RSD | O500 RSDD | O500 U | O500 UA | OF1519 | OF1721 |  
 OF1722 | OF1730

 CAMARA FREIO DUPLA 16X24  
 DOUBLE BRAKE CHAMBER 16X24

**KNORR: 4B51433**

MOLA DE SERVICIO TIPO 16

DRIVE SPRING TYPE 16

 NTI: 017355  
 NTI: 023262 / 023263

 MERCEDES | 1418 | 1418AK | 1514 | 1520 | 1718AK | 1718K | 1723 | 2423B | 2423K | 2428 |  
 2629 | ATEGO1315 | ATEGO1418 | L1418 | L1420 | L1513 | L1516 | L1519 | L1520 | L1614 |  
 L1618 | L1620 | L1621 | L1622 | L2013 | L2014 | L2213 | L2214 | L2216 | L2217 | L2218 |  
 L2219 | L2220 | L2314 | L2315 | L2318 | L2418 | L2425 | L909 | L911 | L912 | LA1418 | LA2219  
 | LA2425 | LAK1418 | LB2214 | LB2216 | LB2217 | LB2218 | LB2219 | LB2220 | LB2318 |  
 LB2418 | LB2425 | LK1418 | LK1513 | LK1519 | LK1520 | LK1618 | LK1620 | LK1621 | LK2213  
 | LK2214 | LK2216 | LK2217 | LK2218 | LK2219 | LK2220 | LK2318 | LK2418 | LK2425 | LO809  
 | LO811 | LS1513 | LS1516 | LS1519 | LS1520 | LS1524 | LS1525 | LS1621 | LS1625 | LS1630  
 | LS1634 | LS1924 | LS1924 A | LS1929 | LS1932 | LS1933 | LS1934 | LS1935 | LS1941 | O370

 CILINDRO TRISTOP  
 BRAKE TRISTOP

## CUICAS

## SPRING BRAKE

KNORR: Z006730

MOLA SERVICO CI.BLINDADO =20/24 =24/24 =

SERVICE SPRING FOR SEALED CLY. 20/24 24/24

NTI: 025724  
NTI: 025854CUICA FREIO DIANTEIRO OH3736 /  
1938S  
BRAKE CHAMBER FRONT OH 3736/  
1938SMERCEDES | 1728 | 1938S | ACCELO915C | AXOR1933 | AXOR2035 | AXOR2040 |  
AXOR2533 | AXOR2536 | AXOR2540 | AXOR2541 | AXOR2544 | AXOR2640 | AXOR2644 |  
AXOR2831 | AXOR3340 | AXOR3344 | O500 M | O500 R | O500 RS | O500 RSD | O500 U |  
O500 UA | OF1721 | OF1722 | OH3736

KNORR: 4B57677

MOLA SERVICO TIPO 16 =KNORR=

SERVICE SPRING TYPE 16

NTI: 017334  
NTI: 023259 / 023260 / 023261CILINDRO TRISTOP  
BRAKE TRISTOPMERCEDES | 1414 | 1418 | 1514 | 1518 | 1520 | 1714 | 1718 | 1718K | 1720 | 1723 | 2423B |  
2423K | 2428 | ATEGO1315 | ATEGO1418 | L1414 | L1418 | L1420 | L1513 | L1514 | L1516 |  
L1517 | L1518 | L1519 | L1520 | L1614 | L1618 | L1620 | L1621 | L1622 | L1625 | LK1418 |  
LK1513 | LK1514 | LK1516 | LK1517 | LK1518 | LK1519 | LK1520 | LK1614 | LK1618 | LK1620  
| LK1625 | LS1313 | LS1314 | LS1316 | LS1318 | LS1513 | LS1516 | LS1519 | LS1520 | LS1524  
| LS1525 | LS1621 | LS2636 | O500 RDS | OF1218 | OF1315 | OF1318 | OF1620 | OF1721 |  
OF1721 M | OH1313 | OH1315 | OH1316 | OH1317 | OH1318 | OH1418 | SCANIA | F112 |  
R112 | R113 | R142 | T112 | T113 | T142 | VOLVO | B10M

KNORR: II33767C

REP. CENTRAL CIL. BLINDADO

BRAKE CHAMBER REPAIR KIT

NTI: 018831

CILINDRO COMBINADO  
BRAKE CHAMBER KNORR TYPE

MERCEDES | 1938S | 1944S | ACCELO915C

**CUICAS**

**SPRING BRAKE**

**KNORR: II352771 EP**

REP. CIL. FREIO BLIND. PARCIAL (CARC.FERRO)

BRAKE CHAMBER CENTRAK REP. KIT 9W

NTI: 025874



MERCEDES | 1938 | 1944 | ACCELO915C | LS1633 | LS1938 | OF1418 | OF1722

CILINDRO COMBINADO  
BRAKE CHAMBER KNOOR TYPE

**KNORR: II352771 A**

REP. CIL. FREIO BLIND.C/GAXETA CENTRAL(CARC.ALUM.)

BRAKE CHAMBER CENTRAL REP. KIT W/SEALS

NTI: 013869  
KNORR: K002239001 A  
MERCEDES: 0184203118  
NTI: 023127



MERCEDES | 1938 | 1944 | 1944S | ACCELO915C | LS1633 | LS1938

CILINDRO COMBINADO  
BRAKE CHAMBER KNOOR TYPE

**KNORR: II352771 E**

REP. CIL. FREIO BLIND.C/GAXETA CENTRAL(CARC.FERRO)

BRAKE CHAMBER CENTRAK REP. KIT 9W

NTI: 023896  
KNORR: K119163 E



MERCEDES | 1938 | 1944 | ACCELO915C | LS1633 | LS1938 | OF1418 | OF1722

CILINDRO COMBINADO  
BRAKE CHAMBER KNOOR TYPE

## CUICAS

## SPRING BRAKE

KNORR: II352771 R

REP. CIL. FREIO BLINDADO =KNORR=

BRAKE CYLINDER REPAIR KIT

NTI: 026907



MERCEDES | 1938 | 1944 | ACCELO915C | LS1633 | LS1938

CILINDRO COMBINADO  
BRAKE CHAMBER KNOOR TYPE

KNORR: K11916360

REP. CIL. FREIO BLINDADO C/GAXETA CENTRAL

BRAKE CHAMBER CENTRAK REP. KIT 9W

NTI: 024700

MERCEDES | 1728 | AXOR1933 | AXOR2035 | AXOR2040 | AXOR2533 | AXOR2535 |  
AXOR2536 | AXOR2540 | AXOR2541 | AXOR2544 | AXOR2640 | AXOR2644 | AXOR2831 |  
AXOR3340 | AXOR3344 | O500 M | O500 R | O500 RS | O500 RSD | O500 U | O500 UA |  
OF1418 | OF1721 | OF1722CILINDRO COMBINADO  
BRAKE CHAMBER KNOOR TYPE

KNORR: II15183

REP. CIL. FREIO C/DIAFR. 12/16=

BRAKE CHAMBER REP. KIT W/ DIAPRAGM 12X16

NTI: 015596

KNORR: I90229

NTI: 023130

MERCEDES | 1218 | 1418 | 1418K | L1113 | L1114 | L1118 | L1218 | L1418 | L1418 E |  
LA1113 | LA1418 | LAK1113 | LAK1418 | LK1113 | LS1113CILINDRO TRISTOP  
BRAKE TRISTOP

**CUICAS**
**SPRING BRAKE**
**KNORR: I82914**

REP. CIL. FREIO C/DIAFR. KNORR =TIPO 16/24=

BRAKE CHAMBER REP. KIT W/ DIAPHRAGM 16X24

 NTI: 007206  
 KNORR: I82913 / I83581  
 NTI: 022656

 CILINDRO TRISTOP  
 BRAKE TRISTOP

 MERCEDES | 1414 | 1418 | 1514 | 1518 | 1520 | 1714 | 1718 | 1718K | 1720 | 1723 | 2423B |  
 2423K | 2428 | ATEGO1315 | ATEGO1418 | L1414 | L1418 | L1420 | L1513 | L1514 | L1516 |  
 L1517 | L1518 | L1519 | L1520 | L1614 | L1618 | L1620 | L1621 | L1622 | L1625 | LK1418 |  
 LK1513 | LK1514 | LK1516 | LK1517 | LK1518 | LK1519 | LK1520 | LK1614 | LK1618 | LK1620  
 | LK1625 | LS1313 | LS1314 | LS1316 | LS1318 | LS1513 | LS1516 | LS1519 | LS1520 | LS1524  
 | LS1525 | LS1621 | LS2636 | O500 RSD | OF1218 | OF1315 | OF1318 | OF1620 | OF1721 |  
 OF1721 M | OH1313 | OH1315 | OH1316 | OH1317 | OH1318 | OH1418

**KNORR: T06698695A**

REP. CIL. FREIO KNORR (ESTACIONARIO)

BRAKE CHAMBER REP. KIT (PARKING)

 NTI: 005850  
 NTI: 024371 / 024372

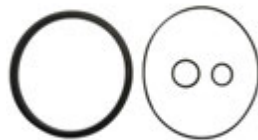
 CIL. ESTACIONAMENTO  
 STOP CYLINDER

VW | 6.90 | 7.110S | 7.90

**KNORR: I82914 PG**

REP. CIL. FREIO S/DIAFR. KNORR =TIPO 16/24=

BRAKE CHAMBER REP. KIT NO DIAPHRAGM 16X24

 NTI: 011277  
 KNORR: I82913 PG / I83581 PG  
 NTI: 022718

 CILINDRO TRISTOP  
 BRAKE TRISTOP

 MERCEDES | 1414 | 1418 | 1514 | 1518 | 1520 | 1714 | 1718 | 1718K | 1720 | 1723 | 2423B |  
 2423K | 2428 | ATEGO1315 | ATEGO1418 | L1414 | L1418 | L1420 | L1513 | L1514 | L1516 |  
 L1517 | L1518 | L1519 | L1520 | L1614 | L1618 | L1620 | L1621 | L1622 | L1625 | LK1418 |  
 LK1513 | LK1514 | LK1516 | LK1517 | LK1518 | LK1519 | LK1520 | LK1614 | LK1618 | LK1620  
 | LK1625 | LS1313 | LS1314 | LS1316 | LS1318 | LS1513 | LS1516 | LS1519 | LS1520 | LS1524  
 | LS1525 | LS1621 | LS2636 | O500 RSD | OF1218 | OF1315 | OF1318 | OF1620 | OF1721 |  
 OF1721 M | OH1313 | OH1315 | OH1316 | OH1317 | OH1318 | OH1418

## CUICAS

## SPRING BRAKE

KNORR: I82914 P

REP. CIL. FREIO S/DIAFR. KNORR =TIPO 24=

BRAKE CHAMBER REP. KIT NO DIAPHRAGM TYPE 24

NTI: 007491

KNORR: I82913 P / I83581 P / I85219 P

NTI: 009196 / 022716 / 023212


 CILINDRO TRISTOP  
 BRAKE TRISTOP

MERCEDES | 1414 | 1418 | 1514 | 1518 | 1520 | 1714 | 1718 | 1718K | 1720 | 1723 | 2423B | 2423K | 2428 | ATEGO1315 | ATEGO1418 | L1414 | L1418 | L1420 | L1513 | L1514 | L1516 | L1517 | L1518 | L1519 | L1520 | L1614 | L1618 | L1620 | L1621 | L1622 | L1625 | LK1418 | LK1513 | LK1514 | LK1516 | LK1517 | LK1518 | LK1519 | LK1520 | LK1614 | LK1618 | LK1620 | LK1625 | LS1313 | LS1314 | LS1316 | LS1318 | LS1513 | LS1516 | LS1519 | LS1520 | LS1524 | LS1525 | LS1621 | LS2636 | O500 RSD | OF1218 | OF1315 | OF1318 | OF1620 | OF1721 | OF1721 M | OH1313 | OH1315 | OH1316 | OH1317 | OH1318 | OH1418

KNORR: K02520002

REP. CIL. FREIO TIPO 24 (EMERGENCIA)

BRAKE CHAMBER REP. KIT TIPY 24 FOR EMERGENCY

NTI: 015686


 CILINDRO COMBINADO  
 BRAKE CHAMBER KNOOR TYPE

MERCEDES | 1016 NEW ACCELO | 1728 | 2035S | 2040S | 2044S | 2423B | 2423K | 2533S | 2540S | 2644S | 2726B | 2726K | 815 NEW ACCELO | ACCELO915C | AXOR1933 | AXOR2035 S | AXOR2040 S | AXOR2535 S | AXOR2540 S | AXOR2640 S | AXOR2644 S | AXOR2831 | AXOR3340 | AXOR3344 | AXOR4143 | AXOR4144 | L1634 | LO916 | LS1634 | LS2533 6X2 | O500 M | O500 R | O500 RDS | O500 RS | O500 RSD | O500 RSDD | O500 U | O500 UA | OF1218 | OF1418 | OF1519 | OF1721 | OF1722 | OF1730 | OH1313 | OH1315 | OH1316 | OH1317 | OH1318 | OH1418

KNORR: II15183 P

REP. CIL. S/DIAFR. =TIPO 12/16=

BRAKE CHAMBER REP. KIT T12/16 (NO DIAPHRAGM)

NTI: 015592

KNORR: I90229 P

NTI: 023133


 CILINDRO TRISTOP  
 BRAKE TRISTOP

MERCEDES | 1218 | 1418 | 1418K | L1113 | L1114 | L1118 | L1218 | L1418 | L1418 E | LA1113 | LA1418 | LAK1113 | LAK1418 | LK1113 | LS1113



CUICAS

SPRING BRAKE

VARGA: T13607965

MOLA INF. CUICA TRAS. VARGA

BRAKE CHAMBER LOWER SPRING

NTI: 005321



FORD | B1618 ONIBUS | B1621 ONIBUS | F12000 | F19000 | F7000 | VW | 11.130 | 13.130 | 14.140

CAMARA FREIO SPRING BRAKE  
24X30  
DOUBLE BRAKE CHAMBER 24X30

VARGA: SRFM00068

REP. CAM. DUPLA 24/30 (30/30)

BRAKE CHAMBER REPAIR KIT 24/30 30/30

NTI: 013005  
NTI: 023760



FORD | B1618 ONIBUS | B1621 ONIBUS | F12000 | F19000 | F7000 | VW | 11.130 | 13.130 | 14.140

CAMARA FREIO SPRING BRAKE  
24X30  
DOUBLE BRAKE CHAMBER 24X30

VARGA: SRFM0068P

REP. CAM. DUPLA CENTRAL =MOD.VARGA=

BRAKE CHAMBER CENTRAL REPAIR KIT VARGA TYPE

NTI: 017562



FORD | B1618 ONIBUS | B1621 ONIBUS | F12000 | F19000 | F7000 | VW | 11.130 | 13.130 | 14.140

CAMARA FREIO SPRING BRAKE  
24X30  
DOUBLE BRAKE CHAMBER 24X30

CUICAS

SPRING BRAKE

**BENDIX: 1953052**

MOLA SERVICO SPRING BRAKE 30

SERVICE SPRING TYPE 30

NTI: 007456



SCANIA | 111 | F112 | F113 | K112 | K113 | LK140 | LK141 | R112 | R113 | R142 | T112 | T113 | T142

CAMARA SPRING BRAKE 30  
BRAKE CHAMBER 30

**BENDIX: 203930**

MOLA SPRING BRAKE 30X30

BRAKE SPRING REAR

NTI: 000714

NTI: 003448 / 005327 / 006382 / 006540 /

020882 / 022620 / 022749

VW: 2T0609485 / T13607953



SCANIA | 110 | 111 | F112 | F113 | K112 | K113 | L113 | LK140 | LK141 | R112 | R113 | R142 | T112 | T113 | T142

CAMARA FREIO DUPLA 30X30 =M16=  
DOUBLE BRAKE CHAMBER 30X30  
M16

**BENDIX: 147048302**

PARAF. DESATUADOR CUICA 24/30 / 30/30

BRAKE CHAMBER SCREW

NTI: 007467

NTI: 023276 / 023277 / 023413 / 023617



AGRALE | 10.000 4,8H MWM EURO V SEM ABS | VOLARE W8 SEGUNDA EDICAO | FORD | 1215 | 1215CUM | 1217 CUMMINS | 1316 CHILE | 1317 | 1317 4X2 | 1317E 4X2 | 1319 4X2 | 1415 | 1415CUM | 1416 ARG | 1417 | 1417 CUMMINS | 1422 | 1516 CHILE | 1517 4X2 | 1517E 4X2 | 1519 4X2 | 1617 | 1622 | 1716 ARG. | 1717 | 1722 | 1722 4X2 | 1723 4X2 | 2421 | 2422 | 2422 6X2 | 2422E 6X2 | 2423 6X2 | 2425 | 2428 6X2 | 2428E 6X2 | 2429 6X2 | 2622 | 2626 | 2630 | 2631 | 712 | 814 | 815 | 815E | 815S | 915 | B1618 ONIBUS | B1621 ONIBUS | F12000 | F12000L | F13000 | F14000 | F14000HD | F16000 | F19000 | F21000 | F7000 | F8000 | FT7000 | IVECO | CURSOR | EUROCARGO | NOVO STRALIS | ONIBUS CC118E22 | STRALIS | TECTOR | VERTIS | SCANIA | 110 | 111 | F112 | F113 | K112 | K113 | L113 | LK140 | LK141 |

CAMARA FREIO SPRING BRAKE  
24X30  
DOUBLE BRAKE CHAMBER 24X30

CUICAS

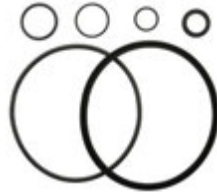
SPRING BRAKE

**BENDIX: 30006 V**

REP. CAM. IMPORT. TIPO 24

BRAKE CHAMBER REPAIR KIT T.24

NTI: 010044



VOLVO | B7 | N10 | N12

CAMARA SPRING BRAKE 30  
BRAKE CHAMBER 30

**BENDIX: 30009 V**

REP. CAM. IMPORT. TIPO 24 C/RETENTOR MAIOR

BRAKE CHAMBER REPAIR KIT T.24 W/ LARGER RETAINER

NTI: 016194



VOLVO | B10M | B58E | N10 | N12 | NL10 | NL12

CAMARA SPRING BRAKE 30  
BRAKE CHAMBER 30

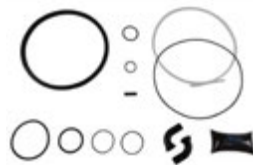
**BENDIX: 21600**

REP. CAM. SPR. BRAKE 7" =IMPORTADO=

BRAKE CHAMBER REPAIR KIT 7" EUROPEAN TYPE

NTI: 017081

NTI: 023481



SCANIA | 114 | 124 | 164 | 94 | F113 | K113 | K114 | K124 | P.G.R. | R113 | R143 | T113

CAMARA SPRING BRAKE 30  
BRAKE CHAMBER 30

CUICAS

SPRING BRAKE

**BENDIX: 3750009872**

REP. CINTA SPRING BRAKE 24"

BRAKE CHAMBER BRECKT REPAIR KIT 24"

NTI: 010755  
NTI: 023280 / 023281 / 023492



CAMARA SPRING BRAKE 30  
BRAKE CHAMBER 30

FORD | 1215 | 1215CUM | 1217 CUMMINS | 1316 CHILE | 1317 | 1317 4X2 | 1317E 4X2 | 1319 4X2 | 1415 | 1415CUM | 1416 ARG | 1417 | 1417 CUMMINS | 1422 | 1516 CHILE | 1517 4X2 | 1517E 4X2 | 1519 4X2 | 1617 | 1622 | 1716 ARG. | 1717 | 1717E 4X2 | 1722 | 1722 4X2 | 1722E 4X2 | 1723 4X2 | 2422 6X2 | 2422E 6X2 | 2423 6X2 | 2428 6X2 | 2428E 6X2 | 2429 6X2 | 2622E 6X4 | 2628E 6X4 | 2932E 6X4 | 4432E 4X2 | 4532E/1832E | 5032E 6X4 | 6332E 6X4 | 815E | B1618 ONIBUS | B1621 ONIBUS | F12000 | F12000L | F13000 | F14000HD | F19000 | F21000 | F7000 | F8000 | FT7000 | IVECO | CURSOR | EUROCARGO | NOVO STRALIS | NOVO TRAKKER | ONIBUS 170S28 | STRALIS | TECTOR | VERTIS | SCANIA | 110 | 111 | F112 | F113 | K112 | K113 | L113 | LK140 | LK141 | R112 | R113 | R142 | T112 | T113 | T142 |

**BENDIX: 3011FM72**

TAMPA SERVICIO TIPO 24"

COVER SERVICE BRAKE CHAMBER 24"

NTI: 010756  
NTI: 023774 / 023775



CAMARA SPRING BRAKE 30  
BRAKE CHAMBER 30

FORD | 1215CUM | 1217 CUMMINS | 1316 CHILE | 1317 | 1317 4X2 | 1317E 4X2 | 1319 4X2 | 1415CUM | 1416 ARG | 1417 | 1417 CUMMINS | 1422 | 1516 CHILE | 1517 4X2 | 1517E 4X2 | 1519 4X2 | 1617 | 1622 | 1716 ARG. | 1717 | 1722 | 1722 4X2 | 1723 4X2 | 2422 6X2 | 2422E 6X2 | 2423 6X2 | 2428 6X2 | 2428E 6X2 | 2429 6X2 | F12000L | VW | 12.140H | 12.140T | 12.170BT | 13.150 | 13.170 | 13.180 | 13.190 | 17.180 CUMMINS EURO 3 | 17.180 MWM EURO 3 | 17.220 CUMMINS EURO 3 | 17.220 MWM EURO 3 | 17.250E CONSTELLATION | 24.220 CUMMINS EURO 3 | 24.220 MWM EURO 3 | 24.250ECONSTELLATION

**DIVERSOS: 246428**

CAMARA FREIO DUPLA 30X30 =M16=

DOUBLE BRAKE CHAMBER 30X30 M16

NTI: 001004  
 NTI: 006314 / 006315  
 SCANIA: 1331415 / 1331422 / 1372917 / 1446059 / 571706  
 VW: 800391 / TJG607947



DIVERSOS | SCANIA | 110 | 111 | F112 | F113 | K112 | K113 | L113 | LK140 | LK141 | R112 | R113 | R142 | T112 | T113 | T142

**DIVERSOS: TJG607941**

ASSENTO MOLA CUICA FREIO TRAS. =30X30 (3 PONTAS)=

BRAKE CHAMBER SEAT REAR

NTI: 006264  
 NTI: 021053 / 021054 / 021055  
 VW: TAC607597



CAMARA FREIO SPRING BRAKE  
 24X30  
 DOUBLE BRAKE CHAMBER 24X30

DIVERSOS | FORD | 1215 | 1215CUM | 1217 CUMMINS | 1316 CHILE | 1317 | 1317 4X2 | 1317E 4X2 | 1319 4X2 | 1415 | 1415CUM | 1416 ARG | 1417 | 1417 CUMMINS | 1422 | 1516 CHILE | 1517 4X2 | 1517E 4X2 | 1519 4X2 | 1617 | 1622 | 1716 ARG. | 1717 | 1722 | 1722 4X2 | 1723 4X2 | 2422 6X2 | 2422E 6X2 | 2423 6X2 | 2428 6X2 | 2428E 6X2 | 2429 6X2 | B1618 ONIBUS | B1621 ONIBUS | F12000 | F12000L | F13000 | F14000HD | F19000 | F21000 | F7000 | F8000 | FT7000 | SCANIA | 110 | 111 | F112 | F113 | K112 | K113 | L113 | LK140 | LK141 | R112 | R113 | R142 | T112 | T113 | T142 | VW | 11.130 | 11.140 | 12.140 | 12.140H | 12.140T | 12.170BT | 12.180 | 13.190 | 13.130 | 13.150 | 13.170 | 13.170E | 13.180 | 13.180E | 13.180E CONSTELLATION | 13.190 | 14.140 | 14.150 | 14.170 | 14.170BT | 14.180 | 14.200 | 14.220 |

**DIVERSOS: 2RD607953**

MOLA CUICA TRAS. 16X24

EMERGENCY BRAKE AIR CHAMBER SPRING REAR

NTI: 005309  
 NTI: 021201 / 021202



CAMARA FREIO SISTEMA BENDIX  
 BRAKE CHAMBER BENDIX SYSTEM

DIVERSOS | VW | 11.130 | 11.140 | 12.140H | 12.140T | 12.170BT | 13.130 | 14.140 | 16.180 OD | 16.210CO | 5.140 MWM DELIVERY | 7.100 | 7.110 | 7.120 | 8.100 | 8.120 | 8.120OD | 8.140 | 8.140CE | 8.140CKD | 8.140CO | 8.150 | 8.150 EOD | 8.150 MWM DELIVERY | 8.150 OD | 8.150E | 8.150E PLUS | 9.150E | 9.150E CUMMINS DELIVERY | 9.150EOD | 9.150OD | L.80

DIVERSOS: TJG607965

MOLA PEQUENA CAMARA 30/30

30X30 CHAMBER SPRING

NTI: 005325  
NTI: 021244 / 021245



CAMARA FREIO SPRING BRAKE  
24X30  
DOUBLE BRAKE CHAMBER 24X30

DIVERSOS | FORD | 1215 | 1215CUM | 1217 CUMMINS | 1316 CHILE | 1317 | 1317 4X2 | 1317E 4X2 | 1319 4X2 | 1415 | 1415CUM | 1416 ARG | 1417 | 1417 CUMMINS | 1422 | 1516 CHILE | 1517 | 1517 4X2 | 1517E 4X2 | 1519 4X2 | 1521 | 1617 | 1622 | 1630 | 1716 ARG. | 1717 | 1717E 4X2 | 1722 | 1722 4X2 | 1722E 4X2 | 1723 4X2 | 1730 ARG. | 1731 | 2421 | 2422 | 2422 6X2 | 2422E 6X2 | 2423 6X2 | 2425 | 2428 6X2 | 2428E 6X2 | 2429 6X2 | 2622 | 2622E 6X4 | 2626 | 2628E 6X4 | 2630 | 2631 | 2632E 6X4 | 2932E 6X4 | 3224 | 4030 | 4031 | 4331 | 4432E 4X2 | 4532E/1832E | 5032E 6X4 | 6332E 6X4 | B1618 ONIBUS | B1621 ONIBUS | F12000 | F12000L | F13000 | F14000 | F14000HD | F16000 | F19000 | F21000 | F7000 | F8000 | FT7000 | SCANIA | 110 | 111 | F112 | F113 | K112 | K113 | L113 | LK140 | LK141 | R112 |

DIVERSOS: TJG607959

MOLA RET. CAM. CENTRAL CUICA TRAS.

SPRING BRAKE RETAINING SPRING REAR

NTI: 005323  
NTI: 021223 / 021224 / 021225 / 022637



CAMARA FREIO SPRING BRAKE  
24X30  
DOUBLE BRAKE CHAMBER 24X30

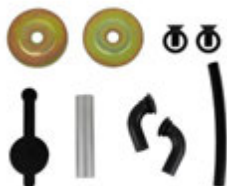
DIVERSOS | FORD | 1215 | 1215CUM | 1217 CUMMINS | 1316 CHILE | 1317 | 1317 4X2 | 1317E 4X2 | 1319 4X2 | 1415 | 1415CUM | 1416 ARG | 1417 | 1417 CUMMINS | 1422 | 1516 CHILE | 1517 4X2 | 1517E 4X2 | 1519 4X2 | 1617 | 1622 | 1716 ARG. | 1717 | 1722 | 1722 4X2 | 1723 4X2 | 2421 | 2422 | 2422 6X2 | 2422E 6X2 | 2423 6X2 | 2428 6X2 | 2428E 6X2 | 2429 6X2 | 2622 | 2622E 6X4 | 2626 | 2628E 6X4 | 2630 | 2631 | 3222 | 712 | 814/815(96/...) | 815 | 815E | 815S | 915 | B1618 ONIBUS | B1621 ONIBUS | F12000 | F12000L | F13000 | F14000 | F14000HD | F16000 | F19000 | F21000 | F7000 | F8000 | FT7000 | SCANIA | 110 | 111 | F112 | F113 | K112 | K113 | L113 | LK140 | LK141 | R112 | R113 | R142 | T112 | T113 | T142 | VW | 11.130 | 11.140 | 12.140 | 12.140H | 12.140T | 12.170BT | 12.180 | 13-190 | 13.130 | 13.150 | 13.

DIVERSOS: 891900 AA

REP. CAM. SPR. BRAKE =16/24 S/DIAF. =ALUMINIO=

BRAKE CHAMBER REPAIR KIT 24/30 30/30 (NO DIAPHRAGM)

NTI: 024106  
NTI: 024265



CAMARA FREIO SPRING BRAKE  
24X30  
DOUBLE BRAKE CHAMBER 24X30

CARRETAS | TODAS | DIVERSOS | FORD | 1215 | 1215CUM | 1217 CUMMINS | 1316 CHILE | 1317 | 1317 4X2 | 1317E 4X2 | 1319 4X2 | 1415 | 1415CUM | 1416 ARG | 1417 | 1417 CUMMINS | 1422 | 1516 CHILE | 1517 4X2 | 1517E 4X2 | 1519 4X2 | 1617 | 1622 | 1716 ARG. | 1717 | 1722 | 1722 4X2 | 1723 4X2 | 2422 6X2 | 2422E 6X2 | 2423 6X2 | 2428 6X2 | 2428E 6X2 | 2429 6X2 | B1618 ONIBUS | B1621 ONIBUS | F12000 | F12000L | F13000 | F14000HD | F19000 | F21000 | F7000 | F8000 | FT7000 | SCANIA | 110 | 111 | F112 | F113 | K112 | K113 | L113 | LK140 | LK141 | R112 | R113 | R142 | T112 | T113 | T142 | VW | 11.130 | 11.140 | 12.140 | 12.140H | 12.140T | 12.170BT | 12.180 | 13-190 | 13.130 | 13.150 | 13.170 | 13.170E | 13.180 | 13.180E | 13.180E CONSTELLATION | 13.190 | 14.140 | 14.150 | 14.170 | 14.170BT | 14.

CUICAS

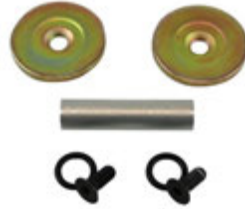
SPRING BRAKE

DIVERSOS: 891900 X

REP. CAM. SPR. BRAKE =16/24 S/DIAF. PARCIAL

BRAKE CHAMBER REPAIR KIT 24/30 30/30 (NO DIAPHRAGM)

NTI: 024778



CAMARA FREIO SPRING BRAKE  
24X30  
DOUBLE BRAKE CHAMBER 24X30

CARRETAS | TODAS | DIVERSOS | FORD | 1215 | 1215CUM | 1217 CUMMINS | 1316 CHILE | 1317 | 1317 4X2 | 1317E 4X2 | 1319 4X2 | 1415 | 1415CUM | 1416 ARG | 1417 | 1417 CUMMINS | 1422 | 1516 CHILE | 1517 4X2 | 1517E 4X2 | 1519 4X2 | 1617 | 1622 | 1716 ARG. | 1717 | 1722 | 1722 4X2 | 1723 4X2 | 2422 6X2 | 2422E 6X2 | 2423 6X2 | 2428 6X2 | 2428E 6X2 | 2429 6X2 | B1618 ONIBUS | B1621 ONIBUS | F12000 | F12000L | F13000 | F14000HD | F19000 | F21000 | F7000 | F8000 | FT7000 | SCANIA | 110 | 111 | F112 | F113 | K112 | K113 | L113 | LK140 | LK141 | R112 | R113 | R142 | T112 | T113 | T142 | VW | 11.130 | 11.140 | 12.140 | 12.140H | 12.140T | 12.170BT | 12.180 | 13.190 | 13.130 | 13.150 | 13.170 | 13.170E | 13.180 | 13.180E | 13.180E CONSTELLATION | 13.190 | 14.140 | 14.150 | 14.170 | 14.170BT | 14.

DIVERSOS: 891900 B

REP. CAM. SPR. BRAKE =30/30 24/30 S/DIAFR.

BRAKE CHAMBER REPAIR KIT 24/30 30/30 (NO DIAPHRAGM)

NTI: 023813

ADER: 962300 B

NTI: 023934 / 023935

VW: TJG698695 B



CAMARA FREIO SPRING BRAKE  
24X30  
DOUBLE BRAKE CHAMBER 24X30

CARRETAS | TODAS | DIVERSOS | FORD | 1215 | 1215CUM | 1217 CUMMINS | 1316 CHILE | 1317 | 1317 4X2 | 1317E 4X2 | 1319 4X2 | 1415 | 1415CUM | 1416 ARG | 1417 | 1417 CUMMINS | 1422 | 1516 CHILE | 1517 4X2 | 1517E 4X2 | 1519 4X2 | 1617 | 1622 | 1716 ARG. | 1717 | 1722 | 1722 4X2 | 1723 4X2 | 2422 6X2 | 2422E 6X2 | 2423 6X2 | 2428 6X2 | 2428E 6X2 | 2429 6X2 | B1618 ONIBUS | B1621 ONIBUS | F12000 | F12000L | F13000 | F14000HD | F19000 | F21000 | F7000 | F8000 | FT7000 | SCANIA | 110 | 111 | F112 | F113 | K112 | K113 | L113 | LK140 | LK141 | R112 | R113 | R142 | T112 | T113 | T142 | VW | 11.130 | 11.140 | 12.140 | 12.140H | 12.140T | 12.170BT | 12.180 | 13.190 | 13.130 | 13.150 | 13.170 | 13.170E | 13.180 | 13.180E | 13.180E CONSTELLATION | 13.190 | 14.140 | 14.150 | 14.170 | 14.170BT | 14.

DIVERSOS: 891900 P

REP. CAM. SPR. BRAKE 24/30-30/30 S/ DIAFR.(PARCIAL)

BRAKE CHAMBER REPAIR KIT 24/30 30/30 (PARTIAL)

NTI: 010174

ADER: 962300 P

NTI: 022784 / 022785

VW: TJG698695 P



CAMARA FREIO SPRING BRAKE  
24X30  
DOUBLE BRAKE CHAMBER 24X30

CARRETAS | TODAS | DIVERSOS | FORD | 1215 | 1215CUM | 1217 CUMMINS | 1316 CHILE | 1317 | 1317 4X2 | 1317E 4X2 | 1319 4X2 | 1415 | 1415CUM | 1416 ARG | 1417 | 1417 CUMMINS | 1422 | 1516 CHILE | 1517 4X2 | 1517E 4X2 | 1519 4X2 | 1617 | 1622 | 1716 ARG. | 1717 | 1722 | 1722 4X2 | 1723 4X2 | 2422 6X2 | 2422E 6X2 | 2423 6X2 | 2428 6X2 | 2428E 6X2 | 2429 6X2 | B1618 ONIBUS | B1621 ONIBUS | F12000 | F12000L | F13000 | F14000HD | F19000 | F21000 | F7000 | F8000 | FT7000 | SCANIA | 110 | 111 | F112 | F113 | K112 | K113 | L113 | LK140 | LK141 | R112 | R113 | R142 | T112 | T113 | T142 | VW | 11.130 | 11.140 | 12.140 | 12.140H | 12.140T | 12.170BT | 12.180 | 13.190 | 13.130 | 13.150 | 13.170 | 13.170E | 13.180 | 13.180E | 13.180E CONSTELLATION | 13.190 | 14.140 | 14.150 | 14.170 | 14.170BT | 14.

**DIVERSOS: 891900 PA**

REP. CAM. SPR. BRAKE 24/30-30/30 S/DIAFR. PARCIAL

BRAKE CHAMBER REPAIR KIT 24/30 30/30 (PARTIAL)

NTI: 023812  
 ADER: 962300 PA  
 NTI: 023936 / 023937  
 VW: TJK698695 PA



CAMARA FREIO SPRING BRAKE  
 24X30  
 DOUBLE BRAKE CHAMBER 24X30

CARRETAS | TODAS | DIVERSOS | FORD | 1215 | 1215CUM | 1217 CUMMINS | 1316 CHILE | 1317 | 1317 4X2 | 1317E 4X2 | 1319 4X2 | 1415 | 1415CUM | 1416 ARG | 1417 | 1417 CUMMINS | 1422 | 1516 CHILE | 1517 4X2 | 1517E 4X2 | 1519 4X2 | 1617 | 1622 | 1716 ARG. | 1717 | 1722 | 1722 4X2 | 1723 4X2 | 2422 6X2 | 2422E 6X2 | 2423 6X2 | 2428 6X2 | 2428E 6X2 | 2429 6X2 | B1618 ONIBUS | B1621 ONIBUS | F12000 | F12000L | F13000 | F14000HD | F19000 | F21000 | F7000 | F8000 | FT7000 | SCANIA | 110 | 111 | F112 | F113 | K112 | K113 | L113 | LK140 | LK141 | R112 | R113 | R142 | T112 | T113 | T142 | VW | 11.130 | 11.140 | 12.140 | 12.140H | 12.140T | 12.170BT | 12.180 | 13.190 | 13.130 | 13.150 | 13.170 | 13.170E | 13.180 | 13.180E | 13.180E CONSTELLATION | 13.190 | 14.140 | 14.150 | 14.170 | 14.170BT | 14.

**DIVERSOS: 891900**

REP. CAM. SPR. BRAKE 30/30 24/30 S/DIAFR.

BRAKE CHAMBER REPAIR KIT 24/30 30/30 (NO DIAPHRAGM)

NTI: 006473  
 ADER: 962300  
 NTI: 005848 / 022786  
 VW: T13698695



CAMARA FREIO SPRING BRAKE  
 24X30  
 DOUBLE BRAKE CHAMBER 24X30

CARRETAS | TODAS | DIVERSOS | FORD | 1215 | 1215CUM | 1217 CUMMINS | 1316 CHILE | 1317 | 1317 4X2 | 1317E 4X2 | 1319 4X2 | 1415 | 1415CUM | 1416 ARG | 1417 | 1417 CUMMINS | 1422 | 1516 CHILE | 1517 4X2 | 1517E 4X2 | 1519 4X2 | 1617 | 1622 | 1716 ARG. | 1717 | 1722 | 1722 4X2 | 1723 4X2 | 2422 6X2 | 2422E 6X2 | 2423 6X2 | 2428 6X2 | 2428E 6X2 | 2429 6X2 | B1618 ONIBUS | B1621 ONIBUS | F12000 | F12000L | F13000 | F14000HD | F19000 | F21000 | F7000 | F8000 | FT7000 | SCANIA | 110 | 111 | F112 | F113 | K112 | K113 | L113 | LK140 | LK141 | R112 | R113 | R142 | T112 | T113 | T142 | VW | 11.130 | 11.140 | 12.140 | 12.140H | 12.140T | 12.170BT | 12.180 | 13.190 | 13.130 | 13.150 | 13.170 | 13.170E | 13.180 | 13.180E | 13.180E CONSTELLATION | 13.190 | 14.140 | 14.150 | 14.170 | 14.170BT | 14.

**DIVERSOS: 8017438 R**

REP. DIAFR. MASTER EMERG. 30-HO (FURADO)

REPAIR KIT DIAPHRAGM MASTER (EMERGENCY)

NTI: 016795  
 NTI: 023271 / 023272 / 023273



CAMARA FREIO SPRING BRAKE HO  
 BRAKE CHAMBER 9 SPRING BRAKE  
 HO

DIVERSOS | FORD | 1717E 4X2 | 1722E 4X2 | VOLVO | VM17 | VW | 17.180 CUMMINS EURO 3 | 17.180 MWM EURO 3 | 17.220 CUMMINS EURO 3 | 17.220 MWM EURO 3 | 17.240T | 17.260EOT | 18.310OT | 18.320EOT | 19.320E CONSTELLATION | 19.370 CONSTELLATION | 24.220 CUMMINS EURO 3 | 24.220 MWM EURO 3 | 25.320 CONSTELLATION | 25.370E CONSTELLATION | 26.260 CONSTELLATION | 31.260 CONSTELLATION | 31.320E CONSTELLATION | 31.370E CONSTELLATION



## CUICAS

## SPRING BRAKE

**DIVERSOS: 8017438 P**

REP. MASTER EMERG. 30-HO (FURADO) PARCIAL

MASTER REPAIR KIT 30-HO (PARTIAL)W/ HOLE

NTI: 017031

NTI: 023268 / 023269 / 023270



CAMARA FREIO SPRING BRAKE HO  
BRAKE CHAMBER 9 SPRING BRAKE  
HO

DIVERSOS | FORD | 1717E 4X2 | 1722E 4X2 | VOLVO | VM17 | VW | 17.180 CUMMINS  
EURO 3 | 17.180 MWM EURO 3 | 17.220 CUMMINS EURO 3 | 17.220 MWM EURO 3 | 17.  
2400T | 17.260EOT | 18.3100T | 18.320EOT | 19.320E CONSTELLATION | 19.370  
CONSTELLATION | 24.220 CUMMINS EURO 3 | 24.220 MWM EURO 3 | 25.320  
CONSTELLATION | 25.370E CONSTELLATION | 26.260 CONSTELLATION | 31.260  
CONSTELLATION | 31.320E CONSTELLATION | 31.370E CONSTELLATION

**DIVERSOS: 2RD607951**

TAMPA BORRACHA PROTECAO CUICA (BAIXA)

COVER PROTECTION BRAKE CHAMBER

NTI: 007509

NTI: 021059 / 021061 / 021062 / 023246



CAMARA FREIO SPRING BRAKE  
24X30  
DOUBLE BRAKE CHAMBER 24X30

DIVERSOS | FORD | 1215 | 1215CUM | 1217 CUMMINS | 1316 CHILE | 1317 | 1317 4X2 |  
1317E 4X2 | 1319 4X2 | 1415 | 1415CUM | 1416 ARG | 1417 | 1417 CUMMINS | 1422 | 1516  
CHILE | 1517 4X2 | 1517E 4X2 | 1519 4X2 | 1617 | 1622 | 1716 ARG. | 1717 | 1722 | 1722 4X2 |  
1723 4X2 | 2422 6X2 | 2422E 6X2 | 2423 6X2 | 2428 6X2 | 2428E 6X2 | 2429 6X2 | B1618  
ONIBUS | B1621 ONIBUS | F12000 | F12000L | F13000 | F14000HD | F19000 | F21000 | F7000  
| F8000 | FT7000 | SCANIA | 110 | 111 | F112 | F113 | K112 | K113 | L113 | LK140 | LK141 |  
R112 | R113 | R142 | T112 | T113 | T142 | VW | 11.130 | 11.140 | 12.140 | 12.140H | 12.140T |  
12.170BT | 12.180 | 13-190 | 13.130 | 13.150 | 13.170 | 13.170E | 13.180 | 13.180E | 13.180E  
CONSTELLATION | 13.190 | 14.140 | 14.150 | 14.170 | 14.170BT | 14.180 | 14.200 | 14.220 |

**DIVERSOS: 2RD607149**

TAMPA EMERGENCIA MASTER TIPO 24

COVER SPRING BRAKE T24 (EMERGENCY)

NTI: 017513

NTI: 022731 / 025851



CAMARA FREIO SPRING BRAKE  
24X30  
DOUBLE BRAKE CHAMBER 24X30

DIVERSOS | FORD | 814/815(96/...) | VW | 7.100 | 7.110 | 7.120 | 8.100 | 8.140

DIVERSOS: TJG607951

TAMPA PROTETORA FREIO MOLA (ALTA)

COVER PROTECTION BRAKE

NTI: 005849



CAMARA FREIO SPRING BRAKE  
24X30  
DOUBLE BRAKE CHAMBER 24X30

DIVERSOS | FORD | 1215 | 1215CUM | 1217 CUMMINS | 1316 CHILE | 1317 | 1317 4X2 | 1317E 4X2 | 1319 4X2 | 1415 | 1415CUM | 1416 ARG | 1417 | 1417 CUMMINS | 1422 | 1516 CHILE | 1517 4X2 | 1517E 4X2 | 1519 4X2 | 1617 | 1622 | 1716 ARG. | 1717 | 1722 | 1722 4X2 | 1723 4X2 | 2422 6X2 | 2422E 6X2 | 2423 6X2 | 2428 6X2 | 2428E 6X2 | 2429 6X2 | B1618 ONIBUS | B1621 ONIBUS | F12000 | F12000L | F13000 | F14000 | F14000HD | F19000 | F21000 | F7000 | F8000 | FT7000 | SCANIA | 110 | 111 | F112 | F113 | K112 | K113 | L113 | LK140 | LK141 | R112 | R113 | R142 | T112 | T113 | T142 | VW | 11.130 | 11.140 | 12.140 | 12.140H | 12.140T | 12.170BT | 12.180 | 13-190 | 13.130 | 13.150 | 13.170 | 13.170E | 13.180 | 13.180E | 13.180E CONSTELLATION | 13.190 | 14.140 | 14.150 | 14.170 | 14.170BT | 14.180 | 14.

# CONTATOS / CONTACTS



**Vendas / Sales:** vendas@ntifreios.com.br  
**Geral / General:** cipec@cipec.com.br  
**Televendas / Telesales:** +55 19 3834.9822  
**Fax Gratuito / Fax Free:** 0800.707.9822  
**www.ntifreios.com.br**



Televendas: +55 19 3834.9822



+55 54 3211.1800



+55 11 2626.8839

www.ntifreios.com.br



## PRIMARY INDEX CODE - WABCO

0074205318	9
1953864	11
1953864 P	14
1953864 PC	11
1953864 PG	9
1953874	13
1953874 P	14
1953874 PG	14
4213050022	8
4213050162	4
4213051210	3
4213056502	3
4254462504	3
8797532604	5
8845001272	7
8845035492	13
8845380122	7
8960269104	6
8960528604	6
8960528904	7
8977510104	5
8993812844	4
9253200012	9
9253200012 P	10
9253200022	15
9253200022 P	12
9253200072	10
9253240012	10
9254200042	13
9254310052	11
9254320002	12
9254606044	5
9254612912	12
9254646014	4
9259076282	6
REP010784	8
T06698695	8



## PRIMARY INDEX CODE - KNORR



1C575472	17
4B51433	17
4B54273	16
4B54273 X	16
4B57677	18
C65723	17
I82914	21
I82914 P	22
I82914 PG	21
II15183	20
II15183 P	22
II33767C	18
II352771 A	19
II352771 E	19
II352771 EP	19
II352771 R	20
K005211	16
K02520002	22
K11916360	20
T06698695A	21
Z006730	18





## PRIMARY INDEX CODE - VARGA

SRFM00068	23
SRFM0068P	23
T13607965	23



## PRIMARY INDEX CODE - BENDIX



21600	25
30006 V	25
30009 V	25
203930	24
1953052	24
147048302	24
3750009872	26
3011FM72	26



Televentas: +55 19 3834.9822



+55 54 3211.1800



+55 11 2626.8839

[www.ntifreios.com.br](http://www.ntifreios.com.br)



## PRIMARY INDEX CODE - OTHER PRODUCTS

246428	27
891900	30
891900 AA	28
891900 B	29
891900 P	29
891900 PA	30
891900 X	29
8017438 P	31
8017438 R	30
2RD607149	31
2RD607951	31
2RD607953	27
TJG607941	27
TJG607951	32
TJG607959	28
TJG607965	28





## NTI INDEX CODE - WABCO



003591	11
004136	9
004138	8
006281	9
006856	15
006886	14
006907	5
006908	5
006959	9
006960	13
006995	14
006996	14
010498	6
010499	7
010784	8
011278	10
011279	6
011572	4
012015	13
012016	13
012414	8
013219	11
013320	3
014130	7
014131	7
014509	12
016560	3
016612	3
017461	10
017462	10
017555	4
018473	11
018474	12
018505	6
018756	12
023175	4
023176	5



Televentas: +55 19 3834.9822



+55 54 3211.1800



+55 11 2626.8839

[www.ntifreios.com.br](http://www.ntifreios.com.br)



## NTI INDEX CODE - KNORR

005850	21
006909	16
007206	21
007491	22
011277	21
013869	19
014671	17
015592	22
015596	20
015686	22
017334	18
017355	17
018831	18
018989	16
022382	17
023896	19
024700	20
025203	16
025724	18
025874	19
026907	20



## NTI INDEX CODE - VARGA



005321	23
013005	23
017562	23



Telefones: +55 19 3834.9822



+55 54 3211.1800



+55 11 2626.8839

[www.ntifreios.com.br](http://www.ntifreios.com.br)



## NTI INDEX CODE - BENDIX

000714	24
007456	24
007467	24
010044	25
010755	26
010756	26
016194	25
017081	25



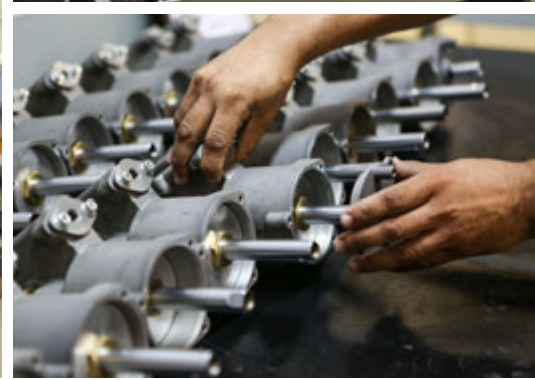
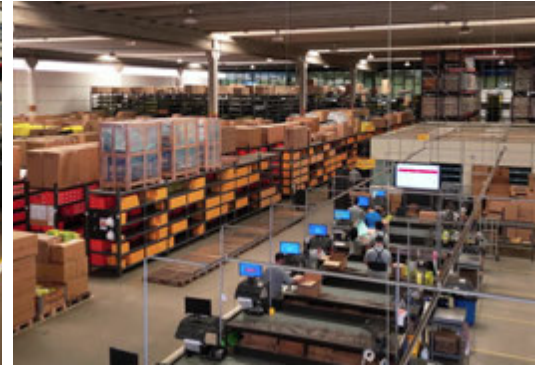
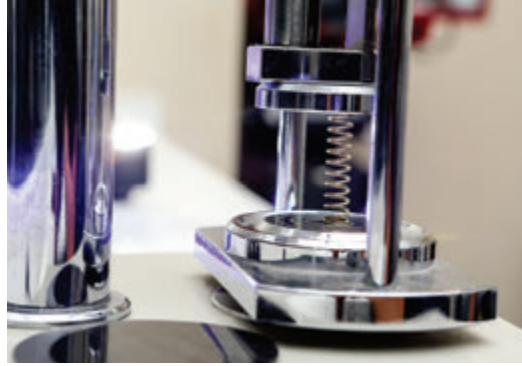
## NTI INDEX CODE - OTHER PRODUCTS



001004	27
005309	27
005323	28
005325	28
005849	32
006264	27
006473	30
007509	31
010174	29
016795	30
017031	31
017513	31
023812	30
023813	29
024106	28
024778	29









**NTI FREIOS  
2025**



[www.ntifreios.com.br](http://www.ntifreios.com.br)

EMPRESA CERTIFICADA  
CERTIFIED COMPANY **ISO 9001:2015**