



CATÁLOGO PEÇAS DE REPOSIÇÃO
Spare Parts Catalogue

COMPONENTES ELÉTRICOS
Electrical Components
2025

A Cipec iniciou suas atividades em 1983 na cidade de São Caetano como um pequeno distribuidor e fabricante de peças de reposição para caminhões e ônibus. Trabalhando com empenho e seriedade, a Cipec rapidamente ampliou seu leque de produtos de distribuição, alcançando logo em seguida o status de referência nacional no mercado de reposição da linha Scania.

Em 1999, devido ao ritmo crescente dos negócios, a estrutura da Cipec já não comportava a demanda, levando a empresa a transferir suas atividades para uma área de 20.000 m² em Indaiatuba, localizada estrategicamente no interior paulista. Nesse novo local, a empresa investiu fortemente na parte fabril e agregou as linhas Volvo, VW, MWM, Cummins e Iveco.

Com amplo espaço fabril e novos nichos de mercado se abrindo, em 2003 a Cipec inovou mais uma vez, implantando uma completa linha de servos de embreagem, válvulas e reparos de freios para linha pesada. Surgiu então a NTI, uma marca Cipec que em pouco tempo ficaria conhecida no mercado, oferecendo um produto competitivo e altamente confiável.

Atualmente, a Cipec conta com mais de 170 colaboradores e comercializa mais de 22.000 itens a partir de sua unidade fabril localizada em Indaiatuba, ampliando ainda mais sua capacidade de produção e expedindo mais de 30 toneladas de produtos por dia para mais de 50 países em todo o mundo.

Cipec began its activities in 1983 in the city of São Caetano as a small distributor and manufacturer of spare parts for trucks and buses. Working with dedication and seriousness, Cipec quickly expanded its range of distribution products and soon achieved national reference status in the replacement market for the Scania line.

By 1999, its structure could no longer accommodate the growing pace of business, prompting Cipec to transfer its operations to a 20,000 m² area in Indaiatuba, strategically located in the interior of São Paulo. Strong investments were made in the manufacturing sector, and the Volvo, VW, MWM, Cummins, and Iveco lines were added.

With ample manufacturing space and new market niches emerging, Cipec innovated once again in 2003, introducing a complete line of clutch servos, valves, and brake repair kits for heavy-duty applications. Thus, NTI was born, a Cipec brand that quickly became known in the market, offering competitive and highly reliable products.

Today, Cipec employs over 170 employees and sells over 22,000 items from its manufacturing facility located in Indaiatuba, further increasing its production capacity and shipping over 30 tons of products per day to more than 50 countries worldwide.

La Cipec inició sus actividades en 1983 en la ciudad de São Caetano como un pequeño distribuidor y fabricante de repuestos para camiones y autobuses. Trabajando con dedicación y seriedad, Cipec amplió rápidamente su gama de productos de distribución y pronto alcanzó el estatus de referencia nacional en el mercado de repuestos para la línea Scania.

Para 1999, su estructura ya no podía soportar el creciente ritmo de negocios, lo que llevó a Cipec a trasladar sus operaciones a una área de 20,000 m² en Indaiatuba, estratégicamente ubicada en el interior de São Paulo. Se realizaron fuertes inversiones en el sector manufacturero y se añadieron las líneas Volvo, VW, MWM, Cummins y Iveco.

Con un amplio espacio de fabricación y nuevos nichos de mercado emergentes, Cipec innovó una vez más en 2003, introduciendo una línea completa de servos de embrague, válvulas y reparaciones de frenos para aplicaciones de servicio pesado. Así nació NTI, una marca de Cipec que rápidamente se hizo conocida en el mercado, ofreciendo productos competitivos y altamente confiables.

Hoy en día, Cipec emplea a más de 170 trabajadores y vende más de 22,000 artículos desde su planta de fabricación ubicada en Indaiatuba, aumentando aún más su capacidad de producción y enviando más de 30 toneladas de productos al día a más de 50 países en todo el mundo.



SCANIA	3		
ABRACADEIRA	3		
CAIXA DE BATERIA	3		
CENTRAL ELETRICA	3		
CHAVE COMUTADORA/MIOLO/CONT.	3		
CHICOTE	4		
ESTICADOR	4		
FAROL	4		
INTERRUPTOR	5		
LANTERNA	5		
LENTE	6		
MANGUEIRA	6		
MOTOR ELETRICO	6		
PALHETA / BRACO	7		
PINO	7		
POLIA	7		
PRESILHA	7		
RELE	8		
SENSOR	8		
SUPORTE	8		
TAMPA	8		
VOLVO	9		
BUCHAS DIVERSAS	9		
CABO	9		
CHAVE	9		
CHAVE COMUTADORA/MIOLO/CONT.	9		
FAROL	10		
INTERRUPTOR	10		
LANTERNA	11		
LENTE	12		
MAQUINA DE VIDRO	12		
MOTOR ELETRICO	12		
PALHETA / BRACO	12		
POLIA	13		
RELE	13		
SENSOR	13		
VW	14		
BUCHAS DIVERSAS	14		
ESTICADOR	14		
INTERRUPTOR	14		
LANTERNA	14		
PALHETA / BRACO	15		
RELE	15		
SENSOR	15		
FORD	16		
BUCHAS DIVERSAS	16		
INTERRUPTOR	16		
LANTERNA	16		
IVECO	17		
FAROL	17		
		LANTERNA	17
		LENTE	17
		PALHETA / BRACO	18
		VALVULA	18
		MERCEDES	19
		FAROL	19
		LANTERNA	19
		MOLDURA	19
		PALHETA / BRACO	19
		POLIA	20
		AGRALE	21
		VALVULA SOLENOIDE	21
		DAF	22
		PALHETA / BRACO	22
		MAN	23
		PALHETA / BRACO	23
		CONTATOS	24
		ÍNDICE POR CÓDIGO	25

SCANIA 3

CLAMP	3
BATTERY BOXE	3
ELETRIC MODULES	3
SWITCH	3
WIRING HARNESS	4
BELT TENSIONER	4
HEAD LAMP	4
SWITCH	5
LANTERN	5
LEN	6
HOSE	6
DOOR WINDOW LIFTERS	6
BLADE / ARM	7
PIN	7
PULLEY	7
CLAMP	7
RELAYS	8
SENSOR	8
BRACKET	8
COVER	8

VOLVO 9

BUSHING ALL TYPE	9
CABLE	9
SWITCH	9
SWITCH	9
HEAD LAMP	10
SWITCH	10
LANTERN	11
LEN	12
WINDOW LIFTER MECHANISM	12
DOOR WINDOW LIFTERS	12
BLADE / ARM	12
PULLEY	13
RELAYS	13
SENSOR	13

VW 14

BUSHING ALL TYPE	14
BELT TENSIONER	14
SWITCH	14
LANTERN	14
BLADE / ARM	15
RELAYS	15
SENSOR	15

FORD 16

BUSHING ALL TYPE	16
SWITCH	16
LANTERN	16

IVECO 17

HEAD LAMP	17
-----------	----

LANTERN	17
---------	----

LEN	17
-----	----

BLADE / ARM	18
-------------	----

VALVE	18
-------	----

MERCEDES 19

HEAD LAMP	19
-----------	----

LANTERN	19
---------	----

FRAME	19
-------	----

BLADE / ARM	19
-------------	----

PULLEY	20
--------	----

AGRALE 21

SOLENOID VALVE	21
----------------	----

DAF 22

BLADE / ARM	22
-------------	----

MAN 23

BLADE / ARM	23
-------------	----

CONTACTS 24

INDEX BY CODE 25

1.01 ABRACADEIRA CLAMP

1371444 CLAMP FOR ELECTRIC

ABRAC. CABO ELETRICO 94/114/124/164
007998



/ P94 / 114 / 124 / 164

1.02 CAIXA DE BATERIA BATTERY BOXE

1362693 BATTERY BOX COVER 94/

TAMPA CX. BATERIA 94/114/124/164
006841



114 / 124 / 164 / 94 /

1.03 CENTRAL ELETRICA ELETRIC MODULES

1115952 ELECTRIC MODULE

CENTRAL ELETRICA P93/R143/R113
009955



P93 / R113 / T113 / R143 /

290709 ELECTRIC MODULE

CENTRAL ELETRICA T112/113 =SERIE 2=
007918



/ T112 / R112 / T142 / R142 / K112 / F112

1.04 CHAVE COMUTADORA/MIOLO/ SWITCH

1327015 ALERT INDICATOR SWITCH

INTERRUPTOR PISCA ALERTA 94/114/124/164
007039



114 / 124 / 164 / K124 / 94 / F94 / K94 /

1402448 TURN SIGNAL SWITCH

CHAVE SETA 94/114/124/164
009317



114 / 124 / 164 / K124 / 94 / F94 / K94 /

1425019 IGNITION CHANGE-OVER

COMUTADOR IGNICAO S.4
011005



114 / 124 / 164 / K124 / 94 / K94 /

203473 JUNCTION BOX 111

CHAVE CONTATO 111
000710



L75 / L76 / 110 / 111 / LK140 / LK141 /

347893 SWITCH INDICATOR 112

CHAVE SETA 112
001576
1817910
301491



T112 / R112 / K112 / F112 / T142 / R142 /

360248 TURN SIGNAL SWITCH

CHAVE SETA C/RETORNO AUTOMATICO P93/
009649
1358175



T113 / R113 / K113 / R143 / L113 / P93 /

1.05 CHICOTE
WIRING HARNESS

1732515 WIRING HARNESS

CHICOTE ELET. SOQ. FAROL E SETA S.4
014623
1467007



114 / 124 / 164 / P.G.R. / 94 /

389202 SENSOR WIRING HARNESS

CHICOTE SENSOR P/ OLEO
001641



T112 / T113 / F113 / R113 / K112 / R112 / R142 /
T142 / F112 / K113 / R143 / L113 / 114 / 124 / 164

1.06 ESTICADOR
BELT TENSIONER

290151 ALTERNATOR BELT

ESTIC. CORREIA ALTERN. 112
001239



/ T112 / R112 / T142 / R142

1.07 FAROL
HEAD LAMP

1446354 FOG LAMP R.H.

FAROL AUXILIAR L.D. S-5
015529



P.G.R. / P.G.R.S. /

1446356 FOG LAMP R.H.

FAROL AUX. NEBLINA L.D. S-5
015531
2080689
1852573



P.G.R. / P.G.R.S. /

1732509 HEADLIGHT L.H.

FAROL PRINCIPAL L.E. S.4/P.G.R.T.
014604
1467000
1446587



114 / 124 / 164 / P.G.R. / 94 /

1732510 HEADLIGHT R.H.

FAROL PRINCIPAL L.D. S.4/P.G.R.T.
014605
1467003
1446588



114 / 124 / 164 / P.G.R. / 94 /

1892322 HEADLIGHT L.H.

FAROL PRINCIPAL L.E. PGR
016208
2442629
1900349
1760551



1892324 HEADLIGHT R.H.

FAROL PRINCIPAL L.D. PGR
016209
2442631
1900351
1760554
1730958



P.G.R. / P.G.R.S. /

2241828 HEADLIGHT R.H. FH12/FM12

FAROL COMPLETO L.E. P.G.R.T.
019341
2416136
2000049



P.G.R. /

2241829 HEADLIGHT R.H. FH12/FM12

FAROL COMPLETO L.D. P.G.R.T.
019340
2416137
2000057



P.G.R. /

537034 HEADLIGHT 112/113

FAROL COMPLETO 112
007840
527838



T112 / T113 / R113 / R143 / P93 / R112 / R142 /
T142 /

537036 HEADLIGHT MOULDING

MOLDURA FAROL 537034 112/3
013146



T113 / R113 / R143 / P93 /

1.08 INTERRUPTOR SWITCH

285905 AIR PRESSURE SWITCH W/

INTERRUPTOR PRESSAO AR C/PINO
015335



T112 / T113 / F113 / R113 / K112 / R112 / R142 /
T142 / F112 / K113 / R143 / P93 /

290950 ALERT INDICATOR SWITCH

INTER. PISCA-ALERTA 113
001246
1363131
1328177



T112 / T113 / R113 / K112 / R112 / R142 / T142 /
R143 / P93 /

290951 HEAD LAMP SWITCH 112

INTERRUPTOR FAROL 112
001247



T112 / T113 / F113 / R113 / K112 / R112 / R142 /
T142 / F112 / K113 / R143 / L113 / P93 /

290955 ELETRIC WINDOW SWITCH

INTER. VIDRO ELETRICO 112
001249



T112 / R112 / T142 / / R142 / R113 / T113 / R143

353621 SWITCH HEADLIGHT AUX.

INTER. FAROL AUX. E ESPELHO TERM.113
003492
1488066



/ P93 / R113 / T113 / R143 / 94 / 114 / 124 / 164

353628 ELET. WINDOW SWITCH

INTERRUPTOR VIDRO ELETRICO 113
003493



/ 113 / 94 / 114 / 124 / 164 / R113 / T113 / R143

365015 LIGHT CONTACT

INTERRUPTOR REOSTATO 94/114/24/64
009316



371910 STARTER SWITCH S.4

INTERRUPTOR DE IGNICAO S.4
006569



T113 / F113 / R113 / K113 / R143 / L113 /

397946 BRAKE LIGHT SWITCH 112

INTERRUPTOR PRESSAO AR 112 =C/
001211



T112 / T113 / F113 / R113 / K112 / R112 / R142 /
T142 / F112 / K113 / R143 / P93 /

532296 BRAKE LIGHT PRESSURE

INTERRUPTOR PRESSAO LUZ FREIO 111
001830



1.09 LANTERNA LANTERN

1508180 REAR LANTERN L.H.

LANTERNA TRAS. C/VIGIA L.E.(APOS 2005) S.
011825
2129985
2021579
1906552
1756574



114 / 124 / 164 / 94 /

1508181 REAR TAIL LIGHT R.H.

LANTERNA TRAS. S/VIGIA L.D. (APOS 2005) S.
011826
2129987
2021575
1906549
1756571



114 / 124 / 164 / 94 /

1747981 CORNER LAMP

LANTERNA PISCA DIANT. P2570/R420
016207



P.G.R. /

1756751 REAR TAIL LIGHT R.H.

LANTERNA TRAS. S/VIGIA C/SOQUETE L.D.S.
012931



114 / 124 / 164 / P.G.R. / 94 /

1756754 REAR LANTERN L.H.

LANTERNA TRAS. C/VIGIA C/SOQUETE L.E.S.
012930



114 / 124 / 164 / P.G.R. / 94 /

1798980 LIGHT

LANTERNA TAPA SOL C/LED'S BRANCO E
013810
1910437



114 / 124 / 164 / P.G.R. / 94 /

2380954 TAIL LIGHT R.H W/O LICISE

LANTERNA TRAS. S/ VIGIA L.D. L.P.G.R.S.
027307
2241859
1905043



2380955 TAIL LAMP LH WITH

LANTERNA TRAS. C/ VIGIA L.E. L.P.G.R.S.
027306
2241860
1905044



1.09 LANTERNA

LANTERN

289927 FRONT LIGHT LEFT SIDE

LANTERNA DIANT. L.E. 112

001232
1365968
526617
394769
394766



/ T112 / R112 / T142 / R142 / T113 / R113 / R143 / P93

289928 FRONT LIGHT RIGHT SIDE

LANTERNA DIANT. L.D. 112

001233
526618
394768
394767
1365969



T112 / T113 / R113 / R112 / R142 / T142 / R143 / P93 /

1.10 LENTE

LEN

1446583 MAIN LIGHT LENS P.G.R.T.

LENTE FAROL PRINCIPAL L.E. S.4/P.G.R.T.

019661
1349779



114 / 124 / 164 / P.G.R. / 94 / P.G.R.S. /

1446584 MAIN LIGHT LENS P.G.R.T.

LENTE FAROL PRINCIPAL L.D. S.4/P.G.R.T.

019660
1349780



1549815 HEAD LAMP LENS RH P.G.R.

LENTE FAROL L.D. P.G.R.

025816
2399977



1784669 REAR LANTERN LEN L.H.

LENTE LANTERNA TRAS. L.E. S.4

012928



114 / 124 / 164 / P.G.R. / 94 /

1784670 REAR LANTERN LEN R.H.

LENTE LANTERNA TRAS. L.D. S.4

012929



114 / 124 / 164 / P.G.R. / 94 /

1.11 MANGUEIRA

HOSE

1386087 RADIATOR RESERVED

MANG. MOLDADA RESERV. RADIADOR 114

005976



114 / 124 / 164 /

1.12 MOTOR ELETRICO

DOOR WINDOW LIFTERS

1442292 DOOR WINDOW LIFTER

MOTOR ELETRICO VIDRO PORTA L.E. S.4/P.G.

010297
2572352
2303350
560097



114 / 124 / 164 / P.G.R. / 94 /

1442293 DOOR WINDOW LIFTER

MOTOR ELETRICO VIDRO PORTA L.D. S.4/P.G.

010298
2572363
2303355
560098



114 / 124 / 164 / P.G.R. / 94 /

1889273 POWER WINDOW ENG. W/

MOTOR ELETRICO C/CHICOTE C/5 PLUGS S.

025036



1940919 POWER WINDOW ENG W/

MOTOR ELETR. PORTA C/CHICOTE 4 PLUGS

025042



1.13 PALHETA / BRACO

BLADE / ARM

1380036 WINDSHIELD WIPER BLADE

PALHETA LIMPADOR PARABRISA 114

004093
2848235
2657197
1849341
1541106
1780246
1450076



114 / 124 / 164 / 94 /

1.14 PINO

PIN

386064 HEAD LAMP BALL PIN

PINO ESFERICO REG. FAROL P93/R113

009035
300681



/ P93 / R113

1.15 POLIA

PULLEY

1347401 ALTERNATOR PULLEY

POLIA ALTERNADOR 114/24

010193



114 / 124 / K124 / K94 / K114 /

1.16 PRESILHA

CLAMP

1357522 HEADLIGHT CLAMP

PRESILHA FAROL S.4

013907



114 / 124 / 164 / P.G.R. / 94 /

293091 CHASSI CLAMP

PRESILHA FIACAO DO CHASSI

001264



/ T112 / R112 / K112 / F112 / T142 / R142 / P93 / F113 / K113 / R113 / T113 / R143 / L113 / 94 / 114

293092 CHASSI CLAMP

PRESILHA FIACAO DO CHASSI

001265



/ T112 / T113 / 114 / F113 / K113 / R113 / R143 / P93 / K112 / R112 / R142 / P.G.R. / K124 / 94 /

331946 CHASSI CLAMP

PRESILHA FIACAO CHASSI

002708



/ T112 / T113 / 114 / F113 / K113 / R113 / R143 / P93 / K112 / R112 / R142 / K124 / 94 / L113 /

1.17 RELE

RELAYS

1387022 GEAR BOX EXCHANGE

RELE TROCA DE CAIXA 94

006238
1543806
1475750
1347277



/ 114 / 124 / 164 / 94 / K94 / K113

1401789 RELAY 94/114/24/64

RELE PISCA 94/114/24/64

007686
2159998
1328548



114 / 124 / 164 / K124 / 94 / F94 / K94 / K114 /

233200 RELAY

RELE ELETRONICO PISCA

000880



110 / 111 / LK140 / LK141 /

334470 RELAY K/R/F/L 113 R 143

RELE PISCA ALERTA K/R/F/L 113 R 143 24V

001556
1334196
365559
289929
D9436



T112 / R112 / F112 / K112 / R142 // T142 / P93 / F113 / K113 / R113 / T113 / R143 / L113

1.18 SENSOR

SENSOR

1112819 TEMPERATURE SENSOR S.

SENSOR TEMPERATURA S.4

018572

imagem indisponível

/ SERIE4

1374052 WATER LEVEL SENSOR

SENSOR NIVEL D'AGUA S.4/P.G.R.T.

018511



94 / 114 / 124 / 164 / P.G.R. /

1491408 ENGINE TEMPERATURE

SENSOR TEMPERATURA MOTOR S.4

016086
1397851



114 / 124 / 164 / K124 / 94 / K94 / K114 /

1777165 AIR CON. SENSOR P.G.R.

SENSOR ELETRON. AR COND. P.G.R.

025602



1862890 COMMAND UNIT SENSOR

SENSOR COMBINADO UNID. COMANDO S4/PGR

016085
2462543
2154180
2149696
1864224
1787155
1535520



114 / 124 / 164 / P.G.R. / K124 / 94 / K94 / K114 /

1.19 SUPORTE

BRACKET

1308161 BRACKET (FROM M.3092621)

SUPORTE ALTERN. (A PARTIR M.3092621)

002502
1341749



T113 / R113 /

1358833 HEADLIGHT BRACKET

SUPORTE FAROL 94/114/24/64

007528
1520919



/ 94 / 114 / 124 / 164

365372 BRACKET T113

SUPORTE ALTERN. (MOD.NOVO) T113

002919



T112 / T113 / R113 / R112 /

1.20 TAMPA

COVER

1371829 COVER

TAMPA TERMINAL CABO BATERIA 94/114/24/

007994



/ 94 / 124 / 114 / 164 / K94 / K114 / K124 / F94

1440499 ELECTRIC WIRES SET

TAMPA CHICOTE ELETRICO P.G.R.

025490



279732 COVER

TAMPA CX. LIGACAO 94/114/24/64

008000



/ 114 / 94 / 124 / 164 / P.G.R.

2.01 BUCHAS DIVERSAS

BUSHING ALL TYPE

946176 V BELT STRETCHER

BUCHA ESTICADOR CORREIA
006227



NL10 / NL12 / B58 / N10 / N12 /

2.02 CABO

CABLE

20382517 V ADAPTOR CABLE N10/12/

CABO ADAPTADOR N10/12/NH10/12
025796

imagem
indisponivel

2.03 CHAVE

SWITCH

21243844 V SWITCH

CHAVE GERAL FH12/13/16/NH12/FM12/B9/10/12
018182



2.04 CHAVE COMUTADORA/MIOLO/

SWITCH

1594959 V WIPER SWITCH

CHAVE LIMPADOR PARABRISA N/NL
009328



1624133 V TURN SIGNAL SWITCH W/O

CHAVE SETA S/ PILOTO AUTOM. EDC/FH/FM/
016483



20752914 V COMPLETE POWER

INTER. CPL. VIDRO ELET. FH/FM/NH
019720
22566506 V
20455313 V
20452013 V
21543893 V
21354597 V
21277573 V



FH16 / FH12 / FH / FM / FM12 / FM9 / NH12 /

20752918 V CENTRAL ELECTRIC

INTER. CPL. VIDRO ELET. FM9/12/FH12/16/
017702
22566510 V
20568857 V
20455317 V
20452017 V
21543897 V
21354601 V



20752919 V CENTRAL ELECTRIC

INTER. CPL. VIDRO ELET. FM9/12/FH12/16/
017703
22566514 V
21543901 V
21354613 V
21277630 V
20953593 V
20568858 V



2.05 FAROL HEAD LAMP

20360898 V HEADLIGHT L.H. FH12/FM12

FAROL COMPLETO L.E. FH12/FM12
015267
20713720 V



FH16 / FH12 / FM12 / FM9 /

20452848 V LIGHTHOUSE FRAME R.H.

ARO FAROL L.D. FH A PARTIR 2005
013172



20818763 V HEAD LAMP LH VM

FAROL PRINCIPAL L.E. VM
025538
20818770 V
20818768 V
20818765 V



20818771 V HEAD LAMP RH VM

FAROL PRINCIPAL L.D. VM
025537
20818781 V
20818779 V
20818775 V



21035637 V HEADLIGHT R.H. FH

FAROL L.D. FH
017312



FH /

21035638 V HEADLIGHT L.H. FH

FAROL L.E. FH
017311



FH /

21035690 V FOG LIGHT RH FH/FM

FAROL INF. AUXILIAR L.D. FH/FM
025535
21297909 V



21221153 V FOG LAMP RH FH/FM

FAROL AUXILIAR L.D. FH/FM
025539
84186281 V
82140744 V
22332603 V
22332596 V
22332594 V
22332592 V



21221154 V FOG LAMP LH FH/FM

FAROL AUXILIAR L.E. FH/FM
025540
84186279 V
82140763 V
22332604 V
22332600 V
22332597 V
22332595 V



21297917 V FOG LAMP R.H.

FAROL AUXILIAR L.D. (2 LAMP.) FH13/16
017206



21297918 V FOG LAMP LH (2 LAMPS)

FAROL AUXILIAR L.E. (2 LAMP.) FH13/16
017207



FH16 / FH13 /

3981594 V HEADLIGHT

FAROL L.D./L.E. FH12
007512



FH16 / FM10 / FM7 / FH12 / FM12 /

82304585 V COMPLETE HEADLIGHT R.H.

FAROL COMPLETO L.D. FH/FM/NH/VM
017204



82304599 V HEADLIGHT L.H. FH/FM/NH/

FAROL COMPLETO L.E. FH/FM/NH/VM
017205



2.06 INTERRUPTOR SWITCH

1087960 V BRAKE LIGHT SWITCH

INTERRUPTOR LUZ FREIO SERVICIO NL/EDC/
003739



B7R / B10B / B10M / FH16 / NL12 / B58 / NL10 /
N10 / N12 / B7 / B12 / B10R / FH12 /

1087962 V BRAKE LIGHT SWITCH

INTER. BREACK-AR NL/EDC/B10M
003740



FH16 / NL12 / NL10 / N10 / N12 / F10 / F12 / F16 /
FL10 / FL7 / FH12 / FL12 /

1578133 V TEMPERATURE SWITCH

INTERRUPTOR TEMPERATURA N/NL
009331



1578702 V HEADLIGHT SWITCH

INTERRUPTOR FAROL
013942



2.06 INTERRUPTOR SWITCH

1578704 V SWITCH
INTERRUPTOR LIMPADOR PARABRISA
013943



1594042 V REVERSE LIGHT SWITCH
INTERRUPTOR LUZ RE
003742



21095380 V REAR AND BRAKE LIGHT
INTER. LUZ RE E FREIO FH12/16NL12S/12S/
014949



FL / FE /

3181369 V REAR LIGHT SWITCH B7/
INTERRUPTOR LUZ RE B7/B10M
017592



B10B / B7 / FL6 / FL608 / FL615 / FL616 / FL619 /
B7F / B10M / B7R /

3197870 V REAR LIGHT SWITCH FH
INTERRUPTOR LUZ RE FH
015354



FH16 / FM7 / FH12 / FH / FM / FM12 / FM9 / NH12 /
FL6 / VM /

3197871 V REAR LIGHT SWITCH FH
INTERRUPTOR LUZ REDUZIDA FH
018571



FH16 / FM7 / FH12 / FH / FM / FM12 / FM9 / NH12 /
FL6 / VM /

2.07 LANTERNA LANTERN

20409875 V FRONT LIGHT R.H. VL/FH
LANTERNA DIANT. L.D. FH/VL
015538



20425732 V REAR LANTERN LEN
LENTE LANT. TRAS. FH/FM/NH12 (APOS 2004)
011827



20507623 V REAR TAIL LIGHT L.H.
LANTERNA TRAS. L.E. C/VIGIA FH/FM/NH12
011828



FH12 / FH / FM / FM12 / FH16 / VM / FM9 / FL6 /

21761283 V REAR LIGHT RH FH/FM/VM
LANTERNA TRAS. L.D. FH/FM/VM
025529
21761154 V
21652946 V
21652944 V
21097450 V
21097449 V
21097448 V



21761288 V REAR LIGHT LR FH/FM/VM
LANTERNA TRAS. L.E. FH/FM/VM
025530
210947448 V
21652942 V
20892384 V



3981460 V REAR TAIL LIGHT L.H.
LANTERNA TRAS. L.E. C/VIGIA FH/FM/NH12
011831



3981461 V REAR TAIL LIGHT R.H.
LANTERNA TRAS. L.D. S/VIGIA FH/FM/NH12
011832



3981666 V PARKING LIGHT FRONT
LANTERNA ESTACIONAMENTO DIANT. FH 98
013953



FH16 / FM10 / FM7 / FH12 / FM12 / FH16J / FH12J /

3981782 V REAR LANTERN LEN
LENTE LANT. TRAS. FH/FM/NH12
011830



82114500 V FRONT LIGHT R.H. FH/FM/VL
LANTERNA DIANT. L.D. FH/FM/VL-2010
015540



82114506 V FRONT LIGHT L.H. FH/FM/VL
LANTERNA DIANT. L.E. FH/FM/VL-2010
015541



82355678 V FRONT SIGNAL LIGHT FH
LANTERNA PISCA DIANTEIRA FH
025829



2.08 LENTE

LEN

20379428 V HEADLIGHT LENSE L.H. FH

LENTE FAROL L.E. FH/FM9/12

017202
20710524 V



FH12 / FM9 /

2.09 MAQUINA DE VIDRO

WINDOW LIFTER MECHANISM

3176549 V DOOR WINDOW LIFTER

MOTOR ELETRICO VIDRO PORTA L.E. FH/NH/

013994



FH16 / FM10 / FM7 / FH12 / FH / FM / FM12 / FM9 / NH12 /

3176550 V DOOR WINDOW LIFTER

MOTOR ELETRICO VIDRO PORTA L.D. FH/NH/

013993



FH16 / FM10 / FM7 / FH12 / FH / FM / FM12 / FM9 / NH12 /

2.10 MOTOR ELETRICO

DOOR WINDOW LIFTERS

20425122 V POWER LOCK FM9/FM12/FH/

MOTOR ELETRICO FM9/FM12/FH/FH12/NH12

025033
84173875 V



2.11 PALHETA / BRACO

BLADE / ARM

20537743 V WINDSHIELD WIPER BLADE

PALHETA LIMPADOR PARABRISA VOLVO

027571
84035980 V
20826592 V
8189186 V



2.12 POLIA PULLEY

465145 V ALTERNATOR PULLEY

POLIA ALTERNADOR =TODOS=
009274



/ F10 / F12 / N10 USA / N12 USA / B7R / FL10 /
FL7 / FS7 / NL10 / NL12 / B58 / F16

2.13 RELE RELAYS

3985008 V RELY CENTRAL LOCK FH12/

RELE TRAVA CENTRAL FH12/FM7/12/NH12
017399



FH16 / FM10 / FM7 / FH12 / FM12 / FH16J / NH12 /
FL6 / FH12J /

2.14 SENSOR SENSOR

1662938 V INDUCTIVE SENSOR W/

SENSOR INDUTIVO C/PINO RED. FH12/NH12
017589



20850557 V SUSPENSION LEVEL

SENSOR NIVEL SUSPENSAO FH12/16/FM9/12/
017398
20514066 V
8144352 V



B7R / B10M / FH16 / FH12 / FM12 / FM9 / B12M /
NH12 / B12R / B12B /

3.01 BUCHAS DIVERSAS

BUSHING ALL TYPE

TJG899441 ENGINE BUSHING

BUCHA PARTIDA
006707



7.100 / 8.100 / 8.140 / L.80 / 12.140T / 12.170BT /
12.180 / 14.150 / 14.170BT / 14.180 / 14.220 / 16.

3.02 ESTICADOR

BELT TENSIONER

2R0145299 BELT TENSIONER =

ESTIC. CORREIA MOTOR =ELETRONICO=
011246
4894116
4891116



17.250E / 23.250E / 24.250E / 8.150E / 13.170E /
15.170E / 15.190E / 9.150E / 15.180E / 13.180E /

2T2145299A BELT TENSIONER

ESTIC. CORREIA MOTOR
011247
3973831
2T2145299



CONSTELLATION /

3.03 INTERRUPTOR

SWITCH

TAR953235 O LIGHT SWITCH

INTERRUPTOR PISCA ALERTA
007648



16.180CO / 16.210CO /

3.04 LANTERNA

LANTERN

690949103 SIGN LANTERN

LANTERNA SINALIZADORA
005686



/ L.80

T12945223A REAR LENS LANTERN

LENTE LANTERNA TRASEIRA
004471



/ 6.90 / 7.90S / 7.110S / 11.130 / 13.130 / 14.140 /
14.210 / 16.210 / 8.150E / 8.100 / 8.120 / 8.150 /

T12953141 LENS LANTERN - FRONT

LENTE LANT. DIANT. ACRILICA
004475
2TA953161
TAC953161



/ 6.90 / 7.90S / 7.110S / 11.130 / 13.130 / 11.140 /
12.140 / 14.150 / 14.200 / 14.220 / 16.170 / 16.220

3.05 PALHETA / BRACO BLADE / ARM

2V5955425 WINDSHIELD WIPER BLADE
PALHETA LIMPADOR PARABRISA VW
027572



3.06 RELE RELAYS

TJG953277 TRAFFIC WARNING LAMP
RELE LUZES EMERGENCIA
004957
1119532272



/ 6.90 / 7.90S / 7.110

3.07 SENSOR SENSOR

0289195011 TEMPERATURE MONITOR
SENSOR TEMPERATURA
004779



/ 6.90 / 11.130 / 13.130 / 11.140 / 7.90

4.01 BUCHAS DIVERSAS

BUSHING ALL TYPE

81DB5K353BA ENGINE BUSHING

BUCHA PARTIDA
022114



815 / 1415CUM / 1317 / 1417 / 1215CUM / 1717 /
1721 / 1421 / 1521 / 1617 / 2421 / 1722 / 1731 /

4.02 INTERRUPTOR

SWITCH

TAR953235 O LIGHT SWITCH

INTERRUPTOR PISCA ALERTA
007648



B1618 ONIBUS / B1621 ONIBUS

4.03 LANTERNA

LANTERN

86HU13368AA FRONT TURN SIGNAL LIGHT

LANTERNA SETA DIANT. L.D.
018491
85HB13368AA



814/815 05/1996=11/2000 /

5.01 FAROL HEAD LAMP

500305102 HEADLIGHT R.H.
FAROL DIANTEIRO L.D. EUROTECH
015547
4861340
4861328



EUROTECH / 450E37 TRATOR 4X2 / 740E42 TZ
TRATOR 6X4 / 440E42 T TRATOR 4X2 / 450E37

500305103 HEADLIGHT L.H. EUROTECH
FAROL DIANTEIRO L.E. EUROTECH
015546
4861794
4861341
4861329



EUROTECH / 450E37 TRATOR 4X2 / 740E42 TZ
TRATOR 6X4 / 440E42 T TRATOR 4X2 / 450E37

500340503 HEADLIGHT R.H.
FAROL DIANT. L.D. EUROCARGO/TECTOR
015721



EUROCARGO /

500340543 HEADLIGHT L.H.
FAROL DIANT. L.E. EUROCARGO/TECTOR
015722



EUROCARGO /

504020189 HEADLIGHT R.H. STRALIS/
FAROL L.D. N.STRALIS/STRALIS/N.TRAKKER
015513



NOVO STRALIS / STRALIS / NOVO TRAKKER /
TRAKKER / 450S42 TP TRATOR 4X2 / 450S42

504020193 HEADLIGHT L.H. STRALIS/
FAROL L.E. N.STRALIS/STRALIS/N.TRAKKER
015512



NOVO STRALIS / STRALIS / NOVO TRAKKER /
TRAKKER / 450S42 TP TRATOR 4X2 / 450S42

504032145 FOG LIGHT R.H./L.H.
FAROL NEBLINA EXT. L.D./L.E. STRALIS
015491



450S42 TP TRATOR 4X2 / 450S42 HR TRATOR
4X2 / 450S42 T TRATOR 4X2 / 200S42

504032148 FOG LIGHT R.H./L.H.
FAROL NEBLINA INT. L.D./L.E. STRALIS
015550



450S42 TP TRATOR 4X2 / 450S42 HR TRATOR
4X2 / 200S42 CAMINHAO 4X2 / 450S42 T

504181095 FOG LAMP N. STRALIS
FAROL AUX. NEBLINA INTERNO N.STRALIS
016518



NOVO STRALIS / CURSOR /

504238093 HEADLIGHT R.H. STRALIS/
FAROL L.D. N.STRALIS/STRALIS/N.TRAKKER
024454



504238117 HEADLIGHT L.H. STRALIS/
FAROL L.E. N.STRALIS/STRALIS/N.TRAKKER
024453



5.02 LANTERNA LANTERN

504047264 MARKER LIGHT
LANTERNA TAPA SOL S/ SOQ. L.E. STRALIS/
017428



STRALIS / EUROTRAKKER / NOVO TRAKKER /
EUROTECH /

69500591 REAR LAMP RH NEW DAILY
LANTERNA TRASEIRA L.E. N.DAILY
025824



5.03 LENTE LEN

504238117 X HEAD LAMP LENS LH
LENTE FAROL L.E. STRALIS
025804
504238093 X



93161844 REAR LAMP LENS RH/LH
LENTE TRASEIRA L.D./L.E. STRALIS/
025830



5.04 PALHETA / BRACO

BLADE / ARM

42302246 WINDSHIELD WIPER BLADE

PALHETA LIMPADOR PARABRISA IVECO
027569



5.05 VALVULA

VALVE

503120500 SOLENOID VALVE =24V=

VALVULA SOLENOIDE PARADA MOTOR=24V=
020095



170E21 4X2 EURO CARGO /

6.01 FAROL HEAD LAMP

9408200056 FOG LAMP LH AXOR
FAROL AUXILIAR L.E.=AXOR=
025533



9408200156 FOG LAMP RH AXOR
FAROL AUXILIAR L.D.=AXOR=
025534



9408200161 HEAD LAMP LR AXOR
FAROL PRINCIPAL L.E.=AXOR=
025532



9408200261 HEAD LAMP RH AXOR
FAROL PRINCIPAL L.D.=AXOR=
025531



9438201461 HEADLAMP LH ACTROS
FAROL PRINCIPAL L.E. ACTROS(2009-2015)
025541



6.02 LANTERNA LANTERN

9408200321 FRONT LIGHT W/ SOCKET
LANTERNA DIANT. C/SOQUETE L.E. MBB
025773



9408200421 TURN SIGNAL LIGHT W/
LANTERNA DIANT. C/SOQUETE L.D. MBB
025543



6.03 MOLDURA FRAME

9408850922 HEAD LAMP FRAME LH
MOLDURA FAROL L.E. AXOR
025809



6.04 PALHETA / BRACO BLADE / ARM

0008203645 WINDSHIELD WIPER BLADE
PALHETA LIMPADOR PARABRISA MBB
027573
3818240126
0018207345
0018201245
0008209745
0008203745
A3818240126



6.05 POLIA
PULLEY

3431557215 ALTERNATOR PULLEY
POLIA ALTERNADOR (1 CANAL) OM 366/FPN
014051



OM366 / OM366G / OM364LA / OM366 LA /

7.01 VALVULA SOLENOIDE

SOLENOID VALVE

6112401105009 SOLENOID VALVE =24V=
VALVULA SOLENOIDE PARADA MOTOR=24V=
020093



8.01 PALHETA / BRACO
BLADE / ARM

1542873 WINDSHIELD WIPER BLADE

PALHETA LIMPADOR PARABRISA DAF

027568
911212



9.01 PALHETA / BRACO

BLADE / ARM

812664400029 WINDSHIELD WIPER BLADE

PALHETA LIMPADOR PARABRISA MAN

027570

81264406035

81264400068

81264400063



Vendas / Sales: vendas@cipec.com.br
Geral / General: cipec@cipec.com.br
Televendas / Phone: +55 19 3834-9822
Fax / Fax: 0800.707.9822
www.cipec.com.br

203473	3	1940919	6
233200	8	2241828	4
279732	8	2241829	4
285905	5	2380954	5
289927	6	2380955	5
289928	6		
290151	4		
290709	3		
290950	5		
290951	5		
290955	5		
293091	7		
293092	7		
331946	7		
334470	8		
347893	3		
353621	5		
353628	5		
360248	3		
365015	5		
365372	8		
371910	5		
386064	7		
389202	4		
397946	5		
532296	5		
537034	4		
537036	4		
1112819	8		
1115952	3		
1308161	8		
1327015	3		
1347401	7		
1357522	7		
1358833	8		
1362693	3		
1371444	3		
1371829	8		
1374052	8		
1380036	7		
1386087	6		
1387022	8		
1401789	8		
1402448	3		
1425019	3		
1440499	8		
1442292	6		
1442293	6		
1446354	4		
1446356	4		
1446583	6		
1446584	6		
1491408	8		
1508180	5		
1508181	5		
1549815	6		
1732509	4		
1732510	4		
1732515	4		
1747981	5		
1756751	5		
1756754	5		
1777165	8		
1784669	6		
1784670	6		
1798980	5		
1862890	8		
1889273	6		
1892322	4		
1892324	4		

465145 V	13
946176 V	9
1087960 V	10
1087962 V	10
1578133 V	10
1578702 V	10
1578704 V	11
1594042 V	11
1594959 V	9
1624133 V	9
1662938 V	13
3176549 V	12
3176550 V	12
3181369 V	11
3197870 V	11
3197871 V	11
3981460 V	11
3981461 V	11
3981594 V	10
3981666 V	11
3981782 V	11
3985008 V	13
20360898 V	10
20379428 V	12
20382517 V	9
20409875 V	11
20425122 V	12
20425732 V	11
20452848 V	10
20507623 V	11
20537743 V	12
20752914 V	9
20752918 V	9
20752919 V	9
20818763 V	10
20818771 V	10
20850557 V	13
21035637 V	10
21035638 V	10
21035690 V	10
21095380 V	11
21221153 V	10
21221154 V	10
21243844 V	9
21297917 V	10
21297918 V	10
21761283 V	11
21761288 V	11
82114500 V	11
82114506 V	11
82304585 V	10
82304599 V	10
82355678 V	11

0289195011	15
690949103	14
2R0145299	14
2T2145299A	14
2V5955425	15
T12945223A	14
T12953141	14
TAR953235 O	14
TJG899441	14
TJG953277	15



81DB5K353BA	16
86HU13368AA	16
TAR953235 O	16

42302246	18
69500591	17
93161844	17
500305102	17
500305103	17
500340503	17
500340543	17
503120500	18
504020189	17
504020193	17
504032145	17
504032148	17
504047264	17
504181095	17
504238093	17
504238117	17
504238117 X	17

0008203645	19
3431557215	20
9408200056	19
9408200156	19
9408200161	19
9408200261	19
9408200321	19
9408200421	19
9408850922	19
9438201461	19

6112401105009

21



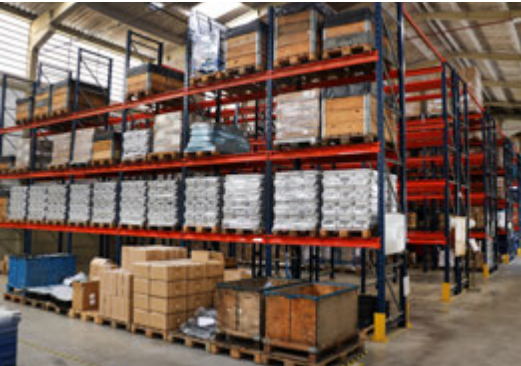
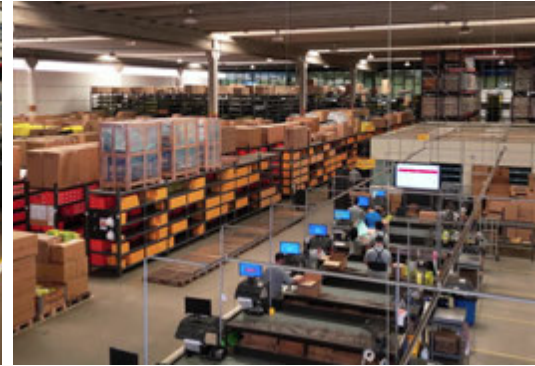
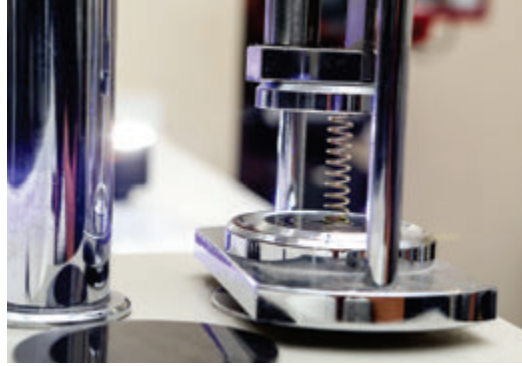
Teleendas: + 55 19 3834.9822



+ 55 54 3211.1800



+ 55 11 2626.8839





www.cippec.com.br

EMPRESA CERTIFICADA
CERTIFIED COMPANY **ISO 9001:2015**

Conheça toda nossa Linha de Produtos

- **Scania**
- **Volvo**
- **Iveco**
- **VW**
- **Mercedes**
- **Freios**



GRUPOCIPEC