



**CATÁLOGO PEÇAS DE REPOSIÇÃO**  
*Spare Parts Catalogue*

**BOMBAS D'ÁGUA**  
*Water Pumps*

[www.cipec.com.br](http://www.cipec.com.br)

EMPRESA CERTIFICADA  
CERTIFIED COMPANY ISO 9001:2015

# Empresa

## Company | La Empresa

A Cipec iniciou suas atividades em 1983 na cidade de São Caetano como um pequeno distribuidor e fabricante de peças de reposição para caminhões e ônibus. Trabalhando com empenho e seriedade, a Cipec rapidamente ampliou seu leque de produtos de distribuição, alcançando logo em seguida o status de referência nacional no mercado de reposição da linha Scania.

Em 1999, devido ao ritmo crescente dos negócios, a estrutura da Cipec já não comportava a demanda, levando a empresa a transferir suas atividades para uma área de 20.000 m<sup>2</sup> em Indaiatuba, localizada estrategicamente no interior paulista. Nesse novo local, a empresa investiu fortemente na parte fabril e agregou as linhas Volvo, VW, MWM, Cummins e Iveco.

Com amplo espaço fabril e novos nichos de mercado se abrindo, em 2003 a Cipec inovou mais uma vez, implantando uma completa linha de servos de embreagem, válvulas e reparos de freios para linha pesada. Surgiu então a NTI, uma marca Cipec que em pouco tempo ficaria conhecida no mercado, oferecendo um produto competitivo e altamente confiável.

Atualmente, a Cipec conta com mais de 170 colaboradores e comercializa mais de 22.000 itens a partir de sua unidade fabril localizada em Indaiatuba, ampliando ainda mais sua capacidade de produção e expedindo mais de 30 toneladas de produtos por dia para mais de 50 países em todo o mundo.

Cipec began its activities in 1983 in the city of São Caetano as a small distributor and manufacturer of spare parts for trucks and buses. Working with dedication and seriousness, Cipec quickly expanded its range of distribution products and soon achieved national reference status in the replacement market for the Scania line.

By 1999, its structure could no longer accommodate the growing pace of business, prompting Cipec to transfer its operations to a 20,000 m<sup>2</sup> area in Indaiatuba, strategically located in the interior of São Paulo. Strong investments were made in the manufacturing sector, and the Volvo, VW, MWM, Cummins, and Iveco lines were added.

With ample manufacturing space and new market niches emerging, Cipec innovated once again in 2003, introducing a complete line of clutch servos, valves, and brake repair kits for heavy-duty applications. Thus, NTI was born, a Cipec brand that quickly became known in the market, offering competitive and highly reliable products.

Today, Cipec employs over 170 employees and sells over 22,000 items from its manufacturing facility located in Indaiatuba, further increasing its production capacity and shipping over 30 tons of products per day to more than 50 countries worldwide.

La Cipec inició sus actividades en 1983 en la ciudad de São Caetano como un pequeño distribuidor y fabricante de repuestos para camiones y autobuses. Trabajando con dedicación y seriedad, Cipec amplió rápidamente su gama de productos de distribución y pronto alcanzó el estatus de referencia nacional en el mercado de repuestos para la línea Scania.

Para 1999, su estructura ya no podía soportar el creciente ritmo de negocios, lo que llevó a Cipec a trasladar sus operaciones a una área de 20,000 m<sup>2</sup> en Indaiatuba, estratégicamente ubicada en el interior de São Paulo. Se realizaron fuertes inversiones en el sector manufacturero y se añadieron las líneas Volvo, VW, MWM, Cummins y Iveco.

Con un amplio espacio de fabricación y nuevos nichos de mercado emergentes, Cipec innovó una vez más en 2003, introduciendo una línea completa de servos de embrague, válvulas y reparaciones de frenos para aplicaciones de servicio pesado. Así nació NTI, una marca de Cipec que rápidamente se hizo conocida en el mercado, ofreciendo productos competitivos y altamente confiables.

Hoy en día, Cipec emplea a más de 170 trabajadores y vende más de 22,000 artículos desde su planta de fabricación ubicada en Indaiatuba, aumentando aún más su capacidad de producción y enviando más de 30 toneladas de productos al día a más de 50 países en todo el mundo.



AGRALE	05
DAF	06
FORD	07
IVECO	09
MERCEDES	11
SCANIA	18
VOLVO	22
VW	25
CONTATOS	28

AGRALE	05
DAF	06
FORD	07
IVECO	09
MERCEDES	11
SCANIA	18
VOLVO	22
VW	25
CONTACTS	28

AGRALE: 6008001249009

B'B D'AGUA MWM 4.0 TCA 4 CIL

WALTER PUMP MWM

AGRALE: 6008001249009  
CIPEC: 022171

AGRALE | VOLARE A6 PRIMEIRA EDICAO | VOLARE W9 FLY-EURO V



AGRALE: 6008001589008

B'B D'AGUA MWM SPRINT 4 CIL-MOD.

WATER PUMP CUMMINS EURO-3 3.9L 4CYL.

AGRALE: 6008001589008 / UB0575  
CIPEC: 022176

AGRALE | MA 6.0 | MOTOR MWM 4.07TCE 4C | VOLARE A5 | VOLARE A6 | VOLARE V5E |  
VOLARE V5E TRONIC MWM SPRINT 4.07 TCE



AGRALE: 6013501100009

B'B D'AGUA MWM SPRINT 4 CIL-MOD. 5-140-8150 DELIVE

WATER PUMP CUMMINS EURO-3 3.9L 4CYL.

AGRALE: 6013501100009  
CIPEC: 020911

AGRALE



AGRALE: 8005101460009

B'B D'AGUA MWM 3/4/6 CIL D229 ASP.

WATER PUMP MWM 4/6 CYL. SIMPLE

AGRALE: 8005101460009 / 8012201076004  
CIPEC: 022504

AGRALE | 7000D | 7500TD



**DAF: 1828162**

B'B D'AGUA DAF CF85/XF95/XF105

WATER PUMP DAF CF85/XF95/XF105

CIPEC: 027097  
DAF: 1639196 / 163996 / 1644762 / 1649082 / 1664762 / 1738991 / 1778280 /  
1778280R / 1828162 / 1828162A / 1828162R / 1853298S / 1853299S /  
1853300S / 1853301S  
DAF | CF85 | XF 95 | XF105



## FORD: BF9T8501BA

B'B D'AGUA MWM 4.0 TCA 4 CIL

WALTER PUMP MWM

CIPEC: 022170

FORD: BF9T8501BA / UB0577

FORD | F1000 | F250 | F250XL/XLT | F350 | F350 4.2 V6



## FORD: BF9X8501AA

B'B D'AGUA CUMMINS 8.3L SERIE C

WATER PUMP CUMMINS 8.3L SERIE C

CIPEC: 021122

FORD: 3285323DX / BF9X8501AA / BG1X8501AA / BG1X8K501AA

FORD | CARGO 1422 | CARGO 1617 | CARGO 1622 | CARGO 1630 | CARGO 2322 | CARGO 2422 | CARGO 2422 6X4 | CARGO 2425 | CARGO 2630 | CARGO 3224 | CARGO 3530 | CARGO 3660 | CARGO 4030



## FORD: BG5X8501AA

B'B D'AGUA MOTOR CUMMINS ELETRONICO

WATER PUMP CUMMINS ELECTRONIC

CIPEC: 021546

FORD: 5294721 / BG5X8501AA / BH1X8501AA / UB0734

FORD | 1119 FORD CARGO | 1319 4X2 | 1419 4X2 | 1519 4X2 | 1719 4X2 | 1723 4X2 | 1729 4X2 | 2423 6X2 | 2429 6X2 | 2623 6X4 | 2629 6X4 | 816



## FORD: WD5T8501A

B'B D'AGUA MWM 3/4/6 CIL D229 ASP.

WATER PUMP MWM 4/6 CYL. SIMPLE

CIPEC: 020871

FORD: WD5T8501A

FORD | F1000 TB MWM 229 | F11000 | F12000 | F12000 MWM 229 | F13000 | F14000HD | F19000 | F21000 | F22000 | F350 | F4000 MWM 229 | F4000 MWM NA | F600 | F7000



**IVECO: 500300476**

B'B D'AGUA DAILY

WATER PUMP - DAILY

CIPEC: 015817  
 IVECO: 2995624 / 5000297602 / 500300476 / 50030476 / 500361203 /  
 500361370 / 500361455 / 500361540 / 500361919 / 501849884 / 503644438 /  
 98438356 / 98438357 / 99438900 / 99448066 / 99448068 / MNKBA10735 /  
 NKBA14011  
 IVECO | DAILY | DAILY/SCUDATO



**IVECO: 504062854**

B'B D'AGUA MOTOR CUMMINS ELETR. TECTOR/EUROCARGO

WATER PUMP CUMMINS ELECTRONIC

CIPEC: 018094  
 IVECO: 504062854  
 IVECO | EUROCARGO | TECTOR



**IVECO: 504113544**

B'B D'AGUA N.DAILY

WATER PUMP NEW DAILY

CIPEC: 015862  
 IVECO: 504087367 / 504113544 / 504337182 / 504360207 / 504369725  
 IVECO | N.DAILY | N.DAILY SCUDATO



**IVECO: 5801807827**

B'B D'AGUA STRALIS/TRAKKER/EUROTECH

WATER PUYMP STARLIS/TRAKKER/EUROTECH

CIPEC: 027096  
 IVECO: 500356553 / 5801807827 / 5801931139  
 IVECO



**MERCEDES: 3142000601**

B'B D'AGUA MERCEDES OM 314 4CIL

WATER PUMP MERCEDES

CIPEC: 007823  
 MERCEDES: 3142000601 / 3142000604 / 3142002901 / UB0608  
 CBT | TRATOR 1065 | TRATOR 2080 | MERCEDES | 608 | 608 D | 708 | 708 D/E | L608 | L608D | L608E | L708 | L708D | L708E | TOYOTA | JEEP/BANDEIRANTES



**MERCEDES: 3452000201**

B'B D'AGUA MERCEDES OM 355 5/6CIL

WATER PUMP ASSY OM-355

CIPEC: 022402  
 MERCEDES: 3452000201  
 MERCEDES | 1519 | 1924 | 1929 | 2219 | O355 | O364 | OH1419 | OH1517



**MERCEDES: 3452000801**

B'B D'AGUA MERCEDES OM 355 5/6CIL

WATER PUMP ASSY OM-355

CIPEC: 022401  
 MERCEDES: 3452000801  
 MERCEDES | 1932 | 1933 | 1934



**MERCEDES: 3452007101**

B'B D'AGUA MERCEDES OM 355 5/6CIL

WATER PUMP ASSY OM-355

CIPEC: 007828  
 MERCEDES: 20033 / 3452007101  
 MERCEDES | 1517 | 1519 | 2219 | O364 | OH1419



**MERCEDES: 3522003801**

B'B D'AGUA MBB C/TAMPA OM 352 6CIL (ROTOR 87,5MM)

WATER PUMP (UB-313)

CIPEC: 007825  
 MERCEDES: 3522003801 / 3522009401  
 MERCEDES | OM352



**MERCEDES: 3522003801 A**

B'B D'AGUA MERCEDES OM 352 6CIL

WATER PUMP (UB-313)

CIPEC: 022399  
 MERCEDES: 3522003801 A / 3522009401 A / UB0314  
 MERCEDES | 1111 | 1113 | 1116 | 1313 | 1314 | 1316 | 1513 | 1514 | 1516 | 2013 | 2014 | 2016 | 2213 | 2214 | 2216 | LPO1113 | O352 | O362 | OH1313 | OH1314 | OH1316



**MERCEDES: 3522005401**

B'B D'AGUA MERCEDES OM 352 6CIL

WATER PUMP MERCEDES

CIPEC: 007829  
 MERCEDES: 3522005401 / 3522009601  
 MERCEDES | 1113 | O362 | O364 | OF1113 | OF1313 | OH1313 | OH1316



**MERCEDES: 3522005401 A**

B'B D'AGUA MERCEDES OM 352 6CIL

WATER PUMP MERCEDES

CIPEC: 022404  
 MERCEDES: 3522005401 A / 3522009601 A / UB0362  
 MERCEDES | 1113 | O362 | O364 | OF1113 | OF1313 | OH1313 | OH1316



**MERCEDES: 3532000301**

B'B D'AGUA MERCEDES OM 352 6CIL

WATER PUMP MERCEDES

CIPEC: 007826

MERCEDES: 3532000301 / 3532003701

CASE | CARREGADEIRA W18 | CARREGADEIRA W20 | CARREGADEIRA W20B | CBT | TRATOR 1000 | TRATOR 1065 | TRATOR 1105 | TRATOR 2105 | TRATOR 2600 | TRATOR 8060 4X4 | CLARK | TRATOR 55 ARTICULADA | TRATOR 65R | TRATOR 714GUINDASTRE | TRATOR 75 | TRATOR 75HD | TRATOR 75III | EATON | TRATOR EATON 134A | TRATOR EATON 1500BM | TRATOR EATON 1900BM | ENGESA | CAMINHÃO ENGESA EE10 | CAMINHÃO ENGESA EE11 | CAMINHÃO ENGESA EE12 | CAMINHÃO ENGESA EE15 | CAMINHÃO ENGESA EE25 | CAMINHÃO ENGESA EE9 | FIAT | TRATOR FIAT 134BR | TRATOR FIAT 1500B | TRATOR FIAT 1900B | TRATOR FIAT 545 | TRATOR FIAT 545B | TRATOR FIAT 545H | TRATOR FIAT 645B | TRATOR FIAT 745 | TRATOR FIAT 745B | TRATOR FIAT 745H | TRATOR FIAT 945 | TRATOR FIAT 945B | TRATOR FIAT FG70 | TRATOR FIAT FG75 | TRATOR FIAT FR10 | TRATOR FIAT FR12 | KOMATSU | TRATOR D30E ESTEIRA | TRATOR D50A | MERCEDES | 1113 | 1116 | 1313 | 1314 | 1316 | 1513 | 1514 | 1516 | 2013 | 2014 | 2016 | 2213 | 2214 | 2216 | LPO1113 | O352 | O362 | OH1313 | OH1314 | OH1316 | NEW



**MERCEDES: 3532001101**

B'B D'AGUA MERCEDES OM 352/A 6CIL

WATER PUMP MERCEDES

CIPEC: 022405

MERCEDES: 3532001101

MERCEDES | 1113 | O362 | O364 | OF1113 | OF1313 | OH1313 | OH1316



**MERCEDES: 3532001101 A**

B'B D'AGUA MERCEDES OM 352/A 6CIL

WATER PUMP MERCEDES

CIPEC: 022406

MERCEDES: 3532001101 A / UB0364

MERCEDES | 1113 | O362 | O364 | OF1113 | OF1313 | OH1313 | OH1316



**MERCEDES: 3552001101**

B'B D'AGUA MERCEDES OM 355 5/6CIL

WATER PUMP ASSY OM-355

CIPEC: 022403

MERCEDES: 3522001501 / 3552001101

MERCEDES | OM355 | OM355 AFRICA



**MERCEDES: 3642000101**

B'B D'AGUA MERCEDES OM 364/A/LA 4CIL

WATER PUMP MB 364/A/LA

CIPEC: 007831

MERCEDES: 3642000101 / 3642002001 / UB0610

MERCEDES | 1114 | 1214 | 709 | 710 | 712 | 712C | 712E | 809 | 809 LO | 812 | 812 LO | 912 | 914 | 914C | LO809 | LO812 | LO814 | O-500 ARTICULADO | OF809 | OF812



**MERCEDES: 3662000701**

B'B D'AGUA MERCEDES OM 366 E 366A 6CIL

WATER PUMP OM-366. LA INTERCOOL

CIPEC: 022407

MERCEDES: 3662000701 / 3662005901

MERCEDES | 1214 | 1218 | 1315 | 1318 | 1414 | 1418 | 1614 | 1618 | 1620 | 1621 | 1714 | 1718 | 1721 | 2314 | 2318 | 2418 | O371 | OF1115 | OF1313 | OF1317 | OF1318 | OS1313



**MERCEDES: 3662000701 A**

B'B D'AGUA MERCEDES OM 366A 6 CIL

WATER PUMP OM-366. LA INTERCOOL

CIPEC: 022408

MERCEDES: 3662000701 A / 3662005901 A / UB0366

MERCEDES | 1214 | 1218 | 1315 | 1318 | 1414 | 1418 | 1614 | 1618 | 1620 | 1621 | 1714 | 1718 | 1721 | 2314 | 2318 | 2418 | O371 | OF1115 | OF1313 | OF1317 | OF1318



**MERCEDES: 3662005601 A**

B'B D'AGUA MERCEDES OM 366 6 CIL (ECOLOGIC)

WATER PUMP OM-366. LA INTERCOOL

CIPEC: 022410

MERCEDES: 3662005601 A / 3762000001 A / 3762000501 A / 3762000601 A / 3762000701 A

MERCEDES | L1620 | LK1620 | OF1318 | OF1620 | OF1721 | OH1420



**MERCEDES: 3662006801**

B'B D'AGUA MERCEDES OM 366LA 6CIL (INTERCOOLER)

WATER PUMP OM-366. LA INTERCOOL

CIPEC: 007834

MERCEDES: 3662006801 / 3762000901

MERCEDES | 1418 | 1418A | 1418AK | 1418K | 1623 | 1718A | 1718K | 1720 | 1720K | 1723 | 1723S | L1218 | L1418 | L1620 | LK1620 | LS1623 | O371 UL | OF1620



**MERCEDES: 3662006801 A**

B'B D'AGUA MERCEDES OM 366LA -INTERC. 6CIL

WATER PUMP OM-366. LA INTERCOOL

CIPEC: 022409

MERCEDES: 3662006801 A / 3762000901 A / UB0368

MERCEDES | 1418 | 1418A | 1418AK | 1418K | 1623 | 1718A | 1718K | 1720 | 1720K | 1723 | 1723S | L1218 | L1418 | L1620 | LK1620 | LS1623 | O371 UL | OF1620



**MERCEDES: 3762000501**

B'B D'AGUA MERCEDES OM 366LA ECOLOGIC

WATER PUMP L-1620 OM-366 ECOL.

CIPEC: 007833

MERCEDES: 3662005601 / 3762000001 / 3762000501 / 3762000601 / 3762000701

MERCEDES | L1620 | LK1620 | OF1318 | OF1620 | OF1721 | OH1420



**MERCEDES: 4572000101**

B'B D'AGUA MERCEDES OM 447A/LA

WATER PUMP OM-447/449

CIPEC: 022411

MERCEDES: 4572000101 / 4572004701 / 4572007001

MERCEDES | 1938S | AXOR2035 | AXOR2040 | AXOR2044 | AXOR2540 | AXOR2544 | AXOR2640 | AXOR2644 | AXOR3340 | AXOR3344 | AXOR4140 | AXOR4144 | L1625 | L1938 | L2325 | L2638 | LB2325 | LK2325 | LK2628 | LK2635 | LS1625 | LS1630 | LS1632 | LS1633 | LS1634 | LS1634 EL | LS1929 | LS1935 | LS1938 | LS1941 | LS2635 | LS2638 | O371 R | O371 RS | O371 RSD | O371 RSE | O371 RSL | O400 R | O400 RSD | O400 RSDH | O400 RSE | O400 UP | O500 RS 1636 | O500 RSD 2036 | O500 RSD 2242 | OH1625 L | OH1628 L | OH1635 L | OH1636 L



**MERCEDES: 4572000201**

B'B D'AGUA MERCEDES OM 447A/LA ELETRON.

WATER PUMP OM-447/449

CIPEC: 022412

MERCEDES: 4572000201

MERCEDES | L1938 | L2638 | LK2638 | LS1938 | LS2638 | O400 UPA | O500 2836GL | O500 2836GLE | O500 RS 1636 | O500 RSD 2036



**MERCEDES: 4602000001**

B'B D'AGUA MERCEDES OM 457LA/OM 460

WATER PUMP OM-447/449

CIPEC: 022413

MERCEDES: 4602000001

MERCEDES | 1938S | 1944S



**MERCEDES: 4752000201**

B'B D'AGUA MERCEDES OM 447A/LA

WATER PUMP OM-447/449

CIPEC: 007832

MERCEDES: 4752000001 / 4752000101 / 4752000201

MERCEDES | 1938S | AXOR2035 | AXOR2040 | AXOR2044 | AXOR2540 | AXOR2544 | AXOR2640 | AXOR2644 | AXOR3340 | AXOR3344 | AXOR4140 | AXOR4144 | L1625 | L1938 | L2325 | L2638 | LB2325 | LK2325 | LK2635 | LK2638 | LS1625 | LS1630 | LS1632 | LS1633 | LS1634 | LS1634 EL | LS1929 | LS1935 | LS1938 | LS1941 | LS2635 | LS2638 | O371 R | O371 RS | O371 RSD | O371 RSE | O371 RSL | O400 R | O400 RSD | O400 RSDH | O400 RSE | O400 UP | O500 RS 1636 | O500 RSD 2036 | O500 RSD 2242 | OH1625 L | OH1628 L | OH1635 L | OH1636 L



**MERCEDES: 9042002501**

B'B D'AGUA O904/0906

WATER PUMP O904/0906

CIPEC: 007974

MERCEDES: 9042000201 / 9042000701 / 9042002201 / 9042002501 / 9042003201

MERCEDES | 1215C | 1218EL | 1318 | 1418EL | 1718M | 1728 | 2423B | 2423K | 2428 | 712C | 914 | 914C | 915 | 915E | ACCELO915C | ATEGO1315 | ATEGO1418 | ATEGO1518 | ATEGO1718 | ATEGO1725 | ATEGO1728 | ATEGO2425 6X2 | ATEGO2428 | L1218 | L1418 | L1622 | LO914 | LO915 | O500 M 1725 | O500 M 1728 | O500 U 1725 | OF1417 | OF1418 | OF1722 | OF1722 M



**MERCEDES: 9062005701**

B'B D'AGUA MERCEDES OM 926LA - 6CIL

WATER PUMP OM 926LA - 6 CYL.

CIPEC: 022414

MERCEDES: 9062004201 / 9062004801 / 9062005701

MERCEDES | 1215C | AXOR1933 | AXOR2533 | AXOR2825 | AXOR2826 | AXOR2828 | AXOR2831 |  
O500 M | O500 R | O500 U | OF1115 | OF1218 | OF1219 | OF1721 | OF1722 | OF1723 | OF1724 |  
OF1726 | OF1730 | OH1418 | OH1518 | OH1519 | OH1521 | OH1523 | OH1621 | OH1622 | OH1623 |  
OH1626



SCANIA: 1338490

B'B D'AGUA P93

WATER PUMP P93

CIPEC: 014376  
 SCANIA: 10571067 / 1338490 / 1377571 / 1571067 / 347963 / 369902 / 397957 /  
 571065 / 571066 / 571067  
 SCANIA | P93



SCANIA: 1380897

B'B D'AGUA S4 P94

WATER PUMP SCANIA P-94

CIPEC: 007817  
 SCANIA: 1380897 / 14375 / 1486098 / 1510490  
 SCANIA | 94 | F94 | K94



SCANIA: 139007

B'B D'AGUA 110

WATER PUMP 110

CIPEC: 000240  
 SCANIA: 139007  
 SCANIA | 110 | B75 | B76 | L75 | L76



SCANIA: 1450153

VOLUTA B'B D'AGUA S.4

WATER PUMP HOUSING SERIE 4

CIPEC: 006213  
 SCANIA: 1376495 / 1450153  
 SCANIA | 114 | 124 | 94 | K124 | K94



SCANIA: 1508533

B'B D'AGUA S4 114/24

WATER PUMP SERIE 4

CIPEC: 006592  
SCANIA: 0552000 / 10570951 / 10570955 / 1353072 / 1508533 / 1570951 /  
1570955 / 1896752 / 508533 / 570951 / 570955 / 570962  
SCANIA | 114 | 124 | 94 | K114 | K124 | K94



SCANIA: 1508533 B

B'B D'AGUA S4 114/24 =C/VOLUTA=

WATER PUMP S4 114/24

CIPEC: 014372  
SCANIA: 0552000 B / 1353072 B / 1508533 B  
SCANIA



SCANIA: 1528348

VOLUTA B'B' D'AGUA S.5

WATER PUMP HOUSING SERIE 5

CIPEC: 012945  
SCANIA: 1528348 / 1787121  
SCANIA | 114 | 124 | 94 | K124 | K94 | P.G.R.



SCANIA: 1789522

B'B D'AGUA S4 =APOS 2005=

WATER PUMP S4 AFTER 2005

CIPEC: 011879  
SCANIA: 10570959 / 10570964 / 1399322 / 1516037 / 1533783 / 1546188 /  
1570959 / 1787120 / 1789522 / 546188 / 570964 / 570965 / 57959  
SCANIA | 114 | 124 | 94 | K114 | K124 | K94 | P.G.R.



**SCANIA: 1789522 B**

B'B D'AGUA S4 -APOS 2005= C/VOLUTA=

WATER PUMP S4 -AFTER 2005=

CIPEC: 014373  
SCANIA: 1546188 B / 1787120 B / 1789522 B  
SCANIA



**SCANIA: 2006397**

B'B D'AGUA MOTOR 440 CV P.G.R/N.T.G.

WATER PUMP 440 HP P.G.R.T.

CIPEC: 018847  
SCANIA: 10570193 / 10570194 / 1778923 / 1789555 / 1884327 / 1939481 /  
2006210 / 2006397 / 2034084 / 2224045 / 2224112 / 2310611 / 2310615 /  
570193 / 570194 / 575052 / 575053 / 576662 / 576663 / 576664 / 576665  
SCANIA | G440 | G480 | P.G.R. | R440 | R480



**SCANIA: 259065**

B'B D'AGUA 111

WATER PUMP 111

CIPEC: 001065  
SCANIA: 0553000 / 259065  
CASE | RETROSCAVADEIRA 150 | TRATOR 2470 | TRATOR 4440 | CLARK | TRATOR  
125ARTICULADA | EATON | TRATOR EATON 3000B | ENGESA | CAMINHAO ENGESA EE50 |  
FIAT | TRATOR FIAT AD14 | TRATOR FIAT FL4 | TRATOR FIAT FL4C | MASSEY FERGUSSON |  
TRATOR MF 4780 | SCANIA | B111 | BR116 | L101 | L111



**SCANIA: 292761**

B'B D'AGUA 112/3

WATER PUMP 112/113

CIPEC: 001259  
SCANIA: 0553001 / 10571059 / 10575100 / 1314406 / 1571059 / 1575100 /  
1672680 / 292761 / 524866 / 528906 / 571059 / 575100  
CASE | CARREGADEIRA W36 | CARREGADEIRA W36D | COLHEITADEIRA 7700 | TRATOR 4490  
2SERIE | FIAT | CAMINHAO FIAT 190 | SCANIA | F112 | F113 | K112 | K113 | L113 | R112 | R113 |  
T112 | T113



**SCANIA: 292762**

B'B D'AGUA 142 =S/ENGRENAGEM=

WATER PUMP 142 WITHOUT GEAR

CIPEC: 001260  
SCANIA: 292762 / 320592  
SCANIA | LK141 | R142 | R143 | T142 | T143



**SCANIA: 292762 A**

B'B D'AGUA 142 =C/ENGRENAGEM=

WATER PUMP 142 WITH GEAR

CIPEC: 003084  
SCANIA: 292762 A / 320592 A  
SCANIA | LK141 | R142 | T142



**VOLVO: 1699788 V**

B'B D'AGUA TURBO FRONTAL "N"

WATER PUMP VOLVO DC16/DC16 XPI

CIPEC: 027264  
 VOLVO: 1545248 V / 1698618 V / 1699788 V / 467686 / 467907 V / 5001797 V /  
 5002804 V / 8112521 V  
 VOLVO | N10



**VOLVO: 20505543 V**

VOLUTA B'B D'AGUA FH/FM/NH/MOTOR D12D/D13A

WATER PUMP HOUSING D12D/D13A FH/FM/NH

CIPEC: 018159  
 VOLVO: 20505543 V / 21284318 V / 22195464 V  
 VOLVO | FH | FM



**VOLVO: 20575653 V**

B'B D'AGUA ONIBUS B7R

WATER PUMP B7R BUS

CIPEC: 019888  
 VOLVO: 1001200 V / 1675561 V / 1675750 V / 20575653 V / 3183908 V /  
 3183909 V / 420759 V / 465884 V / 471500 V / 477397 V / 477770 V / 5003092 V /  
 5003093 V / 8112184 V / 8112185 V / 8112291 V / 8113522 V / 8113523 V /  
 8118184 V / 8119523 V / 8192050 V / 85000387 V  
 VOLVO



**VOLVO: 20744939 V**

B'B D'AGUA FH/D13A

WATER PUMP FH/D13A

CIPEC: 014367  
 VOLVO: 20451516 V / 20464403 V / 20538820 V / 20538845 V / 20744939 V /  
 20744940 V / 21221878 V / 21228793 V / 21296100 V / 21468471 V / 21615952 /  
 21615952 V / 2201101 V / 22195450 V / 22197705 V / 22902431 V / 24070789 V /  
 3161436 V / 3801102 V / 3801418 V / 85000062 V / 85000347 / 85000347 V /  
 85000486 V / 85003125 V / 85003708 V / 85006062 V / 85020085 V / 85021450  
 V / 85023583 V / UB0985 V  
 VOLVO | B9L | B9R | B9S | FH | FH16 | FM | FM9



**VOLVO: 21828721 V**

B'B D'AGUA MWM

WATER PUMP FOR MWM ENGINE

CIPEC: 023532  
VOLVO: 21828721 V  
VOLVO | VM 210 4X2



**VOLVO: 21960479 V**

B'B D'AGUA FH13 EURO5 MOTOR D13C/13K POLIA 155MM

WATER PUMP FH13 EURO 5 ENG.D13/13K PULEY 155MM

CIPEC: 024329  
VOLVO: 20920085 V / 20921917 V / 21030340 V / 21648708 V / 21814009 V /  
21814036 V / 21960479 V / 21969183 V / 22164104 V / 22479364 V / 23959585  
V / 85000956 V / 85013056 V / 85013425 V / 85013466 V  
VOLVO



**VOLVO: 21974080 V**

B'B D'AGUA FM11/13 EURO5 MOTOR D13C/11K POLIA 148M

WATER PUMP FM11 ERURO 5 ENGINE D13C/11K PULLEY 148

CIPEC: 025048  
VOLVO: 20921947 V / 20921951 V / 21643286 V / 21648712 V / 21648716 V /  
21781059 V / 21812242 V / 21812257 V / 21941088 V / 21969187 V / 21969188  
V / 21974078 V / 21974080 V / 22164101 V / 23959595 V / 85020130 V /  
85023492 V / 85026130 V  
VOLVO



**VOLVO: 8121802 V**

B'B D'AGUA EIXO FINO NL10/12/B12

WATER PUMP NL10/12/B12

CIPEC: 003337  
VOLVO: 1545261 V / 1675945 V / 1698616 V / 1698620 V / 1699786 V /  
1699790 V / 20431484 V / 3184802 V / 3803537 V / 422791 V / 468250 V /  
468937 V / 470232 V / 478405 V / 478845 V / 479164 V / 479931 V / 5002225 V /  
5002764 V / 5003351 V / 8112219 V / 8112520 V / 8112523 V / 8112683 V /  
8113157 V / 8113431 V / 8121802 V / 8149937 V  
VOLVO



**VOLVO: 8149941 V**

B'B D'AGUA FH D12A

WATER PUMP VOLVO FH D12A

CIPEC: 027257  
 VOLVO: 1001698 V / 1547155 V / 8112275 V / 8112555 V / 8112775 V /  
 8113117 V / 8148460 V / 8149941 V  
 VOLVO



**VOLVO: 8170305 V**

B'B D'AGUA FH/D12C

WATER PUMP FH/D12C

CIPEC: 014014  
 VOLVO: 20431135 V / 20431137 V / 20431151 V / 20713787 V / 20713954 V /  
 20734268 V / 3803909 V / 81070305 V / 8113274 V / 8113275 V / 8170305 V /  
 8170460 V / 8170833 V / 85000076 V / 85000452 V / 85000786 V /  
 MNKBA06580 V / UB0112 V  
 VOLVO



**VOLVO: 85000957 V**

B'B D'AGUA EURO5/6 FH/FM (POLIA 124MM)

WATER PUMP EURO 5/6 VOLVO FH/FM

CIPEC: 027285  
 VOLVO: 20920065 V / 21648711 V / 21814005 V / 21814040 V / 21960481 V /  
 22479362 V / 23959580 V / 85000957 V / 85013057 V / 85013427 V  
 VOLVO



**VW: 2P0121004**

B'B D'AGUA MWM SPRINT 4 CIL-MOD. 5-140-8150 DELIV

WATER PUMP CUMMINS EURO-3 3.9L 4CYL.

CIPEC: 013685  
 VW: 2P0121004 / 940807310015 / UB0574  
 VW | 5.140 | 8.150 EOD | 8.150 MWM DELIVERY | MOTOR MWM 4.08TCE 4C



**VW: 2RB121005**

B'B D'AGUA MWM 3/4/6 CIL D229 ASP.

WATER PUMP MWM 4/6 CYL. SIMPLE

CIPEC: 004904  
 VW: 03618992 / 2R0121004C / 2R0121004E / 2RB121005 / 75202649 / 922507310015 / 922987310016 / 922987310026 / UB0576  
 AGRALE | 1600D | 1800D | 4500D | 4500RD | 5000D | 5000RD | 7000D | 7000RS | BX130 | BX90 | CASE | COLHEITADEIRA 660 | ESCAVADEIRA 75BR | ESCAVADEIRA 80CR | ESCAVADEIRA 80P | ESCAVADEIRA LC | ESCAVADEIRA LY2P | ESCAVADEIRA LY80 | ESCAVADEIRA LYC | ESCAVADEIRA TCS | RETROESCAVADEIRA 80 | CBT | TRATOR 1000 | TRATOR RODAS 8440 | DODGE | CAMINHAO D1400TD | CAMINHAO D750 | CAMINHAO D950 | CAMINHAO D950D | CAMINHAO D950S | DYNAPAC | ROLO COMPAC.CA15 | ROLO COMPAC.CF44 | ROLO COMPAC.CF66 | ROLO COMPAC.CH44 | ROLO COMPAC.CH66 | ENGESA | TRATOR FLORES.EE510 | FIAT | ESCAVAD.FIAT FE105 | ESCAVAD.FIAT FR10B | ESCAVAD.FIAT FR11B | ESCAVAD.FIAT FR12B | ESCAVADEIRA FIAT S90 | TRATOR ESTE.FIAT 7B | TRATOR ESTE.FIAT 7D | TRATOR ESTE.FIAT TA | TRATOR FIAT FA120 | TRATOR FIAT FB80 | TRATOR FIAT FD9 | TRATOR FIAT FD9B |



**VW: 2RK121005**

B'B D'AGUA CUMMINS 8.3L SERIE C

WATER PUMP ENGINE 8.3L SERIE C - CUMMINS

CIPEC: 004907  
 VW: 2RK121005 / 2RK121005A / 2S0121004 / 2S0121004A / 2S0121004C / 2S0121004E / 2S0121005 / 3285323 / TE3121005 / TF3121005 / UB0732  
 VW | 14.210 | 14.220 | 16.170 | 16.210 | 16.220 | 16.220 LEITO | 16.300 | 17.180 CUMMINS EURO 3 | 17.220 | 17.220 CUMMINS EURO 3 | 17.300 | 17.310 | 18.310 | 18.310OT | 23.220 | 24.220 CUMMINS EURO 3 | 24.250 | 26.220 | 26.260 | 26.300 | 26.310 | 35.300 | 35.300H | 40.300



**VW: 2S0121004B**

B'B D'AGUA MOTOR CUMMINS ELETRONICO

WATER PUMP CUMMINS ELECTRONIC

CIPEC: 012937  
 VW: 2R0121004 / 2S0121004B / 4891252  
 IVECO | 170E25 CAMINHAO 4X2 | 170E25 T CAMINHAO 4X2 | 230E24 TECTOR 6X2 | 260E25 CAMINHAO 6X4 | VW | 13.170E | 13.180 | 15.170E | 15.190E | 17.250E | 17.260EOT | 23.250E | 8.150E | 9.150EOD



**VW: 940707310035**

B'B D'AGUA MWM 4.0 TCA 4 CIL

WALTER PUMP MWM

CIPEC: 007804

VW: 0105002 / 73102 / 940707310035

AGRALE | FURGOVAN 6000 | TRUCK 6000D | VOLARE A5 | VOLARE A6 | FORD | F1000 | F250 | F350 | MOTOR MWM 4.07TCA | GM | BLAZER 2.8 | GMC 3.500 HD | GMC 6.140 | GMC 6.150 | GRAND BLAZER 4.2 | S10 2.8 | SILVERADO | TROLLER | JIPE TROLLER T4 | VW

**VW: 940707310055**

B'B D'AGUA MWM SPRINT 4 CIL-MOD.

WATER PUMP CUMMINS EURO-3 3.9L 4CYL.

CIPEC: 019384

VW: 940707310055

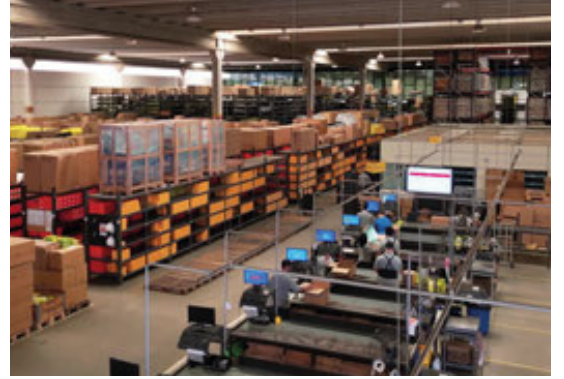
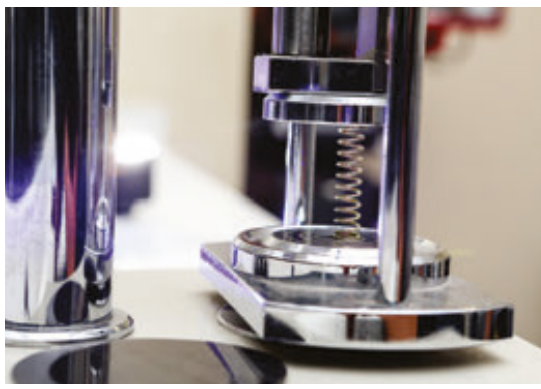
AGRALE | MA 6.0 | MOTOR MWM 4.07TCE 4C | VOLARE A5 | VOLARE A6 | GM | BLAZER | S10 | TROLLER | JIPE TROLLER T4 | VW



**Vendas / Sales:** vendas@cipec.com.br  
**Geral / General:** cipec@cipec.com.br  
**Televendas / Phone:** +55 19 3834-9822  
**Fax / Fax:** 0800.707.9822  
**www.cipec.com.br**







**Conheça toda nossa linha de produtos:**

- ✓ **Scania**
- ✓ **Volvo**
- ✓ **Iveco**
- ✓ **VW**
- ✓ **Mercedes**
- ✓ **Freios**
- ✓ **Daf**
- ✓ **Ford**



**[www.cipec.com.br](http://www.cipec.com.br)**

**EMPRESA CERTIFICADA  
CERTIFIED COMPANY ISO 9001:2015**

