



**CATÁLOGO PEÇAS DE REPOSIÇÃO**  
*Spare Parts Catalogue*

**COXINS**  
*Cipec Rubber Mountings*

[www.cipec.com.br](http://www.cipec.com.br)

EMPRESA CERTIFICADA  
CERTIFIED COMPANY ISO 9001:2015

# Empresa

## Company | La Empresa

A Cipec iniciou suas atividades em 1983 na cidade de São Caetano como um pequeno distribuidor e fabricante de peças de reposição para caminhões e ônibus. Trabalhando com empenho e seriedade, a Cipec rapidamente ampliou seu leque de produtos de distribuição, alcançando logo em seguida o status de referência nacional no mercado de reposição da linha Scania.

Em 1999, devido ao ritmo crescente dos negócios, a estrutura da Cipec já não comportava a demanda, levando a empresa a transferir suas atividades para uma área de 20.000 m<sup>2</sup> em Indaiatuba, localizada estrategicamente no interior paulista. Nesse novo local, a empresa investiu fortemente na parte fabril e agregou as linhas Volvo, VW, MWM, Cummins e Iveco.

Com amplo espaço fabril e novos nichos de mercado se abrindo, em 2003 a Cipec inovou mais uma vez, implantando uma completa linha de servos de embreagem, válvulas e reparos de freios para linha pesada. Surgiu então a NTI, uma marca Cipec que em pouco tempo ficaria conhecida no mercado, oferecendo um produto competitivo e altamente confiável.

Atualmente, a Cipec conta com mais de 170 colaboradores e comercializa mais de 22.000 itens a partir de sua unidade fabril localizada em Indaiatuba, ampliando ainda mais sua capacidade de produção e expedindo mais de 30 toneladas de produtos por dia para mais de 50 países em todo o mundo.

Cipec began its activities in 1983 in the city of São Caetano as a small distributor and manufacturer of spare parts for trucks and buses. Working with dedication and seriousness, Cipec quickly expanded its range of distribution products and soon achieved national reference status in the replacement market for the Scania line.

By 1999, its structure could no longer accommodate the growing pace of business, prompting Cipec to transfer its operations to a 20,000 m<sup>2</sup> area in Indaiatuba, strategically located in the interior of São Paulo. Strong investments were made in the manufacturing sector, and the Volvo, VW, MWM, Cummins, and Iveco lines were added.

With ample manufacturing space and new market niches emerging, Cipec innovated once again in 2003, introducing a complete line of clutch servos, valves, and brake repair kits for heavy-duty applications. Thus, NTI was born, a Cipec brand that quickly became known in the market, offering competitive and highly reliable products.

Today, Cipec employs over 170 employees and sells over 22,000 items from its manufacturing facility located in Indaiatuba, further increasing its production capacity and shipping over 30 tons of products per day to more than 50 countries worldwide.

La Cipec inició sus actividades en 1983 en la ciudad de São Caetano como un pequeño distribuidor y fabricante de repuestos para camiones y autobuses. Trabajando con dedicación y seriedad, Cipec amplió rápidamente su gama de productos de distribución y pronto alcanzó el estatus de referencia nacional en el mercado de repuestos para la línea Scania.

Para 1999, su estructura ya no podía soportar el creciente ritmo de negocios, lo que llevó a Cipec a trasladar sus operaciones a una área de 20,000 m<sup>2</sup> en Indaiatuba, estratégicamente ubicada en el interior de São Paulo. Se realizaron fuertes inversiones en el sector manufacturero y se añadieron las líneas Volvo, VW, MWM, Cummins y Iveco.

Con un amplio espacio de fabricación y nuevos nichos de mercado emergentes, Cipec innovó una vez más en 2003, introduciendo una línea completa de servos de embrague, válvulas y reparaciones de frenos para aplicaciones de servicio pesado. Así nació NTI, una marca de Cipec que rápidamente se hizo conocida en el mercado, ofreciendo productos competitivos y altamente confiables.

Hoy en día, Cipec emplea a más de 170 trabajadores y vende más de 22,000 artículos desde su planta de fabricación ubicada en Indaiatuba, aumentando aún más su capacidad de producción y enviando más de 30 toneladas de productos al día a más de 50 países en todo el mundo.



SCANIA	3
COXIM	3
VOLVO	6
COXIM	6
VW	7
COXIM	7
FORD	8
COXIM	8
IVECO	9
COXIM	9
MERCEDES	10
COXIM	10
AGRALE	11
COXIM	11
DAF	12
COXIM	12
MAN	13
COXIM	13
CONTATOS	14
ÍNDICE POR CÓDIGO	15

SCANIA	3
RUBBER MOUNTING	3
VOLVO	6
RUBBER MOUNTING	6
VW	7
RUBBER MOUNTING	7
FORD	8
RUBBER MOUNTING	8
IVECO	9
RUBBER MOUNTING	9
MERCEDES	10
RUBBER MOUNTING	10
AGRALE	11
RUBBER MOUNTING	11
DAF	12
RUBBER MOUNTING	12
MAN	13
RUBBER MOUNTING	13
CONTACTS	14
INDEX BY CODE	15

## 1.01

## COXIM

### RUBBER MOUNTING

#### 1116362 STEM AIR SUSPENSION

COXIM SUPORTE SUSP. AR CABINE 113

006169  
1116362



T113 / P93 /

#### 128328 BEARING SIDE BUFFER

COXIM LAT. MANC. 120016 FX DIANT.

000173  
128328



/ L75 / L76

#### 1322341 LEAF SPRING STOPPER LH

BATENTE FEIXE MOLA L.E. S.4

010180  
1322341



114 / 124 / 164 / P.G.R. / 94 /

#### 1336882 ENGINE REAR MOUNT 94/

COXIM TRASEIRO MOTOR 94/114/124

003473  
1336882  
1371725



114 / 124 / 164 / K124 / 94 / K94 /

#### 1336885 FRONT ENGINE BUFFER 94/

COXIM DIANT. MOTOR 2 FUROS C/PINO GUIA

005290  
2377037  
1778532  
1778530  
1496749  
1496288  
1469277



114 / 124 / 164 / K124 / 94 /

#### 1343100 SHOCK ABSORBER

COXIM SUSP. CABINE 94/114/124/164

007796  
1343100  
1439197



110 / 114 / 124 / 164 / P.G.R. / 94 /

#### 1349805 CAB SUSP. BRACKET

COXIM SUPORTE SUSP. CABINE 94/114/124

004348  
1349805  
2470166  
2154867  
1923654



114 / 124 / 164 / P.G.R. / 94 /

#### 1349805 PU CAB SUSP. BRACKET

COXIM SUPORTE SUSP. CABINE 94/114/124 =

025575  
1349805 PU  
2470166 PU  
2154867 PU  
1923654 PU



#### 1349810 CAB SUSP. BRACKET

COXIM SUPORTE SUSP. CABINE 94/114/124

004349  
1349810  
1899632



114 / 124 / 164 / P.G.R. / 94 /

#### 1349810 PU CABIN SUSP. BRACKET

COXIM SUPORTE SUSP. CABINE 94/114/124 =

025576  
1349810 PU  
1899632 PU



110 / 114 / 124 / 164 / P.G.R. / 94 /

#### 1353959 FRONT SUSPENSION

COXIM SUSPENSÃO CAPO DIANT. 114/124

006177  
1353959



114 / 124 / 164 /

#### 135583 CAB UPPER BUFFER

COXIM SUPERIOR CABINE

000224  
135583



/ L75 / L76 / 110

#### 1357380 CAB CYLINDER BUFFER 94/

COXIM CILINDRO BASC. CABINE 94/114/124

006220  
1357380



114 / 124 / 164 / P.G.R. / 94 /

#### 1357381 CAB CYLINDER BUFFER 94/

COXIM CILINDRO BASC. CABINE 94/114/124

006196  
1357381



114 / 124 / P.G.R. / 94 /

#### 1363634 RADIATOR SUSPENSION

COXIM SUSPENSÃO RADIADOR 94/114/124

006096  
1363634



114 / 124 / 164 / K124 / 94 / F94 / K94 /

#### 1370141 REAR AXLE RUBBER

COXIM MOLA EIXO TANDEM S.4 - TODOS

011440  
1370141



114 / 124 / 164 / P.G.R. / 94 / L.P.G.R.S. (NTG) /

#### 1372432 FRONT SUSPENSION CAB 2

COXIM SUP. SUSP. CAB. 2 PONTAS DIANT.

006179  
1372432



114 / 124 / 164 / P.G.R. / 94 /

#### 1388070 GEAR BOX ABSORBER

COXIM TUBO REFRIG. CX. CAMBIO 94/114/124/

007871  
1388070



114 / 124 / 164 / P.G.R. / 94 /

#### 138849 RUBBER MOUNTING REAR

COXIM TRASEIRO MOTOR 111

000239  
138849



L75 / L76 / 110 / 111 /

#### 1397568 FRONT GRILL PANEL

COXIM PAINEL GRADE FRONTAL 94/114/124/64

009798  
1397568



114 / 124 / 164 / P.G.R. / 94 /

#### 140320 RADIATOR SHELL MOUTING

COXIM MASCARA RAD. 110/111

000272  
140320



L75 / L76 / 110 / 111 /

#### 1424068 SUSPENSION BONNET

COXIM SUSPENSÃO CAPO SERIE 4

006224  
1424068  
1422942



114 / 124 / 164 /

#### 1427926 BUFFER 114/124

COXIM TRAMBULADOR 114/124

006187  
1427926  
1514089



114 / 124 / 164 / P.G.R. / 94 /

#### 146526 ENGINE FRONT MOUNTING

COXIM DIANT. MOTOR 110/111 ROSCA 12MM

000342  
146526  
138850  
58510



L75 / L76 / 110 / 111 / T113 / R113 / R143 / 124 /

**1.01 COXIM**
**RUBBER MOUNTING**
**1469287** GEAR BOX MOUNTING P.G.

COXIM TRASEIRO MOTOR PGR S.5

 014082  
 1469287  
 1921972  
 1782203  
 1779609  
 1906590  
 1801745


114 / 124 / 164 / P.G.R. / K124 / 94 / K94 /

**1496288 R** ENGINE FRONT MOUNTING =

COXIM DIANT. MOTOR =3FUROS= S.4 =

 024596  
 1496288 R  
 1778532 R  
 1778530 R  
 1496749 R  
 1469277 R  
 1423011 R

**1518460** RADIATOR MOUNT S4

COXIM DEFLETOR RADIADOR S.4

 016897  
 1518460  
 1772442


114 / 124 / P.G.R. / 94 /

**165332** SUP. CAB BUFFER 112

COXIM INFERIOR CABINE 112

 000431  
 165332  
 347245


L75 / L76 / 110 / 111 / T112 / T113 / T142 /

**165337** LOWER CABIN MOUNTING

COXIM SUPERIOR CABINE

 000433  
 165337  
 347241


L75 / L76 / 110 / 111 / T112 / T113 / T142 /

**211694** GEAR BOX BUFFER 110/111

COXIM CAMBIO 110/111

 000756  
 211694  
 177834


LK141 / LK140 // 110 / 111

**2592761** GEAR BOX MOUNTING NTG

COXIM CAMBIO NTG L.P.G.R.S

 025728  
 2592761  
 2222211


P.G.R.S. / NTG /

**2592762** GEAR BOX MOUNTING NTG

COXIM TRAS. CAMBIO NTG L.P.G.R.S DC 16

 026920  
 2592762  
 2222212

**2611113** FRONT ENGINE MONTING

COXIM DIANT. MOTOR NTG DC 16 V8

 026922  
 2611113  
 2611117

**2611115** FRONT ENGINE MONTING

COXIM DIANT. MOTOR NTG DC 07/DC 09

 026921  
 2611115  
 2611102  
 2545306

**2611116** FRONT ENGINE MONTING

COXIM DIANT. MOTOR NTG (DUREZA 60

 025871  
 2611116  
 2495102  
 2611114

**273793** RADIATOR RUBBER

COXIM LATERAL RADIADOR 112

 001127  
 273793

 T112 / T113 / F113 / R113 / R112 / R142 / T142 /  
 F112 / R143 / P93 /

**283296** CABINE SUSP. BUFFER 112

COXIM SUSPENSÃO CABINE 112

 001187  
 283296


T112 / T113 / T142 /

**285248** AIR DUCT BUFFER 112

COXIM DUTO AR 112

 001209  
 285248

 T112 / T113 / R113 / R112 / R142 / T142 / R143 /  
 P93 /

**308604** RADIATOR BUFFER T112

COXIM SUPORTE SUP. RAD. T112

 001422  
 308604

 T112 / T113 / F113 / R113 / R112 / R142 / T142 /  
 F112 / R143 / P93 /

**319989** ENGINE HOOD BUFFER 112/

COXIM BATENTE CAPO 112/3

 001505  
 319989  
 341403


T112 / T142 /

**329583** BONNET LOCK BUFFER 112

COXIM FECHO CAPO 112

 001543  
 329583  
 305345


T112 / T113 / T142 /

**332738** ENGINE FRONT MOUNTING

COXIM DIANT. MOTOR 112/3 =REFORÇADO=

 000230  
 332738  
 137207  
 121527

 T112 / T113 / F113 / R113 / K112 / R112 / R142 /  
 T142 / F112 / K113 / R143 / L113 /

**348059** BONNET SEAL BUFFER 112

COXIM ISOLADOR CAPO 112

 001578  
 348059  
 293547


T112 / T142 /

**361721** BONNET SEAL BUFFER 113

COXIM ISOLADOR CAPO 113

 001613  
 361721  
 1358828  
 1332090


T113 /

**385266** CAB AIR SUSP. BUFFER 113

COXIM SUSPENSÃO AR CABINE 113

 003038  
 385266


T113 / R113 / R143 /

**390358** LOWER CABIN MOUNTING

COXIM INFERIOR CABINE 113

 001642  
 390358


L75 / L76 / 110 / 111 / T112 / T113 / T142 /

**390359** CAB UPPER BUFFER 113

COXIM SUPERIOR CABINE 113

 001643  
 390359


L75 / L76 / 110 / 111 / T112 / T113 / T142 /

**397308** AIR RADIATOR BUFFER 113

COXIM RADIADOR AR 113

 004439  
 397308  
 1795583


T113 / R113 / R143 / 114 / 124 / 164 / P.G.R. / 94 /

## 1.01

## COXIM

### RUBBER MOUNTING

#### 40607

#### RUBBER MOUNTING

COXIM SILENCIOSO 111/2

000048  
40607  
2355  
40608



L75 / L76 / LK141 / LK140 / 110 / 111 / T112 /  
T113 / F113 / R113 / K112 / R112 / R142 / T142 /

#### 523434

#### ENGINE REAR MOUNTING

COXIM TRASEIRO MOTOR 112/3

001725  
523434  
366592  
278599



T112 / T113 / F113 / R113 / K112 / R112 / R142 /  
T142 / F112 / K113 / R143 /

**2.01 COXIM**
**RUBBER MOUNTING**

**1096625 V** CAB SUSP. BRACKET  
 COXIM SUSP. CABINA FH 12  
 010125  
 1096625 V



FH16 / FH12 / FH16J /

**1130993 V** ENGINE BRAKE MOUNTING  
 COXIM SUPORTE RETARDER B10/58  
 009481  
 1130993 V



B58 / B10M / B7 / FS7 / B7F /

**1573891 V** ENGINE REAR BUFFER  
 COXIM TRAS. MOTOR N/L/F10/12 B-12B  
 007779  
 1573891 V



N10 USA / NL12 / F12 /

**1576103 V** GEARBOX BUFFER  
 COXIM CAMBIO  
 002750  
 1576103 V



NL12 / NL10 / N10 / N12 / B12 /

**1611420 V** FRONT ENGINE MOUNTING  
 COXIM DIANTEIRO MOTOR  
 002748  
 1611420 V



NL12 / N10 USA /

**1611789 V** ENGINE HOOD BUFFER  
 COXIM CAPO  
 004346  
 1611789 V



FH16 / NL12 / N10 USA / NL10 / N10 / N12 / N12 USA / FH12 / NL10 AUS. / NL12 AUS. / NL12 S /

**1622825 V** ENGINE MOUNT FH/NH  
 COXIM DIANTEIRO MOTOR FH/NH  
 010025  
 1622825 V  
 20503551 V



/ FH12 / NH12 / FH12J / FH16 / FH16J / FM10 / FM12

**1629614 V** ENGINE REAR MOUNT  
 COXIM TRAS. MOTOR FH/NH  
 009670  
 1629614 V



**1664970 V** AIR DUCT BRACKET  
 COXIM SUPORTE DUTO AR FH12/NL12  
 010457  
 20593022 V  
 1664970 V



FH16 / FM10 / FM7 / F10 / F12 / F16 / FL10 / FL7 / FH12 / FM / FM12 / FM9 / FH16J / NH12 / FL12 /

**1665322 V** RADIATOR MOUNTING FH/  
 COXIM INFERIOR RADIADOR FH/NH/FM  
 009892  
 1665322 V



**20364891 V** RADIATOR MOUNT FH/FM/NH  
 COXIM LAT. RADIADOR FH/FM/NH  
 019522  
 20364891 V



FH16 / FH12 / FH / FM / FM12 / FM9 / NH12 / FE /

**20410142 V** WIRE CABLE BOX  
 COXIM CAIXA CABOS/CHICOTE FH12 ATE  
 012851  
 20410142 V



FH12 /

**20499469 V** ENGINE REAR MOUNT D12D  
 COXIM TRASEIRO MOTOR D12D  
 015032  
 20499472 V  
 20499469 V  
 21228154 V  
 21228153 V  
 20723225 V  
 20723224 V



FH16 / FH12 / FH / FM / FM12 / NH12 /

**20747058 V** FRONT ENGINE MOUNTING  
 COXIM BARRA DIANT. APOIO MOTOR FH12  
 014394  
 20747058 V



FH / FM /

**20828767 V** RADIATOR MOUNTING KIT 4  
 COXIM RADIADOR (KIT C/ 4) VM  
 026105  
 20828767 V



**21416525 V** GEARBOX REAR MOUNTING  
 COXIM TRAS. SUSP. CAMBIO FH/FM = FH <  
 024342  
 21416525 V



**21997378 V** FRONT ENGINE MOUNTING  
 COXIM DIANT. SUSP. MOTOR FH/FM = FH <  
 024343  
 21997378 V  
 21810944 V



**3154251 V** RADIATOR MOUNTING FH/  
 COXIM RADIADOR FH/FM/NH  
 019523  
 3154251 V



FH16 / FH12 / FH / FM / FM12 / FM9 / NH12 / FE /

**6793185 V** CABIN MOUNTING N10/12/NL  
 COXIM CABINE N10/12/NL  
 004181  
 6793185 V



NL12 / N10 USA / FE7 USA / NL10 / N10 / N12 / N12 USA / FS7 / FL6 / FL616 / FL619 / FL608 /

**8123691 V** ENGINE HOOD HINGE  
 COXIM DOBRADICA CAPO NL10/12  
 009786  
 8123691 V



NL10 / NL12 /

## 3.01 COXIM

### RUBBER MOUNTING

#### 2P0711026 GEAR LEVER MOUNTING

COXIM ALAVANCA CAMBIO

018261  
2P0711026



5.140 MWM DELIVERY / 8.150MWM DELIVERY /

#### 2R2899541 RETAINER LOWER

COXIM INF. BARRA SUSP. CABINA

013623  
2R2899541



/ 24.250ECONSTELLATION / 17.250E  
CONSTELLATION / 19.320E CONSTELLATION /

#### 2V5511150 ENGINE MOUNTING SUSP.

COXIM SUSP. EIXO TRAS. L.D. MAN/VW TGX

027407  
2V5511150



#### T06199201 FRONT ENGINE BUFFER

COXIM DIANTEIRO MOTOR

004482  
T06199201  
BD4T6038A



6.90 / 7.90S / 7.110S /

## 4.01 COXIM

### RUBBER MOUNTING

#### T06199201 FRONT ENGINE BUFFER

COXIM DIANTEIRO MOTOR  
004482



F1000 / F4000

## 5.01

## COXIM

### RUBBER MOUNTING

#### 41214451 RADIATOR MOUNT N.

COXIM RADIADOR N.STRALIS/TRAKKER

015786  
41214451



NOVO STRALIS / NOVO TRAKKER / TRAKKER / STRALIS /

#### 503102921 FRONT BUMPER SUPPORT

COXIM SUP. PARACHOQUE DIANT. STRALIS

026110  
503102921  
503349029



#### 5801762136 REAR ENGINE MOUNTING

COXIM TRASEIRO SUSP. MOTOR STRALIS/

024425  
5801762136  
5801666554  
41272826  
41219895



#### 5801762138 FRONT ENGINE MOUNTING

COXIM DIANTEIRO SUSP. MOTOR N.STRALIS

024426  
5801762138



#### 93809291 RADIATOR MOUNT DAILY

COXIM LATERAL RADIADOR DAILY

015779  
93809291  
5801299599  
504294809  
503642569



N.DAILY / DAILY / DAILY/SCUDATO / N.DAILY SCUDATO /

#### 93826649 MUFFLER MOUNTING DAILY

COXIM SILENCIOSO DAILY

016708  
93826649



DAILY / DAILY/SCUDATO /

6.01 COXIM

RUBBER MOUNTING

6342410513 REAR ENGINE MOUNTING

COXIM TRAS. SUSP. MOTOR MBB AXOR

026976  
6342410513  
9412417713  
9412415713  
9412414713  
9412411713  
6342410913



9412418713 FRONT ENGINE MOUNTING

COXIM DIANT. MOTOR MBB ACTROS/AXOR

027654  
9412418713  
A9412418713



7.01

COXIM

RUBBER MOUNTING

6001001008004 FRONT ENGINE

COXIM DIANT. MOTOR ROSCA 12MM

024581

6001001008004



## 8.01 COXIM

### RUBBER MOUNTING

#### 1806720 REAR UPPER MOUNTING

COXIM TRAS. SUP. MOTOR DAF CF85/95/105

026941  
1806720  
1806721  
1378589  
1378588



#### 2013651 FRONT ENGINE MOUNTING

COXIM DIANT. MOTOR DAF CF85/95/105

026942  
2013651  
2009135  
1806735  
1657422  
1638646



#### 221342 RADIATOR MOUNTING DAF

COXIM RADIADOR DAF XF105

028854  
221342



XF105 /

9.01

COXIM

RUBBER MOUNTING

2V5511149

ENGINE MOUNTING SUSP.

COXIM SUSP. EIXO TRAS. L.E. MAN/VW TGX

027408

2V5511149



**Vendas / Sales:** vendas@cipec.com.br  
**Geral / General:** cipec@cipec.com.br  
**Televendas / Phone:** +55 19 3834-9822  
**Fax / Fax:** 0800.707.9822  
**www.cipec.com.br**

40607	5
128328	3
135583	3
138849	3
140320	3
146526	3
165332	4
165337	4
211694	4
273793	4
283296	4
285248	4
308604	4
319989	4
329583	4
332738	4
348059	4
361721	4
385266	4
390358	4
390359	4
397308	4
523434	5
1116362	3
1322341	3
1336882	3
1336885	3
1343100	3
1349805	3
1349805 PU	3
1349810	3
1349810 PU	3
1353959	3
1357380	3
1357381	3
1363634	3
1370141	3
1372432	3
1388070	3
1397568	3
1424068	3
1427926	3
1469287	4
1496288 R	4
1518460	4
2592761	4
2592762	4
2611113	4
2611115	4
2611116	4

1096625 V	6
1130993 V	6
1573891 V	6
1576103 V	6
1611420 V	6
1611789 V	6
1622825 V	6
1629614 V	6
1664970 V	6
1665322 V	6
3154251 V	6
6793185 V	6
8123691 V	6
20364891 V	6
20410142 V	6
20499469 V	6
20747058 V	6
20828767 V	6
21416525 V	6
21997378 V	6

2P0711026	7
2R2899541	7
2V5511150	7
T06199201	7



T06199201

8

41214451	9
93809291	9
93826649	9
503102921	9
5801762136	9
5801762138	9





# ORIGINAL CODE Mercedes-Benz

6342410513	10
9412418713	10



6001001008004

11



Televentas: + 55 19 3834.9822

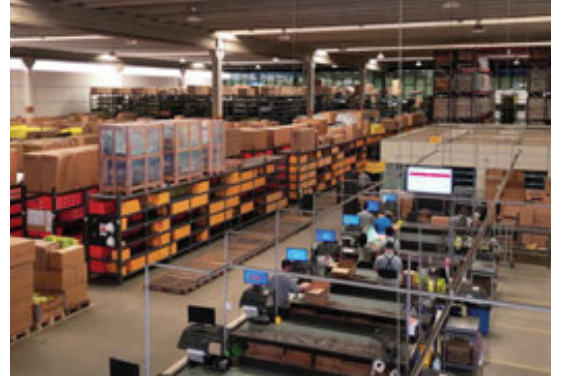
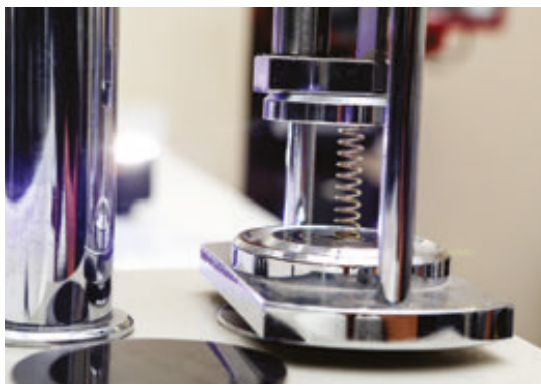


+ 55 54 3211.1800



+ 55 11 2626.8839





**Conheça toda nossa linha de produtos:**

- ✓ **Scania**
- ✓ **Volvo**
- ✓ **Iveco**
- ✓ **VW**
- ✓ **Mercedes**
- ✓ **Freios**
- ✓ **Daf**
- ✓ **Ford**



**[www.cipec.com.br](http://www.cipec.com.br)**

**EMPRESA CERTIFICADA  
CERTIFIED COMPANY ISO 9001:2015**

