



CATÁLOGO DE FREIOS

Catalogue of Brakes



CUÍCAS

Spring Brakes



www.ntifreios.com.br

EMPRESA CERTIFICADA
CERTIFIED COMPANY ISO 9001:2015

A Cipec iniciou suas atividades em 1983 na cidade de São Caetano como um pequeno distribuidor e fabricante de peças de reposição para caminhões e ônibus. Trabalhando com empenho e seriedade, a Cipec rapidamente ampliou seu leque de produtos de distribuição, alcançando logo em seguida o status de referência nacional no mercado de reposição da linha Scania.

Em 1999, devido ao ritmo crescente dos negócios, a estrutura da Cipec já não comportava a demanda, levando a empresa a transferir suas atividades para uma área de 20.000 m² em Indaiatuba, localizada estrategicamente no interior paulista. Nesse novo local, a empresa investiu fortemente na parte fabril e agregou as linhas Volvo, VW, MWM, Cummins e Iveco.

Com amplo espaço fabril e novos nichos de mercado se abrindo, em 2003 a Cipec inovou mais uma vez, implantando uma completa linha de servos de embreagem, válvulas e reparos de freios para linha pesada. Surgiu então a NTI, uma marca Cipec que em pouco tempo ficaria conhecida no mercado, oferecendo um produto competitivo e altamente confiável.

Atualmente, a Cipec conta com mais de 170 colaboradores e comercializa mais de 22.000 itens a partir de sua unidade fabril localizada em Indaiatuba, ampliando ainda mais sua capacidade de produção e expedindo mais de 30 toneladas de produtos por dia para mais de 50 países em todo o mundo.

Cipec began its activities in 1983 in the city of São Caetano as a small distributor and manufacturer of spare parts for trucks and buses. Working with dedication and seriousness, Cipec quickly expanded its range of distribution products and soon achieved national reference status in the replacement market for the Scania line.

By 1999, its structure could no longer accommodate the growing pace of business, prompting Cipec to transfer its operations to a 20,000 m² area in Indaiatuba, strategically located in the interior of São Paulo. Strong investments were made in the manufacturing sector, and the Volvo, VW, MWM, Cummins, and Iveco lines were added.

With ample manufacturing space and new market niches emerging, Cipec innovated once again in 2003, introducing a complete line of clutch servos, valves, and brake repair kits for heavy-duty applications. Thus, NTI was born, a Cipec brand that quickly became known in the market, offering competitive and highly reliable products.

Today, Cipec employs over 170 employees and sells over 22,000 items from its manufacturing facility located in Indaiatuba, further increasing its production capacity and shipping over 30 tons of products per day to more than 50 countries worldwide.

La Cipec inició sus actividades en 1983 en la ciudad de São Caetano como un pequeño distribuidor y fabricante de repuestos para camiones y autobuses. Trabajando con dedicación y seriedad, Cipec amplió rápidamente su gama de productos de distribución y pronto alcanzó el estatus de referencia nacional en el mercado de repuestos para la línea Scania.

Para 1999, su estructura ya no podía soportar el creciente ritmo de negocios, lo que llevó a Cipec a trasladar sus operaciones a una área de 20,000 m² en Indaiatuba, estratégicamente ubicada en el interior de São Paulo. Se realizaron fuertes inversiones en el sector manufacturero y se añadieron las líneas Volvo, VW, MWM, Cummins e Iveco.

Con un amplio espacio de fabricación y nuevos nichos de mercado emergentes, Cipec innovó una vez más en 2003, introduciendo una línea completa de servos de embrague, válvulas y reparaciones de frenos para aplicaciones de servicio pesado. Así nació NTI, una marca de Cipec que rápidamente se hizo conocida en el mercado, ofreciendo productos competitivos y altamente confiables.

Hoy en día, Cipec emplea a más de 170 trabajadores y vende más de 22,000 artículos desde su planta de fabricación ubicada en Indaiatuba, aumentando aún más su capacidad de producción y enviando más de 30 toneladas de productos al día a más de 50 países en todo el mundo.



PART TYPES INDEX



WABCO	03
CUICAS	03
KNORR	11
CUICAS	11
VARGA	15
CUICAS	15
BENDIX	16
CUICAS	16
DIVERSOS	18
CUICAS	18
CONTATOS	22
ÍNDICE REMISSIVO	23



WABCO	03
SPRING BRAKE	03
KNORR	11
SPRING BRAKE	11
VARGA	15
SPRING BRAKE	15
BENDIX	16
SPRING BRAKE	16
DIVERSOS	18
SPRING BRAKE	18
CONTACTS	22
PART NUMBER INDEX	23

WABCO: 4213051210

NTI: 016612 | NTI: 022568 | WABCO: 4213051210



CIL. AMPLIFICADOR FREIO =MBB ANTIGO
1113/1513=
CIL. AMPLIFICADOR DE FRENO =MBB= 1113/
1513
BRAKE BOOSTER CYLINDER 1113/1513

MERCEDES: L1113, L1313, L1316, L1318, L1513, L1514, L1516, L1517, L1519, L2013, L2216, L2219, LK1313, LK1316, LK1513, LK1519, LK2013, LK2216, LK2219, LS1313, LS1316, LS1513, LS1519, LS2013, LS2216, LS2219, O355, O362, O364, O365, OF1313, OF1316, OF1517, OH1313, OH1316, OH1419, OH1517

WABCO: 9253212880

NTI: 027540 | WABCO: 9253212880



CUICA 24 X 24
CUICA 24 X 24
BRAKE CHAMBER 24X24 WABCO TYPE

VOLVO: N10, N12

WABCO: 9254810130

NTI: 027536 | NTI: 028789 | WABCO: 9254810130



CUICA 24 X 24
CUICA 24 X 24
BRAKE CHAMBER 24X24 "G" WABCO TYPE

MERCEDES: ACTROS

WABCO: 9254911410

NTI: 027542 | WABCO: 9254911410



CUICA 24 X 24
CUICA 24 X 24
BRAKE CHAMBER 24X24 WABCO TYPE

MERCEDES: 2640S, 2644 | SCANIA: 114, 124 | VOLVO: EDC, FM12

WABCO: 9254314500

NTI: 027538 | NTI: 028675 | WABCO: 9254314500



CUICA 24 X 30 TG
CUICA 24 X 30 TG
BRAKE CHAMBER 24X30 TYPE "G"

SCANIA: F113, K113, P93, R113, R143, T113

WABCO: 9253214170

NTI: 027541 | NTI: 028790 | WABCO: 9253214170



CUICA COMBINADO 24 X 30
CUICA COMBINADO 24 X 30
BRAKE CHAMBER SHORT SHAFT 24X30

MERCEDES: O370 R, O370 RS, O371 R, O371 RS, O371 RSD, O371 RSE, O371 RSL, O371 U, O371 UL, O400, O400 RS, O400 RSD, O400 RSE, O400 RSL



WABCO: 4235050000

NTI: 027544 | NTI: 028851, 028852 | WABCO: 4235050000



CUICA FREIO DIANTEIRO T20 (DISCO)
CUICA FREIO DIANTEIRO T20 (DISCO)
BRAKE CHAMBER FRONT BARKE DISC T20

MERCEDES: AXOR2035, AXOR2040, AXOR2044, AXOR2535, AXOR2540, AXOR2644, AXOR3340, AXOR3341, AXOR4144 | SCANIA: 114, 124, 164, 94, K114, K124, K94, P.G.R., R113, R143, T113

WABCO: 9254300310

NTI: 027543 | WABCO: 9254300310



CUICA FREIO DISCO 20 X 24
CUICA FREIO DISCO 20 X 24
BRAKE CHAMBER 20X24 BRAKE DISC
WABCO TYPE

MERCEDES: AXOR2035, AXOR2040, AXOR2044, AXOR2535, AXOR2540, AXOR2644, AXOR3340, AXOR3341, AXOR4144 | SCANIA: 114, 124, 164, 94, P93, R113, R143, T113, T143

WABCO: 4254462504

NTI: 013320 | NTI: 023495, 023496 | WABCO: 4254462504



ASSENTO MOLA CUICA FREIO TRAS. =TIPO
"G"=
ARANDELA MUELLE FRENO TRASERA
BRAKE CHAMBER SPRING SEAT REAR



CILINDRO TRISTOP TIPO "G"
CILINDRO TRISTOP TIPO "G"
BRAKE CHAMBER STRISTOP (G)

SCANIA: 114, 124, 164, 94, F113, F94, K113, K114, K124, K94, P93, R113, R143, T113 | VOLVO: B10M, B10R, B12, FH12, FM10, FM12, NH12, NL10, NL12

WABCO: 4213056502

NTI: 016560 | WABCO: 4213056502



BLANK TAMPA COMPLETA CILINDRO
BLANK TAMPA COMPLETA CILINDRO
CYLINDER COVER



CIL. AMPLIFICADOR FREIO =MBB ANTIGO
1113/1513=
CIL. AMPLIFICADOR DE FRENO =MBB= 1113/
1513
BRAKE BOOSTER CYLINDER 1113/1513

MERCEDES: 1113, 1313, 1316, 1318, 1513, 1514, 1516, 1517, L1113, L1313, L1316, L1318, L1513, L1514, L1516, L1517, L1519, L2013, L2216, L2219, LK1313, LK1316, LK1513, LK1519, LK2013, LK2216, LK2219, LS1313, LS1316, LS1513, LS1519, LS2013, LS2216, LS2219, O355, O362, O364, O365, OF1313, OF1316, OF1517, OH1313, OH1316, OH1419, OH1517

WABCO: 4213050162

NTI: 011572 | WABCO: 4213050162



CARCACA CAMARA AUXILIAR WABCO
CARCASA CAMARA AUX.
AUXILIARY BRAKE CHAMBER HOUSING
WABCO TYPE



CIL. AMPLIFICADOR FREIO =MBB ANTIGO
1113/1513=
CIL. AMPLIFICADOR DE FRENO =MBB= 1113/
1513
BRAKE BOOSTER CYLINDER 1113/1513

MERCEDES: 1113, 1313, 1316, 1318, 1513, 1514, 1516, 1517, L1113, L1114, L1313, L1316, L1318, L1513, L1514, L1516, L1517, L1519, L2013, L2216, L2219, LA1113, LAK1113, LK1113, LK1114, LK1313, LK1316, LK1513, LK1519, LK2013, LK2216, LK2219, LS1113, LS1114, LS1313, LS1316, LS1513, LS1519, LS2013, LS2216, LS2219, O355, O362, O364, O365, OF1313, OF1316, OF1517, OH1313, OH1316, OH1419, OH1517



WABCO: 8993812844

NTI: 017555 | WABCO: 8993812844



FILTRO SINTERIZADO
FILTRO SINTERIZADO
FILTER



CILINDRO TRISTOP BAIONETA
CILINDRO TRISTOP BAIONETA
TRISTOP BRAKE CHAMBER

FORD: 4532E | IVECO: CAVALLINO, STRALIS | SCANIA: 114, 124, 164, 94, F94, K114, K124, K94, L94, P.G.R. | VOLVO: VM 310 | VW: 17.180, 17.220, 17.250E, 17.250E CONSTELLATION, 18.310, 19.320E

WABCO: 9254646014

NTI: 023175 | WABCO: 9254646014



FLANGE CUICA BAIONETA (16X24) ROSCA M16X1,5
FLANGE CUICA BAIONETA (16X24) ROSCA M16X1,5
BRAKE CHAMBER FLANGE (16X24)THREAD M16X1,5



CILINDRO TRISTOP BAIONETA
CILINDRO TRISTOP BAIONETA
TRISTOP BRAKE CHAMBER

MERCEDES: 1938S, 1944S, LS1938

WABCO: 9254606044

NTI: 023176 | WABCO: 9254606044



FLANGE CUICA BAIONETA (20X24) ROSCA M22X1,5
FLANGE CUICA BAIONETA (20X24) ROSCA M22X1,5
BRAKE CHAMBER FLANGE (20X24)M22X1,5



CILINDRO TRISTOP BAIONETA
CILINDRO TRISTOP BAIONETA
TRISTOP BRAKE CHAMBER

SCANIA: 114, 124, 164, 94, F113, K113, K114, K124, K94, L113, P.G.R., R113, R143, T113

WABCO: 8797532604

NTI: 006907 | NTI: 023292 | WABCO: 8797532604, 8977532614



GUARDA PO CIL. TRISTOP =2FUROS=
GUARDAPOLVO
DUST COVER 2 HOLES



CILINDRO TRISTOP TIPO "F"
CILINDRO TRISTOP TIPO "F"
TRISTOP BRAKE CHAMBER F TYPE

MERCEDES: 1214, 1214K, 1218, 1318, 1414, 1414K, 1418, 1418K, 1420, 1714, 1715, 1718, 1720, ATEGO1728, ATEGO2428, L1113, L1114, L1214, L1218, L1313, L1314, L1316, L1317, L1318, L1414, L1418, L1418 E, L1513, L1514, L1516, L1517, L1518, L1519, L1520, L1618, L1620, L1622, L2013, L2014, L2213, L2214, L2216, L2217, L2218, L2219, L2220, L2314, L2318, L2325, L2414, L2418, L2425, L2638, LA2425, LB2213, LB2214, LB2216, LB2217, LB2218, LB2219, LB2220, LB2318, LB2325, LB2418, LB2425, LG1819, LK1113, LK1114, LK1214, LK1313, LK1314, LK1316, LK1317, LK1318, LK1414, LK1418, LK1513, LK1514, LK1516, LK1517, LK1518, LK1519, LK1520, LK1614, LK1618, LK2213, LK2214, LK2216, LK2217, LK2218, LK2219, LK2220, LK2318, LK2418, LK2425, LK2638, LS1113, LS1114, LS1313, LS1314, LS1316, LS1317, LS1519, LS1520, LS1524, LS1525, LS1625, LS1630, LS1924, LS1924 A, LS1929 (FASE I), LS1929 (FASE II), LS1932, LS1933, LS1934, LS1935, LS1941, LS2638, O370 R, O370 RS, O370 RSD, O371 R, O371 RS, O371 RSD, O371 RSE, O371 RSL, O371 U, O371 UP, O400, O400 RS, O400 RSD, O400 RSE, O400 RSL, O400 UP, O400 UP A, O500 R, OF1113, OF1114, OF1313, OF1314, OF1315, OF1318, OF1618, OF1620, OF1620 PLUS, OF1721, OH1313, OH1314, OH1315, OH1316, OH1317, OH1318, OH1418, OH1419, OH1420, OH1421 L, OH1517, OH1518, OH1621 L, OH1625 L, OH1628 L, OH1635 L

WABCO: 8977510104

NTI: 006908 | NTI: 023311, 023312 | WABCO: 8977510104



GUARDA PO CIL. TRISTOP =WABCO=
GUARDAPOLVO CILINDRO EMBRAGUE
BRAKE CHAMBER TRISTOP DUST COVER



CILINDRO TRISTOP TIPO "F"
CILINDRO TRISTOP TIPO "F"
TRISTOP BRAKE CHAMBER F TYPE

MERCEDES: 1414, 1414K, 1418, 1418K, 1420, 1714, 1714K, 1715, 1718, 1718K, 1718M, 1720, 1725, ATEGO1728, ATEGO2428, L1414, L1418, L1418 E, L1513, L1514, L1516, L1517, L1518, L1618, L1620, L1621, L2013, L2014, L2213, L2214, L2216, L2217, L2218, L2219, L2220, L2314, L2318, L2325, L2414, L2418, L2635, LA1313, LA1314, LA1418, LAK1313, LAK1314, LAK1418, LB2213, LB2214, LB2216, LB2217, LB2218, LB2219, LB2220, LB2318, LB2325, LB2418, LG1819, LK1414, LK1418, LK1513, LK1514, LK1516, LK1517, LK1518, LK1618, LK1621, LK2213, LK2214, LK2216, LK2217, LK2218, LK2219, LK2220, LK2318, LK2325, LK2418, LK2635, LS1630, LS1924, LS1924 A, LS1929 (FASE I), LS1929 (FASE II), LS1932, LS1933, LS1934, LS2635, O370 R, O370 RS, O370 RSD, O371 R, O371 RS, O371 RSD, O371 RSE, O371 RSL, O371 U, O371 UL, O400, O400 RS, O400 RSD, O400 RSE, O400 RSL, O500 R, O500 RSD, OH1418, OH1521 | SCANIA: 114, 124, 164, 94, F113, F94, K113, K114, K124, K94, L113, P.G.R., P93, R113, R143, T113



Telefendas: +55 19 3834.9822



+55 54 3211.1800



+55 11 2626.8839

www.ntifreios.com.br

05



WABCO: 9259076282

NTI: 011279 | WABCO: 9259076282



HASTE MENOR SERV. CAM. TRISTOP TIPO 20
PISTON COMPLETO CAMARA TRISTOP
ROD TRISTOP CHAMBER PISTON TYPE 16



CILINDRO TRISTOP TIPO "F"
CILINDRO TRISTOP TIPO "F"
TRISTOP BRAKE CHAMBER F TYPE

MERCEDES: 1725, O370 RSD, O500 R, O500 RSD, OH1418, OH1521

WABCO: 8960269104

NTI: 018505 | NTI: 023511 | WABCO: 8960269104



MOLA RETORNO PISTAO CILINDRO =
WABCO=
MOLA RETORNO PISTAO CILINDRO =
WABCO=
SPRING



CIL. AMPLIFICADOR FREIO =MBB ANTIGO
1113/1513=
CIL. AMPLIFICADOR DE FRENO =MBB= 1113/
1513
BRAKE BOOSTER CYLINDER 1113/1513

MERCEDES: 1113, 1313, 1316, 1318, 1513, 1514, 1516, 1517, L1113, L1313, L1316, L1318, L1513, L1514, L1516, L1517, L1519, L2013, L2216, L2219, LK1313, LK1316, LK1513, LK1519, LK2013, LK2216, LK2219, LS1313, LS1316, LS1513, LS1519, LS2013, LS2216, LS2219, O355, O362, O364, O365, OF1313, OF1316, OF1517, OH1313, OH1316, OH1419, OH1517

WABCO: 8960528604

NTI: 010498 | WABCO: 8960528604



MOLA SERVICO CAMARA TRISTOP 14/24
RESORTE PRESION 14 "
BRAKE CHAMBER DRIVE SPRING 14X24



CILINDRO TRISTOP TIPO "F"
CILINDRO TRISTOP TIPO "F"
TRISTOP BRAKE CHAMBER F TYPE

MERCEDES: 1714, 1714K, 1715, 1718, 1718K, 1720, ATEGO1728, ATEGO2428, L1313, L1314, L1316, L1317, L1318, L2013, L2014, L2213, L2214, L2215, L2216, L2217, L2218, L2219, L2220, L2225, L2314, L2315, L2318, L2325, LA1313, LA1314, LA1418, LA2425, LAK1313, LAK1314, LAK1314, LAK1418, LB2213, LB2214, LB2216, LB2217, LB2218, LB2219, LB2220, LB2318, LB2325, LG1819, LK1313, LK1314, LK1316, LK1317, LK1318, LK2213, LK2214, LK2215, LK2216, LK2217, LK2218, LK2219, LK2220, LK2318, LK2325, LO814, LS1313, LS1314, LS1316, LS1317, LS1318, OF1313, OF1314, OF1315, OF1318, OF1417, OH1313, OH1314, OH1315, OH1316, OH1317, OH1318, OH1419, OH1420

WABCO: 8960528904

NTI: 010499 | NTI: 023297, 023298, 023512 | WABCO: 8960528904



MOLA SERVICO CAMARA TRISTOP 16/24
RESORTE PRESION 16 "
BRAKE CHAMBER DRIVE SPRING 16X24



CILINDRO TRISTOP TIPO "F"
CILINDRO TRISTOP TIPO "F"
TRISTOP BRAKE CHAMBER F TYPE

MERCEDES: 1414, 1414K, 1418, 1418K, 1714, 1714K, 1715, 1718K, 1718M, 1720, L1414, L1418, L1418 E, L1513, L1514, L1516, L1517, L1518, L1519, L1520, L1618, L1620, L1621, L2013, L2014, L2213, L2214, L2216, L2318, L2325, L2418, LA1418, LA2425, LAK1418, LB2213, LB2214, LB2216, LB2217, LB2218, LB2219, LB2220, LB2318, LB2325, LB2418, LB2425, LG1819, LK1414, LK1418, LK1513, LK1514, LK1516, LK1517, LK1518, LK1519, LK1520, LK1618, LK1621, LK2213, LK2214, LK2216, LK2217, LK2218, LK2219, LK2220, LK2318, LK2325, LK2418, LK2425, LS1519, LS1520, LS1524, LS1525, LS1625, LS1630, LS1924, LS1924 A, LS1929 (FASE I), LS1929 (FASE II), LS1932, LS1933, LS1934, LS1935, LS1941, O370 R, O370 RS, O370 RSD, O371 R, O371 RS, O371 RSD, O371 RSE, O371 RSL, O371 U, O371 UL, O371 UP, O400, O400 RS, O400 RSD, O400 RSE, O400 RSL, O400 UP, O400 UPA, O500 R, O500 RSD, OF1618, OF1620, OH1418, OH1421 L, OH1517, OH1518, OH1521, OH1621 L, OH1625 L, OH1635 L | SCANIA: 114, 124, 164, 94, F112, F113, F94, K113, K114, K124, K94, L113, P.G.R., P93, R112, R113, R142, R143, T112, T113, T142 | VOLVO: B10M, B10R, B12, B58E, NL10, NL12

WABCO: 8845001272

NTI: 014130 | WABCO: 8845001272



PARAF.DESATUADOR 145MM TIPO 30
TORNILLO
SCREW BRAKE CHAMBER T30



CILINDRO TRISTOP TIPO "F"
CILINDRO TRISTOP TIPO "F"
TRISTOP BRAKE CHAMBER F TYPE

FORD: 1630, 3224, 4030 | MERCEDES: L1418, L1420, L1513, L1514, L1516, L1517, L1518, L1519, L1520, L1614, L1618, L1620, L1621, L1622, L1624, L1625, L1634, L1718, L1720, L1723, L1924, L1933, L1934, L1935, L1938, L1941, L2013, L2014, L2213, L2214, L2215, L2216, L2217, L2218, L2219, L2220, L2225, L2314, L2315, L2318, L2323, L2325, L2414, L2418, L2425, L2635, LS1924, LS1929, LS1930, LS1932, LS1933, LS1934, LS1935, LS1941, O370, O371, O400, OH1418, OH1420 | VW: 16.300, 17.220, 35.300

WABCO: REP010784

NTI: 010784 | WABCO: 30025

PINO HASTE CAMARA TRISTOP =WABCO=
PINO HASTE CAMARA TRISTOP =WABCO=
PIN BRAKE CHAMBER WABCO



CILINDRO TRISTOP TIPO "F"
CILINDRO TRISTOP TIPO "F"
TRISTOP BRAKE CHAMBER F TYPE

WABCO: T06698695

NTI: 004138 | NTI: 009557 | VW: T06698695

REP. CIL. ACUMUL. MOLA =WABCO=
JOGO REP. VALVULA FRENO MANO
BRAKE CHAMBER R. KIT WABCO TYPE



CIL. ESTACIONAMENTO
CIL. ESTACIONAMENTO
STOP CYLINDER

VW: 6.90, 7.110S, 7.90S

WABCO: 4213050022

NTI: 012414 | NTI: 023112 | WABCO: 4213050022

REP. CIL. AMPLIFIC. (CAMARA AUX.)
KIT REP. CILINDRO APLICADOR
REPAIR KIT CHAMBER



CIL. AMPLIFICADOR FREIO =MBB ANTIGO
1113/1513=
CIL. AMPLIFICADOR DE FRENO =MBB= 1113/
1513
BRAKE BOOSTER CYLINDER 1113/1513

MERCEDES: L1113, L1313, L1316, L1318, L1513, L1514, L1516, L1517, L1519, L2013, L2216, L2219, LK1313, LK1316, LK1513, LK1519, LK2013, LK2216, LK2219, LS1313, LS1316, LS1513, LS1519, LS2013, LS2216, LS2219, O355, O362, O364, O365, OF1313, OF1316, OF1517, OH1313, OH1316, OH1419, OH1517

WABCO: 1953864 PG

NTI: 006959 | NTI: 006994, 009904 | SCANIA: 1953864 PG

REP. CIL. FREIO TRISTOP 24X30 =PARCIAL=
REP. PARCIAL CIL. TRISTOP 24/30 =WABCO=
BRAKE CHAMBER REPAIR KIT 24/30 WABCO



CILINDRO TRISTOP TIPO "G"
CILINDRO TRISTOP TIPO "G"
BRAKE CHAMBER STRISTOP (G)

SCANIA: F113, K113, P93, R113, R143, T113

WABCO: 0074205318

NTI: 006281 | MERCEDES: 0004305160, 0074205318, 0084201518, 6944208218 | NTI: 023044

REP. CIL. TRISTOP 12/16 =EMERGENCIA=
KIT REP. CAM. TRISTOP 12/16
BRAKE CHAMBER R. KIT 12X16 EMERGENCY



CILINDRO TRISTOP TIPO "F"
CILINDRO TRISTOP TIPO "F"
TRISTOP BRAKE CHAMBER F TYPE

MERCEDES: 1214, 1214K, 1218, L1113, L1114, LK1113, LK1114, LO610, LS1113, LS1114, LS1630, LS1935, LS1941, O370, O370 RSD, O371, O371 RSD, O400, OF1113, OF1114



WABCO: 9253200012

NTI: 004136 | NTI: 006511 | WABCO: 9253200012



REP. CIL. TRISTOP 14/24 E 16/24 = EMERGENCIA
REP. CIL. TRISTOP 14/24" (WABCO)
BRAKE CHAMBER REPAIR KIT 14X24 16X24 = WABCO=

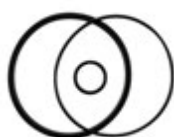


CILINDRO TRISTOP TIPO "F"
CILINDRO TRISTOP TIPO "F"
TRISTOP BRAKE CHAMBER F TYPE

MERCEDES: 1214, 1215, 1217, 1218, 1313, 1314, 1315, 1316, 1317, 1318, 1319, 1322, 1413, 1414, 1417, 1418, 1419, 1420, 1513, 1514, 1516, 1517, 1518, 1519, 1520, 1525, 1614, 1618, 1620, 1621, 1622, 1623, 1634, 1714, 1715, 1717, 1718, 1720, 1721, 1722, 1723, 1725, 1726, 1728, 1813, 1816, 1924, 1929, 1930, 1932, 1933, 1934, 1935, 1936, 1938, 1941, 1944, 2013, 2014, 2016, 2017, 2018, 2038, 2213, 2214, 2215, 2216, 2217, 2218, 2219, 2314, 2318, 2323, 2418, 2423, 2428, 2533, 2625, 2629, 2635, L1313, L1314, L1316, L1317, L1318, L1414, L1418, L1420, L1513, L1514, L1516, L1517, L1518, L1519, L1520, L1614, L1618, L1620, L1621, L1622, L1624, L1625, L1634, L1718, L1720, L1723, L1924, L1938, L2013, L2014, L2213, L2214, L2215, L2216, L2217, L2218, L2219, L2220, LAK1313, LAK1314, LAK1418, LK1313, LK1314, LK1316, LK1317, LK1318, LK1414, LK1418, LK1513, LK1514, LK1516, LK1517, LK1518, LK1519, LK1520, LK1614, LK1618, LK1620, LK1621, LK1625, LK1935, LK1941, LK2213, LK2214, LK2215, LK2216, LK2217, LK2218, LK2219, LK2220, LS1313, LS1314, LS1316, LS1317, LS1318, LS1513, LS1516, LS1519, LS1520, LS1524, LS1525, LS1621, LS1622, LS1623, LS1625, LS1629, LS1630, LS1632, LS1633, LS1634, LS1714, LS1721, LS1924, LS1929, LS1930, LS1932, LS1933, LS1934, LS1935, LS1938, LS1941, OF1315, OF1318, OF1721, OH1420, OH1520

WABCO: 9253200012 P

NTI: 011278 | NTI: 022795 | WABCO: 9253200012 P



REP. CIL. TRISTOP 14/24 E 16/24 PARCIAL = (WABCO)
KIT REP. PARCIAL CIL. TRISTOP 14/24 Y 16/24 =WABCO
BRAKE CHAMBER TRISTOP PARTIAL R. KIT 14X/24 16X24



CILINDRO TRISTOP TIPO "F"
CILINDRO TRISTOP TIPO "F"
TRISTOP BRAKE CHAMBER F TYPE

MERCEDES: 1214, 1215, 1217, 1218, 1313, 1314, 1315, 1316, 1317, 1318, 1319, 1322, 1413, 1414, 1417, 1418, 1419, 1420, 1513, 1514, 1516, 1517, 1518, 1519, 1520, 1525, 1614, 1618, 1620, 1621, 1622, 1623, 1634, 1714, 1715, 1717, 1718, 1720, 1721, 1722, 1723, 1725, 1726, 1728, 1813, 1816, 1924, 1929, 1930, 1932, 1933, 1934, 1935, 1936, 1938, 1941, 1944, 2013, 2014, 2016, 2017, 2018, 2038, 2213, 2214, 2215, 2216, 2217, 2218, 2219, 2314, 2318, 2323, 2418, 2423, 2428, 2533, 2625, 2629, 2635, L1313, L1314, L1316, L1317, L1318, L1414, L1418, L1420, L1513, L1514, L1516, L1517, L1518, L1519, L1520, L1614, L1618, L1620, L1621, L1622, L1624, L1625, L1634, L1718, L1720, L1723, L1924, L1938, L2013, L2014, L2213, L2214, L2215, L2216, L2217, L2218, L2219, L2220, LAK1313, LAK1314, LAK1418, LK1313, LK1314, LK1316, LK1317, LK1318, LK1414, LK1418, LK1513, LK1514, LK1516, LK1517, LK1518, LK1519, LK1520, LK1614, LK1618, LK1620, LK1621, LK1625, LK1935, LK1941, LK2213, LK2214, LK2215, LK2216, LK2217, LK2218, LK2219, LK2220, LS1313, LS1314, LS1316, LS1317, LS1318, LS1513, LS1516, LS1519, LS1520, LS1524, LS1525, LS1621, LS1622, LS1623, LS1625, LS1629, LS1630, LS1632, LS1633, LS1634, LS1714, LS1721, LS1924, LS1929, LS1930, LS1932, LS1933, LS1934, LS1935, LS1938, LS1941, OF1315, OF1318, OF1721, OH1420, OH1520

WABCO: 9253240012

NTI: 017462 | NTI: 023321 | WABCO: 9253240012



REP. CIL. TRISTOP 16/24 =SERVICO=
REP. CIL. TRISTOP 16/24 =SERVICO=
BRAKE CHAMBER R. KIT 16X24



CILINDRO TRISTOP TIPO "F"
CILINDRO TRISTOP TIPO "F"
TRISTOP BRAKE CHAMBER F TYPE

MERCEDES: L1513, L1514, L1516, L1517, L1518, L1519, L1520, LK1513, LK1514, LK1516, LK1517, LK1518, LK1519, LK1520, LS1519, LS1520, OF1315, OF1318, OH1520, OH1523

WABCO: 9253200072

NTI: 017461 | NTI: 023320 | WABCO: 4231050012, 9253200072



REP. CIL. TRISTOP 20/30 =SERVICO=
REP. CIL. TRISTOP 20/30 =SERVICO=
BRAKE CHAMBER REPAIR KIT 20X30



CILINDRO TRISTOP TIPO "F"
CILINDRO TRISTOP TIPO "F"
TRISTOP BRAKE CHAMBER F TYPE

MERCEDES: 1414, 1414K, 1418, 1418K, 1420, 1714, 1714K, 1715, 1718, 1718K, 1718M, 1720, 1725, L1414, L1418, L1418 E, L1618, L1620, L1621, L2314, L2318, L2414, L2418, L2635, LA1418, LAK1418, LB2318, LB2418, LK1414, LK1418, LK1618, LK1621, LK2318, LK2418, LK2635, LS1630, LS1924, LS1924 A, LS1929 (FASE I), LS1929 (FASE II), LS1932, LS1933, LS1934, LS2635, O370 RSD, O500 R, O500 RSD, OH1418, OH1521

WABCO: 9254310052

NTI: 018473 | NTI: 023323 | WABCO: 9254310052



REP. CIL. TRISTOP 24/24 =SERVICO=
REP. CIL. TRISTOP 24/24 =SERVICO=
BRAKE CHAMBER REPAIR KIT 24X24 BIG TYPE



CILINDRO TRISTOP TIPO "G"
CILINDRO TRISTOP TIPO "G"
BRAKE CHAMBER STRISTOP (G)

SCANIA: 114, 124, 164, 94, F113, K113, L113, P.G.R., R113, R143, T113



WABCO: 1953864 | NTI: 003591 | NTI: 006992, 009902 | SCANIA: 1953864



REP. CIL. TRISTOP 24/30 =EMERG=
JUEGO DE REPARO WABCO 24/24
BRAKE CYLINDER REPAIR KIT 24/30 WABCO



CILINDRO TRISTOP TIPO "G"
CILINDRO TRISTOP TIPO "G"
BRAKE CHAMBER STRISTOP (G)

SCANIA: F113, K113, P93, R113, R143, T113

WABCO: 1953864 PC | NTI: 013219 | NTI: 022874, 023719, 023720, 023721 | SCANIA: 1953864 PC



REP. CIL. TRISTOP 24/30 =EMERG= (PARCIAL)
KIT REP. CAMARA AIRE TRISTOP 24/30 =
WABCO= (PARC.)
BRAKE CHAMBER R. KIT 24/30 (PARTIAL)
WABCO TYPE



CILINDRO TRISTOP TIPO "G"
CILINDRO TRISTOP TIPO "G"
BRAKE CHAMBER STRISTOP (G)

SCANIA: F113, K113, P93, R113, R143, T113

WABCO: 9253200022 P | NTI: 018756 | NTI: 022796 | WABCO: 9253200022 P



REP. CIL. TRISTOP 30/30 =EMERG= (PARCIAL)
KIT REP. CIL. TRISTOP 20/30 Y 24/30
BRAKE CHAMBER REPAIR KIT 24/30 30/30
(EMERGENCY)



CILINDRO TRISTOP TIPO "F"
CILINDRO TRISTOP TIPO "F"
TRISTOP BRAKE CHAMBER F TYPE

VW: 16.300, 17.250E, 17.250E CONSTELLATION, 19.320E CONSTELLATION, 19.370 CONSTELLATION, 23.250E, 24.250E, 24.250ECONSTELLATION, 25.320 CONSTELLATION, 25.370E CONSTELLATION, 35.300, 35.300 LEITO, 40.300, 40.300 LEITO

WABCO: 9254320002 | NTI: 018474 | WABCO: 9254320002



REP. CIL. TRISTOP 30/30 TIPO =G= SERVICIO
REP. CIL. TRISTOP 30/30 TIPO =G= SERVICIO
BRAKE CHAMBER REPAIR KIT 30/30 BIG TYPE



CILINDRO TRISTOP TIPO "G"
CILINDRO TRISTOP TIPO "G"
BRAKE CHAMBER STRISTOP (G)

SCANIA: 114, 124, 164, 94, F113, K113, L113, R113, R143, T113

WABCO: 9254612912 | NTI: 014509 | WABCO: 9254612912



REP. CIL. TRISTOP BAIONETA T16 =EMERG=
REPARACION CIL. TRISTOP
BRAKE CHAMBER REPAIR KIT T16 W/SHAFT
(EMERGENCY)



CILINDRO TRISTOP BAIONETA
CILINDRO TRISTOP BAIONETA
TRISTOP BRAKE CHAMBER

MERCEDES: AXOR2540, AXOR2644, LS1938

WABCO: 9254200042 | NTI: 012016 | NTI: 023322 | WABCO: 9254200042



REP. CIL. TRISTOP BAIONETA T24 =EMERG=
REP. CAM. TRISTOP
BRAKE CHAMBER REPIAR KIT W/ SHAFT T 24



CILINDRO TRISTOP BAIONETA
CILINDRO TRISTOP BAIONETA
TRISTOP BRAKE CHAMBER

MERCEDES: 1938S, 1944S, AXOR1933 S, AXOR2035, AXOR2040, AXOR2044, AXOR2533, AXOR2540, AXOR2544, AXOR2640, AXOR2644, AXOR2825, AXOR2828, AXOR3340, AXOR3344, AXOR4140, LS1622, LS1938, O500, O500 M, O500 U | SCANIA: 114, 124, 164, 94, K114, K124, K94, P.G.R. | VOLVO: B9S



WABCO: 8845035492

NTI: 012015 | NTI: 023510 | WABCO: 8845035492



REP. CIL. TRISTOP BAIONETA T30 =EMERG=
REP. CAM. TRISTOP
BRAKE CHAMBER REPAIR KIT T30 W/SHAFT
EMERGENCY



CILINDRO TRISTOP BAIONETA
CILINDRO TRISTOP BAIONETA
TRISTOP BRAKE CHAMBER

FORD: 4532E | IVECO: CAVALLINO, STRALIS | MERCEDES: 1938S, 1944S, LS1938 | SCANIA: 114, 124, 164, 94, K114, K124, K94 | VOLVO: VM 310 | VW: 17.180, 17.220, 17.250E, 17.250E CONSTELLATION, 18.310, 19.320E

WABCO: 1953874

NTI: 006960 | NTI: 006991 | SCANIA: 1953874



REP. CIL. TRISTOP TIPO G 24 =EMERG=
REPARO
BRAKE CHAMBER REPAIR KIT 14/24 16/24



CILINDRO TRISTOP TIPO "G"
CILINDRO TRISTOP TIPO "G"
BRAKE CHAMBER STRISTOP (G)

SCANIA: F113, K113, P93, R113, R143, T113

WABCO: 1953874 PG

NTI: 006996 | NTI: 006998 | SCANIA: 1953874 PG



REP. CIL. TRISTOP TIPO G 24 =EMERG=
(PARCIAL)
REP. PARCIAL CIL. TRISTOP 24/24 =WABCO=
BRAKE CHAMBER REPAIR KIT 24/24
(PARTIAL) WABCO



CILINDRO TRISTOP TIPO "G"
CILINDRO TRISTOP TIPO "G"
BRAKE CHAMBER STRISTOP (G)

SCANIA: F113, K113, P93, R113, R143, T113

WABCO: 1953874 P

NTI: 006995 | NTI: 006997 | SCANIA: 1953874 P



REP. CIL. TRISTOP TIPO G 24 =EMERG=
(PARCIAL)
REP. PARCIAL CIL. TRISTOP 24/30 =WABCO=
BRAKE CHAMBER REPAIR KIT 24/24
(PARTIAL) WABCO



CILINDRO TRISTOP TIPO "G"
CILINDRO TRISTOP TIPO "G"
BRAKE CHAMBER STRISTOP (G)

SCANIA: F113, K113, P93, R113, R143, T113

WABCO: 1953864 P

NTI: 006886 | NTI: 006993, 009903 | SCANIA: 1953864 P



REP. PARCIAL CAMARA DE FREIO TRISTOP
24X30 WABCO
REP. PARCIAL CIL. TRISTOP 24/30 =WABCO=
BRAKE CHAMBER REPAIR KIT 24/30
(PARTIAL) WABCO



CILINDRO TRISTOP TIPO "G"
CILINDRO TRISTOP TIPO "G"
BRAKE CHAMBER STRISTOP (G)

SCANIA: F113, K113, P93, R113, R143, T113

WABCO: 9253200022

NTI: 006856 | NTI: 006883 | WABCO: 9253200022



REPARO CIL. TRISTOP 30/30 24/30
REP. CIL. TRISTOP 20/30 Y 24/30
BRAKE CHAMBER REPAIR KIT 24/30 30/30
(EMERGENCY)



CILINDRO TRISTOP TIPO "F"
CILINDRO TRISTOP TIPO "F"
TRISTOP BRAKE CHAMBER F TYPE

VW: 16.300, 17.250E, 17.250E CONSTELLATION, 19.320E CONSTELLATION, 19.370 CONSTELLATION, 23.250E, 24.250E, 24.250ECONSTELLATION, 25.320 CONSTELLATION, 25.370E CONSTELLATION, 35.300, 35.300 LEITO, 40.300, 40.300 LEITO



KNORR: K005211

NTI: 025203 | KNORR: K005211 | NTI: 025202


 CUICA FREIO DIANTEIRO OH3736 /1938S
 CUICA FREIO DIANTEIRO OH3736 /1938S
 BRAKE CHAMBER FRONT OH 3736/1938S

MERCEDES: 1938S, OH3736

KNORR: 4B54273 X

NTI: 018989 | KNORR: 4B54273 X


 GUARDA PO CIL. COMBINADO KNORR (PR 45)
 GUARDAPOLVO
 DUST COVER BRAKE CHAMBER KNORR

 CILINDRO TRISTOP
 CILINDRO TRISTOP
 BRAKE TRISTOP

MERCEDES: 1214, 1218, 1318, 1414, 1418, 1514, 1518, 1520, 1714, 1718, 1718K, 1720, 1723, 2423B, 2423K, 2428, ATEGO1315, ATEGO1418, L1113, L1114, L1118, L1313, L1314, L1316, L1317, L1318, L1414, L1418, L1420, L1513, L1514, L1516, L1517, L1518, L1519, L1520, L1614, L1618, L1620, L1621, L1622, L1625, L2013, L2213, L2215, L2216, L2219, LA1113, LA1313, LA1314, LA2219, LAK1113, LAK1313, LAK1314, LB2219, LK1113, LK1214, LK1313, LK1314, LK1316, LK1317, LK1318, LK1418, LK1513, LK1514, LK1516, LK1517, LK1518, LK1519, LK1520, LK1614, LK1618, LK1620, LK1625, LK2213, LK2216, LK2219, LP2318, LS1113, LS1316, LS1317, LS1318, LS1513, LS1516, LS1519, LS1520, LS1524, LS1525, O500 RDS, OF1313, OF1315, OF1318, OF1417 E, OF1620, OF1721, OF1721 M, OH1113, OH1313, OH1314, OH1315, OH1316, OH1317, OH1318, OH1418, OH1419, OH1420, OH1517

KNORR: 4B54273

NTI: 006909 | KNORR: 4B54273 | NTI: 023258


 GUARDA PO CIL. COMBINADO KNORR (PR 45)
 GUARDAPOLVO
 DUST COVER CYLINDER KNORR

 CILINDRO TRISTOP
 CILINDRO TRISTOP
 BRAKE TRISTOP

MERCEDES: 1214, 1218, 1414, 1418, 1514, 1518, 1618, 1714, 1718, 1718K, 1720, 1723, 2423B, 2423K, 2428, ATEGO1315, ATEGO1418, L1113, L1114, L1118, L1313, L1314, L1316, L1318, L1414, L1418, L1420, L1513, L1514, L1516, L1517, L1518, L1519, L1520, L1614, L1618, L1620, L1621, L1622, L1625, L2013, L2213, L2215, L2216, L2219, LA1113, LA1313, LA2219, LAK1113, LAK1313, LB2219, LK1113, LK1214, LK1313, LK1314, LK1316, LK1318, LK1418, LK1513, LK1514, LK1516, LK1517, LK1518, LK1519, LK1520, LK1614, LK1618, LK1620, LK1625, LK2213, LK2216, LK2219, LP2318, LS1113, LS1313, LS1314, LS1316, LS1318, LS1513, LS1516, LS1519, LS1520, LS1524, LS1525, LS1621, LS2636, O500 RDS, OF1313, OF1318, OF1417 E, OF1620, OF1721, OF1721 M, OH1113, OH1313, OH1315, OH1316, OH1317, OH1318, OH1418, OH1419, OH1420, OH1514

KNORR: C65723

NTI: 022382 | KNORR: C65723, Z004564


 GUARDA PO CUICA BAIONETA
 GUARDA PO CUICA BAIONETA
 BRAKE CHAMBER BOOT SHAT

 CILINDRO COMBINADO
 CILINDRO COMBINADO
 BRAKE CHAMBER KNOOR TYPE

MERCEDES: 1938S, 1944S, ACCELO915C, LS1632, LS1633, LS1938, O500 U

KNORR: 4B51433

NTI: 017355 | KNORR: 4B51433 | NTI: 023262, 023263


 MOLA DE SERVIÇO TIPO 16
 MUELLE DE SERVIÇO TIPO 16
 DRIVE SPRING TYPE 16

 CILINDRO TRISTOP
 CILINDRO TRISTOP
 BRAKE TRISTOP

MERCEDES: 1418, 1418AK, 1514, 1520, 1718AK, 1718K, 1723, 2423B, 2423K, 2428, 2629, ATEGO1315, ATEGO1418, L1418, L1420, L1513, L1516, L1519, L1520, L1614, L1618, L1620, L1621, L1622, L2013, L2014, L2213, L2214, L2216, L2217, L2218, L2219, L2220, L2314, L2315, L2318, L2418, L2425, L909, L911, L912, LA1418, LA2219, LA2425, LAK1418, LB2214, LB2216, LB2217, LB2218, LB2219, LB2220, LB2318, LB2418, LB2425, LK1418, LK1513, LK1519, LK1520, LK1618, LK1620, LK1621, LK2213, LK2214, LK2216, LK2217, LK2218, LK2219, LK2220, LK2318, LK2418, LK2425, LO809, LO811, LS1513, LS1516, LS1519, LS1520, LS1524, LS1525, LS1621, LS1625, LS1630, LS1634, LS1924, LS1924 A, LS1929, LS1932, LS1933, LS1934, LS1935, LS1941, O370 R, O370 RS, O370 RSD, O371 R, O371 RS, O371 RSD, O371 RSL, O371 SRE, O371 U, O371 UL, O371 UP, OF1218, OF1618, OF1620, OF1721, OF1721 M, OH1418, OH1421 L, OH1517, OH1518, OH1520, OH1621 L, OH1625 L, OH1635 L | SCANIA: F112, F113, K112, K113, R113, T112, T113



KNORR: Z006730

NTI: 025724 | KNORR: Z006730 | NTI: 025854



MOLA SERVICO CI.BLINDADO =20/24 =24/24 =
MOLA SERVICO CI.BLINDADO =20/24 =24/24 =
SERVICE SPRING FOR SEALED CLY. 20/24 24/
24



CUICA FREIO DIANTEIRO OH3736 /1938S
CUICA FREIO DIANTEIRO OH3736 /1938S
BRAKE CHAMBER FRONT OH 3736/1938S

MERCEDES: 1728, 1938S, ACCELO915C, AXOR1933, AXOR2035, AXOR2040, AXOR2533, AXOR2536, AXOR2540, AXOR2541, AXOR2544, AXOR2640, AXOR2644, AXOR2831, AXOR3340, AXOR3344, O500 M, O500 R, O500 RS, O500 RSD, O500 U, O500 UA, OF1721, OF1722, OH3736

KNORR: 4B57677

NTI: 017334 | KNORR: 4B57677 | NTI: 023259, 023260, 023261



MOLA SERVICO TIPO 16 =KNORR=
MUELLE SERVICIO TIPO 16 =KNORR=
SERVICE SPRING TYPE 16



CILINDRO TRISTOP
CILINDRO TRISTOP
BRAKE TRISTOP

MERCEDES: 1414, 1418, 1514, 1518, 1520, 1714, 1718, 1718K, 1720, 1723, 2423B, 2423K, 2428, ATEGO1315, ATEGO1418, L1414, L1418, L1420, L1513, L1514, L1516, L1517, L1518, L1519, L1520, L1614, L1618, L1620, L1621, L1622, L1625, LK1418, LK1513, LK1514, LK1516, LK1517, LK1518, LK1519, LK1520, LK1614, LK1618, LK1620, LK1625, LS1313, LS1314, LS1316, LS1318, LS1513, LS1516, LS1519, LS1520, LS1524, LS1525, LS1621, LS2636, O500 RDS, OF1218, OF1315, OF1318, OF1620, OF1721, OF1721 M, OH1313, OH1315, OH1316, OH1317, OH1318, OH1418 | SCANIA: F112, R112, R113, R142, T112, T113, T142 | VOLVO: B10M

KNORR: II33767C

NTI: 018831 | KNORR: II33767C



REP. CENTRAL CIL. BLINDADO
REP. CENTRAL CIL. BLINDADO
BRAKE CHAMBER REPAIR KIT



CILINDRO COMBINADO
CILINDRO COMBINADO
BRAKE CHAMBER KNOOR TYPE

MERCEDES: 1938S, 1944S, ACCELO915C

KNORR: II352771 EP

NTI: 025874 | KNORR: II352771 EP



REP. CIL. FREIO BLIND. PARCIAL (CARC.
FERRO)
KIT REP. CILINDRO FRENO BLINDADO
BRAKE CHAMBER CENTRAK REP. KIT 9W



CILINDRO COMBINADO
CILINDRO COMBINADO
BRAKE CHAMBER KNOOR TYPE

MERCEDES: 1938, 1944, ACCELO915C, LS1633, LS1938, OF1418, OF1722

KNORR: II352771 A

NTI: 013869 | KNORR: II352771 A, K002239001 A | NTI: 023127



REP. CIL. FREIO BLIND. C/GAXETA
CENTRAL(CARC.ALUM.
KIT REP. CILINDRO FRENO BLINDADO
BRAKE CHAMBER CENTRAL REP. KIT W/
SEALS



CILINDRO COMBINADO
CILINDRO COMBINADO
BRAKE CHAMBER KNOOR TYPE

MERCEDES: 1938, 1944, 1944S, ACCELO915C, LS1633, LS1938

KNORR: II352771 E

NTI: 023896 | KNORR: II352771 E, K119163 E



REP. CIL. FREIO BLIND.C/GAXETA CENTRAL(CARC.FERRO)
KIT REP. CILINDRO FRENO BLINDADO
BRAKE CHAMBER CENTRAK REP. KIT 9W



CILINDRO COMBINADO
CILINDRO COMBINADO
BRAKE CHAMBER KNOOR TYPE

MERCEDES: 1938, 1944, ACCELO915C, LS1633, LS1938, OF1418, OF1722

KNORR: II352771 R

NTI: 026907 | KNORR: II352771 R



REP. CIL. FREIO BLINDADO =KNORR=
REPARACION CILINDRO FRENO
BRAKE CYLINDER REPAIR KIT



CILINDRO COMBINADO
CILINDRO COMBINADO
BRAKE CHAMBER KNOOR TYPE

MERCEDES: 1938, 1944, ACCELO915C, LS1633, LS1938

KNORR: K11916360

NTI: 024700 | KNORR: K11916360



REP. CIL. FREIO BLINDADO C/GAXETA CENTRAL
KIT REP. CILINDRO FRENO BLINDADO
BRAKE CHAMBER CENTRAK REP. KIT 9W



CILINDRO COMBINADO
CILINDRO COMBINADO
BRAKE CHAMBER KNOOR TYPE

MERCEDES: 1728, AXOR1933, AXOR2035, AXOR2040, AXOR2533, AXOR2535, AXOR2536, AXOR2540, AXOR2541, AXOR2544, AXOR2640, AXOR2644, AXOR2831, AXOR3340, AXOR3344, O500 M, O500 R, O500 RS, O500 RSD, O500 U, O500 UA, OF1418, OF1721, OF1722

KNORR: II15183

NTI: 015596 | KNORR: I90229, II15183 | NTI: 023130



REP. CIL. FREIO C/DIAFR. 12/16=
KIT REP. CIL. FRENO C/ DIAFR. 12/16
BRAKE CHAMBER REP. KIT W/ DIAPHRAGM
12X16



CILINDRO TRISTOP
CILINDRO TRISTOP
BRAKE TRISTOP

MERCEDES: 1218, 1418, 1418K, L1113, L1114, L1118, L1218, L1418, L1418 E, LA1113, LA1418, LAK1113, LAK1418, LK1113, LS1113

KNORR: I82914

NTI: 007206 | KNORR: I82913, I82914, I83581 | NTI: 022656



REP. CIL. FREIO C/DIAFR. KNORR =TIPO 16/
24=
REPARACION CIL. TRISTOP 16X24"
BRAKE CHAMBER REP. KIT W/ DIAPHRAGM
16X24



CILINDRO TRISTOP
CILINDRO TRISTOP
BRAKE TRISTOP

MERCEDES: 1414, 1418, 1514, 1518, 1520, 1714, 1718, 1718K, 1720, 1723, 2423B, 2423K, 2428, ATEGO1315, ATEGO1418, L1414, L1418, L1420, L1513, L1514, L1516, L1517, L1518, L1519, L1520, L1614, L1618, L1620, L1621, L1622, L1625, LK1418, LK1513, LK1514, LK1516, LK1517, LK1518, LK1519, LK1520, LK1614, LK1618, LK1620, LK1625, LS1313, LS1314, LS1316, LS1318, LS1513, LS1516, LS1519, LS1520, LS1524, LS1525, LS1621, LS2636, O500 RSD, OF1218, OF1315, OF1318, OF1620, OF1721, OF1721 M, OH1313, OH1315, OH1316, OH1317, OH1318, OH1418



KNORR: T06698695A

NTI: 005850 | NTI: 024371, 024372 | VW: T06698695A



REP. CIL. FREIO KNORR (ESTACIONARIO)
JUEGO DE REPARO CILINDRO FRENO
ESTAC. KNORR
BRAKE CHAMBER REP. KIT (PARKING)



CIL. ESTACIONAMENTO
CIL. ESTACIONAMENTO
STOP CYLINDER

VW: 6.90, 7.110S, 7.90

KNORR: I82914 P

NTI: 007491 | KNORR: I82913 P, I82914 P, I83581 P, I85219 P | NTI: 009196, 022716, 023212



REP. CIL. FREIO S/DIAFR. KNORR =TIPO 24=
REPARACION CIL. TRISTOP 16X24"
BRAKE CHAMBER REP. KIT NO DIAPHRAGM
TYPE 24



CILINDRO TRISTOP
CILINDRO TRISTOP
BRAKE TRISTOP

MERCEDES: 1414, 1418, 1514, 1518, 1520, 1714, 1718, 1718K, 1720, 1723, 2423B, 2423K, 2428, ATEGO1315, ATEGO1418, L1414, L1418, L1420, L1513, L1514, L1516, L1517, L1518, L1519, L1520, L1614, L1618, L1620, L1621, L1622, L1625, LK1418, LK1513, LK1514, LK1516, LK1517, LK1518, LK1519, LK1520, LK1614, LK1618, LK1620, LK1625, LS1313, LS1314, LS1316, LS1318, LS1513, LS1516, LS1519, LS1520, LS1524, LS1525, LS1621, LS2636, O500 RSD, OF1218, OF1315, OF1318, OF1620, OF1721, OF1721 M, OH1313, OH1315, OH1316, OH1317, OH1318, OH1418

KNORR: K02520002

NTI: 015686 | KNORR: K02520002



REP. CIL. FREIO TIPO 24 (EMERGENCIA)
REP. CIL. FREIO TIPO 24 (EMERGENCIA)
BRAKE CHAMBER REP. KIT TIPO 24 FOR
EMERGENCY



CILINDRO COMBINADO
CILINDRO COMBINADO
BRAKE CHAMBER KNORR TYPE

MERCEDES: 1016 NEW ACCELO, 1728, 2035S, 2040S, 2044S, 2423B, 2423K, 2533S, 2540S, 2644S, 2726B, 2726K, 815 NEW ACCELO, ACCELO915C, AXOR1933, AXOR2035 S, AXOR2040 S, AXOR2535 S, AXOR2540 S, AXOR2640 S, AXOR2644 S, AXOR2831, AXOR3340, AXOR3344, AXOR4143, AXOR4144, L1634, LO916, LS1634, LS2533 6X2, O500 M, O500 R, O500 RDS, O500 RS, O500 RSD, O500 RSDD, O500 U, O500 UA, OF1218, OF1418, OF1519, OF1721, OF1722, OF1730, OH1313, OH1315, OH1316, OH1317, OH1318, OH1418

KNORR: I115183 P

NTI: 015592 | KNORR: I90229 P, I115183 P | NTI: 023133



REP. CIL. S/DIAFR. =TIPO 12/16=
KIT REP. CIL. S/ DIAFR. =TIPO 12/16=
BRAKE CHAMBER REP. KIT T12/16 (NO
DIAPHRAGM



CILINDRO TRISTOP
CILINDRO TRISTOP
BRAKE TRISTOP

MERCEDES: 1218, 1418, 1418K, L1113, L1114, L1118, L1218, L1418, L1418 E, LA1113, LA1418, LAK1113, LAK1418, LK1113, LS1113



VARGA: T13607965

NTI: 005321 | VARGA: T13607965



MOLA INF. CUICA TRAS. VARGA
MUELLE
BRAKE CHAMBER LOWER SPRING



CAMARA FREIO SPRING BRAKE 24X30
CAMARA DE AIRE SPRING BRAKE
DOUBLE BRAKE CHAMBER 24X30

FORD: 1215, 1215CUM, 1217 CUMMINS, 1316 CHILE, 1317, 1317 4X2, 1317E 4X2, 1319 4X2, 1415, 1415CUM, 1416 ARG, 1417, 1417 CUMMINS, 1422, 1516 CHILE, 1517 4X2, 1517E 4X2, 1519 4X2, 1617, 1622, 1716 ARG., 1717, 1722, 1722 4X2, 1723 4X2, 2422 6X2, 2422E 6X2, 2423 6X2, 2428 6X2, 2428E 6X2, 2429 6X2, B1618 ONIBUS, B1621 ONIBUS, F12000, F12000L, F13000, F14000HD, F19000, F21000, F7000, F8000, FT7000 | SCANIA: 110, 111, F112, F113, K112, K113, L113, LK140, LK141, R112, R113, R142, T112, T113, T142 | VW: 11.130, 11.140, 12.140, 12.140H, 12.140T, 12.170BT, 12.180, 13-190, 13.130, 13.150, 13.170, 13.170E, 13.180, 13.180E, 13.180E CONSTELLATION, 13.190, 14.140, 14.150, 14.170, 14.170BT, 14.180, 14.200, 14.220, 15-190, 15.170, 15.170E, 15.180, 15.180E, 15.180E CONSTELLATION, 15.180EOD, 15.190E, 15.190EOD, 16.170, 16.180 OD, 16.180CO, 16.200, 16.210CO, 16.220, 16.220 LEITO, 16.300, 17.180 CUMMINS EURO 3, 17.180 MWM EURO 3, 17.210, 17.210OD, 17.220, 17.220 CUMMINS EURO 3, 17.220 MWM EURO 3, 17.250E, 17.250E CONSTELLATION, 17.300, 17.310, 18.310, 23.210, 23.220, 23.250E, 23.310, 24.220, 24.220 CUMMINS EURO 3, 24.220 MWM EURO 3, 24.250, 24.250E, 26.220, 26.260, 26.260E, 26.300, 26.310, 31.260, 31.260E, 31.310, 35.300, 35.300 LEITO, 35.300H, 40.300, 40.300 LEITO

VARGA: SRFM00068

NTI: 013005 | NTI: 023760 | VARGA: SRFM00068



REP. CAM. DUPLA 24/30 (30/30)
REPARACION CAMARA DE FRENO MUELLE
BRAKE CHAMBER REPAIR KIT 24/30 30/30



CAMARA FREIO SPRING BRAKE 24X30
CAMARA DE AIRE SPRING BRAKE
DOUBLE BRAKE CHAMBER 24X30

FORD: 1215, 1215CUM, 1217 CUMMINS, 1316 CHILE, 1317, 1317 4X2, 1317E 4X2, 1319 4X2, 1415, 1415CUM, 1416 ARG, 1417, 1417 CUMMINS, 1422, 1516 CHILE, 1517 4X2, 1517E 4X2, 1519 4X2, 1617, 1622, 1716 ARG., 1717, 1722, 1722 4X2, 1723 4X2, 2422 6X2, 2422E 6X2, 2423 6X2, 2428 6X2, 2428E 6X2, 2429 6X2, B1618 ONIBUS, B1621 ONIBUS, F12000, F12000L, F13000, F14000HD, F19000, F21000, F7000, F8000, FT7000 | SCANIA: 110, 111, F112, F113, K112, K113, L113, LK140, LK141, R112, R113, R142, T112, T113, T142 | VW: 11.130, 11.140, 12.140, 12.140H, 12.140T, 12.170BT, 12.180, 13-190, 13.130, 13.150, 13.170, 13.170E, 13.180, 13.180E, 13.180E CONSTELLATION, 13.190, 14.140, 14.150, 14.170, 14.170BT, 14.180, 14.200, 14.220, 15-190, 15.170, 15.170E, 15.180, 15.180E, 15.180E CONSTELLATION, 15.180EOD, 15.190E, 15.190EOD, 16.170, 16.180 OD, 16.180CO, 16.200, 16.210CO, 16.220, 16.220 LEITO, 16.300, 17.180 CUMMINS EURO 3, 17.180 MWM EURO 3, 17.210, 17.210OD, 17.220, 17.220 CUMMINS EURO 3, 17.220 MWM EURO 3, 17.250E, 17.250E CONSTELLATION, 17.300, 17.310, 18.310, 23.210, 23.220, 23.250E, 23.310, 24.220, 24.220 CUMMINS EURO 3, 24.220 MWM EURO 3, 24.250, 24.250E, 26.220, 26.260, 26.260E, 26.300, 26.310, 31.260, 31.260E, 31.310, 35.300, 35.300 LEITO, 35.300H, 40.300, 40.300 LEITO

VARGA: SRFM0068P

NTI: 017562 | VARGA: SRFM0068P



REP. CAM. DUPLA CENTRAL =MOD.VARGA=
REP. CAM. DUPLA CENTRAL =MOD.VARGA=
BRAKE CHAMBER CENTRAL REPAIR KIT
VARGA TYPE



CAMARA FREIO SPRING BRAKE 24X30
CAMARA DE AIRE SPRING BRAKE
DOUBLE BRAKE CHAMBER 24X30

FORD: 1215, 1215CUM, 1217 CUMMINS, 1316 CHILE, 1317, 1317 4X2, 1317E 4X2, 1319 4X2, 1415, 1415CUM, 1416 ARG, 1417, 1417 CUMMINS, 1422, 1516 CHILE, 1517 4X2, 1517E 4X2, 1519 4X2, 1617, 1622, 1716 ARG., 1717, 1722, 1722 4X2, 1723 4X2, 2422 6X2, 2422E 6X2, 2423 6X2, 2428 6X2, 2428E 6X2, 2429 6X2, B1618 ONIBUS, B1621 ONIBUS, F12000, F12000L, F13000, F14000HD, F19000, F21000, F7000, F8000, FT7000 | SCANIA: 110, 111, F112, F113, K112, K113, L113, LK140, LK141, R112, R113, R142, T112, T113, T142 | VW: 11.130, 11.140, 12.140, 12.140H, 12.140T, 12.170BT, 12.180, 13-190, 13.130, 13.150, 13.170, 13.170E, 13.180, 13.180E, 13.180E CONSTELLATION, 13.190, 14.140, 14.150, 14.170, 14.170BT, 14.180, 14.200, 14.220, 15-190, 15.170, 15.170E, 15.180, 15.180E, 15.180E CONSTELLATION, 15.180EOD, 15.190E, 15.190EOD, 16.170, 16.180 OD, 16.180CO, 16.200, 16.210CO, 16.220, 16.220 LEITO, 16.300, 17.180 CUMMINS EURO 3, 17.180 MWM EURO 3, 17.210, 17.210OD, 17.220, 17.220 CUMMINS EURO 3, 17.220 MWM EURO 3, 17.250E, 17.250E CONSTELLATION, 17.300, 17.310, 18.310, 23.210, 23.220, 23.250E, 23.310, 24.220, 24.220 CUMMINS EURO 3, 24.220 MWM EURO 3, 24.250, 24.250E, 26.220, 26.260, 26.260E, 26.300, 26.310, 31.260, 31.260E, 31.310, 35.300, 35.300 LEITO, 35.300H, 40.300, 40.300 LEITO



BENDIX: 1953052

NTI: 007456 | BENDIX: 1953052



MOLA SERVICIO SPRING BRAKE 30
MUELLE
SERVICE SPRING TYPE 30



CAMARA SPRING BRAKE 30
CAMARA SPRING BRAKE 30
BRAKE CHAMBER 30

SCANIA: 111, F112, F113, K112, K113, LK140, LK141, R112, R113, R142, T112, T113, T142

BENDIX: 203930

NTI: 000714 | NTI: 003448, 005327, 006382, 006540, 020882, 022620, 022749, 028510, 028511 | SCANIA: 203930



MOLA SPRING BRAKE 30X30
MUELLE FRENO TRASERO
BRAKE SPRING REAR



CAMARA FREIO DUPLA 30X30 =M16=
CAMARA FRENO DOBLE
DOUBLE BRAKE CHAMBER 30X30 M16

SCANIA: 110, 111, F112, F113, K112, K113, L113, LK140, LK141, R112, R113, R142, T112, T113, T142

BENDIX: 147048302

NTI: 007467 | BENDIX: 147048302 | NTI: 023276, 023277, 023413, 023617



PARAF. DESATUADOR CUICA 24/30 / 30/30
TORNILLO
BRAKE CHAMBER SCREW

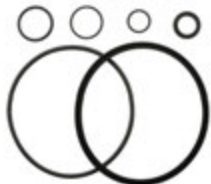


CAMARA FREIO SPRING BRAKE 24X30
CAMARA DE AIRE SPRING BRAKE
DOUBLE BRAKE CHAMBER 24X30

AGRALE: 10.000 4,8H MWM EURO V SEM ABS, VOLARE W8 SEGUNDA EDICAO | FORD: 1215, 1215CUM, 1217 CUMMINS, 1316 CHILE, 1317, 1317 4X2, 1317E 4X2, 1319 4X2, 1415, 1415CUM, 1416 ARG, 1417, 1417 CUMMINS, 1422, 1516 CHILE, 1517 4X2, 1517E 4X2, 1519 4X2, 1617, 1622, 1716 ARG., 1717, 1722, 1722 4X2, 1723 4X2, 2421, 2422, 2422 6X2, 2422E 6X2, 2423 6X2, 2425, 2428 6X2, 2428E 6X2, 2429 6X2, 2622, 2626, 2630, 2631, 712, 814, 815, 815E, 815S, 915, B1618 ONIBUS, B1621 ONIBUS, F12000, F12000L, F13000, F14000, F14000HD, F16000, F19000, F21000, F7000, F8000, FT7000 | IVECO: CURSOR, EUROARGO, NOVO STRALIS, ONIBUS CC118E22, STRALIS, TECTOR, VERTIS | SCANIA: 110, 111, F112, F113, K112, K113, L113, LK140, LK141, R112, R113, R142, T112, T113, T142 | VOLVO: B10L, B10M, B12, B12B, F10, F12, FH, FH12, FH16, FL10, FL12, FM, FM10, FM12, N10, N12, NH12, NL10, NL12, VM | VW: 11.130, 11.140, 12.140, 12.140H, 12.140T, 12.170BT, 12.180, 13-190, 13.130, 13.150, 13.170, 13.170E, 13.180, 13.180E, 13.180E CONSTELLATION, 13.190, 14.140, 14.150, 14.170, 14.170BT, 14.180, 14.200, 14.220, 15-190, 15.170, 15.170E, 15.180, 15.180E, 15.180E CONSTELLATION, 15.180EOD, 15.190, 15.190E, 15.190EOD, 16.170, 16.180 OD, 16.180CO, 16.200, 16.210CO, 16.220, 16.220 LEITO, 16.300, 17.180 CUMMINS EURO 3, 17.180 MWM EURO 3, 17.210, 17.210E OD, 17.210OD, 17.220, 17.220 CUMMINS EURO 3, 17.220 MWM EURO 3, 17.250E, 17.250E CONSTELLATION, 17.300, 17.310, 18.310, 23.210, 23.220, 23.250E, 23.310, 24.220, 24.220 CUMMINS EURO 3, 24.220 MWM EURO 3, 24.250, 24.250E, 24.250ECONSTELLATION, 26.220, 26.260, 26.260E, 26.300, 26.310, 31.260, 31.260E, 31.310, 35.300, 35.300 LEITO, 35.300H, 40.300, 40.300 LEITO, 5.140 MWM DELIVERY, 5.140EOD, 7.100, 7.110, 7.120, 8.100, 8.120, 8.120OD, 8.140, 8.140CE, 8.140CKD, 8.140CO, 8.150, 8.150 MWM DELIVERY, 8.150E, 8.150E PLUS, 8.150EOD, 8.150OD, 9.150E, 9.150E CUMMINS DELIVERY, 9.150EOD, 9.150OD, L.80

BENDIX: 30006 V

NTI: 010044 | BENDIX: 30006 V



REP. CAM. IMPORT. TIPO 24
REPARACION
BRAKE CHAMBER REPAIR KIT T.24



CAMARA SPRING BRAKE 30
CAMARA SPRING BRAKE 30
BRAKE CHAMBER 30

VOLVO: B7, N10, N12

BENDIX: 30009 V

NTI: 016194 | BENDIX: 30009 V



REP. CAM. IMPORT. TIPO 24 C/RETENTOR
MAIOR
REPARACION
BRAKE CHAMBER REPAIR KIT T.24 W/
LARGER RETAINER



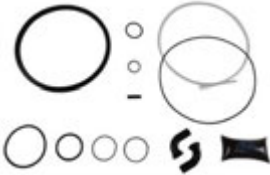
CAMARA SPRING BRAKE 30
CAMARA SPRING BRAKE 30
BRAKE CHAMBER 30

VOLVO: B10M, B58E, N10, N12, NL10, NL12



BENDIX: 21600

NTI: 017081 | BENDIX: 21600 | NTI: 023481



REP. CAM. SPR. BRAKE 7" =IMPORTADO=
REP. CAM. SPR. BRAKE 7" =IMPORTADO=
BRAKE CHAMBER REPAIR KIT 7" EUROPEAN
TYPE



CAMARA SPRING BRAKE 30
CAMARA SPRING BRAKE 30
BRAKE CHAMBER 30

SCANIA: 114, 124, 164, 94, F113, K113, K114, K124, P.G.R., R113, R143, T113

BENDIX: 3750009872

NTI: 010755 | BENDIX: 3750009872 | NTI: 023280, 023281, 023492



REP. CINTA SPRING BRAKE 24"
REPARACION
BRAKE CHAMBER BRECKT REPAIR KIT 24"



CAMARA SPRING BRAKE 30
CAMARA SPRING BRAKE 30
BRAKE CHAMBER 30

FORD: 1215, 1215CUM, 1217 CUMMINS, 1316 CHILE, 1317, 1317 4X2, 1317E 4X2, 1319 4X2, 1415, 1415CUM, 1416 ARG, 1417, 1417 CUMMINS, 1422, 1516 CHILE, 1517 4X2, 1517E 4X2, 1519 4X2, 1617, 1622, 1716 ARG., 1717, 1717E 4X2, 1722, 1722 4X2, 1722E 4X2, 1723 4X2, 2422 6X2, 2422E 6X2, 2423 6X2, 2428 6X2, 2428E 6X2, 2429 6X2, 2622E 6X4, 2628E 6X4, 2932E 6X4, 4432E 4X2, 4532E/1832E, 5032E 6X4, 6332E 6X4, 815E, B1618 ONIBUS, B1621 ONIBUS, F12000, F12000L, F13000, F14000HD, F19000, F21000, F7000, F8000, FT7000 | IVECO: CURSOR, EUROCARGO, NOVO STRALIS, NOVO TRAKKER, ONIBUS 170S28, STRALIS, TECTOR, VERTIS | SCANIA: 110, 111, F112, F113, K112, K113, L113, LK140, LK141, R112, R113, R142, T112, T113, T142 | VW: 11.130, 11.140, 12.140, 12.140H, 12.140T, 12.170BT, 12.180, 13-190, 13.130, 13.150, 13.170, 13.170E, 13.180, 13.180E, 13.180E CONSTELLATION, 13.190, 14.140, 14.150, 14.170, 14.170BT, 14.180, 14.200, 14.220, 15-190, 15.170, 15.170E, 15.180, 15.180E, 15.180E CONSTELLATION, 15.180EOD, 15.190, 15.190E, 15.190EOD, 16.170, 16.180 OD, 16.180CO, 16.200, 16.210CO, 16.220, 16.220 LEITO, 16.300, 17.180 CUMMINS EURO 3, 17.180 MWM EURO 3, 17.210, 17.210OD, 17.220, 17.220 CUMMINS EURO 3, 17.220 MWM EURO 3, 17.250E, 17.250E CONSTELLATION, 17.300, 17.310, 18.310, 23.210, 23.220, 23.250E, 23.310, 24.220, 24.220 CUMMINS EURO 3, 24.220 MWM EURO 3, 24.250, 24.250E, 24.250ECONSTELLATION, 26.220, 26.260, 26.260E, 26.300, 26.310, 31.260, 31.260E, 31.310, 35.300, 35.300 LEITO, 35.300H, 40.300, 40.300 LEITO

BENDIX: 3011FM72

NTI: 010756 | BENDIX: 3011FM72 | NTI: 023774, 023775



TAMPA SERVICIO TIPO 24"
TAPA SERVICIO TIPO 24
COVER SERVICE BRAKE CHAMBER 24"



CAMARA SPRING BRAKE 30
CAMARA SPRING BRAKE 30
BRAKE CHAMBER 30

FORD: 1215CUM, 1217 CUMMINS, 1316 CHILE, 1317, 1317 4X2, 1317E 4X2, 1319 4X2, 1415CUM, 1416 ARG, 1417, 1417 CUMMINS, 1422, 1516 CHILE, 1517 4X2, 1517E 4X2, 1519 4X2, 1617, 1622, 1716 ARG., 1717, 1722, 1722 4X2, 1723 4X2, 2422 6X2, 2422E 6X2, 2423 6X2, 2428 6X2, 2428E 6X2, 2429 6X2, F12000L | VW: 12.140H, 12.140T, 12.170BT, 13.150, 13.170, 13.180, 13.190, 17.180 CUMMINS EURO 3, 17.180 MWM EURO 3, 17.220 CUMMINS EURO 3, 17.220 MWM EURO 3, 17.250E CONSTELLATION, 24.220 CUMMINS EURO 3, 24.220 MWM EURO 3, 24.250ECONSTELLATION



DIVERSOS: 246428

NTI: 001004 | NTI: 006314, 006315 | SCANIA: 10570852, 10571791, 1331415, 1331422, 1372917, 1446059, 1571791, 246428, 571706, 57...



CAMARA FREIO DUPLA 30X30 =M16=
CAMARA FRENO DOBLE
DOUBLE BRAKE CHAMBER 30X30 M16

DIVERSOS: - | SCANIA: 110, 111, F112, F113, K112, K113, L113, LK140, LK141, R112, R113, R142, T112, T113, T142

DIVERSOS: TJG607941

NTI: 006264 | NTI: 021053, 021054, 021055 | VW: TAC607597, TJG607941



ASSENTO MOLA CUICA FREIO TRAS. =30X30
(3 PONTAS)=
ARANDELA MUELLE FRENO TRASERA
BRAKE CHAMBER SEAT REAR



CAMARA FREIO SPRING BRAKE 24X30
CAMARA DE AIRE SPRING BRAKE
DOUBLE BRAKE CHAMBER 24X30

DIVERSOS: - | FORD: 1215, 1215CUM, 1217 CUMMINS, 1316 CHILE, 1317, 1317 4X2, 1317E 4X2, 1319 4X2, 1415, 1415CUM, 1416 ARG, 1417, 1417 CUMMINS, 1422, 1516 CHILE, 1517 4X2, 1517E 4X2, 1519 4X2, 1617, 1622, 1716 ARG., 1717, 1722, 1722 4X2, 1723 4X2, 2422 6X2, 2422E 6X2, 2423 6X2, 2428 6X2, 2428E 6X2, 2429 6X2, B1618 ONIBUS, B1621 ONIBUS, F12000, F12000L, F13000, F14000HD, F19000, F21000, F7000, F8000, FT7000 | SCANIA: 110, 111, F112, F113, K112, K113, L113, LK140, LK141, R112, R113, R142, T112, T113, T142 | VW: 11.130, 11.140, 12.140, 12.140H, 12.140T, 12.170BT, 12.180, 13-190, 13.130, 13.150, 13.170, 13.170E, 13.180, 13.180E, 13.180E CONSTELLATION, 13.190, 14.140, 14.150, 14.170, 14.170BT, 14.180, 14.200, 14.220, 15-190, 15.170, 15.170E, 15.180, 15.180E, 15.180E CONSTELLATION, 15.180EOD, 15.190E, 15.190EOD, 16.170, 16.180 OD, 16.180CO, 16.200, 16.210CO, 16.220, 16.220 LEITO, 16.300, 17.180 CUMMINS EURO 3, 17.180 MWM EURO 3, 17.210, 17.210OD, 17.220, 17.220 CUMMINS EURO 3, 17.220 MWM EURO 3, 17.250E, 17.250E CONSTELLATION, 17.300, 17.310, 18.310, 23.210, 23.220, 23.250E, 23.310, 24.220, 24.220 CUMMINS EURO 3, 24.220 MWM EURO 3, 24.250, 24.250E, 24.250ECONSTELLATION, 26.220, 26.260, 26.260E, 26.300, 26.310, 31.260, 31.260E, 31.310, 35.300, 35.300 LEITO, 35.300H, 40.300, 40.300 LEITO

DIVERSOS: 2RD607953

NTI: 005309 | NTI: 021201, 021202 | VW: 2RD607953



MOLA CUICA TRAS. 16X24
MUELLE CARCAZA AIRE FRENO EMERG.
TRASERO
EMERGENCY BRAKE AIR CHAMBER SPRING
REAR



CAMARA FREIO SISTEMA BENDIX
CAMARA FREIO SISTEMA BENDIX
BRAKE CHAMBER BENDIX SYSTEM

DIVERSOS: - | VW: 11.130, 11.140, 12.140H, 12.140T, 12.170BT, 13.130, 14.140, 16.180 OD, 16.210CO, 5.140 MWM DELIVERY, 7.100, 7.110, 7.120, 8.100, 8.120, 8.120OD, 8.140, 8.140CE, 8.140CKD, 8.140CO, 8.150, 8.150 EOD, 8.150 MWM DELIVERY, 8.150 OD, 8.150E, 8.150E PLUS, 9.150E, 9.150E CUMMINS DELIVERY, 9.150EOD, 9.150OD, L.80

DIVERSOS: TJG607965

NTI: 005325 | NTI: 021244, 021245 | VW: TJG607965



MOLA PEQUENA CAMARA 30/30
MUELLE PEQUENA CAMARA 30 X 30
30X30 CHAMBER SPRING



CAMARA FREIO SPRING BRAKE 24X30
CAMARA DE AIRE SPRING BRAKE
DOUBLE BRAKE CHAMBER 24X30

DIVERSOS: - | FORD: 1215, 1215CUM, 1217 CUMMINS, 1316 CHILE, 1317, 1317 4X2, 1317E 4X2, 1319 4X2, 1415, 1415CUM, 1416 ARG, 1417, 1417 CUMMINS, 1422, 1516 CHILE, 1517, 1517 4X2, 1517E 4X2, 1519 4X2, 1521, 1617, 1622, 1630, 1716 ARG., 1717, 1717E 4X2, 1722, 1722 4X2, 1722E 4X2, 1723 4X2, 1730 ARG., 1731, 2421, 2422, 2422 6X2, 2422E 6X2, 2423 6X2, 2425, 2428 6X2, 2428E 6X2, 2429 6X2, 2622, 2622E 6X4, 2626, 2628E 6X4, 2630, 2631, 2632E 6X4, 2932E 6X4, 3224, 4030, 4031, 4331, 4432E 4X2, 4532E/1832E, 5032E 6X4, 6332E 6X4, B1618 ONIBUS, B1621 ONIBUS, F12000, F12000L, F13000, F14000, F14000HD, F16000, F19000, F21000, F7000, F8000, FT7000 | SCANIA: 110, 111, F112, F113, K112, K113, L113, LK140, LK141, R112, R113, R142, T112, T113, T142 | VW: 11.130, 11.140, 12.140, 12.140H, 12.140T, 12.170BT, 12.180, 13-190, 13.130, 13.150, 13.170, 13.170E, 13.180, 13.180E, 13.180E CONSTELLATION, 13.190, 14,170BT ARGENT., 14.140, 14.150, 14.170, 14.170BT, 14.180, 14.200, 14.220, 15-190, 15.170, 15.170E, 15.180, 15.180E, 15.180E CONSTELLATION, 15.180EOD, 15.190E, 15.190EOD, 16.170, 16.180 OD, 16.180CO, 16.200, 16.210CO, 16.220, 16.220 LEITO, 16.300, 17.180 CUMMINS EURO 3, 17.180 MWM EURO 3, 17.210, 17.210OD, 17.220, 17.220 CUMMINS EURO 3, 17.220 MWM EURO 3, 17.240OT, 17.250E, 17.250E CONSTELLATION, 17.260EOT, 17.300, 17.310, 17.320E CONSTELLATION, 18.310, 18.310OT, 18.320EOT, 23.210, 23.220, 23.250E, 23.310, 24.220, 24.220 CUMMINS EURO 3, 24.220 MWM EURO 3, 24.250, 24.250E, 24.250ECONSTELLATION, 24.320ECONSTELLATION, 26.220, 26.260, 26.260 CONSTELLATION, 26.260E, 26.300, 26.310, 31.260, 31.260 CONSTELLATION, 31.260E, 31.310, 31.320E CONSTELLATION, 31.370E CONSTELLATION, 35.300, 35.300 LEITO, 35.300H, 40.300, 40.300 LEITO



DIVERSOS: TJG607959

NTI: 005323 | NTI: 021223, 021224, 021225, 022637 | VW: TJG607959



MOLA RET. CAM. CENTRAL CUICA TRAS.
MUELLE
SPRING BRAKE RETAINING SPRING REAR



CAMARA FREIO SPRING BRAKE 24X30
CAMARA DE AIRE SPRING BRAKE
DOUBLE BRAKE CHAMBER 24X30

DIVERSOS: - | FORD: 1215, 1215CUM, 1217 CUMMINS, 1316 CHILE, 1317, 1317 4X2, 1317E 4X2, 1319 4X2, 1415, 1415CUM, 1416 ARG, 1417, 1417 CUMMINS, 1422, 1516 CHILE, 1517 4X2, 1517E 4X2, 1519 4X2, 1617, 1622, 1716 ARG., 1717, 1722, 1722 4X2, 1723 4X2, 2421, 2422, 2422 6X2, 2422E 6X2, 2423 6X2, 2428 6X2, 2428E 6X2, 2429 6X2, 2622, 2622E 6X4, 2626, 2628E 6X4, 2630, 2631, 3222, 712, 814/815(96/...), 815, 815E, 815S, 915, B1618 ONIBUS, B1621 ONIBUS, F12000, F12000L, F13000, F14000, F14000HD, F16000, F19000, F21000, F7000, F8000, FT7000 | SCANIA: 110, 111, F112, F113, K112, K113, L113, LK140, LK141, R112, R113, R142, T112, T113, T142 | VW: 11.130, 11.140, 12.140, 12.140H, 12.140T, 12.170BT, 12.180, 13-190, 13.130, 13.150, 13.170, 13.170E, 13.180, 13.180E, 13.180E CONSTELLATION, 13.190, 14.140, 14.150, 14.170, 14.170BT, 14.180, 14.200, 14.220, 15-190, 15.170, 15.170E, 15.180, 15.180E, 15.180E CONSTELLATION, 15.180EOD, 15.190E, 15.190EOD, 16.170, 16.180 OD, 16.180CO, 16.200, 16.210CO, 16.220, 16.220 LEITO, 16.300, 17.180 CUMMINS EURO 3, 17.180 MWM EURO 3, 17.210, 17.210OD, 17.220, 17.220 CUMMINS EURO 3, 17.250E, 17.250E CONSTELLATION, 17.300, 17.310, 18.310, 23.210, 23.220, 23.250E, 23.310, 24.220, 24.220 CUMMINS EURO 3, 24.220 MWM EURO 3, 24.250, 24.250E, 24.250ECONSTELLATION, 24.320E, 26.220, 26.260, 26.260E, 26.300, 26.310, 31.260, 31.260E, 31.310, 35.300, 35.300 LEITO, 35.300H, 40.300, 40.300 LEITO, 8.120OD, 8.140CE, 8.140CKD, 8.140CO, 8.150 OD, 8.150E, 8.150E PLUS, 9.150E, 9.150E CUMMINS DELIVERY, 9.150OD

DIVERSOS: 891900 AA

NTI: 024106 | ADER: 891900 AA | NTI: 024265



REP. CAM. SPR. BRAKE =16/24 S/DIAF. =
ALUMINIO=
KIT REPARACION CAM. DOBLE
BRAKE CHAMBER REPAIR KIT 24/30 30/30 (NO
DIAPHRAGM

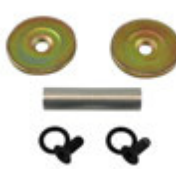


CAMARA FREIO SPRING BRAKE 24X30
CAMARA DE AIRE SPRING BRAKE
DOUBLE BRAKE CHAMBER 24X30

CARRETAS: TODAS | DIVERSOS: - | FORD: 1215, 1215CUM, 1217 CUMMINS, 1316 CHILE, 1317, 1317 4X2, 1317E 4X2, 1319 4X2, 1415, 1415CUM, 1416 ARG, 1417, 1417 CUMMINS, 1422, 1516 CHILE, 1517 4X2, 1517E 4X2, 1519 4X2, 1617, 1622, 1716 ARG., 1717, 1722, 1722 4X2, 1723 4X2, 2422 6X2, 2422E 6X2, 2423 6X2, 2428 6X2, 2428E 6X2, 2429 6X2, B1618 ONIBUS, B1621 ONIBUS, F12000, F12000L, F13000, F14000HD, F19000, F21000, F7000, F8000, FT7000 | SCANIA: 110, 111, F112, F113, K112, K113, L113, LK140, LK141, R112, R113, R142, T112, T113, T142 | VW: 11.130, 11.140, 12.140, 12.140H, 12.140T, 12.170BT, 12.180, 13-190, 13.130, 13.150, 13.170, 13.170E, 13.180, 13.180E, 13.180E CONSTELLATION, 13.190, 14.140, 14.150, 14.170, 14.170BT, 14.180, 14.200, 14.220, 15-190, 15.170, 15.170E, 15.180, 15.180E, 15.180E CONSTELLATION, 15.180EOD, 15.190E, 15.190EOD, 16.170, 16.180 OD, 16.180CO, 16.200, 16.210CO, 16.220, 16.220 LEITO, 16.300, 17.180 CUMMINS EURO 3, 17.180 MWM EURO 3, 17.210, 17.210OD, 17.220, 17.220 CUMMINS EURO 3, 17.220 MWM EURO 3, 17.250E, 17.250E CONSTELLATION, 17.300, 17.310, 18.310, 23.210, 23.220, 23.250E, 23.310, 24.220, 24.220 CUMMINS EURO 3, 24.220 MWM EURO 3, 24.250, 24.250E, 24.250ECONSTELLATION, 26.220, 26.260, 26.260E, 26.300, 26.310, 31.260, 31.260E, 31.310, 35.300, 35.300 LEITO, 35.300H, 40.300, 40.300 LEITO

DIVERSOS: 891900 X

NTI: 024778 | ADER: 891900 X



REP. CAM. SPR. BRAKE =16/24 S/DIAF.
PARCIAL
KIT REPARACION CAM. DOBLE
BRAKE CHAMBER REPAIR KIT 24/30 30/30 (NO
DIAPHRAGM



CAMARA FREIO SPRING BRAKE 24X30
CAMARA DE AIRE SPRING BRAKE
DOUBLE BRAKE CHAMBER 24X30

CARRETAS: TODAS | DIVERSOS: - | FORD: 1215, 1215CUM, 1217 CUMMINS, 1316 CHILE, 1317, 1317 4X2, 1317E 4X2, 1319 4X2, 1415, 1415CUM, 1416 ARG, 1417, 1417 CUMMINS, 1422, 1516 CHILE, 1517 4X2, 1517E 4X2, 1519 4X2, 1617, 1622, 1716 ARG., 1717, 1722, 1722 4X2, 1723 4X2, 2422 6X2, 2422E 6X2, 2423 6X2, 2428 6X2, 2428E 6X2, 2429 6X2, B1618 ONIBUS, B1621 ONIBUS, F12000, F12000L, F13000, F14000HD, F19000, F21000, F7000, F8000, FT7000 | SCANIA: 110, 111, F112, F113, K112, K113, L113, LK140, LK141, R112, R113, R142, T112, T113, T142 | VW: 11.130, 11.140, 12.140, 12.140H, 12.140T, 12.170BT, 12.180, 13-190, 13.130, 13.150, 13.170, 13.170E, 13.180, 13.180E, 13.180E CONSTELLATION, 13.190, 14.140, 14.150, 14.170, 14.170BT, 14.180, 14.200, 14.220, 15-190, 15.170, 15.170E, 15.180, 15.180E, 15.180E CONSTELLATION, 15.180EOD, 15.190E, 15.190EOD, 16.170, 16.180 OD, 16.180CO, 16.200, 16.210CO, 16.220, 16.220 LEITO, 16.300, 17.180 CUMMINS EURO 3, 17.180 MWM EURO 3, 17.210, 17.210OD, 17.220, 17.220 CUMMINS EURO 3, 17.220 MWM EURO 3, 17.250E, 17.250E CONSTELLATION, 17.300, 17.310, 18.310, 23.210, 23.220, 23.250E, 23.310, 24.220, 24.220 CUMMINS EURO 3, 24.220 MWM EURO 3, 24.250, 24.250E, 24.250ECONSTELLATION, 26.220, 26.260, 26.260E, 26.300, 26.310, 31.260, 31.260E, 31.310, 35.300, 35.300 LEITO, 35.300H, 40.300, 40.300 LEITO

DIVERSOS: 891900 B

NTI: 023813 | ADER: 891900 B, 962300 B | NTI: 023934, 023935



REP. CAM. SPR. BRAKE =30/30 24/30 S/DIAFR.
KIT REPARACION CAM. DOBLE
BRAKE CHAMBER REPAIR KIT 24/30 30/30 (NO
DIAPHRAGM



CAMARA FREIO SPRING BRAKE 24X30
CAMARA DE AIRE SPRING BRAKE
DOUBLE BRAKE CHAMBER 24X30

CARRETAS: TODAS | DIVERSOS: - | FORD: 1215, 1215CUM, 1217 CUMMINS, 1316 CHILE, 1317, 1317 4X2, 1317E 4X2, 1319 4X2, 1415, 1415CUM, 1416 ARG, 1417, 1417 CUMMINS, 1422, 1516 CHILE, 1517 4X2, 1517E 4X2, 1519 4X2, 1617, 1622, 1716 ARG., 1717, 1722, 1722 4X2, 1723 4X2, 2422 6X2, 2422E 6X2, 2423 6X2, 2428 6X2, 2428E 6X2, 2429 6X2, B1618 ONIBUS, B1621 ONIBUS, F12000, F12000L, F13000, F14000HD, F19000, F21000, F7000, F8000, FT7000 | SCANIA: 110, 111, F112, F113, K112, K113, L113, LK140, LK141, R112, R113, R142, T112, T113, T142 | VW: 11.130, 11.140, 12.140, 12.140H, 12.140T, 12.170BT, 12.180, 13-190, 13.130, 13.150, 13.170, 13.170E, 13.180, 13.180E, 13.180E CONSTELLATION, 13.190, 14.140, 14.150, 14.170, 14.170BT, 14.180, 14.200, 14.220, 15-190, 15.170, 15.170E, 15.180, 15.180E, 15.180E CONSTELLATION, 15.180EOD, 15.190E, 15.190EOD, 16.170, 16.180 OD, 16.180CO, 16.200, 16.210CO, 16.220, 16.220 LEITO, 16.300, 17.180 CUMMINS EURO 3, 17.180 MWM EURO 3, 17.210, 17.210OD, 17.220, 17.220 CUMMINS EURO 3, 17.220 MWM EURO 3, 17.250E, 17.250E CONSTELLATION, 17.300, 17.310, 18.310, 23.210, 23.220, 23.250E, 23.310, 24.220, 24.220 CUMMINS EURO 3, 24.220 MWM EURO 3, 24.250, 24.250E, 24.250ECONSTELLATION, 26.220, 26.260, 26.260E, 26.300, 26.310, 31.260, 31.260E, 31.310, 35.300, 35.300 LEITO, 35.300H, 40.300, 40.300 LEITO



DIVERSOS: 891900 P

NTI: 010174 | ADER: 891900 P, 962300 P | NTI: 022784, 022785



REP. CAM. SPR. BRAKE 24/30-30/30 S/ DIAFR.
(PARCIAL
KIT DE REPARACION CAMARA DOBLE
BRAKE CHAMBER REPAIR KIT 24/30 30/30
(PARTIAL)



CAMARA FREIO SPRING BRAKE 24X30
CAMARA DE AIRE SPRING BRAKE
DOUBLE BRAKE CHAMBER 24X30

CARRETAS: TODAS | DIVERSOS: - | FORD: 1215, 1215CUM, 1217 CUMMINS, 1316 CHILE, 1317, 1317 4X2, 1317E 4X2, 1319 4X2, 1415, 1415CUM, 1416 ARG, 1417, 1417 CUMMINS, 1422, 1516 CHILE, 1517 4X2, 1517E 4X2, 1519 4X2, 1617, 1622, 1716 ARG., 1717, 1722, 1722 4X2, 1723 4X2, 2422 6X2, 2422E 6X2, 2423 6X2, 2428 6X2, 2428E 6X2, 2429 6X2, B1618 ONIBUS, B1621 ONIBUS, F12000, F12000L, F13000, F14000HD, F19000, F21000, F7000, F8000, FT7000 | SCANIA: 110, 111, F112, F113, K112, K113, L113, LK140, LK141, R112, R113, R142, T112, T113, T142 | VW: 11.130, 11.140, 12.140, 12.140H, 12.140T, 12.170BT, 12.180, 13-190, 13.130, 13.150, 13.170, 13.170E, 13.180, 13.180E, 13.180E CONSTELLATION, 13.190, 14.140, 14.150, 14.170, 14.170BT, 14.180, 14.200, 14.220, 15-190, 15.170, 15.170E, 15.180, 15.180E, 15.180E CONSTELLATION, 15.180EOD, 15.190E, 15.190EOD, 16.170, 16.180 OD, 16.180CO, 16.200, 16.210CO, 16.220, 16.220 LEITO, 16.300, 17.180 CUMMINS EURO 3, 17.180 MWM EURO 3, 17.210, 17.210OD, 17.220, 17.220 CUMMINS EURO 3, 17.220 MWM EURO 3, 17.250E, 17.250E CONSTELLATION, 17.300, 17.310, 18.310, 23.210, 23.220, 23.250E, 23.310, 24.220, 24.220 CUMMINS EURO 3, 24.220 MWM EURO 3, 24.250, 24.250E, 24.250ECONSTELLATION, 26.220, 26.260, 26.260E, 26.300, 26.310, 31.260, 31.260E, 31.310, 35.300, 35.300 LEITO, 35.300H, 40.300, 40.300 LEITO

DIVERSOS: 891900 PA

NTI: 023812 | ADER: 891900 PA, 962300 PA | NTI: 023936, 023937



REP. CAM. SPR. BRAKE 24/30-30/30 S/DIAFR.
PARCIAL
KIT DE REPARACION CAMARA DOBLE
BRAKE CHAMBER REPAIR KIT 24/30 30/30
(PARTIAL)



CAMARA FREIO SPRING BRAKE 24X30
CAMARA DE AIRE SPRING BRAKE
DOUBLE BRAKE CHAMBER 24X30

CARRETAS: TODAS | DIVERSOS: - | FORD: 1215, 1215CUM, 1217 CUMMINS, 1316 CHILE, 1317, 1317 4X2, 1317E 4X2, 1319 4X2, 1415, 1415CUM, 1416 ARG, 1417, 1417 CUMMINS, 1422, 1516 CHILE, 1517 4X2, 1517E 4X2, 1519 4X2, 1617, 1622, 1716 ARG., 1717, 1722, 1722 4X2, 1723 4X2, 2422 6X2, 2422E 6X2, 2423 6X2, 2428 6X2, 2428E 6X2, 2429 6X2, B1618 ONIBUS, B1621 ONIBUS, F12000, F12000L, F13000, F14000HD, F19000, F21000, F7000, F8000, FT7000 | SCANIA: 110, 111, F112, F113, K112, K113, L113, LK140, LK141, R112, R113, R142, T112, T113, T142 | VW: 11.130, 11.140, 12.140, 12.140H, 12.140T, 12.170BT, 12.180, 13-190, 13.130, 13.150, 13.170, 13.170E, 13.180, 13.180E, 13.180E CONSTELLATION, 13.190, 14.140, 14.150, 14.170, 14.170BT, 14.180, 14.200, 14.220, 15-190, 15.170, 15.170E, 15.180, 15.180E, 15.180E CONSTELLATION, 15.180EOD, 15.190E, 15.190EOD, 16.170, 16.180 OD, 16.180CO, 16.200, 16.210CO, 16.220, 16.220 LEITO, 16.300, 17.180 CUMMINS EURO 3, 17.180 MWM EURO 3, 17.210, 17.210OD, 17.220, 17.220 CUMMINS EURO 3, 17.220 MWM EURO 3, 17.250E, 17.250E CONSTELLATION, 17.300, 17.310, 18.310, 23.210, 23.220, 23.250E, 23.310, 24.220, 24.220 CUMMINS EURO 3, 24.220 MWM EURO 3, 24.250, 24.250E, 24.250ECONSTELLATION, 26.220, 26.260, 26.260E, 26.300, 26.310, 31.260, 31.260E, 31.310, 35.300, 35.300 LEITO, 35.300H, 40.300, 40.300 LEITO

DIVERSOS: 891900

NTI: 006473 | ADER: 891900, 962300 | NTI: 005848, 022786



REP. CAM. SPR. BRAKE 30/30 24/30 S/DIAFR.
KIT DE REPARACION CAM. DOBLE
BRAKE CHAMBER REPAIR KIT 24/30 30/30 (NO
DIAPHRAGM)



CAMARA FREIO SPRING BRAKE 24X30
CAMARA DE AIRE SPRING BRAKE
DOUBLE BRAKE CHAMBER 24X30

CARRETAS: TODAS | DIVERSOS: - | FORD: 1215, 1215CUM, 1217 CUMMINS, 1316 CHILE, 1317, 1317 4X2, 1317E 4X2, 1319 4X2, 1415, 1415CUM, 1416 ARG, 1417, 1417 CUMMINS, 1422, 1516 CHILE, 1517 4X2, 1517E 4X2, 1519 4X2, 1617, 1622, 1716 ARG., 1717, 1722, 1722 4X2, 1723 4X2, 2422 6X2, 2422E 6X2, 2423 6X2, 2428 6X2, 2428E 6X2, 2429 6X2, B1618 ONIBUS, B1621 ONIBUS, F12000, F12000L, F13000, F14000HD, F19000, F21000, F7000, F8000, FT7000 | SCANIA: 110, 111, F112, F113, K112, K113, L113, LK140, LK141, R112, R113, R142, T112, T113, T142 | VW: 11.130, 11.140, 12.140, 12.140H, 12.140T, 12.170BT, 12.180, 13-190, 13.130, 13.150, 13.170, 13.170E, 13.180, 13.180E, 13.180E CONSTELLATION, 13.190, 14.140, 14.150, 14.170, 14.170BT, 14.180, 14.200, 14.220, 15-190, 15.170, 15.170E, 15.180, 15.180E, 15.180E CONSTELLATION, 15.180EOD, 15.190E, 15.190EOD, 16.170, 16.180 OD, 16.180CO, 16.200, 16.210CO, 16.220, 16.220 LEITO, 16.300, 17.180 CUMMINS EURO 3, 17.180 MWM EURO 3, 17.210, 17.210OD, 17.220, 17.220 CUMMINS EURO 3, 17.220 MWM EURO 3, 17.250E, 17.250E CONSTELLATION, 17.300, 17.310, 18.310, 23.210, 23.220, 23.250E, 23.310, 24.220, 24.220 CUMMINS EURO 3, 24.220 MWM EURO 3, 24.250, 24.250E, 24.250ECONSTELLATION, 26.220, 26.260, 26.260E, 26.300, 26.310, 31.260, 31.260E, 31.310, 35.300, 35.300 LEITO, 35.300H, 40.300, 40.300 LEITO

DIVERSOS: 8017438 R

NTI: 016795 | ADER: 8017438 R | NTI: 023271, 023272, 023273



REP. DIAFR. MASTER EMERG. 30-HO
(FURADO)
REP. DIAFRAGMA MASTER EMRG. 30-HO
REPAIR KIT DIAPHRAGM MASTER
(EMERGENCY)



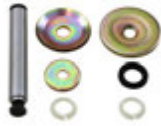
CAMARA FREIO SPRING BRAKE HO
CAMARA FREIO SPRING BRAKE HO
BRAKE CHAMBER 9 SPRING BRAKE HO

DIVERSOS: - | FORD: 1717E 4X2, 1722E 4X2 | VOLVO: VM17 | VW: 17.180 CUMMINS EURO 3, 17.180 MWM EURO 3, 17.220 CUMMINS EURO 3, 17.220 MWM EURO 3, 17.240OT, 17.260EOT, 18.310OT, 18.320EOT, 19.320E CONSTELLATION, 19.370 CONSTELLATION, 24.220 CUMMINS EURO 3, 24.220 MWM EURO 3, 25.320 CONSTELLATION, 25.370E CONSTELLATION, 26.260 CONSTELLATION, 31.260 CONSTELLATION, 31.320E CONSTELLATION, 31.370E CONSTELLATION



DIVERSOS: 8017438 P

NTI: 017031 | ADER: 8017438 P | NTI: 023268, 023269, 023270



REP. MASTER EMERG. 30-HO (FURADO)
PARCIAL
KIT REP. MASTER EMERG. 30-HO PARTIAL
MASTER REPAIR KIT 30-HO (PARTIAL)/
HOLE



CAMARA FREIO SPRING BRAKE HO
CAMARA FREIO SPRING BRAKE HO
BRAKE CHAMBER 9 SPRING BRAKE HO

DIVERSOS: - | FORD: 1717E 4X2, 1722E 4X2 | VOLVO: VM17 | VW: 17.180 CUMMINS EURO 3, 17.180 MWM EURO 3, 17.220 CUMMINS EURO 3, 17.220 MWM EURO 3, 17.240OT, 17.260EOT, 18.310OT, 18.320EOT, 19.320E CONSTELLATION, 19.370 CONSTELLATION, 24.220 CUMMINS EURO 3, 24.220 MWM EURO 3, 25.320 CONSTELLATION, 25.370E CONSTELLATION, 26.260 CONSTELLATION, 31.260 CONSTELLATION, 31.320E CONSTELLATION, 31.370E CONSTELLATION

DIVERSOS: 2RD607951

NTI: 007509 | NTI: 021059, 021061, 021062, 023246 | VW: 2RD607951



TAMPA BORRACHA PROTECAO CUICA
(BAIXA)
TAPA GOMA PROTECCION CAMARA DE AIRE
COVER PROTECTION BRAKE CHAMBER



CAMARA FREIO SPRING BRAKE 24X30
CAMARA DE AIRE SPRING BRAKE
DOUBLE BRAKE CHAMBER 24X30

DIVERSOS: - | FORD: 1215, 1215CUM, 1217 CUMMINS, 1316 CHILE, 1317, 1317 4X2, 1317E 4X2, 1319 4X2, 1415, 1415CUM, 1416 ARG, 1417, 1417 CUMMINS, 1422, 1516 CHILE, 1517 4X2, 1517E 4X2, 1519 4X2, 1617, 1622, 1716 ARG., 1717, 1722, 1722 4X2, 1723 4X2, 2422 6X2, 2422E 6X2, 2423 6X2, 2428 6X2, 2428E 6X2, 2429 6X2, B1618 ONIBUS, B1621 ONIBUS, F12000, F12000L, F13000, F14000HD, F19000, F21000, F7000, F8000, FT7000 | SCANIA: 110, 111, F112, F113, K112, K113, L113, LK140, LK141, R112, R113, R142, T112, T113, T142 | VW: 11.130, 11.140, 12.140, 12.140H, 12.140T, 12.170BT, 12.180, 13-190, 13.130, 13.150, 13.170, 13.170E, 13.180, 13.180E, 13.180E CONSTELLATION, 13.190, 14.140, 14.150, 14.170, 14.170BT, 14.180, 14.200, 14.220, 15-190, 15.170, 15.170E, 15.180, 15.180E, 15.180E CONSTELLATION, 15.180EOD, 15.190E, 15.190EOD, 16.170, 16.180 OD, 16.180CO, 16.200, 16.210CO, 16.220, 16.220 LEITO, 16.300, 17.180 CUMMINS EURO 3, 17.180 MWM EURO 3, 17.210, 17.210OD, 17.220, 17.220 CUMMINS EURO 3, 17.220 MWM EURO 3, 17.250E, 17.250E CONSTELLATION, 17.300, 17.310, 18.310, 23.210, 23.220, 23.250E, 23.310, 24.220, 24.220 CUMMINS EURO 3, 24.220 MWM EURO 3, 24.250, 24.250E, 24.250ECONSTELLATION, 26.220, 26.260, 26.260E, 26.300, 26.310, 31.260, 31.260E, 31.310, 35.300, 35.300 LEITO, 35.300H, 40.300, 40.300 LEITO, 5.140 MWM DELIVERY, 5.140EOD, 7.100, 7.110, 7.120, 8.100, 8.120, 8.120OD, 8.140, 8.140CE, 8.140CKD, 8.140CO, 8.150, 8.150 OD, 8.150E, 8.150E PLUS, 8.150EOD, 8.150MWM DELIVERY, 9.150E, 9.150E CUMMINS DELIVERY, 9.150EOD, 9.150OD

DIVERSOS: 2RD607149

NTI: 017513 | NTI: 022731, 025851 | VW: 2RD607149



TAMPA EMERGENCIA MASTER TIPO 24
TAPA SPRING BRAKE T24 (EMERGENCIA)
COVER SPRING BRAKE T24 (EMERGENCY)



CAMARA FREIO SPRING BRAKE 24X30
CAMARA DE AIRE SPRING BRAKE
DOUBLE BRAKE CHAMBER 24X30

DIVERSOS: - | FORD: 1215, 1215CUM, 1217 CUMMINS, 1316 CHILE, 1317, 1317 4X2, 1317E 4X2, 1319 4X2, 1415, 1415CUM, 1416 ARG, 1417, 1417 CUMMINS, 1422, 1516 CHILE, 1517 4X2, 1517E 4X2, 1519 4X2, 1617, 1622, 1716 ARG., 1717, 1722, 1722 4X2, 1723 4X2, 2422 6X2, 2422E 6X2, 2423 6X2, 2428 6X2, 2428E 6X2, 2429 6X2, 814/815(96/...), B1618 ONIBUS, B1621 ONIBUS, F12000, F12000L, F13000, F14000HD, F19000, F21000, F7000, F8000, FT7000 | SCANIA: 110, 111, F112, F113, K112, K113, L113, LK140, LK141, R112, R113, R142, T112, T113, T142 | VW: 11.130, 11.140, 12.140, 12.140H, 12.140T, 12.170BT, 12.180, 13-190, 13.130, 13.150, 13.170, 13.170E, 13.180, 13.180E, 13.180E CONSTELLATION, 13.190, 14.140, 14.150, 14.170, 14.170BT, 14.180, 14.200, 14.220, 15-190, 15.170, 15.170E, 15.180, 15.180E, 15.180E CONSTELLATION, 15.180EOD, 15.190E, 15.190EOD, 16.170, 16.180 OD, 16.180CO, 16.200, 16.210CO, 16.220, 16.220 LEITO, 16.300, 17.180 CUMMINS EURO 3, 17.180 MWM EURO 3, 17.210, 17.210OD, 17.220, 17.220 CUMMINS EURO 3, 17.220 MWM EURO 3, 17.250E, 17.250E CONSTELLATION, 17.300, 17.310, 18.310, 23.210, 23.220, 23.250E, 23.310, 24.220, 24.220 CUMMINS EURO 3, 24.220 MWM EURO 3, 24.250, 24.250E, 26.220, 26.260, 26.260E, 26.300, 26.310, 31.260, 31.260E, 31.310, 35.300, 35.300 LEITO, 35.300H, 40.300, 40.300 LEITO, 7.100, 7.110, 7.120, 8.100, 8.140

DIVERSOS: TJG607951

NTI: 005849 | VW: TJG607951



TAMPA PROTETORA FREIO MOLA (ALTA)
TAPA PROTECTORA FRENO MUELLE
COVER PROTECTION BRAKE



CAMARA FREIO SPRING BRAKE 24X30
CAMARA DE AIRE SPRING BRAKE
DOUBLE BRAKE CHAMBER 24X30

DIVERSOS: - | FORD: 1215, 1215CUM, 1217 CUMMINS, 1316 CHILE, 1317, 1317 4X2, 1317E 4X2, 1319 4X2, 1415, 1415CUM, 1416 ARG, 1417, 1417 CUMMINS, 1422, 1516 CHILE, 1517 4X2, 1517E 4X2, 1519 4X2, 1617, 1622, 1716 ARG., 1717, 1722, 1722 4X2, 1723 4X2, 2422 6X2, 2422E 6X2, 2423 6X2, 2428 6X2, 2428E 6X2, 2429 6X2, B1618 ONIBUS, B1621 ONIBUS, F12000, F12000L, F13000, F14000HD, F19000, F21000, F7000, F8000, FT7000 | SCANIA: 110, 111, F112, F113, K112, K113, L113, LK140, LK141, R112, R113, R142, T112, T113, T142 | VW: 11.130, 11.140, 12.140, 12.140H, 12.140T, 12.170BT, 12.180, 13-190, 13.130, 13.150, 13.170, 13.170E, 13.180, 13.180E, 13.180E CONSTELLATION, 13.190, 14.140, 14.150, 14.170, 14.170BT, 14.180, 14.200, 14.220, 15-190, 15.170, 15.170E, 15.180, 15.180E, 15.180E CONSTELLATION, 15.180EOD, 15.190, 15.190E, 15.190EOD, 16.170, 16.180 OD, 16.180CO, 16.200, 16.210CO, 16.220, 16.220 LEITO, 16.300, 17.180 CUMMINS EURO 3, 17.180 MWM EURO 3, 17.210, 17.210OD, 17.220, 17.220 CUMMINS EURO 3, 17.220 MWM EURO 3, 17.250E, 17.250E CONSTELLATION, 17.300, 17.310, 18.310, 23.210, 23.220, 23.250E, 23.310, 24.220, 24.220 CUMMINS EURO 3, 24.220 MWM EURO 3, 24.250, 24.250E, 24.250ECONSTELLATION, 26.220, 26.260, 26.260E, 26.300, 26.310, 31.260, 31.260E, 31.310, 35.300, 35.300 LEITO, 35.300H, 40.300, 40.300 LEITO



CONTATOS / CONTACTS

Vendas / Sales: vendas@ntifreios.com.br
Geral / General: cipec@cipec.com.br
Televendas / Telesales: +55 19 3834.9822
Fax Gratuito / Fax Free: 0800.707.9822
www.ntifreios.com.br



ADER

Conversões	N° NTI	Pág.
8017438 P	017031	21
8017438 R	016795	20
891900	006473	20
891900 AA	024106	19
891900 B	023813	19
891900 P	010174	20
891900 PA	023812	20
891900 X	024778	19
962300	006473	20
962300 B	023813	19
962300 P	010174	20
962300 PA	023812	20

BENDIX

Conversões	N° NTI	Pág.
147048302	007467	16
1953052	007456	16
21600	017081	17
30006 V	010044	16
30009 V	016194	16
3011FM72	010756	17
3750009872	010755	17

KNORR

Conversões	N° NTI	Pág.
4B51433	017355	11
4B54273	006909	11
4B54273 X	018989	11
4B57677	017334	12
C65723	022382	11
I82913	007206	13
I82913 P	007491	14
I82914	007206	13
I82914 P	007491	14
I83581	007206	13
I83581 P	007491	14
I85219 P	007491	14
I90229	015596	13
I90229 P	015592	14
II15183	015596	13
II15183 P	015592	14
II33767C	018831	12
II352771 A	013869	12
II352771 E	023896	13
II352771 EP	025874	12
II352771 R	026907	13
K002239001 A	013869	12
K005211	025203	11
K02520002	015686	14
K119163 E	023896	13
K11916360	024700	13
Z004564	022382	11
Z006730	025724	12

MERCEDES

Conversões	N° NTI	Pág.
0004305160	006281	7
0074205318	006281	7
0084201518	006281	7
6944208218	006281	7

NTI

Conversões	N° NTI	Pág.
------------	--------	------

NTI

Conversões	N° NTI	Pág.
003448	000714	16
005327	000714	16
005848	006473	20
006314	001004	18
006315	001004	18
006382	000714	16
006511	004136	8
006540	000714	16
006883	006856	10
006991	006960	10
006992	003591	9
006993	006886	10
006994	006959	7
006997	006995	10
006998	006996	10
009196	007491	14
009557	004138	7
009902	003591	9
009903	006886	10
009904	006959	7
020882	000714	16
021053	006264	18
021054	006264	18
021055	006264	18
021059	007509	21
021061	007509	21
021062	007509	21
021201	005309	18
021202	005309	18
021223	005323	19
021224	005323	19
021225	005323	19
021244	005325	18
021245	005325	18
022568	016612	3
022620	000714	16
022637	005323	19
022656	007206	13
022716	007491	14
022731	017513	21
022749	000714	16
022784	010174	20
022785	010174	20
022786	006473	20
022795	011278	8
022796	018756	9
022874	013219	9
023044	006281	7
023112	012414	7
023127	013869	12
023130	015596	13
023133	015592	14
023212	007491	14
023246	007509	21
023258	006909	11
023259	017334	12
023260	017334	12
023261	017334	12
023262	017355	11
023263	017355	11
023268	017031	21
023269	017031	21
023270	017031	21
023271	016795	20
023272	016795	20
023273	016795	20

NTI

Conversões	N° NTI	Pág.
023276	007467	16
023277	007467	16
023280	010755	17
023281	010755	17
023292	006907	5
023297	010499	6
023298	010499	6
023311	006908	5
023312	006908	5
023320	017461	8
023321	017462	8
023322	012016	9
023323	018473	8
023413	007467	16
023481	017081	17
023492	010755	17
023495	013320	4
023496	013320	4
023510	012015	10
023511	018505	6
023512	010499	6
023617	007467	16
023719	013219	9
023720	013219	9
023721	013219	9
023760	013005	15
023774	010756	17
023775	010756	17
023934	023813	19
023935	023813	19
023936	023812	20
023937	023812	20
024265	024106	19
024371	005850	14
024372	005850	14
025202	025203	11
025851	017513	21
025854	025724	12
028510	000714	16
028511	000714	16
028675	027538	3
028789	027536	3
028790	027541	3
028851	027544	4
028852	027544	4

SCANIA

Conversões	N° NTI	Pág.
10570852	001004	18
10571791	001004	18
1331415	001004	18
1331422	001004	18
1372917	001004	18
1446059	001004	18
1571791	001004	18
1953864	003591	9
1953864 P	006886	10
1953864 PC	013219	9
1953864 PG	006959	7
1953874	006960	10
1953874 P	006995	10
1953874 PG	006996	10
203930	000714	16
246428	001004	18
571706	001004	18

SCANIA

Conversões	N° NTI	Pág.
571791	001004	18

VARGA

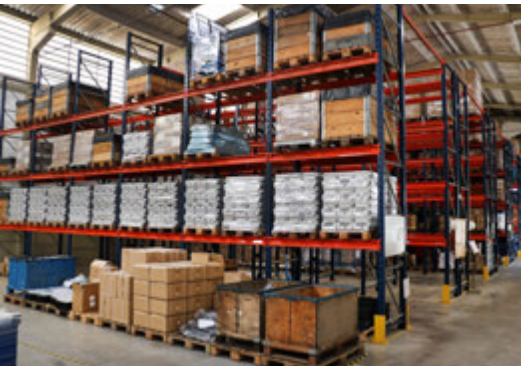
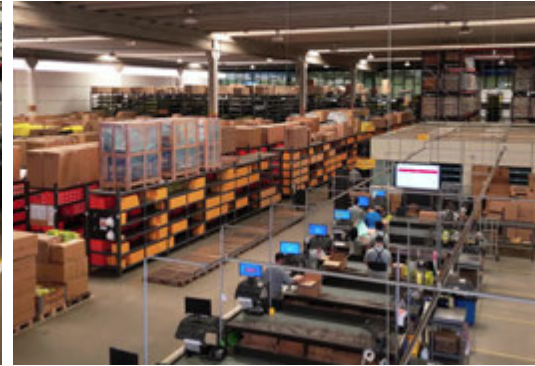
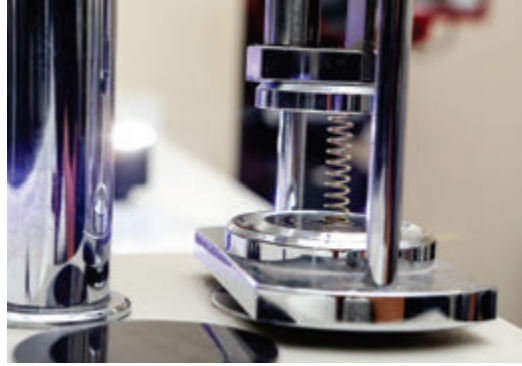
Conversões	N° NTI	Pág.
SRFM00068	013005	15
SRFM0068P	017562	15
T13607965	005321	15

VW

Conversões	N° NTI	Pág.
2RD607149	017513	21
2RD607951	007509	21
2RD607953	005309	18
T06698695	004138	7
T06698695A	005850	14
TAC607597	006264	18
TJG607941	006264	18
TJG607951	005849	21
TJG607959	005323	19
TJG607965	005325	18

WABCO

Conversões	N° NTI	Pág.
30025	010784	7
4213050022	012414	7
4213050162	011572	4
4213051210	016612	3
4213056502	016560	4
4231050012	017461	8
4235050000	027544	4
4254462504	013320	4
8797532604	006907	5
8845001272	014130	6
8845035492	012015	10
8960269104	018505	6
8960528604	010498	6
8960528904	010499	6
8977510104	006908	5
8977532614	006907	5
8993812844	017555	5
9253200012	004136	8
9253200012 P	011278	8
9253200022	006856	10
9253200022 P	018756	9
9253200072	017461	8
9253212880	027540	3
9253214170	027541	3
9253240012	017462	8
9254200042	012016	9
9254300310	027543	4
9254310052	018473	8
9254314500	027538	3
9254320002	018474	9
9254606044	023176	5
9254612912	014509	9
9254646014	023175	5
9254810130	027536	3
9254911410	027542	3
9259076282	011279	6





www.ntifreios.com.br

EMPRESA CERTIFICADA
CERTIFIED COMPANY ISO 9001:2015

