



CATÁLOGO PEÇAS DE REPOSIÇÃO
Spare Parts Catalogue

DAF



www.cipec.com.br

EMPRESA CERTIFICADA
CERTIFIED COMPANY ISO 9001:2015

Empresa

Company | La Empresa

A Cipec iniciou suas atividades em 1983 na cidade de São Caetano como um pequeno distribuidor e fabricante de peças de reposição para caminhões e ônibus. Trabalhando com empenho e seriedade, a Cipec rapidamente ampliou seu leque de produtos de distribuição, alcançando logo em seguida o status de referência nacional no mercado de reposição da linha Scania.

Em 1999, devido ao ritmo crescente dos negócios, a estrutura da Cipec já não comportava a demanda, levando a empresa a transferir suas atividades para uma área de 20.000 m² em Indaiatuba, localizada estrategicamente no interior paulista. Nesse novo local, a empresa investiu fortemente na parte fabril e agregou as linhas Volvo, VW, MWM, Cummins e Iveco.

Com amplo espaço fabril e novos nichos de mercado se abrindo, em 2003 a Cipec inovou mais uma vez, implantando uma completa linha de servos de embreagem, válvulas e reparos de freios para linha pesada. Surgiu então a NTI, uma marca Cipec que em pouco tempo ficaria conhecida no mercado, oferecendo um produto competitivo e altamente confiável.

Atualmente, a Cipec conta com mais de 170 colaboradores e comercializa mais de 22.000 itens a partir de sua unidade fabril localizada em Indaiatuba, ampliando ainda mais sua capacidade de produção e expedindo mais de 30 toneladas de produtos por dia para mais de 50 países em todo o mundo.

Cipec began its activities in 1983 in the city of São Caetano as a small distributor and manufacturer of spare parts for trucks and buses. Working with dedication and seriousness, Cipec quickly expanded its range of distribution products and soon achieved national reference status in the replacement market for the Scania line.

By 1999, its structure could no longer accommodate the growing pace of business, prompting Cipec to transfer its operations to a 20,000 m² area in Indaiatuba, strategically located in the interior of São Paulo. Strong investments were made in the manufacturing sector, and the Volvo, VW, MWM, Cummins, and Iveco lines were added.

With ample manufacturing space and new market niches emerging, Cipec innovated once again in 2003, introducing a complete line of clutch servos, valves, and brake repair kits for heavy-duty applications. Thus, NTI was born, a Cipec brand that quickly became known in the market, offering competitive and highly reliable products.

Today, Cipec employs over 170 employees and sells over 22,000 items from its manufacturing facility located in Indaiatuba, further increasing its production capacity and shipping over 30 tons of products per day to more than 50 countries worldwide.

La Cipec inició sus actividades en 1983 en la ciudad de São Caetano como un pequeño distribuidor y fabricante de repuestos para camiones y autobuses. Trabajando con dedicación y seriedad, Cipec amplió rápidamente su gama de productos de distribución y pronto alcanzó el estatus de referencia nacional en el mercado de repuestos para la línea Scania.

Para 1999, su estructura ya no podía soportar el creciente ritmo de negocios, lo que llevó a Cipec a trasladar sus operaciones a una área de 20,000 m² en Indaiatuba, estratégicamente ubicada en el interior de São Paulo. Se realizaron fuertes inversiones en el sector manufacturero y se añadieron las líneas Volvo, VW, MWM, Cummins y Iveco.

Con un amplio espacio de fabricación y nuevos nichos de mercado emergentes, Cipec innovó una vez más en 2003, introduciendo una línea completa de servos de embrague, válvulas y reparaciones de frenos para aplicaciones de servicio pesado. Así nació NTI, una marca de Cipec que rápidamente se hizo conocida en el mercado, ofreciendo productos competitivos y altamente confiables.

Hoy en día, Cipec emplea a más de 170 trabajadores y vende más de 22,000 artículos desde su planta de fabricación ubicada en Indaiatuba, aumentando aún más su capacidad de producción y enviando más de 30 toneladas de productos al día a más de 50 países en todo el mundo.



DAF	3
ACOPLAMENTO VISCOSO	3
AMORTECEDOR	3
ANEL DE PRESSAO	3
APARA-BARRO	4
BOMBA ARLA	4
BOMBA D'AGUA	4
BOMBA DE OLEO	4
BOMBA MANUAL	5
BUCHAS DIVERSAS	5
CALCO	5
CILINDRO	5
COXIM	6
ESTICADOR	6
FAROL	6
HELICE	7
INTERRUPTOR	7
JUNTA	7
LANTERNA	7
MANCAL DE EMBREAGEM	8
MANGUEIRA	8
MANGUEIRA SILICONE	8
MAQUINA DE VIDRO	8
MOTOR ELETRICO	9
MOTOR LIMP. PARABR.	9
PALHETA / BRACO	9
POLIA	9
REPARO MANGA DE EIXO	10
RESERVATORIO	10
SENSOR	10
SERVO EMBREAGEM	11
TAMPA	11
TERMINAL	11
CONTATOS	12
ÍNDICE POR CÓDIGO	13

DAF	3
VISCOUS COUPLING	3
SHOCK ABSORBER	3
PRESSURE RING	3
FENDER	4
UREA INJECTION FEED MODULE	4
WATER PUMP	4
OIL PUMP	4
HAND PUMP	5
BUSHING ALL TYPE	5
SHIM	5
CYLINDER	5
RUBBER MOUNTING	6
BELT TENSIONER	6
HEAD LAMP	6
FAN	7
SWITCH	7
GASKET	7
LANTERN	7
CLUTCH BEARING	8
HOSE	8
SILICON HOSE	8
WINDOW LIFTER MECHANISM	8
DOOR WINDOW LIFTERS	9
WINDSHIELD WIPER ENGINE	9
BLADE / ARM	9
PULLEY	9
KING PIN REPAIR KIT	10
CONTAINERS	10
SENSOR	10
CLUTCH SERVO	11
COVER	11
TERMINALS	11
CONTACTS	12
INDEX BY CODE	13

1.01 ACOPLAMENTO VISCOSO VISCIOUS COUPLING

1916597 FAN CLUTCH

ACOPL. VISCOSO VENTILADOR DAF

028265
1916597
2293637
1887180
1806712
1732274
1732273



XF105 /

2325564 FAN CLUTCH

ACOPL. VISCOSO VENTILADOR DAF

028280
2325564
2178413
2046259
2006787



XF106 /

1.02 AMORTECEDOR SHOCK ABSORBER

1436055 REAR CABIN SHOCK

AMORT. TRANSVERSAL CABINE DAF

027905
1436055
1303516



XF105 /

1623464 FRONT CABIN SHOCK

AMORT. DIANT. CABINE DAF

027901
1623464
1387327
1337159
1319672



XF105 /

1623465 REAR CABIN SHOCK

AMORT. TRAS. CABINE DAF

027902
1623465
1792422
1387326
1319673
62726
CB0049



XF105 /

1817662 FRONT CABIN SHOCK

AMORT. DIANT. CABINE DAF

027903
1817662



XF105 /

1817663 REAR CABIN SHOCK

AMORT. C/MOLA TRAS. CABINE DAF

027904
1817663



XF105 /

1850676 FRONT CABIN SHOCK

AMORT. DIANT. CABINE DAF

027898
1850676
1936404



XF106 /

1850677 REAR CABIN SHOCK

AMORT. TRAS. CABINE DAF

027805
1850677
1936405



XF106 /

1866162 REAR CABIN SHOCK

AMORT. TRAS. CABINE DAF

027899
1866162
1879836



CF EURO 6 /

1868685 REAR CABIN SHOCK

AMORT. TRAS. CABINE DAF

027900
1868685
1936407



1.03 ANEL DE PRESSAO PRESSURE RING

394809 LOWER PRESSURE RING

ANEL PRESSAO INFERIOR DAF

026535
394809



556110 PRESSURE UPPER RING

ANEL PRESSAO SUPERIOR DAF

026534
556110



1.04 APARA-BARRO

FENDER

1369469 MUD FLAP REAR 685X265

APARA-BARRO TRAS. 685 X 265 DAF XF 105

027004
1369469



1369469 D MUD FLAP FRONT 625X370

APARA-BARRO DIANT. 625 X 370 DAF XF 105

027005
1369469 D



1.05 BOMBA ARLA

UREA INJECTION FEED

1409391 ADBLUE DOUSING PUMP

BOMBA DOSADORA ARLA DAF

028079
1409391
1705244



CF /

1791538 ADBLUE DOSING VALVE

VALV. DOSADORA ARLA DAF

028084
1791538
1674661



XF105 / CF85 /

1791539 ADBLUE DOSING VALVE

VALV. DOSADORA ARLA DAF

028083
1791539



CF / XF /

2871879 UREA INJECTION FEED

BOMBA DOSADORA ARLA 12V DAF

028077
2871879



4377649 ADBLUE DOSING VALVE

VALV. DOSADORA ARLA DAF

028081
4377649
2298365
2238806
2115847



XF / CF /

5273338 ADBLUE DOSING PUMP

BOMBA DOSADORA ARLA CUMMINS

028085



CF

5506956 ADBLUE DOSING PUMP DAF

BOMBA DOSADORA ARLA DAF

028076
5506956
4388105
2208766
2115624



CF NEW (2020/...) / XF NEW (2020/...) /

1.06 BOMBA D'AGUA

WATER PUMP

1828162 WATER PUMP DAF CF85/

B'B D'AGUA DAF CF85/XF95/XF105

027097
1828162
1853301S
1853300S
1853299S
1853298S
1828162R



CF85 / XF 95 / XF105 /

1.07 BOMBA DE OLEO

OIL PUMP

1450902 CABIN TILT PUMP FOR DAF

B'B HIDR. BASCUL. CABINE DAF

028146
1450902
1914281
1382282



/ CF85 / XF105

1450903 HYDRAULIC PUMP

B'B HIDR. BASCUL. CABINE DAF

028145
1450903
1914283
1382283



1.08 BOMBA MANUAL HAND PUMP

248559 MANUAL PUMP

BOMBA MANUAL
025147
248559



1.09 BUCHAS DIVERSAS BUSHING ALL TYPE

1314545 STABILIZER BAR BUSHING

BUCHA BARRA ESTAB. DAF XF105
027406
1314545



1357764 SUSPENSION SPRING

BUCHA FEIXE MOLA DAF
027653
1357764



CF85 / XF105 /

1.10 CALCO SHIM

394508 KING PIN WASHER DAF

CALCO DAF
026536
394508



1.11 CILINDRO CYLINDER

1444742 CABIN TILT CYLINDER

CILINDRO HIDR. BASCUL. CABINE
028252
1444742



CF85 / XF105 /

2046284 CLUTCH RELEASE

CILINDRO ATUADOR DAF/MAN
028140
2046284
24055101
2323315



XF106 /

501211290 GEARBOX CHANGING

CILINDRO COMANDO SHIFT
027312
501211290
1427141
1389650



CF / XF /

6482000216

CILINDRO ATUADOR DAF/MAN
028785



XF106

1.12 COXIM
RUBBER MOUNTING
1806720 REAR UPPER MOUNTING

COXIM TRAS. SUP. MOTOR DAF CF85/95/105

 026941
 1806720
 1806721
 1378589
 1378588

2013651 FRONT ENGINE MOUNTING

COXIM DIANT. MOTOR DAF CF85/95/105

 026942
 2013651
 2009135
 1806735
 1657422
 1638646

221342 RADIATOR MOUNTING DAF

COXIM RADIADOR DAF XF105

 028854
 221342


/ XF105

1.13 ESTICADOR
BELT TENSIONER
1627625 BELT TENSIONER DAF

ESTIC. CORREIA DAF

 026893
 1627625
 2163127
 1695242
 1694953


CF85 / XF105 /

1702525 BELT TENSIONER =

ESTIC. CORREIA MOTOR =ELETRONICO=

 027771
 1702525

1878665

ESTIC. CORREIA NEW VERSION DAF

 026894
 1878665
 1942517
 1918441


CF85 / XF105 /

2234864 BELT TENSIONER DAF

ESTIC. CORREIA ALTERN. DAF

 027786
 2234864
 2019364
 1929107
 1878397


XF106 / CF EURO 6 /

1.14 FAROL
HEAD LAMP
1699300 HEAD LAMP L.H.

FAROL PRINCIPAL L.E. DAF

 028044
 1699300
 1962755
 1743684
 1699313
 1641742
 1399902


XF105 /

1699301 HEAD LAMP R.H.

FAROL PRINCIPAL L.D. DAF

 028043
 1699301
 1743685
 1699315
 1641743
 1620623
 1399903


XF105 /

1725270 FOG LAMP L.H.

FAROL AUX. DAF L.E. DAF

 028048
 1725270


XF105 /

1725271 FOG LAMP R.H.

FAROL AUX. DAF L.D. DAF

 028047
 1725271


XF105 /

1743690 HEAD LAMP L.H.

FAROL PRINCIPAL L.E. DAF

 028046
 1743690

1743691 HEAD LAMP R.H.

FAROL PRINCIPAL L.D. DAF

 028045
 1743691

1835874 HEAD LAMP L.H.DAF

FAROL PRINCIPAL L.E. DAF

 028035
 1835874

1835875 HEAD LAMP R.H. DAF

FAROL PRINCIPAL L.D. DAF

 028036
 1835875

1835886 FOG LAMP L.H.

FAROL AUX. DAF L.E. DAF

 028038
 1835886


XF /

1835887 FOG LAMP R.H. DAF

FAROL AUX. DAF L.D. DAF

 028037
 1835887


1.15 HELICE FAN

1644886 FAN BLADE

HELICE MOTOR DAF

028296
1644886



XF105 /

2299074 FAN BLADE

HELICE MOTOR DAF

028297
2299074
1956601



XF106 /

1.16 INTERRUPTOR SWITCH

2007380 REAR LIGHT SWITCH DAF

INTERRUPTOR LUZ RE DAF

027749
2007380
1449102
1320291
1232372



1.17 JUNTA GASKET

1643512 OIL SUMP GASKET

JUNTA OLEO CARTER DAF

027661
1643512



2138143 EXHAUST MANIFOLD

JUNTA COLETOR ESCAPE DAF

027662
2138143



1.18 LANTERNA LANTERN

1725410 POSITION LAMP DAF

LANT. DELIMITADORA TETO DAF

028049
1725410



1846491 TURN SIGNAL LAMP L.H.

LANT. PISCA L.E. DAF

028042
1846491



XF NEW /

1846492 TURN SIGNAL LAMP R.H.

LANT. PISCA L.D. DAF

028041
1846492



1875577 TAIL LAMP L.H.

LANT. TRAS. L.E. DAF

028040
1875577



XF105 /

1875578 TAIL LAMP R.H. DAF

LANT. TRAS. L.D. DAF

028039
1875578



XF105 /

1.19 MANCAL DE EMBREAGEM

CLUTCH BEARING

1912687 CLUTCH BEARING VM

MANCAL EMBREAGEM VW

024746
1912687
2126596



1.20 MANGUEIRA

HOSE

1376266 RADIATOR HOSE DAF

MANGUEIRA RADIADOR DAF

027252
1376266



1670856 RADIATOR UPPER HOSE

MANGUEIRA SUP. RADIADOR DAF

027253
1670856



XF105 /

1.21 MANGUEIRA SILICONE

SILICON HOSE

1378391 INTERCOOLER HOSE DAF

MANGUEIRA INTERCOOLER DAF

027255
1378391



1600366 INTERCOOLER SILICON RED

MANGUEIRA INTERC. CF85/XF95/105 DAF

026895
1600366



1600366 P INTERCOOLER SILICON

MANGUEIRA INTERC. CF85/XF95/105 DAF

027081
1600366 P



1606273 INTERCOOLER HOSE DAF

MANGUEIRA ENTRADA AR TURBINA DAF

027659
1606273
1675763



XF105 /

1633704 RETARDER HOSE DAF

MANGUEIRA RETARDER DAF

027632
1633704
1731784
1650940
1440841
1368798



1645506 RADISTOR HOSE AIR COND.

MANGUEIRA RADIADOR AR COND. DAF

027254
1645506



1676184 RETARDER HOSE DAF

MANGUEIRA RETARDER DAF

027633
1676184
1731785
1633705
1439581
1325086



1813209 INTERCOOLER HOSE DAF

MANGUEIRA INTERCOOLER DAF

027658
1813209



1.22 MAQUINA DE VIDRO

WINDOW LIFTER MECHANISM

1881914 WINDOW REGULATOR W/

MAQUINA VIDRO ELET. C/MOTOR L.E. DAF

027608
1881914



1881915 WINDOW REGULATOR W/

MAQUINA VIDRO ELET. C/MOTOR L.D. DAF

027609
1881915



1.23 MOTOR ELETRICO DOOR WINDOW LIFTERS

1893637 ELECTRIC CENTRAL

MOTOR TRAVA ELETRICA PORTA DAF

027600
1893637
1339022



1.24 MOTOR LIMP. PARABR. WINDSHIELD WIPER ENGINE

1254891 WINDSHIELD WASHER

MOTOR LIMPADOR PARABRISA DAF

027577
1254891
1209106
386253
97938



1409966 WINDSHIELD WASHER

MOTOR LIMPADOR PARABRISA DAF

027580
1409966
1706503



1.25 PALHETA / BRACO BLADE / ARM

1288698 WIPER BLADE DAF

PALHETA LIMPADOR PARABRISA DAF

027585
1288698
1868249
1814770
1542865
1526411
1238777



1401104 WINDSHIELD WIPER ARM

BRACO LIMPADOR PARABRISA L.E. DAF

027590
1401104



1401105 WINDSHIELD WIPER ARM

BRACO LIMPADOR PARABRISA L.D. DAF

027591
1401105



1517868 WIPER BLADE DAF

PALHETA LIMPADOR PARABRISA DAF

027582
1517868
1542884
1542871



1542873 WINDSHIELD WIPER BLADE

PALHETA LIMPADOR PARABRISA DAF

027568
1542873
911212



2206303 WINDSHIELD WIPER ARM

BRACO LIMPADOR PARABRISA DAF

027589
2206303
2206295
1814771



XF106 /

1.26 POLIA PULLEY

2163128 TENSIONER PULLEY FLAT

POLIA ESTIC. CORREIA DAF

027780
2163128
1699240
1687821
1638696
1458924
1458294



XF105 /

0915431 FAN BELT PULLEY

POLIA ESTIC. CORREIA TECTOR/VERTIS/

027781
1702526
1399613
915431



1.27 REPARO MANGA DE EIXO KING PIN REPAIR KIT

681706 KING PIN REP.KIT FOR DAF

REPARO MANGA EIXO DAF

026544
681706



XF TODOS FREIO A TAMBOR / CF TODOS
FREIO A TAMBOR /

1.28 RESERVATORIO CONTAINERS

1626237 EXPANSION TANK WITH

RESERV. RADIADOR C/TAMPA DAF

027420
1626237



XF105 /

1871493 EXPANSION TANK WITH

RESERV. RADIADOR C/TAMPA S/SENSOR DAF

027410
1871493
1660859
1371329



CF85 /

1960437 EXPANSION TANK WITH

RESERV. RADIADOR C/TAMPA S/SENSOR DAF

027409
1960437
1939412
1939411
1909460
1722033



CF NEW (2020/...) / XF NEW (2020/...)

1.29 SENSOR SENSOR

1624783 WATER RESERVOIR LEVEL

SENSOR NIVEL RESERV. AGUA DAF

027757
1624783
1740758
1371332



1721270 NOX SENSOR ARLA

SENSOR NOX ARLA

028068
1721270
1705572
1705520
1703687
1702178



CF85 /

1844101 FUEL TEMPERATURE

SENSOR TEMPERATURA COMBUST. DAF

027753
1844101



2011648 SENSOR NOX DAF

SENSOR NOX DAF

027667
2011648
1836059
1793378
1744683
TK2269000



CF85 / XF105 /

2020259 AIR PRESSURE SENSOR

SENSOR PRESSAO AR DAF

026057
2020259



2045580 WATER PUMP ROTATION

SENSOR ROTACAO B/B'AGUA DAF

027760
2045580
1948946



XF106 / CF EURO 6 /

2127356 OIL PRESSURE SENSOR

SENSOR PRESSAO OLEO

027867
2127356
2041678
1826281
1803301



CF85 / XF105 /

2132521 FUEL PRESSURE SENSOR

SENSOR PRESSAO COMBUSTIVEL

027866
2132521
2041676
1826277
1785702



XF105 / CF85 /

2139930 NOX SENSOR ARLA

SENSOR NOX ARLA

028071
2139930
4326769
1953530
1928760
5WK97348A



XF NEW (2021/...)

2293965 SENSOR NOX DAF

SENSOR NOX DAF

027669
2293965
1936258



XF NEW (2021/...)

2348133 SENSOR NOX DAF

SENSOR NOX DAF

027668
2348133
2011649
1836060
1793379
1697586
TK2269001



CF85 / XF105 /

2429860 NOX SENSOR ARLA

SENSOR NOX ARLA

028070
2429860
5301420
2236408
2006245
1973527



XF106 / CF EURO 6 /

1.29 SENSOR

SENSOR

5260246 FUEL PRESSURE SENSOR

SENSOR PRESSAO COMBUSTIVEL CUMMINS
028101



CF / XF

0910388 FUEL PRESSURE SENSOR

SENSOR PRESSAO COMBUSTIVEL DAF
028102
08099063
910388



CF / XF /

1.30 SERVO EMBREAGEM

CLUTCH SERVO

1443521 CLUTCH SERVO 80MM DAF/

SERVO EMBR. 80MM DAF/RENAULT
026401
1443521



CF75 /

1447248 CLUTCH SERVO FOR DAF

SERVO EMBR. DAF KNORR
027282
1447248



1504843 CLUTCH SERVO B7R/B10R/

SERVO EMBR. DAF =INJETADO=
027281
1504843



1506462 CLUTCH SERVO DAF

SERVO EMBR. DAF/MAN
026402
1506462



628277AM CLUTCH SERVO DAF/IVECO/

SERVO EMBR. 80MM DAF/RENAULT
026022



CF75

9700512170 CLUTCH SERVO DAF/MAN

SERVO EMBR. DAF/MAN
026026



XF

1.31 TAMPA

COVER

1399820 EXPANSION RESERVOIR

TAMPA RESERV. EXP. RADIADOR DAF
028908
1399820



1693114 BATTERY BOX COVER

TAMPA CX. BATERIA C/PRESILHA DAF XF
027464
1693114
1667885



2115958 EXPANSION TANK CAP DAF

TAMPA RESERV. RADIADOR DAF CF/XF 2020
027417
2115958
1896859



CF NEW (2020/...) / XF NEW (2020/...)

1.32 TERMINAL

TERMINALS

1149907 TIE ROD END RIGHT

TERMINAL DIRECAO L.D. DAF
027698
1149907
9510212
1618048
1603789
1257890
1152350

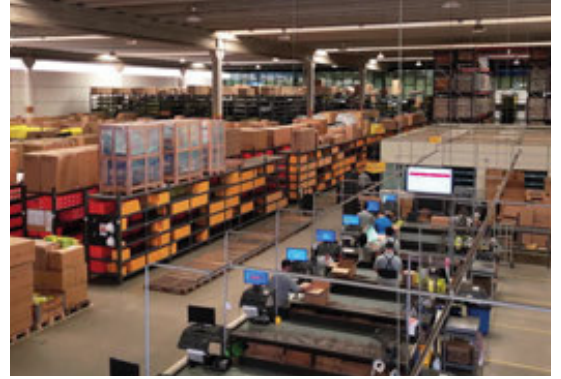
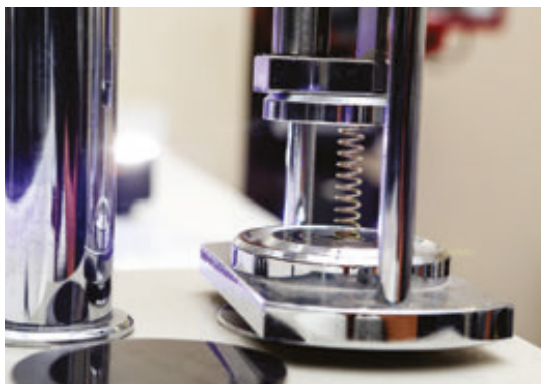


1228115 TIE ROD END LH DAF

TERMINAL DIRECAO L.E. DAF
027697
1228115
9510208
1611088
1329134
1142021
696225



Vendas / Sales: vendas@cipec.com.br
Geral / General: cipec@cipec.com.br
Televendas / Phone: +55 19 3834-9822
Fax / Fax: 0800.707.9822
www.cipec.com.br



Conheça toda nossa linha de produtos:

- ✓ **Scania**
- ✓ **Volvo**
- ✓ **Iveco**
- ✓ **VW**
- ✓ **Mercedes**
- ✓ **Freios**
- ✓ **Daf**
- ✓ **Ford**



www.cipec.com.br

**EMPRESA CERTIFICADA
CERTIFIED COMPANY ISO 9001:2015**

