

CATÁLOGO PEÇAS DE REPOSIÇÃO

Spare Parts Catalogue

**COMPONENTES
ELÉTRICOS**

*Electrical
Components*

www.cipec.com.br

EMPRESA CERTIFICADA
CERTIFIED COMPANY ISO 9001:2015

Empresa

Company | La Empresa

A Cipec iniciou suas atividades em 1983 na cidade de São Caetano como um pequeno distribuidor e fabricante de peças de reposição para caminhões e ônibus. Trabalhando com empenho e seriedade, a Cipec rapidamente ampliou seu leque de produtos de distribuição, alcançando logo em seguida o status de referência nacional no mercado de reposição da linha Scania.

Em 1999, devido ao ritmo crescente dos negócios, a estrutura da Cipec já não comportava a demanda, levando a empresa a transferir suas atividades para uma área de 20.000 m² em Indaiatuba, localizada estrategicamente no interior paulista. Nesse novo local, a empresa investiu fortemente na parte fabril e agregou as linhas Volvo, VW, MWM, Cummins e Iveco.

Com amplo espaço fabril e novos nichos de mercado se abrindo, em 2003 a Cipec inovou mais uma vez, implantando uma completa linha de servos de embreagem, válvulas e reparos de freios para linha pesada. Surgiu então a NTI, uma marca Cipec que em pouco tempo ficaria conhecida no mercado, oferecendo um produto competitivo e altamente confiável.

Atualmente, a Cipec conta com mais de 170 colaboradores e comercializa mais de 22.000 itens a partir de sua unidade fabril localizada em Indaiatuba, ampliando ainda mais sua capacidade de produção e expedindo mais de 30 toneladas de produtos por dia para mais de 50 países em todo o mundo.

Cipec began its activities in 1983 in the city of São Caetano as a small distributor and manufacturer of spare parts for trucks and buses. Working with dedication and seriousness, Cipec quickly expanded its range of distribution products and soon achieved national reference status in the replacement market for the Scania line.

By 1999, its structure could no longer accommodate the growing pace of business, prompting Cipec to transfer its operations to a 20,000 m² area in Indaiatuba, strategically located in the interior of São Paulo. Strong investments were made in the manufacturing sector, and the Volvo, VW, MWM, Cummins, and Iveco lines were added.

With ample manufacturing space and new market niches emerging, Cipec innovated once again in 2003, introducing a complete line of clutch servos, valves, and brake repair kits for heavy-duty applications. Thus, NTI was born, a Cipec brand that quickly became known in the market, offering competitive and highly reliable products.

Today, Cipec employs over 170 employees and sells over 22,000 items from its manufacturing facility located in Indaiatuba, further increasing its production capacity and shipping over 30 tons of products per day to more than 50 countries worldwide.

La Cipec inició sus actividades en 1983 en la ciudad de São Caetano como un pequeño distribuidor y fabricante de repuestos para camiones y autobuses. Trabajando con dedicación y seriedad, Cipec amplió rápidamente su gama de productos de distribución y pronto alcanzó el estatus de referencia nacional en el mercado de repuestos para la línea Scania.

Para 1999, su estructura ya no podía soportar el creciente ritmo de negocios, lo que llevó a Cipec a trasladar sus operaciones a una área de 20,000 m² en Indaiatuba, estratégicamente ubicada en el interior de São Paulo. Se realizaron fuertes inversiones en el sector manufacturero y se añadieron las líneas Volvo, VW, MWM, Cummins y Iveco.

Con un amplio espacio de fabricación y nuevos nichos de mercado emergentes, Cipec innovó una vez más en 2003, introduciendo una línea completa de servos de embrague, válvulas y reparaciones de frenos para aplicaciones de servicio pesado. Así nació NTI, una marca de Cipec que rápidamente se hizo conocida en el mercado, ofreciendo productos competitivos y altamente confiables.

Hoy en día, Cipec emplea a más de 170 trabajadores y vende más de 22,000 artículos desde su planta de fabricación ubicada en Indaiatuba, aumentando aún más su capacidad de producción y enviando más de 30 toneladas de productos al día a más de 50 países en todo el mundo.



SCANIA	3
ABRACADEIRA	3
CAIXA DE BATERIA	3
CHAVE COMUTADORA/MIOLO/CONT.	3
CHICOTE	3
ESTICADOR	4
FAROL	4
INTERRUPTOR	5
LANTERNA	5
LENTE	6
MANGUEIRA	6
MOTOR ELETRICO	7
PALHETA / BRACO	7
POLIA	7
PRESILHA	7
RELE	8
SENSOR	8
SUPORTE	8
TAMPA	8
TRAVA	9
VOLVO	10
BUCHAS DIVERSAS	10
CABO	10
CAPA	10
CHAVE	10
CHAVE COMUTADORA/MIOLO/CONT.	11
ESTICADOR	11
FAROL	11
INTERRUPTOR	12
LANTERNA	13
LENTE	14
MAQUINA DE VIDRO	14
MOTOR ELETRICO	14
RELE	15
SENSOR	15
VW	16
BUCHAS DIVERSAS	16
CHAVE COMUTADORA/MIOLO/CONT.	16
ESTICADOR	16
INTERRUPTOR	16
LANTERNA	17
RELE	17
SENSOR	17
FORD	18
INTERRUPTOR	18
LANTERNA	18
IVECO	19
FAROL	19
LANTERNA	19

LENTE	19
MERCEDES	20
FAROL	20
LANTERNA	20
MOLDURA	20
POLIA	20
SENSOR	21
DAF	22
FAROL	22
SENSOR	22
CONTATOS	23
ÍNDICE POR CÓDIGO	24

SCANIA 3

CLAMP	3
BATTERY BOXE	3
SWITCH	3
WIRING HARNESS	3
BELT TENSIONER	4
HEAD LAMP	4
SWITCH	5
LANTERN	5
LEN	6
HOSE	6
DOOR WINDOW LIFTERS	7
BLADE / ARM	7
PULLEY	7
CLAMP	7
RELAYS	8
SENSOR	8
BRACKET	8
COVER	8
LOCKS	9

VOLVO 10

BUSHING ALL TYPE	10
CABLE	10
COVER	10
SWITCH	10
SWITCH	11
BELT TENSIONER	11
HEAD LAMP	11
SWITCH	12
LANTERN	13
LEN	14
WINDOW LIFTER MECHANISM	14
DOOR WINDOW LIFTERS	14
RELAYS	15
SENSOR	15

VW 16

BUSHING ALL TYPE	16
SWITCH	16
BELT TENSIONER	16
SWITCH	16
LANTERN	17
RELAYS	17
SENSOR	17

FORD 18

SWITCH	18
LANTERN	18

IVECO 19

HEAD LAMP	19
LANTERN	19

LEN	19
-----	----

MERCEDES 20

HEAD LAMP	20
LANTERN	20
FRAME	20
PULLEY	20
SENSOR	21

DAF 22

HEAD LAMP	22
SENSOR	22

CONTACTS 23

INDEX BY CODE 24

1.01 ABRACADEIRA CLAMP

1371444 CLAMP FOR ELECTRIC

ABRAC. CABO ELETRICO 94/114/24/64

007998
1371444



P94 / 114 / 124 / 164 /

1.02 CAIXA DE BATERIA BATTERY BOXE

1362693 BATTERY BOX COVER 94/

TAMPA CX. BATERIA 94/114/24/64

006841
1362693



114 / 124 / 164 / 94 /

1.03 CHAVE COMUTADORA/MIOLO/ SWITCH

1327015 ALERT INDICATOR SWITCH

INTERRUPTOR PISCA ALERTA 94/114/24/64

007039
1327015



114 / 124 / 164 / K124 / 94 / F94 / K94 /

1402448 TURN SIGNAL SWITCH

CHAVE SETA 94/114/24/64

009317
1402448
1373189
1353706



114 / 124 / 164 / K124 / 94 / F94 / K94 /

1425019 IGNITION CHANGE-OVER

COMUTADOR IGNICAO S.4

011005
1425019
1318527



114 / 124 / 164 / K124 / 94 / K94 /

203473 JUNCTION BOX 111

CHAVE CONTATO 111

000710
203473



L75 / L76 / 110 / 111 / LK140 / LK141 /

347893 SWITCH INDICATOR 112

CHAVE SETA 112

001576
347893
1358174
367326
1817910
301491



T112 / R112 / K112 / F112 / T142 / R142 /

360248 TURN SIGNAL SWITCH

CHAVE SETA C/RETORNO AUTOMATICO P93/

009649
360248
1358175



T113 / R113 / K113 / R143 / L113 / P93 /

1.04 CHICOTE WIRING HARNESS

389202 SENSOR WIRING HARNESS

CHICOTE SENSOR P/ OLEO

001641
389202



T112 / T113 / F113 / R113 / K112 / R112 / R142 /
T142 / F112 / K113 / R143 / L113 / 114 / 124 / 164 /

1.05 ESTICADOR
BELT TENSIONER

290151 ALTERNATOR BELT

ESTIC. CORREIA ALTERN. 112

001239
290151



T112 / R112 / T142 / R142 /

1.06 FAROL
HEAD LAMP

1446354 FOG LAMP R.H.

FAROL AUXILIAR L.D. S-5

015529
1446354
2248114
1852570
1511540
1446554



P.G.R. / P.G.R.S. /

1446356 FOG LAMP R.H.

FAROL AUX. NEBLINA L.D. S-5

015531
1446356
1852578
1511543
2080689
1852573



P.G.R. / P.G.R.S. /

1732509 HEADLIGHT L.H.

FAROL PRINCIPAL L.E. S.4/P.G.R.T.

014604
1732509
1431257
1407940
1337249
1467000
1446587



114 / 124 / 164 / P.G.R. / 94 /

1732510 HEADLIGHT R.H.

FAROL PRINCIPAL L.D. S.4/P.G.R.T.

014605
1732510
1431256
1407941
1337250
1467003
1446588



114 / 124 / 164 / P.G.R. / 94 /

1892324 HEADLIGHT R.H.

FAROL PRINCIPAL L.D. PGR

016209
1892324
2442631
1900351
1760554
1730958



P.G.R. / P.G.R.S. /

2241828 HEADLIGHT R.H. FH12/FM12

FAROL COMPLETO L.E. P.G.R.T.

019341
2241828
2416136
2000049



P.G.R. /

2241829 HEADLIGHT R.H. FH12/FM12

FAROL COMPLETO L.D. P.G.R.T.

019340
2241829
2416137
2000057



P.G.R. /

2535366 HIGH ROOF AUXILIARY

FAROL AUX. TETO ALTO L.E. N.T.G.

028031
2535366



2535367 HIGH ROOF AUXILIARY

FAROL AUX. TETO ALTO L.D. N.T.G.

028030
2535367



2552708 CAB ROOF DRIVING LIGHT L.

FAROL AUX. TETO BAIXO L.E. N.T.G.

028029
2552708



L.P.G.R.S. (NTG) /

2552709 CAB ROOF DRIVING LIGHT

FAROL AUX. TETO BAIXO L.D. N.T.G.

028028
2552709



L.P.G.R.S. (NTG) /

2552715 FRONT FOG LIGHT R.H. N.T.

FAROL AUX. NEBLINA L.D. N.T.G.

028020
2552715



2655840 HEAD LAMP L.H.

FAROL PRINCIPAL L.E. N.T.G.

028017
2655840
2674382
2379889



L.P.G.R.S. (NTG) /

2655841 HEAD LAMP R.H.

FAROL PRINCIPAL L.D. N.T.G.

028016
2655841
2674383
2379893



L.P.G.R.S. (NTG) /

2659163 AUXILIARY DRIVING LIGHT

FAROL AUX. LUZ ALTA L.E. N.T.G.

028025
2659163
2552711



L.P.G.R.S. (NTG) /

2659164 AUXILIARY DRIVING LIGHT

FAROL AUX. LUZ ALTA L.D. N.T.G.

028024
2659164
2552712



L.P.G.R.S. (NTG) /

1.06 FAROL HEAD LAMP

2659166 UPPER GRILLE AUXILIARY
FAROL AUX. GRADE SUP. L.E. N.T.G.
028033
2659166
2305517

2659167 UPPER GRILLE AUXILIARY
FAROL AUX. GRADE SUP. L.D. N.T.G.
028032
2659167
2305518

537036 HEADLIGHT MOULDING
MOLDURA FAROL 537034 112/3
013146
537036

T113 / R113 / R143 / P93 /

1.07 INTERRUPTOR SWITCH

1730878 PRESSURE SWITCH = BUS
INTERRUPTOR PRESSAO =ONIBUS S.4=
016092
1730878

285905 AIR PRESSURE SWITCH W/
INTERRUPTOR PRESSAO AR C/PINO
015335
285905

T112 / T113 / F113 / R113 / K112 / R112 / R142 /
T142 / F112 / K113 / R143 / P93 /

290950 ALERT INDICATOR SWITCH
INTER. PISCA-ALERTA 113
001246
290950
1363131
1328177

/ T112 / T113 / R113 / R143 / P93 / K112 / R112 /
R142 / T142

290951 HEAD LAMP SWITCH 112
INTERRUPTOR FAROL 112
001247
290951

T112 / T113 / F113 / R113 / K112 / R112 / R142 /
T142 / F112 / K113 / R143 / L113 / P93 /

290955 ELETIC WINDOW SWITCH
INTER. VIDRO ELETRICO 112
001249
290955

T112 / R112 / T142 / R142 / R113 / T113 / R143 /

353621 SWITCH HEADLIGHT AUX.
INTER. FAROL AUX. E ESPELHO TERM.113
003492
353621
1488066

P93 / R113 / T113 / R143 / 94 / 114 / 124 / 164 /

353628 ELET. WINDOW SWITCH
INTERRUPTOR VIDRO ELETRICO 113
003493
353628

113 / 94 / 114 / 124 / 164 / R113 / T113 / R143 /

365015 LIGHT CONTACT
INTERRUPTOR REOSTATO 94/114/24/64
009316
365015

371910 STARTER SWITCH S.4
INTERRUPTOR DE IGNICAO S.4
006569
371910
276454

T113 / F113 / R113 / K113 / R143 / L113 /

397946 BRAKE LIGHT SWITCH 112
INTERRUPTOR PRESSAO AR 112 =C/
001211
397946
368851

T112 / T113 / F113 / R113 / K112 / R112 / R142 /
T142 / F112 / K113 / R143 / P93 /

532296 BRAKE LIGHT PRESSURE
INTERRUPTOR PRESSAO LUZ FREIO 111
001830
532296

1.08 LANTERNA LANTERN

1508180 REAR LANTERN L.H.
LANTERNA TRAS. C/VIGIA L.E.(APOS 2005) S.
011825
1508180
2129985
2021579
1906552
1756574

114 / 124 / 164 / 94 /

1508181 REAR TAIL LIGHT R.H.
LANTERNA TRAS. S/VIGIA L.D. (APOS 2005) S.
011826
1508181
2129987
2021575
1906549
1756571

114 / 124 / 164 / 94 /

1747981 CORNER LAMP
LANTERNA PISCA DIANT. P2570/R420
016207
1747981

P.G.R. /

1756751 REAR TAIL LIGHT R.H.
LANTERNA TRAS. S/VIGIA C/SOQUETE L.D.S.
012931
1756751

114 / 124 / 164 / P.G.R. / 94 /

1.08 LANTERNA

LANTERN

1756754 REAR LANTERN L.H.

LANTERNA TRAS. C/VIGIA C/SOQUETE L.E.S.

012930
1756754



114 / 124 / 164 / P.G.R. / 94 /

1798980 LIGHT

LANTERNA TAPA SOL C/LED'S BRANCO E

013810
1798980
1910437



114 / 124 / 164 / P.G.R. / 94 /

2241544 CORNER LAMP

LANTERNA DIANT. LD./L.E. P.G.R.T.

019339
2241544
2442637
1949900



P.G.R. /

2380954 TAIL LIGHT R.H W/O

LANTERNA TRAS. S/VIGIA L.D. L.P.G.R.S.

027307
2380954
2241859
1905043



2380955 TAIL LAMP L.H WITH

LANTERNA TRAS. C/ VIGIA L.E. L.P.G.R.S.

027306
2380955
2241860
1905044



1.09 LENTE

LEN

1446583 MAIN LIGHT LENS P.G.R.T.

LENTE FAROL PRINCIPAL L.E. S.4/P.G.R.T.

019661
1446583
1349779



114 / 124 / 164 / P.G.R. / 94 / P.G.R.S. /

1446584 MAIN LIGHT LENS P.G.R.T.

LENTE FAROL PRINCIPAL L.D. S.4/P.G.R.T.

019660
1446584
1349780



1549814 HEAD LAMP LENS LK P.G.R.

LENTE FAROL L.E. P.G.R.

025817
1549814
2399976



1549815 HEAD LAMP LENS RH P.G.R.

LENTE FAROL L.D. P.G.R.

025816
1549815
2399977



2027555 REAR TAIL LAMP LENS R.H.

LENTE LANTERNA TRAS. L.D. P.G.R.

028022
2027555



2027556 REAR TAIL LAMP LENS L.H.

LENTE LANTERNA TRAS. L.E. P.G.R.

028023
2027556
2380957



1.10 MANGUEIRA

HOSE

1386087 RADIATOR RESERVOIR

MANG. MOLDADA RESERV. RADIADOR 114

005976
1386087



114 / 124 / 164 /

1.11 MOTOR ELETRICO DOOR WINDOW LIFTERS

1442292 DOOR WINDOW LIFTER

MOTOR ELETRICO VIDRO PORTA L.E. S.4/P.G.

010297
1442292
1366761
2572352
2303350
560097



114 / 124 / 164 / P.G.R. / 94 /

1442293 DOOR WINDOW LIFTER

MOTOR ELETRICO VIDRO PORTA L.D. S.4/P.G.

010298
1442293
1366762
2572363
2303355
560098



114 / 124 / 164 / P.G.R. / 94 /

1889273 POWER WINDOW ENG. W/

MOTOR ELETRICO C/CHICOTE C/5 PLUGS S.

025036
1889273



1940919 POWER WINDOW ENG W/

MOTOR ELETR. PORTA C/CHICOTE 4 PLUGS

025042
1940919



2076264 DOOR WINDOW LIFT MOTOR

MOTOR ELETRICO VIDRO PORTA L.E. N.T.G.

027610
2076264



2076265 DOOR WINDOW LIFT MOTOR

MOTOR ELETRICO VIDRO PORTA L.D. N.T.G.

027611
2076265



2076266 DOOR WINDOW LIFT MOTOR

MOTOR ELETRICO VIDRO PORTA L.E. N.T.G.

027613
2076266



2076267 DOOR WINDOW LIFT MOTOR

MOTOR ELETRICO VIDRO PORTA L.D. N.T.G.

027612
2076267



1.12 PALHETA / BRACO BLADE / ARM

1380036 WINDSHIELD WIPER BLADE

PALHETA LIMPADOR PARABRISA 114

004093
1380036
2848235
2657197
1849341
1541106
1358287



114 / 124 / 164 / 94 /

1.13 POLIA PULLEY

1347401 ALTERNATOR PULLEY

POLIA ALTERNADOR 114/24

010193
1347401



114 / 124 / K124 / K94 / K114 /

333653 ALTERNATOR PULLEY 113/

POLIA ALTERN. 2 CANAIS 113/4/P94

003347
333653



P93 / F113 / R113 / T113 /

1.14 PRESILHA CLAMP

1357522 HEADLIGHT CLAMP

PRESILHA FAROL S.4

013907
1357522



114 / 124 / 164 / P.G.R. / 94 /

293091 CHASSI CLAMP

PRESILHA FIACAO DO CHASSI

001264
293091



T112 / R112 / K112 / F112 / T142 / R142 / P93 /
F113 / K113 / R113 / T113 / R143 / L113 / 94 / 114

293092 CHASSI CLAMP

PRESILHA FIACAO DO CHASSI

001265
293092



T112 / T113 / 114 / F113 / K113 / R113 / R143 /
P93 / K112 / R112 / R142 / P.G.R. / K124 / 94 /

331946 CHASSI CLAMP

PRESILHA FIACAO CHASSI

002708
331946



T112 / T113 / 114 / F113 / K113 / R113 / R143 /
P93 / K112 / R112 / R142 / K124 / 94 / L113 /

1.15 RELE RELAYS

1387022 GEAR BOX EXCHANGE

RELE TROCA DE CAIXA 94

006238
1543806
1475750
1387022
1347277



/ 114 / 124 / 164 / 94 / K94 / K113

1401789 RELAY 94/114/24/64

RELE PISCA 94/114/24/64

007686
1401789
2159998
1328548



114 / 124 / 164 / K124 / 94 / F94 / K94 / K114 /

233200 RELAY

RELE ELETRONICO PISCA

000880
233200



110 / 111 / LK140 / LK141 /

334470 RELAY K/R/F/L 113 R 143

RELE PISCA ALERTA K/R/F/L 113 R 143 24V

001556
334470
20223196
1334196
365559
289929
D9436



T112 / R112 / F112 / K112 / R142 / T142 / P93 /
F113 / K113 / R113 / T113 // R143 / L113

1.16 SENSOR SENSOR

1112819 TEMPERATURE SENSOR S.

SENSOR TEMPERATURA S.4

018572
1112819



SERIE4 /

1374052 WATER LEVEL SENSOR

SENSOR NIVEL D'AGUA S.4/P.G.R.T.

018511
1374052



94 / 114 / 124 / 164 / P.G.R. /

1491408 ENGINE TEMPERATURE

SENSOR TEMPERATURA MOTOR S.4

016086
1491408
1348984
1397851



114 / 124 / 164 / K124 / 94 / K94 / K114 /

1777165 AIR CON. SENSOR P.G.R.

SENSOR ELETRON. AR COND. P.G.R.

025602
1777165



1862890 COMMAND UNIT SENSOR

SENSOR COMBINADO UNID. COMANDO S4/PGR

016085
1862890
2131817
1862797
1862787
1471740
535520



114 / 124 / 164 / P.G.R. / K124 / 94 / K94 / K114 /

1.17 SUPORTE BRACKET

1308161 BRACKET (FROM M.3092621)

SUPORTE ALTERN. (A PARTIR M.3092621)

002502
1308161
1341749



T113 / R113 /

1358833 HEADLIGHT BRACKET

SUPORTE FAROL 94/114/24/64

007528
1358833
1520919



/ 94 / 114 / 124 / 164

365372 BRACKET T113

SUPORTE ALTERN. (MOD.NOVO) T113

002919
365372



T112 / T113 / R113 / R112 /

1.18 TAMPA COVER

279732 COVER

TAMPA CX. LIGACAO 94/114/24/64

008000
279732



114 / 94 / 124 / 164 / P.G.R. /

1.19 TRAVA
LOCKS

289563 PHAROL FIX

TRAVA PINO ESFERICO FAROL P93/R113/143

009034

289563



/ R113 / R143 / P93 / R112 / R142

2.01 BUCHAS DIVERSAS

BUSHING ALL TYPE

946176 V BELT STRETCHER

BUCHA ESTICADOR CORREIA

006227
946176 V



/ NL10 / NL12 / B58 / N10 / N12

2.02 CABO

CABLE

20382517 V ADAPTOR CABLE N10/12/

CABO ADAPTADOR N10/12/NH10/12

025796
20382517 V



2.03 CAPA

COVER

21448885 V SIDE LAMP COVER L.H. FH/

CAPA INT. PISCA L.E. FH/FM

028011
21448885 V



21478751 V TURN SIGNAL LAMP LENS

CAPA INT. PISCA L.D. FH/FM

028010
21478751 V



FM4 / FH4 / FMX /

2.04 CHAVE

SWITCH

21243844 V SWITCH

CHAVE GERAL FH12/13/16/NH12/FM12/B9/10/12

018182
21199003 V
20514309 V
21243844 V



2.05 CHAVE COMUTADORA/MIOLO/ SWITCH

20752914 V COMPLETE POWER

INTER. CPL. VIDRO ELET. FH/FM/NH

019720
20752914 V
22566506 V
20455313 V
20452013 V
21543893 V
21354597 V



FH16 / FH12 / FH / FM / FM12 / FM9 / NH12 /

20752918 V CENTRAL ELECTRIC

INTER. CPL. VIDRO ELET. FM9/12/FH12/16/

017702
20752918 V
22566510 V
20568857 V
20455317 V
20452017 V
21543897 V



20752919 V CENTRAL ELECTRIC

INTER. CPL. VIDRO ELET. FM9/12/FH12/16/

017703
20752919 V
22566514 V
21543901 V
21354613 V
21277630 V
20953593 V



2.06 ESTICADOR BELT TENSIONER

3154315 V BELT TENSIONER FH/FM

ESTIC. CORREIA ALTERN. FH/NH/FM/D12A

010004
3154315 V
8149798 V
1664973 V



NH12 / B12 / FL10 / FH16 / FH12J / FM7 / FL12 / B12R /

2.07 FAROL HEAD LAMP

20360898 V HEADLIGHT L.H. FH12/FM12

FAROL COMPLETO L.E. FH12/FM12

015267
20360898 V
20713720 V



FH16 / FH12 / FM12 / FM9 /

20452848 V LIGHTHOUSE FRAME R.H.

ARO FAROL L.D. FH A PARTIR 2005

013172
20452848 V



20818763 V HEAD LAMP LH VM

FAROL PRINCIPAL L.E. VM

025538
20818763 V
20818770 V
20818768 V
20818765 V



20818771 V HEAD LAMP RH VM

FAROL PRINCIPAL L.D. VM

025537
20818771 V
20818781 V
20818779 V
20818775 V



21035637 V HEADLIGHT R.H. FH

FAROL L.D. FH

017312
21323106 V
21035637 V



FH /

21035638 V HEADLIGHT L.H. FH

FAROL L.E. FH

017311
21323108 V
21035638 V



FH /

21035690 V FOG LIGHT RH FH/FM

FAROL INF. AUXILIAR L.D. FH/FM

025535
21035690 V
21297909 V



21035692 V FOG LIGHT LH FH/FM

FAROL INF. AUXILIAR L.E. FH/FM

025536
21035692 V
21297911 V



21221153 V FOG LAMP RH FH/FM

FAROL AUXILIAR L.D. FH/FM =FOCO DUPLO=

025539
21221153 V
84186281 V
82140744 V
22332603 V
22332596 V
22332594 V



21221154 V FOG LAMP LH FH/FM

FAROL AUXILIAR L.E. FH/FM =FOCO DUPLO=

025540
21221154 V
84186279 V
82140763 V
22332604 V
22332600 V
22332597 V



21297917 V FOG LAMP R.H.

FAROL AUXILIAR L.D. (2 LAMP.) FH13/16

017206
21297917 V



21297918 V FOG LAMP LH (2 LAMPS)

FAROL AUXILIAR L.E. (2 LAMP.) FH13/16

017207
21297918 V



FH16 / FH13 /

2.07 FAROL HEAD LAMP

22239223 V HEAD LAMP L.H.

FAROL PRINCIPAL L.E. FH4
027989
22239223 V
21608660 V



22239225 V HEAD LAMP R.H.

FAROL PRINCIPAL L.D. FH4
027988
22239225 V
21608661 V



3981594 V HEADLIGHT

FAROL L.D./L.E. FH12
007512
8144286 V
3981594 V



FH16 / FM10 / FM7 / FH12 / FM12 /

82304585 V COMPLETE HEADLIGHT R.H.

FAROL COMPLETO L.D. FH/FM/NH/VM
017204
21123489 V
82304585 V



82304599 V HEADLIGHT L.H. FH/FM/NH/

FAROL COMPLETO L.E. FH/FM/NH/VM
017205
21123523 V
82304599 V



82310407 V HEAD LAMP R.H.

FAROL PRINCIPAL L.E. FH/FM
028003
82310407 V



82310411 V HEAD LAMP R.H.

FAROL PRINCIPAL L.D. FH/FM
028002
82310411 V



FMX /

82426817 V FRONT FOG LIGHT L.H. FMX

FAROL AUX. NEBLINA L.E. FMX
028007
82426817 V



82426818 V FRONT FOG LIGHT R.H. FMX

FAROL AUX. NEBLINA L.D. FMX
028006
82426818 V



FMX /

82428802 V LOW BEAM HEADLIGHT L.H.

FAROL INF. LUZ BAIXA L.E. FH/FM
028005
82428802 V



FH CLASSICO / FM CLASSICO /

82428804 V LOW BEAM HEADLIGHT R.H.

FAROL INF. LUZ BAIXA L.D. FH/FM
028004
82428804 V



FH CLASSICO / FM CLASSICO /

84550049 V HEAD LAMP L.H.

FAROL PRINCIPAL L.E. VM
027999
84550049 V
82526640 V



84550050 V HEAD LAMP R.H.

FAROL PRINCIPAL L.D. VM
027998
84550050 V
82532284 V



VM /

89210727 V HEAD LAMP L.H.

FAROL PRINCIPAL L.E. VM
028001
89210727 V



VM /

89210728 V HEAD LAMP R.H.

FAROL PRINCIPAL L.D. VM
028000
89210728 V



VM /

2.08 INTERRUPTOR SWITCH

1087960 V BRAKE LIGHT SWITCH

INTERRUPTOR LUZ FREIO SERVICIO NL/EDC/
003739
1087960 V
1622983 V
1594037 V



B7R / B10B / B10M / FH16 / NL12 / B58 / NL10 /
N10 / N12 / B7 / B12 / B10R / FH12 /

1087962 V BRAKE LIGHT SWITCH

INTER. BREACK-AR NL/EDC/B10M
003740
1087962 V
1622985 V
1594039 V



FH16 / NL12 / NL10 / N10 / N12 / F10 / F12 / F16 /
FL10 / FL7 / FH12 / FL12 /

1578133 V TEMPERATURE SWITCH

INTERRUPTOR TEMPERATURA N/NL
009331
1578133 V



1578704 V SWITCH

INTERRUPTOR LIMPADOR PARABRISA
013943
1578704 V



2.08 INTERRUPTOR SWITCH

1594042 V REVERSE LIGHT SWITCH

INTERRUPTOR LUZ RE
003742
1594042 V



21095380 V REAR AND BRAKE LIGHT

INTER. LUZ RE E FREIO FH12/16NL12S/12S/
014949
85116453 V
21318083 V
20853399 V
21095380 V



FL / FE /

3181369 V REAR LIGHT SWITCH B7/

INTERRUPTOR LUZ RE B7/B10M
017592
3181369 V



B10B / B7 / FL6 / FL608 / FL615 / FL616 / FL619 /
B7F / B10M / B7R /

3197870 V REAR LIGHT SWITCH FH

INTERRUPTOR LUZ RE FH
015354
3197870 V
1078493 V



FH16 / FM7 / FH12 / FM12 / FM9 / VM / FM10 /

3197871 V REAR LIGHT SWITCH FH

INTERRUPTOR LUZ REDUZIDA FH
018571
3197871 V
22354201 V
22194568 V



FH12 / NH12 / FM12 / FH16 / FM7 / VM / FM9 /

2.09 LANTERNA LANTERN

20409875 V FRONT LIGHT R.H. VL/FH

LANTERNA DIANT. L.D. FH/VL
015538
20409875 V



20456976 V CABIN INNER LAMP FH/FM

LANT. INT. CABINE FH/FM
027995
20456976 V



20507623 V REAR TAIL LIGHT L.H.

LANTERNA TRAS. L.E. C/VIGIA FH/FM/NH12
011828
20507623 V



FH12 / FH / FM / FM12 / FH16 / VM / FM9 / FL6 /

21761283 V REAR LIGHT RH FH/FM/VM

LANTERNA TRAS. L.D. FH/FM/VM
025529
20425729 V
21097448 V
21097449 V
21097450 V
21652944 V
21652946 V



21761288 V REAR LIGHT LR FH/FM/VM

LANTERNA TRAS. L.E. FH/FM/VM
025530
21761288 V
20425728 V
21097448 V
21652942 V
20892384 V



3981460 V REAR TAIL LIGHT L.H.

LANTERNA TRAS. L.E. C/VIGIA FH/FM/NH12
011831
3981460 V



3981461 V REAR TAIL LIGHT R.H.

LANTERNA TRAS. L.D. S/VIGIA FH/FM/NH12
011832
3981461 V
3981463 V
3981455 V



3981666 V PARKING LIGHT FRONT

LANTERNA ESTACIONAMENTO DIANT. FH 98
013953
3981666 V
8191142 V



FH16 / FM10 / FM7 / FH12 / FM12 / FH16J / FH12J /

82114500 V FRONT LIGHT R.H. FH/FM/VL

LANTERNA DIANT. L.D. FH/FM/VL-2010
015540
82114500 V



82114506 V FRONT LIGHT L.H. FH/FM/VL

LANTERNA DIANT. L.E. FH/FM/VL-2010
015541
82114506 V



82151157 V

LANT. LED PISCA DIANT. L.E. FH
024847
82151157 V
21346521 V



82151205 V

LANT. LED PISCA DIANT. L.D. FH
024848
82151205 V
21346522 V



2.09 LANTERNA

LANTERN

82278930 V POSITION LAMP L.H.

LANT. POSICAO TETO L.E. FH/FM4
027994
82278930 V
23477644 V



FH4 / FM4 /

82278938 V POSITION LAMP R.H FH/FM4

LANT. POSICAO TETO L.D. FH/FM4
027993
82278938 V
23477645 V



82349220 V POSITION LAMP L.H. FM/FH4

LANT. DELIMITADORA TETO L.E. FM/FH4
027991
82349220 V
23419658 V



82349221 V POSITION LAMP R.H FM/FH4

LANT. DELIMITADORA TETO L.D. FM/FH4
027990
82349221 V
23417574 V



FH4 / FM4 /

82355678 V FRONT SIGNAL LIGHT L.H

LANT. PISCA DIANTEIRA L.E. FH
025829
82355678 V
84139937 V



82355684 V FRONT SIGNAL LIGHT L.H

LANT. PISCA DIANTEIRA L.D. FH
027984
82355684 V
84139939 V



CLB00046 LIMITED LIGHT 70MM RED

LANT. DELIMIT. 70MM =VERM.=
018987
CLB00046



2.10 LENTE

LEN

20379428 V HEADLIGHT LENSE L.H. FH

LENTE FAROL L.E. FH/FM9/12
017202
20379428 V
20710524 V



FH12 / FM9 /

21118550 V FOG LAMP LENS LH

LENTE LENTE FAROL AUX. L.E.
028192
21118550 V



21120482 V FOG LAMP LENS RH

LENTE LENTE FAROL AUX. L.D.
028191
21120482 V



2.11 MAQUINA DE VIDRO

WINDOW LIFTER MECHANISM

3176549 V DOOR WINDOW LIFTER

MOTOR ELETRICO VIDRO PORTA L.E. FH/NH/
013994
3176549 V
1062010 V



FH16 / FM10 / FM7 / FH12 / FH / FM / FM12 / FM9 / NH12 /

3176550 V DOOR WINDOW LIFTER

MOTOR ELETRICO VIDRO PORTA L.D. FH/NH/
013993
3176550 V
1062011 V



FH16 / FM10 / FM7 / FH12 / FH / FM / FM12 / FM9 / NH12 /

2.12 MOTOR ELETRICO

DOOR WINDOW LIFTERS

20425122 V POWER LOCK FM9/FM12/FH/

MOTOR ELETRICO FM9/FM12/FH/FH12/NH12
025033
20425122 V
84173875 V



2.13 RELE

RELAYS

3985008 V RELY CENTRAL LOCK FH12/

RELE TRAVA CENTRAL FH12/FM7/12/NH12

017399
3985008 V



FH16 / FM10 / FM7 / FH12 / FM12 / FH16J / NH12 /
FL6 / FH12J /

2.14 SENSOR

SENSOR

1662938 V INDUCTIVE SENSOR W/

SENSOR INDUTIVO C/PINO RED. FH12/NH12

017589
1662938 V



FH12 / NH12 / FM12 /

20850557 V SUSPENSION LEVEL

SENSOR NIVEL SUSPENSAO FH12/16/FM9/12/

017398
20850557 V
20514066 V
8144352 V
9517678 V



B7R / B10M / FH16 / FH12 / FM12 / FM9 / B12M /
NH12 / B12R / B12B /

3.01 BUCHAS DIVERSAS

BUSHING ALL TYPE

TJG899441 ENGINE BUSHING

BUCHA PARTIDA
006707
TJG899441



7.100 / 8.100 / 8.140 / L.80 / 12.140T / 12.170BT /
12.180 / 14.150 / 14.170BT / 14.180 / 14.220 / 16.

3.02 CHAVE COMUTADORA/MIOLO/

SWITCH

2R2800375 IGNITION LOCK CYLINDER

CILINDRO IGNICAO CONSTELLATION
014344
2R2800375



17.250E CONSTELLATION / 24.
250ECONSTELLATION / 13.180E

3.03 ESTICADOR

BELT TENSIONER

2R0145299 BELT TENSIONER =

ESTIC. CORREIA MOTOR =ELETRONICO=
011246
2R0145299



17.250E / 23.250E / 24.250E / 8.150E / 13.170E /
15.170E / 15.190E / 9.150E / 15.180E / 13.180E /

2T2145299A BELT TENSIONER

ESTIC. CORREIA MOTOR
011247
2T2145299A
3973831
2T2145299



CONSTELLATION /

3.04 INTERRUPTOR

SWITCH

TAR953235 O LIGHT SWITCH

INTERRUPTOR PISCA ALERTA
007648
TAR953235 O



16.180CO / 16.210CO /

3.05 LANTERNA

LANTERN

T12945223A REAR LENS LANTERN

LENTE LANTERNA TRASEIRA

004471
T12945223A



6.90 / 7.90S / 7.110S / 11.130 / 13.130 / 14.140 /
14.210 / 16.210 / 8.150E / 8.100 / 8.120 / 8.150 /

T12953141 LENS LANTERN - FRONT

LENTE LANT. DIANT. ACRILICA

004475
T12953141
2TA953161
TAC953161



6.90 / 7.90S / 7.110S / 11.130 / 13.130 / 11.140 /
12.140 / 14.150 / 14.200 / 14.220 / 16.170 / 16.220

3.06 RELE

RELAYS

TJG953277 TRAFFIC WARNING LAMP

RELE LUZES EMERGENCIA

004957
TJG953277
1119532272



6.90 / 7.90S / 7.110 /

3.07 SENSOR

SENSOR

0289195011 TEMPERATURE MONITOR

SENSOR TEMPERATURA

004779
0289195011



6.90 / 11.130 / 13.130 / 11.140 / 7.90 /

4.01 INTERRUPTOR

SWITCH

TAR953235 O LIGHT SWITCH

INTERRUPTOR PISCA ALERTA
007648



B1618 ONIBUS / B1621 ONIBUS

4.02 LANTERNA

LANTERN

86HU13368AA FRONT TURN SIGNAL LIGHT

LANTERNA SETA DIANT. L.D.

018491
86HU13368AA
85HB13368AA



814/815 05/1996=11/2000 /

5.01 FAROL HEAD LAMP

500305102 HEADLIGHT R.H.

FAROL DIANTEIRO L.D. EUROTECH
015547
500305102
4861340
4861328



EUROTECH / 450E37 TRATOR 4X2 / 740E42 TZ
TRATOR 6X4 / 440E42 T TRATOR 4X2 / 450E37

500340503 HEADLIGHT R.H.

FAROL DIANT. L.D. EUROARGO/TECTOR
015721
500340503



EUROARGO /

500340543 HEADLIGHT L.H.

FAROL DIANT. L.E. EUROARGO/TECTOR
015722
500340543



EUROARGO /

504020189 HEADLIGHT R.H. STRALIS/

FAROL L.D. N.STRALIS/STRALIS/N.TRAKKER
015513
504020189



NOVO STRALIS / STRALIS / NOVO TRAKKER /
TRAKKER / 450S42 TP TRATOR 4X2 / 450S42

504020193 HEADLIGHT L.H. STRALIS/

FAROL L.E. N.STRALIS/STRALIS/N.TRAKKER
015512
504020193



NOVO STRALIS / STRALIS / NOVO TRAKKER /
TRAKKER / 450S42 TP TRATOR 4X2 / 450S42

504032145 FOG LIGHT R.H./L.H.

FAROL NEBLINA EXT. L.D/L.E. STRALIS
015491
504032145



450S42 TP TRATOR 4X2 / 450S42 HR TRATOR
4X2 / 450S42 T TRATOR 4X2 / 200S42

504032148 FOG LIGHT R.H./L.H.

FAROL NEBLINA INT. L.D/L.E. STRALIS
015550
504032148



450S42 TP TRATOR 4X2 / 450S42 HR TRATOR
4X2 / 200S42 CAMINHAO 4X2 / 450S42 T

504181095 FOG LAMP N. STRALIS

FAROL AUX. NEBLINA INTERNO N.STRALIS
016518
504181095



NOVO STRALIS / CURSOR /

504238093 HEADLIGHT R.H. STRALIS/

FAROL L.D. N.STRALIS/STRALIS/N.TRAKKER
024454
504238093



504238117 HEADLIGHT L.H. STRALIS/

FAROL L.E. N.STRALIS/STRALIS/N.TRAKKER
024453
504238117



5.02 LANTERNA LANTERN

504047264 MARKER LIGHT

LANTERNA TAPA SOL S/ SOQ. L.E. STRALIS/
017428
504047264



STRALIS / EUROTRAKKER / NOVO TRAKKER /
EUROTECH /

69500591 REAR LAMP RH NEW DAILY

LANTERNA TRASEIRA L.E. N.DAILY
025824
69500591



5.03 LENTE LEN

504238117 X HEAD LAMP LENS LH

LENTE FAROL L.E. STRALIS
025804
504238117 X
504238093 X



93161844 REAR LAMP LENS RH/LH

LENTE TRASEIRA L.D./L.E. STRALIS/
025830
93161844



6.01 FAROL
HEAD LAMP

9408200156 FOG LAMP RH AXOR

FAROL AUXILIAR L.D.=AXOR=
025534
9408200156



9408200161 HEAD LAMP LR AXOR

FAROL PRINCIPAL L.E.=AXOR=
025532
9408200161



9408200261 HEAD LAMP RH AXOR

FAROL PRINCIPAL L.D.=AXOR=
025531
9408200261



9438201461 HEADLAMP LH ACTROS

FAROL PRINCIPAL L.E. ACTROS(2009-2015)
025541
9438201461



6.02 LANTERNA
LANTERN

9408200321 FRONT LIGHT W/ SOCKET

LANTERNA DIANT. C/SOQUETE L.E. MBB
025773
9408200321



9408200421 TURN SIGNAL LIGHT W/

LANTERNA DIANT. C/SOQUETE L.D. MBB
025543
9408200421



6.03 MOLDURA
FRAME

9408850922 HEAD LAMP FRAME LH

MOLDURA FAROL L.E. AXOR
025809
9408850922



6.04 POLIA
PULLEY

3431557215 ALTERNATOR PULLEY

POLIA ALTERNADOR (1 CANAL.) OM 366/FPN
014051
3431557215



OM366 / OM366G / OM364LA / OM366 LA /

6.05 SENSOR

SENSOR

9795420318 OIL PRESSURE SENSOR

SENSOR PRESSAO OLEO

028103
9795420318
A9795420318



1218 / 1318 / 2635 / 2933 / AXOR 1718 / AXOR
1723 /

7.01 FAROL HEAD LAMP

1699300 HEAD LAMP L.H.

FAROL PRINCIPAL L.E. DAF

028044
1699300
1962755
1743684
1699313
1641742
1399902



XF105 /

1725270 FOG LAMP L.H.

FAROL AUX. DAF L.E. DAF

028048
1725270



XF105 /

1725271 FOG LAMP R.H.

FAROL AUX. DAF L.D. DAF

028047
1725271



XF105 /

1743690 HEAD LAMP L.H.

FAROL PRINCIPAL L.E. DAF

028046
1743690



1743691 HEAD LAMP R.H.

FAROL PRINCIPAL L.D. DAF

028045
1743691



1835874 HEAD LAMP L.H.DAF

FAROL PRINCIPAL L.E. DAF

028035
1835874



1835875 HEAD LAMP R.H. DAF

FAROL PRINCIPAL L.D. DAF

028036
1835875



1835886 FOG LAMP L.H.

FAROL AUX. DAF L.E. DAF

028038
1835886



XF /

1835887 FOG LAMP R.H. DAF

FAROL AUX. DAF L.D. DAF

028037
1835887



7.02 SENSOR SENSOR

2132521 FUEL PRESSURE SENSOR

SENSOR PRESSAO COMBUSTIVEL

027866
2132521
2041676
1826277
1785702



XF105 / CF85 /

Vendas / Sales: vendas@cipec.com.br
Geral / General: cipec@cipec.com.br
Televendas / Phone: +55 19 3834-9822
Fax / Fax: 0800.707.9822
www.cipec.com.br



Televendas: + 55 19 3834.9822



+ 55 54 3211.1800



+ 55 11 2626.8839

203473	3	2241828	4
233200	8	2241829	4
279732	8	2380954	6
285905	5	2380955	6
289563	9	2535366	4
290151	4	2535367	4
290950	5	2552708	4
290951	5	2552709	4
290955	5	2552715	4
293091	7	2655840	4
293092	7	2655841	4
331946	7	2659163	4
333653	7	2659164	4
334470	8	2659166	5
347893	3	2659167	5
353621	5		
353628	5		
360248	3		
365015	5		
365372	8		
371910	5		
389202	3		
397946	5		
532296	5		
537036	5		
1112819	8		
1308161	8		
1327015	3		
1347401	7		
1357522	7		
1358833	8		
1362693	3		
1371444	3		
1374052	8		
1380036	7		
1386087	6		
1387022	8		
1401789	8		
1402448	3		
1425019	3		
1442292	7		
1442293	7		
1446354	4		
1446356	4		
1446583	6		
1446584	6		
1491408	8		
1508180	5		
1508181	5		
1549814	6		
1549815	6		
1730878	5		
1732509	4		
1732510	4		
1747981	5		
1756751	5		
1756754	6		
1777165	8		
1798980	6		
1862890	8		
1889273	7		
1892324	4		
1940919	7		
2027555	6		
2027556	6		
2076264	7		
2076265	7		
2076266	7		
2076267	7		
2241544	6		

946176 V	10	89210727 V	12
1087960 V	12	89210728 V	12
1087962 V	12	CLB00046	14
1578133 V	12		
1578704 V	12		
1594042 V	13		
1662938 V	15		
3154315 V	11		
3176549 V	14		
3176550 V	14		
3181369 V	13		
3197870 V	13		
3197871 V	13		
3981460 V	13		
3981461 V	13		
3981594 V	12		
3981666 V	13		
3985008 V	15		
20360898 V	11		
20379428 V	14		
20382517 V	10		
20409875 V	13		
20425122 V	14		
20452848 V	11		
20456976 V	13		
20507623 V	13		
20752914 V	11		
20752918 V	11		
20752919 V	11		
20818763 V	11		
20818771 V	11		
20850557 V	15		
21035637 V	11		
21035638 V	11		
21035690 V	11		
21035692 V	11		
21095380 V	13		
21118550 V	14		
21120482 V	14		
21221153 V	11		
21221154 V	11		
21243844 V	10		
21297917 V	11		
21297918 V	11		
21448885 V	10		
21478751 V	10		
21761283 V	13		
21761288 V	13		
22239223 V	12		
22239225 V	12		
82114500 V	13		
82114506 V	13		
82151157 V	13		
82151205 V	13		
82278930 V	14		
82278938 V	14		
82304585 V	12		
82304599 V	12		
82310407 V	12		
82310411 V	12		
82349220 V	14		
82349221 V	14		
82355678 V	14		
82355684 V	14		
82426817 V	12		
82426818 V	12		
82428802 V	12		
82428804 V	12		
84550049 V	12		
84550050 V	12		

0289195011	17
2R0145299	16
2R2800375	16
2T2145299A	16
T12945223A	17
T12953141	17
TAR953235 O	16
TJG899441	16
TJG953277	17

ORIGINAL CODE FORD



86HU13368AA 18
TAR953235 O 18



Teleendas: + 55 19 3834.9822



+ 55 54 3211.1800



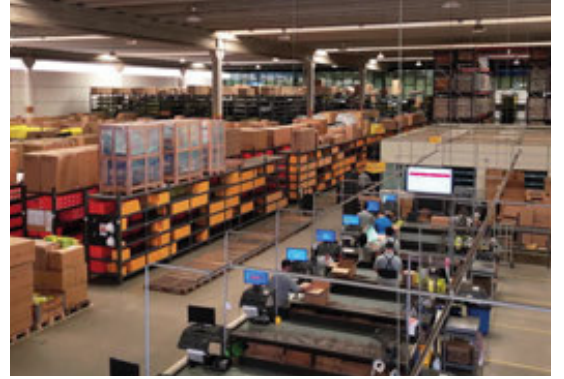
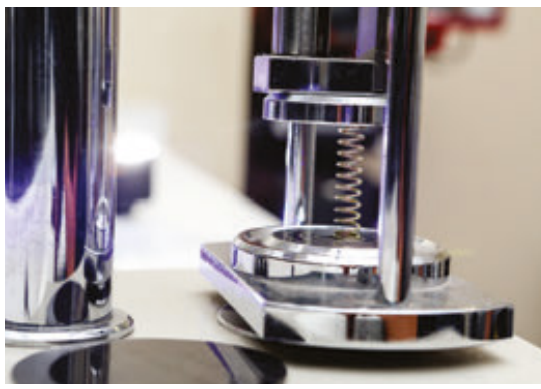
+ 55 11 2626.8839

www.cipec.com.br

69500591	19
93161844	19
500305102	19
500340503	19
500340543	19
504020189	19
504020193	19
504032145	19
504032148	19
504047264	19
504181095	19
504238093	19
504238117	19
504238117 X	19

3431557215	20
9408200156	20
9408200161	20
9408200261	20
9408200321	20
9408200421	20
9408850922	20
9438201461	20
9795420318	21





Conheça toda nossa linha de produtos:

- ✓ **Scania**
- ✓ **Volvo**
- ✓ **Iveco**
- ✓ **VW**
- ✓ **Mercedes**
- ✓ **Freios**
- ✓ **Daf**
- ✓ **Ford**



www.cipec.com.br

**EMPRESA CERTIFICADA
CERTIFIED COMPANY ISO 9001:2015**

