



CATÁLOGO PEÇAS DE REPOSIÇÃO
Spare Parts Catalogue

HIDRÁULICOS
Hydraulics

www.cipec.com.br

EMPRESA CERTIFICADA
CERTIFIED COMPANY ISO 9001:2015

Empresa

Company | La Empresa

A Cipec iniciou suas atividades em 1983 na cidade de São Caetano como um pequeno distribuidor e fabricante de peças de reposição para caminhões e ônibus. Trabalhando com empenho e seriedade, a Cipec rapidamente ampliou seu leque de produtos de distribuição, alcançando logo em seguida o status de referência nacional no mercado de reposição da linha Scania.

Em 1999, devido ao ritmo crescente dos negócios, a estrutura da Cipec já não comportava a demanda, levando a empresa a transferir suas atividades para uma área de 20.000 m² em Indaiatuba, localizada estrategicamente no interior paulista. Nesse novo local, a empresa investiu fortemente na parte fabril e agregou as linhas Volvo, VW, MWM, Cummins e Iveco.

Com amplo espaço fabril e novos nichos de mercado se abrindo, em 2003 a Cipec inovou mais uma vez, implantando uma completa linha de servos de embreagem, válvulas e reparos de freios para linha pesada. Surgiu então a NTI, uma marca Cipec que em pouco tempo ficaria conhecida no mercado, oferecendo um produto competitivo e altamente confiável.

Atualmente, a Cipec conta com mais de 170 colaboradores e comercializa mais de 22.000 itens a partir de sua unidade fabril localizada em Indaiatuba, ampliando ainda mais sua capacidade de produção e expedindo mais de 30 toneladas de produtos por dia para mais de 50 países em todo o mundo.

Cipec began its activities in 1983 in the city of São Caetano as a small distributor and manufacturer of spare parts for trucks and buses. Working with dedication and seriousness, Cipec quickly expanded its range of distribution products and soon achieved national reference status in the replacement market for the Scania line.

By 1999, its structure could no longer accommodate the growing pace of business, prompting Cipec to transfer its operations to a 20,000 m² area in Indaiatuba, strategically located in the interior of São Paulo. Strong investments were made in the manufacturing sector, and the Volvo, VW, MWM, Cummins, and Iveco lines were added.

With ample manufacturing space and new market niches emerging, Cipec innovated once again in 2003, introducing a complete line of clutch servos, valves, and brake repair kits for heavy-duty applications. Thus, NTI was born, a Cipec brand that quickly became known in the market, offering competitive and highly reliable products.

Today, Cipec employs over 170 employees and sells over 22,000 items from its manufacturing facility located in Indaiatuba, further increasing its production capacity and shipping over 30 tons of products per day to more than 50 countries worldwide.

La Cipec inició sus actividades en 1983 en la ciudad de São Caetano como un pequeño distribuidor y fabricante de repuestos para camiones y autobuses. Trabajando con dedicación y seriedad, Cipec amplió rápidamente su gama de productos de distribución y pronto alcanzó el estatus de referencia nacional en el mercado de repuestos para la línea Scania.

Para 1999, su estructura ya no podía soportar el creciente ritmo de negocios, lo que llevó a Cipec a trasladar sus operaciones a una área de 20,000 m² en Indaiatuba, estratégicamente ubicada en el interior de São Paulo. Se realizaron fuertes inversiones en el sector manufacturero y se añadieron las líneas Volvo, VW, MWM, Cummins y Iveco.

Con un amplio espacio de fabricación y nuevos nichos de mercado emergentes, Cipec innovó una vez más en 2003, introduciendo una línea completa de servos de embrague, válvulas y reparaciones de frenos para aplicaciones de servicio pesado. Así nació NTI, una marca de Cipec que rápidamente se hizo conocida en el mercado, ofreciendo productos competitivos y altamente confiables.

Hoy en día, Cipec emplea a más de 170 trabajadores y vende más de 22,000 artículos desde su planta de fabricación ubicada en Indaiatuba, aumentando aún más su capacidad de producción y enviando más de 30 toneladas de productos al día a más de 50 países en todo el mundo.



SCANIA	3
ABRACADEIRA	3
ANEL TRAVA	3
BOMBA DE OLEO	3
BOMBA DIRECAO HIDRAULICA	3
BORRACHA	4
CILINDRO	4
ENGRENAGEM	5
FLANGE	5
FLEXIVEL	5
JUNTA	6
MANGUEIRA	6
O'RING	6
PARAFUSO	7
REPARO FREIO	7
RESERVATORIO	7
RETENTOR	7
SUPORTE	8
TAMPA	8
VARETA	8
VOLVO	9
BOMBA DE OLEO	9
BOMBA DIRECAO HIDRAULICA	9
CILINDRO	9
VW	10
BOMBA DIRECAO HIDRAULICA	10
FLEXIVEL	10
RESERVATORIO	10
TAMPA	10
TUBO	11
FORD	12
TAMPA	12
IVECO	13
BOMBA DE OLEO	13
BOMBA DIRECAO HIDRAULICA	13
CILINDRO	13
DAF	14
BOMBA DE OLEO	14
CILINDRO	14
CONTATOS	15
ÍNDICE POR CÓDIGO	16

SCANIA 3

CLAMP	3
LOCK RING	3
OIL PUMP	3
POWER STEERING PUMP	3
RUBBER	4
CYLINDER	4
GEAR	5
FLANGE	5
FLEXIBLE	5
GASKET	6
HOSE	6
O'RING	6
SCREW	7
AIR BRAKE REPAIR KIT	7
CONTAINERS	7
RETAINER	7
BRACKET	8
COVER	8
ROD	8

VOLVO 9

OIL PUMP	9
POWER STEERING PUMP	9
CYLINDER	9

VW 10

POWER STEERING PUMP	10
FLEXIBLE	10
CONTAINERS	10
COVER	10
TUBE	11

FORD 12

COVER	12
-------	----

IVECO 13

OIL PUMP	13
POWER STEERING PUMP	13
CYLINDER	13

DAF 14

OIL PUMP	14
CYLINDER	14

CONTACTS 15

INDEX BY CODE 16

1.01 ABRACADEIRA CLAMP

1673643 CLAMP COMPLETE 112/3

ABRACADEIRA RESERV. HIDRAULICO 112/3

003633
1673643



T112 / T113 / F113 / R113 / K112 / R112 / R142 /
T142 / F112 / K113 / R143 / 93 /

1.02 ANEL TRAVA LOCK RING

804781 HYDR. STEERING BOX

ANEL TRAVA ROL. CX. DIR. HIDR.

002126
804781



K113 / R143 / L113 / P93 / P.G.R. / 94 /

804828 HYDR. STEERING BOX

ANEL TRAVA ROL. CX. DIR. HIDR.

002139
804828



T112 / T113 / F113 / R113 / K112 / K113 / R143 /

1.03 BOMBA DE OLEO OIL PUMP

1378527 CABIN TILT HYDRAULIC

B'B HIDR. BASCUL. CABINE

025986
368926
1378527
10575153
1575153
1422728
575153



1378531 HYDRAULIC CABIN TILT

B'B HIDR. BASCUL. CABINE 2 PONTAS S.3

017545
1378531
10575154
10575151
1575154
1575152
1575151



R113 /

1534976 HYDRAULIC PUMP S.4

B'B HIDR. BASCUL. CABINE S.4

015470
1534976
1397310



114 / 124 / 164 / 94 /

1534977 CABIN TILT HYDRAULIC

B'B HIDR. BASCUL. CABINE S4/P.G.R.T.

025987
1534977



1575155 CABIN HYDRAULIC PUMP

B'B HIDR. BASCUL. CABINE

028148
1575155
10575155
1378526
1118103
575155



1794906 CABIN TILT HYDRAULIC

B'B HIDR. BASCUL. CABINE P.G.R.T.

025990
1794906



1794907 CABIN HYDRAULIC PUMP

B'B HIDR. BASCUL. CABINE P.G.R.T.

019509
1794907
2204435
2081520



P.G.R. / P.G.R.S. /

2204436 CABIN TILT HYDRAULIC

B'B HIDR. BASCUL. CABINE P.G.R.T.

025989
2204436
1855566



1.04 BOMBA DIRECAO HIDRAULICA POWER STEERING PUMP

1308495 POWER STEERING PUMP

B'B DIRECAO HIDRAULICA 113

014907
1308495
1457708
1421272
571434
10571434
10571433



T113 / 114 / F113 / K113 / R113 / L113 /

1421273 POWER STEERING PUMP

B'B DIRECAO HIDR. DSC1121/22/23/DTC11

018263
1421273
10571435
10571432
1571435
1571432
1571396



1457710 POWER STEERING PUMP

B'B DIRECAO HIDRAULICA S.4/16DM3

014908
1457710
11439958
10571436
10571431
1571436
1571431



1457711 POWER STEERING PUMP

B'B DIRECAO HIDRAULICA S.4/22DM3

014909
1457711
10571437
10571430
10571297
1571437
1571297



114 / K124 / 94 / K94 / K114 / 124 / 164 /

1.04 BOMBA DIRECAO HIDRAULICA POWER STEERING PUMP

1504006 POWER STEERING PUMP S.

B'B DIRECAO HIDRAULICA S.4

015343
1504006
1371404
ZF7685955787



114 / 124 / K124 /

255028 POWER STEERING PUMP

B'B DIRECAO HIDRAULICA 112

014906
255028
10571364
10571028
1571364
571364
571028



/ T112 / K112 / R112 / F112

1.05 BORRACHA RUBBER

144272 HYDRAULIC OIL PUMP

BUCHA BORRACHA EIXO B'B HIDR. 111/2/3

000328
144272
319723
340895
1117730



L75 / L76 / LK141 / LK140 / 110 / 111 / T112 /
K112 / R112 / R142 / T142 / F112 /

1.06 CILINDRO CYLINDER

1500068 POWER STEERING

CILINDRO HIDR. DIRECAO S4/P.G.R.T.

025994
1500068
1364258



94 / 114 / 124 / 164 / P.G.R. / P.G.R.S. /

1549737 CABIN TILT HYDRAULIC

CILINDRO HIDR. BASCUL. CABINE P.G.R.T.

025992
1549737
1477876



1549739 CABIN TILT CYLINDER S.4

CILINDRO HIDR. BASCUL. CABINE CP (TETO)

015471
1575164
517325
549739
575103
575162
575164



94 / 114 / 124 / P.G.R. /

1720925 CABIN TILT HYDRAULIC

CILINDRO HIDR. BASCUL. CABINE P.G.R.T.

025991
1720925
1512253



1790111 CABIN TILT HYDRAULIC

CILINDRO HIDR. BASCUL. CABINE P.G.R.T.

025993
1790111



P.G.R. /

1828572 CABIN TILT CYLINDER

CILINDRO HIDR. BASCUL. CABINE

028254
1828572



P.G.R. - CP 4PT /

1848921 CABIN TILT CYLINDER S.4

CILINDRO HIDR. BASCUL. CABINE

025062
1848921



P.G.R. - CG /

1938630 CABIN TILT CYLINDER

CILINDRO HIDR. BASCUL. CABINE

028258
1938630



P.G.R. /

2295656 CABIN TILT CYLINDER

CILINDRO HIDR. BASCUL. CABINE

028259
2295656
2567561



L.P.G.R.S. (NTG) /

2567558 CABIN TILT CYLINDER

CILINDRO HIDR. BASCUL. CABINE

028256
2567558



NTG - CS /

2567559 CABIN TILT CYLINDER

CILINDRO HIDR. BASCUL. CABINE

028255
2567559



L.P.G.R.S. (NTG) /

1.07 ENGRENAGEM GEAR

1376357 HYDRAULIC PUMP GEAR

ENGRENAGEM B'B HIDRAULICA 124

012290
1376357



/ P.G.R. / 94 / 114 / 124 / 164 / K94 / K124

1.08 FLANGE FLANGE

1519675 POWER STEERING PUMP

FLANGE B'B DIRECAO HIDRAULICA S.4

013757
1519675
1498190
1461336
1404460



114 / 124 / P.G.R. / K124 /

1.09 FLEXIVEL FLEXIBLE

1371200 FLEXIBLE HIDRAULIC CAB

FLEX. HIDR. BASC. CABINE 94/114/24/64

006829
1371200
526569
2142436
1526569
40669



114 / 124 / 164 / 94 /

1371201 FLEXIBLE HIDRAULIC

FLEX. HIDR. TRAVA BASC. CABINE 94/114/24/

006830
1371201
2142438
1526570
40675



114 / 124 / 164 / 94 /

1371206 FLEXIBLE HIDRAULIC CAB

FLEX. HIDR. BASC. CABINE 94/114/24/64

006827
1371206
526573
2142425
1526573
1426339



114 / 124 / 164 / 94 /

1371207 FLEXIBLE HIDRAULIC CAB

FLEX. HIDR. BASC. CABINE 94/114/24/64

006828
1371207
2142433
1851212
1526571



114 / 124 / 164 / 94 /

1851249 FLEXIBLE HIDRAULIC CAB

FLEX. HIDR. BASC. CABINE S.4/P.G.R.T =

017118
1851249
2142410
1767480



P.G.R. /

2142418 FLEXIBLE HYDRAULIC FOR

FLEX. HIDR. BASCUL. CABINE P.G.R.

019598
2142418
1767481
1851250



P.G.R. / P.G.R.S. /

2142429 FLEXIBLE HIDRAULIC CAB

FLEX. HIDR. BASC. CABINE C14 P.G.R.T.

019332
2142429
1767478
1851247



P.G.R. / P.G.R.S. /

2142431 FLEXIBLE HIDRAULIC CAB

FLEX. HIDR. BASC. CABINE S.4/P.G.R.T.

019334
2142431
1851227
1547296



94 / 114 / 124 / 164 / P.G.R. / P.G.R.S. /

2142439 FLEXIBLE HIDRAULIC CAB

FLEX. HIDR. BASC. CABINE CP14 P.G.R.T.

019333
2142439
1851248



114 / 124 / 164 / P.G.R. / 94 / P.G.R.S. /

2142514 FLEXIBLE HIDRAULIC CAB

FLEX. HIDR. BASC. CABINE C14 P.G.R.T.

019331
2142514
1767485
1851253



P.G.R. / P.G.R.S. /

2142553 FLEXIBLE CABIN P.G.R.

FLEX. HIDR. BASCUL. CABINE P.G.R.

019592
2142553
1724100
1851238



P.G.R. / P.G.R.S. /

300808 HYDRAULIC STEERING

FLEXIVEL DIR. HIDRAULICA 112/142

001341
300808
525642



T112 / K112 / T142 /

1.09 FLEXIVEL

FLEXIBLE

322567 HYDRAULIC STEERING

FLEXIVEL DIR. HIDR. T/R112/3/R142

001513
322567
312346



T112 / R112 / R142 / K113 / T113 /

1.10 JUNTA

GASKET

1374346 PUMP HYDR. GASKET 94/

JTA B'B HIDR. 94/114/24

005994
1374346
1467988



114 / 124 / K124 /

301632 DISTRIBUTION COVER "P"

JUNTA TAMPA DISTR. "P" (B'B HIDR.) 112

001359
301632
1388685
371495
332598
255185
139274



LK141 / LK140 / 110 / 111 / T112 / T113 / F113 /
R113 / K112 / R112 / R142 / T142 / F112 / K113 /

1.11 MANGUEIRA

HOSE

1375391 HYDR. STEERING

MANG. RESERV. DIRECAO HIDR. 94/114/24/64

009048
1375391



114 / 124 / 164 / P.G.R. / 94 /

2095471 POWER STEERING

MANGUEIRA RESERV. DIRECAO HIDRAULICA

024996
2095471



2124545 HYDRAULIC FLUID

MANGUEIRA RESERV. HIDRAULICO P.G.R.T.

019495
2124545
2095472
1446715



P.G.R. / P.G.R.S. /

2124546 STEERING PUMP HOSE P.G.

MANGUEIRA RESERV. DIR. HIDRAULICA P.G.R.

019574
2124546
2095473
1853231



P.G.R. / P.G.R.S. /

2124547 RESERVOIR HOSE P.G.R.T.

MANGUEIRA RESERV. HIDRAULICO P.G.R.T.

019497
2124547
2095474
1853232



P.G.R. / P.G.R.S. /

2130341 STEERING PUMP HOSE P.G.

MANGUEIRA RESERV. DIR. HIDRAULICA P.G.R.

019568
2130341
1446714



P.G.R. / P.G.R.S. /

2553285 POWER STEERING HOSE N.

MANG. DIRECAO HIDRAULICA N.T.G.

027829
2553285



1.12 O'RING

O'RING

368035 HYDRAULIC PUMP O'RING 94/

O'RING B'B HIDRAULICA 94/114/124

006619
368035



T113 / F113 / R113 / R142 / T142 / K113 / R143 /
L113 / P93 / 114 / 124 / 164 / P.G.R. / K124 / 94 /

811052 HYDR. PUMP O'RING 112/3

O'RING BOMBA HIDRAULICA 112/3

002324
811052
173133
804723
392654



LK141 / LK140 / 110 / 111 / T112 / T113 / R113 /
R112 / R142 / T142 / 114 / 124 / 164 / 94 / T143 /

1.13 PARAFUSO SCREW

258698 HYDRA. STEERING SCREW

PARAFUSO CX. DIR. HIDRAULICA
001064
258698



LK140 / LK141 / T112 / R112 / K112 / F112 / R142 / T142 / F113 / K113 / R113 / T113 / R143 / L113 /

812392 HOLLOW SCREW 18 MM

PARAFUSO VAZ. (FLEX. DIR. HIDR) 18MM
002358
812392

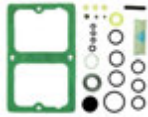


LK141 / LK140 / T112 / T113 / F113 / R113 / K112 / R112 / T142 / F112 / K113 / R143 / L113 / 114 /

1.14 REPARO FREIO AIR BRAKE REPAIR KIT

1320457 REPAIR KIT

REP. B/B HIDRAUL. BASCUL. S4
012036
1320457
1541984
1427793



R113 / R143 / 114 / 124 / 164 / P.G.R. / 94 /

1.15 RESERVATORIO CONTAINERS

1379152 CLUTCH PEDAL HYDRAULIC

RESERV. CIL. HIDR. PEDAL EMBR. P93/R143
006955
1379152
1349152
1118590



T113 / R113 / R143 / P93 /

1381561 HYDRAULIC CYLINDER

RESERV. CIL. HIDR. EMBR. S.4
010697
1381561



114 / 124 / 164 / P.G.R. / 94 / F94 / K94 /

1405788 HYDRAULIC OIL RESERVOIR

RESERV. OLEO HIDRAULICO S.4
009244
1405788
1386970
1894289
1461351



114 / 124 / 164 / 94 /

524094 HYDRAULIC OIL CONTAINER

RESERV. OLEO DIR. HIDRAULICA 113
006604
524094
1327382
318533
537016
297353



T112 / T113 / F113 / R113 / K112 / R112 / R142 / T142 / F112 / K113 / R143 / L113 / P93 /

538770 HYDRAULIC CYLINDER

RESERV. CIL. HIDR. EMBR. K113/R/T112/3
001920
538770



/ T112 / R112 / K112 / F112 / T142 / R142

1.16 RETENTOR RETAINER

165658 OIL SEAL STG BOX POWER

RETENTOR SETOR CX. DIRECAO HIDR.
000435
165658
318996
195532
10897



111 // LK140 / LK141 / T112 / R112 / K112 / F112 / T142 / R142 / F113 / K113 / R113 / T113 / R143 /

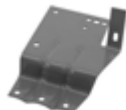
1.17 SUPORTE

BRACKET

397170 HYDR. STEERING OIL

SUPORTE RESERV. OLEO DIR. HIDR. T113

002735
397170
305284



T112 / T113 / T142 /

1.18 TAMPA

COVER

1361457 RESERVOIR COVER

TAMPA RESERV. OLEO HIDR. S.4

009007
1893294
1361457



114 / 124 / 164 / P.G.R. / 94 /

1374295 RESERVOIR COVER 113

TAMPA RESERV. CIL. HIDRAUL. 113

009093
1374295
1455736
280502



T113 / F113 / R113 / K113 / R143 / L113 / P93 /

318537 RESERVOIR COVER

TAMPA RESERV. HIDR. T113/P93/R143

009092
2433704
1343243
318537
93193396



T112 / T113 / F113 / R113 / K112 / R112 / R142 /
T142 / F112 / K113 / R143 / L113 / P93 /

522325 HYDR. CYLINDER

TAMPA RESERV. CILINDRO HIDR.

001711
522325



T112 / R112 / K112 / F112 / T142 / R142 /

T2D145407 RESERVOIR COVER

TAMPA RESERV. HIDR.

016262



R143 / P93 / 113

1.19 VARETA

ROD

1403855 OIL HIDR. DIPSTICK 94/114/

VARETA NIVEL OLEO DIR. HIDR. 94/114/124/

006609
1403855
1386973



114 / 124 / 164 / P.G.R. / 94 /

1953396 LEVEL LINK 112/3

VARETA NIVEL OLEO DIR. HIDR. 112/3

003504
1953396
311488



T112 / T113 / F113 / R113 / K112 / R112 / R142 /
T142 / F112 / K113 / R143 / L113 / P93 /

2.01 BOMBA DE OLEO OIL PUMP

1075296 V HYDRAULIC PUMP

B'B HIDR. BASCUL. CABINE FH =ATE 2003=

014890
1075296 V
1095005 V



FH16 / FM10 / FM7 / FH12 / FM12 /

20917279 V CABIN TILT HYDRAULIC

B'B HIDR. BASCUL. CABINE FH =PARTIR 2004=

014891
20917279 V
20917267 V
3198846 V
20455262 V



FH16 / FH12 / FH / FM / FM12 / FM9 /

2.02 BOMBA DIRECAO HIDRAULICA POWER STEERING PUMP

1589231 V POWER STEERING PUMP

B'B DIRECAO HIDRAULICA NL10/EDC

014902
1589231 V
8124341 V
5009253 V
5007935 V
5003253 V
5001935 V



NL10 / EDC /

3172490 V HYDRAULIC POWER

B'B DIRECAO HIDRAULICA FH12/FM12

018264
3172490 V
8119282 V
8113282 V



3986328 V POWER STEERING PUMP

B'B DIRECAO HIDRAULICA FH/NH12

014903
3986328 V
85000031 V
ZF7684974704 V



FH12 / FH / FM / FM12 / B12M / NH12 /

2.03 CILINDRO CYLINDER

20922303 V CABIN TILT CYLINDER

CILINDRO HIDR. BASCUL. CABINE

025063
20922303 V
20922308 V
3198842 V



FH12 / FM12 /

20922305 V TIPPER HYDRAULIC CABIN

CILINDRO HIDR. BASCUL. CABINE

025064
20922305 V
3198843 V



3.01 BOMBA DIRECAO HIDRAULICA

POWER STEERING PUMP

2R0145157 POWER STEERING PUMP

B'B DIRECAO HIDRAULICA

014905
2R0145157



7.100 / 8.140 / 8.140CO / 8.140CE / 7.110 / 8.150 /
7.120 / 8.120 / 9.150OD / 8.120OD / 8.150 OD / 8.

3.02 FLEXIVEL

FLEXIBLE

TE3145745A HYDR. STEERING HOSE

FLEXIVEL DIRECAO HIDRAULICA

004261
TE3145745A



14.210 /

3.03 RESERVATORIO

CONTAINERS

2TA145171 HIDRAULIC OIL CONTAINER

RESERV. OLEO HIDRAULICO

006781
2TA145171
T16145171
TJG145171



7.100 / 8.140 / 8.140CO / 8.140CE / L.80 / 12.
140T / 12.170BT / 12.180 / 14.150 / 14.170BT /

3.04 TAMPA

COVER

T2D145407 RESERVOIR COVER

TAMPA RESERV. HIDR.

016262
T2D145407
85HU3B725A



7.100 / 8.100 / 8.140 / 8.140CO / 8.140CE / L.80 /
12.140T / 12.170BT / 12.180 / 14.150 / 14.170BT

3.05 TUBO

TUBE

TAP145179 HYDR. STEERING OIL

TUBO RETORNO OLEO DIRECAO HIDR.

003979
TAP145179
2TA145179



7.100 / 8.100 / 8.140 / 8.140CO / 8.140CE / 8.140
ARGEN. / 8.140 CHILE / L.80 / 8.140CKD /

TGG145177 PRESSURE PIPE

TUBO PRESSAO B'B HIDRAULICA

014098
TGG145177



14.200 / 14.150 / 12.180 / 14.180 / 14.220 / 12.
170BT / 14.170BT /

**4.01 TAMPA
COVER**

T2D145407 RESERVOIR COVER

TAMPA RESERV. HIDR.
016262



815 / 1415CUM / 1317 / 1417 / 1215CUM /
F14000HD / F12000L / 1717 / 1617 / 1722 / 1731 /

5.01 BOMBA DE OLEO

OIL PUMP

41281222 CABIN TILT IVECO STRALIS

B'B HIDR. BASCUL. CABINE
028260
41281222
504173053



/ TECTOR / NOVO STRALIS

500316981 CABIN HYDRAULIC PUMP

B'B HIDR. BASCUL. CABINE TECTOR/CURSOR/
015468
500316981
99458298



EUROCARGO / TECTOR / CURSOR / 230E24
TECTOR 6X2 / 260E25 CAMINHAO 6X4 / 170E25

500370651 CABIN TILT HYDRAULIC

CILINDRO HIDR. BASCUL. CABINE
028263
500370651
5802758463
504173057



504173050 CABIN TILT HYDRAULIC

B'B HIDR. BASCUL. CABINE
028261
504173050
41241683
41211399



99458304 HYDRAULIC CABIN PUMP

B'B HIDR. BASCUL. CABINE EUROTECH/
015467
99458304
98478156



EUROTRAKKER / EUROTECH / POWERSTAR /
450E37 TRATOR 4X2 / 190E42 TRATOR 4X2 /

5.02 BOMBA DIRECAO HIDRAULICA

POWER STEERING PUMP

41211223 POWER STEERING PUMP S.

B'B DIRECAO HIDR. S. STRALIS/TRAKKER/
017024
41211223
ZF8695955116



NOVO STRALIS / STRALIS / CURSOR / NOVO
TRAKKER / TRAKKER /

5.03 CILINDRO

CYLINDER

504062817 CABIN TILT CYLLINDER

CIL. HIDR. BASCUL. CABINE EUROTECH/
015469
504062817
504173054
50037311
41031479
41030419



EUROTRAKKER / EUROTECH / 450E37
TRATOR 4X2 / 190E42 TRATOR 4X2 / 740E42

6.01 BOMBA DE OLEO

OIL PUMP

1450902 CABIN TILT PUMP FOR DAF

B'B HIDR. BASCUL. CABINE DAF

028146
1450902
1914281
1382282



/ CF85 / XF105

1450903 HYDRAULIC PUMP

B'B HIDR. BASCUL. CABINE DAF

028145
1450903
1914283
1382283



6.02 CILINDRO

CYLINDER

1444742 CABIN TILT CYLINDER

CILINDRO HIDR. BASCUL. CABINE

028252
1444742



CF85 / XF105 /

Vendas / Sales: vendas@cipec.com.br
Geral / General: cipec@cipec.com.br
Televendas / Phone: +55 19 3834-9822
Fax / Fax: 0800.707.9822
www.cipec.com.br



144272	4	2567559	4
165658	7	T2D145407	8
255028	4		
258698	7		
300808	5		
301632	6		
318537	8		
322567	6		
368035	6		
397170	8		
522325	8		
524094	7		
538770	7		
804781	3		
804828	3		
811052	6		
812392	7		
1308495	3		
1320457	7		
1361457	8		
1371200	5		
1371201	5		
1371206	5		
1371207	5		
1374295	8		
1374346	6		
1375391	6		
1376357	5		
1378527	3		
1378531	3		
1379152	7		
1381561	7		
1403855	8		
1405788	7		
1421273	3		
1457710	3		
1457711	3		
1500068	4		
1504006	4		
1519675	5		
1534976	3		
1534977	3		
1549737	4		
1549739	4		
1575155	3		
1673643	3		
1720925	4		
1790111	4		
1794906	3		
1794907	3		
1828572	4		
1848921	4		
1851249	5		
1938630	4		
1953396	8		
2095471	6		
2124545	6		
2124546	6		
2124547	6		
2130341	6		
2142418	5		
2142429	5		
2142431	5		
2142439	5		
2142514	5		
2142553	5		
2204436	3		
2295656	4		
2553285	6		
2567558	4		

1075296 V	9
1589231 V	9
3172490 V	9
3986328 V	9
20917279 V	9
20922303 V	9
20922305 V	9



2R0145157	10
2TA145171	10
T2D145407	10
TAP145179	11
TE3145745A	10
TGG145177	11

T2D145407

12



Teleendas: + 55 19 3834.9822



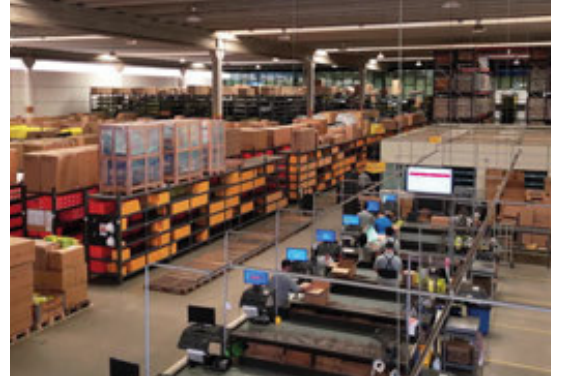
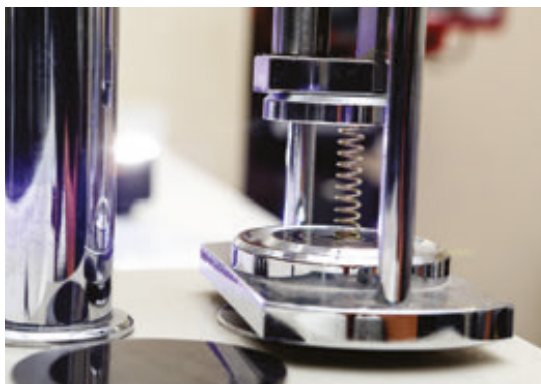
+ 55 54 3211.1800



+ 55 11 2626.8839

www.cipec.com.br

41211223	13
41281222	13
99458304	13
500316981	13
500370651	13
504062817	13
504173050	13



Conheça toda nossa linha de produtos:

- ✓ **Scania**
- ✓ **Volvo**
- ✓ **Iveco**
- ✓ **VW**
- ✓ **Mercedes**
- ✓ **Freios**
- ✓ **Daf**
- ✓ **Ford**



www.cipec.com.br

**EMPRESA CERTIFICADA
CERTIFIED COMPANY ISO 9001:2015**

