



**CATÁLOGO PEÇAS DE REPOSIÇÃO**  
*Spare Parts Catalogue*

**MERCEDES**

[www.cipec.com.br](http://www.cipec.com.br)

EMPRESA CERTIFICADA  
CERTIFIED COMPANY ISO 9001:2015

# Empresa

## Company | La Empresa

A Cipec iniciou suas atividades em 1983 na cidade de São Caetano como um pequeno distribuidor e fabricante de peças de reposição para caminhões e ônibus. Trabalhando com empenho e seriedade, a Cipec rapidamente ampliou seu leque de produtos de distribuição, alcançando logo em seguida o status de referência nacional no mercado de reposição da linha Scania.

Em 1999, devido ao ritmo crescente dos negócios, a estrutura da Cipec já não comportava a demanda, levando a empresa a transferir suas atividades para uma área de 20.000 m<sup>2</sup> em Indaiatuba, localizada estrategicamente no interior paulista. Nesse novo local, a empresa investiu fortemente na parte fabril e agregou as linhas Volvo, VW, MWM, Cummins e Iveco.

Com amplo espaço fabril e novos nichos de mercado se abrindo, em 2003 a Cipec inovou mais uma vez, implantando uma completa linha de servos de embreagem, válvulas e reparos de freios para linha pesada. Surgiu então a NTI, uma marca Cipec que em pouco tempo ficaria conhecida no mercado, oferecendo um produto competitivo e altamente confiável.

Atualmente, a Cipec conta com mais de 170 colaboradores e comercializa mais de 22.000 itens a partir de sua unidade fabril localizada em Indaiatuba, ampliando ainda mais sua capacidade de produção e expedindo mais de 30 toneladas de produtos por dia para mais de 50 países em todo o mundo.

Cipec began its activities in 1983 in the city of São Caetano as a small distributor and manufacturer of spare parts for trucks and buses. Working with dedication and seriousness, Cipec quickly expanded its range of distribution products and soon achieved national reference status in the replacement market for the Scania line.

By 1999, its structure could no longer accommodate the growing pace of business, prompting Cipec to transfer its operations to a 20,000 m<sup>2</sup> area in Indaiatuba, strategically located in the interior of São Paulo. Strong investments were made in the manufacturing sector, and the Volvo, VW, MWM, Cummins, and Iveco lines were added.

With ample manufacturing space and new market niches emerging, Cipec innovated once again in 2003, introducing a complete line of clutch servos, valves, and brake repair kits for heavy-duty applications. Thus, NTI was born, a Cipec brand that quickly became known in the market, offering competitive and highly reliable products.

Today, Cipec employs over 170 employees and sells over 22,000 items from its manufacturing facility located in Indaiatuba, further increasing its production capacity and shipping over 30 tons of products per day to more than 50 countries worldwide.

La Cipec inició sus actividades en 1983 en la ciudad de São Caetano como un pequeño distribuidor y fabricante de repuestos para camiones y autobuses. Trabajando con dedicación y seriedad, Cipec amplió rápidamente su gama de productos de distribución y pronto alcanzó el estatus de referencia nacional en el mercado de repuestos para la línea Scania.

Para 1999, su estructura ya no podía soportar el creciente ritmo de negocios, lo que llevó a Cipec a trasladar sus operaciones a una área de 20,000 m<sup>2</sup> en Indaiatuba, estratégicamente ubicada en el interior de São Paulo. Se realizaron fuertes inversiones en el sector manufacturero y se añadieron las líneas Volvo, VW, MWM, Cummins y Iveco.

Con un amplio espacio de fabricación y nuevos nichos de mercado emergentes, Cipec innovó una vez más en 2003, introduciendo una línea completa de servos de embrague, válvulas y reparaciones de frenos para aplicaciones de servicio pesado. Así nació NTI, una marca de Cipec que rápidamente se hizo conocida en el mercado, ofreciendo productos competitivos y altamente confiables.

Hoy en día, Cipec emplea a más de 170 trabajadores y vende más de 22,000 artículos desde su planta de fabricación ubicada en Indaiatuba, aumentando aún más su capacidad de producción y enviando más de 30 toneladas de productos al día a más de 50 países en todo el mundo.



## MERCEDES

3

|                          |    |
|--------------------------|----|
| ABRACADEIRA              | 3  |
| ACOPLAMENTO VISCOSO      | 3  |
| ANEIS DIVERSOS           | 3  |
| ARRUELA                  | 4  |
| BATENTE                  | 4  |
| BICO REFRIGERACAO        | 4  |
| BOIA COMBUSTIVEL         | 4  |
| BOMBA D'AGUA             | 5  |
| BOMBA DE OLEO            | 6  |
| BOMBA ESGUICHO PARABRISA | 6  |
| BOMBA MANUAL             | 6  |
| BUCHAS DIVERSAS          | 7  |
| CALCO                    | 7  |
| CASTANHA                 | 7  |
| CILINDRO                 | 7  |
| CONE                     | 9  |
| COXIM                    | 9  |
| ESPELHO RETROVISOR       | 10 |
| ESTICADOR                | 10 |
| FAROL                    | 10 |
| FILTRO                   | 10 |
| FLEXIVEL                 | 11 |
| HELICE                   | 11 |
| INSERTO                  | 11 |
| LANTERNA                 | 11 |
| MANCAL DE EMBREAGEM      | 12 |
| MANGUEIRA SILICONE       | 12 |
| MANOPLA                  | 13 |
| MOLDURA                  | 13 |
| O'RING                   | 13 |
| PALHETA / BRACO          | 14 |
| PINO                     | 14 |
| POLIA                    | 14 |
| PORCA                    | 14 |
| REPARO BOMBA D'AGUA      | 15 |
| REPARO MANGA DE EIXO     | 15 |
| REPAROS DIVERSOS         | 17 |
| RESERVATORIO             | 17 |
| RETENTOR                 | 17 |
| ROLAMENTO                | 17 |
| SENSOR                   | 18 |
| SERVO EMBREAGEM          | 18 |
| TAMPA                    | 19 |
| TERMINAL                 | 19 |
| TRAVA                    | 19 |
| TUBO FLEXIVEL            | 20 |
| VALVULA                  | 20 |

## CONTATOS

21

## ÍNDICE POR CÓDIGO

22



## MERCEDES

3

|                       |    |
|-----------------------|----|
| CLAMP                 | 3  |
| VISCOUS COUPLING      | 3  |
| RING                  | 3  |
| WASHER                | 4  |
| STOPPER               | 4  |
| NOZZLE COOLING        | 4  |
| FUEL FLOAT            | 4  |
| WATER PUMP            | 5  |
| OIL PUMP              | 6  |
| WINDSHIELD WIPER PUMP | 6  |
| HAND PUMP             | 6  |
| BUSHING ALL TYPE      | 7  |
| SHIM                  | 7  |
| CLAMP                 | 7  |
| CYLINDER              | 7  |
| CONE                  | 9  |
| RUBBER MOUNTING       | 9  |
| REAR VIEW MIRROR      | 10 |
| BELT TENSIONER        | 10 |
| HEAD LAMP             | 10 |
| FILTER                | 10 |
| FLEXIBLE              | 11 |
| FAN                   | 11 |
| INSERT                | 11 |
| LANTERN               | 11 |
| CLUTCH BEARING        | 12 |
| SILICON HOSE          | 12 |
| KNOB                  | 13 |
| FRAME                 | 13 |
| O'RING                | 13 |
| BLADE / ARM           | 14 |
| PIN                   | 14 |
| PULLEY                | 14 |
| NUT                   | 14 |
| WATER PUMP REPAIR KIT | 15 |
| KING PIN REPAIR KIT   | 15 |
| REPAIR KIT            | 17 |
| CONTAINERS            | 17 |
| RETAINER              | 17 |
| ROLLER BEARING        | 17 |
| SENSOR                | 18 |
| CLUTCH SERVO          | 18 |
| COVER                 | 19 |
| TERMINALS             | 19 |
| LOCKS                 | 19 |
| INOX FLEXIBLE TUBE    | 20 |
| VALVE                 | 20 |

## CONTACTS

21

## INDEX BY CODE

22

## 1.01 ABRACADEIRA

### CLAMP

#### 0019972590 CLAMP 51 X 64 - 2" X 2 1/2"

ABRAC. 51 X 64 - 2" X 2 1/2"  
006586  
0019972590



#### 3449977790 CLAMP 38 X 51 - 1 1/2" X 2"

ABRAC. 38 X 51 - 1 1/2" X 2"  
006584  
3449977790



#### 3449977890 CLAMP 57 X 76 - 2 1/2" X 3"

ABRAC. 57 X 76 - 2 1/2" X 3"  
006587  
3449977890



#### 3449979790 CLAMP 70 X 89 - 3" X 3 1/2"

ABRAC. 70 X 89 - 3" X 3 1/2"  
006588  
3449979790



#### 3449979890 CLAMP 89 X 108 - 3 1/2" X 4"

ABRAC. 89 X 108 - 3 1/2" X 4 1/4"  
006589  
3449979890



#### 3450700262 BRACKET FOR 3 INJECTION

ABRAC. 3 CANALETAS TUBO INJETOR  
021425  
3450700262  
3450700286  
3450700267  
3450700266



OM355 I / OM355 II / OM355 III / OM355 /

#### 3509970090 STEEL CLAMP 9 X 13 MM

ABRACADEIRA ACO 9 X 13 MM  
011041  
3509970090



#### 4960780186 CLAMP =COMPLETE=

ABRAC. P/ 6 TUBOS INJ. =COMPLETA=  
011040  
4960780186



#### 4960780386 CLAMP =COMPLETE=

ABRAC. P/ 4 TUBOS =COMPLETA=  
014343  
4960780386  
3760700366  
3450700366



## 1.02 ACOPLAMENTO VISCOSO

### VISCOUS COUPLING

#### 5412001822 FAN CLUTCH

ACOPL. VISCOSO VENTILADOR ACTROS  
028273  
5412001822  
5412001622  
5412001522  
5412001322  
5412001122  
5412000922



ACTROS /

## 1.03 ANEIS DIVERSOS

### RING

#### 0209974947 SEAL RING B1OF 70X79X5,3

ANEL VEDACAO B1OF - 70 X 79 X 5,3  
025690  
0209974947



#### 9793320060

ANEL PROTECAO MANGA EIXO MBB  
025742  
9793320060



#### 9793320080 KING PIN LOWER SEAL

ANEL VEDACAO INFERIOR MANGA EIXO MBB  
025741  
9793320080



#### 9793320180 KING PIN UPPER SEAL RING

ANEL VEDACAO SUPERIOR MANGA EIXO MBB  
025740  
9793320180



### 1.04 ARRUELA WASHER

#### 7603014104 WASHER KIT MBB

KIT ARRUELA MBB  
026683  
7603014104



#### 9423322062 KING PIN PRESSURE

ARRUELA PRESSAO MANGA EIXO MBB 50MM  
025640  
9423322062



#### 9793320162 KING PIN PRESSURE

ARRUELA PRESSAO MANGA EIXO MBB  
025738  
9793320162



#### A0003530162 SATELITE SUPPORT

ARRUELA ENC. SATEL. 14 A 16 TON. 2  
020368  
A0003530162



L1618 / L1620 / L1621 /

### 1.05 BATENTE STOPPER

#### 8961300504 PEDAL VALVE CUSHION

BATENTE BORRACHA VALVULA PEDAL  
014398



L1113 / L1114 / L1214 / L1218 / L1313 / L1314 /  
L1316 / L1317 / L1318 / L1414 / L1418 / L1418 E /

### 1.06 BICO REFRIGERACAO NOZZLE COOLING

#### 4071800684 PISTON NOZZLE COOLING

BICO REFRIG. PISTAO MOTOR MBB OM447  
007673  
4071800684



OM429 LA MBTC USA / OM449A / OM449LA B2 /  
OM449 LA /

#### 9061800243 PISTON NOZZLE COOLING

BICO REFRIG. PISTAO MOTOR MBB  
019880  
9061800243



### 1.07 BOIA COMBUSTIVEL FUEL FLOAT

#### A0135427617 FUEL LEVEL SENSOR

BOIA SENSOR TANQUE COMB. ACTROS/  
027396  
A0135427617  
0135427617  
0135427117  
0135420218  
0125427917  
0125427817



#### A0155424317 FUEL LEVEL SENSOR

BOIA SENSOR TANQUE COMB. ACTROS/  
027397  
A0155424317  
0155424317  
0095423018  
A0095423018



#### A0155424617 FUEL LEVEL SENSOR

BOIA SENSOR TANQUE COMB. ACTROS/  
027395  
A0155424617  
0155424617  
0095423218  
A0095423218



## 1.08 BOMBA D'AGUA WATER PUMP

### 3142000601 WATER PUMP MERCEDES

B'B D'AGUA MERCEDES OM 314 4CIL  
007823  
3142000601  
3142002901  
3142000604  
UB0608



L708 / 608 / L608 / L608D / L608E / L708D / L708E / 608 D / 708 / 708 D/E /

### 3452000201 WATER PUMP ASSY OM-355

B'B D'AGUA MERCEDES OM 355 5/6CIL  
022402  
3452000201



OH1419 / OH1517 / O355 / O364 / 2219 / 1924 / 1929 / 1519 /

### 3452000801 WATER PUMP ASSY OM-355

B'B D'AGUA MERCEDES OM 355 5/6CIL  
022401  
3452000801



1932 / 1933 / 1934 /

### 3452007101 WATER PUMP ASSY OM-355

B'B D'AGUA MERCEDES OM 355 5/6CIL  
007828  
3452007101  
20033



OH1419 / O364 / 1517 / 2219 / 1519 /

### 3522003801 WATER PUMP (UB-313)

B'B D'AGUA MBB C/TAMPA OM 352 6CIL  
007825  
3522003801  
3522009401



OM352 /

### 3522003801 A WATER PUMP (UB-313)

B'B D'AGUA MERCEDES OM 352 6CIL  
022399  
3522003801 A  
3522009401 A  
UB0314



OH1313 / OH1314 / OH1316 / O362 / 1514 / LPO1113 / 2216 / 1516 / 1513 / 1313 / 1314 / 1316

### 3522005401 WATER PUMP MERCEDES

B'B D'AGUA MERCEDES OM 352 6CIL  
007829  
3522005401  
3522009601



OF1113 / OF1313 / OH1313 / OH1316 / O362 / O364 / 1113 /

### 3522005401 A WATER PUMP MERCEDES

B'B D'AGUA MERCEDES OM 352 6CIL  
022404  
3522005401 A  
3522009601 A  
UB0362



OF1113 / OF1313 / OH1313 / OH1316 / O362 / O364 / 1113 /

### 3532000301 WATER PUMP MERCEDES

B'B D'AGUA MERCEDES OM 352 6CIL  
007826  
3532000301  
3532003701



OH1313 / OH1314 / OH1316 / O362 / 1514 / LPO1113 / 2216 / 1516 / 1513 / 1313 / 1314 / 1316

### 3532000301 A WATER PUMP MERCEDES

B'B D'AGUA MERCEDES OM 352/A 6CIL  
022400  
3532000301 A  
3532003701 A  
UB0316



OH1313 / OH1314 / OH1316 / O362 / 1514 / LPO1113 / 2216 / 1516 / 1513 / 1313 / 1314 / 1316

### 3532001101 WATER PUMP MERCEDES

B'B D'AGUA MERCEDES OM 352/A 6CIL  
022405  
3532001101



OF1113 / OF1313 / OH1313 / OH1316 / O362 / O364 / 1113 /

### 3532001101 A WATER PUMP MERCEDES

B'B D'AGUA MERCEDES OM 352/A 6CIL  
022406  
3532001101 A  
UB0364



OF1113 / OF1313 / OH1313 / OH1316 / O362 / O364 / 1113 /

### 3552001101 WATER PUMP ASSY OM-355

B'B D'AGUA MERCEDES OM 355 5/6CIL  
022403  
3552001101  
3522001501



OM355 / OM355 AFRICA /

### 3642000101 WATER PUMP MB 364/A/LA

B'B D'AGUA MERCEDES OM 364/A/LA 4CIL  
007831  
3642000101  
3642002001  
UB0610



OF809 / OF812 / LO809 / 1214 / 712C / 914C / LO812 / LO814 / 809 / 709 / 712E / 712 / O-500

### 3662000701 WATER PUMP OM-366. LA

B'B D'AGUA MERCEDES OM 366 E 366A 6CIL  
022407  
3662000701  
3662005901



OF1313 / OF1318 / 1214 / 1218 / 1414 / 1418 / 1714 / 1718 / 1721 / OF1317 / 1318 / 2314 /

### 3662000701 A WATER PUMP OM-366. LA

B'B D'AGUA MERCEDES OM 366A 6 CIL  
022408  
3662000701 A  
3662005901 A  
UB0366



OF1313 / OF1318 / 1214 / 1218 / 1414 / 1418 / 1714 / 1718 / 1721 / OF1317 / 1318 / 2314 /

### 3662005601 A WATER PUMP OM-366. LA

B'B D'AGUA MERCEDES OM 366 6 CIL  
022410  
3662005601 A  
3762000701 A  
3762000601 A  
3762000501 A  
3762000001 A



L1620 / LK1620 / OF1318 / OF1620 / OF1721 / OH1420 /

### 3662006801 WATER PUMP OM-366. LA

B'B D'AGUA MERCEDES OM 366LA 6CIL  
007834  
3662006801  
3762000901



L1218 / L1418 / L1620 / O371 UL / 1418 / 1418K / 1718K / OF1620 / 1720 / LK1620 / 1723 / 1720K /

### 3662006801 A WATER PUMP OM-366. LA

B'B D'AGUA MERCEDES OM 366LA -INTERC.  
022409  
3662006801 A  
3762000901 A  
UB0368



L1218 / L1418 / L1620 / O371 UL / 1418 / 1418K / 1718K / OF1620 / 1720 / LK1620 / 1723 / 1720K /

### 3762000501 WATER PUMP L-1620 OM-

B'B D'AGUA MERCEDES OM 366LA ECOLOGIC  
007833  
3762000501  
3762000701  
3762000601  
3762000001  
3662005601



L1620 / OF1318 / OF1721 / OH1420 / OF1620 / LK1620 /

### 4572000101 WATER PUMP OM-447/449

B'B D'AGUA MERCEDES OM 447/A/LA  
022411  
4572000101  
4572007001  
4572004701



L1625 / L1938 / L2325 / L2638 / LK2325 / LK2635 / LS1625 / LS1630 / LS1632 / LS1633 / LS1634 /

### 4572000201 WATER PUMP OM-447/449

B'B D'AGUA MERCEDES OM 447/A/LA  
022412  
4572000201



L1938 / L2638 / LK2638 / LS1938 / LS2638 / O400 UPA / O500 RS 1636 / O500 RSD 2036 / O500

### 4602000001 WATER PUMP OM-447/449

B'B D'AGUA MERCEDES OM 457LA/OM 460  
022413  
4602000001



1938S / 1944S /

### 4752000201 WATER PUMP OM-447/449

B'B D'AGUA MERCEDES OM 447/A/LA  
007832  
4752000201  
4752000101  
4752000001



L1625 / L1938 / L2325 / L2638 / LK2325 / LK2635 / LK2638 / LS1625 / LS1630 / LS1632 /

**1.08 BOMBA D'AGUA**

**WATER PUMP**

**9042002501 WATER PUMP O904/O906**

B'B D'AGUA O904/O906

007974  
9042002501  
9042003201  
9042002201  
9042000701  
9042000201



L1218 / L1418 / 712C / 914C / 1318 / L1622 /  
OF1418 / OF1722 / ATEGO1418 / ATEGO1718 /

**9062005701 WATER PUMP OM 926LA - 6**

B'B D'AGUA MERCEDES OM 926LA - 6CIL

022414  
9062005701  
9062004801  
9062004201



OF1115 / OF1721 / OF1722 / OF1730 / O500 R /  
O500 U / OH1418 / OH1518 / OH1621 / AXOR2825

**1.09 BOMBA DE OLEO**

**OIL PUMP**

**4571800801 OIL PUMP AXOR/ACTROS**

BOMBA OLEO AXOR/ACTROS

027443  
4571800801  
4571801601  
A4571801601  
A4571800801



AXOR2035 / AXOR2040 / AXOR2540 / AXOR2544  
/ AXOR2640 / AXOR2644 / AXOR3340 /

**0005336801 CABIN HYDRAULIC PUMP**

B'B HIDR. BASCUL. CABINE

028150  
0005332301  
A0005532301  
A0005532701  
A0005533701  
A0005533901  
A0005534001



**1.10 BOMBA ESGUICHO**

**WINDSHIELD WIPER PUMP**

**3508697021 WINDSHIELD WASHER**

BOMBA ESGUICHO PARABRISA

014236  
3508697021



**0008603247 WINDSHIELD WASHER**

ESGUICHO AGUA PARABRISA L.E. AXOR/

027596  
0008603247  
9738600047  
A9738600047  
A0008603247



**0008603347 WINDSHIELD WASHER**

ESGUICHO AGUA PARABRISA L.D. AXOR/

027595  
0008603347  
9738600147  
A9738600147  
A0008603347



**1.11 BOMBA MANUAL**

**HAND PUMP**

**0000900050 MANUAL PUMP**

BOMBA MANUAL

025148  
0000900050



## 1.12 BUCHAS DIVERSAS BUSHING ALL TYPE

### 3522680335 GEAR LEVER TOWN

BUCHA TORRE ALVAV. CAMBIO  
015070  
3522680335



OF1724 /

### A0002671250 FORK BUSHING

BUCHA GARFO SELETOR TRAMBUL. ACCELO  
020499  
A0002671250



ACCELO1016 / ACCELO815 / ACCELO915C /  
L1621 / L2418 /

## 1.13 CALCO SHIM

### 4420110259 CYLINDER LINER SHIM 0,

CALCO CAMISA 0,30 MM  
026952  
4420110259



### 4420110259 A CYLINDER LINER SHIM 0,10

CALCO CAMISA 0,10 MM - OM447  
027340  
4420110259 A



### 4420110259 B CYLINDER LINER SHIM 0,15

CALCO CAMISA 0,15 MM - OM447  
027341  
4420110259 B



### 4420110259 C CYLINDER LINER SHIM 0,

CALCO CAMISA 0,20 MM - OM447  
027342  
4420110259 C



### 4420110259 D CYLINDER LINER SHIM 0,

CALCO CAMISA 0,25 MM - OM447  
027343  
4420110259 D



### 4420110259 E CYLINDER LINER SHIM 0,

CALCO CAMISA 0,40 MM - OM447  
027344  
4420110259 E



### 4420110259 F CYLINDER LINER SHIM 0,

CALCO CAMISA 0,50 MM - OM447  
027345  
4420110259 F



## 1.14 CASTANHA CLAMP

### 3894020068 TRAILER REAR BRAKET

CASTANHA TRAS. 110/1/2/3 E CARRETAS  
025088  
3894020068



## 1.15 CILINDRO CYLINDER

### 0012608463 GEARBOX ACTUATOR

CIL. ATUADOR CX.CAMBIO  
027952  
0012608463  
0022609563  
A0022609563  
A0012608463



ACTROS / AXOR /

### 0012955906 CLUTCH MASTER

CIL. MESTRE EMBREAGEM L1929/35/38/41/  
012523  
0012955906



L1938 / L709 / L912 / L812 / L1935 / L1941 /  
L1929 / LK1929 /

### 0001313402 COMPRESSOR CYLINDER

CIL. COMPR. LK15 (VW) (MF0641)  
023452  
0001313402



L1218 / L1414 / L1418 / L1418 E / L1614 / L1618 /  
L1620 / L2314 / L2318 / LK1214 / LK1418 /

### 0014321005 CLUTCH CYLINDER MBB (NO

CARCACA CIL.LONGO SERVO EMBR.MBB S/  
022954  
0014321005



LS1935 / LS1941 / O371 RS / O371 RSD / O371  
RSE / O371 RSL / O400 / O400 RS / O400 RSD /

**1.15 CILINDRO**  
**CYLINDER**

**0022950206** CLUTCH MASTER  
CIL. MESTRE EMBREAGEM =AXOR ROSCA  
017551  
0022950206



AXOR1835 LS / AXOR1840 LS / AXOR1843 LS /  
AXOR2335 LS / AXOR2540 LS / AXOR2543 LS /

**0022950806** CLUTCH MASTER  
CIL. MESTRE EMBREAGEM ATEGO =MBB=  
017903  
0022950806




ATEGO1418 / ATEGO1718 / ATEGO1725 /  
ATEGO2425 / ATEGO1728 / ATEGO2428 /

**0022951607** CLUTCH CYLINDER ACCELO  
CIL. ACION.EMBR.ACCELO 712/715  
024356  
0022951607



ACCELO715C / 712 /

**0022952507** CLUTCH CYLINDER MB  
CIL. EMBREAGEM ACCELO  
025928  
0022952507  
A0022952507



ACCELO915C / ACCELO815 / ACCELO1016 /

**0022959106** CLUTCH MASTER  
CIL. MESTRE EMBREAGEM =MBB= AXOR  
017902  
0022959106  
0012959106



ACCELO 1016 / ACCELO 1315 / ATEGO1315 /  
ATEGO1418 / ATEGO1518 / ATEGO1419 / AXOR

**2B510014** COMPRESSOR LINER LK15  
CIL. COMPR. LK15 (VW) (MF0641)  
011538



L1218 / L1414 / L1418 / L1418 E / L1618 / L1620 /  
L2314 / L2318 / LK1214 / LK1418 / LK1618 /

**0032508515** RELEASE BEARING MBB  
CILINDRO ATUADOR MBB  
028143  
0032508515  
A0032508515



ATEGO / ACTROS / AROCS /

**0032509715** CLUTCH RELEASE  
CILINDRO ATUADOR ELETR. MBB  
028138  
0032509715  
510036410  
0032508615  
0032507015  
0032503515  
0032502115




ACTROS EVOLUTION /

**3452957006** CLUTCH MASTER  
CIL. MESTRE EMBREAGEM 370/371/OF1318  
012517  
3452957006  
RCCE00238



OF1318 / O370 / O371 /

**3842957006** CLUTCH MASTER  
CIL. MESTRE EMBREAGEM 371/OH1419/1420  
012516  
3842957006




L1214 / L1418 / L1618 / L1620 / LK1618 / O371 /  
OH1419 / OH1420 /

**3862957007** CLUTCH MASTER  
CIL. MESTRE EMBREAGEM L/LK/LS1621  
012524  
3862957007



L1618 / L1620 / L1621 /

**3882957006** CLUTCH MASTER  
CIL. MESTRE EMBREAGEM L/LS/LK1929/35/41  
012525  
3882957006



LK1935 / LK1941 / LS1929 / LS1935 / LS1941 /  
L1935 / L1941 / L1929 / LK1929 /

**4213051210** BRAKE BOOSTER  
CIL. AMPLIFICADOR FREIO =MBB ANTIGO 1113/  
016612



L1113 / L1313 / L1316 / L1318 / L1513 / L1514 /  
L1516 / L1517 / L1519 / L2013 / L2216 / L2219 /

**4213500830** GEARBOX CHANGING  
CIL. COMANDO ALOJAMENTO CX. CAMBIO  
027310



ACTROS / AXOR

**4213520820** GEARBOX ACTUATOR  
CIL. ATUADOR CX.CAMBIO  
027951



ACTROS / AXOR

**0004313414** BRAKE BOOSTER  
CIL. AMPLIFICADOR FREIO =MBB ANTIGO 1113/  
022568  
0004313414  
3644317014



L1113 / L1313 / L1316 / L1318 / L1513 / L1514 /  
L1516 / L1517 / L1519 / L2013 / L2216 / L2219 /

**0000721512** ENGINE BRAKE CYLINDER  
CILINDRO ACIONAMENTO ACELERADOR MBB  
009598  
0000721512



L1513 / L1514 / L1516 / L1519 / L1614 / L1618 /  
L1620 / L1621 / LK1513 / LK1514 / LK1516 /

**9709030104** CLUTCH SERVO HOUSING  
CIL. LONGO SERVO EMBR. S/INDIC.  
006457



L1620 / L1622 / L2325 / L2635 / L2638 / LK2325 /  
LK2638 / LS1625 / LS1630 / LS1632 / LS1634 /

**9792950006A** CLUTCH CYLINDER MBB  
CIL. EMBR. MBB-915/1016  
024835  
9792950006A  
9792950006



915 /

**9792950106** CLUTCH CYLINDER MBB-LO  
CIL. EMBR. MBB-LO 815/LO 916  
024836  
9792950106



LO916 / LO815 /

**A3842950006** CLUTCH MASTER  
CIL. MESTRE EMBREAGEM MBB  
018810  
A3842950006  
3842950006



OF1721 / OH1518 / OH1621 L / OF1418 / OF1722 /  
O500 / O500 R / O500 U / OF1417 / OF1218 / O500

**A9302600263**  
CIL. COMANDO ALOJAMENTO CX. CAMBIO  
027311  
A9302600263  
9302600263  
9302600163  
9302600063  
0022603863  
A9302600163



**A9452603963**  
CIL. ENGR. 3 POSICOES ACTROS  
027109  
A9452603963



**A9452642127** GEARBOX CHANGING  
CILINDRO COMANDO CX CAMBIO  
025273  
A9452642127  
9452642127



AXOR TODOS C/CAMBIO G210/211/240/260/280 /

## 1.15 CILINDRO CYLINDER

### B98139 LK38 ADAPTED LINER

CIL. COMPR. ADAPTACAO LK38  
011539



VEIC. C/MOTOR OM366 / L1519 / L1520 / L2219 / L2220 / LK1519 / LK1520 / LK2219 / LK2220 /

### C64110 COMPRESSOR CYLINDER

CIL. COMPR. LK39 (REGULADOR 88MM)  
011535



L1519 / L1520 / L2219 / L2220 / LK1520 / LK2219 / LK2220 / LS1519 / LS1520 / LS1524 / LS1525 /

### KN28031B1 CLUTCH CYLINDER ACCELO

CIL. ACION.EMBR.ACCELO 712 /715  
024357



712 / ACCELO715C

### KN3300133 CLUTCH CYLINDER ACCELO

CIL. EMBREAGEM ACCELO  
026489



ACCELO915C / ACCELO815 / ACCELO1016

### RCCE00122 CLUTCH MASTER CYL

CIL. MESTRE EMBR.L1929/35/38/41/LS1625/30/  
025422



L709 / L812 / L912 / L1929 / L1935 / L1938 / L1941 / LK1929

### RCCE00319 CLUTCH MASTER CYL. L/LK/

CIL. MESTRE EMBREAGEM L/LK/LS1621  
026379



L1618 / L1620 / L1621

### RCCE00335 CLUTCH MASTER CLY. 371/

CIL. MESTRE EMBR. 371/OH1419/1420  
026095



L1214 / L1418 / L1618 / L1620 / LK1618 / O371 / OH1419 / OH1420

### RCCE00361 CLUTCH MASTER CLY. L/LS/

CIL. MESTRE EMBREAGEM L/LS/LK1929/35/41  
026392



LK1935 / LK1941 / LS1929 / LS1935 / LS1941 / L1935 / L1941 / L1929 / LK1929

### VA3100033 CLUTCH CYLINDER ACCELO

CIL. EMBREAGEM ACCELO  
026490



ACCELO915C / ACCELO815 / ACCELO1016

## 1.16 CONE CONE

### A0059909582 ADAPTER

CONE PRIS. SEMI EIXO TRAS. A  
020255  
A0059909582



ATEGO1726 / ATEGO1729 / L1618 / L1620 / L1621 /

## 1.17 COXIM RUBBER MOUNTING

### 6342410513 REAR ENGINE MOUNTING

COXIM TRAS. SUSP. MOTOR MBB AXOR  
026976  
6342410513  
9412417713  
9412415713  
9412414713  
9412411713  
6342410913



### 9412418713 FRONT ENGINE MOUNTING

COXIM DIANT. MOTOR MBB ACTROS/AXOR  
027654  
9412418713  
A9412418713



**1.18 ESPELHO RETROVISOR**

**REAR VIEW MIRROR**

**9438110307 REAR VIEW MIRROR LH**

ESPELHO RETROV. MBB L.E. ACTROS  
025545  
9438110307



**9438110407 REAR VIEW MIRROR RH**

ESPELHO RETROV. MBB L.D. ACTROS  
025544  
9438110407



**1.19 ESTICADOR**

**BELT TENSIONER**

**4572001970 BELT TENSIONER AXOR**

ESTIC. CORREIA ALTERN. AXOR  
027762  
4602000970  
4602000570  
A4602000970  
A4602000570  
A4572001970  
4572001970



AXOR /

**4572003170 BELT TENSIONER ACTROS**

ESTIC. CORREIA ALTERN. ACTROS  
027765  
4572004570  
4572004370  
4572002970  
A4572004570  
A4572004370  
A4572003170



ACTROS / AXOR /

**4572003270 BELT TENSIONER ACTROS/**

ESTIC. CORREIA ALTERN. ACTROS/AXOR  
027763  
4572004770  
4572003870  
4572002770  
A4572004770  
A4572003870  
A4572003270



**4572004270 BELT TENSIONER ACTROS/**

ESTIC. CORREIA ALTERN. ACTROS/AXOR  
027764  
4572004470  
A4572004470  
A4572004270  
4572004270



**9062002070 BELT TENSIONER ATEGO/**

ESTIC. CORREIA ALTERN. ATEGO/AXOR  
027766  
9062001770  
9062001470  
9062000270  
A9062002070  
A9062001770  
A9062001470



ATEGO / AXOR /

**9062002670 BELT TENSIONER ATEGO/**

ESTIC. CORREIA ALTERN. ATEGO/ACTROS  
027774  
9062002670



ATEGO / ACTROS /

**9062004570 BELT TENSIONER**

ESTIC. CORREIA ALTERN.  
027775  
9062004570  
9062006770  
9062005970  
9062003770  
0002002470  
A9062006770



**1.20 FAROL**

**HEAD LAMP**

**9408200156 FOG LAMP RH AXOR**

FAROL AUXILIAR L.D.=AXOR=  
025534  
9408200156



**9408200161 HEAD LAMP LR AXOR**

FAROL PRINCIPAL L.E.=AXOR=  
025532  
9408200161



**9408200261 HEAD LAMP RH AXOR**

FAROL PRINCIPAL L.D.=AXOR=  
025531  
9408200261



**9438201461 HEADLAMP LH ACTROS**

FAROL PRINCIPAL L.E. ACTROS(2009-2015)  
025541  
9438201461



**1.21 FILTRO**

**FILTER**

**3640947004 SECURITY ELEMENT F/K11**

ELEMENTO SEGURANCA F/K11  
006566  
3640947004



## 1.22 FLEXIVEL FLEXIBLE

### 3092950035 CLUTCH PEDAL FLEXIBLE

FLEXIVEL PEDAL EMBREAGEM  
027007  
3092950035



## 1.23 HELICE FAN

### 2TB121303 O FAN WHEEL =8 BLADES=

HELICE CUMMINS =8 PAS PLAST=  
006014



OF1722 / OM906 / OM924 LA

### 9062050406 FAN BLADE

HELICE MOTOR  
028287  
9062050406  
A9062050406



L1620E / L1622E / L1624E / 2423 / 2428 /  
ATEGO1728 / ATEGO2425 / ATEGO 2726 /

## 1.24 INSERTO INSERT

### 1131161 APU VALVE MOUNT

INSERTO VALVULA APU =KNORR=  
013078



L1218 / L1414 / L1418 / L1418 E / L1618 / L1620 /  
LK1214 / LK1414 / LK1618 / LS1625 / LS1935 /

## 1.25 LANTERNA LANTERN

### 9408200321 FRONT LIGHT W/ SOCKET

LANTERNA DIANT. C/SOQUETE L.E. MBB  
025773  
9408200321



### 9408200421 TURN SIGNAL LIGHT W/

LANTERNA DIANT. C/SOQUETE L.D. MBB  
025543  
9408200421



## 1.26 MANCAL DE EMBREAGEM CLUTCH BEARING

**0012500615** BEARING CLUTCH  
MANCAL EMBREAGEM MERCEDES  
019164  
0012500615  
3388 S  
1378 R

2638S / AXOR3344 / AXOR4144 / AXOR3341 / AXOR4141 / AXOR2640 / AXOR2644 / AXOR3340

**0012500615 P** CLUTCH BEARING  
MANCAL EMBREAGEM MERCEDES  
022494  
0012500615 P  
3388 P  
1378 P

2638S / 1935 / 1941 / 1936 / 2625 / 2635 / AXOR4144 / AXOR3341 / AXOR4141 / AXOR3340

**0012500815** BEARING CLUTCH  
MANCAL EMBREAGEM MERCEDES  
019141  
0012500815  
0002509515  
3326 S  
1326 R

LO812 / LO814 / 809 / 608 / 709 / LO610 / LO914 / 812 / 912 / 914 / LO712 / 609 / LN710 / LO715 /

**0012502215** CLUTCH BEARING IVECO /  
MANCAL EMBREAGEM MERCEDES  
019155  
0012502215  
125807 E  
3325 S  
1320 R

OF1113 / OF1721 / OH1318 / OH1418 / OH1420 / OH1421 L / OH1621 L / 1218 / 1418 / 1721 /

**0012509215** CLUTCH BEARING FOR  
MANCAL EMBREAGEM MERCEDES  
019169  
0012509215  
0022503215  
125653 I  
3346 S  
3345 S  
1321 R

O400 RSD / O371 RS / O371 RSD / O371 RSL / O400 UP / OH1635 L / OH1636 L / O400 SER /

**0022504115 P** BEARING CLUTCH  
MANCAL EMBREAGEM MERCEDES  
022493  
0022504115 P  
0022506715 P  
0022504715 P  
125634 P  
10203 P  
3377 P

O400 RSD / O500 R / 1938S / 1944S / 1634 / 2038 / 1938 / 1944 / O500 RSD / 2726 / AXOR1933 /

**0002506415** CLUTCH BEARING  
MANCAL EMBREAGEM MBB  
024774  
0002506415  
3327

1525 / 1924 / 1929 / 1932 / 1933 / 1934 / 1630 / 1625 / 2225 /

**3082507215** CLUTCH BEARING  
MANCAL EMBREAGEM MERCEDES  
019016  
3082507215  
3082507015  
0002504015  
0002503715  
0002503115  
0002501705

OF1114 / OF1314 / OH1316 / O362 / O364 / 1518 / 1514 / 608 / 2216 / 1516 / L608D / L708D / 1513 /

**3212500515** CLUTCH BEARING  
MANCAL EMBREAGEM MERCEDES =ALTO=  
019028  
3212500515  
3522500115  
3402500215  
3358 S  
1300 R  
3522500515

OF1113 / OF1313 / OF1114 / OF1314 / OH1313 / OH1314 / OH1316 / O362 / O364 / 1518 / 1514 /

**3212501315** CLUTCH BEARING  
MANCAL EMBREAGEM MERCEDES =BAIXO=  
019031  
3212501315  
3452500215  
1312 R

OF1113 / OF1313 / OF1114 / OF1314 / OH1313 / OH1314 / OH1316 / O362 / O364 / O365 / 1518 /

## 1.27 MANGUEIRA SILICONE SILICON HOSE

**0020946382** INTERCOOLER HOSE AXOR  
MANGUEIRA INTERCOOLER AXOR  
027628  
0020946382  
0020945482  
0020941782  
0010947982  
A0020946382  
A0020945482

1721 / 1720 / 1722 / 1726 /

**3845011382** RED INTERCOOLER HOSE  
MANGUEIRA INTERCOOLER C/6 ANEIS =  
014979  
3845011382

1721 / 1720 / 1722 / 1726 /

**3845011482** INTERCOOLER HOSE  
MANGUEIRA INTERCOOLER C/6 ANEIS =  
017360  
3845011482

OF1318 / OF1115 / OF1218 / OF1319 /

**3845289182** INTERCOOLER HOSE  
MANG. RAD. AR C/5 ANEIS =SILIC.VERM=  
007964  
3845289182  
6965007375  
6845011082

OF1721 / 1938S / 1620 / 1720 / 1723S / 1726S / 1723K /

**6695280182** INTERCOOLER HOSE (W/4)  
MANGUEIRA INTERCOOLER C/4 ANEIS =  
016125  
6695280182  
0020947582

LO814ELETRONICO / LO914ELETRONICO /

**6695280282** INTERCOOLER HOSE (W/4)  
MANGUEIRA INTERCOOLER C/4 ANEIS =  
017358  
6695280282

TODOS MODELOS /

**6965007175** INTERCOOLER SILICONE  
MANG. RAD. AR C/5 ANEIS =SILIC.PRETA=  
017359  
6965007175

L1218 / L1318 / L1418 / L1620 / 1718 / 1721 / 1721S / LO812 / L2638 / LK2638 / LS1938 /

**9585013582** INTERCOOLER HOSE MBB  
MANG. INTERCOOLER MBB ATEGO/AXOR  
027043  
9585013582  
0005016182  
A9585013582  
A0005016182

ATEGO / AXOR /

## 1.27 MANGUEIRA SILICONE SILICON HOSE

**A4570980283** EXHAUST TURBO  
MANG. SAIDA TURBINA ACTROS/AXOR  
027196  
A4570980283  
4570980283



**A9585013382** INTERCOOLER BLACK  
MANGUEIRA INTERCOOLER AXOR  
026913  
A9585013382  
9585013382



AXOR /

**A9585013382 VE** INTERCOOLER RED HOSE  
MANGUEIRA INTERCOOLER AXOR  
027545  
A9585013382  
VE  
9585013382 VE



AXOR /

## 1.28 MANOPLA KNOB

**9432601509** GEARSHIFT KNOB ACTROS/  
MANOPLA CAMBIO ACTROS/AXOR  
020851  
9432601509



2035S / 2040S / 2044S / 1933 / 2625 / 2533 /


## 1.29 MOLDURA FRAME

**9408850922** HEAD LAMP FRAME LH  
MOLDURA FAROL L.E. AXOR  
025809  
9408850922



## 1.30 O'RING O'RING

**A0239970248** O'RING  
O'RING 34,0 X 4,0 (COD.7451)  
020766  
A0239970248



746 CAMINHÃO /

**1.31 PALHETA / BRACO**

**BLADE / ARM**

**0008203645 WINDSHIELD WIPER BLADE**

PALHETA LIMPADOR PARABRISA MBB

027573  
0008203645  
3818240126  
0018207345  
0018201245  
0008209745  
0008203745



**A0018201145 WIPER BLADE MBB**

PALHETA LIMPADOR PARABRISA MBB

027584  
A0018201145  
0018201145  
0018200445  
0008208145  
0008208045  
0008200445



**1.32 PINO**

**PIN**

**3212670025 GEAR LINK PIN SET**

JOGO PINO TRAMBULADOR CAMBIO

010615  
3212670025



O364 / O365 / OH1315 / OH1316 / OH1419 /  
OH1420 / OHL1420 /

**1.33 POLIA**

**PULLEY**

**3431557215 ALTERNATOR PULLEY**

POLIA ALTERNADOR (1 CANAL) OM 366/FPN

014051  
3431557215



OM366 / OM366G / OM364LA / OM366 LA /

**4572020310 WATER PUMP PULLEY**

POLIA B'B D'AGUA OM457

014054  
4572020310



OM460LA /

**1.34 PORCA**

**NUT**

**19906651 TURBO CAHARGER NUT**

PORCA PRISIONEIRO TURBINA

026678  
19906651



**0009941845 CLIP NUT 112/113**

PORCA CLIP ASSOALHO

006583  
0009941845



**A0039909250 NUT 5/8X18 UNF**

PORCA PO 5/8X18 UNF ATEGO

020264  
A0039909250



L1618 / L1620 / L1621 / ATEGO1729 /  
ATEGO1726 /

## 1.35 REPARO BOMBA D'AGUA WATER PUMP REPAIR KIT

**3142000601K** REPAIR WATER PUMP  
REP. B'B D'AGUA MERCEDES  
019060  
3142000601K  
3525860420  
3525860220  
3522000560  
UR0698

L608 / 608 D / 708 D/E / LO608 /

**3452000201X** REPAIR WATER PUMP  
REP. B'B D'AGUA MERCEDES  
019096  
3452000201X  
3552000704  
UR1358

OH1419 / OH1517 / O355 / O364 / 2219 / 1924 / 1929 / 1519 /

**3522001004** WATER PUMP REPAIR KIT  
REP. B'B D'AGUA OM352 COMPL.C/  
009506  
3522001004  
3522001304  
UR1315

OH1313 / OH1314 / OH1316 / O362 / 1514 / LPO1113 / 2216 / 1516 / 1513 / 1313 / 1314 / 1316

**3552000804** REPAIR WATER PUMP  
REP. B'B D'AGUA MERCEDES  
019090  
3552000804  
UR1359

1932 / 1933 / 1934 /

**3555860220** REPAIR WATER PUMP  
REP. B'B D'AGUA MERCEDES  
019084  
3555860220  
UR1356

OH1419 / O364 / 1517 / 2219 / 1519 /

**3642000204** REPAIR WATER PUMP  
REP. B'B D'AGUA MERCEDES  
019076  
3642000204  
UR0709

OF809 / OF812 / LO809 / 1214 / LO812 / LO814 / 809 / 709 / 712 / 1114 / 710 / 812 / 912 / 914 /

**3662000401** REPAIR WATER PUMP  
REP. B'B D'AGUA MERCEDES  
007827  
3662000401  
UR1364

OF1113 / OF1313 / OF1318 / OH1313 / OH1316 / 1214 / 1218 / 1414 / 1418 / 1714 / 1718 / 1721 /

**3762000204** REPAIR WATER PUMP  
REP. B'B D'AGUA MERCEDES  
019080  
3762000204  
UR1313

OH1313 / OH1314 / OH1316 / O362 / 1518 / 1514 / 608 / LPO1113 / 2216 / 1516 / 1513 / 1313 / 1314 /

**3762000304** REPAIR WATER PUMP  
REP. B'B D'AGUA MERCEDES  
019102  
3762000304  
UR1372

L1620 / OF1318 / OF1721 / OH1420 / OF1620 / LK1620 /

**3762000804** REPAIR WATER PUMP  
REP. B'B D'AGUA MERCEDES  
019098  
3762000804  
UR1371

L1218 / L1418 / L1620 / O371 UL / 1418 / 1418K / 1718K / OF1620 / 1720 / LK1620 / 1723 / 1720K /

**4572000004** REPAIR WATER PUMP  
REP. B'B D'AGUA MERCEDES  
019113  
4572000004  
UR1374

L2638 / LK2638 / LS2638 / 1938LS / 1938S / 1944S / 1938 /

**4572000005** REPAIR WATER PUMP  
REP. B'B D'AGUA MERCEDES  
019115  
4572000005  
UR1377

1938S / 1944S /

**9042001901** REPAIR WATER PUMP  
REP. B'B D'AGUA MERCEDES  
019116  
9042001901  
UR1375

L1218 / L1318 / L1418 / L1618 / L1620 / OF1721 / OH1418 / OH1518 / 1218 / 1418 / 1718 / 914C /

**9062000204** REPAIR WATER PUMP  
REP. B'B D'AGUA MERCEDES  
019120  
9062000204  
UR1376

1215C / AXOR1933 / AXOR2533 / AXOR2825 / AXOR2826 / AXOR2828 / AXOR2831 / O500 M /

## 1.36 REPARO MANGA DE EIXO KING PIN REPAIR KIT

**3503300019** KING PIN ONE SIDE MBB  
REP. MANGA MBB 51MM (STD)  
025714  
3503300019

1924 / 1929 / 1930 / 1932 / 1933 / 1935 / 1941 /

**3503300019 10** KING PIN ONE SIDE MBB  
REP. MANGA MBB 51MM (0,10)  
025715  
3503300019 10

1924 / 1929 / 1930 / 1932 / 1933 / 1935 / 1941 /

**3503300019 20** KING PIN ONE SIDE 51MM (0,  
REP. MANGA MBB 51MM (0,20)  
025716  
3503300019 20

1924 / 1929 / 1930 / 1932 / 1933 / 1935 / 1941 /

**3503300019 30** KING PIN MBB 51MM(0,30)  
REP. MANGA MBB 51MM (0,30)  
025717  
3503300019 30

1924 / 1929 / 1930 / 1932 / 1933 / 1935 / 1941 /

**1.36 REPARO MANGA DE EIXO**  
**KING PIN REPAIR KIT**

**3643300019** KING PIN SET REP. KIT  
REP. MANGA MBB 50MM (STD)  
025731  
3643300019

1935 / AXOR1933 / AXOR2035 / AXOR2040 / AXOR2826 / AXOR2831 / AXOR3340 / AXOR2533

**3643300019 10** KING PIN ONE SIDE MBB  
REP. MANGA MBB 50MM (0,10)  
025732  
3643300019 10

1935 / O370 / O371 / O371 R / O371 RS / AXOR2035 / AXOR2040 / AXOR2044 / AXOR2533

**3643300019 20** KING PIN ONE SIDE MBB  
REP. MANGA MBB 50MM (0,20)  
025733  
3643300019 20

1935 / O370 / O371 / O371 R / O371 RS / AXOR2035 / AXOR2040 / AXOR2044 / AXOR2533

**3643300019 30** KING PIN SET ONE SIDE  
REP. MANGA MBB 50MM (0,30)  
025734  
3643300019 30

1935 / O370 / O371 / O371 R / O371 RS / AXOR2035 / AXOR2040 / AXOR2044 / AXOR2533

**3763300319** KING PIN SET R.KIT ONE  
REP. MANGA MBB 38MM (STD)  
025471  
3763300319

FREIO A AR DO 1113 AO 2213 /

**3763300319 10** KING PIN SET COMPLETE  
REP. MANGA MBB 38MM (0,10)  
025472  
3763300319 10

FREIO A AR DO 1113 AO 2213 /

**3763300319 20** KING PIN SET COMPLETE  
REP. MANGA MBB 38MM (0,20)  
025473  
3763300319 20

FREIO A AR DO 1113 AO 2213 /

**3763300319 30** KING PIN REP. KIT  
REP. MANGA MBB 38MM (0,30)  
025474  
3763300319 30

FREIO A AR DO 1113 AO 2213 /

**3763300319 R1** KING PIN SET COMPLETE  
REP. MANGA MBB 38MM C/CHIME (0,10)  
028363  
3763300319 R1

**3763300319 R2** KING PIN SET COMPLETE  
REP. MANGA MBB 38MM C/CHIME (0,20)  
028364  
3763300319 R2

**3763300319 R3** KING PIN REP. KIT  
REP. MANGA MBB 38MM C/CHIME (0,30)  
028365  
3763300319 R3

**3763300319 RS** KING PIN SET R.KIT ONE  
REP. MANGA MBB 38MM C/CHIME (STD)  
028362  
3763300319 RS

**6753300019** KING PIN SET REP. KIT.  
REP. MANGA MBB 30MM (STD)  
025710  
6753300019

812 / 912 / 914 / 915 / OF809 / 912LO /

**6753300019 10** KING PIN REP. KIT  
REP. MANGA MBB 30MM (0,10)  
025711  
6753300019 10

812 / 912 / 914 / 915 / OF809 / 912LO /

**6753300019 20** KING PIN REP. KIT  
REP. MANGA MBB 30MM (0,20)  
025712  
6753300019 20

812 / 912 / 914 / 915 / OF809 / 912LO /

**6753300019 30** KING PIN SET COMPLETE  
REP. MANGA MBB 30MM (0,30)  
025713  
6753300019 30

812 / 912 / 914 / 915 / OF809 / 912LO /

**6963300019 10** KING PIN SET MB 45,1 MM  
REP. MANGA MBB 45 MM (0,10)  
025879  
6963300019 10  
3553300319 10

OF1722 /

**6963300019 20** KING PIN SET MB 45,3MM  
REP. MANGA MBB 45 MM (0,20)  
025880  
6963300019 20  
3553300319 20

OF1722 /

**6963300019 30** KING PIN SET MB 45,3MM  
REP. MANGA MBB 45 MM (0,30)  
025881  
6963300019 30  
3553300319 30

OF1722 /

**6963300019 C1** KING PIN SET MB 45,1 MM  
REP. MANGA MBB 45 MM C/CHIME (0,10)  
028945  
6963300019 C1

**6963300019 C3** KING PIN SET MB 45,3MM  
REP. MANGA MBB 45 MM C/CHIME (0,30)  
028947  
6963300019 C3

**9793300019**  
REP. MANGA MBB ACCELO (STD)  
025743  
9793300019

/ ACCELO 915 / ACCELO 916 / ACCELO 935 / ACCELO 1016

## 1.37 REPAROS DIVERSOS

### REPAIR KIT

#### 0009107238 SEAT LEVER REPAIR KIT

KIT REPARO BANCO

025893  
0009107238  
0019101538  
A0019101538  
A0009107238



## 1.38 RESERVATORIO

### CONTAINERS

#### 0005003049 EXPANSION TANK WITH

RESERV. RADIADOR C/TAMPA C/SENSOR

027418  
0005003049  
A0005003049



ACTROS /

#### 0005003149 EXPANSION TANK WITH

RESERV. RADIADOR C/TAMPA C/SENSOR

027419  
0005003149  
A0005003149



ACTROS 2546 2016/... / ACTROS 2646 2016/... /  
ACTROS 2651 2016/... /

#### A9705000449 EXPANSION TANK WITH

RESERV. RADIADOR C/TAMPA/SENSOR MBB

027421  
A9705000449  
97005000449  
9705000449



ATEGO1315 / ATEGO1418 / ATEGO1518 /  
ATEGO1718 / ATEGO1725 / ATEGO2428 /

## 1.39 RETENTOR

### RETAINER

#### 0019970646 RETAINER

RETENTOR DIR. HIDRAULICA =ZF=

007679  
0019970646



#### 0059973747 SEAL

RETENTOR DIR. HIDR. - AGL 1518

007682  
0059973747  
00899794447



#### 0079978446 DIF. PINION RETAINER

RETENTOR PINHAO DIFERENCIAL

007681  
0079978446  
0179977947  
0099970746



#### 0009974446 OIL SEAL 00500. BAG

RETENTOR FLANGE PINHAO

007680  
0009974446  
3469978346  
3459977346  
3449977346  
0069970546



## 1.40 ROLAMENTO

### ROLLER BEARING

#### 0169812710 NEEDLE BEARING 2720

ROLAMENTO AGULHAS 2720

025736  
0169812710



#### 3082547020 CLUTCH BEARING =

ROLAMENTO EMBREAGEM =S/CUBO=

019179  
3082547020



808 / 809 / 709 / 813 / 913 / 1322 / 1413 / 1417 /  
1513 / 1313 / 1113 / 608 D / 811 / 911 B / 1813

#### 3452547020 CLUTCH BEARING

MANCAL EMBREAGEM MERCEDES

019022  
3452547020  
3123198001  
1007 R  
0002540020



/ 608 D / 709 / 808 / 809 / 811 / 913 / 911 B / 1513  
/ 1813 (6X2) / 1113 / 1313 / 1114 / 1116 / 1314 /

#### 0049812125 FLY WHEEL BEARING =

ROL. VOLANTE MOTOR =MBB=

019263  
0049812125



OM457 LA /

#### 9799810011 NEEDLE BEARING 3520

ROLAMENTO AGULHAS 3520

025737  
9799810011



### 1.41 SENSOR

#### SENSOR

#### 0091533628 NOX SENSOR

SENSOR NOX ATEGO/ACTROS/AXOR

028086  
0091533628  
0061537328  
A0091533628  
A0061537328



ATEGO / AXOR / ACTROS /

#### 0095421017 SPEED SENSOR

SENSOR VELOCIDADE HALL MBB

027746  
0095421017  
A0095421017



#### 9705450124 COOLANT LEVEL SENSOR

SENSOR NIVEL D'AGUA ACCELO 715/915C/

025876  
9705450124



#### 9795420318 OIL PRESSURE SENSOR

SENSOR PRESSAO OLEO

028103  
9795420318  
A9795420318



1218 / 1318 / 2635 / 2933 / AXOR 1718 / AXOR 1723 /

### 1.42 SERVO EMBREAGEM

#### CLUTCH SERVO

#### 0012955607 A CLUTCH SERVO 110M

SERVO EMBR. 110MM TIPO WABCO

013190  
0012955607 A



L2325 / L2635 / LK2325 / LS1625 / LS1630 / LS1932 / LS1933 / LS1934 / LS1935 / LS1941 /

#### 0002500062 CLUTCH SERVO =ACTROS=

SERVO EMBR. MOD. ELETRONICO =ACTROS=

022551  
0002500062  
0002500562



ACTROS 2546 / ACTROS 2646 / ACTROS 2655 / ACTROS 4844 /

#### 0002500062 P REPAIR KIT CLUTCH

REP. SERVO EMBR. ACTROS =PARCIAL=

022911  
0002500062 P  
0002500562 P



ACTROS 2546 / ACTROS 2646 / ACTROS 2655 / ACTROS 4844 /

#### 0002500062 R REPAIR KIT CLUTCH

REP. SERVO EMBR. ACTROS

022910  
0002500062 R  
0002500562 R



ACTROS 2546 / ACTROS 2646 / ACTROS 2655 / ACTROS 4844 /

#### 0002540047 CLUTCH SERVO LONG

SERVO EMBR. =LONGO=

023338  
0002540047



1938S / 1944S / 2638S / O500 RSD /

#### 0002540147 SERVO CLUTCH 0-500

SERVO EMBR. O-500 TIPO WABCO

025423  
0002540147



OF1721 / OF1418 / OF1722 / OF1417 / O500 M /

#### 9700510010 CLUTCH SERVO =ACTROS=

SERVO EMBR. MOD. ELETRONICO ACTROS/

019441



AXOR TODOS COM CAMBIO AUTOMATICO / ACTROS TODOS COM CAMBIO AUTOMATICO /

#### 9700510010 C CLUTCH SERVO =ACTROS=

CL. SERVO EMBR. MOD. ELETRONICO =

023731



ACTROS 2546 / ACTROS 2646 / ACTROS 2655 / ACTROS 4844 / AXOR TODOS COM CAMBIO

#### 9700510010 CN REPAIR KIT CLUTCH

REP. SERVO EMBR. ACTROS

023811



ACTROS 2546 / ACTROS 2646 / ACTROS 2655 / ACTROS 4844 / AXOR TODOS COM CAMBIO

#### 9700510010 P REPAIR KIT CLUTCH

REP. SERVO EMBR. ACTROS =PARCIAL=

019350



ACTROS 2546 / ACTROS 2646 / ACTROS 2655 / ACTROS 4844 / AXOR TODOS COM CAMBIO

#### 9700510010 R REPAIR KIT CLUTCH

REP. SERVO EMBR. ACTROS

018675



ACTROS 2546 / ACTROS 2646 / ACTROS 2655 / ACTROS 4844 / AXOR TODOS COM CAMBIO

#### 970051280 A CLUTCH SERVO 110M

SERVO EMBR. 110MM TIPO WABCO

013189



L1620 / L2325 / L2635 / LK2325 / LS1625 / LS1630 / LS1932 / LS1933 / LS1934 / LS1935 /

#### 9700511630 CLUTCH SERVO (NO

SERVO EMBR. S/ IND. DESGASTE

014801



L1620 / L2325 / L2635 / LK2325 / LS1625 / LS1630 / LS1932 / LS1933 / LS1934 / LS1935 /

#### 9700511640 CLUTCH SERVO LONG

SERVO EMBR. CARCACA LONGA TP WABCO

014576  
9700511640  
0002951318



O400 RS / O400 RSD / O400 RSL / O371 RS / O371 RSD / O371 SRE / O400 / O400 UP /

#### 9700511900 CLUTCH SERVO O-500

SERVO EMBR. O-500 TIPO WABCO

018755



OF1721 / OF1418 / OF1722 / OF1417 / O500 M

#### 9700514310 CLUTCH SERVO (LONG)

SERVO EMBR. =LONGO=

014802



1938S / 1944S / O500 RSD / AXOR1933 / AXOR2036 / AXOR2541 / AXOR2041 / 2638B /

## 1.42 SERVO EMBREAGEM CLUTCH SERVO

### DCB0002950718 CLUTCH SERVO (NO

SERVO EMBR. S/ IND. DESGASTE

022858  
DCB000295071  
8  
0002950718



LS1935 / LS1941 / O400 RS / O400 RSD / O400  
RSL / O371 RS / O371 RSD / O371 RSL / O400 /

## 1.43 TAMPA COVER

### 3520100168 ENGINE OIL COVER

TAMPA OLEO MOTOR

010868  
3520100168



L608D / LO608D / L608E / L708D / L708E /

### 0004700605 COVER FUEL TANK W/ KEY

TAMPA COMBUSTIVEL COM CHAVE

023251  
0004700605



L1218 R / L1418 R / 915C / LO815 SUCESSOR  
ABS / LO916 / OF1417 / OF1418 / OF1519 /

### 4C65879 COVER APU

TAMPA VALVULA APU

007153



L1218 / L1414 / L1418 / L1418 E / L1614 / L1618 /  
L1620 / L2638 / LK1214 / LK1414 / LK1618 /

## 1.44 TERMINAL TERMINALS

### 071805013202 TIE ROD END W/PIN MBB

TERM. ESF. COM PINO MBB

023880  
071805013202



OF1313 / LP321 /

## 1.45 TRAVA LOCKS

### A0059909482 REAR WHEEL HUB

TRAVA ARANHA CUBO RODA TRAS. ATEGO

020373  
A0059909482



L1618 / L1620 / L1621 / ATEGO1729 /  
ATEGO1726 /

**1.46** TUBO FLEXIVEL  
INOX FLEXIBLE TUBE

**6344900565** EXHAUST FLEXIBLE TUBE

TUBO FLEX. ESCAPE O500  
027795  
6344900565



O500 /

**1.47** VALVULA  
VALVE

**0004770329** RETURN DIESEL VALVE

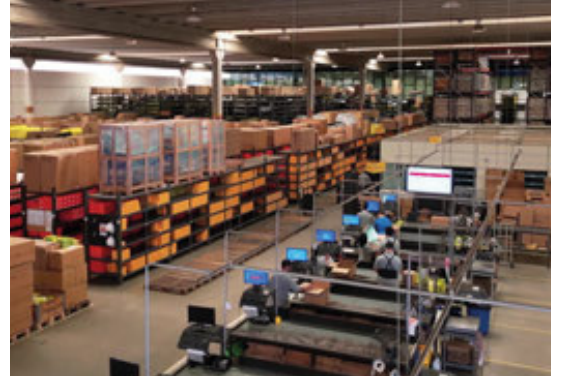
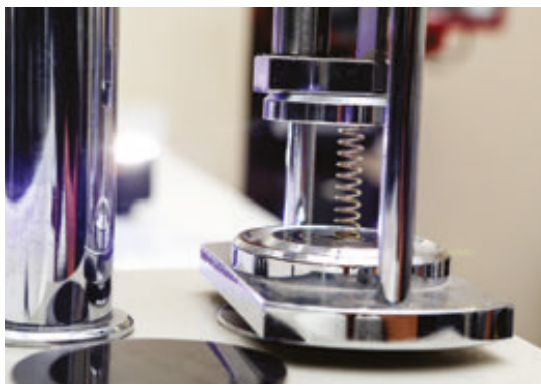
VALVULA RETORNO DIESEL  
006581  
0004770329  
1457413013



**Vendas / Sales:** vendas@cipec.com.br  
**Geral / General:** cipec@cipec.com.br  
**Televendas / Phone:** +55 19 3834-9822  
**Fax / Fax:** 0800.707.9822  
**www.cipec.com.br**



|               |    |               |    |               |    |                |    |
|---------------|----|---------------|----|---------------|----|----------------|----|
| 0000721512    | 8  | 3503300019 20 | 15 | 4572020310    | 14 | A0002671250    | 7  |
| 0000900050    | 6  | 3503300019 30 | 15 | 4602000001    | 5  | A0003530162    | 4  |
| 0001313402    | 7  | 3508697021    | 6  | 4752000201    | 5  | A0018201145    | 14 |
| 0002500062    | 18 | 3509970090    | 3  | 4960780186    | 3  | A0039909250    | 14 |
| 0002500062 P  | 18 | 3520100168    | 19 | 4960780386    | 3  | A0059909482    | 19 |
| 0002500062 R  | 18 | 3522001004    | 15 | 5412001822    | 3  | A0059909582    | 9  |
| 0002506415    | 12 | 3522003801    | 5  | 6342410513    | 9  | A0135427617    | 4  |
| 0002540047    | 18 | 3522003801 A  | 5  | 6344900565    | 20 | A0155424317    | 4  |
| 0002540147    | 18 | 3522005401    | 5  | 6695280182    | 12 | A0155424617    | 4  |
| 0004313414    | 8  | 3522005401 A  | 5  | 6695280282    | 12 | A0239970248    | 13 |
| 0004700605    | 19 | 3522680335    | 7  | 6753300019    | 16 | A3842950006    | 8  |
| 0004770329    | 20 | 3532000301    | 5  | 6753300019 10 | 16 | A4570980283    | 13 |
| 0005003049    | 17 | 3532000301 A  | 5  | 6753300019 20 | 16 | A9302600263    | 8  |
| 0005003149    | 17 | 3532001101    | 5  | 6753300019 30 | 16 | A9452603963    | 8  |
| 0005336801    | 6  | 3532001101 A  | 5  | 6963300019 10 | 16 | A9452642127    | 8  |
| 0008203645    | 14 | 3552000804    | 15 | 6963300019 20 | 16 | A9585013382    | 13 |
| 0008603247    | 6  | 3552001101    | 5  | 6963300019 30 | 16 | A9585013382 VE | 13 |
| 0008603347    | 6  | 3555860220    | 15 | 6963300019 C1 | 16 | A9705000449    | 17 |
| 0009107238    | 17 | 3640947004    | 10 | 6963300019 C3 | 16 | B98139         | 9  |
| 0009941845    | 14 | 3642000101    | 5  | 6965007175    | 12 | C64110         | 9  |
| 0009974446    | 17 | 3642000204    | 15 | 7603014104    | 4  | DCB0002950718  | 19 |
| 0012500615    | 12 | 3643300019    | 16 | 8961300504    | 4  | II31161        | 11 |
| 0012500615 P  | 12 | 3643300019 10 | 16 | 9042001901    | 15 | KN28031B1      | 9  |
| 0012500815    | 12 | 3643300019 20 | 16 | 9042002501    | 6  | KN3300133      | 9  |
| 0012502215    | 12 | 3643300019 30 | 16 | 9061800243    | 4  | RCCE00122      | 9  |
| 0012509215    | 12 | 3662000401    | 15 | 9062000204    | 15 | RCCE00319      | 9  |
| 0012608463    | 7  | 3662000701    | 5  | 9062002070    | 10 | RCCE00335      | 9  |
| 0012955607 A  | 18 | 3662000701 A  | 5  | 9062002670    | 10 | RCCE00361      | 9  |
| 0012955906    | 7  | 3662005601 A  | 5  | 9062004570    | 10 | VA3100033      | 9  |
| 0014321005    | 7  | 3662006801    | 5  | 9062005701    | 6  |                |    |
| 0019970646    | 17 | 3662006801 A  | 5  | 9062050406    | 11 |                |    |
| 0019972590    | 3  | 3762000204    | 15 | 9408200156    | 10 |                |    |
| 0020946382    | 12 | 3762000304    | 15 | 9408200161    | 10 |                |    |
| 0022504115 P  | 12 | 3762000501    | 5  | 9408200261    | 10 |                |    |
| 0022950206    | 8  | 3762000804    | 15 | 9408200321    | 11 |                |    |
| 0022950806    | 8  | 3763300319    | 16 | 9408200421    | 11 |                |    |
| 0022951607    | 8  | 3763300319 10 | 16 | 9408850922    | 13 |                |    |
| 0022952507    | 8  | 3763300319 20 | 16 | 9412418713    | 9  |                |    |
| 0022959106    | 8  | 3763300319 30 | 16 | 9423322062    | 4  |                |    |
| 0032508515    | 8  | 3763300319 R1 | 16 | 9432601509    | 13 |                |    |
| 0032509715    | 8  | 3763300319 R2 | 16 | 9438110307    | 10 |                |    |
| 0049812125    | 17 | 3763300319 R3 | 16 | 9438110407    | 10 |                |    |
| 0059973747    | 17 | 3763300319 RS | 16 | 9438201461    | 10 |                |    |
| 0079978446    | 17 | 3842957006    | 8  | 9585013582    | 12 |                |    |
| 0091533628    | 18 | 3845011382    | 12 | 9700510010    | 18 |                |    |
| 0095421017    | 18 | 3845011482    | 12 | 9700510010 C  | 18 |                |    |
| 0169812710    | 17 | 3845289182    | 12 | 9700510010 CN | 18 |                |    |
| 0209974947    | 3  | 3862957007    | 8  | 9700510010 P  | 18 |                |    |
| 071805013202  | 19 | 3882957006    | 8  | 9700510010 R  | 18 |                |    |
| 19906651      | 14 | 3894020068    | 7  | 9700511280 A  | 18 |                |    |
| 3082507215    | 12 | 4071800684    | 4  | 9700511630    | 18 |                |    |
| 3082547020    | 17 | 4213051210    | 8  | 9700511640    | 18 |                |    |
| 3092950035    | 11 | 4213500830    | 8  | 9700511900    | 18 |                |    |
| 3142000601    | 5  | 4213520820    | 8  | 9700514310    | 18 |                |    |
| 3212500515    | 12 | 4420110259    | 7  | 9705450124    | 18 |                |    |
| 3212501315    | 12 | 4420110259 A  | 7  | 9709030104    | 8  |                |    |
| 3212670025    | 14 | 4420110259 B  | 7  | 9792950106    | 8  |                |    |
| 3431557215    | 14 | 4420110259 C  | 7  | 9793300019    | 16 |                |    |
| 3449977790    | 3  | 4420110259 D  | 7  | 9793320060    | 3  |                |    |
| 3449977890    | 3  | 4420110259 E  | 7  | 9793320080    | 3  |                |    |
| 3449979790    | 3  | 4420110259 F  | 7  | 9793320162    | 4  |                |    |
| 3449979890    | 3  | 4571800801    | 6  | 9793320180    | 3  |                |    |
| 3450700262    | 3  | 4572000004    | 15 | 9795420318    | 18 |                |    |
| 3452000201    | 5  | 4572000005    | 15 | 9799810011    | 17 |                |    |
| 3452000801    | 5  | 4572000101    | 5  | 2B510014      | 8  |                |    |
| 3452007101    | 5  | 4572000201    | 5  | 2TB121303 O   | 11 |                |    |
| 3452547020    | 17 | 4572001970    | 10 | 3142000601K   | 15 |                |    |
| 3452957006    | 8  | 4572003170    | 10 | 3452000201X   | 15 |                |    |
| 3503300019    | 15 | 4572003270    | 10 | 4C65879       | 19 |                |    |
| 3503300019 10 | 15 | 4572004270    | 10 | 9792950006A   | 8  |                |    |



**Conheça toda nossa linha de produtos:**

- ✓ **Scania**
- ✓ **Volvo**
- ✓ **Iveco**
- ✓ **VW**
- ✓ **Mercedes**
- ✓ **Freios**
- ✓ **Daf**
- ✓ **Ford**



**[www.cipec.com.br](http://www.cipec.com.br)**

**EMPRESA CERTIFICADA  
CERTIFIED COMPANY ISO 9001:2015**

