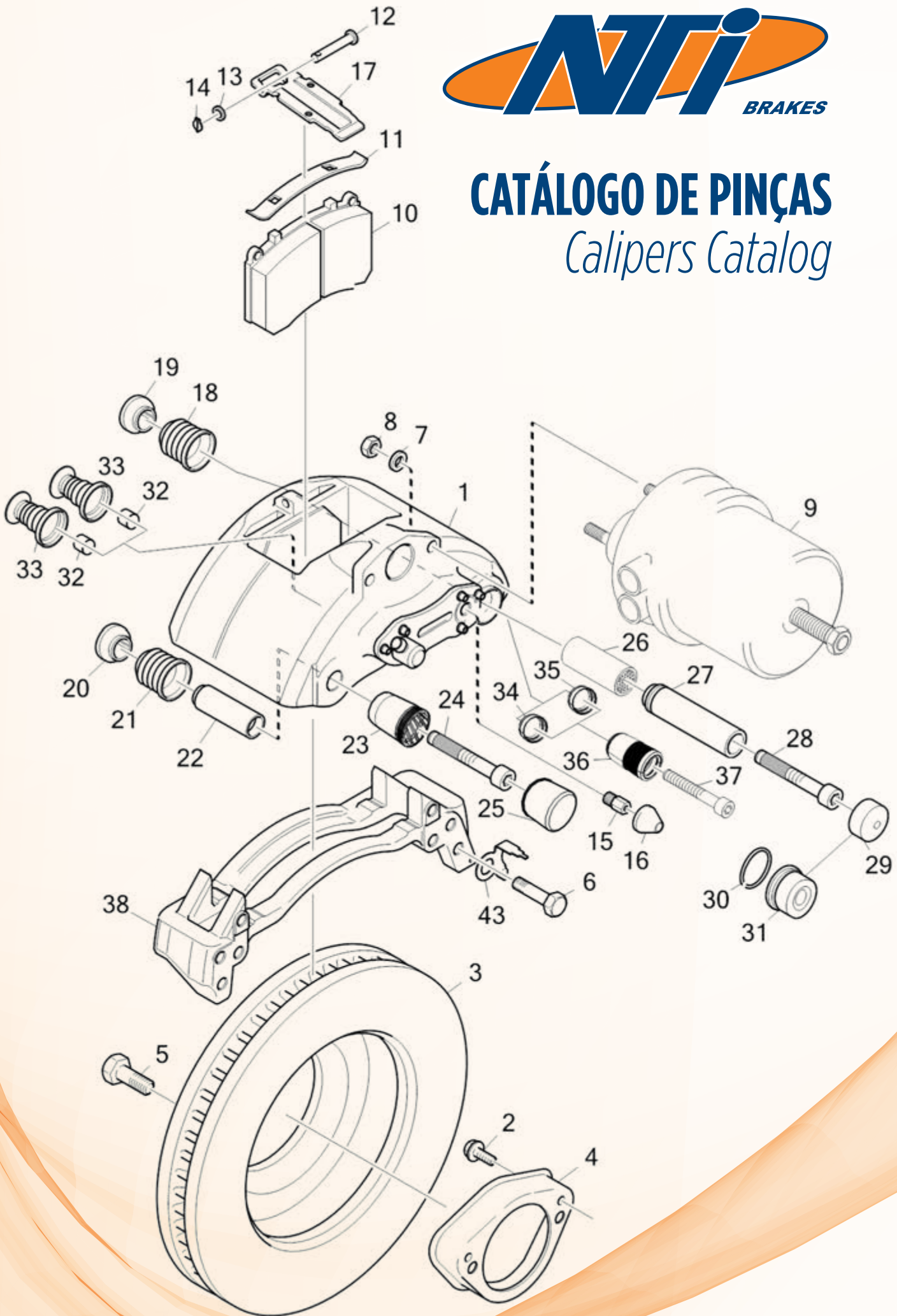




CATÁLOGO DE PINÇAS

Calipers Catalog



A Cipec iniciou suas atividades em 1983 na cidade de São Caetano como um pequeno distribuidor e fabricante de peças de reposição para caminhões e ônibus. Trabalhando com empenho e seriedade, a Cipec rapidamente ampliou seu leque de produtos de distribuição, alcançando logo em seguida o status de referência nacional no mercado de reposição da linha Scania.

Em 1999, devido ao ritmo crescente dos negócios, a estrutura da Cipec já não comportava a demanda, levando a empresa a transferir suas atividades para uma área de 20.000 m² em Indaiatuba, localizada estrategicamente no interior paulista. Nesse novo local, a empresa investiu fortemente na parte fabril e agregou as linhas Volvo, VW, MWM, Cummins e Iveco.

Com amplo espaço fabril e novos nichos de mercado se abrindo, em 2003 a Cipec inovou mais uma vez, implantando uma completa linha de servos de embreagem, válvulas e reparos de freios para linha pesada. Surgiu então a NTI, uma marca Cipec que em pouco tempo ficaria conhecida no mercado, oferecendo um produto competitivo e altamente confiável.

Atualmente, a Cipec conta com mais de 170 colaboradores e comercializa mais de 22.000 itens a partir de sua unidade fabril localizada em Indaiatuba, ampliando ainda mais sua capacidade de produção e expedindo mais de 30 toneladas de produtos por dia para mais de 50 países em todo o mundo.

Cipec began its activities in 1983 in the city of São Caetano as a small distributor and manufacturer of spare parts for trucks and buses. Working with dedication and seriousness, Cipec quickly expanded its range of distribution products and soon achieved national reference status in the replacement market for the Scania line.

By 1999, its structure could no longer accommodate the growing pace of business, prompting Cipec to transfer its operations to a 20,000 m² area in Indaiatuba, strategically located in the interior of São Paulo. Strong investments were made in the manufacturing sector, and the Volvo, VW, MWM, Cummins, and Iveco lines were added.

With ample manufacturing space and new market niches emerging, Cipec innovated once again in 2003, introducing a complete line of clutch servos, valves, and brake repair kits for heavy-duty applications. Thus, NTI was born, a Cipec brand that quickly became known in the market, offering competitive and highly reliable products.

Today, Cipec employs over 170 employees and sells over 22,000 items from its manufacturing facility located in Indaiatuba, further increasing its production capacity and shipping over 30 tons of products per day to more than 50 countries worldwide.

La Cipec inició sus actividades en 1983 en la ciudad de São Caetano como un pequeño distribuidor y fabricante de repuestos para camiones y autobuses. Trabajando con dedicación y seriedad, Cipec amplió rápidamente su gama de productos de distribución y pronto alcanzó el estatus de referencia nacional en el mercado de repuestos para la línea Scania.

Para 1999, su estructura ya no podía soportar el creciente ritmo de negocios, lo que llevó a Cipec a trasladar sus operaciones a una área de 20,000 m² en Indaiatuba, estratégicamente ubicada en el interior de São Paulo. Se realizaron fuertes inversiones en el sector manufacturero y se añadieron las líneas Volvo, VW, MWM, Cummins e Iveco.

Con un amplio espacio de fabricación y nuevos nichos de mercado emergentes, Cipec innovó una vez más en 2003, introduciendo una línea completa de servos de embrague, válvulas y reparaciones de frenos para aplicaciones de servicio pesado. Así nació NTI, una marca de Cipec que rápidamente se hizo conocida en el mercado, ofreciendo productos competitivos y altamente confiables.

Hoy en día, Cipec emplea a más de 170 trabajadores y vende más de 22,000 artículos desde su planta de fabricación ubicada en Indaiatuba, aumentando aún más su capacidad de producción y enviando más de 30 toneladas de productos al día a más de 50 países en todo el mundo.



PART TYPES INDEX



WABCO	03
PINCA	03
KNORR	08
PINCA	08
DIVERSOS	20
PINCA	20
CONTATOS	26
ÍNDICE REMISSIVO	27



WABCO	03
BRAKE CALIPER	03
KNORR	08
BRAKE CALIPER	08
DIVERSOS	20
BRAKE CALIPER	20
CONTACTS	26
PART NUMBER INDEX	27

WABCO: 0012956014

NTI: 023351 | WABCO: 0012956014



ACIONADOR PARCIAL PINCA 17.5
ACIONADOR PARCIAL PINCA 17.5
BRAKE CALIPER COMPLETE TORQUE



CALIPER - FREIO A DISCO
CALIPER - FREIO A DISCO
BRAKE DISC CALIPER

MERCEDES: 712C, 914C, LO914, LO915

WABCO: 20538832 VB

NTI: 024076 | WABCO: 20538832 VB



ACIONADOR PARCIAL PINCA 19,5
ACIONADOR PARCIAL PINCA 19,5
CALIPER SHAFT 19,50 WABCO TYPE



CALIPER - FREIO A DISCO
CALIPER - FREIO A DISCO
BRAKE DISC CALIPER

VOLVO: VM17, VM23

WABCO: 6884204801 A

NTI: 024073 | WABCO: 6884204801 A



ALAV. ACION. (PINCA 19,50)
ALAV. ACION. (PINCA 19,50)
CALIPER ACTION SHAFT 19,5



CALIPER - FREIO A DISCO
CALIPER - FREIO A DISCO
BRAKE DISC CALIPER

VOLVO: VM17, VM23

WABCO: 0040175077

NTI: 015987 | WABCO: 0040175077



EIXO INFERIOR REGULAGEM LISO 80.4
WABCO
EIXO INFERIOR REGULAGEM LISO 80.4
WABCO
LOWER FLAT ADJUSTING SHAFT 80.4



CALIPER - FREIO A DISCO
CALIPER - FREIO A DISCO
BRAKE DISC CALIPER

MERCEDES: 712C, 914C, LO914, LO915

WABCO: 6401750740

NTI: 015986 | WABCO: 6401750740, 6401750750, 6401750760, 6401750770



EIXO SUPERIOR REGULAGEM 80.4 WABCO
EIXO SUPERIOR REGULAGEM 80.4 WABCO
UPPER FLAT ADJUSTING SHAFT 80.4



CALIPER - FREIO A DISCO
CALIPER - FREIO A DISCO
BRAKE DISC CALIPER

MERCEDES: 712C, 914C, LO914, LO915 | VOLVO: VM17, VM23

WABCO: 0013227166

NTI: 023071 | NTI: 023726 | WABCO: 0013227166



GUARDA PO PINCA
GUARDA PO PINCA
CALIPER DUST BOOT



CALIPER - FREIO A DISCO
CALIPER - FREIO A DISCO
BRAKE DISC CALIPER

MERCEDES: 712C, 914C, LO914, LO915



WABCO: 6401759222 C NTI: 015985 | WABCO: 6401759222 C



JG. GUARDA PO REP. P/ 01 PINÇA 17,5 WABCO
 CALIPER REPAIR KIT - 01 17,5 CALIPER
 CALIPER REPAIR KIT - 01 17,5 WABCO



CALIPER - FREIO A DISCO
 CALIPER - FREIO A DISCO
 BRAKE DISC CALIPER

MERCEDES: 712C, 914C, LO914, LO915

WABCO: 0040175076 NTI: 016874 | WABCO: 0040175076



JG. ROLAMENTO PINÇA WABCO
 KIT RODAMIENTO CALIPER WABCO
 CALIPER BEARING SET



CALIPER - FREIO A DISCO
 CALIPER - FREIO A DISCO
 BRAKE DISC CALIPER

MERCEDES: 712C, 914C, LO914, LO915 | VOLVO: VM17, VM23

WABCO: 27018 NTI: 024107 | WABCO: 27018



JG. JUNTA PROTETOR 00132271.1/6+
 001382603.7
 JG. JUNTA PROTETOR 00132271.1/6+
 001382603.7
 PROTECTION GASKET KIT 00132271.1/6+
 001382603.7



CALIPER - FREIO A DISCO
 CALIPER - FREIO A DISCO
 BRAKE DISC CALIPER

MERCEDES: 712C, 914C, LO914, LO915 | VOLVO: VM17, VM23

WABCO: 20538832 VA NTI: 024068 | WABCO: 20538832 VA



KIT ARRUELA ACIONAMENTO (17,5/19,5) WABCO
 KIT ARRUELA ACIONAMENTO (17,5/19,5) WABCO
 WASHER KIT (17,5/19,5)



CALIPER - FREIO A DISCO
 CALIPER - FREIO A DISCO
 BRAKE DISC CALIPER

MERCEDES: 712C, 914C, LO914, LO915 | VOLVO: VM17, VM23

WABCO: 20502 NTI: 015990 | WABCO: 20502



KIT ARRUELAS E TRAVAS REGULADOR WABCO
 KIT ARRUELAS E TRAVAS REGULADOR WABCO
 WASHERS AND LOCKS REPAIR KIT



CALIPER - FREIO A DISCO
 CALIPER - FREIO A DISCO
 BRAKE DISC CALIPER

MERCEDES: 712C, 914C, LO914, LO915 | VOLVO: VM17, VM23

WABCO: 6884204901 NTI: 024109 | WABCO: 6884204901



KIT GUARDA PO ACIONADOR 17,5/19,5
 KIT GUARDA PO ACIONADOR 17,5/19,5
 DUST BOOT KIT 17,5/19,5



CALIPER - FREIO A DISCO
 CALIPER - FREIO A DISCO
 BRAKE DISC CALIPER

MERCEDES: 712C, 914C, LO914, LO915 | VOLVO: VM17, VM23

WABCO: 20501 | NTI: 015989 | WABCO: 20501



KIT MOLAS REGULADOR WABCO
KIT MOLAS REGULADOR WABCO
SPRINGS ADJUSTER KIT WABCO TYPE



CALIPER - FREIO A DISCO
CALIPER - FREIO A DISCO
BRAKE DISC CALIPER

MERCEDES: 712C, 914C, LO914, LO915 | VOLVO: VM17, VM23

WABCO: 6401759222 D | NTI: 015988 | WABCO: 6401759222 D



KIT REPARO BALANCIM PINCA WABCO 17,5/
19,5MM
ROCKER ARM CALIPER REPAIR KIT
CALIPER REPAIR KIT



CALIPER - FREIO A DISCO
CALIPER - FREIO A DISCO
BRAKE DISC CALIPER

MERCEDES: 712C, 914C, LO914, LO915 | VOLVO: VM17, VM23

WABCO: 0013230086 | NTI: 017576 | NTI: 023489 | WABCO: 0013230086



KIT TAMPA BAIXA PINCA =WABCO= 17,5MM
KIT TAMPA BAIXA PINCA =WABCO= 17,5MM
COVER KIT CALIPER LOWER WABCO



CALIPER - FREIO A DISCO
CALIPER - FREIO A DISCO
BRAKE DISC CALIPER

MERCEDES: 712C, 914C, LO914, LO915

WABCO: 20504 | NTI: 015996 | WABCO: 20504



PINO 109MM P/REP. PINCA WABCO
PINO 109MM P/REP. PINCA WABCO
PIN 109MM CALIPER REPAIR KIT



CALIPER - FREIO A DISCO
CALIPER - FREIO A DISCO
BRAKE DISC CALIPER

MERCEDES: 712C, 914C, LO914, LO915

WABCO: 20538832 VC | NTI: 025091 | WABCO: 20538832 VC



PLACA DE PRESSAO L.E. VM 19,5
PLACA DE PRESSAO L.E. VM 19,5
PRESSURE PLATE LH VM 19,5



CALIPER - FREIO A DISCO
CALIPER - FREIO A DISCO
BRAKE DISC CALIPER

VOLVO: VM17, VM23

WABCO: 20538833 VA | NTI: 024061 | NTI: 024299 | VOLVO: 20538833 VA



PLACA PRESSAO L.D. 19,5MM
PLACA PRESSAO L.D. 19,5MM
CALIPER 19,50 PRESSURE COVER RH



CALIPER - FREIO A DISCO
CALIPER - FREIO A DISCO
BRAKE DISC CALIPER

VOLVO: VM17, VM23



WABCO: 20538833 VB

NTI: 024062 | NTI: 024298 | VOLVO: 20538833 VB



PLACA PRESSAO L.E. 19,5MM
 PLACA PRESSAO L.E. 19,5MM
 CALIPER 19,50 PRESSURE COVER LH



CALIPER - FREIO A DISCO
 CALIPER - FREIO A DISCO
 BRAKE DISC CALIPER

VOLVO: VM17, VM23

WABCO: 20538833 RP

NTI: 025090 | WABCO: 20538833 RP



REP. PARCIAL PINCA 19.5 VM
 REP. PARCIAL PINCA 19.5 VM
 CALIPER PARTIAL REPAIR KIT VM



CALIPER - FREIO A DISCO
 CALIPER - FREIO A DISCO
 BRAKE DISC CALIPER

VOLVO: VM17, VM23

WABCO: 6129997762

NTI: 017574 | NTI: 023786 | WABCO: 6129997762



REP. PINCA C/ PINOS =WABCO=
 REP. PINCA C/ PINOS =WABCO=
 CALIPER REPAIR KIT W/ PINS WABCO TYPE



CALIPER - FREIO A DISCO
 CALIPER - FREIO A DISCO
 BRAKE DISC CALIPER

MERCEDES: 712C, 914C, LO914, LO915

WABCO: 20538833 R

NTI: 025089 | WABCO: 20538833 R



REP. PINCA COMPLETO. 19.5 VM
 REP. PINCA COMPLETO. 19.5 VM
 CALIPER REPAIR KIT COMPLETE



CALIPER - FREIO A DISCO
 CALIPER - FREIO A DISCO
 BRAKE DISC CALIPER

VOLVO: VM17, VM23

WABCO: 6401759222 A

NTI: 015983 | NTI: 015981, 023999, 024000 | WABCO: 6401759222 A, 8845030242 A, 8845035032 A



REP. PINCA WABCO P/ 01 PINCA PARCIAL
 CALIPER REPAIR KIT (01 CALIPER) - PARTIAL
 CALIPER REPAIR KIT WABCO (1 CALIPER)



CALIPER - FREIO A DISCO
 CALIPER - FREIO A DISCO
 BRAKE DISC CALIPER

MERCEDES: 712C, 914C, LO914, LO915

WABCO: 0013230109

NTI: 023070 | WABCO: 0013230109



TAMPA MAIOR
 TAMPA MAIOR
 BIGGER CAP



CALIPER - FREIO A DISCO
 CALIPER - FREIO A DISCO
 BRAKE DISC CALIPER

MERCEDES: 712C, 914C, LO914, LO915

WABCO: 0013230085 NTI: 023072 | WABCO: 0013230085



TAMPA MENOR
TAMPA MENOR
SMALLER CAP



CALIPER - FREIO A DISCO
CALIPER - FREIO A DISCO
BRAKE DISC CALIPER

MERCEDES: 712C, 914C, LO914, LO915

WABCO: 6884204801 NTI: 018166 | WABCO: 6884204801



TAMPA PRESSAO (PINCA 17,50) L.D. WABCO
TAMPA PRESSAO (PINCA 17,50) L.D. WABCO
CALIPER 17,50 PRESSURE COVER RH
WABCO TYPE



CALIPER - FREIO A DISCO
CALIPER - FREIO A DISCO
BRAKE DISC CALIPER

MERCEDES: 712C, 914C, LO914, LO915

WABCO: 6884204801 E NTI: 024063 | WABCO: 6884204801 E



TAMPA PRESSAO (PINCA 17,50) L.E. WABCO
TAMPA PRESSAO (PINCA 17,50) L.E. WABCO
CALIPER 17,50 PRESSURE COVER LH



CALIPER - FREIO A DISCO
CALIPER - FREIO A DISCO
BRAKE DISC CALIPER

MERCEDES: 712C, 914C, LO914, LO915



KNORR: K002872 X

NTI: 026656 | KNORR: K002872 X



REP. PINCA SN KNORR (COMPLETO)
 REP. PINCA SN KNORR (COMPLETO)
 CALIPER REPAIR KIT SN KNORR COMPLETE



CALIPER - FREIO A DISCO
 CALIPER - FREIO A DISCO
 BRAKE DISC CALIPER

MERCEDES: 1938S, 1944S, ACTROS 2542, ACTROS 2544, ACTROS 2546, ACTROS 2631, ACTROS 2644, ACTROS 2646, ACTROS 2648, ACTROS 2655, ACTROS 3529, ACTROS 4844, AXOR1933, AXOR2035, AXOR2040, AXOR2044, AXOR2533, AXOR2540, AXOR2544, AXOR2640, AXOR2644, AXOR2825, AXOR2828, AXOR3340, AXOR3344, AXOR4140, O500, O500 M, O500 U | SCANIA: 114, 124, 164, 94, K114, K124, K94, L94, P.G.R.

KNORR: 6884204801 B

NTI: 024074 | KNORR: 6884204801 B



ALAV. ACION. SN5000
 ALAV. ACION. SN5000
 SHAFT SN 5000 WABCO TYPE



CALIPER - FREIO A DISCO
 CALIPER - FREIO A DISCO
 BRAKE DISC CALIPER

MERCEDES: ACCELO1016, ACCELO915C

KNORR: 24550

NTI: 024087 | KNORR: 24550



ALAV. ACIONAMENTO 0500 (84MM)
 ALAV. ACIONAMENTO 0500 (84MM)
 ACTION SHAFT 0500 (84MM)



CALIPER - FREIO A DISCO
 CALIPER - FREIO A DISCO
 BRAKE DISC CALIPER

MERCEDES: 1938S, 1944S, ACTROS 2542, ACTROS 2544, ACTROS 2546, ACTROS 2631, ACTROS 2644, ACTROS 2646, ACTROS 2648, ACTROS 2655, ACTROS 3529, ACTROS 4844, AXOR1933, AXOR2035, AXOR2040, AXOR2044, AXOR2533, AXOR2540, AXOR2544, AXOR2640, AXOR2644, AXOR2825, AXOR2828, AXOR3340, AXOR3344, AXOR4140, O-500 (2.EIXO), O500, O500 M, O500 U | SCANIA: 114, 124, 164, 94, K114, K124, K94, L94, P.G.R.

KNORR: 24590

NTI: 024077 | KNORR: 24590



ALAV. ACIONAMENTO 0500 (93MM)
 ALAV. ACIONAMENTO 0500 (93MM)
 ACTION SHAFT 0500 (93MM)



CALIPER - FREIO A DISCO
 CALIPER - FREIO A DISCO
 BRAKE DISC CALIPER

MERCEDES: 1938S, 1944S, ACTROS 2542, ACTROS 2544, ACTROS 2546, ACTROS 2631, ACTROS 2644, ACTROS 2646, ACTROS 2648, ACTROS 2655, ACTROS 3529, ACTROS 4844, AXOR1933, AXOR2035, AXOR2040, AXOR2044, AXOR2533, AXOR2540, AXOR2544, AXOR2640, AXOR2644, AXOR2825, AXOR2828, AXOR3340, AXOR3344, AXOR4140, O-500 (2.EIXO), O500, O500 M, O500 U | SCANIA: 114, 124, 164, 94, K114, K124, K94, L94, P.G.R.

KNORR: 27013

NTI: 023799 | KNORR: 27013



BUCHA ALAVANCA ACION. 22.5
 BUCHA ALAVANCA ACION. 22.5
 BUSHING SHAFT ACION 22.5



CALIPER - FREIO A DISCO
 CALIPER - FREIO A DISCO
 BRAKE DISC CALIPER

MERCEDES: 1938S, 1944S, ACTROS 2542, ACTROS 2544, ACTROS 2546, ACTROS 2631, ACTROS 2644, ACTROS 2646, ACTROS 2648, ACTROS 2655, ACTROS 3529, ACTROS 4844, AXOR1933, AXOR2035, AXOR2040, AXOR2044, AXOR2533, AXOR2540, AXOR2544, AXOR2640, AXOR2644, AXOR2825, AXOR2828, AXOR3340, AXOR3344, AXOR4140, O500, O500 M, O500 U | SCANIA: 114, 124, 164, 94, K114, K124, K94, L94, P.G.R.



KNORR: C56519

NTI: 016864 | KNORR: C56519


 BUCHA PINO MAIOR PINCA KNORR
 BUCHA PINO MAIOR PINCA KNORR
 BUSHING CALIPER KNORR

 CALIPER - FREIO A DISCO
 CALIPER - FREIO A DISCO
 BRAKE DISC CALIPER

MERCEDES: 1938S, 1944S, ACCELO915C, ACTROS 2542, ACTROS 2544, ACTROS 2546, ACTROS 2631, ACTROS 2644, ACTROS 2646, ACTROS 2648, ACTROS 2655, ACTROS 3529, ACTROS 4844, AXOR1933, AXOR2035, AXOR2040, AXOR2044, AXOR2533, AXOR2540, AXOR2544, AXOR2640, AXOR2644, AXOR2825, AXOR2828, AXOR3340, AXOR3344, AXOR4140, O500, O500 M, O500 U, O500 UA | SCANIA: 114, 124, 164, 94, K114, K124, K94, L94, P.G.R.

KNORR: 30026

NTI: 024080 | KNORR: 30026


 BUCHA SAPATA
 BUCHA SAPATA
 BRAKE SHOE BUSHING

 CALIPER - FREIO A DISCO
 CALIPER - FREIO A DISCO
 BRAKE DISC CALIPER

MERCEDES: 1938S, 1944S, ACTROS 2542, ACTROS 2544, ACTROS 2546, ACTROS 2631, ACTROS 2644, ACTROS 2646, ACTROS 2648, ACTROS 2655, ACTROS 3529, ACTROS 4844, AXOR1933, AXOR2035, AXOR2040, AXOR2044, AXOR2533, AXOR2540, AXOR2544, AXOR2640, AXOR2644, AXOR2825, AXOR2828, AXOR3340, AXOR3344, AXOR4140, O500, O500 M, O500 M A PARTIR 2003, O500 U, O500 U APARTIR DE 2003 | SCANIA: 114, 124, 164, 94, K114, K124, K94, L94, P.G.R.

KNORR: SB6000

NTI: 014933 | KNORR: SB6000


 COROA DENTADA KNORR
 CORONA DENTADA
 CROWN KNORR

 CALIPER - FREIO A DISCO
 CALIPER - FREIO A DISCO
 BRAKE DISC CALIPER

MERCEDES: 1938S, 1944S, ACCELO915C, ACTROS 2542, ACTROS 2544, ACTROS 2546, ACTROS 2631, ACTROS 2644, ACTROS 2646, ACTROS 2648, ACTROS 2655, ACTROS 3529, ACTROS 4844, AXOR1933, AXOR2035, AXOR2040, AXOR2044, AXOR2533, AXOR2540, AXOR2544, AXOR2640, AXOR2644, AXOR2825, AXOR2828, AXOR3340, AXOR3344, AXOR4140, LS1938, O500, O500 M, O500 U | SCANIA: 114, 124, 164, 94, F94, K114, K124, K94, L94, P.G.R.

KNORR: A9704204001 B

NTI: 024092 | KNORR: A9704204001 B


 CORPO ACIONAM.PRIMARIO ACCELO SB5000
 CORPO ACIONAM.PRIMARIO ACCELO SB5000
 PRIMERY ARMITURE SB5000

 CALIPER - FREIO A DISCO
 CALIPER - FREIO A DISCO
 BRAKE DISC CALIPER

MERCEDES: ACCELO915C

KNORR: 9704204001 A

NTI: 024091 | KNORR: 9704204001 A


 CORPO ACIONAM.SECUNDARIO ACCELO SN5000
 CORPO ACIONAM.SECUNDARIO ACCELO SN5000
 SECONDARY ARMITURE SB5000

 CALIPER - FREIO A DISCO
 CALIPER - FREIO A DISCO
 BRAKE DISC CALIPER

MERCEDES: ACCELO915C



KNORR: 24100

NTI: 023371 | KNORR: 24100



CORRENTE REGUL. PINCA 12 ELOS ACCELO
CORRENTE REGUL. PINCA 12 ELOS ACCELO
BRAKE CALIPER CHAIN 12 LINKS



CALIPER - FREIO A DISCO
CALIPER - FREIO A DISCO
BRAKE DISC CALIPER

MERCEDES: ACCELO915C

KNORR: SN5000

NTI: 017582 | KNORR: SN5000



CORRENTE REGUL. PINCA 14 ELOS ACCELO 915
CORRENTE REGUL. PINCA 14 ELOS ACCELO 915
CALIPER CHAIN ACELO 915



CALIPER - FREIO A DISCO
CALIPER - FREIO A DISCO
BRAKE DISC CALIPER

MERCEDES: ACCELO915C

KNORR: SB7000

NTI: 014936 | KNORR: SB7000, SN6000



CORRENTE REGUL. PINCA 29 ELOS
CORRENTE REGUL. PINCA 29 ELOS
CALIPER CHAIN



CALIPER - FREIO A DISCO
CALIPER - FREIO A DISCO
BRAKE DISC CALIPER

MERCEDES: 1938S, 1944S, 1944S-A PARTIR 2003, ACCELO915C, ACTROS 2542, ACTROS 2544, ACTROS 2546, ACTROS 2631, ACTROS 2644, ACTROS 2646, ACTROS 2648, ACTROS 2655, ACTROS 3529, ACTROS 4844, AXOR1933, AXOR1933 S, AXOR2035, AXOR2040, AXOR2044, AXOR2533, AXOR2540, AXOR2544, AXOR2640, AXOR2644, AXOR2825, AXOR2828, AXOR3340, AXOR3344, AXOR4140, LS1938 - ATE 2003, O500, O500 M, O500 M A PARTIR 2003, O500 TODOS, O500 U, O500 U A PARTIR DE 2003
| SCANIA: 114, 124, 164, 94, K114, K124, K94, L94, P.G.R.

KNORR: II19712004

NTI: 015980 | KNORR: C54852, II19712004, Z009036



GRAMPO PASTILHA REP. PINCA KNORR
GRAMPO PASTILHA REP. PINCA KNORR
PAD RETAINER REPAIR KIT CALIPER KNORR



CALIPER - FREIO A DISCO
CALIPER - FREIO A DISCO
BRAKE DISC CALIPER

MERCEDES: 1938S, 1944S, ACCELO915C, ACTROS 2542, ACTROS 2544, ACTROS 2546, ACTROS 2631, ACTROS 2644, ACTROS 2646, ACTROS 2648, ACTROS 2655, ACTROS 3529, ACTROS 4844, AXOR1933, AXOR2035, AXOR2040, AXOR2044, AXOR2533, AXOR2540, AXOR2544, AXOR2640, AXOR2644, AXOR2825, AXOR2828, AXOR3340, AXOR3344, AXOR4140, LS1938, O500, O500 M, O500 U | SCANIA: 114, 124, 164, 94, F94, K114, K124, K94, L94, P.G.R.

KNORR: A9704203901

NTI: 023790 | KNORR: A9704203901



GUARDA PO DISCO ACCELO
GUARDA PO DISCO ACCELO
BRAKE DISC DUST BOOT ACCELO



CALIPER - FREIO A DISCO
CALIPER - FREIO A DISCO
BRAKE DISC CALIPER

MERCEDES: ACCELO915C



KNORR: C62758

NTI: 016758 | KNORR: C62758


 GUARDA PO SILICONE VERMELHO KNORR
 GUARDA PO SILICONE VERMELHO KNORR
 RED DUST BOOT SILICONE MADE

 CALIPER - FREIO A DISCO
 CALIPER - FREIO A DISCO
 BRAKE DISC CALIPER

MERCEDES: 1938LS, 1938S, 1944S, ACCELO915C, ACTROS 2542, ACTROS 2544, ACTROS 2546, ACTROS 2631, ACTROS 2644, ACTROS 2646, ACTROS 2648, ACTROS 2655, ACTROS 3529, ACTROS 4844, AXOR1933, AXOR2035, AXOR2040, AXOR2044, AXOR2533, AXOR2540, AXOR2544, AXOR2640, AXOR2644, AXOR2825, AXOR2828, AXOR3340, AXOR3344, AXOR4140, LS1622, LS1938, O500, O500 M, O500 U | SCANIA: 114, 124, 164, 94, K114, K124, K94, L94, P.G.R.

KNORR: Z000805+000810

NTI: 016757 | KNORR: Z000805+000810


 KIT BUCHAS PINCA KNORR
 KIT BUCHAS PINCA KNORR
 CALIPER BUSHINGS KIT KNORR

 CALIPER - FREIO A DISCO
 CALIPER - FREIO A DISCO
 BRAKE DISC CALIPER

MERCEDES: 1938S, 1944S, ACCELO915C, ACTROS 2542, ACTROS 2544, ACTROS 2546, ACTROS 2631, ACTROS 2644, ACTROS 2646, ACTROS 2648, ACTROS 2655, ACTROS 3529, ACTROS 4844, AXOR1933, AXOR2035, AXOR2040, AXOR2044, AXOR2533, AXOR2540, AXOR2544, AXOR2640, AXOR2644, AXOR2825, AXOR2828, AXOR3340, AXOR3344, AXOR4140, O500, O500 M, O500 M A PARTIR 2003, O500 U, O500 U APARTIR DE 2003 | SCANIA: 114, 124, 164, 94, K114, K124, K94, L94, P.G.R.

KNORR: SB5000

NTI: 014938 | KNORR: SB5000


 KIT ROLAMENTO REPARO PINCA
 KIT ROLAMENTO REPARO PINCA
 CALIPER BEARING KIT

 CALIPER - FREIO A DISCO
 CALIPER - FREIO A DISCO
 BRAKE DISC CALIPER

MERCEDES: 1938S, 1944S, 1944S-A PARTIR 2003, ACTROS 2542, ACTROS 2544, ACTROS 2546, ACTROS 2631, ACTROS 2644, ACTROS 2646, ACTROS 2648, ACTROS 2655, ACTROS 3529, ACTROS 4844, AXOR1933, AXOR1933 S, AXOR2035, AXOR2040, AXOR2044, AXOR2533, AXOR2540, AXOR2544, AXOR2640, AXOR2644, AXOR2825, AXOR2828, AXOR3340, AXOR3344, AXOR4140, LS1938 - ATE 2003, O500, O500 M, O500 M A PARTIR 2003, O500 TODOS, O500 U, O500 U APARTIR DE 2003 | SCANIA: 114, 124, 164, 94, K114, K124, K94, L94, P.G.R.

KNORR: A9704204001 R

NTI: 025075 | KNORR: A9704204001 R


 KIT ROLAMENTOS ACCELO SN5000
 KIT ROLAMENTOS ACCELO SN5000
 CALIPER BEARING KIT

 CALIPER - FREIO A DISCO
 CALIPER - FREIO A DISCO
 BRAKE DISC CALIPER

MERCEDES: ACCELO1016, ACCELO915C

KNORR: A9704204001

NTI: 017579 | KNORR: A9704204001


 MECANISMO AJUSTE PRIMARIA ACCELO 915
 MECANISMO AJUSTE PRIMARIA ACCELO 915
 PRIMARY ADJUSTING MECHANISM

 CALIPER - FREIO A DISCO
 CALIPER - FREIO A DISCO
 BRAKE DISC CALIPER

MERCEDES: ACCELO915C



KNORR: SB006

NTI: 014930 | KNORR: SB006



MECANISMO AJUSTE PRINCIPAL
MECANISMO AJUSTE PRINCIPAL
CALIPER MAIN ADJUSTING MECHANISM



CALIPER - FREIO A DISCO
CALIPER - FREIO A DISCO
BRAKE DISC CALIPER

MERCEDES: 1938S, 1944S, ACTROS 2542, ACTROS 2544, ACTROS 2546, ACTROS 2631, ACTROS 2644, ACTROS 2646, ACTROS 2648, ACTROS 2655, ACTROS 3529, ACTROS 4844, AXOR1933, AXOR2035, AXOR2040, AXOR2044, AXOR2533, AXOR2540, AXOR2544, AXOR2640, AXOR2644, AXOR2825, AXOR2828, AXOR3340, AXOR3344, AXOR4140, LS1938, O500, O500 M, O500 U | SCANIA: 114, 124, 164, 94, F94, K114, K124, K94, L94, P.G.R.

KNORR: II36689

NTI: 014931 | KNORR: 1517008, II36689, II36690



MECANISMO AJUSTE SECUNDARIO
MECANISMO AJUSTE SECUNDARIO
SECONDARY ADJUSTING MECHANISM



CALIPER - FREIO A DISCO
CALIPER - FREIO A DISCO
BRAKE DISC CALIPER

MERCEDES: 1938S, 1944S, ACTROS 2542, ACTROS 2544, ACTROS 2546, ACTROS 2631, ACTROS 2644, ACTROS 2646, ACTROS 2648, ACTROS 2655, ACTROS 3529, ACTROS 4844, AXOR1933, AXOR2035, AXOR2040, AXOR2044, AXOR2533, AXOR2540, AXOR2544, AXOR2640, AXOR2644, AXOR2825, AXOR2828, AXOR3340, AXOR3344, AXOR4140, LS1938, O500, O500 M, O500 U | SCANIA: 114, 124, 164, 94, F94, K114, K124, K94, L94, P.G.R.

KNORR: A9794200101

NTI: 017580 | KNORR: A9794200101



MECANISMO AJUSTE SECUNDARIO ACCELO 915
MECANISMO AJUSTE SECUNDARIO ACCELO 915
SECONDARY ADJUSTING MECHANISM



CALIPER - FREIO A DISCO
CALIPER - FREIO A DISCO
BRAKE DISC CALIPER

MERCEDES: ACCELO915C

KNORR: K051689

NTI: 023788 | KNORR: K051689



MECANISMO SECUNDARIO
MECANISMO SECUNDARIO
SECONDARY MECHANISM



CALIPER - FREIO A DISCO
CALIPER - FREIO A DISCO
BRAKE DISC CALIPER

MERCEDES: 1938S, 1944S, ACTROS 2542, ACTROS 2544, ACTROS 2546, ACTROS 2631, ACTROS 2644, ACTROS 2646, ACTROS 2648, ACTROS 2655, ACTROS 3529, ACTROS 4844, AXOR1933, AXOR2035, AXOR2040, AXOR2044, AXOR2533, AXOR2540, AXOR2544, AXOR2640, AXOR2644, AXOR2825, AXOR2828, AXOR3340, AXOR3344, AXOR4140, O500, O500 M, O500 U | SCANIA: 114, 124, 164, 94, K114, K124, K94, L94, P.G.R.

KNORR: C72884

NTI: 016873 | KNORR: C72884



PARAF. M 16X75 PINO MENOR
PARAF. M 16X75 PINO MENOR
CALIPER BOLT (FOR SMALL PIN)



CALIPER - FREIO A DISCO
CALIPER - FREIO A DISCO
BRAKE DISC CALIPER

MERCEDES: 1938S, 1944S, ACCELO915C, ACTROS 2542, ACTROS 2544, ACTROS 2546, ACTROS 2631, ACTROS 2644, ACTROS 2646, ACTROS 2648, ACTROS 2655, ACTROS 3529, ACTROS 4844, AXOR1933, AXOR2035, AXOR2040, AXOR2044, AXOR2533, AXOR2540, AXOR2544, AXOR2640, AXOR2644, AXOR2825, AXOR2828, AXOR3340, AXOR3344, AXOR4140, LS1622, LS1938, O500, O500 M, O500 U | SCANIA: 114, 124, 164, 94, K114, K124, K94, L94, P.G.R.



KNORR: C71606

NTI: 016872 | KNORR: C71606


 PARAF. M16X85 PINO MAIOR
 PARAF. M16X85 PINO MAIOR
 CALIPER SCREW

 CALIPER - FREIO A DISCO
 CALIPER - FREIO A DISCO
 BRAKE DISC CALIPER

MERCEDES: 1938S, 1944S, ACCELO915C, ACTROS 2542, ACTROS 2544, ACTROS 2546, ACTROS 2631, ACTROS 2644, ACTROS 2646, ACTROS 2648, ACTROS 2655, ACTROS 3529, ACTROS 4844, AXOR1933, AXOR2035, AXOR2040, AXOR2044, AXOR2533, AXOR2540, AXOR2544, AXOR2640, AXOR2644, AXOR2825, AXOR2828, AXOR3340, AXOR3344, AXOR4140, LS1622, LS1938, O500, O500 M, O500 U | SCANIA: 114, 124, 164, 94, K114, K124, K94, L94, P.G.R.

KNORR: II36691

NTI: 014932 | KNORR: II36691


 PARAF. REGUL. PINCA COMPR. 13,5MM =
 KNORR=
 PARAF. REGUL. PINCA COMPR. 13,5MM =
 KNORR=
 CALIPER BOLT REGULATOR

 CALIPER - FREIO A DISCO
 CALIPER - FREIO A DISCO
 BRAKE DISC CALIPER

MERCEDES: 1938S, 1944S, ACCELO915C, ACTROS 2542, ACTROS 2544, ACTROS 2546, ACTROS 2631, ACTROS 2644, ACTROS 2646, ACTROS 2648, ACTROS 2655, ACTROS 3529, ACTROS 4844, AXOR1933, AXOR2035, AXOR2040, AXOR2044, AXOR2533, AXOR2540, AXOR2544, AXOR2640, AXOR2644, AXOR2825, AXOR2828, AXOR3340, AXOR3344, AXOR4140, LS1938, O500, O500 M, O500 U | SCANIA: 114, 124, 164, 94, F94, K114, K124, K94, L94, P.G.R.

KNORR: SK7000

NTI: 023354 | KNORR: SK7000


 PARAF. REGUL. PINCA COMPR. 9.5MM =
 KNORR=
 PARAF. REGUL. PINCA COMPR. 9.5MM =
 KNORR=
 CALIPER BOLT REGULATOR 9.5MM

 CALIPER - FREIO A DISCO
 CALIPER - FREIO A DISCO
 BRAKE DISC CALIPER

MERCEDES: 1938S, 1944S, ACTROS 2542, ACTROS 2544, ACTROS 2546, ACTROS 2631, ACTROS 2644, ACTROS 2646, ACTROS 2648, ACTROS 2655, ACTROS 3529, ACTROS 4844, ACTROS TODOS, AXOR1933, AXOR2035, AXOR2040, AXOR2044, AXOR2533, AXOR2540, AXOR2544, AXOR2640, AXOR2644, AXOR2825, AXOR2828, AXOR3340, AXOR3344, AXOR4140, O500, O500 M, O500 U | SCANIA: 114, 124, 164, 94, K114, K124, K94, L94, P.G.R.

KNORR: 27012

NTI: 023798 | KNORR: 27012


 PARAF. TAMPA PINCA
 PARAF. TAMPA PINCA
 CALIPER BOLT COVER

 CALIPER - FREIO A DISCO
 CALIPER - FREIO A DISCO
 BRAKE DISC CALIPER

MERCEDES: 1938S, 1944S, ACCELO915C, ACTROS 2542, ACTROS 2544, ACTROS 2546, ACTROS 2631, ACTROS 2644, ACTROS 2646, ACTROS 2648, ACTROS 2655, ACTROS 3529, ACTROS 4844, AXOR1933, AXOR2035, AXOR2040, AXOR2044, AXOR2533, AXOR2540, AXOR2544, AXOR2640, AXOR2644, AXOR2825, AXOR2828, AXOR3340, AXOR3344, AXOR4140, O500, O500 M, O500 U | SCANIA: 114, 124, 164, 94, K114, K124, K94, L94, P.G.R.

KNORR: Z000810

NTI: 027095 | KNORR: Z000810


 PINO GUIA PINCA
 PINO GUIA PINCA
 CALIPER GUIDE PIN

 CALIPER - FREIO A DISCO
 CALIPER - FREIO A DISCO
 BRAKE DISC CALIPER

MERCEDES: 1938S, 1944S, ACTROS 2542, ACTROS 2544, ACTROS 2546, ACTROS 2631, ACTROS 2644, ACTROS 2646, ACTROS 2648, ACTROS 2655, ACTROS 3529, ACTROS 4844, AXOR1933, AXOR2035, AXOR2040, AXOR2044, AXOR2533, AXOR2540, AXOR2544, AXOR2640, AXOR2644, AXOR2825, AXOR2828, AXOR3340, AXOR3344, AXOR4140, O500, O500 M, O500 M A PARTIR 2003, O500 U, O500 U A PARTIR DE 2003 | SCANIA: 114, 124, 164, 94, K114, K124, K94, L94, P.G.R.



KNORR: K001915

NTI: 016866 | KNORR: K001915



PINO MAIOR PINCA KNORR 36X114MM
 PINO MAIOR PINCA KNORR 36X114MM
 CALIPER BIGGER PIN 36X114MM



CALIPER - FREIO A DISCO
 CALIPER - FREIO A DISCO
 BRAKE DISC CALIPER

MERCEDES: 1938S, 1944S, 1944S-A PARTIR 2003, ACCELO915C, ACTROS 2542, ACTROS 2544, ACTROS 2546, ACTROS 2631, ACTROS 2644, ACTROS 2646, ACTROS 2648, ACTROS 2655, ACTROS 3529, ACTROS 4844, AXOR1933, AXOR1933 S, AXOR2035, AXOR2040, AXOR2044, AXOR2533, AXOR2540, AXOR2544, AXOR2640, AXOR2644, AXOR2825, AXOR2828, AXOR3340, AXOR3344, AXOR4140, LS1938 - ATE 2003, O-500 ARTICULADO, O-500 URBANO, O-500M-A PARTIR 2003, O-500U-A PARTIR 2003, O500, O500 M, O500 U | SCANIA: 114, 124, 164, 94, K114, K124, K94, L94, P.G.R.

KNORR: K001470

NTI: 016756 | KNORR: K001470 | NTI: 021502



REP. GUIAS E JUNTAS PINCA KNORR
 REPARACION GUIAS Y JUNTAS
 CALIPER REPAIR KIT



CALIPER - FREIO A DISCO
 CALIPER - FREIO A DISCO
 BRAKE DISC CALIPER

MERCEDES: 1938S, 1944S, ACTROS 2542, ACTROS 2544, ACTROS 2546, ACTROS 2631, ACTROS 2644, ACTROS 2646, ACTROS 2648, ACTROS 2655, ACTROS 3529, ACTROS 4844, AXOR1933, AXOR2035, AXOR2040, AXOR2044, AXOR2533, AXOR2540, AXOR2544, AXOR2640, AXOR2644, AXOR2825, AXOR2828, AXOR3340, AXOR3344, AXOR4140, O500, O500 M, O500 M A PARTIR 2003, O500 U, O500 U APARTIR DE 2003, O500 UA | SCANIA: 114, 124, 164, 94, K114, K124, K94, L94, P.G.R.

KNORR: A6964205301

NTI: 025078 | KNORR: A6964205301 | NTI: 025079



REP. PARCIAL GUIAS E JUNTAS SN6000/7000
 REP. PARCIAL GUIAS E JUNTAS SN6000/7000
 CALIPER PARTIAL REPAIR KIT WITH GASKET



CALIPER - FREIO A DISCO
 CALIPER - FREIO A DISCO
 BRAKE DISC CALIPER

MERCEDES: 1938S, 1944S, 1944S-A PARTIR 2003, ACTROS 2542, ACTROS 2544, ACTROS 2546, ACTROS 2631, ACTROS 2644, ACTROS 2646, ACTROS 2648, ACTROS 2655, ACTROS 3529, ACTROS 4844, AXOR1933, AXOR1933 S, AXOR2035, AXOR2040, AXOR2044, AXOR2533, AXOR2540, AXOR2544, AXOR2640, AXOR2644, AXOR2825, AXOR2828, AXOR3340, AXOR3344, AXOR4140, LS1938 - ATE 2003, O500, O500 M, O500 TODOS, O500 U | SCANIA: 114, 124, 164, 94, F/K/N ONIBUS, K114, K124, K94, L94, P.G.R.

KNORR: K010603

NTI: 014928 | KNORR: K010603 | NTI: 023418, 023633



REP. PARCIAL SAPATA KNORR =69MM=
 REP. PARCIAL SAPATA KNORR =69MM=
 CALIPER SHOE REPAIR KIT SN 69MM



CALIPER - FREIO A DISCO
 CALIPER - FREIO A DISCO
 BRAKE DISC CALIPER

MERCEDES: 1622, 1938S, 1944S, ACTROS 2542, ACTROS 2544, ACTROS 2546, ACTROS 2631, ACTROS 2644, ACTROS 2646, ACTROS 2648, ACTROS 2655, ACTROS 3529, ACTROS 4844, AXOR1933, AXOR2035, AXOR2040, AXOR2044, AXOR2533, AXOR2540, AXOR2544, AXOR2640, AXOR2644, AXOR2825, AXOR2828, AXOR3340, AXOR3344, AXOR4140, AXOR4144, LS1938, O500, O500 M, O500 R, O500 RS, O500 RSD, O500 U | SCANIA: 114, 124, 164, 94, K114, K124, K94, L94, P.G.R.

KNORR: A0004230316

NTI: 027263 | MERCEDES: 0004230316, A0004230316 | NTI: 027262



REP. PARCIAL SAPATA KNORR =69MM= C/
 DISCO MENOR
 REP. PARCIAL SAPATA KNORR =69MM= C/
 DISCO MENOR
 CALIPER TAPPET REPAIR KIT MBB



CALIPER - FREIO A DISCO
 CALIPER - FREIO A DISCO
 BRAKE DISC CALIPER

DIVERSOS: - | MERCEDES: 1938S, 1944S, ACTROS, ACTROS 2542, ACTROS 2544, ACTROS 2546, ACTROS 2631, ACTROS 2644, ACTROS 2646, ACTROS 2648, ACTROS 2655, ACTROS 3529, ACTROS 4844, AXOR, AXOR1933, AXOR2035, AXOR2040, AXOR2044, AXOR2533, AXOR2540, AXOR2544, AXOR2640, AXOR2644, AXOR2825, AXOR2828, AXOR3340, AXOR3344, AXOR4140, O500, O500 M, O500 U | SCANIA: 114, 124, 164, 94, K114, K124, K94, L94, P.G.R.



KNORR: K000944

NTI: 014935 | KNORR: K000944, K010604 | NTI: 023445, 023823


 REP. PINCA =74MM= (PARCIAL)
 REP. PINCA =74MM= (PARCIAL)
 CALIPER REPAIR KIT 74MM

 CALIPER - FREIO A DISCO
 CALIPER - FREIO A DISCO
 BRAKE DISC CALIPER

MERCEDES: 1938S, 1944S, ACTROS 2542, ACTROS 2544, ACTROS 2546, ACTROS 2631, ACTROS 2644, ACTROS 2646, ACTROS 2648, ACTROS 2655, ACTROS 3529, ACTROS 4844, AXOR1933, AXOR2035, AXOR2040, AXOR2044, AXOR2533, AXOR2540, AXOR2544, AXOR2640, AXOR2644, AXOR2825, AXOR2828, AXOR3340, AXOR3344, AXOR4140, LS1622, LS1938, O500, O500 M, O500 U | SCANIA: 114, 124, 164, 94, K114, K124, K94, L94, P.G.R.

KNORR: II40677F

NTI: 016862 | KNORR: II40677F


 REP. PINCA ACCELO (SAPATA)
 REP. PINCA ACCELO (SAPATA)
 CALIPER BOOT

 CALIPER - FREIO A DISCO
 CALIPER - FREIO A DISCO
 BRAKE DISC CALIPER

MERCEDES: ACCELO915C

KNORR: K001928

NTI: 023352 | KNORR: K001928 | NTI: 023756


 REP. PINCA ACCELO 915 (COMPLETO)
 REP. PINCA ACCELO 915 (COMPLETO)
 CALIPER REPAIR KIT ACCELO 915

 CALIPER - FREIO A DISCO
 CALIPER - FREIO A DISCO
 BRAKE DISC CALIPER

MERCEDES: ACCELO915C

KNORR: K001928 P

NTI: 023802 | KNORR: K001928 P | NTI: 024132


 REP. PINCA ACCELO SN5000
 REP. PINCA ACCELO SN5000
 PARTIAL REPAIR KIT ACCELO SN5000

 CALIPER - FREIO A DISCO
 CALIPER - FREIO A DISCO
 BRAKE DISC CALIPER

MERCEDES: ACCELO915C

KNORR: K002872

NTI: 014934 | KNORR: K002872 | NTI: 023391, 023392


 REP. PINCA SN KNORR (COMPLETO)
 REP. PINCA SN KNORR (COMPLETO)
 CALIPER REPAIR KIT SN KNORR COMPLETE

 CALIPER - FREIO A DISCO
 CALIPER - FREIO A DISCO
 BRAKE DISC CALIPER

MERCEDES: 1622, 1938S, 1944S, ACTROS 2542, ACTROS 2544, ACTROS 2546, ACTROS 2631, ACTROS 2644, ACTROS 2646, ACTROS 2648, ACTROS 2655, ACTROS 3529, ACTROS 4844, AXOR1933, AXOR2035, AXOR2035 S, AXOR2040, AXOR2040 S, AXOR2044, AXOR2533, AXOR2540, AXOR2544, AXOR2544 S, AXOR2640, AXOR2644, AXOR2644 S, AXOR2825, AXOR2828, AXOR3340, AXOR3340 S, AXOR3344, AXOR4140, LS1622, LS1938, O500, O500 M, O500 R, O500 RS, O500 RSD, O500 U | SCANIA: 114, 124, 164, 94, K114, K124, K94, L94, P.G.R.



KNORR: K031844K50

NTI: 026923 | KNORR: K031844K50



REPARO PINCA PARCIAL =KNORR=
REPARO PINCA PARCIAL =KNORR=
PARCIAL CALIPER REPAIR KIT KNORR TYPE



CALIPER - FREIO A DISCO
CALIPER - FREIO A DISCO
BRAKE DISC CALIPER

MERCEDES: 1938S, 1944S, ACTROS 2542, ACTROS 2544, ACTROS 2546, ACTROS 2631, ACTROS 2644, ACTROS 2646, ACTROS 2648, ACTROS 2655, ACTROS 3529, ACTROS 4844, AXOR1933, AXOR2035, AXOR2040, AXOR2044, AXOR2533, AXOR2540, AXOR2544, AXOR2640, AXOR2644, AXOR2825, AXOR2828, AXOR3340, AXOR3344, AXOR4140, O500, O500 M, O500 U | SCANIA: 114, 124, 164, 94, K114, K124, K94, L94, P.G.R.

KNORR: Z000805

NTI: 016865 | KNORR: Z000805



RETENTOR PINCA PINO MAIOR BORRACHA
RETENTOR PINCA PINO MAIOR BORRACHA
CALIPER RUBBER RETAINER



CALIPER - FREIO A DISCO
CALIPER - FREIO A DISCO
BRAKE DISC CALIPER

MERCEDES: 1938S, 1944S, ACCELO915C, ACTROS 2542, ACTROS 2544, ACTROS 2546, ACTROS 2631, ACTROS 2644, ACTROS 2646, ACTROS 2648, ACTROS 2655, ACTROS 3529, ACTROS 4844, AXOR1933, AXOR2035, AXOR2040, AXOR2044, AXOR2533, AXOR2540, AXOR2544, AXOR2640, AXOR2644, AXOR2825, AXOR2828, AXOR3340, AXOR3344, AXOR4140, O500, O500 M, O500 M A PARTIR 2003, O500 U, O500 U APARTIR DE 2003 | SCANIA: 114, 124, 164, 94, K114, K124, K94, L94, P.G.R.

KNORR: 24700

NTI: 024082 | KNORR: 24700



SUORTE MONTADO
SUORTE MONTADO
SUPPORT ASSY



CALIPER - FREIO A DISCO
CALIPER - FREIO A DISCO
BRAKE DISC CALIPER

MERCEDES: 1938S, 1944S, ACTROS 2542, ACTROS 2544, ACTROS 2546, ACTROS 2631, ACTROS 2644, ACTROS 2646, ACTROS 2648, ACTROS 2655, ACTROS 3529, ACTROS 4844, AXOR1933, AXOR2035, AXOR2040, AXOR2044, AXOR2533, AXOR2540, AXOR2544, AXOR2640, AXOR2644, AXOR2825, AXOR2828, AXOR3340, AXOR3344, AXOR4140, O500, O500 M, O500 U | SCANIA: 114, 124, 164, 94, K114, K124, K94, L94, P.G.R.

KNORR: K001011

NTI: 016863 | KNORR: K001011



SUORTE MONTADO REGULAR KNORR
SUORTE MONTADO REGULAR KNORR
CALIPER SHAFT HOUSING KNORR



CALIPER - FREIO A DISCO
CALIPER - FREIO A DISCO
BRAKE DISC CALIPER

MERCEDES: 1933S, 1938S, 1944S, 2035S, 2040S, 2044S, 2533S, 2540S, 2640S, 2644S, ACCELO915C, ACTROS 2542, ACTROS 2544, ACTROS 2546, ACTROS 2631, ACTROS 2644, ACTROS 2646, ACTROS 2648, ACTROS 2655, ACTROS 3529, ACTROS 4844, AXOR1933, AXOR2035, AXOR2040, AXOR2044, AXOR2533, AXOR2540, AXOR2544, AXOR2640, AXOR2644, AXOR2825, AXOR2828, AXOR3340, AXOR3344, AXOR4140, LS1938, O-500 URBANO, O500, O500 M, O500 U | SCANIA: 114, 124, 164, 94, K114, K124, K94, L94, P.G.R.

KNORR: 27011

NTI: 023797 | KNORR: 27011



TAMPA ACCELO SN5000
TAMPA ACCELO SN5000
COVER ACCELO SN5000



CALIPER - FREIO A DISCO
CALIPER - FREIO A DISCO
BRAKE DISC CALIPER

MERCEDES: ACCELO915C



KNORR: A6964205411

NTI: 024095 | KNORR: A6964205411


 TAMPA BORRACHA
TAMPA BORRACHA
RUBBER COVER

 CALIPER - FREIO A DISCO
CALIPER - FREIO A DISCO
BRAKE DISC CALIPER

MERCEDES: 1938S, 1944S, ACTROS 2542, ACTROS 2544, ACTROS 2546, ACTROS 2631, ACTROS 2644, ACTROS 2646, ACTROS 2648, ACTROS 2655, ACTROS 3529, ACTROS 4844, AXOR1933, AXOR2035, AXOR2040, AXOR2044, AXOR2533, AXOR2540, AXOR2544, AXOR2640, AXOR2644, AXOR2825, AXOR2828, AXOR3340, AXOR3344, AXOR4140, O500, O500 M, O500 U | SCANIA: 114, 124, 164, 94, K114, K124, K94, L94, P.G.R.

KNORR: A6344201301

NTI: 027260 | MERCEDES: 6344201301, A6344201301 | NTI: 028850


 TAMPA C/ ABRACADEIRA MBB
TAMPA C/ ABRACADEIRA MBB
COVER WITH CLAMP

 CALIPER - FREIO A DISCO
CALIPER - FREIO A DISCO
BRAKE DISC CALIPER

DIVERSOS: - | MERCEDES: 1938LS, 1938S, 1944S, ACTROS 2542, ACTROS 2544, ACTROS 2546, ACTROS 2631, ACTROS 2644, ACTROS 2646, ACTROS 2648, ACTROS 2655, ACTROS 3529, ACTROS 4844, AXOR1933, AXOR2035, AXOR2040, AXOR2044, AXOR2533, AXOR2540, AXOR2544, AXOR2640, AXOR2644, AXOR2825, AXOR2828, AXOR3340, AXOR3344, AXOR4140, LS1938 - ATE 2003, O500, O500 M, O500 U, O500 U APARTIR DE 2003

KNORR: 24580

NTI: 024089 | KNORR: 24580


 TAMPA C/ABRACADEIRA
TAMPA C/ABRACADEIRA
COVER WITH CLAMP

 CALIPER - FREIO A DISCO
CALIPER - FREIO A DISCO
BRAKE DISC CALIPER

MERCEDES: 1938S, 1944S, ACTROS 2542, ACTROS 2544, ACTROS 2546, ACTROS 2631, ACTROS 2644, ACTROS 2646, ACTROS 2648, ACTROS 2655, ACTROS 3529, ACTROS 4844, AXOR1933, AXOR2035, AXOR2040, AXOR2044, AXOR2533, AXOR2540, AXOR2544, AXOR2640, AXOR2644, AXOR2825, AXOR2828, AXOR3340, AXOR3344, AXOR4140, O500, O500 M, O500 U | SCANIA: 114, 124, 164, 94, K114, K124, K94, L94, P.G.R.

KNORR: 24440

NTI: 024088 | KNORR: 24440


 TAMPA METALICA C/RETENTOR/PARAFUSO
TAMPA METALICA C/RETENTOR/PARAFUSO
CALIPER COVER W/SEAL AND BOLTS

 CALIPER - FREIO A DISCO
CALIPER - FREIO A DISCO
BRAKE DISC CALIPER

MERCEDES: ACCELO915C

KNORR: 27010

NTI: 023796 | KNORR: 27010


 TAMPA METALICA PINCA SN6000/7000
TAMPA METALICA PINCA SN6000/7000
CALIPER METAL COVER SN 6000/7000

 CALIPER - FREIO A DISCO
CALIPER - FREIO A DISCO
BRAKE DISC CALIPER

MERCEDES: 1938S, 1944S, ACTROS 2542, ACTROS 2544, ACTROS 2546, ACTROS 2631, ACTROS 2644, ACTROS 2646, ACTROS 2648, ACTROS 2655, ACTROS 3529, ACTROS 4844, AXOR1933, AXOR2035, AXOR2040, AXOR2044, AXOR2533, AXOR2540, AXOR2544, AXOR2640, AXOR2644, AXOR2825, AXOR2828, AXOR3340, AXOR3344, AXOR4140, O500, O500 M, O500 U | SCANIA: 114, 124, 164, 94, K114, K124, K94, L94, P.G.R.



KNORR: II39769F A

NTI: 015979 | KNORR: II39769F A | NTI: 023408



TAMPA METALICA REP. PINCA KNORR
TAMPA METALICA REP. PINCA KNORR
COVER CALIPER KNORR (METAL)



CALIPER - FREIO A DISCO
CALIPER - FREIO A DISCO
BRAKE DISC CALIPER

MERCEDES: 1938S, 1944S, ACCELO915C, AXOR, LS1622, LS1938, O500, O500 M, O500 U | SCANIA: 114, 124, 164, 94, K114, K124, K94, L94, P.G.R.

KNORR: 24600

NTI: 024085 | KNORR: 24600



TAMPA PLAST. CORR. C/JUNTA C/SENSOR 2
FIOS
TAMPA PLAST. CORR. C/JUNTA C/SENSOR 2
FIOS
PLASTIC COVER W/ SENSOR AND 2 WIRES



CALIPER - FREIO A DISCO
CALIPER - FREIO A DISCO
BRAKE DISC CALIPER

MERCEDES: ACCELO915C, O-500 (2.EIXO)

KNORR: K001007 A

NTI: 016861 | KNORR: K001007 A



TAMPA PLAST. CORR. C/JUNTA E SENSOR
(2FIOS) KNORR
TAMPA PLAST. CORR. C/JUNTA E SENSOR
(2FIOS) KNORR
COVER CHAIN CALIPER W/ GASKET/SENSOR
(PLASTIC)



CALIPER - FREIO A DISCO
CALIPER - FREIO A DISCO
BRAKE DISC CALIPER

MERCEDES: 1938S, 1944S, ACCELO915C, ACTROS 2542, ACTROS 2544, ACTROS 2546, ACTROS 2631, ACTROS 2644, ACTROS 2646, ACTROS 2648, ACTROS 2655, ACTROS 3529, ACTROS 4844, AXOR1933, AXOR2035, AXOR2040, AXOR2044, AXOR2533, AXOR2540, AXOR2544, AXOR2640, AXOR2644, AXOR2825, AXOR2828, AXOR3340, AXOR3344, AXOR4140, O500, O500 M, O500 R, O500 RS, O500 RSD, O500 U | SCANIA: 114, 124, 164, 94, K114, K124, K94, L94, P.G.R.

KNORR: K001007

NTI: 016860 | KNORR: K001007



TAMPA PLAST. CORR. C/JUNTA E SENSOR
(3FIOS) KNORR
TAMPA PLAST. CORR. C/JUNTA E SENSOR
(3FIOS) KNORR
COVER CHAIN CALIPER W/ GASKET/SENSOR
(PLASTIC)



CALIPER - FREIO A DISCO
CALIPER - FREIO A DISCO
BRAKE DISC CALIPER

MERCEDES: 1938S, 1944S, ACCELO915C, ACTROS 2542, ACTROS 2544, ACTROS 2546, ACTROS 2631, ACTROS 2644, ACTROS 2646, ACTROS 2648, ACTROS 2655, ACTROS 3529, ACTROS 4844, AXOR1933, AXOR2035, AXOR2040, AXOR2044, AXOR2533, AXOR2540, AXOR2544, AXOR2640, AXOR2644, AXOR2825, AXOR2828, AXOR3340, AXOR3344, AXOR4140, O500, O500 M, O500 R, O500 RS, O500 RSD, O500 U | SCANIA: 114, 124, 164, 94, K114, K124, K94, L94, P.G.R.

KNORR: 24500

NTI: 024086 | KNORR: 24500



TAMPA PLAST. CORR. C/JUNTA S/SENSOR
TAMPA PLAST. CORR. C/JUNTA S/SENSOR
PLASTIC COVER W/ GASKET W/O SENSOR



CALIPER - FREIO A DISCO
CALIPER - FREIO A DISCO
BRAKE DISC CALIPER

MERCEDES: ACCELO915C, O-500 (2.EIXO)



KNORR: A9704204001 X

NTI: 025077 | KNORR: A9704204001 X



TAMPA PLASTICA 2 FIOS ACCELO SN5000
TAMPA PLASTICA 2 FIOS ACCELO SN5000
PLASTIC COVER WITH 2 WIRES ACCELO
SN5000



CALIPER - FREIO A DISCO
CALIPER - FREIO A DISCO
BRAKE DISC CALIPER

MERCEDES: ACCELO1016, ACCELO915C

KNORR: A9704204001 T

NTI: 025076 | KNORR: A9704204001 T



TAMPA PLASTICA 3 FIOS ACCELO SN5000
TAMPA PLASTICA 3 FIOS ACCELO SN5000
PLASTIC COVER WITH 3 WIRES



CALIPER - FREIO A DISCO
CALIPER - FREIO A DISCO
BRAKE DISC CALIPER

MERCEDES: ACCELO1016, ACCELO915C



DIVERSOS: 20706903 VK

NTI: 026658 | VOLVO: 20706903 VK, 85107913 VK



KIT GUARDA PO SAPATA PINCA MERITOR
KIT GUARDA PO SAPATA PINCA MERITOR
CALIPER SHOE REPAIR KIT MERITOR



CALIPER FREIO A DISCO
CALIPER FREIO A DISCO
BRAKE DISC CALIPER

DIVERSOS: -

DIVERSOS: A9794200202

NTI: 027261 | MERCEDES: 9794200202, A9794200202



TAMPA PROTECAO MBB
TAMPA PROTECAO MBB
COVER PROTECTION

DIVERSOS: -

DIVERSOS: 1088812 V

NTI: 017069 | VOLVO: 1088812 V, 1606179 V



BUCHA EIXO TRAS. ZECAN FH/FM/NH
BUCHA EIXO TRAS. ZECAN FH/FM/NH
REAR AXLE BUSHING FH/FM/NH

DIVERSOS: - | VOLVO: B10B, B12, FH12, FH16, FM10, FM12, FM7, FM9, NH12, NL10, NL12

DIVERSOS: 272910 V

NTI: 009614 | VOLVO: 272910 V



EIXO REGULADOR PATIM FREIO FH/NH/FM
EJE
SHAFT

DIVERSOS: - | VOLVO: B10B, B12, FH12, FH16, FM10, FM12, FM7, FM9, NH12, NL10, NL12

DIVERSOS: 3090954 V

NTI: 009815 | VOLVO: 1696448 V, 3090954 V



GUARDA PO REG. FREIO (Z-KAN)
TAPA PROTECION
DUST COVER

DIVERSOS: - | VOLVO: B10B, B12, FH12, FH16, FM10, FM12, FM7, FM9, NH12, NL10, NL12

DIVERSOS: 1696450 V

NTI: 011685 | VOLVO: 1696450 V



JUNTA REP. REG. FREIO =Z-CAM IMPORT=
FH/NH/FM
JUNTA
GASKET

DIVERSOS: - | VOLVO: B10B, B12, FH12, FH16, FM10, FM12, FM7, FM9, NH12, NL10, NL12



DIVERSOS: 24400

NTI: 024081 | MERITOR: 24400



KIT BUCHA =MERITOR=
KIT BUCHA =MERITOR=
BUSHING KIT MERITOR



CALIPER FREIO A DISCO
CALIPER FREIO A DISCO
BRAKE DISC CALIPER

DIVERSOS: - | VOLVO: B12M, B12R, B7R, B9R

DIVERSOS: A6964205801

NTI: 027258 | MERCEDES: 6964205801, A6964205801 | NTI: 027259



KIT MANCAL ONIBUS URBANO MBB
KIT MANCAL ONIBUS URBANO MBB
CALIPER REPAIR KIT BUS MBB



CALIPER - FREIO A DISCO
CALIPER - FREIO A DISCO
BRAKE DISC CALIPER

DIVERSOS: - | MERCEDES: 1938S, 1944S, ACTROS 2542, ACTROS 2544, ACTROS 2546, ACTROS 2631, ACTROS 2644, ACTROS 2646, ACTROS 2648, ACTROS 2655, ACTROS 3529, ACTROS 4844, AXOR, AXOR1933, AXOR2035, AXOR2040, AXOR2044, AXOR2533, AXOR2540, AXOR2544, AXOR2640, AXOR2644, AXOR2825, AXOR2828, AXOR3340, AXOR3344, AXOR4140, LS1622, LS1938, O500, O500 M, O500 U | SCANIA: 114, 124, 164, 94, K114, K124, K94, L94, P.G.R.

DIVERSOS: ELSA195 E

NTI: 024104 | MERITOR: ELSA195 E



MECANISMO AJUSTE =MERITOR=
MECANISMO AJUSTE =MERITOR=
ADJUSTER MECHANISM MERITOR



CALIPER FREIO A DISCO
CALIPER FREIO A DISCO
BRAKE DISC CALIPER

DIVERSOS: - | VOLVO: B12M, B12R, B7R, B9R

DIVERSOS: ELSA195 C

NTI: 016752 | MERITOR: ELSA195 C



MECANISMO AJUSTE L.D.
MECANISMO AJUSTE L.D.
ADJUSTING MECHANISM RIGHT



CALIPER FREIO A DISCO
CALIPER FREIO A DISCO
BRAKE DISC CALIPER

DIVERSOS: - | VOLVO: B12B, B7L, FH12, FH16, FM10, FM12, FM7, FM9

DIVERSOS: 27016

NTI: 023807 | MERITOR: 27016



MECANISMO AJUSTE L.D. (PINCA DUCO)
MERITOR
MECANISMO AJUSTE L.D. (PINCA DUCO)
MERITOR
ADJUSTING MECHANISM R.H.



CALIPER FREIO A DISCO
CALIPER FREIO A DISCO
BRAKE DISC CALIPER

DIVERSOS: - | VOLVO: B10, B12, B7

DIVERSOS: ELSA195 B

NTI: 016751 | MERITOR: ELSA195 B



MECANISMO AJUSTE L.E.
MECANISMO AJUSTE L.E.
ADJUSTING MECHANISM L.H.



CALIPER FREIO A DISCO
CALIPER FREIO A DISCO
BRAKE DISC CALIPER

DIVERSOS: - | VOLVO: B12B, B7L, FH12, FH16, FM10, FM12, FM7, FM9



DIVERSOS: 27015

NTI: 023806 | MERITOR: 27015



MECANISMO AJUSTE L.E. (PINCA DUCO)
MERITOR
MECANISMO AJUSTE L.E. (PINCA DUCO)
MERITOR
ADJUSTING MECHANISM L.H.



CALIPER FREIO A DISCO
CALIPER FREIO A DISCO
BRAKE DISC CALIPER

DIVERSOS: - | VOLVO: B10, B12, B7

DIVERSOS: 3097092 V

NTI: 015898 | VOLVO: 1696444 V, 3097092 V, 30970922 V



MOLA RETORNO PATIM FREIO FH
MOLA RETORNO PATIM FREIO FH
C-RETURN SPRING

DIVERSOS: - | VOLVO: B10B, B12, FH12, FH16, FM10, FM12, FM7, FM9, NH12, NL10, NL12

DIVERSOS: 3090964 V

NTI: 009619 | VOLVO: 276100 V, 3090964 V, 3098275 V



PINHAO REG. FREIO FH/NH/FM
JUEGO REPARACION
SET KIT

DIVERSOS: - | VOLVO: B10B, B12, FH12, FH16, FM10, FM12, FM7, FM9, NH12, NL10, NL12

DIVERSOS: 8550977 V

NTI: 009620 | VOLVO: 272908 V, 3097100 V, 3098277 V, 8550977 V



PINHAO REG. FREIO L.D. FH/NH/FM
JUEGO DE REPARO
REPAIR KIT

DIVERSOS: - | VOLVO: B10B, B12, FH12, FH16, FM10, FM12, FM7, FM9, NH12, NL10, NL12

DIVERSOS: 3090998 V

NTI: 019795 | VOLVO: 1081820 V, 3090998 V



PINHAO REG. FREIO L.D. FH12/16/FM9/12/
NH12
PINHAO REG. FREIO L.D. FH12/16/FM9/12/
NH12
BRAKE PINION REGULATOR RH FH12/16 FM9
/12 NH12

DIVERSOS: - | VOLVO: B10B, B12, FH12, FH16, FM10, FM12, FM7, FM9, NH12, NL10, NL12

DIVERSOS: 8550978 V

NTI: 009621 | VOLVO: 272909 V, 3097099 V, 3098276 V, 8550978 V



PINHAO REG. FREIO L.E. FH/NH/FM
JG. REPAROS
REPAIR SET

DIVERSOS: - | VOLVO: B10B, B12, FH12, FH16, FM10, FM12, FM7, FM9, NH12, NL10, NL12

DIVERSOS: 3090997 V

NTI: 019796 | VOLVO: 1081819 V, 3090997 V



PINHAO REG. FREIO L.E. FH12/16/FM9/12/
NH12
PINHAO REG. FREIO L.E. FH12/16/FM9/12/
NH12
BRAKE PINION REGULATOR LH FH12/16 FM9 /
12 NH12

DIVERSOS: - | VOLVO: B10B, B12, FH12, FH16, FM10, FM12, FM7, FM9, NH12, NL10, NL12

DIVERSOS: 1696925 V

NTI: 009618 | VOLVO: 1696925 V



PINHAO REGULADOR FREIO L.D. FH/NH/FM
PINON DERECHO
BRAKE ADJUSTING PINION R.H

DIVERSOS: - | VOLVO: B10B, B12, FH12, FH16, FM10, FM12, FM7, FM9, NH12, NL10, NL12

DIVERSOS: 1696924 V

NTI: 009617 | VOLVO: 1696924 V



PINHAO REGULADOR FREIO L.E. FH/NH/FM
PINON IZQUERDO
BRAKE ADJUSTING PINION L.H

DIVERSOS: - | VOLVO: B10B, B12, FH12, FH16, FM10, FM12, FM7, FM9, NH12, NL10, NL12

DIVERSOS: 1696446 V

NTI: 014596 | VOLVO: 1696446 V



PINO REGULADOR FREIO =TODOS=
PERNO
PIN

DIVERSOS: - | VOLVO: B10B, B12, FH12, FH16, FM10, FM12, FM7, FM9, NH12, NL10, NL12

DIVERSOS: A0004230316

NTI: 027263 | MERCEDES: 0004230316, A0004230316 | NTI: 027262



REP. PARCIAL SAPATA KNORR =69MM= C/
DISCO MENOR
REP. PARCIAL SAPATA KNORR =69MM= C/
DISCO MENOR
CALIPER TAPPET REPAIR KIT MBB



CALIPER - FREIO A DISCO
CALIPER - FREIO A DISCO
BRAKE DISC CALIPER

DIVERSOS: - | MERCEDES: 1938S, 1944S, ACTROS, ACTROS 2542, ACTROS 2544, ACTROS 2546, ACTROS 2631, ACTROS 2644, ACTROS 2646, ACTROS 2648, ACTROS 2655, ACTROS 3529, ACTROS 4844, AXOR, AXOR1933, AXOR2035, AXOR2040, AXOR2044, AXOR2533, AXOR2540, AXOR2544, AXOR2640, AXOR2644, AXOR2825, AXOR2828, AXOR3340, AXOR3344, AXOR4140, O500, O500 M, O500 U | SCANIA: 114, 124, 164, 94, K114, K124, K94, L94, P.G.R.

DIVERSOS: 272905 V

NTI: 010843 | VOLVO: 272905 V



REP. REG. FREIO FH/NH/FM =Z-KAM IMPORT.
=
KIT RETEN
RETAINER KIT

DIVERSOS: - | VOLVO: B10B, B12, FH12, FH16, FM10, FM12, FM7, FM9, NH12, NL10, NL12



DIVERSOS: 276098 V

NTI: 010913 | VOLVO: 276098 V



REP. REG. PATIM FREIO L.D. FH/NH/FM
BLOQUEIO MARCHA ATRAS DER.
RH IDLING BLOCK

DIVERSOS: - | VOLVO: B10B, B12, FH12, FH16, FM10, FM12, FM7, FM9, NH12, NL10, NL12

DIVERSOS: 276097 V

NTI: 010914 | VOLVO: 276097 V



REP. REG. PATIM FREIO L.E. FH/NH/FM
BLOQUEIO MARCHA ATRAS IZQ.
LH IDLING BLOCK

DIVERSOS: - | VOLVO: B10B, B12, FH12, FH16, FM10, FM12, FM7, FM9, NH12, NL10, NL12

DIVERSOS: 8550977 VX

NTI: 027932 | VOLVO: 8550977 VX



REP. REGULADOR FREIO L.D. FH/NH/FM
JUEGO DE REPARO
BREAK REP. KIT RH VOLVO FH/NH/FM

DIVERSOS: - | VOLVO: B10B, B12, FH12, FH16, FM10, FM12, FM7, FM9, NH12, NL10, NL12

DIVERSOS: 8550978 VX

NTI: 027933 | VOLVO: 8550978 VX



REP. REGULADOR FREIO L.E. FH/NH/FM
JUEGO DE REPARO
BRAKE REP. KIT LH VOLVO FH/NH/FM

DIVERSOS: - | VOLVO: B10B, B12, FH12, FH16, FM10, FM12, FM7, FM9, NH12, NL10, NL12

DIVERSOS: MCK1254

NTI: 016755 | MERITOR: MCK1254



REPARO PINCA MERITOR
REPARO PINCA MERITOR
CALIPER REPAIR KIT MERITOR TYPE



CALIPER FREIO A DISCO
CALIPER FREIO A DISCO
BRAKE DISC CALIPER

DIVERSOS: - | VOLVO: B12M, B12R, B7R, B9R

DIVERSOS: 20706903 V

NTI: 016754 | VOLVO: 20706903 V, 85107913 V



REPARO SAPATA PINCA MERITOR
REPARO SAPATA PINCA MERITOR
CALIPER SHOE REPAIR KIT MERITOR



CALIPER FREIO A DISCO
CALIPER FREIO A DISCO
BRAKE DISC CALIPER

DIVERSOS: - | VOLVO: B12M, B12R, B7R, B9R



DIVERSOS: 24570

NTI: 024083 | MERITOR: 24570



TAMPA ALUMINIO COMPLETA =MERITOR=
TAMPA ALUMINIO COMPLETA =MERITOR=
ALUMINIUM COVER COMPLETE (MERITOR)



CALIPER FREIO A DISCO
CALIPER FREIO A DISCO
BRAKE DISC CALIPER

DIVERSOS: - | VOLVO: B12M, B12R, B7R, B9R

DIVERSOS: A6344201301

NTI: 027260 | MERCEDES: 6344201301, A6344201301 | NTI: 028850



TAMPA C/ ABRACADEIRA MBB
TAMPA C/ ABRACADEIRA MBB
COVER WITH CLAMP



CALIPER - FREIO A DISCO
CALIPER - FREIO A DISCO
BRAKE DISC CALIPER

DIVERSOS: - | MERCEDES: 1938LS, 1938S, 1944S, ACTROS 2542, ACTROS 2544, ACTROS 2546, ACTROS 2631, ACTROS 2644, ACTROS 2646, ACTROS 2648, ACTROS 2655, ACTROS 3529, ACTROS 4844, AXOR1933, AXOR2035, AXOR2040, AXOR2044, AXOR2533, AXOR2540, AXOR2544, AXOR2640, AXOR2644, AXOR2825, AXOR2828, AXOR3340, AXOR3344, AXOR4140, LS1938 - ATE 2003, O500, O500 M, O500 U, O500 U APARTIR DE 2003

DIVERSOS: 1696449 V

NTI: 013282 | VOLVO: 1696449 V



TAMPA CILINDRO RODA FH
TAPA CILINDRO RODA
COVER

DIVERSOS: - | VOLVO: B10B, B12, FH12, FH16, FM10, FM12, FM7, FM9, NH12, NL10, NL12



CONTATOS / CONTACTS

Vendas / Sales: vendas@ntifreios.com.br
Geral / General: cipec@cipec.com.br
Televendas / Telesales: +55 19 3834.9822
Fax Gratuito / Fax Free: 0800.707.9822
www.ntifreios.com.br



KNORR

Conversões	N° NTI	Pág.
1517008	014931	12
24100	023371	10
24440	024088	17
24500	024086	18
24550	024087	8
24580	024089	17
24590	024077	8
24600	024085	18
24700	024082	16
27010	023796	17
27011	023797	16
27012	023798	13
27013	023799	8
30026	024080	9
6884204801 B	024074	8
9704204001 A	024091	9
A6964205301	025078	14
A6964205411	024095	17
A9704203901	023790	10
A9704204001	017579	11
A9704204001 B	024092	9
A9704204001 R	025075	11
A9704204001 T	025076	19
A9704204001 X	025077	19
A9794200101	017580	12
C54852	015980	10
C56519	016864	9
C62758	016758	11
C71606	016872	13
C72884	016873	12
II19712004	015980	10
II36689	014931	12
II36690	014931	12
II36691	014932	13
II39769F A	015979	18
II40677F	016862	15
K000944	014935	15
K001007	016860	18
K001007 A	016861	18
K001011	016863	16
K001470	016756	14
K001915	016866	14
K001928	023352	15
K001928 P	023802	15
K002872	014934	15
K002872 X	026656	8
K010603	014928	14
K010604	014935	15
K031844K50	026923	16
K051689	023788	12
SB006	014930	12
SB5000	014938	11
SB6000	014933	9
SB7000	014936	10
SK7000	023354	13
SN5000	017582	10
SN6000	014936	10
Z000805	016865	16
Z000805+000810	016757	11
Z000810	027095	13
Z009036	015980	10

MERCEDES

Conversões	N° NTI	Pág.
0004230316	027263	14

MERCEDES

Conversões	N° NTI	Pág.
6344201301	027260	17
6964205801	027258	21
9794200202	027261	20
A0004230316	027263	14
A6344201301	027260	17
A6964205801	027258	21
A9794200202	027261	20

MERITOR

Conversões	N° NTI	Pág.
24400	024081	21
24570	024083	25
27015	023806	22
27016	023807	21
ELSA195 B	016751	21
ELSA195 C	016752	21
ELSA195 E	024104	21
MCK1254	016755	24

NTI

Conversões	N° NTI	Pág.
015981	015983	6
021502	016756	14
023391	014934	15
023392	014934	15
023408	015979	18
023418	014928	14
023445	014935	15
023489	017576	5
023633	014928	14
023726	023071	3
023756	023352	15
023786	017574	6
023823	014935	15
023999	015983	6
024000	015983	6
024132	023802	15
024298	024062	6
024299	024061	5
025079	025078	14
027259	027258	21
027262	027263	14
028850	027260	17

VOLVO

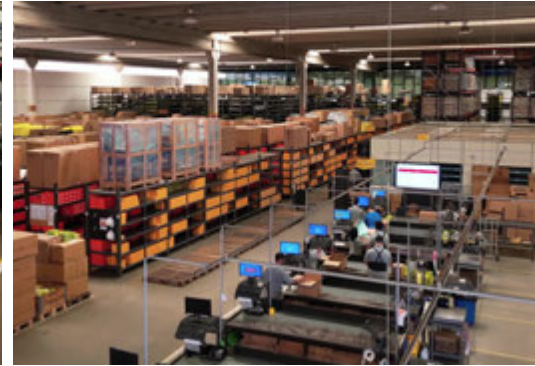
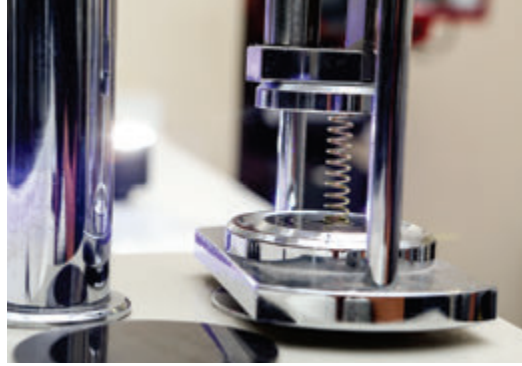
Conversões	N° NTI	Pág.
1081819 V	019796	23
1081820 V	019795	22
1088812 V	017069	20
1606179 V	017069	20
1696444 V	015898	22
1696446 V	014596	23
1696448 V	009815	20
1696449 V	013282	25
1696450 V	011685	20
1696924 V	009617	23
1696925 V	009618	23
20538833 VA	024061	5
20538833 VB	024062	6
20706903 V	016754	24
20706903 VK	026658	20
272905 V	010843	23
272908 V	009620	22
272909 V	009621	22

VOLVO

Conversões	N° NTI	Pág.
272910 V	009614	20
276097 V	010914	24
276098 V	010913	24
276100 V	009619	22
3090954 V	009815	20
3090964 V	009619	22
3090997 V	019796	23
3090998 V	019795	22
3097092 V	015898	22
30970922 V	015898	22
3097099 V	009621	22
3097100 V	009620	22
3098275 V	009619	22
3098276 V	009621	22
3098277 V	009620	22
85107913 V	016754	24
85107913 VK	026658	20
8550977 V	009620	22
8550977 VX	027932	24
8550978 V	009621	22
8550978 VX	027933	24

WABCO

Conversões	N° NTI	Pág.
0012956014	023351	3
0013227166	023071	3
0013230085	023072	7
0013230086	017576	5
0013230109	023070	6
0040175076	016874	4
0040175077	015987	3
20501	015989	5
20502	015990	4
20504	015996	5
20538832 VA	024068	4
20538832 VB	024076	3
20538832 VC	025091	5
20538833 R	025089	6
20538833 RP	025090	6
27018	024107	4
6129997762	017574	6
6401750740	015986	3
6401750750	015986	3
6401750760	015986	3
6401750770	015986	3
6401759222 A	015983	6
6401759222 C	015985	4
6401759222 D	015988	5
6884204801	018166	7
6884204801 A	024073	3
6884204801 E	024063	7
6884204901	024109	4
8845030242 A	015983	6
8845035032 A	015983	6





NTI FREIOS



www.ntifreios.com.br

EMPRESA CERTIFICADA
CERTIFIED COMPANY **ISO 9001:2015**