

# REPAROS DE MANGA DE EIXO

*King Pin Kit*

[www.cipec.com.br](http://www.cipec.com.br)

EMPRESA CERTIFICADA  
CERTIFIED COMPANY ISO 9001:2015

# Empresa

## Company | La Empresa

A Cipec iniciou suas atividades em 1983 na cidade de São Caetano como um pequeno distribuidor e fabricante de peças de reposição para caminhões e ônibus. Trabalhando com empenho e seriedade, a Cipec rapidamente ampliou seu leque de produtos de distribuição, alcançando logo em seguida o status de referência nacional no mercado de reposição da linha Scania.

Em 1999, devido ao ritmo crescente dos negócios, a estrutura da Cipec já não comportava a demanda, levando a empresa a transferir suas atividades para uma área de 20.000 m<sup>2</sup> em Indaiatuba, localizada estrategicamente no interior paulista. Nesse novo local, a empresa investiu fortemente na parte fabril e agregou as linhas Volvo, VW, MWM, Cummins e Iveco.

Com amplo espaço fabril e novos nichos de mercado se abrindo, em 2003 a Cipec inovou mais uma vez, implantando uma completa linha de servos de embreagem, válvulas e reparos de freios para linha pesada. Surgiu então a NTI, uma marca Cipec que em pouco tempo ficaria conhecida no mercado, oferecendo um produto competitivo e altamente confiável.

Atualmente, a Cipec conta com mais de 170 colaboradores e comercializa mais de 22.000 itens a partir de sua unidade fabril localizada em Indaiatuba, ampliando ainda mais sua capacidade de produção e expedindo mais de 30 toneladas de produtos por dia para mais de 50 países em todo o mundo.

Cipec began its activities in 1983 in the city of São Caetano as a small distributor and manufacturer of spare parts for trucks and buses. Working with dedication and seriousness, Cipec quickly expanded its range of distribution products and soon achieved national reference status in the replacement market for the Scania line.

By 1999, its structure could no longer accommodate the growing pace of business, prompting Cipec to transfer its operations to a 20,000 m<sup>2</sup> area in Indaiatuba, strategically located in the interior of São Paulo. Strong investments were made in the manufacturing sector, and the Volvo, VW, MWM, Cummins, and Iveco lines were added.

With ample manufacturing space and new market niches emerging, Cipec innovated once again in 2003, introducing a complete line of clutch servos, valves, and brake repair kits for heavy-duty applications. Thus, NTI was born, a Cipec brand that quickly became known in the market, offering competitive and highly reliable products.

Today, Cipec employs over 170 employees and sells over 22,000 items from its manufacturing facility located in Indaiatuba, further increasing its production capacity and shipping over 30 tons of products per day to more than 50 countries worldwide.

La Cipec inició sus actividades en 1983 en la ciudad de São Caetano como un pequeño distribuidor y fabricante de repuestos para camiones y autobuses. Trabajando con dedicación y seriedad, Cipec amplió rápidamente su gama de productos de distribución y pronto alcanzó el estatus de referencia nacional en el mercado de repuestos para la línea Scania.

Para 1999, su estructura ya no podía soportar el creciente ritmo de negocios, lo que llevó a Cipec a trasladar sus operaciones a una área de 20,000 m<sup>2</sup> en Indaiatuba, estratégicamente ubicada en el interior de São Paulo. Se realizaron fuertes inversiones en el sector manufacturero y se añadieron las líneas Volvo, VW, MWM, Cummins y Iveco.

Con un amplio espacio de fabricación y nuevos nichos de mercado emergentes, Cipec innovó una vez más en 2003, introduciendo una línea completa de servos de embrague, válvulas y reparaciones de frenos para aplicaciones de servicio pesado. Así nació NTI, una marca de Cipec que rápidamente se hizo conocida en el mercado, ofreciendo productos competitivos y altamente confiables.

Hoy en día, Cipec emplea a más de 170 trabajadores y vende más de 22,000 artículos desde su planta de fabricación ubicada en Indaiatuba, aumentando aún más su capacidad de producción y enviando más de 30 toneladas de productos al día a más de 50 países en todo el mundo.



AGRALE	05
DAF	14
FORD	15
IVECO	27
MAN	33
MERCEDES	34
SCANIA	41
VOLVO	44
VW	47
CONTATOS	72

AGRALE	05
DAF	14
FORD	15
IVECO	27
MAN	33
MERCEDES	34
SCANIA	41
VOLVO	44
VW	47
CONTACTS	72

AGRALE: 6007099062001

REP. MANGA CPL. P/1LD.=BRAS= 28,65X181,5 =STD=

KING PIN KIT 28,65X181,5 =STD=

AGRALE: 6007099062001  
CIPEC: 020052

AGRALE | 4000D | 4000D A6 MICRO | 4500D | 4500D A6 MICRO | 5000D | 5000D A6 MICRO |  
VOLARE ELETRONICO V8 MWM | VOLARE V6 2005 | VOLARE V8 PRIMEIRA EDICAO



AGRALE: 6007099062001 10

REP. MANGA CPL. P/1LD.=BRAS= 28,75X181,5 =0,10=

KING PIN KIT 28,75X181,5 =0,10=

AGRALE: 6007099062001 10  
CIPEC: 021363

AGRALE | 4000D | 4000D A6 MICRO | 4500D | 4500D A6 MICRO | 5000D | 5000D A6 MICRO |  
VOLARE ELETRONICO V8 MWM | VOLARE V6 2005 | VOLARE V8 PRIMEIRA EDICAO



AGRALE: 6007099062001 20

REP. MANGA CPL. P/1LD.=BRAS= 28,85X181,5 =0,20=

KING PIN KIT 28,85X181,5 =0,20=

AGRALE: 6007099062001 20 / BF5T311E 20  
CIPEC: 021355

AGRALE | 4000D | 4000D A6 MICRO | 4500D | 4500D A6 MICRO | 5000D | 5000D A6 MICRO |  
VOLARE ELETRONICO V8 MWM | VOLARE V6 2005 | VOLARE V8 PRIMEIRA EDICAO | FORD |  
CARGO 814 1996 ATE 2000 | F4000 4BT CUMMINS TURBO 4BT | F4000 MWM 229 | F4000 MWM 4.  
3L TURBO | F4000 MWM NA



AGRALE: 6007099062001 30

REP. MANGA CPL. P/1LD.=BRAS= 28,95X181,5 =0,30=

KING PIN KIT 28,95X181,5 =0,30=

AGRALE: 6007099062001 30  
CIPEC: 021369

AGRALE | 4000D | 4000D A6 MICRO | 4500D | 4500D A6 MICRO | 5000D | 5000D A6 MICRO |  
VOLARE ELETRONICO V8 MWM | VOLARE V6 2005 | VOLARE V8 PRIMEIRA EDICAO



AGRALE: 6007099062001CH

REP. MANGA CPL. P/1LD.=BRAS= 28,65X181,5 =STD=

KING PIN KIT 28,65X181,5 =STD=

AGRALE: 6007099062001CH  
CIPEC: 021374

AGRALE | 4000D | 4000D A6 MICRO | 4500D | 4500D A6 MICRO | 5000D | 5000D A6 MICRO |  
VOLARE ELETRONICO V8 MWM | VOLARE V8 PRIMEIRA EDICAO



AGRALE: 6007099062001CH 10

REP. MANGA CPL. P/1LD.=BRAS= 28,75X181,5 =0,10=

KING PIN KIT 28,75X181,5 =0,10=

AGRALE: 6007099062001CH 10  
CIPEC: 021384

AGRALE | 4000D | 4000D A6 MICRO | 4500D | 4500D A6 MICRO | 5000D | 5000D A6 MICRO |  
VOLARE ELETRONICO V8 MWM | VOLARE V8 PRIMEIRA EDICAO



AGRALE: 6007099062001CH 20

REP. MANGA CPL. P/1LD.=BRAS= 28,85X181,5 =0,20=

KING PIN KIT 28,85X181,5 =0,20=

AGRALE: 6007099062001CH 20  
CIPEC: 021447

AGRALE | 4000D | 4000D A6 MICRO | 4500D | 4500D A6 MICRO | 5000D | 5000D A6 MICRO |  
VOLARE ELETRONICO V8 MWM | VOLARE V8 PRIMEIRA EDICAO



AGRALE: 6007099062001CH 30

REP. MANGA CPL. P/1LD.=BRAS= 28,95X181,5 =0,30=

KING PIN KIT 28,95X181,5 =0,30=

AGRALE: 6007099062001CH 30  
CIPEC: 021381

AGRALE | 4000D | 4000D A6 MICRO | 4500D | 4500D A6 MICRO | 5000D | 5000D A6 MICRO |  
VOLARE ELETRONICO V8 MWM | VOLARE V8 PRIMEIRA EDICAO



AGRALE: 6007099068008

REP. MANGA CPL. P/1LD.=MERITOR= 31,35MM =STD=

KING PIN KIT =MERITOR= 31,35MM =STD=

AGRALE: 6007099068008  
CIPEC: 021320

AGRALE | VOLARE A8 | VOLARE AFRICA SUL W8-RHD | VOLARE W12 MA 12000 MWM 4.12TCE 185CV | VOLARE W8 SEGUNDA EDICAO | FORD | F11000 | F13000 | F600/F13000 APOS 1972 ATE 1992



AGRALE: 6007099068008 10

REP. MANGA CPL. P/1LD.=MERITOR= 31,45MM =0,10=

KING PIN KIT =MERITOR= 31,45MM =0,10=

AGRALE: 6007099068008 10  
CIPEC: 021343

AGRALE | VOLARE A8 | VOLARE AFRICA SUL W8-RHD | VOLARE W8 SEGUNDA EDICAO | FORD | F11000 | F13000 | F600/F13000 APOS 1972 ATE 1992



AGRALE: 6007099068008 20

REP. MANGA CPL. P/1LD.=MERITOR= 31,55MM =0,20=

KING PIN KIT =MERITOR= 31,55MM =0,20=

AGRALE: 6007099068008 20  
CIPEC: 024240

AGRALE | VOLARE A8 | VOLARE AFRICA SUL W8-RHD | VOLARE W8 SEGUNDA EDICAO | FORD | F11000 | F13000 | F600/F13000 APOS 1972 ATE 1992



AGRALE: 6007099068008 30

REP. MANGA CPL. P/1LD.=MERITOR= 31,65MM =0,30=

KING PIN KIT =MERITOR= 31,65MM =0,30=

AGRALE: 6007099068008 30  
CIPEC: 024241

AGRALE | VOLARE A8 | VOLARE AFRICA SUL W8-RHD | VOLARE W8 SEGUNDA EDICAO | FORD | F11000 | F13000 | F600/F13000 APOS 1972 ATE 1992



AGRALE: 6012008059007JG

REP. MANGA CPL. P/1LD.=MERITOR= 40,80MM =STD=

KING PIN KIT 40,80MM =MERITOR= =STD=

AGRALE: 6012008059007JG  
CIPEC: 023708

AGRALE | VOLARE W12 MA 12000 MWM 4.12TCE 185CV



AGRALE: 6012008059007JG 10

REP. MANGA CPL. P/1LD.=MERITOR= 40,90MM =0,10=

KING PIN KIT =MERITOR= 40,80MM =0,10=

AGRALE: 6012008059007JG 10  
CIPEC: 023703

AGRALE | VOLARE W12 MA 12000 MWM 4.12TCE 185CV



AGRALE: 6012008059007JG 20

REP. MANGA CPL. P/1LD.=MERITOR= 41,00MM =0,20=

KING PIN KIT 41,00MM =MERITOR= =0,20=

AGRALE: 6012008059007JG 20  
CIPEC: 023709

AGRALE | VOLARE W12 MA 12000 MWM 4.12TCE 185CV



AGRALE: 6012008059007JG 30

REP. MANGA CPL. P/1LD.=MERITOR= 41,10MM =0,30=

KING PIN KIT 41,10MM =MERITOR= =0,30=

AGRALE: 6012008059007JG 30  
CIPEC: 023711

AGRALE | VOLARE W12 MA 12000 MWM 4.12TCE 185CV



AGRALE: 6012099002007

REP. MANGA CPL. P/1LD.=SIFCO=45,55X264,5 =STD=

KING PIN KIT SIFCO 2 SIDES =STD= 45,55X264,5

AGRALE: 6012099002007  
CIPEC: 021416

AGRALE | MA 12.0 MIDIBUS | MA 15.0 MIDIBUS | MA 17.0 MIDIBUS



AGRALE: 6012099002007 10

REP. MANGA CPL. P/1LD.=SIFCO=45,65X264,5 =0,10=

KING PIN KIT COMPLETE SIFCO 2 SIDES-STD 45,65X264

AGRALE: 6012099002007 10  
CIPEC: 021434

AGRALE | MA 12.0 MIDIBUS | MA 15.0 MIDIBUS | MA 17.0 MIDIBUS



AGRALE: 6012099002007 20

REP. MANGA CPL. P/1LD.=SIFCO=45,75X264,5 =0,20=

KING PIN KIT COMPLETE SIFCO 2 SIDES-STD 45,75X264,

AGRALE: 6012099002007 20  
CIPEC: 021436

AGRALE | MA 12.0 MIDIBUS | MA 15.0 MIDIBUS | MA 17.0 MIDIBUS



AGRALE: 6012099002007 30

REP. MANGA CPL. P/1LD.=SIFCO=45,85X264,5 =0,30=

KING PIN KIT COMPLETE SIFCO 2 SIDES-STD 45,85X264,

AGRALE: 6012099002007 30  
CIPEC: 021429

AGRALE | MA 12.0 MIDIBUS | MA 15.0 MIDIBUS | MA 17.0 MIDIBUS



AGRALE: 6012099002007CH 0

REP. MANGA CPL. P/1LD.=SIFCO=45,55X264,5 =STD=

KING PIN KIT SIFCO 2 SIDES =STD= 45,55X264,5

AGRALE: 6012099002007CH 0  
CIPEC: 022214

AGRALE | MA 12.0 MIDIBUS | MA 15.0 MIDIBUS | MA 17.0 MIDIBUS



AGRALE: 6012099002007CH 10

REP. MANGA CPL. P/1LD.=SIFCO=45,65X264,5 =0,10=

KING PIN KIT COMPLETE SIFCO 2 SIDES-STD 45,65X264

AGRALE: 6012099002007CH 10  
CIPEC: 022209

AGRALE | MA 12.0 MIDIBUS | MA 15.0 MIDIBUS | MA 17.0 MIDIBUS



AGRALE: 6012099002007CH 20

REP. MANGA CPL. P/1LD.=SIFCO=45,75X264,5 =0,20=

KING PIN KIT COMPLETE SIFCO 2 SIDES-STD 45,75X264,

AGRALE: 6012099002007CH 20  
CIPEC: 022212

AGRALE | MA 12.0 MIDIBUS | MA 15.0 MIDIBUS



AGRALE: 6012099002007CH 30

REP. MANGA CPL. P/1LD.=SIFCO=45,85X264,5 =0,30=

KING PIN KIT COMPLETE SIFCO 2 SIDES-STD 45,85X264,

AGRALE: 6012099002007CH 30  
CIPEC: 021955

AGRALE | MA 12.0 MIDIBUS | MA 15.0 MIDIBUS | MA 17.0 MIDIBUS



**AGRALE: W08498629**

REP. MANGA CPL. P/2LD.=MERITOR= 31,75MM =STD=

KING PIN REPAIR KIT COMPLETE RH MERITOR 31,75MM SD

AGRALE: W08498629  
CIPEC: 024399

AGRALE | 9200 | MA 10.0 MICROBUS | MA 10.0 TCE | MA 8.5/9.2 E-TRONIC | MA 8.7 MICROBUS | MA 9.2 TCA | MA 9.2 TCE



**AGRALE: W09498629 0**

REP. MANGA CPL. P/1LD.=SIFCO= 33,00X169,3 =STD=

KING PIN KIT =SIFCO= 33,00X169,3 =STD=

AGRALE: W09498629 0  
CIPEC: 024164

AGRALE | 10.000 4,8H MWM EURO V SEM ABS | 10.000 4,8H MWM EURO V COM ABS | MA 10.0 BL MWM 4,8H EURO V | MA 9.2 BL MWM 4,8H EURO V | VOLARE FLY W9 LIMOUSINE EURO III | VOLARE V8 EURO V CUMMINS ISF 3,8 | VOLARE W8 2005 | VOLARE W9 2010 | VOLARE W9 2012 | VOLARE W9 ELETTRONICO | VOLARE W9 FLY-EURO V



**AGRALE: W09498629 10**

REP. MANGA CPL. P/1LD.=SIFCO= 33,10X169,3 =0,10=

KING PIN KIT =SIFCO= 33,10X169,3 =0,10=

AGRALE: W09498629 10  
CIPEC: 024161

AGRALE | 10.000 4,8H MWM EURO V SEM ABS | 10.000 4,8H MWM EURO V COM ABS | VOLARE FLY W9 LIMOUSINE EURO III | VOLARE V8 EURO V CUMMINS ISF 3,8 | VOLARE W9 2012 | VOLARE W9 ELETTRONICO | VOLARE W9 FLY-EURO V



**AGRALE: W09498629 20**

REP. MANGA CPL. P/1LD.=SIFCO= 33,20X169,3 =0,20=

KING PIN KIT =SIFCO= 33,20X169,3 =0,20=

AGRALE: W09498629 20  
CIPEC: 024156

AGRALE | 10.000 4,8H MWM EURO V SEM ABS | 10.000 4,8H MWM EURO V COM ABS | VOLARE FLY W9 LIMOUSINE EURO III | VOLARE V8 EURO V CUMMINS ISF 3,8 | VOLARE W9 2012 | VOLARE W9 ELETTRONICO | VOLARE W9 FLY-EURO V



**AGRALE: W09498629 30**

REP. MANGA CPL. P/1LD.=SIFCO= 33,30X169,3 =0,30=

KING PIN KIT =SIFCO= 33,30X169,3 =0,30=

AGRALE: W09498629 30  
CIPEC: 024153

AGRALE | 10.000 4,8H MWM EURO V SEM ABS | 10.000 4,8H MWM EURO V COM ABS | VOLARE FLY W9 LIMOUSINE EURO III | VOLARE V8 EURO V CUMMINS ISF 3,8 | VOLARE W9 2012 | VOLARE W9 ELETRONICO | VOLARE W9 FLY-EURO V



**AGRALE: W09498629 40**

REP. MANGA CPL. P/1LD.=SIFCO= 33,40X169,3 =0,40=

KING PIN KIT =SIFCO= 33,40X169,3 =0,40=

AGRALE: W09498629 40  
CIPEC: 024158

AGRALE | 10.000 4,8H MWM EURO V SEM ABS | 10.000 4,8H MWM EURO V COM ABS | VOLARE FLY W9 LIMOUSINE EURO III | VOLARE V8 EURO V CUMMINS ISF 3,8 | VOLARE W9 2012 | VOLARE W9 ELETRONICO | VOLARE W9 FLY-EURO V



**AGRALE: W09498629CH 0**

REP. MANGA CPL. P/1LD.=SIFCO= 33,00X169,3 =STD=

KING PIN KIT =SIFCO= 33,00X169,3 =STD=

AGRALE: W09498629CH 0  
CIPEC: 024162

AGRALE | VOLARE FLY W9 LIMOUSINE EURO III | VOLARE W9 2012 | VOLARE W9 ELETRONICO | VOLARE W9 FLY-EURO V



**AGRALE: W09498629CH 10**

REP. MANGA CPL. P/1LD.=SIFCO= 33,10X169,3 =0,10=

KING PIN KIT =SIFCO= 33,10X169,3 =0,10=

AGRALE: W09498629CH 10  
CIPEC: 024150

AGRALE | VOLARE FLY W9 LIMOUSINE EURO III | VOLARE W9 2012 | VOLARE W9 ELETRONICO | VOLARE W9 FLY-EURO V



**AGRALE: W09498629CH 20**

REP. MANGA CPL. P/1LD.=SIFCO= 33,20X169,3 =0,20=

KING PIN KIT =SIFCO= 33,20X169,3 =0,20=

AGRALE: W09498629CH 20  
CIPEC: 024154

AGRALE | VOLARE FLY W9 LIMOUSINE EURO III | VOLARE W9 2012 | VOLARE W9 ELETRONICO  
| VOLARE W9 FLY-EURO V



**AGRALE: W09498629CH 30**

REP. MANGA CPL. P/1LD.=SIFCO= 33,30X169,3 =0,30=

KING PIN KIT =SIFCO= 33,30X169,3 =0,30=

AGRALE: W09498629CH 30  
CIPEC: 024160

AGRALE | VOLARE FLY W9 LIMOUSINE EURO III | VOLARE W9 2012 | VOLARE W9 ELETRONICO  
| VOLARE W9 FLY-EURO V



**AGRALE: W09498629CH 40**

REP. MANGA CPL. P/1LD.=SIFCO= 33,40X169,3 =0,40=

KING PIN KIT =SIFCO= 33,40X169,3 =0,40=

AGRALE: W09498629CH 40  
CIPEC: 024157

AGRALE | VOLARE FLY W9 LIMOUSINE EURO III | VOLARE W9 2012 | VOLARE W9 ELETRONICO  
| VOLARE W9 FLY-EURO V



DAF: 681706

REPARO MANGA EIXO DAF

KING PIN REP.KIT FOR DAF CF/XF ALL W/BRAKE SHOES

CIPEC: 026544

DAF: 681706

DAF | CF TODOS FREIO A TAMBOR | XF TODOS FREIO A TAMBOR



**FORD: 1C453111A**

REP. MANGA CPL. P/1LD.=SIFCO= 33,00X169,3 =STD=

KING PIN KIT =SIFCO= 33,00X169,3 =STD=

CIPEC: 022097

FORD: 1C453111A

FORD | 712 | 814/815 11/2000=09/2002 | 815 | 815 MULTIUSO | 815E | 815S | 816 | 915



**FORD: 1C453111A 10**

REP. MANGA CPL. P/1LD.=SIFCO= 33,10X169,3 =0,10=

KING PIN KIT =SIFCO= 33,10X169,3 =0,10=

CIPEC: 022061

FORD: 1C453111A 10

FORD | 712 | 814/815 11/2000=09/2002 | 815 | 815 MULTIUSO | 815E | 815S | 816 | 915



**FORD: 1C453111A 20**

REP. MANGA CPL. P/1LD.=SIFCO= 33,20X169,3 =0,20=

KING PIN KIT =SIFCO= 33,20X169,3 =0,20=

CIPEC: 021595

FORD: 1C453111A 20

FORD | 712 | 814/815 11/2000=09/2002 | 815 | 815 MULTIUSO | 815E | 815S | 816 | 915



**FORD: 1C453111A 30**

REP. MANGA CPL. P/1LD.=SIFCO= 33,30X169,3 =0,30=

KING PIN KIT =SIFCO= 33,30X169,3 =0,30=

CIPEC: 022038

FORD: 1C453111A 30

FORD | 712 | 814/815 11/2000=09/2002 | 815 | 815 MULTIUSO | 815E | 815S | 816 | 915



**FORD: 1C453111A 40**

REP. MANGA CPL. P/1LD.=SIFCO= 33,40X169,3 =0,40=

KING PIN KIT =SIFCO= 33,40X169,3 =0,40=

CIPEC: 022040

FORD: 1C453111A 40

FORD | 712 | 814/815 11/2000=09/2002 | 815 | 815 MULTIUSO | 815E | 815S | 816 | 915



**FORD: 1C453111ACH 0**

REP. MANGA CPL. P/1LD.=SIFCO= 33,00 =STD= C/CHIME

KING PIN KIT =SIFCO= 33,00X169,3 =STD=

CIPEC: 022046

FORD: 1C453111ACH 0

FORD | 712 | 814/815 11/2000=09/2002 | 815 | 815 MULTIUSO | 815E | 815S | 816 | 915



**FORD: 1C453111ACH 10**

REP. MANGA CPL. P/1LD.=SIFCO= 33,10 =0,10= C/CHIME

KING PIN KIT =SIFCO= 33,10X169,3 =0,10=

CIPEC: 022100

FORD: 1C453111ACH 10

FORD | 712 | 814/815 11/2000=09/2002 | 815 | 815 MULTIUSO | 815E | 815S | 816 | 915



**FORD: 1C453111ACH 20**

REP. MANGA CPL. P/1LD.=SIFCO= 33,20 =0,20= C/CHIME

KING PIN KIT =SIFCO= 33,20X169,3 =0,20=

CIPEC: 022071

FORD: 1C453111ACH 20

FORD | 712 | 814/815 11/2000=09/2002 | 815 | 815 MULTIUSO | 815E | 815S | 816 | 915



**FORD: 1C453111ACH 30**

REP. MANGA CPL. P/1LD.=SIFCO= 33,30 =0,30= C/CHIME

KING PIN KIT =SIFCO= 33,30X169,3 =0,30=

CIPEC: 022076  
 FORD: 1C453111ACH 30  
 FORD | 712 | 814/815 11/2000=09/2002 | 815 | 815 MULTIUSO | 815E | 815S | 816 | 915



**FORD: 1C453111ACH 40**

REP. MANGA CPL. P/1LD.=SIFCO= 33,40 =0,40= C/CHIME

KING PIN KIT =SIFCO= 33,40X169,3 =0,40=

CIPEC: 022062  
 FORD: 1C453111ACH 40  
 FORD | 712 | 814/815 11/2000=09/2002 | 815 | 815 MULTIUSO | 815E | 815S | 816 | 915



**FORD: BD2T3111A**

REP. MANGA CPL. P/1LDS.=MERITOR= 31,35MM =STD=

KING PIN KINT MERITOR 31,35MM =STD=

CIPEC: 020071  
 FORD: BD2T3111A  
 FORD | F600/F13000 APOS 1972 ATE 1992



**FORD: BD2T3111A 10**

REP. MANGA CPL. P/1LD.=MERITOR= 31,45MM =0,10=

KING PIN KIT =MERITOR= 31,45MM =0,10=

CIPEC: 022614  
 FORD: BD2T3111 10 / BD2T3111A 10  
 FORD | F600/F13000 APOS 1972 ATE 1992



**FORD: BD2T3111A 20**

REP. MANGA CPL. P/1LD.=MERITOR= 31,55MM =0,20=

KING PIN KIT =MERITOR= 31,55MM =0,20=

CIPEC: 021342  
 FORD: BD2T3111A 20  
 FORD | F600/F13000 APOS 1972 ATE 1992



**FORD: BD2T3111A 30**

REP. MANGA CPL. P/1LD.=MERITOR= 31,65MM =0,30=

KING PIN KIT =MERITOR= 31,65MM =0,30=

CIPEC: 021354  
 FORD: BD2T3111A 30  
 FORD | F600/F13000 APOS 1972 ATE 1992



**FORD: BD2T3111ACH**

REP. MANGA CPL. P/1LD.=MERITOR= 31,35MM =STD=

KING PIN REPAIR KIT COMPLETE RH MERITOR 31,5MM SDT

CIPEC: 024665  
 FORD: BD2T3111ACH  
 FORD



**FORD: BD2T3111ACH 10**

REP. MANGA CPL. P/1LD.=MERITOR= 31,45MM =0,10=

KING PIN REP. KIT COMPLETE RH MERITOR31,45MMM0,010

CIPEC: 024667  
 FORD: BD2T3111ACH 10  
 FORD



**FORD: BD2T3111ACH 20**

REP. MANGA CPL. P/1LD.=MERITOR= 31,55MM =0,20=

KING PIN KIT RH MERITOR 31,55 =0,20=

CIPEC: 024663  
 FORD: BD2T3111ACH 20  
 FORD



**FORD: BD2T3111ACH 30**

REP. MANGA CPL. P/1LD.=MERITOR= 31,65MM =0,30=

KING PIN KIT MERITOR 31,60MM =0,30=

CIPEC: 024666  
 FORD: BD2T3111ACH 30  
 FORD



**FORD: BE9H3111A 20**

REP. MANGA CPL. P/1LD.=MERITOR= 41,00MM =0,20=

AXLE REPAIR KIT COMPLETE FOR 1 SIDE 41,00MM =0,20=

CIPEC: 021970  
 FORD: BE9H3111A 20 / BF5X3111B 20  
 FORD | 1215 FNH | 1215CUM | 1217 CUMMINS | 1316 | 1316 CHILE | 1317 | F14000HD



**FORD: BE9H3111A 30**

REP. MANGA CPL. P/1LD.=MERITOR= 41,10MM =0,30=

AXLE REPAIR KIT COMPLETE FOR 1 SIDE 41,10MM =0,30=

CIPEC: 022168  
 FORD: BE9H3111A 30 / BF5X3111B 30  
 FORD | 1215 FNH | 1215CUM | 1217 CUMMINS | 1316 | 1316 CHILE | 1317 | F14000HD



**FORD: BE9H3111ACH 0**

REP. MANGA CPL. P/1LD.=MERITOR= 40,80X233MM =STD=

KING PIN KIT =MERITOR= 40,80X233MM =STD=

CIPEC: 023757

FORD: BE9H3111ACH 0

FORD | 1215 FNH | 1215CUM | 1217 CUMMINS | 1316 | 1316 CHILE | 1317 | F14000HD



**FORD: BE9H3111ACH 10**

REP. MANGA CPL. P/1LD.=MERITOR= 40,90X233MM =0,10=

KING PIN KIT =MERITOR= 40,90X233MM =0,10=

CIPEC: 023748

FORD: BE9H3111ACH 10

FORD | 1215 FNH | 1215CUM | 1217 CUMMINS | 1316 | 1316 CHILE | 1317 | F14000HD



**FORD: BE9H3111ACH 20**

REP. MANGA CPL. P/1LD.=MERITOR= 41,00MM =0,20=

KING PIN KIT =MERITOR= 41,00MM =0,20=

CIPEC: 023692

FORD: BE9H3111ACH 20 / BF5X3111BCH 20

FORD | 1215 FNH | 1215CUM | 1217 CUMMINS | 1316 | 1316 CHILE | 1317 | F14000HD



**FORD: BE9H3111ACH 30**

REP. MANGA CPL. P/1LD.=MERITOR= 41,10X233MM =0,30=

KING PIN KIT =MERITOR= 41,10X233MM =0,30=

CIPEC: 023740

FORD: BE9H3111ACH 30

FORD | 1215 FNH | 1215CUM | 1217 CUMMINS | 1316 | 1316 CHILE | 1317 | F14000HD



**FORD: BE9H3111B**

REP. MANGA CPL. P/1LD.=BRAS= 45,55X256,5 =STD=

KING PIN KIT 45,55X256,5 =STD=

CIPEC: 021327

FORD: BE9H3111B

FORD | 1617 CARGO 23/01/91 A 05/11/2000 | 1621 | 1621 BR | 1622 | 1630



**FORD: BE9H3111B 10**

REP. MANGA CPL. P/1LD.=BRAS= 45,65X256,5 =0,10=

KING PIN KIT 45,65X256,5 =0,10=

CIPEC: 021316

FORD: BE9H3111B 10

FORD | 1617 CARGO 23/01/91 A 05/11/2000 | 1621 | 1621 BR | 1622 | 1630



**FORD: BE9H3111B 20**

REP. MANGA CPL. P/1LD.=BRAS= 45,75X256,5 =0,20=

KING PIN KIT 45,75X256,5 =0,20=

CIPEC: 021308

FORD: BE9H3111B 20

FORD | 1617 CARGO 23/01/91 A 05/11/2000 | 1621 | 1621 BR | 1622 | 1630



**FORD: BE9H3111B 30**

REP. MANGA CPL. P/1LD.=BRAS= 45,85X256,5 =0,30=

KING PIN KIT 45,85X256,5 =0,30=

CIPEC: 021330

FORD: BE9H3111B 30

FORD | 1617 CARGO 23/01/91 A 05/11/2000 | 1621 | 1621 BR | 1622 | 1630



**FORD: BE9H3111BCH**

REP. MANGA CPL. P/1LD.=BRAS= 45,55X256,5 =STD=

KING PIN KIT 45,55X256,5 =STD=

CIPEC: 022473

FORD: BE9H3111BCH

FORD | 1617 CARGO 23/01/91 A 05/11/2000 | 1621 | 1621 BR | 1622 | 1630



**FORD: BE9H3111BCH 10**

REP. MANGA CPL. P/1LD.=BRAS= 45,65X256,5 =0,10=

KING PIN KIT 45,65X256,5 =0,10=

CIPEC: 022472

FORD: BE9H3111BCH 10

FORD | 1617 CARGO 23/01/91 A 05/11/2000 | 1621 | 1621 BR | 1622 | 1630



**FORD: BE9H3111BCH 20**

REP. MANGA CPL. P/1LD.=BRAS= 45,75X256,5 =0,20=

KING PIN KIT 45,75X256,5 =0,20=

CIPEC: 022475

FORD: BE9H3111BCH 20

FORD | 1617 CARGO 23/01/91 A 05/11/2000 | 1621 | 1621 BR | 1622 | 1630



**FORD: BE9H3111BCH 30**

REP. MANGA CPL. P/1LD.=BRAS= 45,85X256,5 =0,30=

KING PIN KIT 45,85X256,5 =0,30=

CIPEC: 022474

FORD: BE9H3111BCH 30

FORD | 1617 CARGO 23/01/91 A 05/11/2000 | 1621 | 1621 BR | 1622 | 1630



## FORD: BF5T3111E

REP. MANGA CPL. P/1LD.=BRAS= 28,65X181,5 =STD=

KING PIN KIT 28,65X181,5 =STD=

CIPEC: 021312

FORD: BF5T3111E

FORD | CARGO 814 1996 ATE 2000 | F4000 4BT CUMMINS TURBO 4BT | F4000 MWM 229 | F4000 MWM 4.3L TURBO | F4000 MWM NA



## FORD: BF5T3111E 10

REP. MANGA CPL. P/1LD.=BRAS= 28,75X181,5 =0,10=

KING PIN KIT 28,75X181,5 =0,10=

CIPEC: 021362

FORD: BF5T3111E 10

FORD | CARGO 814 1996 ATE 2000 | F4000 4BT CUMMINS TURBO 4BT | F4000 MWM 229 | F4000 MWM 4.3L TURBO | F4000 MWM NA



## FORD: BF5T3111E 30

REP. MANGA CPL. P/1LD.=BRAS= 28,95X181,5 =0,30=

KING PIN KIT 28,95X181,5 =0,30=

CIPEC: 021368

FORD: BF5T3111E 30

FORD | CARGO 814 1996 ATE 2000 | F4000 4BT CUMMINS TURBO 4BT | F4000 MWM 229 | F4000 MWM 4.3L TURBO | F4000 MWM NA



## FORD: BF5T3111ECH

REP. MANGA CPL. P/1LD.=BRAS= 28,65X181,5 =STD=

KING PIN KIT 28,65X181,5 =STD=

CIPEC: 021373

FORD: BF5T3111ECH

FORD | CARGO 814 1996 ATE 2000 | F4000 4BT CUMMINS TURBO 4BT | F4000 MWM 229 | F4000 MWM 4.3L TURBO | F4000 MWM NA



**FORD: BF5T3111ECH 10**

REP. MANGA CPL. P/1LD.=BRAS= 28,75X181,5 =0,10=

KING PIN KIT 28,75X181,5 =0,10=

CIPEC: 021383

FORD: BF5T3111ECH 10

FORD | CARGO 814 1996 ATE 2000 | F4000 4BT CUMMINS TURBO 4BT | F4000 MWM 229 | F4000 MWM 4.3L TURBO | F4000 MWM NA



**FORD: BF5T3111ECH 20**

REP. MANGA CPL. P/1LD.=BRAS= 28,85X181,5 =0,20=

KING PIN KIT 28,85X181,5 =0,20=

CIPEC: 021446

FORD: BF5T3111ECH 20

FORD | CARGO 814 1996 ATE 2000 | F4000 4BT CUMMINS TURBO 4BT | F4000 MWM 229 | F4000 MWM 4.3L TURBO | F4000 MWM NA



**FORD: BF5T3111ECH 30**

REP. MANGA CPL. P/1LD.=BRAS= 28,95X181,5 =0,30=

KING PIN KIT 28,95X181,5 =0,30=

CIPEC: 021380

FORD: BF5T3111ECH 30

FORD | CARGO 814 1996 ATE 2000 | F4000 4BT CUMMINS TURBO 4BT | F4000 MWM 229 | F4000 MWM 4.3L TURBO | F4000 MWM NA



**FORD: BF5X3111**

REP. MANGA CPL. P/1LD.=SIFCO=45,55X264,5 =STD=

KING PIN KIT SIFCO 2 SIDES =STD= 45,55X264,5

CIPEC: 021415

FORD: BF5X3111 / BF5X3111G / BF5X3111L

FORD | 1215CUM | 1217 CUMMINS | 1316 CHILE | 1317 | 1317E 4X2 | 1415CUM | 1415FNH | 1417 CUMMINS | 1419 | 1421 | 1422 | 1517 4X2 | 1517E 4X2 | 1519 4X2 | 1521 | 1617 | 1621 BR | 1622 | 1630 | 1716 ARG. | 1717 | 1717 4X2 | 1717E 4X2 | 1719 4X2 | 1721 | 1721 BR | 1721 CHILE | 1722 | 1722 4X2 | 1722E 4X2 | 1723 4X2 | 1730 ARG. | 1731 | 1932 4X2 | 1933 4X2 | 2322 | 2421 | 2422 | 2422 6X2 | 2422E 6X2 | 2423 6X2 | 2425 | 2428 6X2 | 2428E 6X2 | 2429 6X2 | 2622 | 2622 6X4 | 2622E 6X4 | 2623 6X4 | 2626 | 2628 6X4 | 2628E 6X4 | 2629 6X4 | 2630 | 2631 | 2632 6X4 | 2632E 6X4 | 2831 | 2932E 6X4 | 3132 6X4 | 3133 6X4 | 3222 | 3224 | 3530 | 4030 | 4031 | 4331 | 4432E 4X2 | 4532E/1832E | 5032E 6X4 | 6332E 6X4



**FORD: BF5X3111 10**

REP. MANGA CPL. P/1LD.=SIFCO=45,65X264,5 =0,10=

KING PIN KIT COMPLETE SIFCO 2 SIDES-STD 45,65X264

CIPEC: 021433

FORD: BF5X3111 10 / BF5X3111G 10

FORD | 1215CUM | 1217 CUMMINS | 1316 CHILE | 1317 | 1317E 4X2 | 1415CUM | 1415FNH | 1417 CUMMINS | 1419 | 1421 | 1422 | 1517 4X2 | 1517E 4X2 | 1519 4X2 | 1521 | 1617 | 1621 BR | 1622 | 1630 | 1716 ARG. | 1717 | 1717 4X2 | 1717E 4X2 | 1719 4X2 | 1721 | 1721 BR | 1721 CHILE | 1722 | 1722 4X2 | 1722E 4X2 | 1723 4X2 | 1730 ARG. | 1731 | 1932 4X2 | 1933 4X2 | 2322 | 2421 | 2422 | 2422 6X2 | 2422E 6X2 | 2423 6X2 | 2425 | 2428 6X2 | 2428E 6X2 | 2429 6X2 | 2622 | 2622 6X4 | 2622E 6X4 | 2623 6X4 | 2626 | 2628 6X4 | 2628E 6X4 | 2629 6X4 | 2630 | 2631 | 2632 6X4 | 2632E 6X4 | 2831 | 2932E 6X4 | 3132 6X4 | 3133 6X4 | 3222 | 3224 | 3530 | 4030 | 4031 | 4331 | 4432E 4X2 | 4532E/1832E | 5032E 6X4 | 6332E 6X4



**FORD: BF5X3111 20**

REP. MANGA CPL. P/1LD.=SIFCO=45,75X264,5 =0,20=

KING PIN KIT COMPLETE SIFCO 2 SIDES-STD 45,75X264,

CIPEC: 021435

FORD: BF5X3111 20 / BF5X3111G 20

FORD | 1215CUM | 1217 CUMMINS | 1316 CHILE | 1317 | 1317E 4X2 | 1415CUM | 1415FNH | 1417 CUMMINS | 1419 | 1421 | 1422 | 1517 4X2 | 1517E 4X2 | 1519 4X2 | 1521 | 1617 | 1621 BR | 1622 | 1630 | 1716 ARG. | 1717 | 1717 4X2 | 1717E 4X2 | 1719 4X2 | 1721 | 1721 BR | 1721 CHILE | 1722 | 1722 4X2 | 1722E 4X2 | 1723 4X2 | 1730 ARG. | 1731 | 1932 4X2 | 1933 4X2 | 2322 | 2421 | 2422 | 2422 6X2 | 2422E 6X2 | 2423 6X2 | 2425 | 2428 6X2 | 2428E 6X2 | 2429 6X2 | 2622 | 2622 6X4 | 2622E 6X4 | 2623 6X4 | 2626 | 2628 6X4 | 2628E 6X4 | 2629 6X4 | 2630 | 2631 | 2632 6X4 | 2632E 6X4 | 2831 | 2932E 6X4 | 3132 6X4 | 3133 6X4 | 3222 | 3224 | 3530 | 4030 | 4031 | 4331 | 4432E 4X2 | 4532E/1832E | 5032E 6X4 | 6332E 6X4



**FORD: BF5X3111 30**

REP. MANGA CPL. P/1LD.=SIFCO=45,85X264,5 =0,30=

KING PIN KIT COMPLETE SIFCO 2 SIDES-STD 45,85X264,

CIPEC: 021428

FORD: BF5X3111 30 / BF5X3111G 30

FORD | 1215CUM | 1217 CUMMINS | 1316 CHILE | 1317 | 1317E 4X2 | 1415CUM | 1415FNH | 1417 CUMMINS | 1419 | 1421 | 1422 | 1517 4X2 | 1517E 4X2 | 1519 4X2 | 1521 | 1617 | 1621 BR | 1622 | 1630 | 1716 ARG. | 1717 | 1717 4X2 | 1717E 4X2 | 1719 4X2 | 1721 | 1721 BR | 1721 CHILE | 1722 | 1722 4X2 | 1722E 4X2 | 1723 4X2 | 1730 ARG. | 1731 | 1932 4X2 | 1933 4X2 | 2322 | 2421 | 2422 | 2422 6X2 | 2422E 6X2 | 2423 6X2 | 2425 | 2428 6X2 | 2428E 6X2 | 2429 6X2 | 2622 | 2622 6X4 | 2622E 6X4 | 2623 6X4 | 2626 | 2628 6X4 | 2628E 6X4 | 2629 6X4 | 2630 | 2631 | 2632 6X4 | 2632E 6X4 | 2831 | 2932E 6X4 | 3132 6X4 | 3133 6X4 | 3222 | 3224 | 3530 | 4030 | 4031 | 4331 | 4432E 4X2 | 4532E/1832E | 5032E 6X4 | 6332E 6X4



**FORD: BF5X3111GCH 0**

REP. MANGA CPL. P/1LD.=SIFCO=45,55X264,5 =STD=

KING PIN KIT SIFCO 2 SIDES =STD= 45,55X264,5

CIPEC: 022213

FORD: BF5X3111CH 0 / BF5X3111GCH 0 / BF5X3111LCH 0

FORD | 1215CUM | 1217 CUMMINS | 1316 CHILE | 1317 | 1317E 4X2 | 1517 4X2 | 1517E 4X2 | 1519 4X2 | 1617 | 1621 BR | 1622 | 1630 | 1716 ARG. | 1717 | 1717 4X2 | 1717E 4X2 | 1719 4X2 | 1721 BR | 1722 | 1722 4X2 | 1722E 4X2 | 1723 4X2 | 1730 ARG. | 1731 | 1932 4X2 | 1933 4X2 | 2421 | 2422 | 2422 6X2 | 2422E 6X2 | 2423 6X2 | 2425 | 2428 6X2 | 2428E 6X2 | 2429 6X2 | 2622 | 2622 6X4 | 2622E 6X4 | 2623 6X4 | 2626 | 2628 6X4 | 2628E 6X4 | 2629 6X4 | 2630 | 2631 | 2632 6X4 | 2632E 6X4 | 2932E 6X4 | 3132 6X4 | 3133 6X4 | 3224 | 3530 | 4030 | 4031 | 4331 | 4432E 4X2 | 4532E/1832E | 5032E 6X4 | 6332E 6X4



**FORD: BF5X3111GCH 10**

REP. MANGA CPL. P/1LD.=SIFCO=45,65X264,5 =0,10=

KING PIN KIT COMPLETE SIFCO 2 SIDES-STD 45,65X264

CIPEC: 022208

FORD: BF5X3111CH 10 / BF5X3111GCH 10 / BF5X3111LCH 10

FORD | 1215CUM | 1217 CUMMINS | 1316 CHILE | 1317 | 1317E 4X2 | 1517 4X2 | 1517E 4X2 | 1519 4X2 | 1617 | 1621 BR | 1622 | 1630 | 1716 ARG. | 1717 | 1717 4X2 | 1717E 4X2 | 1719 4X2 | 1721 BR | 1722 | 1722 4X2 | 1722E 4X2 | 1723 4X2 | 1730 ARG. | 1731 | 1932 4X2 | 1933 4X2 | 2421 | 2422 | 2422 6X2 | 2422E 6X2 | 2423 6X2 | 2425 | 2428 6X2 | 2428E 6X2 | 2429 6X2 | 2622 | 2622 6X4 | 2622E 6X4 | 2623 6X4 | 2626 | 2628 6X4 | 2628E 6X4 | 2629 6X4 | 2630 | 2631 | 2632 6X4 | 2632E 6X4 | 2932E 6X4 | 3132 6X4 | 3133 6X4 | 3224 | 3530 | 4030 | 4031 | 4331 | 4432E 4X2 | 4532E/1832E | 5032E 6X4 | 6332E 6X4



**FORD: BF5X3111GCH 20**

REP. MANGA CPL. P/1LD.=SIFCO=45,75X264,5 =0,20=

KING PIN KIT COMPLETE SIFCO 2 SIDES-STD 45,75X264,

CIPEC: 022211

FORD: BF5X3111CH 20 / BF5X3111GCH 20 / BF5X3111LCH 20

FORD | 1215CUM | 1217 CUMMINS | 1316 CHILE | 1317 | 1317E 4X2 | 1517 4X2 | 1517E 4X2 | 1519 4X2 | 1617 | 1621 BR | 1622 | 1630 | 1716 ARG. | 1717 | 1717 4X2 | 1717E 4X2 | 1719 4X2 | 1721 BR | 1722 | 1722 4X2 | 1722E 4X2 | 1723 4X2 | 1730 ARG. | 1731 | 1932 4X2 | 1933 4X2 | 2421 | 2422 | 2422 6X2 | 2422E 6X2 | 2423 6X2 | 2425 | 2428 6X2 | 2428E 6X2 | 2429 6X2 | 2622 | 2622 6X4 | 2622E 6X4 | 2623 6X4 | 2626 | 2628 6X4 | 2628E 6X4 | 2629 6X4 | 2630 | 2631 | 2632 6X4 | 2632E 6X4 | 2932E 6X4 | 3132 6X4 | 3133 6X4 | 3224 | 3530 | 4030 | 4031 | 4331 | 4432E 4X2 | 4532E/1832E | 5032E 6X4 | 6332E 6X4



**FORD: BF5X3111GCH 30**

REP. MANGA CPL. P/1LD.=SIFCO=45,85X264,5 =0,30=

KING PIN KIT COMPLETE SIFCO 2 SIDES-STD 45,85X264,

CIPEC: 021954

FORD: BF5X3111CH 30 / BF5X3111GCH 30 / BF5X3111LCH 30

FORD | 1215CUM | 1217 CUMMINS | 1316 CHILE | 1317 | 1317E 4X2 | 1517 4X2 | 1517E 4X2 | 1519 4X2 | 1617 | 1621 BR | 1622 | 1630 | 1716 ARG. | 1717 | 1717 4X2 | 1717E 4X2 | 1719 4X2 | 1721 BR | 1722 | 1722 4X2 | 1722E 4X2 | 1723 4X2 | 1730 ARG. | 1731 | 1932 4X2 | 1933 4X2 | 2421 | 2422 | 2422 6X2 | 2422E 6X2 | 2423 6X2 | 2425 | 2428 6X2 | 2428E 6X2 | 2429 6X2 | 2622 | 2622 6X4 | 2622E 6X4 | 2623 6X4 | 2626 | 2628 6X4 | 2628E 6X4 | 2629 6X4 | 2630 | 2631 | 2632 6X4 | 2632E 6X4 | 2932E 6X4 | 3132 6X4 | 3133 6X4 | 3224 | 3530 | 4030 | 4031 | 4331 | 4432E 4X2 | 4532E/1832E | 5032E 6X4 | 6332E 6X4



**IVECO: 1904698**

REP. MANGA EIXO C/ROLAM+RETEN.STRALIS/TRAKKER/

KING PIN KIT W/ BEARING STRALIS/TRAKKER/TECH

CIPEC: 017275  
IVECO: 1904698

IVECO | CURSOR | EUROCARGO | EUROTECH | EUROTRAKKER | NOVO STRALIS | NOVO TRAKKER | ONIBUS 150S21 | ONIBUS 170S28 | ONIBUS CC118E20 GNC | ONIBUS CC118E22 | ONIBUS CC170E22 | STRALIS | TECTOR | TRAKKER



**IVECO: 1904698 P**

REP. MANGA EIXO S/BASE DO PINO STRALIS/TRAKKER/TEC

KING PIN KIT - STRALIS/TRAKKER/TECH

CIPEC: 017276  
IVECO: 1904698 P

IVECO | CURSOR | EUROCARGO | EUROTECH | EUROTRAKKER | NOVO STRALIS | NOVO TRAKKER | ONIBUS 150S21 | ONIBUS 170S28 | ONIBUS CC118E20 GNC | ONIBUS CC118E22 | ONIBUS CC170E22 | STRALIS | TECTOR | TRAKKER



**IVECO: 500053383**

REP. MANGA CPL. P/1LD.=MERITOR= 40,80MM =STD=

AXLE REPAIR KIT COMPLETE FOR 1 SIDE =STD=40,80MM

CIPEC: 022002  
IVECO: 500053383

IVECO | 130V18 VERTIS CAMINHAO 4X2 | 130V19 VERTIS CAMINHAO ECOLINE 4X2



**IVECO: 500053383 10**

REP. MANGA CPL. P/1LD.=MERITOR= 40,90MM =0,10=

AXLE REPAIR KIT COMPLETE FOR 1 SIDE 40,90MM =0,10=

CIPEC: 022036  
IVECO: 500053383 10

IVECO | 130V18 VERTIS CAMINHAO 4X2 | 130V19 VERTIS CAMINHAO ECOLINE 4X2



**IVECO: 500053383 20**

REP. MANGA CPL. P/1LD.=MERITOR= 41,00MM =0,20=

AXLE REPAIR KIT COMPLETE FOR 1 SIDE 41,00MM =0,20=

CIPEC: 021971  
 IVECO: 500053383 20  
 IVECO | 130V18 VERTIS CAMINHAO 4X2 | 130V19 VERTIS CAMINHAO ECOLINE 4X2



**IVECO: 500053383 30**

REP. MANGA CPL. P/1LD.=MERITOR= 41,10MM =0,30=

AXLE REPAIR KIT COMPLETE FOR 1 SIDE 41,10MM =0,30=

CIPEC: 022169  
 IVECO: 500053383 30  
 IVECO | 130V18 VERTIS CAMINHAO 4X2 | 130V19 VERTIS CAMINHAO ECOLINE 4X2



**IVECO: 500053383CH**

REP. MANGA CPL. P/1LD.=MERITOR= 40,80X233MM =STD=

KING PIN KIT =MERITOR= 40,80X233MM =STD=

CIPEC: 023758  
 IVECO: 500053383CH  
 IVECO | VERTIS 130V18 CAMINHAO | VERTIS 130V19 CAMINHAO



**IVECO: 500053383CH 10**

REP. MANGA CPL. P/1LD.=MERITOR= 40,90X233MM =0,10=

AXLE REPAIR KIT COMPLETE FOR 1 SIDE =STD=40,80MM

CIPEC: 024242  
 IVECO: 500053383CH 10  
 IVECO | VERTIS 130V18 CAMINHAO | VERTIS 130V19 CAMINHAO



**IVECO: 500053383CH 20**

REP. MANGA CPL. P/1LD.=MERITOR= 41,00X233MM =-0,20=

AXLE REPAIR KIT COMPLETE FOR 1 SIDE =STD=40,80MM

CIPEC: 024243  
 IVECO: 500053383CH 20  
 IVECO | VERTIS 130V18 CAMINHAO | VERTIS 130V19 CAMINHAO



**IVECO: 500053383CH 30**

REP. MANGA CPL. P/1LD.=MERITOR= 41,10X233MM =-0,30=

AXLE REPAIR KIT COMPLETE FOR 1 SIDE =STD=40,80MM

CIPEC: 024244  
 IVECO: 500053383CH 30  
 IVECO | VERTIS 130V18 CAMINHAO | VERTIS 130V19 CAMINHAO



**IVECO: 500053591**

REP. MANGA CPL. VERTIS 90V16-90V18 (33,00) =STD=

KING PIN KIT VERTIS 90V16-90V18 (33,00) =STD=

CIPEC: 019699  
 IVECO: 500053591  
 IVECO | 90V16 VERTIS CAMINHAO 4X2 | 90V18 VERTIS CAMINHAO 4X2



**IVECO: 500053591 10**

REP. MANGA CPL. VERTIS 90V16-90V18 (33,10) =-0,10=

KING PIN KIT VERTIS 90V16-90V18 (33,10) =-0,10=

CIPEC: 019700  
 IVECO: 500053591 10  
 IVECO | 90V16 VERTIS CAMINHAO 4X2 | 90V18 VERTIS CAMINHAO 4X2



**IVECO: 500053591 20**

REP. MANGA CPL. VERTIS 90V16-90V18 (33,20) =0,20=

KING PIN KIT VERTIS 90V16-90V18 (33,20) =0,20=

CIPEC: 019701  
 IVECO: 500053591 20  
 IVECO | 90V16 VERTIS CAMINHAO 4X2 | 90V18 VERTIS CAMINHAO 4X2



**IVECO: 500053591 30**

REP. MANGA CPL. VERTIS 90V16-90V18 (33,30) =0,30=

KING PIN KIT VERTIS 90V16-90V18 (33,30) =0,30=

CIPEC: 019702  
 IVECO: 500053591 30  
 IVECO | 90V16 VERTIS CAMINHAO 4X2 | 90V18 VERTIS CAMINHAO 4X2



**IVECO: 500053591 40**

REP. MANGA CPL. VERTIS 90V16-90V18 (33,40) =0,40=

KING PIN KIT VERTIS 90V16-90V18 (33,40) =0,40=

CIPEC: 019703  
 IVECO: 500053591 40  
 IVECO | 90V16 VERTIS CAMINHAO 4X2 | 90V18 VERTIS CAMINHAO 4X2



**IVECO: 500053591CH 0**

REP. MANGA CPL. P/1LD.=SIFCO= 33,00 =STD= C/CHIME

KING PIN KIT =SIFCO= 33,00X169,3 =STD=

CIPEC: 022722  
 IVECO: 500053591CH 0  
 IVECO | 90V16 VERTIS CAMINHAO 4X2 | 90V18 VERTIS CAMINHAO 4X2



**IVECO: 500053591CH 10**

REP. MANGA CPL. P/1LD.=SIFCO= 33,10 =0,10= C/CHIME

KING PIN KIT =SIFCO= 33,10X169,3 =0,10=

CIPEC: 022720

IVECO: 500053591CH 10

IVECO | 90V16 VERTIS CAMINHAO 4X2 | 90V18 VERTIS CAMINHAO 4X2



**IVECO: 500053591CH 20**

REP. MANGA CPL. P/1LD.=SIFCO= 33,20 =0,20= C/CHIME

KING PIN KIT =SIFCO= 33,20X169,3 =0,20=

CIPEC: 022723

IVECO: 500053591CH 20

IVECO | 90V16 VERTIS CAMINHAO 4X2 | 90V18 VERTIS CAMINHAO 4X2



**IVECO: 500053591CH 30**

REP. MANGA CPL. P/1LD.=SIFCO= 33,30 =0,30= C/CHIME

KING PIN KIT =SIFCO= 33,30X169,3 =0,30=

CIPEC: 022721

IVECO: 500053591CH 30

IVECO | 90V16 VERTIS CAMINHAO 4X2 | 90V18 VERTIS CAMINHAO 4X2



**IVECO: 500053591CH 40**

REP. MANGA CPL. P/1LD.=SIFCO= 33,40 =0,40= C/CHIME

KING PIN KIT =SIFCO= 33,30X169,3 =0,40=

CIPEC: 022719

IVECO: 500053591CH 40

IVECO | 90V16 VERTIS CAMINHAO 4X2 | 90V18 VERTIS CAMINHAO 4X2



MAN: 81442056037

REP. MANGA EIXO METEOR MAN/VW 52,2 X 235 (STD)

KING PIN REPAIR KIT

CIPEC: 027062

MAN: 81442056030 / 81442056031 / 81442056037 / 81442056038

MAN | CONSTELLATION EURO V 33-460 2021- | METEOR 28-460 | METEOR 29-520 | TGX 28440 |  
TGX 29440 | TGX 29480 | TGX33440



**MERCEDES: 3503300019**

REP. MANGA MBB 51MM (STD)

KING PIN ONE SIDE MBB 51MM =STD=

CIPEC: 025714

MERCEDES: 3503300019

MERCEDES | 1924 | 1929 | 1930 | 1932 | 1933 | 1935 | 1941



**MERCEDES: 3503300019 10**

REP. MANGA MBB 51MM (0,10)

KING PIN ONE SIDE MBB 51MM (0,10)

CIPEC: 025715

MERCEDES: 3503300019 10

MERCEDES | 1924 | 1929 | 1930 | 1932 | 1933 | 1935 | 1941



**MERCEDES: 3503300019 20**

REP. MANGA MBB 51MM (0,20)

KING PIN ONE SIDE 51MM (0,20)

CIPEC: 025716

MERCEDES: 3503300019 20

MERCEDES | 1924 | 1929 | 1930 | 1932 | 1933 | 1935 | 1941



**MERCEDES: 3503300019 30**

REP. MANGA MBB 51MM (0,30)

KING PIN MBB 51MM(0,30)

CIPEC: 025717

MERCEDES: 3503300019 30

MERCEDES | 1924 | 1929 | 1930 | 1932 | 1933 | 1935 | 1941



**MERCEDES: 3643300019**

REP. MANGA MBB 50MM (STD)

KING PIN SET REP. KIT 50MM STD ONE SITE O 371/371R

CIPEC: 025731

MERCEDES: 3643300019

MERCEDES | 1935 | AXOR1933 | AXOR2035 | AXOR2040 | AXOR2044 | AXOR2533 | AXOR2544 | AXOR2640 | AXOR2644 | AXOR2826 | AXOR2831 | AXOR3340 | AXOR3344 | O370 | O371 | O371 R | O371 RS



**MERCEDES: 3643300019 10**

REP. MANGA MBB 50MM (0,10)

KING PIN ONE SIDE MBB 50MM (0,10)

CIPEC: 025732

MERCEDES: 3643300019 10

MERCEDES | 1935 | AXOR1933 | AXOR2035 | AXOR2040 | AXOR2044 | AXOR2533 | AXOR2544 | AXOR2640 | AXOR2644 | AXOR2826 | AXOR2831 | AXOR3340 | AXOR3344 | O370 | O371 | O371 R | O371 RS



**MERCEDES: 3643300019 20**

REP. MANGA MBB 50MM (0,20)

KING PIN ONE SIDE MBB 50MM (0,20)

CIPEC: 025733

MERCEDES: 3643300019 20

MERCEDES | 1935 | AXOR1933 | AXOR2035 | AXOR2040 | AXOR2044 | AXOR2533 | AXOR2544 | AXOR2640 | AXOR2644 | AXOR2826 | AXOR2831 | AXOR3340 | AXOR3344 | O370 | O371 | O371 R | O371 RS



**MERCEDES: 3643300019 30**

REP. MANGA MBB 50MM (0,30)

KIN PIN SET ONE SIDE 50MM (0.30)

CIPEC: 025734

MERCEDES: 3643300019 30

MERCEDES | 1935 | AXOR1933 | AXOR2035 | AXOR2040 | AXOR2044 | AXOR2533 | AXOR2544 | AXOR2640 | AXOR2644 | AXOR2826 | AXOR2831 | AXOR3340 | AXOR3344 | O370 | O371 | O371 R | O371 RS



**MERCEDES: 3763300319**

REP. MANGA MBB 38MM (STD)

KING PIN SET R.KIT ONE SIDE 38MM STD 1113 TO 2213

CIPEC: 025471  
 MERCEDES: 3763300319  
 MERCEDES | FREIO A AR DO 1113 AO 2213



**MERCEDES: 3763300319 10**

REP. MANGA MBB 38MM (0,10)

KING PIN SET COMPLETE MB 38MM 0,10

CIPEC: 025472  
 MERCEDES: 3763300319 10  
 MERCEDES | FREIO A AR DO 1113 AO 2213



**MERCEDES: 3763300319 20**

REP. MANGA MBB 38MM (0,20)

KING PIN SET COMPLETE 38MM 0,20

CIPEC: 025473  
 MERCEDES: 3763300319 20  
 MERCEDES | FREIO A AR DO 1113 AO 2213



**MERCEDES: 3763300319 30**

REP. MANGA MBB 38MM (0,30)

KING PIN REP. KIT COMOLETE MB 38MM 0,30

CIPEC: 025474  
 MERCEDES: 3763300319 30  
 MERCEDES | FREIO A AR DO 1113 AO 2213



**MERCEDES: 3763300319 R1**

REP. MANGA MBB 38MM C/CHIME (0,10)

KING PIN SET COMPLETE MB 38MM 0,10

CIPEC: 028363  
 MERCEDES: 3763300319 R1  
 MERCEDES



**MERCEDES: 3763300319 R2**

REP. MANGA MBB 38MM C/CHIME (0,20)

KING PIN SET COMPLETE 38MM 0,20

CIPEC: 028364  
 MERCEDES: 3763300319 R2  
 MERCEDES



**MERCEDES: 3763300319 R3**

REP. MANGA MBB 38MM C/CHIME (0,30)

KING PIN REP. KIT COMOLETE MB 38MM 0,30

CIPEC: 028365  
 MERCEDES: 3763300319 R3  
 MERCEDES



**MERCEDES: 3763300319**

REP. MANGA MBB 38MM C/CHIME (STD)

KING PIN SET R.KIT ONE SIDE 38MM STD 1113 TO 2213

CIPEC: 028362  
 MERCEDES: 3763300319 RS  
 MERCEDES



**MERCEDES: 6753300019**

REP. MANGA MBB 30MM (STD)

KING PIN SET REP. KIT. 30MM STD ONE SITE 812/912/4

CIPEC: 025710  
 MERCEDES: 6753300019  
 MERCEDES | 812 | 912 | 912LO | 914 | 915 | OF809



**MERCEDES: 6753300019 10**

REP. MANGA MBB 30MM (0,10)

KING PIN REP. KIT COMPLETE MB 30MM 0,10

CIPEC: 025711  
 MERCEDES: 6753300019 10  
 MERCEDES | 812 | 912 | 912LO | 914 | 915 | OF809



**MERCEDES: 6753300019 20**

REP. MANGA MBB 30MM (0,20)

KING PIN REP. KIT COMPLETE MB 30MM 0,20

CIPEC: 025712  
 MERCEDES: 6753300019 20  
 MERCEDES | 812 | 912 | 912LO | 914 | 915 | OF809



**MERCEDES: 6753300019 30**

REP. MANGA MBB 30MM (0,30)

KING PIN SET COMPLETE MB 30MM 0,30

CIPEC: 025713  
 MERCEDES: 6753300019 30  
 MERCEDES | 812 | 912 | 912LO | 914 | 915 | OF809



MERCEDES: 6963300019 10

REP. MANGA MBB 45 MM (0,10)

KING PIN SET MB 45,1 MM

CIPEC: 025879  
 MERCEDES: 3553300319 10 / 6963300019 10  
 MERCEDES | OF1722



MERCEDES: 6963300019 20

REP. MANGA MBB 45 MM (0,20)

CIPEC: 025880  
 MERCEDES: 3553300319 20 / 6963300019 20  
 MERCEDES | OF1722



MERCEDES: 6963300019 30

REP. MANGA MBB 45 MM (0,30)

KING PIN SET MB 45,3MM

CIPEC: 025881  
 MERCEDES: 3553300319 30 / 6963300019 30  
 MERCEDES | OF1722



MERCEDES: 6963300019 C1

REP. MANGA MBB 45 MM C/CHIME (0,10)

KING PIN SET MB 45,1 MM

CIPEC: 028945  
 MERCEDES: 6963300019 C1  
 MERCEDES



**MERCEDES: 6963300019 C3**

REP. MANGA MBB 45 MM C/CHIME (0,30)

KING PIN SET MB 45,3MM

CIPEC: 028947  
MERCEDES: 6963300019 C3  
MERCEDES



**MERCEDES: 9793300019**

REP. MANGA MBB ACCELO (STD)

CIPEC: 025743  
MERCEDES: 9793300019  
MERCEDES | ACCELO 1016 | ACCELO 915 | ACCELO 916 | ACCELO 935



SCANIA: 1405343

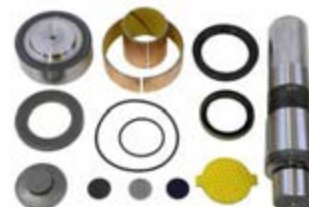
REP. MANGA EIXO C/BUCHAS S/ROL.=ORIG=

KING PIN KIT 114/124 W/BUSHING W/O BEARING OEM

CIPEC: 005858

SCANIA: 1405343 / 1912140

SCANIA | 114 | 124 | 164 | 94 | F94 | K114 | K124 | K94 | P.G.R.



SCANIA: 550257

REP. MANGA EIXO 114/24 =C/ROLAMENTO=

KING PIN KIT 114/124 W/ BEARING

CIPEC: 003836

SCANIA: 550257

SCANIA | 114 | 124 | 164 | 94 | F94 | K114 | K124 | K94 | P.G.R.



SCANIA: 550284

REP. MANGA EIXO 114/24 =ORIG= S/ROL.

KING PIN KIT 114/124 W/O BEARING

CIPEC: 003879

SCANIA: 550284

SCANIA | 114 | 124 | 164 | 94 | F94 | K114 | K124 | K94 | P.G.R.



SCANIA: 550284 A

REP. MANGA EIXO 114/24 =ORIG= S/ROL./RET./BUCHA/P

KING PIN KIT 114/124 W/O BEARING/BUSHING/PIN/RET

CIPEC: 013450

SCANIA: 550284 A

SCANIA | 114 | 124 | 164 | 94 | F94 | K114 | K124 | K94 | P.G.R.



**SCANIA: 550284 P**

REP. MANGA EIXO 114/24 =ORIG= S/ROL./BUCHA/PINO

KING PIN KIT 114/24 W/O BEARING/BUSHING/PIN

CIPEC: 013451  
 SCANIA: 550284 P  
 SCANIA | 114 | 124 | 164 | 94 | F94 | K114 | K124 | K94 | P.G.R.



**SCANIA: 550711 O**

REP. MANGA EIXO AM 55 C/BUCHAS =ORIGINAL=

KING PIN KIT W/ BUSHINGS

CIPEC: 002847  
 SCANIA: 550711 O / 550733 O  
 SCANIA | 110 | 111 | F112 | K112 | L75 | L76 | LK140 | LK141 | P93 | R112 | R113 | R142 | R143 | T112 | T113



**SCANIA: 550712**

REP. MANGA AM 55 =SEM BUCHAS=

KING PIN KIT AM 55 W/O BUSHINGS

CIPEC: 002810  
 SCANIA: 550712  
 SCANIA | 110 | 111 | F112 | K112 | L75 | L76 | LK140 | LK141 | P93 | R112 | R113 | R142 | R143 | T112 | T113



**SCANIA: 550713**

REP. MANGA AM 55 =SEM BUCHAS= =SEM PINO=

KING PIN KIT AM 55 W/O BUSHING - W/O PIN

CIPEC: 006884  
 SCANIA: 550713  
 SCANIA | 110 | 111 | F112 | K112 | L75 | L76 | LK140 | LK141 | P93 | R112 | R113 | R142 | R143 | T112 | T113



**SCANIA: 550714 O**

REP. MANGA EIXO AM 60 C/BUCHAS =ORIGINAL=

KING PIN KIT AM 60 W/ GENUINE BUSHINGS

CIPEC: 002848

SCANIA: 550714 O / 550732 O

SCANIA | F112 | F113 | K112 | K113 | L113 | R112 | R113 | R142 | R143 | T112 | T113 | T142



**SCANIA: 550716**

REP. MANGA AM 60 =SEM BUCHAS= =SEM PINO=

KING PIN KIT AM 60 W/O BUSHINGS - W/O PIN

CIPEC: 006885

SCANIA: 550716

SCANIA | F112 | F113 | K112 | K113 | L113 | R112 | R113 | R142 | R143 | T112 | T113 | T142



**VOLVO: 3090266 V**

REP. MANGA EIXO B12/FH12 (IMP.ANO 94 A 98)

KING PIN KIT - B12/FH12 (94 TO 98)

CIPEC: 006203  
 VOLVO: 270912 V / 271142 V / 276023 V / 276031 V / 3090266 V / 30902662 V /  
 3090276 V  
 VOLVO | FH12



**VOLVO: 6889606 V**

REP. MANGA EIXO =SEM BUCHA ESPACADORA=

KING PIN KIT W/O BUSHING

CIPEC: 008950  
 VOLVO: 270911 V / 271141 V / 276015 V / 276024 V / 276030 V / 276032 V /  
 3090267 V / 30902670 V / 6889606 V  
 VOLVO | B10M | B10R | B12 | B58 | B7R | N10 | N12 | NL10 | NL12



**VOLVO: 6889606 VO**

REP. MANGA EIXO - B10M/B58 N10/12

KING PIN KIT W/ BUSHING - B10M/B58 N10/12

CIPEC: 003230  
 VOLVO: 3090267 VO / 6889606 VO  
 VOLVO | B58 | N10 | N12 | NL10 | NL12



**VOLVO: 6889629 V**

REP. MANGA EIXO - S/BUCHA ESPACADORA

KING PIN KIT W/O BUSHING

CIPEC: 008949  
 VOLVO: 6889629 V  
 VOLVO | N10 | N12 | NL10 | NL12



**VOLVO: 6889629 VA**

REP. MANGA EIXO - C/BUCHA ACETILICA

KING PIN KIT W/ BUSHING

CIPEC: 011480  
VOLVO: 6889629 VA  
VOLVO | N10 | N12 | NL10 | NL12



**VOLVO: 6889629 VO**

REP. MANGA EIXO - C/BUCHA ESP. NL10/NL12

KING PIN KIT W/ BUSHING - NL10/NL12

CIPEC: 003229  
VOLVO: 6889629 VO  
VOLVO | N10 | N12 | NL10 | NL12



**VOLVO: 8127759 V**

REP. MANGA EIXO FH/NH/FM (ANO 99 A 2004)

KING PIN KIT - FH/NH/FM (1999 TO 2004)

CIPEC: 007954  
VOLVO: 8127759 V  
VOLVO



**VOLVO: 85108338 V**

REP. MANGA EIXO FH/NH/FM -PARTIR 04=

KING PIN KIT - FH/NH/FM -UP 2004-

CIPEC: 009745  
VOLVO: 3093731 V / 3173757 V / 85108338 V  
VOLVO | B12B | FH | FH12 | FH16 | FL6 | FM | FM10 | FM12 | FM7 | FM9 | NH12 | VM



**VOLVO: 85109218 V**

REP. MANGA EIXO VM C/ROL. AGULHA

KING PIN KIT - VM

CIPEC: 012872  
VOLVO: 85109218 V  
VOLVO | VM



**VOLVO: 85109218 VA**

REP. MANGA EIXO VM C/ROL.=COMPLETO=

KING PIN KIT - VM W/ BEARING

CIPEC: 016464  
VOLVO: 85109218 VA  
VOLVO | VM



VW: 2P0498629

REP. MANGA CPL. P/1LD =SIFCO= 33,00X157,7 =STD=

KING PIN SET =SIFCO= 33,00X157,7 =STD=

CIPEC: 018957

VW: 2P0498629

VW | 5.140 EOD | 5.140 MWM DELIVERY | 8.150EOD | 8.150MWM DELIVERY



VW: 2P0498629 10

REP. MANGA CPL. P/1LD =SIFCO= 33,10X157,7 =0,10=

KING PIN SET =SIFCO= 33,10X157,7 =0,10=

CIPEC: 018958

VW: 2P0498629 10

VW | 5.140 EOD | 5.140 MWM DELIVERY | 8.150EOD | 8.150MWM DELIVERY



VW: 2P0498629 20

REP. MANGA CPL. P/1LD =SIFCO= 33,20X157,7 =0,20=

KING PIN SET =SIFCO= 33,20X157,7 =0,20=

CIPEC: 018959

VW: 2P0498629 20

VW | 5.140 EOD | 5.140 MWM DELIVERY | 8.150 EOD | 8.150 MWM DELIVERY



VW: 2P0498629 30

REP. MANGA CPL. P/1LD =SIFCO= 33,30X157,7 =0,30=

KING PIN SET =SIFCO= 33,30X157,7 =0,30=

CIPEC: 018960

VW: 2P0498629 30

VW | 5.140 EOD | 5.140 MWM DELIVERY | 8.150 EOD | 8.150 MWM DELIVERY



**VW: 2P0498629 40**

REP. MANGA CPL. P/1LD.=SIFCO= 33,40X157,7 =-0,40=

KING PIN SET =SIFCO= 33,40X157,7 =-0,40=

CIPEC: 018961  
 VW: 2P0498629 40  
 VW | 5.140 EOD | 5.140 MWM DELIVERY | 8.150 EOD | 8.150 MWM DELIVERY



**VW: 2P0498629CH**

REP. MANGA CPL. P/1LD.=SIFCO= 33,00X157,7 =-STD=

KING PIN SET =SIFCO= 33,00X157,7 =-STD=

CIPEC: 019820  
 VW: 2P0498629CH  
 VW | 5.140 EOD | 5.140 MWM DELIVERY | 8.150EOD | 8.150MWM DELIVERY



**VW: 2P0498629CH 10**

REP. MANGA CPL. P/1LD.=SIFCO= 33,10X157,7 =-0,10=

KING PIN SET =SIFCO= 33,10X157,7 =-0,10=

CIPEC: 019821  
 VW: 2P0498629CH 10  
 VW | 5.140 EOD | 5.140 MWM DELIVERY | 8.150EOD | 8.150MWM DELIVERY



**VW: 2P0498629CH 20**

REP. MANGA CPL. P/1LD.=SIFCO= 33,20X157,7 =-0,20=

KING PIN SET =SIFCO= 33,20X157,7 =-0,20=

CIPEC: 019822  
 VW: 2P0498629CH 20  
 VW | 5.140 EOD | 5.140 MWM DELIVERY | 8.150EOD | 8.150MWM DELIVERY



VW: 2P0498629CH 30

REP. MANGA CPL. P/1LD.=SIFCO= 33,30X157,7 =0,30=

KING PIN SET =SIFCO= 33,30X157,7 =0,30=

CIPEC: 019823

VW: 2P0498629CH 30

VW | 5.140 EOD | 5.140 MWM DELIVERY | 8.150EOD | 8.150MWM DELIVERY



VW: 2P0498629CH 40

REP. MANGA CPL. P/1LD.=SIFCO= 33,40X157,7 =0,40=

KING PIN SET =SIFCO= 33,40X157,7 =0,40=

CIPEC: 019824

VW: 2P0498629CH 40

VW | 5.140 EOD | 5.140 MWM DELIVERY | 8.150EOD | 8.150MWM DELIVERY



VW: 2R0498629A

REP. MANGA CPL. P/1LD.=SIFCO= 33,00X169,3 =STD=

KING PIN KIT =SIFCO= 33,00X169,3 =STD=

CIPEC: 010318

VW: 2R0498629A / 2RF498629

VW | 7.120 | 8.100 | 8.120 | 8.120OD | 8.150 | 8.150 EOD | 8.150 MWM DELIVERY | 8.150 OD | 8.150E | 8.150E PLUS | 8.150OD | 9.150E | 9.150E CUMMINS DELIVERY | 9.150EOD | 9.150OD



VW: 2R0498629A 10

REP. MANGA CPL. P/1LD.=SIFCO= 33,10X169,3 =0,10=

KING PIN KIT =SIFCO= 33,10X169,3 =0,10=

CIPEC: 017692

VW: 2R0498629A 10 / 2RF498629 10

VW | 7.120 | 8.100 | 8.120 | 8.120OD | 8.150 | 8.150 EOD | 8.150 MWM DELIVERY | 8.150 OD | 8.150E | 8.150E PLUS | 8.150OD | 9.150E | 9.150E CUMMINS DELIVERY | 9.150EOD | 9.150OD



**VW: 2R0498629A 20**

REP. MANGA CPL. P/1LD.=SIFCO= 33,20X169,3 =0,20=

KING PIN KIT =SIFCO= 33,20X169,3 =0,20=

CIPEC: 017693  
 VW: 2R0498629A 20 / 2RF498629 20  
 VW | 7.120 | 8.100 | 8.120 | 8.120OD | 8.150 | 8.150 EOD | 8.150 MWM DELIVERY | 8.150 OD | 8.150E | 8.150E PLUS | 8.150OD | 9.150E | 9.150E CUMMINS DELIVERY | 9.150EOD | 9.150OD



**VW: 2R0498629A 30**

REP. MANGA CPL. P/1LD.=SIFCO= 33,30X169,3 =0,30=

KING PIN KIT =SIFCO= 33,30X169,3 =0,30=

CIPEC: 017694  
 VW: 2R0498629A 30 / 2RF498629 30  
 VW | 7.120 | 8.100 | 8.120 | 8.120OD | 8.150 | 8.150 EOD | 8.150 MWM DELIVERY | 8.150 OD | 8.150E | 8.150E PLUS | 8.150OD | 9.150E | 9.150E CUMMINS DELIVERY | 9.150EOD | 9.150OD



**VW: 2R0498629A 40**

REP. MANGA CPL. P/1LD.=SIFCO= 33,40X169,3 =0,40=

KING PIN KIT =SIFCO= 33,40X169,3 =0,40=

CIPEC: 018933  
 VW: 2R0498629A 40 / 2RF498629 40  
 VW | 7.120 | 8.100 | 8.120 | 8.120OD | 8.150 | 8.150 EOD | 8.150 MWM DELIVERY | 8.150 OD | 8.150E | 8.150E PLUS | 8.150OD | 9.150E | 9.150E CUMMINS DELIVERY | 9.150EOD | 9.150OD



**VW: 2R0498629ACH 0**

REP. MANGA CPL. P/1LD.=SIFCO= 33,00 =STD= C/CHIME

KING PIN KIT =SIFCO= 33,00X169,3 =STD=

CIPEC: 019870  
 VW: 2R0498629ACH 0  
 VW | 7.120 | 8.100 | 8.120 | 8.120OD | 8.150 | 8.150 EOD | 8.150 MWM DELIVERY | 8.150 OD | 8.150E | 8.150E PLUS | 8.150OD | 9.150E | 9.150E CUMMINS DELIVERY | 9.150EOD | 9.150OD



VW: 2R0498629ACH 10

REP. MANGA CPL. P/1LD.=SIFCO= 33,10 =0,10= C/CHIME

KING PIN KIT =SIFCO= 33,10X169,3 =0,10=

CIPEC: 019871

VW: 2R0498629ACH 10

VW | 7.120 | 8.100 | 8.120 | 8.120OD | 8.150 | 8.150 EOD | 8.150 MWM DELIVERY | 8.150 OD | 8.150E | 8.150E PLUS | 8.150OD | 9.150E | 9.150E CUMMINS DELIVERY | 9.150EOD | 9.150OD



VW: 2R0498629ACH 20

REP. MANGA CPL. P/1LD.=SIFCO= 33,20 =0,20= C/CHIME

KING PIN KIT =SIFCO= 33,20X169,3 =0,20=

CIPEC: 019872

VW: 2R0498629ACH 20

VW | 7.120 | 8.100 | 8.120 | 8.120OD | 8.150 | 8.150 EOD | 8.150 MWM DELIVERY | 8.150 OD | 8.150E | 8.150E PLUS | 8.150OD | 9.150E | 9.150E CUMMINS DELIVERY | 9.150EOD | 9.150OD



VW: 2R0498629ACH 30

REP. MANGA CPL. P/1LD.=SIFCO= 33,30 =0,30= C/CHIME

KING PIN KIT =SIFCO= 33,30X169,3 =0,30=

CIPEC: 019873

VW: 2R0498629ACH 30

VW | 7.120 | 8.100 | 8.120 | 8.120OD | 8.150 | 8.150 EOD | 8.150 MWM DELIVERY | 8.150 OD | 8.150E | 8.150E PLUS | 8.150OD | 9.150E | 9.150E CUMMINS DELIVERY | 9.150EOD | 9.150OD



VW: 2R0498629ACH 40

REP. MANGA CPL. P/1LD.=SIFCO= 33,40 =0,40= C/CHIME

KING PIN KIT =SIFCO= 33,30X169,3 =0,40=

CIPEC: 019874

VW: 2R0498629ACH 40

VW | 7.120 | 8.100 | 8.120 | 8.120OD | 8.150 | 8.150 EOD | 8.150 MWM DELIVERY | 8.150 OD | 8.150E | 8.150E PLUS | 8.150OD | 9.150E | 9.150E CUMMINS DELIVERY | 9.150EOD | 9.150OD



VW: 2R0498629G 0

REP. MANGA CPL. P/1LD.=SIFCO= 33,00X169,3 =STD=

KING PIN KIT =SIFCO= 33,00X169,3 =STD=

CIPEC: 024044

VW: 2R0498629G 0

FORD | 1119 FORD CARGO | VW | 5.150 OD EURO V | 8.150 EOD | 8.160 OD EURO V | 9.150EOD | 9.160 OD | 9.160 OD EURO V



VW: 2R0498629G 10

REP. MANGA CPL. P/1LD.=SIFCO= 33,10X169,3 =0,10=

KING PIN KIT =SIFCO= 33,10X169,3 =0,10=

CIPEC: 024045

VW: 2R0498629G 10

FORD | 1119 FORD CARGO | VW | 8.150 EOD | 9.150EOD | 9.160 OD



VW: 2R0498629G 20

REP. MANGA CPL. P/1LD.=SIFCO= 33,20X169,3 =0,20=

KING PIN KIT =SIFCO= 33,20X169,3 =0,20=

CIPEC: 024046

VW: 2R0498629G 20

FORD | 1119 FORD CARGO | VW | 8.150 EOD | 9.150EOD | 9.160 OD



VW: 2R0498629G 30

REP. MANGA CPL. P/1LD.=SIFCO= 33,30X169,3 =0,30=

KING PIN KIT =SIFCO= 33,30X169,3 =0,30=

CIPEC: 024047

VW: 2R0498629G 30

FORD | 1119 FORD CARGO | VW | 8.150 EOD | 9.150EOD | 9.160 OD



VW: 2R0498629G 40

REP. MANGA CPL. P/1LD.=SIFCO= 33,40X169,3 =0,40=

KING PIN KIT =SIFCO= 33,40X169,3 =0,40=

CIPEC: 024048

VW: 2R0498629G 40

FORD | 1119 FORD CARGO | VW | 8.150 EOD | 9.150EOD | 9.160 OD



VW: 2R0498629GCH 0

REP. MANGA CPL. P/1LD.=SIFCO= 33,00X169,3 =STD=

KING PIN KIT =SIFCO= 33,00X169,3 =STD=

CIPEC: 024141

VW: 2R0498629GCH 0

FORD | 1119 FORD CARGO | VW | 8.150 EOD | 9.150EOD | 9.160 OD



VW: 2R0498629GCH 10

REP. MANGA CPL. P/1LD.=SIFCO= 33,10X169,3 =0,10=

KING PIN KIT =SIFCO= 33,10X169,3 =0,10=

CIPEC: 024142

VW: 2R0498629GCH 10

FORD | 1119 FORD CARGO | VW | 8.150 EOD | 9.150EOD | 9.160 OD



VW: 2R0498629GCH 20

REP. MANGA CPL. P/1LD.=SIFCO= 33,20X169,3 =0,20=

KING PIN KIT =SIFCO= 33,20X169,3 =0,20=

CIPEC: 024143

VW: 2R0498629GCH 20

FORD | 1119 FORD CARGO | VW | 8.150 EOD | 9.150EOD | 9.160 OD



VW: 2R0498629GCH 30

REP. MANGA CPL. P/1LD.=SIFCO= 33,30X169,3 =0,30=

KING PIN KIT =SIFCO= 33,30X169,3 =0,30=

CIPEC: 024144  
 VW: 2R0498629GCH 30  
 FORD | 1119 FORD CARGO | VW | 8.150 EOD | 9.150EOD | 9.160 OD



VW: 2R0498629GCH 40

REP. MANGA CPL. P/1LD.=SIFCO= 33,40X169,3 =0,40=

KING PIN KIT =SIFCO= 33,40X169,3 =0,40=

CIPEC: 024145  
 VW: 2R0498629GCH 40  
 FORD | 1119 FORD CARGO | VW | 8.150 EOD | 9.150EOD | 9.160 OD



VW: 2R4498629

REP. MANGA CPL. P/1LD.=MERITOR= 31,75MM =STD=

KING PIN KIT =MERITOR= 31,75MM =STD=

CIPEC: 024383  
 VW: 2R4498629  
 VW | 8.150 EOD EIXO BITOLA MODIFICADA | 9.150 EOD EIXO BITOLA MODIFICADA | 9.150 WORKER



VW: 2R4498629CH

REP. MANGA CPL. P/1LD.=MERITOR= 31,75MM =STD=

KING PIN KIT =MERITOR= 31,75MM =STD=

CIPEC: 024387  
 VW: 2R4498629CH  
 VW | 8.150 EOD EIXO BITOLA MODIFICADA | 9.150 EOD EIXO BITOLA MODIFICADA



VW: 2T0498445A

REP. MANGA CPL.P/1LD 120MM STD

KING PIN SET

CIPEC: 027963

VW: 2T0498445A

MAN | 17.190 ADVANTECH MAN | 17.280 ADVANTECH MAN | 19.330T ADVANTECH MAN | 24.280 ADVANTECH MAN | 25.330T ADVANTECH MAN | 26.330T ADVANTECH MAN | 26.360T ADVANTECH MAN | 26.390T ADVANTECH MAN | 26.420T ADVANTECH MAN | VW | 17.250E CONSTELLATION | 17.320E CONSTELLATION | 19.320E CONSTELLATION | 19.370E CONSTELLATION | 24.250E CONSTELLATION | 24.320E CONSTELLATION | 25.320E CONSTELLATION | 25.370E CONSTELLATION | 26.370E CONSTELLATION



VW: 2T0498445A 20

REP. MANGA CPL.P/1LD 120MM 45,75X264,5

KING PIN SET

CIPEC: 027977

VW: 2T0498445A 20

VW



VW: 2T0498445A C2

REP. MANGA CPL.CHAVETA LONGA PINO CURTO 0,20

KING PIN SET

CIPEC: 028388

VW: 2T0498445A C2

VW



VW: 2T0498445A C3

REP. MANGA CPL.CHAVETA LONGA PINO CURTO 0,30

KING PIN SET

CIPEC: 028389

VW: 2T0498445A C3

VW



VW: 2T0498445A CS

REP. MANGA CPL.CHAVETA LONGA PINO CURTO STD

KING PIN SET

CIPEC: 028386  
VW: 2T0498445A CS  
vw



VW: 2T0498445A X0

REP. MANGA CPL.P/1LD 120MM STD (S/TAMPA)

KING PIN SET

CIPEC: 027975  
VW: 2T0498445A X0  
vw



VW: 2T0498445A X1

REP. MANGA CPL.P/1LD 120MM 45,65X264,5 (S/TAMPA)

KING PIN SET

CIPEC: 027979  
VW: 2T0498445A X1  
vw



VW: 2T0498445A X2

REP. MANGA CPL.P/1LD 120MM 45,75X264,5 (S/TAMPA)

KING PIN SET

CIPEC: 027980  
VW: 2T0498445A X2  
vw



VW: 2TD498629

REP. MANGA CPL. P/1LD.=MERITOR= 40,80X225,0MM =STD

KING PIN SET 40,80X225,0MM =STD= MERITOR

CIPEC: 010319

VW: 2TD498629 / 805795

VW | 13.150 | 13.170 | 13.170E | 13.180 | 13.190 | 15.170E



VW: 2TD498629 10

REP. MANGA CPL. P/1LD.=MERITOR= 40,90X225MM =0,10=

KING PIN SET 40,90X225,00MM =0,10= MERITOR

CIPEC: 019369

VW: 2TD498629 10 / 805795 10

VW | 13.150 | 13.170 | 13.170E | 13.180 | 13.190 | 15.170E



VW: 2TD498629 20

REP. MANGA CPL. P/1LD.=MERITOR= 41,00X225MM=0,20

KING PIN SET 41,00X225,00MM =0,20= MERITOR

CIPEC: 019370

VW: 2TD498629 20 / 807795 20

VW | 13.150 | 13.170 | 13.170E | 13.180 | 13.190 | 15.170E



VW: 2TD498629 30

REP. MANGA CPL. P/1LD.=MERITOR= 41,10X225MM =0,30=

KING PIN SET 41,10X225,00MM =0,30= MERITOR

CIPEC: 019371

VW: 2TD498629 30 / 805795 30

VW | 13.150 | 13.170 | 13.170E | 13.180 | 13.190 | 15.170E



VW: 2TD498629CH 0

REP. MANGA CPL. P/1LD.=MERITOR= 40,80X225MM=STD=

KING PIN SET 40,80X225MM =STD= MERITOR

CIPEC: 019858

VW: 2TD498629CH 0

VW | 13.150 | 13.170 | 13.170E | 13.180 | 13.190 | 15.170E



VW: 2TD498629CH 10

REP. MANGA CPL. P/1LD.=MERITOR= 40,90X225MM =0,10=

KING PIN SET 40,90X225MM =0,10= MERITOR

CIPEC: 019859

VW: 2TD498629CH 10

VW | 13.150 | 13.170 | 13.170E | 13.180 | 13.190 | 15.170E



VW: 2TD498629CH 20

REP. MANGA CPL. P/1LD.=MERITOR= 41,00X225MM =0,20=

KING PIN SET 41,00X225MM =0,20= MERITOR

CIPEC: 019860

VW: 2TD498629CH 20

VW | 13.150 | 13.170 | 13.170E | 13.180 | 13.190 | 15.170E



VW: 2TD498629CH 30

REP. MANGA CPL. P/1LD.=MERITOR= 41,10X225MM =0,30=

KING PIN SET 41,10X225MM =0,30= MERITOR

CIPEC: 019861

VW: 2TD498629CH 30

VW | 13.150 | 13.170 | 13.170E | 13.180 | 13.190 | 15.170E



VW: 2V5498619A

REPARO MANGA EIXO VW/MAN METEOR

CIPEC: 027038

VW: 2V5498619A

MAN | CONSTELLATION EURO V 33-460 2021- | METEOR 28-460 | METEOR 29-520 | TGX 28440 | TGX 29440 | TGX 29480 | TGX33440 | VW



VW: 2VC498629

REP. MANGA CPL. P/1LD.=MERITOR= 31,35MM =STD=

KING PIN KIT =MERITOR= 31,35MM =STD=

CIPEC: 010317

VW: 2R0498629 / 2VC498629 / 805709

AGRALE | VOLARE AFRICA SUL W8-RHD | VOLARE W8 | VOLARE W8 SEGUNDA EDICAO | VW | 5.140 EOD | 5.140 MWM DELIVERY | 7.100 | 7.120 | 8.100 | 8.120 | 8.120OD | 8.140 | 8.140CE | 8.140CKD | 8.140CO | 8.150 | 8.150 EOD | 8.150 MWM DELIVERY | 8.150 OD | 8.150E | 8.150OD | 9.150E | 9.150EOD | 9.150OD



VW: 2VC498629 10

REP. MANGA CPL. P/1LD.=MERITOR= 31,45MM =0,10=

KING PIN KIT =MERITOR= 31,45MM =0,10=

CIPEC: 017695

VW: 2R0498629 10 / 2VC498629 10

AGRALE | VOLARE AFRICA SUL W8-RHD | FORD | 814 | 815 | VW | 5.140 EOD | 5.140 MWM DELIVERY | 7.100 | 7.120 | 8.100 | 8.120 | 8.120OD | 8.140 | 8.140CE | 8.140CKD | 8.140CO | 8.150 | 8.150 EOD | 8.150 MWM DELIVERY | 8.150 OD | 8.150E | 8.150OD | 9.150E | 9.150EOD | 9.150OD



VW: 2VC498629 20

REP. MANGA CPL. P/1LD.=MERITOR= 31,55MM =0,20=

KING PIN KIT =MERITOR= 31,55MM =0,20=

CIPEC: 017696

VW: 2R0498629 20 / 2VC498629 20

AGRALE | VOLARE AFRICA SUL W8-RHD | FORD | 814 | 815 | VW | 5.140 EOD | 5.140 MWM DELIVERY | 7.100 | 7.120 | 8.100 | 8.120 | 8.120OD | 8.140 | 8.140CE | 8.140CKD | 8.140CO | 8.150 | 8.150 EOD | 8.150 MWM DELIVERY | 8.150 OD | 8.150E | 8.150OD | 9.150E | 9.150EOD | 9.150OD



VW: 2VC498629 30

REP. MANGA CPL. P/1LD.=MERITOR= 31,65MM =0,30=

KING PIN KIT =MERITOR= 31,65MM =0,30=

CIPEC: 017697

VW: 2R0498629 30 / 2VC498629 30

AGRALE | VOLARE AFRICA SUL W8-RHD | FORD | 814 | 815 | VW | 5.140 EOD | 5.140 MWM DELIVERY | 7.100 | 7.120 | 8.100 | 8.120 | 8.120OD | 8.140 | 8.140CE | 8.140CKD | 8.140CO | 8.150 | 8.150 EOD | 8.150 MWM DELIVERY | 8.150 OD | 8.150E | 8.150OD | 8.150E | 8.150OD | 9.150E | 9.150EOD | 9.150OD



VW: 2VC498629CH 0

REP. MANGA CPL. P/1LD.=MERITOR= 31,35MM =STD=

KING PIN KIT =MERITOR= 31,35MM =STD=

CIPEC: 019866

VW: 2R0498629CH 0 / 2VC498629CH 0

FORD | 814 | 815 | VW | 5.140 EOD | 5.140 MWM DELIVERY | 7.100 | 7.120 | 8.100 | 8.120 | 8.120OD | 8.140 | 8.140CE | 8.140CKD | 8.140CO | 8.150 | 8.150 EOD | 8.150 MWM DELIVERY | 8.150 OD | 8.150E | 8.150OD | 9.150E | 9.150EOD | 9.150OD



VW: 2VC498629CH 10

REP. MANGA CPL. P/1LD.=MERITOR= 31,45MM =0,10=

KING PIN KIT =MERITOR= 31,45MM =0,10=

CIPEC: 019867

VW: 2R0498629CH 10 / 2VC498629CH 10

FORD | 814 | 815 | VW | 5.140 EOD | 5.140 MWM DELIVERY | 7.100 | 7.120 | 8.100 | 8.120 | 8.120OD | 8.140 | 8.140CE | 8.140CKD | 8.140CO | 8.150 | 8.150 EOD | 8.150 MWM DELIVERY | 8.150 OD | 8.150E | 8.150OD | 9.150E | 9.150EOD | 9.150OD



VW: 2VC498629CH 20

REP. MANGA CPL. P/1LD.=MERITOR= 31,55MM =0,20=

KING PIN KIT =MERITOR= 31,55MM =0,20=

CIPEC: 019868

VW: 2R0498629CH 20 / 2VC498629CH 20

FORD | 814 | 815 | VW | 5.140 EOD | 5.140 MWM DELIVERY | 7.100 | 7.120 | 8.100 | 8.120 | 8.120OD | 8.140 | 8.140CE | 8.140CKD | 8.140CO | 8.150 | 8.150 EOD | 8.150 MWM DELIVERY | 8.150 OD | 8.150E | 8.150OD | 9.150E | 9.150EOD | 9.150OD



**VW: 2VC498629CH 30**

REP. MANGA CPL. P/1LD.=MERITOR= 31,65MM =0,30=

KING PIN KIT =MERITOR= 31,65MM =0,30=

CIPEC: 019869

VW: 2R0498629CH 30 / 2VC498629CH 30

FORD | 814 | 815 | VW | 5.140 EOD | 5.140 MWM DELIVERY | 7.100 | 7.120 | 8.100 | 8.120 | 8.120OD | 8.140 | 8.140CE | 8.140CKD | 8.140CO | 8.150 | 8.150 EOD | 8.150 MWM DELIVERY | 8.150 OD | 8.150E | 8.150OD | 9.150E | 9.150EOD | 9.150OD



**VW: T06498629**

REP. MANGA CPL. P/1LD.=BRAS= 28,65X181,5 =STD=

KING PIN KIT 28,65X181,5 =STD=

CIPEC: 007857

VW: 2RD498629 / 805656 / T06498629

FORD | 814/815 05/1996=11/2000 | VW | 6.80 | 6.90 | 7.100 | 7.110 | 7.110S | 7.120 | 7.90S | 8.100 | 8.120 | 8.140 | 8.150 | L.80



**VW: T06498629 10**

REP. MANGA CPL. P/1LD.=BRAS= 28,75X181,5 =0,10=

KING PIN KIT 28,75X181,5 =0,10=

CIPEC: 017698

VW: 2RD498629 10 / 805665 10 / T06498629 10

FORD | 814/815 05/1996=11/2000 | VW | 6.80 | 6.90 | 7.100 | 7.110 | 7.110S | 7.120 | 7.90S | 8.100 | 8.120 | 8.140 | 8.150 | L.80



**VW: T06498629 20**

REP. MANGA CPL. P/1LD.=BRAS= 28,85X181,5 =0,20=

KING PIN KIT 28,85X181,5 =0,20=

CIPEC: 017699

VW: 2RD498629 20 / 805665 20 / T06498629 20

FORD | 814/815 05/1996=11/2000 | VW | 6.80 | 6.90 | 7.100 | 7.110 | 7.110S | 7.120 | 7.90S | 8.100 | 8.120 | 8.140 | 8.150 | L.80



**VW: T06498629 30**

REP. MANGA CPL. P/1LD.=BRAS= 28,95X181,5 =0,30=

KING PIN KIT 28,95X181,5 =0,30=

CIPEC: 017700  
 VW: 2RD498629 30 / T06498629 30  
 FORD | 814/815 05/1996=11/2000 | VW | 6.80 | 6.90 | 7.100 | 7.110 | 7.110S | 7.120 | 7.90S | 8.100 | 8.120 | 8.140 | 8.150 | L.80



**VW: T06498629CH 0**

REP. MANGA CPL. P/1LD.=BRAS= 28,65X181,5 =STD=

KING PIN KIT 28,65X181,5 =STD=

CIPEC: 019846  
 VW: 2RD498629CH / T06498629CH 0  
 VW | 6.80 | 6.90 | 7.100 | 7.110S | 7.90S | 8.100 | 8.140 | L.80



**VW: T06498629CH 10**

REP. MANGA CPL. P/1LD.=BRAS= 28,75X181,5 =0,10=

KING PIN KIT 28,75X181,5 =0,10=

CIPEC: 019847  
 VW: 2RD498629CH 10 / T06498629CH 10  
 VW | 6.80 | 6.90 | 6.90S | 7.100 | 7.110S | 7.90S | 8.100 | 8.140 | L.80



**VW: T06498629CH 20**

REP. MANGA CPL. P/1LD.=BRAS= 28,85X181,5 =0,20=

KING PIN KIT 28,85X181,5 =0,20=

CIPEC: 019848  
 VW: 2RD498629CH 20 / T06498629CH 20  
 VW | 6.80 | 6.90 | 6.90S | 7.100 | 7.110S | 7.90S | 8.100 | 8.140 | L.80



VW: T06498629CH 30

REP. MANGA CPL. P/1LD.=BRAS= 28,95X181,5 =0,30=

KING PIN KIT 28,95X181,5 =0,30=

CIPEC: 019849  
 VW: 2RD498629CH 30 / T06498629CH 30  
 VW | 6.80 | 6.90 | 6.90S | 7.100 | 7.110S | 7.90S | 8.100 | 8.140 | L.80



VW: T11498629

REP. MANGA CPL. P/1LD.=MERITOR= 40,80X233MM =STD=

AXLE REPAIR KIT COMPLETE FOR 1 SIDE =STD=40,80MM

CIPEC: 005428  
 VW: 2S0498445 / 805687 / T11498629  
 VW | 11.130 | 11.140 | 12.140 | 12.140H | 12.140T | 12.170BT | 13.130 | 14.140



VW: T11498629 10

REP. MANGA CPL. P/1LD.=MERITOR= 40,90X233MM =0,10=

AXLE REPAIR KIT COMPLETE FOR 1 SIDE 40,90X233MM =0

CIPEC: 019366  
 VW: 2S0498445 10 / T11498629 10  
 VW | 11.130 | 11.140 | 12.140 | 12.140H | 12.140T | 12.170 | 12.170BT | 13.130 | 14.140



VW: T11498629 20

REP. MANGA CPL. P/1LD.=MERITOR= 41,00X233MM=0,20=

AXLE REPAIR KIT COMPLETE FOR 1 SIDE 41,00X233MM =0

CIPEC: 019367  
 VW: 2S0498445 20 / T11498629 20  
 VW | 11.130 | 11.140 | 12.140 | 12.140H | 12.140T | 12.170BT | 13.130 | 14.140



**VW: T11498629 30**

REP. MANGA CPL. P/1LD.=MERITOR= 41,10X233MM =0,30=

AXLE REPAIR KIT COMPLETE FOR 1 SIDE 41,10X233MM =0

CIPEC: 019368  
 VW: 2S0498445 30 / T11498629 30  
 VW | 11.130 | 11.140 | 12.140 | 12.140H | 12.140T | 12.170BT | 13.130 | 14.140



**VW: T11498629CH 0**

REP. MANGA CPL. P/1LD.=MERITOR= 40,80X233MM =STD=

AXLE REPAIR KIT COMPLETE FOR 1 SIDE 40,80X233MM =S

CIPEC: 019854  
 VW: T11498629CH 0  
 VW | 11.130 | 11.140 | 12.140 | 12.140H | 12.140T | 12.170BT | 13.130 | 14.140



**VW: T11498629CH 10**

REP. MANGA CPL. P/1LD.=MERITOR= 40,90X233MM =0,10=

AXLE REPAIR KIT COMPLETE FOR 1 SIDE 40,90X233MM =0

CIPEC: 019855  
 VW: T11498629CH 10  
 VW | 11.130 | 11.140 | 12.140 | 12.140H | 12.140T | 12.170BT | 13.130 | 14.140



**VW: T11498629CH 20**

REP. MANGA CPL. P/1LD.=MERITOR= 41,00X233MM=0,20=

AXLE REPAIR KIT COMPLETE FOR 1 SIDE =STD=40,80MM

CIPEC: 019856  
 VW: T11498629CH 20  
 VW | 11.130 | 11.140 | 12.140 | 12.140H | 12.140T | 12.170BT | 13.130 | 14.140



VW: T11498629CH 30

REP. MANGA CPL. P/1LD.=MERITOR= 41,10X233MM =0,30=

AXLE REPAIR KIT COMPLETE FOR 1 SIDE =STD=40,80MM

CIPEC: 019857

VW: T11498629CH 30

VW | 11.130 | 11.140 | 12.140 | 12.140H | 12.140T | 12.170BT | 13.130 | 14.140



VW: T16498629

REP. MANGA CPL. P/1LD.=SIFCO=45,55X264,5 =STD=

KING PIN KIT SIFCO 2 SIDES =STD= 45,55X264,5

CIPEC: 005429

VW: 2VF498629 / T16498629 / TAR498629

VW | 12.180 | 14.150 | 14.170BT | 14.180 | 14.200 | 14.210 | 14.220 | 15.190 | 15.170 | 15.170E | 15.180 | 15.180E | 15.180E CONSTELLATION | 15.180EOD | 15.190E | 15.190EOD | 16.170 | 16.180CO | 16.200 | 16.210 | 16.210CO | 16.220 | 16.300 | 17.180 CUMMINS EURO 3 | 17.180 MWM EURO 3 | 17.210 | 17.210OD | 17.220 | 17.220 CUMMINS EURO 3 | 17.220 MWM EURO 2 | 17.220 MWM EURO 3 | 17.250E | 17.250E CONSTELLATION | 17.300 | 17.310 | 17.320E CONSTELLATION | 18.310 | 19.320E CONSTELLATION | 19.370 CONSTELLATION | 23.210 | 23.220 | 23.250E | 23.310 | 24.220 CUMMINS EURO 3 | 24.220 MWM EURO 3 | 24.250 | 24.250E | 25.320 CONSTELLATION | 25.370E CONSTELLATION | 26.220 | 26.260 | 26.260 CONSTELLATION | 26.260E | 26.300 | 26.310 | 31.260 | 31.260 CONSTELLATION | 31.260E | 31.310 | 31.320E CONSTELLATION | 31.370E CONSTELLATION | 35.300 | 35.300H | 40.300 | 40.300 LEITO



VW: T16498629 10

REP. MANGA CPL. P/1LD.=SIFCO=45,65X264,5 =0,10=

KING PIN KIT COMPLETE SIFCO 2 SIDES =STD= 45,65X26

CIPEC: 017685

VW: T16498629 10 / TAR498629 10

VW | 12.180 | 14.150 | 14.170BT | 14.180 | 14.200 | 14.210 | 14.220 | 15.190 | 15.170 | 15.170E | 15.180 | 15.180E | 15.180E CONSTELLATION | 15.180EOD | 15.190E | 15.190EOD | 16.170 | 16.180CO | 16.200 | 16.210 | 16.210CO | 16.220 | 16.300 | 17.180 CUMMINS EURO 3 | 17.180 MWM EURO 3 | 17.210 | 17.210OD | 17.220 | 17.220 CUMMINS EURO 3 | 17.220 MWM EURO 2 | 17.220 MWM EURO 3 | 17.250E | 17.250E CONSTELLATION | 17.300 | 17.310 | 17.320E CONSTELLATION | 18.310 | 19.320E CONSTELLATION | 19.370 CONSTELLATION | 23.210 | 23.220 | 23.250E | 23.310 | 24.220 CUMMINS EURO 3 | 24.220 MWM EURO 3 | 24.250 | 24.250E | 24.250ECONSTELLATION | 24.320ECONSTELLATION | 25.320 CONSTELLATION | 25.370E CONSTELLATION | 26.220 | 26.260 | 26.260 CONSTELLATION | 26.260E | 26.300 | 26.310 | 31.260 | 31.260 CONSTELLATION | 31.260E | 31.310 | 31.320E CONSTELLATION | 31.370E CONSTELLATION | 35.300 | 35.300H | 40.300 | 40.300 LEITO



VW: T16498629 20

REP. MANGA CPL. P/1LD.=SIFCO=45,75X264,5 =0,20=

KING PIN KIT COMPLETE SIFCO 2 SIDES =0,20= 45,75X2

CIPEC: 017687

VW: 2VF498629 20 / T16498629 20 / TAR498629 20

VW | 12.180 | 14.150 | 14.170BT | 14.180 | 14.200 | 14.210 | 14.220 | 15.190 | 15.170 | 15.170E | 15.180 | 15.180E | 15.180E CONSTELLATION | 15.180EOD | 15.190E | 15.190EOD | 16.170 | 16.180CO | 16.200 | 16.210 | 16.210CO | 16.220 | 16.300 | 17.180 CUMMINS EURO 3 | 17.180 MWM EURO 3 | 17.210 | 17.210OD | 17.220 | 17.220 CUMMINS EURO 3 | 17.220 MWM EURO 2 | 17.220 MWM EURO 3 | 17.250E | 17.250E CONSTELLATION | 17.300 | 17.310 | 17.320E CONSTELLATION | 18.310 | 19.320E CONSTELLATION | 19.370 CONSTELLATION | 23.210 | 23.220 | 23.250E | 23.310 | 24.220 CUMMINS EURO 3 | 24.220 MWM EURO 3 | 24.250 | 24.250E | 24.250ECONSTELLATION | 24.320ECONSTELLATION | 25.320 CONSTELLATION | 25.370E CONSTELLATION | 26.220 | 26.260 | 26.260 CONSTELLATION | 26.260E | 26.300 | 26.310 | 31.260 | 31.260 CONSTELLATION | 31.260E | 31.310 | 31.320E CONSTELLATION | 31.370E CONSTELLATION | 35.300 | 35.300H | 40.300 | 40.300 LEITO



VW: T16498629 30

REP. MANGA CPL. P/1LD.=SIFCO=45,85X264,5 =0,30=

KING PIN KIT COMPLETE SIFCO 2 SIDES =0,30= 45,85X2

CIPEC: 017688

VW: 2VF498629 30 / T16498629 30 / TAR498629 30

VW | 12.180 | 14.150 | 14.170BT | 14.180 | 14.200 | 14.210 | 14.220 | 15-190 | 15.170 | 15.170E | 15.180 | 15.180E | 15.180E CONSTELLATION | 15.180EOD | 15.190E | 15.190EOD | 16.170 | 16.180CO | 16.200 | 16.210 | 16.210CO | 16.220 | 16.300 | 17.180 CUMMINS EURO 3 | 17.180 MWM EURO 3 | 17.210 | 17.210OD | 17.220 | 17.220 CUMMINS EURO 3 | 17.220 MWM EURO 2 | 17.220 MWM EURO 3 | 17.250E | 17.250E CONSTELLATION | 17.300 | 17.310 | 17.320E CONSTELLATION | 18.310 | 19.320E CONSTELLATION | 19.370 CONSTELLATION | 23.210 | 23.220 | 23.250E | 23.310 | 24.220 CUMMINS EURO 3 | 24.220 MWM EURO 3 | 24.250 | 24.250E | 24.250ECONSTELLATION | 24.320ECONSTELLATION | 25.320 CONSTELLATION | 25.370E CONSTELLATION | 26.220 | 26.260 | 26.260 CONSTELLATION | 26.260E | 26.300 | 26.310 | 31.260 | 31.260 CONSTELLATION | 31.260E | 31.310 | 31.320E CONSTELLATION | 31.370E CONSTELLATION | 35.300 | 35.300H | 40.300 | 40.300 LEITO



VW: T16498629A

REP. MANGA CPL. P/1LD.=BRAS= 45,55X256,5 =STD=

KING PIN KIT 45,55X256,5 =STD=

CIPEC: 007858

VW: T16498629A

VW | 13.170E | 13.180E | 14.150 | 14.200 | 15.170 | 15.170E | 15.180 | 15.180E | 15.190E | 17.210 | 17.300 | 17.310 | 23.210 | 23.310



VW: T16498629A 10

REP. MANGA CPL. P/1LD.=BRAS= 45,65X256,5 =0,10=

KING PIN KIT 45,65X256,5 =0,10=

CIPEC: 017689

VW: T16498629A 10

VW | 13.170E | 13.180E | 14.150 | 14.200 | 15.170 | 15.170E | 15.180 | 15.180E | 15.190E | 17.210 | 17.300 | 17.310 | 23.210 | 23.310



VW: T16498629A 20

REP. MANGA CPL. P/1LD.=BRAS= 45,75X256,5 =0,20=

KING PIN KIT COMPLETE ONE SIDE 45,75X256,5 0,20

CIPEC: 017690

VW: T16498629A 20

VW | 13.170E | 13.180E | 14.150 | 14.200 | 15.170 | 15.170E | 15.180 | 15.180E | 15.190E | 17.210 | 17.300 | 17.310 | 23.210 | 23.310



VW: T16498629A 30

REP. MANGA CPL. P/1LD.=BRAS= 45,85X256,5 =0,30=

KING PIN KIT 45,85X256,5 =0,30=

CIPEC: 017691

VW: T16498629A 30

VW | 13.170E | 13.180E | 14.150 | 14.200 | 15.170 | 15.170E | 15.180 | 15.180E | 15.190E | 17.210 | 17.300 | 17.310 | 23.210 | 23.310



VW: T16498629ACH 0

REP. MANGA CPL. P/1LD.=BRAS= 45,55X256,5 =STD=

KING PIN KIT 45,55X256,5 =STD=

CIPEC: 019850

VW: T16498629ACH 0

VW | 13.170E | 13.180E | 14.150 | 14.200 | 15.170 | 15.170E | 15.180 | 15.180E | 15.190E | 17.210 | 17.300 | 17.310 | 23.210 | 23.310



VW: T16498629ACH 10

REP. MANGA CPL. P/1LD.=BRAS= 45,65X256,5 =0,10=

KING PIN KIT 45,65X256,5 =0,10=

CIPEC: 019851

VW: T16498629ACH 10

VW | 13.170E | 13.180E | 14.150 | 14.200 | 15.170 | 15.170E | 15.180 | 15.180E | 15.190E | 17.210 | 17.300 | 17.310 | 23.210 | 23.310



VW: T16498629ACH 20

REP. MANGA CPL. P/1LD.=BRAS= 45,75X256,5 =0,20=

KING PIN KIT 45,75X256,5 =0,20=

CIPEC: 019852

VW: T16498629ACH 20

VW | 13.170E | 13.180E | 14.150 | 14.200 | 15.170 | 15.170E | 15.180 | 15.180E | 15.190E | 17.210 | 17.300 | 17.310 | 23.210 | 23.310



VW: T16498629ACH 30

REP. MANGA CPL. P/1LD.=BRAS= 45,85X256,5 =0,30=

KING PIN KIT 45,85X256,5 =0,30=

CIPEC: 019853

VW: T16498629ACH 30

VW | 13.170E | 13.180E | 14.150 | 14.200 | 15.170 | 15.170E | 15.180 | 15.180E | 15.190E | 17.210 | 17.300 | 17.310 | 23.210 | 23.310



VW: T16498629B

REP. MANGA CPL. P/1LD.=BRAS= 45,55X256,5 =STD=

KING PIN KIT 45,55X256,5 =STD=

CIPEC: 023340

VW: T16498629B

VW | 12.180 | 14.150 | 14.170BT | 14.180 | 14.200 | 14.210 | 14.220 | 15.190 | 15.170 | 15.170E | 15.180 | 15.180E | 15.180E CONSTELLATION | 15.180EOD | 15.190E | 15.190EOD | 16.170 | 16.180CO | 16.200 | 16.210 | 16.210CO | 16.220 | 16.300 | 17.180 CUMMINS EURO 3 | 17.180 MWM EURO 3 | 17.210 | 17.210OD | 17.220 | 17.220 CUMMINS EURO 3 | 17.220 MWM EURO 2 | 17.220 MWM EURO 3 | 17.250E | 17.250E CONSTELLATION | 17.300 | 17.310 | 17.320E CONSTELLATION | 18.310 | 19.320E CONSTELLATION | 19.370 CONSTELLATION | 23.210 | 23.220 | 23.250E | 23.310 | 24.220 CUMMINS EURO 3 | 24.220 MWM EURO 3 | 24.250 | 24.250E | 25.320 CONSTELLATION | 25.370E CONSTELLATION | 26.220 | 26.260 | 26.260 CONSTELLATION | 26.260E | 26.300 | 26.310 | 31.260 | 31.260 CONSTELLATION | 31.260E | 31.310 | 31.320E CONSTELLATION | 31.370E CONSTELLATION | 35.300 | 35.300H | 40.300 | 40.300 LEITO



VW: T16498629B 10

REP. MANGA CPL. P/1LD.=BRAS= 45,65X256,5 =0,10=

KING PIN KIT 45,65X256,5 =0,10=

CIPEC: 023341

VW: T16498629B 10

VW | 12.180 | 14.150 | 14.170BT | 14.180 | 14.200 | 14.210 | 14.220 | 15.190 | 15.170 | 15.170E | 15.180 | 15.180E | 15.180E CONSTELLATION | 15.180EOD | 15.190E | 15.190EOD | 16.170 | 16.180CO | 16.200 | 16.210 | 16.210CO | 16.220 | 16.300 | 17.180 CUMMINS EURO 3 | 17.180 MWM EURO 3 | 17.210 | 17.210OD | 17.220 | 17.220 CUMMINS EURO 3 | 17.220 MWM EURO 2 | 17.220 MWM EURO 3 | 17.250E | 17.250E CONSTELLATION | 17.300 | 17.310 | 17.320E CONSTELLATION | 18.310 | 19.320E CONSTELLATION | 19.370 CONSTELLATION | 23.210 | 23.220 | 23.250E | 23.310 | 24.220 CUMMINS EURO 3 | 24.220 MWM EURO 3 | 24.250 | 24.250E | 24.250ECONSTELLATION | 24.320ECONSTELLATION | 25.320 CONSTELLATION | 25.370E CONSTELLATION | 26.220 | 26.260 | 26.260 CONSTELLATION | 26.260E | 26.300 | 26.310 | 31.260 | 31.260 CONSTELLATION | 31.260E | 31.310 | 31.320E CONSTELLATION | 31.370E CONSTELLATION | 35.300 | 35.300H | 40.300 | 40.300 LEITO



VW: T16498629B 20

REP. MANGA CPL. P/1LD.=BRAS= 45,75X256,5 =0,20=

KING PIN KIT 45,75X256,5 =0,20=

CIPEC: 023342

VW: T16498629B 20

VW | 12.180 | 14.150 | 14.170BT | 14.180 | 14.200 | 14.210 | 14.220 | 15.190 | 15.170 | 15.170E | 15.180 | 15.180E | 15.180E CONSTELLATION | 15.180EOD | 15.190E | 15.190EOD | 16.170 | 16.180CO | 16.200 | 16.210 | 16.210CO | 16.220 | 16.300 | 17.180 CUMMINS EURO 3 | 17.180 MWM EURO 3 | 17.210 | 17.210OD | 17.220 | 17.220 CUMMINS EURO 3 | 17.220 MWM EURO 2 | 17.220 MWM EURO 3 | 17.250E | 17.250E CONSTELLATION | 17.300 | 17.310 | 17.320E CONSTELLATION | 18.310 | 19.320E CONSTELLATION | 19.370 CONSTELLATION | 23.210 | 23.220 | 23.250E | 23.310 | 24.220 CUMMINS EURO 3 | 24.220 MWM EURO 3 | 24.250 | 24.250E | 24.250ECONSTELLATION | 24.320ECONSTELLATION | 25.320 CONSTELLATION | 25.370E CONSTELLATION | 26.220 | 26.260 | 26.260 CONSTELLATION | 26.260E | 26.300 | 26.310 | 31.260 | 31.260 CONSTELLATION | 31.260E | 31.310 | 31.320E CONSTELLATION | 31.370E CONSTELLATION | 35.300 | 35.300H | 40.300 | 40.300 LEITO



VW: T16498629B 30

REP. MANGA CPL. P/1LD.=BRAS= 45,85X256,5 =0,30=

KING PIN KIT 45,85X256,5 =0,30=

CIPEC: 023343

VW: T16498629B 30

VW | 12.180 | 14.150 | 14.170BT | 14.180 | 14.200 | 14.210 | 14.220 | 15-190 | 15.170 | 15.170E | 15.180 | 15.180E | 15.180E CONSTELLATION | 15.180EOD | 15.190E | 15.190EOD | 16.170 | 16.180CO | 16.200 | 16.210 | 16.210CO | 16.220 | 16.300 | 17.180 CUMMINS EURO 3 | 17.180 MWM EURO 3 | 17.210 | 17.210OD | 17.220 | 17.220 CUMMINS EURO 3 | 17.220 MWM EURO 2 | 17.220 MWM EURO 3 | 17.250E | 17.250E CONSTELLATION | 17.300 | 17.310 | 17.320E CONSTELLATION | 18.310 | 19.320E CONSTELLATION | 19.370 CONSTELLATION | 23.210 | 23.220 | 23.250E | 23.310 | 24.220 CUMMINS EURO 3 | 24.220 MWM EURO 3 | 24.250 | 24.250E | 24.250ECONSTELLATION | 24.320ECONSTELLATION | 25.320 CONSTELLATION | 25.370E CONSTELLATION | 26.220 | 26.260 | 26.260 CONSTELLATION | 26.260E | 26.300 | 26.310 | 31.260 | 31.260 CONSTELLATION | 31.260E | 31.310 | 31.320E CONSTELLATION | 31.370E CONSTELLATION | 35.300 | 35.300H | 40.300 | 40.300 LEITO



VW: T16498629BCH 0

REP. MANGA CPL. P/1LD.=BRAS= 45,55X256,5 =STD=

KING PIN KIT 45,55X256,5 =STD=

CIPEC: 023344

VW: T16498629BCH 0

FORD | 1317 4X2 | 1317E 4X2 | 1415CUM | 1415FNH | 1417 CUMMINS | 1419 | 1422 | 1517 4X2 | 1517E 4X2 | 1519 4X2 | 1617 | 1622 | 1717 4X2 | 1717E 4X2 | 1719 4X2 | 1722 | 1722 4X2 | 2322 | 2422 | 2422 6X2 | 2428 6X2 | 2622 | 2628 6X4 | 2628E 6X4 | 3132 6X4 | 3224 | 3530 | 4432E 4X2 | F14000 | F16000 | VW | 12.180 | 14.150 | 14.170BT | 14.180 | 14.200 | 14.210 | 14.220 | 15-190 | 15.170 | 15.170E | 15.180 | 15.180E | 15.180E CONSTELLATION | 15.180EOD | 15.190E | 15.190EOD | 16.170 | 16.180CO | 16.200 | 16.210 | 16.210CO | 16.220 | 16.300 | 17.180 CUMMINS EURO 3 | 17.180 MWM EURO 3 | 17.210 | 17.210OD | 17.220 | 17.220 CUMMINS EURO 3 | 17.220 MWM EURO 2 | 17.220 MWM EURO 3 | 17.250E | 17.250E CONSTELLATION | 17.300 | 17.310 | 17.320E CONSTELLATION | 18.310 | 19.320E CONSTELLATION | 19.370 CONSTELLATION | 23.210 | 23.220 | 23.250E | 23.310 | 24.220 CUMMINS EURO 3 | 24.220 MWM EURO 3 | 24.250 | 24.250E | 24.250ECONSTELLATION | 24.320ECONSTELLATION | 25.320 CONSTELLATION | 25.370E CONSTELLATION | 26.220 | 26.260 | 26.260 CONSTELLATION | 26.260E | 26.300 | 26.310 | 31.260 |



VW: T16498629BCH 10

REP. MANGA CPL. P/1LD.=BRAS= 45,65X256,5 =0,10=

KING PIN KIT 45,65X256,5 =0,10=

CIPEC: 023345

VW: T16498629BCH 10

FORD | 1317 4X2 | 1317E 4X2 | 1415CUM | 1415FNH | 1417 CUMMINS | 1419 | 1422 | 1517 4X2 | 1517E 4X2 | 1519 4X2 | 1617 | 1622 | 1717 4X2 | 1717E 4X2 | 1719 4X2 | 1722 | 1722 4X2 | 2322 | 2422 | 2422 6X2 | 2428 6X2 | 2622 | 2628 6X4 | 2628E 6X4 | 3132 6X4 | 3224 | 3530 | 4432E 4X2 | F14000 | F16000 | VW | 12.180 | 14.150 | 14.170BT | 14.180 | 14.200 | 14.210 | 14.220 | 15-190 | 15.170 | 15.170E | 15.180 | 15.180E | 15.180E CONSTELLATION | 15.180EOD | 15.190E | 15.190EOD | 16.170 | 16.180CO | 16.200 | 16.210 | 16.210CO | 16.220 | 16.300 | 17.180 CUMMINS EURO 3 | 17.180 MWM EURO 3 | 17.210 | 17.210OD | 17.220 | 17.220 CUMMINS EURO 3 | 17.220 MWM EURO 2 | 17.220 MWM EURO 3 | 17.250E | 17.250E CONSTELLATION | 17.300 | 17.310 | 17.320E CONSTELLATION | 18.310 | 19.320E CONSTELLATION | 19.370 CONSTELLATION | 23.210 | 23.220 | 23.250E | 23.310 | 24.220 CUMMINS EURO 3 | 24.220 MWM EURO 3 | 24.250 | 24.250E | 24.250ECONSTELLATION | 24.320ECONSTELLATION | 25.320 CONSTELLATION | 25.370E CONSTELLATION | 26.220 | 26.260 | 26.260 CONSTELLATION | 26.260E | 26.300 | 26.310 | 31.260 |



VW: T16498629BCH 20

REP. MANGA CPL. P/1LD.=BRAS= 45,75X256,5 =0,20=

KING PIN KIT 45,75X256,5 =0,20=

CIPEC: 023346

VW: T16498629BCH 20

FORD | 1317 4X2 | 1317E 4X2 | 1415CUM | 1415FNH | 1417 CUMMINS | 1419 | 1422 | 1517 4X2 | 1517E 4X2 | 1519 4X2 | 1617 | 1622 | 1717 4X2 | 1717E 4X2 | 1719 4X2 | 1722 | 1722 4X2 | 2322 | 2422 | 2422 6X2 | 2428 6X2 | 2622 | 2628 6X4 | 2628E 6X4 | 3132 6X4 | 3224 | 3530 | 4432E 4X2 | F14000 | F16000 | VW | 12.180 | 14.150 | 14.170BT | 14.180 | 14.200 | 14.210 | 14.220 | 15-190 | 15.170 | 15.170E | 15.180 | 15.180E | 15.180E CONSTELLATION | 15.180EOD | 15.190E | 15.190EOD | 16.170 | 16.180CO | 16.200 | 16.210 | 16.210CO | 16.220 | 16.300 | 17.180 CUMMINS EURO 3 | 17.180 MWM EURO 3 | 17.210 | 17.210OD | 17.220 | 17.220 CUMMINS EURO 3 | 17.220 MWM EURO 2 | 17.220 MWM EURO 3 | 17.250E | 17.250E CONSTELLATION | 17.300 | 17.310 | 17.320E CONSTELLATION | 18.310 | 19.320E CONSTELLATION | 19.370 CONSTELLATION | 23.210 | 23.220 | 23.250E | 23.310 | 24.220 CUMMINS EURO 3 | 24.220 MWM EURO 3 | 24.250 | 24.250E | 24.250ECONSTELLATION | 24.320ECONSTELLATION | 25.320 CONSTELLATION | 25.370E CONSTELLATION | 26.220 | 26.260 | 26.260 CONSTELLATION | 26.260E | 26.300 | 26.310 | 31.260 |



VW: T16498629BCH 30

REP. MANGA CPL. P/1LD.=BRAS= 45,85X256,5 =0,30=

KING PIN KIT 45,85X256,5 =0,30=

CIPEC: 023347

VW: T16498629BCH 30

FORD | 1317 4X2 | 1317E 4X2 | 1415CUM | 1415FNH | 1417 CUMMINS | 1419 | 1422 | 1517 4X2 | 1517E 4X2 | 1519 4X2 | 1617 | 1622 | 1717 4X2 | 1717E 4X2 | 1719 4X2 | 1722 | 1722 4X2 | 2322 | 2422 | 2422 6X2 | 2428 6X2 | 2622 | 2628 6X4 | 2628E 6X4 | 3132 6X4 | 3224 | 3530 | 4432E 4X2 | F14000 | F16000 | VW | 12.180 | 14.150 | 14.170BT | 14.180 | 14.200 | 14.210 | 14.220 | 15-190 | 15.170 | 15.170E | 15.180 | 15.180E | 15.180E CONSTELLATION | 15.180EOD | 15.190E | 15.190EOD | 16.170 | 16.180CO | 16.200 | 16.210 | 16.210CO | 16.220 | 16.300 | 17.180 CUMMINS EURO 3 | 17.180 MWM EURO 3 | 17.210 | 17.210OD | 17.220 | 17.220 CUMMINS EURO 3 | 17.220 MWM EURO 2 | 17.220 MWM EURO 3 | 17.250E | 17.250E CONSTELLATION | 17.300 | 17.310 | 17.320E CONSTELLATION | 18.310 | 19.320E CONSTELLATION | 19.370 CONSTELLATION | 23.210 | 23.220 | 23.250E | 23.310 | 24.220 CUMMINS EURO 3 | 24.220 MWM EURO 3 | 24.250 | 24.250E | 24.250ECONSTELLATION | 24.320ECONSTELLATION | 25.320 CONSTELLATION | 25.370E CONSTELLATION | 26.220 | 26.260 | 26.260 CONSTELLATION | 26.260E | 26.300 | 26.310 | 31.260 |



VW: T16498629B VP

REP. MANGA CPL. P/1LD.=BRAS= 45,65X256,5 =VPL=

KING PIN KIT 45,65X256,5 =0,10=

CIPEC: 026552

VW: T16498629B VP

VW



VW: T16498629CH 0

REP. MANGA CPL. P/1LD.=SIFCO=45,55X264,5 =STD=

KING PIN KIT SIFCO 2 SIDES =STD= 45,55X264,5

CIPEC: 019862

VW: 2VF498629CH / T16498629CH 0

VW | 12.180 | 14.150 | 14.170BT | 14.180 | 14.200 | 14.210 | 14.220 | 15-190 | 15.170 | 15.170E | 15.180 | 15.180E | 15.180E CONSTELLATION | 15.180EOD | 15.190E | 15.190EOD | 16.170 | 16.180CO | 16.200 | 16.210 | 16.210CO | 16.220 | 16.300 | 17.180 CUMMINS EURO 3 | 17.180 MWM EURO 3 | 17.210 | 17.210OD | 17.220 | 17.220 CUMMINS EURO 3 | 17.220 MWM EURO 2 | 17.220 MWM EURO 3 | 17.250E | 17.250E CONSTELLATION | 17.300 | 17.310 | 17.320E CONSTELLATION | 18.310 | 19.320E CONSTELLATION | 19.370 CONSTELLATION | 23.210 | 23.220 | 23.250E | 23.310 | 24.220 CUMMINS EURO 3 | 24.220 MWM EURO 3 | 24.250 | 24.250E | 24.250ECONSTELLATION | 24.320ECONSTELLATION | 25.320 CONSTELLATION | 25.370E CONSTELLATION | 26.220 | 26.260 | 26.260 CONSTELLATION | 26.260E | 26.300 | 26.310 | 31.260 | 31.260 CONSTELLATION | 31.260E | 31.310 | 31.320E CONSTELLATION | 31.370E CONSTELLATION | 35.300 | 35.300H | 40.300 | 40.300 LEITO



VW: T16498629CH 10

REP. MANGA CPL. P/1LD.=SIFCO=45,65X264,5 =0,10=

KING PIN KIT COMPLETE SIFCO 2 SIDES =0,10= 45,65X2

CIPEC: 019863

VW: 2VF498629CH 10 / T16498629CH 10

VW | 12.180 | 14.150 | 14.170BT | 14.180 | 14.200 | 14.210 | 14.220 | 15-190 | 15.170 | 15.170E | 15.180 | 15.180E | 15.180E CONSTELLATION | 15.180EOD | 15.190E | 15.190EOD | 16.170 | 16.180CO | 16.200 | 16.210 | 16.210CO | 16.220 | 16.300 | 17.180 CUMMINS EURO 3 | 17.180 MWM EURO 3 | 17.210 | 17.210OD | 17.220 | 17.220 CUMMINS EURO 3 | 17.220 MWM EURO 2 | 17.220 MWM EURO 3 | 17.250E | 17.250E CONSTELLATION | 17.300 | 17.310 | 17.320E CONSTELLATION | 18.310 | 19.320E CONSTELLATION | 19.370 CONSTELLATION | 23.210 | 23.220 | 23.250E | 23.310 | 24.220 CUMMINS EURO 3 | 24.220 MWM EURO 3 | 24.250 | 24.250E | 24.250ECONSTELLATION | 24.320ECONSTELLATION | 25.320 CONSTELLATION | 25.370E CONSTELLATION | 26.220 | 26.260 | 26.260 CONSTELLATION | 26.260E | 26.300 | 26.310 | 31.260 | 31.260 CONSTELLATION | 31.260E | 31.310 | 31.320E CONSTELLATION | 31.370E CONSTELLATION | 35.300 | 35.300H | 40.300 | 40.300 LEITO



VW: T16498629CH 20

REP. MANGA CPL. P/1LD.=SIFCO=45,75X264,5 =0,20=

KING PIN KIT COMPLETE SIFCO 2 SIDES =0,20= 45,75X2

CIPEC: 019864

VW: 2VF498629CH 20 / T16498629CH 20

VW | 12.180 | 14.150 | 14.170BT | 14.180 | 14.200 | 14.210 | 14.220 | 15.190 | 15.170 | 15.170E | 15.180 | 15.180E | 15.180E CONSTELLATION | 15.180EOD | 15.190E | 15.190EOD | 16.170 | 16.180CO | 16.200 | 16.210 | 16.210CO | 16.220 | 16.300 | 17.180 CUMMINS EURO 3 | 17.180 MWM EURO 3 | 17.210 | 17.210OD | 17.220 | 17.220 CUMMINS EURO 3 | 17.220 MWM EURO 2 | 17.220 MWM EURO 3 | 17.250E | 17.250E CONSTELLATION | 17.300 | 17.310 | 17.320E CONSTELLATION | 18.310 | 19.320E CONSTELLATION | 19.370 CONSTELLATION | 23.210 | 23.220 | 23.250E | 23.310 | 24.220 CUMMINS EURO 3 | 24.220 MWM EURO 3 | 24.250 | 24.250E | 24.250ECONSTELLATION | 24.320ECONSTELLATION | 25.320 CONSTELLATION | 25.370E CONSTELLATION | 26.220 | 26.260 | 26.260 CONSTELLATION | 26.260E | 26.300 | 26.310 | 31.260 | 31.260 CONSTELLATION | 31.260E | 31.310 | 31.320E CONSTELLATION | 31.370E CONSTELLATION | 35.300 | 35.300H | 40.300 | 40.300 LEITO



VW: T16498629CH 30

REP. MANGA CPL. P/1LD.=SIFCO=45,85X264,5 =0,30=

KING PIN KIT COMPLETE SIFCO 2 SIDES =0,30= 45,85X2

CIPEC: 019865

VW: 2VF498629CH 30 / T16498629CH 30

VW | 12.180 | 14.150 | 14.170BT | 14.180 | 14.200 | 14.210 | 14.220 | 15.190 | 15.170 | 15.170E | 15.180 | 15.180E | 15.180E CONSTELLATION | 15.180EOD | 15.190E | 15.190EOD | 16.170 | 16.180CO | 16.200 | 16.210 | 16.210CO | 16.220 | 16.300 | 17.180 CUMMINS EURO 3 | 17.180 MWM EURO 3 | 17.210 | 17.210OD | 17.220 | 17.220 CUMMINS EURO 3 | 17.220 MWM EURO 2 | 17.220 MWM EURO 3 | 17.250E | 17.250E CONSTELLATION | 17.300 | 17.310 | 17.320E CONSTELLATION | 18.310 | 19.320E CONSTELLATION | 19.370 CONSTELLATION | 23.210 | 23.220 | 23.250E | 23.310 | 24.220 CUMMINS EURO 3 | 24.220 MWM EURO 3 | 24.250 | 24.250E | 24.250ECONSTELLATION | 24.320ECONSTELLATION | 25.320 CONSTELLATION | 25.370E CONSTELLATION | 26.220 | 26.260 | 26.260 CONSTELLATION | 26.260E | 26.300 | 26.310 | 31.260 | 31.260 CONSTELLATION | 31.260E | 31.310 | 31.320E CONSTELLATION | 31.370E CONSTELLATION | 35.300 | 35.300H | 40.300 | 40.300 LEITO



**Vendas / Sales:** vendas@cipec.com.br  
**Geral / General:** cipec@cipec.com.br  
**Televendas / Phone:** +55 19 3834-9822  
**Fax / Fax:** 0800.707.9822  
**www.cipec.com.br**



Televendas: + 55 19 3834.9822

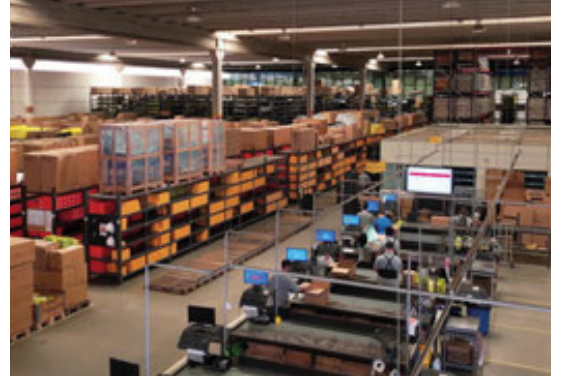
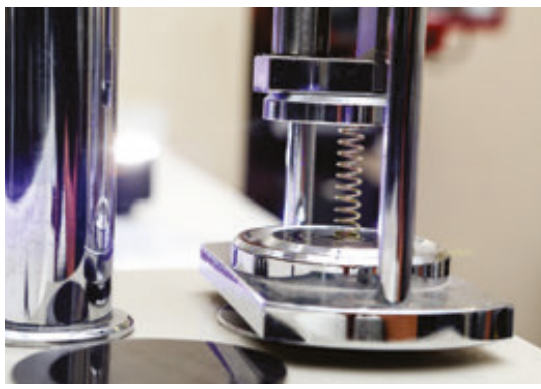


+ 55 54 3211.1800



+ 55 11 2626.8839





**Conheça toda nossa linha de produtos:**

- ✓ **Scania**
- ✓ **Volvo**
- ✓ **Iveco**
- ✓ **VW**
- ✓ **Mercedes**
- ✓ **Freios**
- ✓ **Daf**
- ✓ **Ford**



**[www.cipec.com.br](http://www.cipec.com.br)**

**EMPRESA CERTIFICADA  
CERTIFIED COMPANY ISO 9001:2015**

