



CATÁLOGO DE FREIOS

Catalogue of Brakes

SERVOS E CILINDROS

*Clutch Servos
And Cylinders*

www.ntifreios.com.br

EMPRESA CERTIFICADA
CERTIFIED COMPANY ISO 9001:2015

A Cipec iniciou suas atividades em 1983 na cidade de São Caetano como um pequeno distribuidor e fabricante de peças de reposição para caminhões e ônibus. Trabalhando com empenho e seriedade, a Cipec rapidamente ampliou seu leque de produtos de distribuição, alcançando logo em seguida o status de referência nacional no mercado de reposição da linha Scania.

Em 1999, devido ao ritmo crescente dos negócios, a estrutura da Cipec já não comportava a demanda, levando a empresa a transferir suas atividades para uma área de 20.000 m² em Indaiatuba, localizada estrategicamente no interior paulista. Nesse novo local, a empresa investiu fortemente na parte fabril e agregou as linhas Volvo, VW, MWM, Cummins e Iveco.

Com amplo espaço fabril e novos nichos de mercado se abrindo, em 2003 a Cipec inovou mais uma vez, implantando uma completa linha de servos de embreagem, válvulas e reparos de freios para linha pesada. Surgiu então a NTI, uma marca Cipec que em pouco tempo ficaria conhecida no mercado, oferecendo um produto competitivo e altamente confiável.

Atualmente, a Cipec conta com mais de 170 colaboradores e comercializa mais de 22.000 itens a partir de sua unidade fabril localizada em Indaiatuba, ampliando ainda mais sua capacidade de produção e expedindo mais de 30 toneladas de produtos por dia para mais de 50 países em todo o mundo.

Cipec began its activities in 1983 in the city of São Caetano as a small distributor and manufacturer of spare parts for trucks and buses. Working with dedication and seriousness, Cipec quickly expanded its range of distribution products and soon achieved national reference status in the replacement market for the Scania line.

By 1999, its structure could no longer accommodate the growing pace of business, prompting Cipec to transfer its operations to a 20,000 m² area in Indaiatuba, strategically located in the interior of São Paulo. Strong investments were made in the manufacturing sector, and the Volvo, VW, MWM, Cummins, and Iveco lines were added.

With ample manufacturing space and new market niches emerging, Cipec innovated once again in 2003, introducing a complete line of clutch servos, valves, and brake repair kits for heavy-duty applications. Thus, NTI was born, a Cipec brand that quickly became known in the market, offering competitive and highly reliable products.

Today, Cipec employs over 170 employees and sells over 22,000 items from its manufacturing facility located in Indaiatuba, further increasing its production capacity and shipping over 30 tons of products per day to more than 50 countries worldwide.

La Cipec inició sus actividades en 1983 en la ciudad de São Caetano como un pequeño distribuidor y fabricante de repuestos para camiones y autobuses. Trabajando con dedicación y seriedad, Cipec amplió rápidamente su gama de productos de distribución y pronto alcanzó el estatus de referencia nacional en el mercado de repuestos para la línea Scania.

Para 1999, su estructura ya no podía soportar el creciente ritmo de negocios, lo que llevó a Cipec a trasladar sus operaciones a una área de 20,000 m² en Indaiatuba, estratégicamente ubicada en el interior de São Paulo. Se realizaron fuertes inversiones en el sector manufacturero y se añadieron las líneas Volvo, VW, MWM, Cummins e Iveco.

Con un amplio espacio de fabricación y nuevos nichos de mercado emergentes, Cipec innovó una vez más en 2003, introduciendo una línea completa de servos de embrague, válvulas y reparaciones de frenos para aplicaciones de servicio pesado. Así nació NTI, una marca de Cipec que rápidamente se hizo conocida en el mercado, ofreciendo productos competitivos y altamente confiables.

Hoy en día, Cipec emplea a más de 170 trabajadores y vende más de 22,000 artículos desde su planta de fabricación ubicada en Indaiatuba, aumentando aún más su capacidad de producción y enviando más de 30 toneladas de productos al día a más de 50 países en todo el mundo.



WABCO	03
CILINDROS	03
SERVOS	05
KNORR	15
CILINDROS	15
SERVOS	17
VARGA	23
CILINDROS	23
BENDIX	24
CILINDROS	24
DIVERSOS	25
CILINDROS	25
SERVOS	41
CONTATOS	52
ÍNDICE REMISSIVO	53

WABCO	03
CYLINDERS	03
CLUTCH SERVO	05
KNORR	15
CYLINDERS	15
CLUTCH SERVO	17
VARGA	23
CYLINDERS	23
BENDIX	24
CYLINDERS	24
DIVERSOS	25
CYLINDERS	25
CLUTCH SERVO	41
CONTACTS	52
PART NUMBER INDEX	53

WABCO: 4213520820

NTI: 027951 | NTI: 027952 | WABCO: 4213520820



CIL. ATUADOR CX.CAMBIO
 CIL. ATUADOR CX.CAMBIO
 GEARBOX ACTUATOR HOUSING

MERCEDES: ACTROS, AXOR

WABCO: 4213500830

NTI: 027310 | NTI: 027109, 027311 | WABCO: 4213500830, 4213500870



CIL. COMANDO ALOJAMENTO CX. CAMBIO
 ACTROS
 CIL. COMANDO ALOJAMENTO CX. CAMBIO
 ACTROS
 GEARBOX CHANGING CYLINDER M.BENZ
 ACTROS WABCO TYPE

MERCEDES: ACTROS, AXOR

WABCO: TN4253861

NTI: 005094 | NTI: 021857, 022634 | VW: TN4253861



CILINDRO F. MOTOR SIST. WABCO
 CILINDRO DE FRENO MOTOR WABCO
 ENGINE BRAKE CYLINDER WABCO

VW: 12.140H, 13.170, 14.150, 14.200, 14.220, 15.170, 16.170, 16.220, 16.220 LEITO, 17.210, 24.220, 24.250, 35.300, 35.300 LEITO

WABCO: 2TA253861

NTI: 005097 | NTI: 022636, 022662 | VW: 2TA253861



CILINDRO F. MOTOR SIST. WABCO
 CILINDRO DE FRENO MOTOR WABCO
 ENGINE BRAKE CYLINDER WABCO

VW: 17.2400T, 17.260EOT, 18.3100T, 18.320EOT, 7.100, 7.110, 7.120, 8.100, 8.120, 8.120OD, 8.140, 8.140CE, 8.140CKD, 8.140CO, 8.150, 8.150 EOD, 8.150 OD, 8.150E, 8.150E PLUS, 9.150, 9.150E, 9.150E CUMMINS DELIVERY, 9.150EOD, 9.150OD, L.80

WABCO: 2RD253853B

NTI: 005081 | NTI: 021845, 022630, 023471 | VW: 2R0253853B, 2RD253853, 2RD253853B, 2RD253853C, 2RD253853D, 2RE253853, 2R...



FREIO MOTOR =74MM= 2-7/8
 FRENO MOTOR CPL WABCO
 ENGINE BRAKE 74MM WABCO SYSTEM

FORD: 814, 815, 915 | VW: 12.140T, 13.150, 13.170E, 13.180E, 15.170E, 15.180E, 15.180EOD, 15.190E, 15.190EOD, 7.100, 7.110, 7.120, 8.100, 8.120, 8.120OD, 8.140, 8.140CO, 8.150, 8.150E, 8.150EOD, 8.150OD, 9.150, 9.150E, 9.150EOD, 9.150OD, L.80



WABCO: TAR253853

NTI: 005084 | NTI: 018148, 022631, 023642 | VW: 2RH253853, 2RH253853C, 2RP253853B, 2RP253853C, 2T0253853A, 2TD253853, 2W0...



FREIO MOTOR =85MM= 3-3/8
 FRENO DEL MOTOR CPL WABCO
 ENGINE BRAKE 85MM WABCO SYSTEM

VW: 12.140H, 12.140T, 12.170BT, 12.180, 13.150, 13.170, 13.180, 13.190, 14.150, 14.170BT, 14.180, 14.200, 15.170, 15.180, 15.180EOD, 15.190, 15.190EOD, 16.170, 16.180CO, 16.200, 16.210, 16.210CO, 17.180, 17.210, 17.210 CUMMINS EURO 2, 17.210OD, 17.220, 17.250E, 17.300, 17.310, 18.310, 23.210, 23.210 CUMMINS EURO 2, 23.220, 23.250E, 23.310, 24.220, 24.250, 24.250E, 26.220, 26.260, 26.260E, 26.300, 26.310, 31.260, 35.300, 40.300

WABCO: TMG253853

NTI: 007404 | NTI: 018149, 018265, 021854, 023645 | VW: 2RK253853, TMG253853, TMG253853A



FREIO MOTOR =99MM= 3-7/8
 FRENO MOTOR COMPLETO
 ENGINE BRAKE 99MM

VW: 11.000 (85/...), 14.220, 15.180EOD, 15.190EOD, 16.220, 16.300, 17.220, 17.250E, 17.300, 17.310, 18.310, 23.250E, 24.220, 24.250, 24.250E, 26.220, 26.260, 26.300, 26.310, 31.260, 31.310, 35.300, 40.300

WABCO: 9650019022

NTI: 017900 | NTI: 017901 | WABCO: 9650019022



KIT CILINDRO EMBREAGEM
 KIT CILINDRO DE EMBRAGUE VM
 CLUTCH CYLINDER KIT VM

VOLVO: VM 260, VM 270 6X4, VM 310, VM 330

WABCO: 4213509352

NTI: 028058 | NTI: 028059 | WABCO: 4213509352



REP. CILINDRO COMANDO
 REP. CILINDRO COMANDO
 SHIFTING CYLINDER REPAIR KIT



CIL. COMANDO ALOJAMENTO CX. CAMBIO
 ACTROS
 CIL. COMANDO ALOJAMENTO CX. CAMBIO
 ACTROS
 GEARBOX CHANGING CYLINDER M.BENZ
 ACTROS WABCO TYPE

MERCEDES: ACTROS, AXOR

WABCO: 9700514310

NTI: 014802 | NTI: 023338 | WABCO: 9700514310



SERVO EMBR. =LONGO=
SERVO EMBRAGUE
CLUTCH SERVO (LONG)

MERCEDES: 1938S, 1944S, 2638B, 2638S, ATEGO1729, ATEGO2429, ATRON 2729, AXOR1933, AXOR2036, AXOR2041, AXOR2533, AXOR2536, AXOR2541, AXOR2544, AXOR2641, AXOR2644, AXOR2831, AXOR3341, AXOR3344, AXOR4141, AXOR4144, O500 RSD

WABCO: 9700511280 A

NTI: 013189 | NTI: 013190, 013191, 013192 | WABCO: 8845037280 A, 9700511070 A, 9700511280 A



SERVO EMBR. 110MM TIPO WABCO
SERVO EMBRAGUE 110MM
CLUTCH SERVO 110M WABCO

FORD: 1722E 4X2, 1730 ARG., 2422, 2422E 6X2, 2425, 2428E 6X2, 2622, 2622E 6X4, 2626, 2628E 6X4, 2630, 2631, 2632E 6X4, 2831, 2932E 6X4, 4030, 4031, 4331, 4432E 4X2, 4532E/1832E, 5031, 5032E 6X4, 6332E 6X4, B1618 ONIBUS, B1621 ONIBUS | MERCEDES: 1518, 1525, 1620, 1718, 1725, 1938S, 1944S, ATEGO1418, ATEGO1718, ATEGO1725, ATEGO2425, L1620, L1622, L2325, L2635, L2638, LB2325, LK2325, LK2638, LS1625, LS1630, LS1632, LS1634, LS1929 (FASE II), LS1932, LS1933, LS1934, LS1935, LS1938, LS1941, LS2635, LS2638, O370, O370 R, O370 RS, O370 RSD, O371 R, O371 RS, O371 RSD, O371 RSE, O371 RSL, O371 U, O371 UP, O400, O400 RS, O400 RSD, O400 RSE, O400 RSL, O400 UP, O500, O500 M, O500 R, O500 U, OF1218, OF1319, OF1417, OF1418, OF1618, OF1620, OF1620 PLUS, OF1721, OF1722, OH1421 L, OH1621 L, OH1625, OH1625 L, OH1628 L, OH1635 L | VW: 15.180E OD MWM EURO 3, 15.180EOD, 15.190E OD MWM EURO 3, 15.190EOD, 16.180CO, 16.210CO, 17.180 CUMMINS EURO 3, 17.180 MWM EURO 3, 17.210, 17.210 OD C/DIR.A DIREITA, 17.210E OD, 17.210OD, 17.220, 17.220 CUMMINS EURO 3, 17.220 MWM EURO 3, 17.240OT, 17.250E, 17.260EOT, 17.300, 17.310, 18.310, 18.310OT, 18.320EOT, 23.210, 23.220, 23.250E, 23.310, 24.220, 24.220 CUMMINS EURO 3, 24.220 MWM EURO 3, 24.250, 24.250 CHILE, 24.250E, 26.220, 26.260, 26.260E, 26.300, 26.310, 31.260, 31.260E, 31.310, 40.300, 40.300 LEITO

WABCO: 9700511200

NTI: 019385 | NTI: 022857 | WABCO: 9700510250, 9700511200



SERVO EMBR. CANECA LONGA =BASE
MAIOR= FORD
SERVO DE EMBRAGUE LONGO =FORD=
CLUTCH SERVO LONG HOUSING WABCO

FORD: 1722 4X2, 2422 6X2, 2428 6X2, 2429 6X2, 2622 6X4, 2623 6X4, 2628 6X4, 2629 6X4

WABCO: 9700511000

NTI: 017565 | NTI: 022536, 022870 | WABCO: 9700511000



SERVO EMBR. CANECA LONGA =WABCO=
SERVO DE EMBRAGUE CARCAZA LONGA
WABCO
CLUTCH SERVO LONG HOUSING WABCO

VW: 15.180EOD, 15.190EOD, 16.270CO, 17.210E OD, 17.240CO, 17.260CO

WABCO: 9700512170

NTI: 026026 | NTI: 026402, 026408 | WABCO: 9700512170



SERVO EMBR. DAF/MAN
SERVO EMBR. DAF/MAN
CLUTCH SERVO DAF/MAN

DAF: XF | DAF: XF



WABCO: 9700512270

NTI: 015449 | NTI: 017158 | WABCO: 9700512270, 9700512310



SERVO EMBR. IVECO N. STRALIS 410/460 =
HASTE CURTA=
SERVO EMBRAGUE IVECO NUEVO STRALIS
CLUTCH SERVO IVECO STRALIS 410/460

DIVERSOS: - | IVECO: -, NOVO STRALIS

WABCO: 9700511900

NTI: 018755 | NTI: 025423 | WABCO: 9700511900



SERVO EMBR. O-500 TIPO WABCO
SERVO EMBR. O-500 TIPO WABCO
CLUTCH SERVO O-500 WABCO

MERCEDES: O500 M, OF1417, OF1418, OF1721, OF1722

WABCO: 9700511630

NTI: 014801 | NTI: 022858, 022859 | WABCO: 9700511250, 9700511630



SERVO EMBR. S/ IND. DESGASTE
SERVO EMBRAGUE
CLUTCH SERVO (NO ABLATION INDICATOR)

FORD: 1722E 4X2, 1730, 1730 ARG., 2422, 2422E 6X2, 2425, 2428E 6X2, 2622, 2622E 6X4, 2626, 2628E 6X4, 2630, 2631, 2632E 6X4, 2831, 2932E 6X4, 3222, 3224, 4030, 4031, 4331, 4432E 4X2, 4532E/1832E, 5031, 5032E 6X4, 6332E 6X4, B1618 ONIBUS, B1621 ONIBUS | IVECO: NOVO STRALIS, STRALIS | MERCEDES: 1518, 1525, 1620, 1718, 1725, ATEGO1418, ATEGO1718, ATEGO1725, ATEGO2425, L1620, L1622, L2325, L2635, LB2325, LK2325, LS1625, LS1630, LS1632, LS1634, LS1929 (FASE II), LS1932, LS1933, LS1934, LS1935, LS1941, LS2635, O370, O370 R, O370 RS, O370 RSD, O371 R, O371 RS, O371 RSD, O371 RSE, O371 RSL, O371 U, O371 UP, O400, O400 RS, O400 RSD, O400 RSE, O400 RSL, O500, O500 M, O500 R, O500 U, OF1218, OF1319, OF1417, OF1418, OF1618, OF1620, OF1620 PLUS, OF1721, OF1722, OH1421 L, OH1621 L, OH1625, OH1625 L, OH1628 L, OH1635 L | VW: 15.180E OD MWM EURO 3, 15.180EOD, 15.190E OD MWM EURO 3, 15.190EOD, 16.180CO, 16.210CO, 17.180 CUMMINS EURO 3, 17.180 MWM EURO 3, 17.210, 17.210 OD C/DIR.A DIREITA, 17.210E OD, 17.210E OD MWM EURO 3, 17.210OD, 17.220, 17.220 CUMMINS EURO 3, 17.220 MWM EURO 3, 17.240OT, 17.250E, 17.260EOT, 17.300, 17.310, 18.310, 18.310OT, 18.320EOT, 23.210, 23.220, 23.250E, 23.310, 24.220, 24.220 CUMMINS EURO 3, 24.220 MWM EURO 3, 24.250, 24.250 CHILE, 24.250E, 26.220, 26.260, 26.260E, 26.300, 26.310, 31.260, 31.260E, 31.310, 40.300, 40.300 LEITO

WABCO: 9700516420

NTI: 025059 | NTI: 025060, 025882 | WABCO: 9700516420



SERVO EMBREAGEM MAN
SERVO EMBREAGEM MAN
CLUTCH SERVO MAN REP. KIT W/COVER

DIVERSOS: - | MAN: 10.160 ADVANTECH MAN, 10.160PLUS DELIVERY, 13.190 ADVANTECH MAN, 13.190 WORKER EURO V, 15.190 ADVANTECH MAN, 15.190 OD EURO 5 MAN, 15.190 WORKER EURO V, 17.190 ADVANTCH MAN, 17.190 WORKER EURO V, 17.230 ADVANTECH MAN, 17.230 WORKER EURO V, 17.280 ADVANTECH MAN, 23.230 WORKER EURO V, 23.330 ADVANTECH MAN, 24.280 ADVANTECH MAN, 26.280 ADVANTECH MAN, 31.280 ADVANTECH MAN, 5.150 ADVANTECH MAN, 5.150 OD, 8.160 ADVANTECH MAN, 8.160 DELIVERY, 8.160 OD, 9.160 ADVANTECH MAN, 9.160 DELIVERY, 9.160 OD

WABCO: 2T2721261E

NTI: 027234 | MAN: 2T2721261E | NTI: 027238



SERVO EMBREAGEM MAN
SERVO EMBREAGEM MAN
CLUTCH SERVO MAN

DIVERSOS: - | MAN: 13.190 WORKER EURO V, 15.190 WORKER EURO V, 17.190 WORKER EURO V, 17.230 WORKER EURO V, 17.330 ADVANTECH, 19.330T ADVANTECH, 23.230 WORKER EURO V, 24.330 ADVANTECH, 25.330T ADVANTECH, 26.330T ADVANTECH, 26.360T ADVANTECH, 26.390T ADVANTECH, 26.420T ADVANTECH, 31.330 ADVANTECH, 31.390 ADVANTECH

WABCO: 9700515994

NTI: 023882 | WABCO: 9700515994


 ALOJAMENTO PNEUMATICO
 ALOJAMENTO PNEUMATICO
 BRAKE SERVO PNEUMATIC HOUSING

 SERVO EMBR. =LONGO=
 SERVO EMBRAGUE
 CLUTCH SERVO (LONG)

MERCEDES: 1938S, 1944S, 2638B, 2638S, ATEGO1729, ATEGO2429, ATRON 2729, AXOR1933, AXOR2036, AXOR2041, AXOR2533, AXOR2536, AXOR2541, AXOR2544, AXOR2641, AXOR2644, AXOR2831, AXOR3341, AXOR3344, AXOR4141, AXOR4144, O500 RSD

WABCO: 9700510134

NTI: 006456 | NTI: 022690, 022797 | WABCO: 9700510134


 CIL. CURTO SERVO EMBR. S/INDIC.
 CARCAZA DEL SERVO DE EMBRAGUE
 CLUTCH SERVO SHORT HOUSING

 SERVO EMBR. 110MM TIPO WABCO
 SERVO EMBRAGUE 110MM
 CLUTCH SERVO 110M WABCO

FORD: 1722E 4X2, 1730 ARG., 2422, 2422E 6X2, 2425, 2428E 6X2, 2622, 2622E 6X4, 2626, 2628E 6X4, 2630, 2631, 2632E 6X4, 2831, 2932E 6X4, 4030, 4031, 4331, 4432E 4X2, 4532E/1832E, 5031, 5032E 6X4, 6332E 6X4, B1618 ONIBUS, B1621 ONIBUS | MERCEDES: 1518, 1525, 1620, 1718, 1725, 1938S, 1944S, ATEGO1418, ATEGO1718, ATEGO1725, ATEGO2425, L1620, L1622, L2325, L2635, L2638, LB2325, LK2325, LK2638, LS1625, LS1630, LS1632, LS1634, LS1929 (FASE II), LS1932, LS1933, LS1934, LS1935, LS1938, LS1941, LS2635, LS2638, O370, O370 R, O370 RS, O370 RSD, O371 R, O371 RS, O371 RSD, O371 RSE, O371 RSL, O371 U, O371 UP, O400, O400 RS, O400 RSD, O400 RSE, O400 RSL, O400 UP, O500, O500 M, O500 R, O500 U, OF1218, OF1319, OF1417, OF1418, OF1618, OF1620, OF1620 PLUS, OF1721, OF1722, OH1421 L, OH1621 L, OH1625, OH1625 L, OH1628 L, OH1635 L | VW: 15.180E OD MWM EURO 3, 15.180EOD, 15.190E OD MWM EURO 3, 15.190EOD, 16.180CO, 16.210CO, 17.180 CUMMINS EURO 3, 17.180 MWM EURO 3, 17.210, 17.210 OD C/DIR.A DIREITA, 17.210E OD, 17.210OD, 17.220, 17.220 CUMMINS EURO 3, 17.220 MWM EURO 3, 17.240OT, 17.250E, 17.260EOT, 17.300, 17.310, 18.310, 18.310OT, 18.320EOT, 23.210, 23.220, 23.250E, 23.310, 24.220, 24.220 CUMMINS EURO 3, 24.220 MWM EURO 3, 24.250, 24.250 CHILE, 24.250E, 26.220, 26.260, 26.260E, 26.300, 26.310, 31.260, 31.260E, 31.310, 40.300, 40.300 LEITO

WABCO: 9709030104

NTI: 006457 | NTI: 022953, 022954 | WABCO: 9709030104


 CIL. LONGO SERVO EMBR. S/INDIC.
 CILINDRO DE EMBRAGUE LARGO MB
 CLUTCH SERVO HOUSING MBB (NO WEAR)
 DOWN INDICATOR

 SERVO EMBR. S/ IND. DESGASTE
 SERVO EMBRAGUE
 CLUTCH SERVO (NO ABLATION INDICATOR)

FORD: 1722E 4X2, 1730, 1730 ARG., 2422, 2422E 6X2, 2425, 2428E 6X2, 2622, 2622E 6X4, 2626, 2628E 6X4, 2630, 2631, 2632E 6X4, 2831, 2932E 6X4, 3222, 3224, 4030, 4031, 4331, 4432E 4X2, 4532E/1832E, 5031, 5032E 6X4, 6332E 6X4, B1618 ONIBUS, B1621 ONIBUS | IVECO: NOVO STRALIS, STRALIS | MERCEDES: 1518, 1525, 1620, 1718, 1725, 1938S, 1944S, ATEGO1418, ATEGO1718, ATEGO1725, ATEGO2425, L1620, L1622, L2325, L2635, L2638, LB2325, LK2325, LK2638, LS1625, LS1630, LS1632, LS1634, LS1929 (FASE II), LS1932, LS1933, LS1934, LS1935, LS1938, LS1941, LS2635, LS2638, O370, O370 R, O370 RS, O370 RSD, O371 R, O371 RS, O371 RSD, O371 RSE, O371 RSL, O371 U, O371 UP, O400, O400 RS, O400 RSD, O400 RSE, O400 RSL, O400 UP, O500, O500 M, O500 R, O500 U, OF1218, OF1319, OF1417, OF1418, OF1618, OF1620, OF1620 PLUS, OF1721, OF1722, OH1421 L, OH1621 L, OH1625, OH1625 L, OH1628 L, OH1635 L | VW: 15.180E OD MWM EURO 3, 15.180EOD, 15.190E OD MWM EURO 3, 15.190EOD, 16.180CO, 16.210CO, 17.180 CUMMINS EURO 3, 17.180 MWM EURO 3, 17.210, 17.210 OD C/DIR.A DIREITA, 17.210E OD, 17.210OD, 17.220, 17.220 CUMMINS EURO 3, 17.220 MWM EURO 3, 17.240OT, 17.250E, 17.260EOT, 17.300, 17.310, 18.310, 18.310OT, 18.320EOT, 23.210, 23.220, 23.250E, 23.310, 24.220, 24.220 CUMMINS EURO 3, 24.220 MWM EURO 3, 24.250, 24.250 CHILE, 24.250E, 26.220, 26.260, 26.260E, 26.300, 26.310, 31.260, 31.260E, 31.310, 40.300, 40.300 LEITO

WABCO: 9700511000 C

NTI: 018823 | NTI: 023860, 024436 | WABCO: 9700511000 C, 9709020174 C


 CIL. LONGO SERVO EMBR. VW =WABCO=
 CIL. LONGO SERVO EMBR. VW =WABCO=
 CLUTCH SERVO LONG HOUSING WABCO
 TYPE

 SERVO EMBR. C/ ACIONAM. TRANS. SHIFT =
 MAN=
 SERVO EMBR. C/ ACIONAM. TRANS. SHIFT =
 MAN=
 CLUTCH SERVO =MAN=

VW: 15.180EOD, 15.190EOD, 16.270CO, 17.210E OD, 17.240CO, 17.260CO

WABCO: 9700510174

NTI: 017627 | WABCO: 9700510174


 CIL. SERVO EMBR. FORD
 CIL. SERVO EMBR. FORD
 CLUTCH SERVO HOUSING

 SERVO EMBR. CANECA LONGA =WABCO=
 SERVO DE EMBRAGUE CARCAZA LONGA
 WABCO
 CLUTCH SERVO LONG HOUSING WABCO

FORD: 1722 4X2, 2422 6X2, 2428 6X2, 2429 6X2, 2622 6X4, 2623 6X4, 2628 6X4, 2629 6X4 | VW: 15.180EOD, 15.190EOD, 16.270CO, 17.210E OD, 17.240CO, 17.260CO



WABCO: 9700510010 C

NTI: 023731 | WABCO: 9700510010 C



CIL. SERVO EMBR. MOD. ELETRONICO =
ACTROS=
SERVO DE EMBRAGUE =ACTROS=
CLUTCH SERVO =ACTROS=



SERVO EMBR. MOD. ELETRONICO ACTROS/
AXOR
SERVO DE EMBRAGUE =ACTROS=
CLUTCH SERVO =ACTROS=

MERCEDES: ACTROS 2546, ACTROS 2646, ACTROS 2655, ACTROS 4844, ACTROS TODOS COM CAMBIO AUTOMATICO, ATEGO TODOS COM CAMBIO AUTOMATICO, ATRON TODOS COM CAMBIO AUTOMATICO, AXOR TODOS COM CAMBIO AUTOMATICO

WABCO: 9709020274

NTI: 013204 | WABCO: 9709020274



CIL. SERVO EMBR. O 500
CUERPO NEUMATICO SERVO EMBRAGUE
CLUTCH SERVO HOUSHINH O500



SERVO EMBR. O-500 TIPO WABCO
SERVO EMBR. O-500 TIPO WABCO
CLUTCH SERVO O-500 WABCO

MERCEDES: O500 M, OF1417, OF1418, OF1721, OF1722

WABCO: 9700512270 C

NTI: 016534 | WABCO: 9700512270 C



CIL. SERVO EMBR. STRALIS 410/460
CIL. SERVO EMBR. STRALIS 410/460
CLUTCH SERVO HOUSING STRALIS 410/460



SERVO EMBR. IVECO N. STRALIS 410/460 =
HASTE CURTA=
SERVO EMBRAGUE IVECO NUEVO STRALIS
CLUTCH SERVO IVECO STRALIS 410/460

IVECO: NOVO STRALIS, NOVO TRAKKER

WABCO: 9700511514

NTI: 012033 | WABCO: 9700511514



GUIA VALVULA PNEUMATICA SERVO
GUIA VALVULA
SERVO PNEUMATIC VALVE GUIDE



SERVO EMBR. 110MM TIPO WABCO
SERVO EMBRAGUE 110MM
CLUTCH SERVO 110M WABCO

FORD: 1722E 4X2, 1730, 1730 ARG., 2422, 2422 6X4, 2422E 6X2, 2425, 2425 6X4, 2428E 6X2, 2622, 2622E 6X4, 2626, 2628E 6X4, 2630, 2631, 2632E 6X4, 2831, 2932E 6X4, 3222, 3224, 3530, 4030, 4031, 4331, 4432E 4X2, 4532E/1832E, 5031, 5032E 6X4, 6332E 6X4, B1618 ONIBUS, B1621 ONIBUS | IVECO: STRALIS | MERCEDES: 1318C, 1518, 1525, 1620, 1718, 1725, 1938S, 1944S, ATEGO1418, ATEGO1718, ATEGO1725, ATEGO2425, L1620, L1622, L2325, L2635, L2638, LB2325, LK2325, LK2638, LS1625, LS1630, LS1632, LS1634, LS1929 (FASE II), LS1932, LS1933, LS1934, LS1935, LS1938, LS1941, LS2635, LS2638, O370, O370 R, O370 RS, O370 RSD, O371 R, O371 RS, O371 RSD, O371 RSE, O371 RSL, O371 U, O371 UP, O400, O400 RS, O400 RSD, O400 RSE, O400 RSL, O400 UP, O500, O500 M, O500 R, O500 U, OF1218, OF1219, OF1319, OF1417, OF1418, OF1618, OF1620, OF1620 PLUS, OF1721, OF1722, OH1421 L, OH1621 L, OH1625, OH1625 L, OH1628 L, OH1635 L | VW: 15.180E OD MWM EURO 3, 15.180EOD, 15.190E OD MWM EURO 3, 15.190EOD, 16.180CO, 16.210CO, 16.270CO, 17.180 CUMMINS EURO 3, 17.180 MWM EURO 3, 17.210, 17.210 OD C/DIR.A DIREITA, 17.210E OD, 17.210OD, 17.220, 17.220 CUMMINS EURO 3, 17.220 MWM EURO 3, 17.240CO, 17.240OT, 17.250E, 17.260CO, 17.260EOT, 17.300, 17.310, 17210CO, 18.310, 18.310OT, 18.320EOT, 23.210, 23.220, 23.250E, 23.310, 24.220, 24.220 CUMMINS EURO 3, 24.220 MWM EURO 3, 24.250, 24.250 CHILE, 24.250E, 26.220, 26.260, 26.260E, 26.300, 26.310, 31.260, 31.260E, 31.310, 40.300, 40.300 LEITO, 8.140, 8.150, 8.160 OD, 9.140, 9.150, 9.150E, 9.160 OD

WABCO: 9700517332

NTI: 024593 | WABCO: 9700517332



HASTE ACIONAMENTO
HASTE ACIONAMENTO
ACTION SHAT



SERVO EMBR. =LONGO=
SERVO EMBRAGUE
CLUTCH SERVO (LONG)

MERCEDES: 1938S, 1944S, 2638B, 2638S, ATEGO1729, ATEGO2429, ATRON 2729, AXOR1933, AXOR2036, AXOR2041, AXOR2533, AXOR2536, AXOR2541, AXOR2544, AXOR2641, AXOR2644, AXOR2831, AXOR3341, AXOR3344, AXOR4141, AXOR4144, O500 RSD

WABCO: 8845029614

NTI: 009685 | NTI: 023507, 023824 | WABCO: 8845029614



HASTE EXT. SERVO EMBREAGEM =MBB=
ASTA EXTERNA SERVO EMBRAGUE
ROD CLUTCH SERVO MBB



SERVO EMBR. 110MM TIPO WABCO
SERVO EMBRAGUE 110MM
CLUTCH SERVO 110M WABCO

FORD: 1722E 4X2, 1730 ARG., 2422, 2422E 6X2, 2425, 2428E 6X2, 2622, 2622E 6X4, 2626, 2628E 6X4, 2630, 2631, 2632E 6X4, 2831, 2932E 6X4, 4030, 4031, 4331, 4432E 4X2, 4532E/1832E, 5031, 5032E 6X4, 6332E 6X4, B1618 ONIBUS, B1621 ONIBUS | MERCEDES: 1518, 1525, 1620, 1718, 1725, 1938S, 1944S, ATEGO1418, ATEGO1718, ATEGO1725, ATEGO2425, L1620, L1622, L2325, L2635, L2638, LB2325, LK2325, LK2638, LS1625, LS1630, LS1632, LS1634, LS1929 (FASE II), LS1932, LS1933, LS1934, LS1935, LS1938, LS1941, LS2635, LS2638, O370, O370 R, O370 RS, O370 RSD, O371 R, O371 RS, O371 RSD, O371 RSE, O371 RSL, O371 U, O371 UP, O400, O400 RS, O400 RSD, O400 RSE, O400 RSL, O400 UP, O500, O500 M, O500 R, O500 U, OF1218, OF1319, OF1417, OF1418, OF1618, OF1620, OF1620 PLUS, OF1721, OF1722, OH1421 L, OH1621 L, OH1625, OH1625 L, OH1628 L, OH1635 L | VW: 15.180E OD MWM EURO 3, 15.180EOD, 15.190E CUMMINS 5,9L 190CV, 15.190E OD MWM EURO 3, 15.190EOD, 16.180CO, 16.210CO, 17.180 CUMMINS EURO 3, 17.180 MWM EURO 3, 17.210, 17.210 OD C/DIR.A DIREITA, 17.210E OD, 17.210E OD MWM EURO 3, 17.210OD, 17.220, 17.220 CUMMINS EURO 3, 17.220 MWM EURO 3, 17.240OT, 17.250E, 17.260EOT, 17.300, 17.310, 18.310, 18.310OT, 18.320EOT, 23.210, 23.220, 23.250E, 23.310, 24.220, 24.220 CUMMINS EURO 3, 24.220 MWM EURO 3, 24.250, 24.250 CHILE, 24.250 CHILE COM SERVO, 24.250E, 26.220, 26.260, 26.260E, 26.300, 26.310, 31.260, 31.260E, 31.310, 40.300, 40.300 LEITO

WABCO: 9700516282

NTI: 007415 | NTI: 022715 | WABCO: 9700516282



HASTE INT.SERVO EMBR. =WABCO= CURTO
HORQUILLA SERVO EMBRAGUE
SHORT ROD CLUTCH SERVO WABCO TYPE



SERVO EMBR. 110MM TIPO WABCO
SERVO EMBRAGUE 110MM
CLUTCH SERVO 110M WABCO

FORD: 1722E 4X2, 1730, 1730 ARG., 2422, 2422E 6X2, 2425, 2428E 6X2, 2622, 2622E 6X4, 2626, 2628E 6X4, 2630, 2631, 2632E 6X4, 2831, 2932E 6X4, 4030, 4031, 4331, 4432E 4X2, 4532E/1832E, 5031, 5032E 6X4, 6332E 6X4, B1618 ONIBUS, B1621 ONIBUS | MERCEDES: 1518, 1525, 1620, 1718, 1725, 1938S, 1944S, ATEGO1418, ATEGO1718, ATEGO1725, ATEGO2425, L1620, L1622, L2325, L2635, L2638, LB2325, LK2325, LK2638, LS1625, LS1630, LS1632, LS1634, LS1929 (FASE II), LS1932, LS1933, LS1934, LS1935, LS1938, LS1941, LS2635, LS2638, O370, O370 R, O370 RS, O370 RSD, O371 R, O371 RS, O371 RSD, O371 RSE, O371 RSL, O371 U, O371 UP, O400, O400 RS, O400 RSD, O400 RSE, O400 RSL, O400 UP, O500, O500 M, O500 R, O500 U, OF1218, OF1319, OF1417, OF1418, OF1618, OF1620, OF1620 PLUS, OF1721, OF1722, OH1421 L, OH1621 L, OH1625, OH1625 L, OH1628 L, OH1635 L | VW: 15.180E OD MWM EURO 3, 15.180EOD, 15.190E OD MWM EURO 3, 15.190EOD, 16.180CO, 16.210CO, 17.180 CUMMINS EURO 3, 17.180 MWM EURO 2, 17.180 MWM EURO 3, 17.210, 17.210 OD C/DIR.A DIREITA, 17.210E OD, 17.210E OD MWM EURO 3, 17.210OD, 17.220, 17.220 CUMMINS EURO 3, 17.220 MWM EURO 3, 17.240OT, 17.250E, 17.260EOT, 17.300, 17.310, 18.310, 18.310OT, 18.320EOT, 23.210, 23.220, 23.250E, 23.310, 24.220, 24.220 CUMMINS EURO 3, 24.220 MWM EURO 3, 24.250, 24.250 CHILE, 24.250 CHILE COM SERVO, 24.250E, 26.220, 26.260, 26.260E, 26.300, 26.310, 31.260, 31.260E, 31.310, 40.300, 40.300 LEITO

WABCO: 9709016312

NTI: 012713 | WABCO: 9709016312



HASTE INT.SERVO EMBR. =WABCO= LONGO
HORQUILLA SERVO EMBRAGUE
LONG ROD CLUTCH SERVO WABCO TYPE



SERVO EMBR. S/ IND. DESGASTE
SERVO EMBRAGUE
CLUTCH SERVO (NO ABLATION INDICATOR)

FORD: 1722E 4X2, 1730, 1730 ARG., 2422, 2422E 6X2, 2425, 2428E 6X2, 2622, 2622E 6X4, 2626, 2628E 6X4, 2630, 2631, 2632E 6X4, 2831, 2932E 6X4, 3222, 3224, 4030, 4031, 4331, 4432E 4X2, 4532E/1832E, 5031, 5032E 6X4, 6332E 6X4, B1618 ONIBUS, B1621 ONIBUS | IVECO: NOVO STRALIS, STRALIS | MERCEDES: 1518, 1525, 1620, 1718, 1725, 1938S, 1944S, ATEGO1418, ATEGO1718, ATEGO1725, ATEGO2425, L1620, L1622, L2325, L2635, L2638, LB2325, LK2325, LK2638, LS1625, LS1630, LS1632, LS1634, LS1929 (FASE II), LS1932, LS1933, LS1934, LS1935, LS1938, LS1941, LS2635, LS2638, O370, O370 R, O370 RS, O370 RSD, O371 R, O371 RS, O371 RSD, O371 RSE, O371 RSL, O371 U, O371 UP, O400, O400 RS, O400 RSD, O400 RSE, O400 RSL, O400 UP, O500, O500 M, O500 R, O500 U, OF1218, OF1319, OF1417, OF1418, OF1618, OF1620, OF1620 PLUS, OF1721, OF1722, OH1421 L, OH1621 L, OH1625, OH1625 L, OH1628 L, OH1635 L | VW: 15.180E OD MWM EURO 3, 15.180EOD, 15.190E OD MWM EURO 3, 15.190EOD, 16.180CO, 16.210CO, 17.180 CUMMINS EURO 3, 17.180 MWM EURO 3, 17.210, 17.210 OD C/DIR.A DIREITA, 17.210E OD, 17.210E OD MWM EURO 3, 17.210OD, 17.220, 17.220 CUMMINS EURO 3, 17.220 MWM EURO 3, 17.240OT, 17.250E, 17.260EOT, 17.300, 17.310, 18.310, 18.310OT, 18.320EOT, 23.210, 23.220, 23.250E, 23.310, 24.220, 24.220 CUMMINS EURO 3, 24.220 MWM EURO 3, 24.250, 24.250 CHILE, 24.250E, 26.220, 26.260, 26.260E, 26.300, 26.310, 31.260, 31.260E, 31.310, 40.300, 40.300 LEITO

WABCO: 24872

NTI: 024872 | ZF: 24872



HASTE SERVO SHIFT (MENOR)
HASTE SERVO SHIFT (MENOR)
CLUTCH SERVO SHIFT SHAFT (SMAL) TYPE



SERVO SHIFT ZF
SERVO SHIFT ZF
CLUTCH SERVO SHIFT ZF TYPE

DIVERSOS: - | IVECO: STRALIS | MAN: TGX | RENAULT: PREMIUM | VW: 17.280, 19.330, 19.370, 24.280, 25.370, 31.330, 31.370E



Telefendas: +55 19 3834.9822



+55 54 3211.1800



+55 11 2626.8839

www.ntifreios.com.br

09



WABCO: 9701509232 JB

NTI: 026083 | WABCO: 9701509232 JB



JG. BOBINAS SERVO ACTROS
JG. BOBINAS SERVO ACTROS
SERVO ACTROS COIL SET



SERVO EMBR. MOD. ELETRONICO ACTROS/
AXOR
SERVO DE EMBRAGUE =ACTROS=
CLUTCH SERVO =ACTROS=

MERCEDES: ACTROS 2546, ACTROS 2646, ACTROS 2655, ACTROS 4844, ACTROS TODOS COM CAMBIO AUTOMATICO, ATEGO TODOS COM CAMBIO AUTOMATICO, ATRON TODOS COM CAMBIO AUTOMATICO, AXOR TODOS COM CAMBIO AUTOMATICO

WABCO: 8995061502

NTI: 007719 | WABCO: 8995061502



PISTAO MENOR SERVO EMBREAGEM -
WABCO
PISTON
CLUTCH SERVO PISTON



SERVO EMBR. 110MM TIPO WABCO
SERVO EMBRAGUE 110MM
CLUTCH SERVO 110M WABCO

FORD: 1722E 4X2, 1730, 1730 ARG., 2422, 2422E 6X2, 2425, 2428E 6X2, 2622, 2622E 6X4, 2626, 2628E 6X4, 2630, 2631, 2632E 6X4, 2831, 2932E 6X4, 3222, 3224, 4030, 4031, 4331, 4432E 4X2, 4532E/1832E, 5031, 5032E 6X4, 6332E 6X4, B1618 ONIBUS, B1621 ONIBUS | IVECO: NOVO STRALIS | MERCEDES: 1518, 1525, 1620, 1718, 1725, 1938S, 1944S, ATEGO1418, ATEGO1718, ATEGO1725, ATEGO2425, L1620, L1622, L2325, L2635, L2638, LB2325, LK2325, LK2638, LS1625, LS1630, LS1632, LS1634, LS1929 (FASE II), LS1932, LS1933, LS1934, LS1935, LS1938, LS1940, LS1941, LS2635, LS2638, O370, O370 R, O370 RS, O370 RSD, O371 R, O371 RS, O371 RSD, O371 RSE, O371 RSL, O371 U, O371 UP, O400, O400 RS, O400 RSD, O400 RSE, O400 RSL, O400 UP, O500, O500 M, O500 R, O500 U, OF1218, OF1319, OF1417, OF1418, OF1618, OF1620, OF1620 PLUS, OF1721, OF1722, OH1421 L, OH1621 L, OH1625, OH1625 L, OH1628 L, OH1635 L | VW: 15.180, 15.180E OD MWM EURO 3, 15.180EOD, 15.190E OD MWM EURO 3, 15.190EOD, 16.180CO, 16.210CO, 17.180 CUMMINS EURO 3, 17.180 MWM EURO 3, 17.210, 17.210 OD C/DIR.A DIREITA, 17.210E OD, 17.210OD, 17.220, 17.220 CUMMINS EURO 3, 17.220 MWM EURO 3, 17.240OT, 17.250E, 17.260EOT, 17.300, 17.310, 18.310, 18.310OT, 18.320EOT, 23.210, 23.220, 23.250E, 23.310, 24.220, 24.220 CUMMINS EURO 3, 24.220 MWM EURO 3, 24.250, 24.250 CHILE, 24.250E, 26.220, 26.260, 26.260E, 26.300, 26.310, 31.260, 31.260E, 31.310, 40.300, 40.300 LEITO

WABCO: 9700510494

NTI: 024689 | WABCO: 9700510494



PROTETOR DESCARGA
PROTETOR DESCARGA
DISCHARGE PROTECTION



SERVO EMBR. =LONGO=
SERVO EMBRAGUE
CLUTCH SERVO (LONG)

MERCEDES: 1938S, 1944S, 2638B, 2638S, ATEGO1729, ATEGO2429, ATRON 2729, AXOR1933, AXOR2036, AXOR2041, AXOR2533, AXOR2536, AXOR2541, AXOR2544, AXOR2641, AXOR2644, AXOR2831, AXOR3341, AXOR3344, AXOR4141, AXOR4144, O500 RSD

WABCO: 9700519562 P

NTI: 007179 | NTI: 022693 | WABCO: 9700519062 P, 9700519542 P, 9700519562 P



REP. SERVO EMBR. =PARCIAL= TP. WABCO
KIT REPARACION SERVO DE EMBRAGUE =
PARTIAL=
CLUTCH SERVO REPAIR KIT WABCO
(PARTIAL)



SERVO EMBR. S/ IND. DESGASTE
SERVO EMBRAGUE
CLUTCH SERVO (NO ABLATION INDICATOR)

FORD: 1722E 4X2, 1730, 1730 ARG., 2422, 2422E 6X2, 2425, 2428E 6X2, 2622, 2622E 6X4, 2626, 2628E 6X4, 2630, 2631, 2632E 6X4, 2831, 2932E 6X4, 3222, 3224, 4030, 4031, 4331, 4432E 4X2, 4532E/1832E, 5031, 5032E 6X4, 6332E 6X4, B1618 ONIBUS, B1621 ONIBUS | IVECO: NOVO STRALIS, STRALIS | MERCEDES: 1518, 1525, 1620, 1718, 1725, 1938S, 1944S, ATEGO1418, ATEGO1718, ATEGO1725, ATEGO2425, L1620, L1622, L2325, L2635, L2638, LB2325, LK2325, LK2638, LS1625, LS1630, LS1632, LS1634, LS1929 (FASE II), LS1932, LS1933, LS1934, LS1935, LS1938, LS1941, LS2635, LS2638, O370, O370 R, O370 RS, O370 RSD, O371 R, O371 RS, O371 RSD, O371 RSE, O371 RSL, O371 U, O371 UP, O400, O400 RS, O400 RSD, O400 RSE, O400 RSL, O400 UP, O500, O500 M, O500 R, O500 U, OF1218, OF1319, OF1417, OF1418, OF1618, OF1620, OF1620 PLUS, OF1721, OF1722, OH1421 L, OH1621 L, OH1625, OH1625 L, OH1628 L, OH1635 L | VW: 15.180E OD MWM EURO 3, 15.180EOD, 15.190E OD MWM EURO 3, 15.190EOD, 16.180CO, 16.210CO, 17.180 CUMMINS EURO 3, 17.180 MWM EURO 3, 17.210, 17.210 OD C/DIR.A DIREITA, 17.210E OD, 17.210E OD MWM EURO 3, 17.210OD, 17.220, 17.220 CUMMINS EURO 3, 17.220 MWM EURO 3, 17.240OT, 17.250E, 17.260EOT, 17.300, 17.310, 18.310, 18.310OT, 18.320EOT, 23.210, 23.220, 23.250E, 23.310, 24.220, 24.220 CUMMINS EURO 3, 24.220 MWM EURO 3, 24.250, 24.250 CHILE, 24.250E, 26.220, 26.260, 26.260E, 26.300, 26.310, 31.260, 31.260E, 31.310, 40.300, 40.300 LEITO



WABCO: 9700510010 CN | NTI: 023811 | NTI: 018675, 022910 | WABCO: 9700510010 CN



REP. SERVO EMBR. ACTROS
KIT REP. SERVO EMBRAGUE ACTROS
REPAIR KIT CLUTCH SERVO ACTROS



SERVO EMBR. MOD. ELETRONICO ACTROS/
AXOR
SERVO DE EMBRAGUE =ACTROS=
CLUTCH SERVO =ACTROS=

MERCEDES: ACTROS 2546, ACTROS 2646, ACTROS 2655, ACTROS 4844, ACTROS TODOS COM CAMBIO AUTOMATICO, ATEGO TODOS COM CAMBIO AUTOMATICO, ATRON TODOS COM CAMBIO AUTOMATICO, AXOR TODOS COM CAMBIO AUTOMATICO

WABCO: 9700510010 P | NTI: 019350 | NTI: 022911 | WABCO: 9700510010 P, 9701500010 P, 9701509232 P



REP. SERVO EMBR. ACTROS =PARCIAL=
KIT REP. SERVO EMBRAGUE ACTROS
REPAIR KIT CLUTCH SERVO ACTROS
PARTIAL



SERVO EMBR. MOD. ELETRONICO ACTROS/
AXOR
SERVO DE EMBRAGUE =ACTROS=
CLUTCH SERVO =ACTROS=

MERCEDES: ACTROS 2546, ACTROS 2646, ACTROS 2655, ACTROS 4844, ACTROS TODOS COM CAMBIO AUTOMATICO, ATEGO TODOS COM CAMBIO AUTOMATICO, ATRON TODOS COM CAMBIO AUTOMATICO, AXOR TODOS COM CAMBIO AUTOMATICO

WABCO: 9700511202 | NTI: 016060 | NTI: 024758 | WABCO: 9700511202



REP. SERVO EMBR. CANECA LONGA WABCO
REP. SERVO EMBR. CANECA LONGA WABCO
CLUTCH SERVO REPAIR KIT WABCO LOMG
HOUSING



SERVO EMBR. CANECA LONGA =WABCO=
SERVO DE EMBRAGUE CARCAZA LONGA
WABCO
CLUTCH SERVO LONG HOUSING WABCO

VW: 15.180EOD, 15.190EOD, 16.270CO, 17.210E OD, 17.240CO, 17.260CO

WABCO: 9700512282 | NTI: 018559 | WABCO: 9700512282



REP. SERVO EMBR. CANECA LONGA WABCO
(COM 3/2 VIAS)
REP. SERVO EMBR. CANECA LONGA WABCO
(COM 3/2 VIAS)
CLUTCH SERVO REPAIR KIT WABCO



SERVO EMBR. CANECA LONGA =WABCO=
SERVO DE EMBRAGUE CARCAZA LONGA
WABCO
CLUTCH SERVO LONG HOUSING WABCO

VW: 15.180EOD, 15.190EOD, 16.270CO, 17.210E OD, 17.240CO, 17.260CO

WABCO: 9700519172 | NTI: 007776 | NTI: 022692 | WABCO: 9700519172



REP. SERVO EMBR. MBB 0500
KIT REPARACION SERVO DE EMBRAGUE
MB 0500
CLUTCH SERVO REPAIR KIT MBB O 500



SERVO EMBR. O-500 TIPO WABCO
SERVO EMBR. O-500 TIPO WABCO
CLUTCH SERVO O-500 WABCO

MERCEDES: O500 M, OF1417, OF1418, OF1721, OF1722

WABCO: 9700519742 PG | NTI: 007461 | NTI: 022726 | WABCO: 9700519742 PG



REP. SERVO EMBR. PARCIAL 1944/2638
WABCO
KIT REPARACION SERVO DE EMBRAGUE =
WABCO=
CLUTCH SERVO REPAIR KIT 1944/2638
(PARTIAL) WABCO



SERVO EMBR. =LONGO=
SERVO EMBRAGUE
CLUTCH SERVO (LONG)

MERCEDES: 1938S, 1944S, 2638B, 2638S, ATEGO1729, ATEGO2429, ATRON 2729, AXOR1933, AXOR2036, AXOR2041, AXOR2533, AXOR2536, AXOR2541, AXOR2544, AXOR2641, AXOR2644, AXOR2831, AXOR3341, AXOR3344, AXOR4141, AXOR4144, O500 RSD



WABCO: 9700519742 P

NTI: 007424 | NTI: 022694 | WABCO: 9700519742 P



REP. SERVO EMBR. PARCIAL 1944/2638
WABCO
KIT REPARACION SERVO DE EMBRAGUE
(PARTIAL) WABCO
CLUTCH SERVO REPAIR KIT 1944/2638
(PARTIAL) WABCO



SERVO EMBR. =LONGO=
SERVO EMBRAGUE
CLUTCH SERVO (LONG)

MERCEDES: 1938S, 1944S, 2638B, 2638S, ATEGO1729, ATEGO2429, ATRON 2729, AXOR1933, AXOR2036, AXOR2041, AXOR2533, AXOR2536, AXOR2541, AXOR2544, AXOR2641, AXOR2644, AXOR2831, AXOR3341, AXOR3344, AXOR4141, AXOR4144, 0500 RSD

WABCO: 9700519062 PG

NTI: 007187 | NTI: 022711 | WABCO: 9700519062 PG, 9700519562 PG



REP. SERVO EMBR. PARCIAL S/EMBOLO =
WABCO=
KIT REPARACION SERVO DE EMBRAGUE
CLUTCH SERVO REPAIR KIT (NO PISTON)
WABCO



SERVO EMBR. 110MM TIPO WABCO
SERVO EMBRAGUE 110MM
CLUTCH SERVO 110M WABCO

FORD: 1722E 4X2, 1730 ARG., 2422, 2422E 6X2, 2425, 2428E 6X2, 2622, 2622E 6X4, 2626, 2628E 6X4, 2630, 2631, 2632E 6X4, 2831, 2932E 6X4, 4030, 4031, 4331, 4432E 4X2, 4532E/1832E, 5031, 5032E 6X4, 6332E 6X4, B1618 ONIBUS, B1621 ONIBUS | MERCEDES: 1518, 1525, 1620, 1718, 1725, 1938S, 1944S, ATEGO1418, ATEGO1718, ATEGO1725, ATEGO2425, L1620, L1622, L2325, L2635, L2638, LB2325, LK2325, LK2638, LS1625, LS1630, LS1632, LS1634, LS1929 (FASE II), LS1932, LS1933, LS1934, LS1935, LS1938, LS1941, LS2635, LS2638, O370, O370 R, O370 RS, O370 RSD, O371 R, O371 RS, O371 RSD, O371 RSE, O371 RSL, O371 U, O371 UP, O400, O400 RS, O400 RSD, O400 RSE, O400 RSL, O400 UP, O500, O500 M, O500 R, O500 U, OF1218, OF1319, OF1417, OF1418, OF1618, OF1620, OF1620 PLUS, OF1721, OF1722, OH1421 L, OH1621 L, OH1625, OH1625 L, OH1628 L, OH1635 L | VW: 15.180E OD MWM EURO 3, 15.180EOD, 15.190E OD MWM EURO 3, 15.190EOD, 16.180CO, 16.210CO, 17.180 CUMMINS EURO 3, 17.180 MWM EURO 3, 17.210, 17.210 OD C/DIR.A DIREITA, 17.210E OD, 17.210OD, 17.220, 17.220 CUMMINS EURO 3, 17.220 MWM EURO 3, 17.240OT, 17.250E, 17.260EOT, 17.300, 17.310, 18.310, 18.310OT, 18.320EOT, 23.210, 23.220, 23.250E, 23.310, 24.220, 24.220 CUMMINS EURO 3, 24.220 MWM EURO 3, 24.250, 24.250 CHILE, 24.250E, 26.220, 26.260, 26.260E, 26.300, 26.310, 31.260, 31.260E, 31.310, 40.300, 40.300 LEITO

WABCO: 9700519562

NTI: 004110 | NTI: 006450 | WABCO: 9700519562



REP. SERVO EMBR. TP. WABCO
REPARO SERVO EMBRAGUE - WABCO
CLUTCH SERVO REPAIR KIT WABCO



SERVO EMBR. S/ IND. DESGASTE
SERVO EMBRAGUE
CLUTCH SERVO (NO ABLATION INDICATOR)

FORD: 1722E 4X2, 1730, 1730 ARG., 2422, 2422E 6X2, 2425, 2428E 6X2, 2622, 2622E 6X4, 2626, 2628E 6X4, 2630, 2631, 2632E 6X4, 2831, 2932E 6X4, 3222, 3224, 4030, 4031, 4331, 4432E 4X2, 4532E/1832E, 5031, 5032E 6X4, 6332E 6X4, B1618 ONIBUS, B1621 ONIBUS | IVECO: NOVO STRALIS, STRALIS | MERCEDES: 1518, 1525, 1620, 1718, 1725, 1938S, 1944S, ATEGO1418, ATEGO1718, ATEGO1725, ATEGO2425, L1620, L1622, L2325, L2635, L2638, LB2325, LK2325, LK2638, LS1625, LS1630, LS1632, LS1634, LS1929 (FASE II), LS1932, LS1933, LS1934, LS1935, LS1938, LS1941, LS2635, LS2638, O370, O370 R, O370 RS, O370 RSD, O371 R, O371 RS, O371 RSE, O371 RSL, O371 U, O371 UP, O400, O400 RS, O400 RSD, O400 RSE, O400 RSL, O400 UP, O500, O500 M, O500 R, O500 U, OF1218, OF1319, OF1417, OF1418, OF1618, OF1620, OF1620 PLUS, OF1721, OF1722, OH1421 L, OH1621 L, OH1625, OH1625 L, OH1628 L, OH1635 L | VW: 15.180E OD MWM EURO 3, 15.180EOD, 15.190E OD MWM EURO 3, 15.190EOD, 16.180CO, 16.210CO, 17.180 CUMMINS EURO 3, 17.180 MWM EURO 3, 17.210, 17.210 OD C/DIR.A DIREITA, 17.210E OD, 17.210E OD MWM EURO 3, 17.210OD, 17.220, 17.220 CUMMINS EURO 3, 17.220 MWM EURO 3, 17.240OT, 17.250E, 17.260EOT, 17.300, 17.310, 18.310, 18.310OT, 18.320EOT, 23.210, 23.220, 23.250E, 23.310, 24.220, 24.220 CUMMINS EURO 3, 24.220 MWM EURO 3, 24.250, 24.250 CHILE, 24.250E, 26.220, 26.260, 26.260E, 26.300, 26.310, 31.260, 31.260E, 31.310, 40.300, 40.300 LEITO

WABCO: 9700519952

NTI: 018364 | WABCO: 9700519952



REP. SERVO EMBR. TP. WABCO (C.
SUPPORTE)
REPARO SERVO EMBRAGUE - WABCO
CLUTCH SERVO REPAIR KIT WABCO



SERVO EMBR. IVECO N. STRALIS 410/460 =
HASTE CURTA=
SERVO EMBRAGUE IVECO NUEVO STRALIS
CLUTCH SERVO IVECO STRALIS 410/460

IVECO: NOVO STRALIS, NOVO TRAKKER

WABCO: 9700519542

NTI: 004109 | NTI: 003027, 004111, 006290, 022059, 022617 | WABCO: 9700519062, 9700519542, 9700519552, 9700519832



REP. SERVO EMBR. TP. WABCO (COM SUPORTE)
REPARO SERVO EMBRAGUE - WABCO
CLUTCH SERVO REPAIR KIT WABCO



SERVO EMBR. 110MM TIPO WABCO
SERVO EMBRAGUE 110MM
CLUTCH SERVO 110M WABCO

FORD: 1722E 4X2, 1730, 1730 ARG., 2422, 2422E 6X2, 2425, 2428E 6X2, 2622, 2622E 6X4, 2626, 2628E 6X4, 2630, 2631, 2632E 6X4, 2831, 2932E 6X4, 4030, 4031, 4331, 4432E 4X2, 4532E/1832E, 5031, 5032E 6X4, 6332E 6X4, B1618 ONIBUS, B1621 ONIBUS | MERCEDES: 1518, 1525, 1620, 1718, 1725, 1938S, 1944S, ATEGO1418, ATEGO1718, ATEGO1725, ATEGO2425, L1620, L1622, L2325, L2635, L2638, LB2325, LK2325, LK2638, LS1625, LS1630, LS1632, LS1634, LS1929 (FASE II), LS1932, LS1933, LS1934, LS1935, LS1938, LS1941, LS2635, LS2638, O370, O370 R, O370 RS, O370 RSD, O371 R, O371 RS, O371 RSD, O371 RSE, O371 RSL, O371 U, O371 UP, O400, O400 RS, O400 RSD, O400 RSE, O400 RSL, O400 UP, O500, O500 M, O500 R, O500 U, OF1218, OF1319, OF1417, OF1418, OF1618, OF1620, OF1620 PLUS, OF1721, OF1722, OH1421 L, OH1621 L, OH1625, OH1625 L, OH1628 L, OH1635 L | SCANIA: R113, T113 | VW: 15.180E OD MWM EURO 3, 15.180EOD, 15.190E OD MWM EURO 3, 15.190EOD, 16.180CO, 16.210CO, 17.180 CUMMINS EURO 3, 17.180 MWM EURO 3, 17.210, 17.210 OD C/DIR.A DIREITA, 17.210E OD, 17.210OD, 17.220, 17.220 CUMMINS EURO 3, 17.220 MWM EURO 3, 17.240OT, 17.250E, 17.260EOT, 17.300, 17.310, 18.310, 18.310OT, 18.320EOT, 23.210, 23.220, 23.250E, 23.310, 24.220, 24.220 CUMMINS EURO 3, 24.220 MWM EURO 3, 24.250, 24.250 CHILE, 24.250E, 26.220, 26.260, 26.260E, 26.300, 26.310, 31.260, 31.260E, 31.310, 40.300, 40.300 LEITO

WABCO: 9700519742

NTI: 007423 | NTI: 022695 | WABCO: 9700519742



REP. SERVO EMBR.COMPL.1944/2638 = WABCO=(C SUPORTE)
KIT REPARACION SERVO DE EMBRAGUE WABCO
CLUTCH SERVO REPAIR KIT 1944/2638 WABCO



SERVO EMBR. =LONGO=
SERVO EMBRAGUE
CLUTCH SERVO (LONG)

MERCEDES: 1938S, 1944S, 2638B, 2638S, ATEGO1729, ATEGO2429, ATRON 2729, AXOR1933, AXOR2036, AXOR2041, AXOR2533, AXOR2536, AXOR2541, AXOR2544, AXOR2641, AXOR2644, AXOR2831, AXOR3341, AXOR3344, AXOR4141, AXOR4144, O500 RSD

WABCO: 9700518230 R

NTI: 025662 | WABCO: 9700518230 R



REP. SERVO EMBR/S JUNTA DA TAMPA (WABCO)
REP. SERVO EMBR/S JUNTA DA TAMPA (WABCO)
CLUTCH SERVO REP. KIT W/O COVER GASKET (WABCO TYP)



SERVO EMBR. =MODELO WABCO=
SERVO EMBR. =MODELO WABCO=
SERVO EMBR. =MODELO WABCO=

VOLVO: FH12, FH16, FM12, NH12

WABCO: 9700516420 XA

NTI: 025434 | NTI: 026034 | WABCO: 9700516420 XA, 9700519702 XA



REPARO SERVO MAN =C/TAMPA=
REPARO SERVO MAN =C/TAMPA=
CLUTCH SERVO MAN W/COVER



SERVO EMBREAGEM MAN
SERVO EMBREAGEM MAN
CLUTCH SERVO MAN REP. KIT W/COVER

DIVERSOS: - | MAN: 10.160 ADVANTECH MAN, 10.160PLUS DELIVERY, 13.190 ADVANTECH MAN, 13.190 WORKER EURO V, 15.190 ADVANTECH MAN, 15.190 OD EURO 5 MAN, 15.190 WORKER EURO V, 17.190 ADVANTCH MAN, 17.190 WORKER EURO V, 17.230 ADVANTECH MAN, 17.230 WORKER EURO V, 17.280 ADVANTECH MAN, 23.230 WORKER EURO V, 23.330 ADVANTECH MAN, 24.280 ADVANTECH MAN, 26.280 ADVANTECH MAN, 31.280 ADVANTECH MAN, 5.150 ADVANTECH MAN, 5.150 OD, 8.160 ADVANTECH MAN, 8.160 DELIVERY, 8.160 OD, 9.160 ADVANTECH MAN, 9.160 DELIVERY, 9.160 OD

WABCO: 9700516420 X

NTI: 025011 | NTI: 026033 | WABCO: 9700516420 X, 9700519702 X



REPARO SERVO MAN =S/TAMPA=
REPARO SERVO MAN =S/TAMPA=
CLUTCH SERVO REP. KIT W/O COVER FOR MAN



SERVO EMBREAGEM MAN
SERVO EMBREAGEM MAN
CLUTCH SERVO MAN REP. KIT W/COVER

MAN: 10.160 ADVANTECH MAN, 10.160PLUS DELIVERY, 13.190 ADVANTECH MAN, 13.190 WORKER EURO V, 15.190 ADVANTECH MAN, 15.190 OD EURO 5 MAN, 15.190 WORKER EURO V, 17.190 ADVANTCH MAN, 17.190 WORKER EURO V, 17.230 ADVANTECH MAN, 17.230 WORKER EURO V, 17.280 ADVANTECH MAN, 23.230 WORKER EURO V, 23.330 ADVANTECH MAN, 24.280 ADVANTECH MAN, 26.280 ADVANTECH MAN, 31.280 ADVANTECH MAN, 5.150 ADVANTECH MAN, 5.150 OD, 8.160 ADVANTECH MAN, 8.160 DELIVERY, 8.160 OD, 9.160 ADVANTECH MAN, 9.160 DELIVERY, 9.160 OD



WABCO: 8913505204

NTI: 011006 | NTI: 023010 | WABCO: 8913505204



SANGRADOR SERVO EMBREAGEM =
WABCO=
TORNILLO ALIVIADERO DEL SERVO
EMBRAGUE
CLUTCH SERVO WABCO TYPE 110MM BLEED
SCREW



SERVO EMBR. 110MM TIPO WABCO
SERVO EMBRAGUE 110MM
CLUTCH SERVO 110M WABCO

FORD: 1722E 4X2, 1730, 1730 ARG., 2422, 2422E 6X2, 2425, 2428E 6X2, 2622, 2622E 6X4, 2626, 2628E 6X4, 2630, 2631, 2632E 6X4, 2831, 2932E 6X4, 3222, 3224, 4030, 4031, 4331, 4432E 4X2, 4532E/1832E, 5031, 5032E 6X4, 6332E 6X4, B1618 ONIBUS, B1621 ONIBUS | MERCEDES: 1518, 1525, 1620, 1718, 1725, 1938S, 1944S, ATEGO1418, ATEGO1718, ATEGO1725, ATEGO2425, L1620, L1622, L2325, L2635, L2638, LB2325, LK2325, LK2638, LS1625, LS1630, LS1632, LS1634, LS1929 (FASE II), LS1932, LS1933, LS1934, LS1935, LS1938, LS1941, LS2635, LS2638, O370, O370 R, O370 RS, O370 RSD, O371 R, O371 RS, O371 RSD, O371 RSE, O371 RSL, O371 U, O371 UP, O400, O400 RS, O400 RSD, O400 RSE, O400 RSL, O400 UP, O500, O500 M, O500 R, O500 U, OF1218, OF1319, OF1417, OF1418, OF1618, OF1620, OF1620 PLUS, OF1721, OF1722, OH1421 L, OH1621 L, OH1625, OH1625 L, OH1628 L, OH1635 L | VW: 15.180E OD MWM EURO 3, 15.180EOD, 15.190E OD MWM EURO 3, 15.190EOD, 16.180CO, 16.210CO, 17.180 CUMMINS EURO 3, 17.180 MWM EURO 3, 17.210, 17.210 OD C/DIR.A DIREITA, 17.210E OD, 17.210OD, 17.220, 17.220 CUMMINS EURO 3, 17.220 MWM EURO 3, 17.240OT, 17.250E, 17.260EOT, 17.300, 17.310, 18.310, 18.310OT, 18.320EOT, 23.210, 23.220, 23.250E, 23.310, 24.220, 24.220 CUMMINS EURO 3, 24.220 MWM EURO 3, 24.250, 24.250 CHILE, 24.250E, 26.220, 26.260, 26.260E, 26.300, 26.310, 31.260, 31.260E, 31.310, 40.300, 40.300 LEITO

WABCO: 4411005392

NTI: 018154 | WABCO: 4411005392



SENSOR SERVO EMBR. WABCO 1938/1944/
2638/AXOR2036
SENSOR SERVO EMBR. WABCO 1938/1944/
2638/AXOR2036
SENSOR CLUTCH SERVO WABCO 1938



SERVO EMBR. =LONGO=
SERVO EMBRAGUE
CLUTCH SERVO (LONG)

MERCEDES: 1938S, 1944S, 2638B, 2638S, ATEGO1729, ATEGO2429, ATRON 2729, AXOR1933, AXOR2036, AXOR2041, AXOR2533, AXOR2536, AXOR2541, AXOR2544, AXOR2641, AXOR2644, AXOR2831, AXOR3341, AXOR3344, AXOR4141, AXOR4144, O500 RSD

WABCO: 9700513554

NTI: 018642 | WABCO: 9700513554



SUPORTE EMBOLO SERVO EMBREAGEM
SUPORTE EMBOLO SERVO EMBRAGUE
BRACKET PISTON CLUTCH SERVO



SERVO EMBR. CARCAÇA LONGA TP WABCO
SERVO EMBRAGUE
CLUTCH SERVO LONG HOUSING WABCO

IVECO: NOVO STRALIS | MERCEDES: 1938S, 1944S, 2638S, ATEGO1729, ATEGO2429, ATRON 2729, AXOR1933, AXOR2036, AXOR2533, AXOR2831, AXOR3341, AXOR3344, AXOR4141, AXOR4144, L2638, LK2638, LS1938, LS2638, O371 RS, O371 RSD, O371 SRE, O400, O400 RS, O400 RSD, O400 RSE, O400 RSL, O400 UP, O500 RSD, OH1625 L, OH1628 L, OH1635 L

WABCO: 9700511000 T

NTI: 018824 | NTI: 022912 | WABCO: 9700511000 T, 9709020174 T



TAMPA SERVO EMBR. CANECA LONGA =
WABCO=
TAPA SERVO DE EMBRAGUE CARCAZA
LONGA WABCO
CLUTCH SERVO COVER LONG HOUSING
WABCO



SERVO EMBR. CANECA LONGA =WABCO=
SERVO DE EMBRAGUE CARCAZA LONGA
WABCO
CLUTCH SERVO LONG HOUSING WABCO

VW: 15.180EOD, 15.190EOD, 16.270CO, 17.210E OD, 17.240CO, 17.260CO

WABCO: 9700510010

NTI: 019441 | NTI: 022551 | WABCO: 9700510010, 9701500010



SERVO EMBR. MOD. ELETRONICO ACTROS/
AXOR
SERVO DE EMBRAGUE =ACTROS=
CLUTCH SERVO =ACTROS=

DIVERSOS: - | MERCEDES: ACTROS 2546, ACTROS 2646, ACTROS 2655, ACTROS 4844, ACTROS TODOS COM CAMBIO AUTOMATICO, ATEGO TODOS COM CAMBIO AUTOMATICO, ATRON TODOS COM CAMBIO AUTOMATICO, AXOR TODOS COM CAMBIO AUTOMATICO

KNORR: K033411

NTI: 019631 | KNORR: K033411 | NTI: 022255



CIL. ACION.EMBR.36MM.CONSTEL.HASTE LONGA
CILINDRO DE EMBRAGUE 36MM CONSTELLATION
CLUTCH CYLINDER 36MM CONSTELLATION

VW: 13.180E CONSTELLATION, 15.180E CONSTELLATION, 17.250E CONSTELLATION, 24.250ECONSTELLATION

KNORR: 0022951607

NTI: 024356 | MERCEDES: 0022951607 | NTI: 024357



CIL. ACION.EMBR.ACCELO 712/715
CIL. ACION.EMBR.ACCELO 712/715
CLUTCH CYLINDER ACCELO 712/715

MERCEDES: 712, ACCELO715C

KNORR: K033409

NTI: 018730 | KNORR: K033409 | NTI: 018861



CIL. ACION.EMBR.DIAM.36MM.COSTEL.HASTE CURTA
CILINDRO EMBRAGUE 36MM CONSTELLATION
CLUTCH CYLINDER 36MM CONSTELLATION



HASTE ACION. CIL. 143X12 CURTA
HASTE ACION. CIL. 143X12 CURTA
ROD 143 X 12

VW: 17.320E CONSTELLATION, 19.320E CONSTELLATION, 19.370 CONSTELLATION, 24.320ECONSTELLATION, 25.320 CONSTELLATION, 25.370E CONSTELLATION, 26.260 CONSTELLATION, 31.260 CONSTELLATION, 31.320E CONSTELLATION, 31.370E CONSTELLATION

KNORR: 523670

NTI: 001730 | NTI: 003516, 022585 | SCANIA: 1112542, 204525, 363808, 523669, 523670



CIL. ACION.FREIO MOTOR 111/2
CILINDRO FRENO MOTOR 111/2
ENGINE BRAKE CYLINDER 111/2

SCANIA: 111, F112, K112, LK140, LK141, R112, R142, T112, T142

KNORR: K043961

NTI: 019620 | KNORR: K043961 | NTI: 019621



CIL. EMBR. C/ RESERV. =FORD=
CILINDRO DE EMBRAGUE =FORD=
CLUTCH CYLINDER W/ RESERVOIR -FORD-

FORD: 1317 4X2, 1419 4X2, 1517 4X2, 1519 4X2, 1717 4X2, 1719 4X2, 1722 4X2, 1723 4X2, 1729 4X2, 1932 4X2, 1933 4X2, 2422 6X2, 2423 6X2, 2428 6X2, 2429 6X2, 2622 6X4, 2623 6X4, 2628 6X4, 2629 6X4, 2632 6X4, 3132 6X4, 3133 6X4

KNORR: K032123

NTI: 027944 | KNORR: K032123 | NTI: 027945



CIL. MESTRE EMBREAGEM
CILINDRO EMBRAGUE FH
CLUTCH MASTER CYLINDER FH4/FM4

VOLVO: FH4, FM4





KNORR: K0112700061

NTI: 018826 | KNORR: K0112700061



REP. CIL. EMBREAGEM CONSTELLATION=
34MM
REP. CIL. EMBREAGEM CONSTELLATION=
34MM
CLUTCH CYLINDER REPAIR KIT



CIL. ACION.EMBR.DIAM.36MM.COSTEL.HASTE
CURTA
CILINDRO EMBRAGUE 36MM
CONSTELLATION
CLUTCH CYLINDER 36MM CONSTELLATION

VW: 17-330 CONSTELLATION ADVANTECH, 17.320E CONSTELLATION, 19-330T CONSTELLATION ADVANTECH, 19-390T CONSTELLATION ADVANTECH,
19.320E CONSTELLATION, 19.370 CONSTELLATION, 24.320ECONSTELLATION, 25-390T CONSTELLATION ADVANTECH, 25.320 CONSTELLATION, 25.370E CONSTELLATION,
26-280 CONSTELATIOM ADVANTECH, 26-390T CONSTELLATION ADVANTECH, 26-420T CONSTELLATION ADVANTECH, 26.260 CONSTELLATION,
31-330 CONSTELLATION ADVANTECH, 31-390 CONSTELLATION ADVANTECH, 31.260 CONSTELLATION, 31.320E CONSTELLATION, 31.370E CONSTELLATION

KNORR: K0112700062

NTI: 018243 | KNORR: K0112700062 | NTI: 021621



REP. CIL. EMBREAGEM CONSTELLATION=
36MM
REPARACION CILINDRO DE EMBRAGUE
CLUTCH CYLINDER REPAIR KIT



CIL. ACION.EMBR.DIAM.36MM.COSTEL.HASTE
CURTA
CILINDRO EMBRAGUE 36MM
CONSTELLATION
CLUTCH CYLINDER 36MM CONSTELLATION

VW: 17-330 CONSTELLATION ADVANTECH, 17.320E CONSTELLATION, 19-330T CONSTELLATION ADVANTECH, 19-390T CONSTELLATION ADVANTECH,
19.320E CONSTELLATION, 19.370 CONSTELLATION, 24.320ECONSTELLATION, 25-390T CONSTELLATION ADVANTECH, 25.320 CONSTELLATION, 25.370E CONSTELLATION,
26-280 CONSTELATIOM ADVANTECH, 26-390T CONSTELLATION ADVANTECH, 26-420T CONSTELLATION ADVANTECH, 26.260 CONSTELLATION,
31-330 CONSTELLATION ADVANTECH, 31-390 CONSTELLATION ADVANTECH, 31.260 CONSTELLATION, 31.320E CONSTELLATION, 31.370E CONSTELLATION

KNORR: 41035649

NTI: 017157 | IVECO: 41035502, 41035647, 41035649, 5802192366, 98420498, 98438178 | NTI: 022563



SERVO EMBR. N.STRALIS/N.TRAKKER 3
ROSCAS =KNORR
SERVO DE EMBRAGUE IVECO STRALIS =
KNORR=
CLUTCH SERVO IVECO STRALIS KNORR

IVECO: CURSOR, EUROCARGO, EUROTECH, EUROTRAKKER, NOVO STRALIS, NOVO TRAKKER, POWERSTAR, STRALIS, TRAKKER

KNORR: K002173

NTI: 023733 | KNORR: K002173, VG3286 | NTI: 023861



SERVO EMBR. STRALIS
SERVO EMBR. STRALIS
CLUTCH SERVO FOR IVECO STRALIS

IVECO: CURSOR, EUROCARGO, EUROTECH, EUROTRAKKER, NOVO STRALIS, NOVO TRAKKER, POWERSTAR, STRALIS, TRAKKER

KNORR: 42568691

NTI: 024573 | IVECO: 42560762, 42561466, 42568691, 42569800 | NTI: 024720, 024880, 027282, 027319, 027320



SERVO EMBREAGEM =STRALIS=
SERVO EMBREAGEM =STRALIS=
CLUTCH SERVO IVECO STRALIS

DIVERSOS: - | IVECO: NOVO STRALIS, NOVO TRAKKER | MAN: TGA, TGM

KNORR: 85117701 V

NTI: 027973 | VOLVO: 20569775 V, 20583314 V, 22279199 V, 22279233 V, 8171512 V, 85117701 V



SERVO EMBREAGEM VOLVO
SERVO EMBREAGEM VOLVO
CLUTCH SERVO VOLVO

VOLVO: B12B, B12M, FH, FM

KNORR: K0107167

NTI: 027972 | KNORR: K0107167



SERVO EMBREAGEM VOLVO
SERVO EMBREAGEM VOLVO
CLUTCH SERVO VOLVO

VOLVO: B12B, B12M, FH, FM



KNORR: K036633

NTI: 018069 | KNORR: K036633 | NTI: 022559, 024302



SERVO MID 83MM =ROSCA M12X1.5=
SERVO DE EMBRAGUE 83MM
CLUTCH SERVO 83MM W/ THREAD M12X1,5

VW: 13-190 CONSTELLATION ADVENTECH, 13.180E CONSTELLATION, 15-190 CONSTELLATION ADVANTECH, 15.180E CONSTELLATION, 17-190 CONSTELLATION ADVANTECH, 17-330 CONSTELLATION ADVANTECH, 17.250E CONSTELLATION, 17.320E CONSTELLATION, 19-390T CONSTELLATION ADVANTECH, 19.320E CONSTELLATION, 19.370 CONSTELLATION, 24.250ECONSTELLATION, 24.320ECONSTELLATION, 25-390T CONSTELLATION ADVANTECH, 25.320 CONSTELLATION, 25.370E CONSTELLATION, 26-280 CONSTELATIOM ADVANTECH, 26-390T CONSTELLATION ADVANTECH, 26-420T CONSTELLATION ADVANTECH, 26.260 CONSTELLATION, 31-280 CONSTELLATION ADVANTECH, 31-330 CONSTELLATION ADVANTECH, 31-390 CONSTELLATION ADVANTECH, 31.260 CONSTELLATION, 31.320E CONSTELLATION, 31.370E CONSTELLATION

KNORR: SM1PLA

NTI: 022595 | KNORR: K021874, K021874N00, SM1PLA | NTI: 024266



SERVO MID EUROCARGO/TECTOR =KNORR=
SERVO MID EUROCARGO/TECTOR =KNORR=
CLUTCH SERVO MID

IVECO: CC118 E20 ONIBUS, CC118 E22 ONIBUS, CC170 E22 ONIBUS, EUROCARGO, TECTOR

KNORR: K004297 C

NTI: 016533 | KNORR: K004297 C



CIL. SERVO EMBR. STRALIS =KNORR=
CIL. SERVO EMBR. STRALIS =KNORR=
CLUTCH SERVO HOUSING STRALIS KNORR



SERVO EMBR. N.STRALIS/N.TRACKER 3
ROSCAS =KNORR
SERVO DE EMBRAGUE IVECO STRALIS =
KNORR=
CLUTCH SERVO IVECO STRALIS KNORR

IVECO: CURSOR, EUROCARGO, EUROTECH, EUROTRAKKER, NOVO STRALIS, NOVO TRAKKER, POWERSTAR, STRALIS, TRAKKER

KNORR: K013727 P

NTI: 024643 | KNORR: K013727 P | NTI: 024644



REP. SERVO EMBR. AUTOM. C/BOBINA =
PARCIAL=
REP. SERVO EMBR. AUTOM. C/BOBINA =
PARCIAL=
CLUTCH SERVO PARTIAL REP.KIT FOR
AUTOMATIC GEARBOX



SERVO EMBREAGEM =STRALIS=
SERVO EMBREAGEM =STRALIS=
CLUTCH SERVO IVECO STRALIS

IVECO: NOVO STRALIS, NOVO TRAKKER | MAN: TGA, TGM

KNORR: K013727

NTI: 024551 | KNORR: K013727 | NTI: 024552



REP. SERVO EMBR. AUTOMATICO
REP. SERVO EMBR. AUTOMATICO
CLUTCH SERVO REP. KIT FOR AUTOMATIC
GEARBOX IVECO



SERVO EMBREAGEM =STRALIS=
SERVO EMBREAGEM =STRALIS=
CLUTCH SERVO IVECO STRALIS

IVECO: NOVO STRALIS, NOVO TRAKKER | MAN: TGA, TGM



KNORR: 42536490

NTI: 024690 | IVECO: 42536490 | NTI: 024691


 REP. SERVO EMBR. C/BOBINA KNORR
 REP. SERVO EMBR. C/BOBINA KNORR
 CLUTCH SERVO REPAIR KIT WITH COIL
 KNORR TYPE

 SERVO EMBREAGEM =STRALIS=
 SERVO EMBREAGEM =STRALIS=
 CLUTCH SERVO IVECO STRALIS

IVECO: NOVO STRALIS, NOVO TRAKKER

KNORR: II35696008 AP

NTI: 027211 | KNORR: II35696008 AP


 REP. SERVO EMBR. CARCAZA ALUMINIO
 KNORR
 KIT REP. SERVO EMBRAGUE CARCAZA DE
 ALUMINIUM
 REPAIR KIT CLUTCH SERVO ALUMINIUM
 HOUSING

 SERVO EMBREAGEM STRALIS
 SERVO EMBREAGEM STRALIS
 CLUTCH SERVO IVECO STRALIS

IVECO: CURSOR, EUROCARGO, EUROTECH, EUROTRAKKER, NOVO STRALIS, NOVO TRAKKER, POWERSTAR, STRALIS, TRAKKER

KNORR: II35696008 A

NTI: 015873 | KNORR: II35696008 A | NTI: 023234


 REP. SERVO EMBR. CARCAZA ALUMINIO
 KNORR
 KIT REP. SERVO EMBRAGUE CARCAZA DE
 ALUMINIUM
 REPAIR KIT CLUTCH SERVO ALUMINIUM
 HOUSING

 SERVO EMBREAGEM STRALIS
 SERVO EMBREAGEM STRALIS
 CLUTCH SERVO IVECO STRALIS

IVECO: CURSOR, EUROCARGO, EUROTECH, EUROTRAKKER, NOVO STRALIS, NOVO TRAKKER, POWERSTAR, STRALIS, TRAKKER

KNORR: II35696008 P

NTI: 027210 | KNORR: II35696008 P


 REP. SERVO EMBR. CARCAZA FERRO
 KNORR
 KIT REP. SERVO EMBRAGUE CARCAZA DE
 FIERRO KNORR
 REPAIR KIT CLUTCH SERVO IRON HOUSING
 KNORR

 SERVO EMBR. N.STRALIS/N.TRAKKER 3
 ROSCAS =KNORR
 SERVO DE EMBRAGUE IVECO STRALIS =
 KNORR=
 CLUTCH SERVO IVECO STRALIS KNORR

IVECO: CURSOR, EUROCARGO, EUROTECH, EUROTRAKKER, NOVO STRALIS, NOVO TRAKKER, POWERSTAR, STRALIS, TRAKKER

KNORR: II35696008

NTI: 014716 | KNORR: II35696008 | NTI: 023210


 REP. SERVO EMBR. CARCAZA FERRO
 KNORR
 KIT REP. SERVO EMBRAGUE CARCAZA DE
 FIERRO KNORR
 REPAIR KIT CLUTCH SERVO IRON HOUSING
 KNORR

 SERVO EMBR. TRAKKER/EUROTECH 2
 ROSCAS =KNORR=
 SERVO EMBR. TRAKKER/EUROTECH 2
 ROSCAS =KNORR=
 CLUTCH SERVO IVECO STRALIS KNORR

IVECO: CURSOR, EUROCARGO, EUROTECH, EUROTRAKKER, NOVO STRALIS, NOVO TRAKKER, POWERSTAR, STRALIS, TRAKKER



KNORR: K0124040061

NTI: 012370 | KNORR: K0124040061 | NTI: 012327



REP. SERVO EMBR. CONSTELLATION =
COMPLETO=
REPARACION SERVO EMBRAGUE
CLUTCH SERVO REPAIR KIT
CONSTELLATION

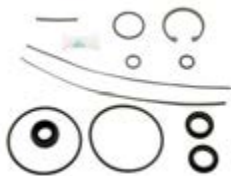


SERVO MID 83MM =ROSCA M12X1.5=
SERVO DE EMBRAGUE 83MM
CLUTCH SERVO 83MM W/ THREAD M12X1,5

VW: 13-190 CONSTELLATION ADVENTECH, 13.180E CONSTELLATION, 15-190 CONSTELLATION ADVANTECH, 15.180E CONSTELLATION,
17-190 CONSTELLATION ADVANTECH, 17-330 CONSTELLATION ADVANTECH, 17.250E CONSTELLATION, 17.320E CONSTELLATION,
19-390T CONSTELLATION ADVANTECH, 19.320E CONSTELLATION, 19.370 CONSTELLATION, 24.250ECONSTELLATION, 24.320ECONSTELLATION,
25-390T CONSTELLATION ADVANTECH, 25.320 CONSTELLATION, 25.370E CONSTELLATION, 26-280 CONSTELLATION ADVANTECH, 26-390T CONSTELLATION ADVANTECH,
26-420T CONSTELLATION ADVANTECH, 26.260 CONSTELLATION, 31-280 CONSTELLATION ADVANTECH, 31-330 CONSTELLATION ADVANTECH,
31-390 CONSTELLATION ADVANTECH, 31.260 CONSTELLATION, 31.320E CONSTELLATION, 31.370E CONSTELLATION

KNORR: K0124040061 P

NTI: 016350 | KNORR: K0124040061 P | NTI: 022920



REP. SERVO EMBR. CONSTELLATION =
PARCIAL=
KIT REP. SERVO EMBRAGUE VW
REPAIR KIT CLUTCH SERVO VW



SERVO MID 83MM =ROSCA M12X1.5=
SERVO DE EMBRAGUE 83MM
CLUTCH SERVO 83MM W/ THREAD M12X1,5

VW: 13-190 CONSTELLATION ADVENTECH, 13.180E CONSTELLATION, 15-190 CONSTELLATION ADVANTECH, 15.180E CONSTELLATION,
17-190 CONSTELLATION ADVANTECH, 17-330 CONSTELLATION ADVANTECH, 17.250E CONSTELLATION, 17.320E CONSTELLATION,
19-390T CONSTELLATION ADVANTECH, 19.320E CONSTELLATION, 19.370 CONSTELLATION, 24.250ECONSTELLATION, 24.320ECONSTELLATION,
25-390T CONSTELLATION ADVANTECH, 25.320 CONSTELLATION, 25.370E CONSTELLATION, 26-280 CONSTELLATION ADVANTECH, 26-390T CONSTELLATION ADVANTECH,
26-420T CONSTELLATION ADVANTECH, 26.260 CONSTELLATION, 31-280 CONSTELLATION ADVANTECH, 31-330 CONSTELLATION ADVANTECH,
31-390 CONSTELLATION ADVANTECH, 31.260 CONSTELLATION, 31.320E CONSTELLATION, 31.370E CONSTELLATION

KNORR: K0124040062

NTI: 021935 | KNORR: K0124040062 | NTI: 022579



REP. SERVO EMBR. CONSTELLATION C/
PISTAO =KNORR=
REPARACION SERVO EMBRAGUE
CLUTCH SERVO REPAIR KIT
CONSTELLATION



SERVO MID 83MM =ROSCA M12X1.5=
SERVO DE EMBRAGUE 83MM
CLUTCH SERVO 83MM W/ THREAD M12X1,5

VW: 13-190 CONSTELLATION ADVENTECH, 13.180E CONSTELLATION, 15-190 CONSTELLATION ADVANTECH, 15.180E CONSTELLATION,
17-190 CONSTELLATION ADVANTECH, 17-330 CONSTELLATION ADVANTECH, 17.250E CONSTELLATION, 17.320E CONSTELLATION,
19-390T CONSTELLATION ADVANTECH, 19.320E CONSTELLATION, 19.370 CONSTELLATION, 24.250ECONSTELLATION, 24.320ECONSTELLATION,
25-390T CONSTELLATION ADVANTECH, 25.320 CONSTELLATION, 25.370E CONSTELLATION, 26-280 CONSTELLATION ADVANTECH, 26-390T CONSTELLATION ADVANTECH,
26-420T CONSTELLATION ADVANTECH, 26.260 CONSTELLATION, 31-280 CONSTELLATION ADVANTECH, 31-330 CONSTELLATION ADVANTECH,
31-390 CONSTELLATION ADVANTECH, 31.260 CONSTELLATION, 31.320E CONSTELLATION, 31.370E CONSTELLATION

KNORR: K015222 R

NTI: 017923 | KNORR: K015222 R | NTI: 023232



REP. SERVO EMBR. MID IVECO
KIT REP. SERVO DE EMBRAGUE MID IVECO
REPAIR KIT CLUTCH SERVO MID IVECO



SERVO EMBR. MID
SERVO EMBR. MID
CLUTCH SERVO MID

IVECO: EUROCARGO, TECTOR

KNORR: SM1A05021

NTI: 016407 | KNORR: SM1A05021 | NTI: 022913



REP. SERVO EMBR. MID SI/ GUIA PISTAO =
IVECO=
KIT REPARACION SERVO DE EMBRAGUE SIN
PISTON =IVEC=
REPAIR KIT CLUTCH SERVO W/O PISTON =
IVECO=



SERVO MID EUROCARGO/TECTOR =KNORR=
SERVO MID EUROCARGO/TECTOR =KNORR=
CLUTCH SERVO MID

IVECO: CC118 E20 ONIBUS, CC118 E22 ONIBUS, CC170 E22 ONIBUS, EUROCARGO, TECTOR

KNORR: 0085860342

NTI: 012981 | MERCEDES: 0085860342 | NTI: 023077



REP. SERVO FREIO 1113
KIT REP. SERVO FRENO
REPAIR KIT BRAKE BOOSTER 1113



SERVO FREIO 1113
SERVO FREIO 1113
CLUTCH SERVO MB 1113

MERCEDES: L1113, L1114, L1118, L1313, L1316, LA1113, LA1313, LAK1113, LAK1313, LK1113, LK1313, LK1316, LS1113, LS1313, LS1316

KNORR: 983455860343

NTI: 007433 | KNORR: 983455860343 | NTI: 022964



REP. SERVO FREIO 1113 (VENENO)
KIT REP. SERVO FRENO
REPAIR KIT BRAKE BOOSTER 1113



SERVO FREIO 1113
SERVO FREIO 1113
CLUTCH SERVO MB 1113

MERCEDES: 1111, 1113, 1313

KNORR: 9481083004

NTI: 004135 | KNORR: 9481083004



REP. SERVO FREIO 608 COMP. =KNORR=
REPARO SERVO FRENO 608 COMPLETO -
KNORR
BRAKE BOOSTER REPAIR KIT 608 KNORR



SERVO FREIO 608/708
SERVO FREIO 608/708
CLUTCH SERVO MB 608/708

MERCEDES: L608D, L608E, L708D, L708E

KNORR: 9481083004 P

NTI: 009939 | KNORR: 9481083004 P



REP. SERVO FREIO 608 PARCIAL =KNORR=
JG. REPAROS SERVO-FRENO OM.314
BRAKE BOOSTER REPAIR KIT 608 (PARTIAL)
KNORR



SERVO FREIO 608/708
SERVO FREIO 608/708
CLUTCH SERVO MB 608/708

MERCEDES: L608D, L608E, L708D, L708E

KNORR: 42536490 R

NTI: 023058 | IVECO: 42536490 R



REP. SERVO EMBR. AUTOM.
REP. SERVO EMBR. AUTOM.
CLUTCH SERVO AUTOMATIC REP. KIT



SERVO EMBREAGEM =STRALIS=
SERVO EMBREAGEM =STRALIS=
CLUTCH SERVO IVECO STRALIS

IVECO: NOVO STRALIS, NOVO TRAKKER



KNORR: 75914710

NTI: 019224 | KNORR: 75914710 | NTI: 022744



RESERV. SERVO EMBR. MID
 RESERV. SERVO EMBRAGUE MID
 RESERVOIR CLUTCH SERVO MID



SERVO MID 83MM =ROSCA M12X1.5=
 SERVO DE EMBRAGUE 83MM
 CLUTCH SERVO 83MM W/ THREAD M12X1,5

VW: 13-190 CONSTELLATION ADVANTECH, 13.180E CONSTELLATION, 15-190 CONSTELLATION ADVANTECH, 15.180E CONSTELLATION,
 17-190 CONSTELLATION ADVANTECH, 17-330 CONSTELLATION ADVANTECH, 17.250E CONSTELLATION, 17.320E CONSTELLATION,
 19-390T CONSTELLATION ADVANTECH, 19.320E CONSTELLATION, 19.370 CONSTELLATION, 24.250ECONSTELLATION, 24.320ECONSTELLATION,
 25-390T CONSTELLATION ADVANTECH, 25.320 CONSTELLATION, 25.370E CONSTELLATION, 26-280 CONSTELATIOM ADVANTECH, 26-390T CONSTELLATION ADVANTECH,
 26-420T CONSTELLATION ADVANTECH, 26.260 CONSTELLATION, 31-280 CONSTELLATION ADVANTECH, 31-330 CONSTELLATION ADVANTECH,
 31-390 CONSTELLATION ADVANTECH, 31.260 CONSTELLATION, 31.320E CONSTELLATION, 31.370E CONSTELLATION

VARGA: RCCE00181

NTI: 019223 | NTI: 022775 | VARGA: RCCE00181



CIL. AUX. EMBREAGEM
CILINDRO AUX. EMBRAGUE
CYLINDER CLUTCH AUX.

FORD: CARGO 1113, CARGO 1215, CARGO 1218, CARGO 1313, CARGO 1415, CARGO 1418, CARGO 1615, CARGO 1618, CARGO 2217

VARGA: 2VB721405

NTI: 013494 | NTI: 023771 | VW: 2VB721405



CIL. MESTRE EMBREAGEM
CILINDRO MAETRO EMBRAGUE
CLUTCH MASTER CYLINDER

VW: 13.150, 13.170, 13.190, 17.180 CUMMINS EURO 3, 17.180 MWM EURO 3, 17.210, 17.220, 17.220 CUMMINS EURO 3, 17.220 MWM EURO 3, 17.300, 24.220, 24.220 CUMMINS EURO 3, 24.220 MWM EURO 3, 24.250, 26.300, 40.300, 7.100, 7.110, 7.120, 8.120, 8.120OD, 8.140CE, 8.140CO, 8.150, 8.150 OD, 9.150OD

VARGA: TF3721405

NTI: 004560 | NTI: 021629, 022625 | VW: TAR721405, TE3721405, TF3721405



CIL. MESTRE EMBREAGEM DIAM. 22,22MM
CILINDRO MESTRE DE EMBRAGUE
CLUTCH MASTER CYLINDER

VW: 12.140H, 12.140T, 12.170BT, 12.180, 14.150, 14.170BT, 14.180, 14.200, 14.220, 15.180EOD, 15.190EOD, 16.170, 16.180CO, 16.200, 16.210, 16.210CO, 16.220, 16.220 LEITO, 16.300, 17.210OD, 17.240OT, 17.260EOT, 18.310OT, 18.320EOT, 24.220, 24.250, 35.300, 35.300 LEITO, 40.300, 40.300 LEITO, 7.100, 7.110S, 7.90S, 8.100, 8.140, 8.140CE, 8.140CKD, 8.140CO, 9.150OD, L.80



BENDIX: 537194

NTI: 001887 | NTI: 022608 | SCANIA: 537194



CIL. EMBR. C/ RESERV. 112 =ALUMINIO=
 CILINDRO DE EMBRAGUE CON RECIPIENTE
 CLUTCH CYLINDER ALUMINUM (W/
 RESERVOIR)

SCANIA: R112, R142, T112, T142

BENDIX: 537194 D

NTI: 015165 | NTI: 022846 | SCANIA: 537194 D



CIL. EMBR. C/ RESERV. 112 =FERRO=
 CILINDRO EMBRAGUE C/ RESERV. 112 =
 FERRO=
 CLUTCH CYLINDER IRON (W/ RESERVOIR)

SCANIA: R112, R142, T112, T142

BENDIX: 537194 A

NTI: 003513 | NTI: 022848 | SCANIA: 537194 A



CIL. EMBR. S/ RESERV. 112 =ALUMINIO=
 CILINDRO DE EMBRAGUE SIN RECIPIENTE
 112
 CLUTCH CYLINDER ALUMINUM (NO
 RESERVOIR)

SCANIA: R112, R142, T112, T142

BENDIX: 537194 F

NTI: 015166 | NTI: 022847 | SCANIA: 537194 F



CIL. EMBR. S/ RESERV. 112 =FERRO=
 CILINDRO EMBRAGUE S/ RESERV. 112 =
 FERRO=
 CLUTCH CYLINDER IROW W/ RESERVOIR

SCANIA: R112, R142, T112, T142

BENDIX: 538919

NTI: 001921 | NTI: 022708 | SCANIA: 538919



REP. CIL. EMBR. 112 =TIPO BENDIX=
 REPARO CIL. EMBRAGUE 112
 CLUTCH CYLINDER REPAIR KIT 112 BENDIX
 TYPE



CIL. EMBR. C/ RESERV. 112 =FERRO=
 CILINDRO EMBRAGUE C/ RESERV. 112 =
 FERRO=
 CLUTCH CYLINDER IRON (W/ RESERVOIR)

SCANIA: R112, R142, T112, T142

DIVERSOS: 1345149

NTI: 007993 | SCANIA: 1345149



CANECA REDUZIDA 06 MARCHAS 94/114/24/
64
VALVULA
REDUCTION GEAR HOUSING 890/900 94/114/
24/64

DIVERSOS: - | SCANIA: 114, 124, 164, 94, P.G.R.

DIVERSOS: 284015

NTI: 001192 | SCANIA: 284015



CANECA REDUZIDA 111/112
CILINDRO DEL CAMBIO 111/112
REDUCTION GEAR HOUSING 111/112

DIVERSOS: - | SCANIA: R112, R113, R142, R143, T112, T113, T142

DIVERSOS: 1526816 V

NTI: 007438 | NTI: 022670, 022671, 022672 | VOLVO: 1526816 V



CANECA REDUZIDA NH/FH
CARCAZA REDUCIDA NH/FH
REDUCTION GEAR HOUSING NH/FH

DIVERSOS: - | VOLVO: EDC, FH12, NH12, NL10, NL12

DIVERSOS: 1345151

NTI: 009066 | SCANIA: 1304161, 1326847, 1345151, 1484809



CANECA TRANSF. 06/08 MARCHAS 113/S4
CILINDRO CAJA CAMBIO
TRANSFER GEAR BOX HOUSING P93/113/143/
S.4

DIVERSOS: - | SCANIA: 114, 124, 164, 94, K113, K114, K124, K94, P.G.R., P93, R113, R143, T113

DIVERSOS: 1321420

NTI: 009744 | SCANIA: 1321420, 1484807, 1484808



CANECA TRANSF. 06/08 MARCHAS 113/S4
CILINDRO
TRANSFER GEAR HOUSING



EIXO CANECA TRANSF. CX. CAMBIO S.4
EJE CAJA DE CAMBIO
GEARBOX HOUSING AXLE

DIVERSOS: - | SCANIA: 114, 124, 164, 94, K113, K114, K124, K94, P.G.R., P93, R113, R143, T113

DIVERSOS: 1527363 V

NTI: 006051 | NTI: 022787, 022788, 022789, 022790 | VOLVO: 1527363 V, 1662959 V



CANECA TRANSF. N/NL10/12/EDC
CARCAZA CILINDRO TRANSFERENCIA
TRANSFER GEAR BOX HOUSING N/NL10/12/
EDC

DIVERSOS: - | VOLVO: EDC, FH12, FM12, NH12, NL10, NL12



DIVERSOS: 1656239 V

NTI: 015102 | VOLVO: 1652857 V, 1656239 V



CANECA TRANSFERENCIA FH/NH
CANECA TRANSFERENCIA FH/NH
TRANSFER GEAR BOX HOUSING

DIVERSOS: - | VOLVO: B10B, B10R, B12, B12B, B7R, B9R, FH12, FH16, FM12, FM9, N10, NH12, NL10, NL12

DIVERSOS: 43234474

NTI: 026416 | IVECO: 42534474, 42557497, 43234474



CANECA TRAS. CX. TRANSF. CX. CAMBIO
CANECA TRAS. CX. TRANSF. CX. CAMBIO
CANECA TRAS. CX. TRANSF. CX. CAMBIO

DIVERSOS: - | IVECO: EUROTECH, EUROTRAKKER, NOVO STRALIS, NOVO TRAKKER, STRALIS, TRAKKER

DIVERSOS: 2S2298109

NTI: 017728 | VW: 2S2298109



CIL. ACION. FREIO MOTOR
CIL. ACION. FREIO MOTOR
ENGINE BRAKE CYLINDER

DIVERSOS: - | VW: 13.180E CONSTELLATION, 15.180E CONSTELLATION, 17.180 CUMMINS EURO 3, 17.180 MWM EURO 3, 17.220, 17.220 CUMMINS EURO 3, 17.220 MWM EURO 3, 17.250E CONSTELLATION, 17.320E CONSTELLATION, 19.320E CONSTELLATION, 19.370 CONSTELLATION, 23.220, 24.220 CUMMINS EURO 3, 24.220 MWM EURO 3, 24.250ECONSTELLATION, 24.320ECONSTELLATION, 25.320 CONSTELLATION, 25.370E CONSTELLATION, 26.220, 26.260 CONSTELLATION, 31.260 CONSTELLATION, 31.320E CONSTELLATION, 31.370E CONSTELLATION

DIVERSOS: 1400769

NTI: 005800 | NTI: 026264, 026829 | SCANIA: 1360598, 1376474, 1400769, 1505927, 20405258



CIL. ACION. FREIO MOTOR - SERIE 4
CILINDRO ACION. FRENO MOTOR - SERIE 4
ENGINE BRAKE CYLINDER S4

DIVERSOS: - | SCANIA: 114, 124, 94, F94, K114, K124, K94

DIVERSOS: 1507790

NTI: 018738 | NTI: 026830 | SCANIA: 1507790, 1767201, 1821737



CIL. ACION. FREIO MOTOR - SERIE 5
CILINDRO ACION. FRENO MOTOR - SERIE 5
ENGINE BRAKE CYLINDER S5

DIVERSOS: - | SCANIA: 114, 124, K114, K124, P.G.R.

DIVERSOS: 1673553

NTI: 003490 | NTI: 026831 | SCANIA: 1332503, 1348896, 1673552, 1673553, 1677877, 389012



CIL. ACION. FREIO MOTOR 113
CILINDRO DE FRENO MOTOR
ENGINE BRAKE CYLINDER 113

DIVERSOS: - | SCANIA: F113, K113, L113, P93, R113, R143, T113

DIVERSOS: TAF253861

NTI: 005096 | VW: TAF253861



CIL. ACION. FREIO MOTOR SIST. KNORR
 CILINDRO DE FRENO MOTOR KNORR
 ENGINE BRAKE CYLINDER KNORR

DIVERSOS: - | FORD: 1317E 4X2, 1422, 1517E 4X2, 1622, 1630, 1717E 4X2, 1722, 1730, 1730 ARG., 1731, 2322, 2421, 2422, 2425, 2622, 2626, 3224, 3530, 4030, 4031, 4331, 814/815(96/...), 815, 815E, 815S, 915, B1618 ONIBUS, B1621 ONIBUS | VW: 12.140H, 14.200, 14.220, 16.170, 16.180CO, 16.200, 16.210CO, 16.220, 16.220 LEITO, 16.300, 17.220, 17.250E, 17.300, 17.310, 18.310, 23.220, 23.250E, 23.310, 24.250, 24.250E, 26.220, 26.260, 26.300, 26.310, 31.260, 31.310, 35.300, 35.300H, 40.300, 40.300 LEITO, 7.100, 7.120, 8.100, 8.120, 8.120OD, 8.140, 8.150, 8.150 EOD, 8.150 OD, 8.150E, 8.150E PLUS, 8.150EOD, 9.150E, 9.150E CUMMINS DELIVERY, 9.150EOD, 9.150OD

DIVERSOS: 2RP253861

NTI: 005095 | NTI: 021851 | VW: 2RP253861, 2TK253861



CIL. ACION. FREIO MOTOR SIST. WABCO
 CILINDRO DE FRENO MOTOR WABCO
 ENGINE BRAKE CYLINDER WABCO

DIVERSOS: - | VW: 12.140H, 12.140T, 12.180, 13.170E, 13.180E, 14.150, 14.150 CHILE, 14.180, 14.200, 14.220, 15.170E, 15.180E, 15.180EOD, 15.190E, 15.190EOD, 16.170, 16.180CO, 16.200, 16.220, 16.220 LEITO, 16.300, 17.210OD, 17.220, 17.250E, 17.300, 17.310, 18.310, 23.220, 23.250E, 23.310, 24.220, 24.250, 24.250E, 26.220, 26.260, 26.260E, 26.300, 26.310, 31.260, 31.260E, 31.310, 35.300, 35.300 LEITO, 40.300, 40.300 LEITO, 8.150, 8.150E, 9.150E

DIVERSOS: 20528900 V

NTI: 022635 | VOLVO: 20528900 V



CIL. ACION. FREIO MOTOR SIST. WABCO
 CILINDRO DE FRENO MOTOR WABCO
 ENGINE BRAKE CYLINDER WABCO

DIVERSOS: - | VOLVO: VM 210 4X2, VM 240 4X2, VM 260 4X2

DIVERSOS: 81307156152

NTI: 025297 | MAN: 81307156152



CIL. ACION.EMBR.MAN
 CIL. ACION.EMBR.MAN
 CLUTCH ACTION CLY . MAN

DIVERSOS: - | MAN: TGA

DIVERSOS: 41285167

NTI: 024217 | IVECO: 41285167, 41285278



CIL. ACION.EMBR.N.TRACKER
 CIL. ACION.EMBR.N.TRACKER
 CLUTCH CYLINDER W/ RESERVOIR

DIVERSOS: - | IVECO: NOVO TRAKKER



DIVERSOS: 2P0721405

NTI: 025296 | VW: 2P0721405



CIL. ACION.EMBR.VW
CIL. ACION.EMBR.VW
CLUTCH CYLINDER VW

DIVERSOS: - | VW: 15.180E OD, 15.190E OD, 17.210E OD

DIVERSOS: 1455730

NTI: 006044 | SCANIA: 1123296, 1393332, 1434649, 1455730, 1522377, 522377, 551572



CIL. ATUADOR CENTRAL EMBR. 94/114/24
CILINDRO RECEPTOR
CLUTCH RELESE BEARING 94/114/24

DIVERSOS: - | SCANIA: 114, 124, 164, 94, F94, K114, K124, K94

DIVERSOS: 41211007 C

NTI: 018092 | IVECO: 41211007 C, 41285311 C



CIL. EMBR. C/ RESERV. E SENSOR STRALIS/
TRAKKE/TECH
CIL. EMBR. C/ RESERV. E SENSOR STRALIS/
TRAKKE/TECH
CLUTCH CYLINDER W/ RESERVOIR AND
SENSOR

DIVERSOS: - | IVECO: NOVO STRALIS, NOVO TRAKKER, STRALIS, TRAKKER

DIVERSOS: 41211005

NTI: 017550 | IVECO: 41211005, 41285355



CIL. EMBR. C/ RESERV. EUROTECH/STRALIS
CIL. EMBR. C/ RESERV. EUROTECH/STRALIS
CLUTCH CYLINDER W/ RESERVOIR

DIVERSOS: - | IVECO: EUROCARGO, EUROTECH, EUROTRAKKER

DIVERSOS: BC457A508BB

NTI: 024838 | FORD: BC457A508BB



CIL. EMBR. FORD CARGO
CIL. EMBR. FORD CARGO
CLUTCH CYLINDER FORD

DIVERSOS: - | FORD: 1317 4X2, 1319 4X2, 1419 4X2, 1517 4X2, 1519 4X2, 1717 4X2, 1719 4X2

DIVERSOS: 9792950006A

NTI: 024835 | MERCEDES: 9792950006, 9792950006A



CIL. EMBR. MBB-915/1016
CIL. EMBR. MBB-915/1016
CLUTCH CYLINDER MBB 915/1016

DIVERSOS: - | MERCEDES: 915, ATEGO1016

DIVERSOS: 9792950106

NTI: 024836 | MERCEDES: 9792950106



CIL. EMBR. MBB-LO 815/LO 916
CIL. EMBR. MBB-LO 815/LO 916
CLUTCH CYLINDER MBB-LO 815/LO 916

DIVERSOS: - | MERCEDES: LO815, LO916

DIVERSOS: 1355979

NTI: 017961 | SCANIA: 1355979, 1532517, 1543633, 1545626, 1754943, 532517



CIL. EMBR. S.4 =CX.GR801/GRS890/GRS900/
920=
CILINDRO ACION. EMBRAGUE - SERIE 4
CLUTCH CYLINDER S4

DIVERSOS: - | SCANIA: 114, 124, 164, 94, K114, K124, K94, P.G.R.

DIVERSOS: 1756460

NTI: 019610 | SCANIA: 1756460



CIL. EMBR. S.4 M12X1.5MM (CX.EK630/640)
CILINDRO ACION. EMBRAGUE - SERIE 4
CLUTCH CYLINDER S4

DIVERSOS: - | SCANIA: 114, 124, 164, 94, K114, K124, K94, P.G.R.

DIVERSOS: 20553368 V

NTI: 024837 | VOLVO: 20553368 V



CIL. EMBR. VOLVO VM
CIL. EMBR. VOLVO VM
CLUTCH CYLINDER VOLVO VW

DIVERSOS: - | VOLVO: VM17, VM23

DIVERSOS: 0022952507

NTI: 025928 | MERCEDES: 0022952507, A0022952507 | NTI: 026489, 026490



CIL. EMBREAGEM ACCELO
CIL. EMBREAGEM ACCELO
CLUTCH CYLINDER MB ACCELO

DIVERSOS: - | MERCEDES: ACCELO1016, ACCELO815, ACCELO915C

DIVERSOS: 4854828

NTI: 025927 | IVECO: 4854828 | NTI: 026488



CIL. EMBREAGEM TECTOR/EUROCARGO
CIL. EMBREAGEM TECTOR/EUROCARGO
CLUTCH CYLINDER TECTOR/EUROCARGO

DIVERSOS: - | IVECO: EUROCARGO, ONIBUS CC118E20 GNC, ONIBUS CC118E22, ONIBUS CC170E22, TECTOR



Telefendas: +55 19 3834.9822



+55 54 3211.1800



+55 11 2626.8839

www.ntifreios.com.br



DIVERSOS: 81307156149

NTI: 019618 | MANN: 81307156149, 81307156154, 81307156156



CIL. MASTER EMBR. C/AMPLIF. =MAN EGS=
CIL. MASTER EMBR. C/AMPLIF. =MAN EGS=
CLUTCH MASTER CLY. W/ AMPLIFIER = MAN
EGS=

DIVERSOS: - | MAN: TGA, TGX

DIVERSOS: 1927829

NTI: 018676 | SCANIA: 1523400, 1800442, 1927829



CIL. MASTER EMBREAGEM P.G.R.T
CIL. MASTER EMBREAGEM P.G.R.T
CLUTCH MASTER CYLINDER P.G.R.T.

DIVERSOS: - | SCANIA: PGR-OPTICRUISE C/PED

DIVERSOS: 0022950206

NTI: 017551 | MERCEDES: 0022950206 | NTI: 025709



CIL. MESTRE EMBREAGEM =AXOR ROSCA
M6X1 MM=
CIL. MESTRE EMBREAGEM =AXOR ROSCA
M6X1 MM=
CLUTCH MASTER CYLINDER AXOR

DIVERSOS: - | MERCEDES: AXOR1835 LS, AXOR1840 LS, AXOR1843 LS, AXOR2335 LS, AXOR2540 LS, AXOR2543 LS

DIVERSOS: 0022959106

NTI: 017902 | MERCEDES: 0012959106, 0022959106



CIL. MESTRE EMBREAGEM =MBB= AXOR
CIL. MESTRE EMBREAGEM =MBB= AXOR
CLUTCH MASTER CYLINDER AXOR

DIVERSOS: - | MERCEDES: ACCELO 1016, ACCELO 1315, ATEGO1315, ATEGO1418, ATEGO1419, ATEGO1518, AXOR, L1620

DIVERSOS: 1358801 A

NTI: 003096 | SCANIA: 1105332 A, 1358800 A, 1358801 A, 1361136 A



CIL. MESTRE EMBREAGEM 113 =ALUMINIO=
CILINDRO EMBRAGUE 113
CLUTCH MASTER CYLINDER 113 ALUMINUM

DIVERSOS: - | SCANIA: F113, P93, R113, R143, T113

DIVERSOS: 1358801

NTI: 007263 | SCANIA: 1105332, 1358800, 1358801, 1361136



CIL. MESTRE EMBREAGEM 113 =FERRO=
CILINDRO MAESTRO EMBRAGUE T113
CLUTCH MASTER CYLINDER 113 IRON

DIVERSOS: - | SCANIA: F113, P93, R113, R143, T113

DIVERSOS: 3842957006 | NTI: 012516 | MERCEDES: 3842957006 | NTI: 026095



CIL. MESTRE EMBREAGEM 371/OH1419/1420
CILINDRO MAESTRO EMBRAGUE
CLUTCH MASTER CYLINDER 371/OH1419/
1420

DIVERSOS: - | MERCEDES: L1214, L1418, L1618, L1620, LK1618, O371, OH1419, OH1420

DIVERSOS: 0022950806 | NTI: 017903 | MERCEDES: 0022950806



CIL. MESTRE EMBREAGEM ATEGO =MBB=
CIL. MESTRE EMBREAGEM ATEGO =MBB=
CLUTCH MASTER CYLINDER ATEGO

DIVERSOS: - | MERCEDES: ATEGO1315, ATEGO1418, ATEGO1419, ATEGO1518, ATEGO1718, ATEGO1719, ATEGO1723, ATEGO1725, ATEGO1726, ATEGO1728, ATEGO1729, ATEGO2423, ATEGO2425, ATEGO2426, ATEGO2428, ATEGO2429, AXOR1933, AXOR2035, AXOR2036, AXOR2040, AXOR2041, AXOR2044, AXOR2425, AXOR2428, AXOR2533, AXOR2536, AXOR2540, AXOR2541, AXOR2544, AXOR2640, AXOR2641, AXOR2644, AXOR2825, AXOR2826, AXOR2828, AXOR2831, AXOR3340, AXOR3341, AXOR3344, AXOR4140, AXOR4141, AXOR4143, AXOR4144

DIVERSOS: 20835246 V | NTI: 014970 | VOLVO: 205535588 V, 20553587 V, 20835246 V, 3192696 V, 8172824 V, 85013339 V



CIL. MESTRE EMBREAGEM C/ RESERV. FH12/
FH16
CIL. MESTRE EMBREAGEM C/ RESERV. FH12/
FH16
CLUTCH MASTER CYLINDER FH/D12D (W/
RESERVOIR)

DIVERSOS: - | VOLVO: FH12, FM12, FM9, NH12

DIVERSOS: 1628218 V | NTI: 009624 | VOLVO: 1628218 V, 16282188 V



CIL. MESTRE EMBREAGEM FH /NH12/B12R
CILINDRO EMBRAGUE FH
CLUTCH MASTER CYLINDER FH/NH/FM

DIVERSOS: - | VOLVO: B12M, B7R, FH12, FM12, FM7, NH12

DIVERSOS: 3862957007 | NTI: 012524 | MERCEDES: 3862957007 | NTI: 026379



CIL. MESTRE EMBREAGEM L/LK/LS1621
CILINDRO MAESTRO EMBRAGUE
CLUTCH MASTER CYLINDER L/LK/LS1621

DIVERSOS: - | MERCEDES: L1618, L1620, L1621

DIVERSOS: 3882957006 | NTI: 012525 | MERCEDES: 3882957006 | NTI: 026392



CIL. MESTRE EMBREAGEM L/LS/LK1929/35/41
CILINDRO MAESTRO EMBRAGUE
CLUTCH MASTER CYLINDER L/LS/LK1929/35/
41

DIVERSOS: - | MERCEDES: L1929, L1935, L1941, LK1929, LK1935, LK1941, LS1929, LS1935, LS1941



DIVERSOS: 0012955906

NTI: 012523 | MERCEDES: 0012955906 | NTI: 025422



CIL. MESTRE EMBREAGEM L1929/35/38/41/
LS1625/30/35
CILINDRO MAESTRO EMBRAGUE
CLUTCH MASTER CYLINDER L1929/35/38/41/
LS1625

DIVERSOS: - | MERCEDES: L1929, L1935, L1938, L1941, L709, L812, L912, LK1929

DIVERSOS: A3842950006

NTI: 018810 | MERCEDES: 3842950006, A3842950006



CIL. MESTRE EMBREAGEM MBB
CIL. MESTRE EMBREAGEM MBB
CLUTCH MASTER CYLINDER MBB

DIVERSOS: - | MERCEDES: O500, O500 M, O500 R, O500 RS, O500 RSD, O500 U, OF1218, OF1319, OF1417, OF1418, OF1519, OF1721, OF1722, OF1723, OF1724, OF1730, OH1215 L, OH1518, OH1519, OH1521, OH1526, OH1621 L, OH1622 L, OH1623 L, OH1626 L

DIVERSOS: 1620462 V

NTI: 003515 | VOLVO: 1581209 V, 15812092 V, 1614351 V, 16143513 V, 1620462 V, 16204620 V, 1669488 V, 16694887 V, 8126730 V



CIL. MESTRE EMBREAGEM/NL10/12 B10M/12/
58
CILINDRO DE EMBRAGUE
CLUTCH MASTER CYLINDER N/NL10/12
B10M/12/58

DIVERSOS: - | VOLVO: B10M, B58, N10, N12, NL10, NL12

DIVERSOS: 0000721512

NTI: 009598 | MERCEDES: 0000721512 | NTI: 026492



CILINDRO ACIONAMENTO ACELERADOR MBB
CIL. ACIONAM. FRENO MOTOR
ENGINE BRAKE CYLINDER

DIVERSOS: - | MERCEDES: L1513, L1514, L1516, L1519, L1614, L1618, L1620, L1621, LK1513, LK1514, LK1516, LK1519, LK1618, LK1621, LS1519, LS1524, LS1525

DIVERSOS: 2046284

NTI: 028140 | DAF: 2046284, 2323315, 24055101 | NTI: 028141, 028142, 028785



CILINDRO ATUADOR DAF/MAN
CILINDRO ATUADOR DAF/MAN
CLUTCH RELEASE BEARING DAF/MAN

DAF: XF106 | DIVERSOS: -

DIVERSOS: 22809232 V

NTI: 028134 | VOLVO: 20812087 V, 21320929 V, 21465238 V, 21580968 V, 21580972 V, 22429963 V, 22440437 V, 22809232 V, 23417523...



CILINDRO ATUADOR ELETR. FH/FM/VM
CILINDRO ATUADOR ELETR. FH/FM/VM
CLUTCH RELEASE ELECTRONIC FH/FM/VM

DIVERSOS: - | VOLVO: B11R, B12B, B12M, B12R, B13R, B9R, FH, FM, VM

DIVERSOS: 0032509715

NTI: 028138 | MERCEDES: 0032501015, 0032502115, 0032503515, 0032507015, 0032508615, 0032509715, 510036410, A0032501015, A...



CILINDRO ATUADOR ELETR. MBB
 CILINDRO ATUADOR ELETR. MBB
 CLUTCH RELEASE BEARING ELECTRONIC
 FOR M.BENZ

DIVERSOS: - | MERCEDES: ACTROS EVOLUTION

DIVERSOS: 21580956 V

NTI: 024333 | VOLVO: 20806451 V, 21320923 V, 21465235 V, 21580956 V, 21580977 V



CILINDRO ATUADOR FH/FM =CAMBIO
 AUTOMATICO=
 CILINDRO ATUADOR FH/FM =CAMBIO
 AUTOMATICO=
 RELEASE BEARING AUTOMATIC GEAR BOX
 FH/FM

DIVERSOS: - | VOLVO: B11R, B12B, B12M, B12R, B13R, B9R, FH12, FH13, FM12, FM13, VM

DIVERSOS: 0032508515

NTI: 028143 | MERCEDES: 0032508515, A0032508515



CILINDRO ATUADOR MBB
 CILINDRO ATUADOR MBB
 RELEASE BEARING MBB

DIVERSOS: - | MERCEDES: ACTROS, AROCS, ATEGO

DIVERSOS: A9452642127

NTI: 025273 | MERCEDES: 9452642127, A9452642127



CILINDRO COMANDO CX CAMBIO
 CILINDRO COMANDO CX CAMBIO
 GEARBOX CHANGING CYLINDER

DIVERSOS: - | MERCEDES: AXOR TODOS C/CAMBIO G210/211/240/260/280

DIVERSOS: 501211290

NTI: 027312 | DAF: 1389650, 1427141, 501211290 | NTI: 027313, 027314, 027315



CILINDRO COMANDO SHIFT
 CILINDRO COMANDO SHIFT
 GEARBOX CHANGING CYLINDER MAN

DAF: CF, XF | DIVERSOS: -

DIVERSOS: 446414

NTI: 003514



CILINDRO EMBREAGEM K112/3
 CILINDRO DE EMBRAQUE K 112/3
 CLUTCH CYLINDER K112/3

DIVERSOS: - | SCANIA: K112, K113



DIVERSOS: 1521976 V

NTI: 026322 | VOLVO: 1521587 V, 1521976 V



CILINDRO SPLIT CX.CAMBIO VT FH/FM/VM
CILINDRO SPLIT CX.CAMBIO VT FH/FM/VM
CYLINDER HOUSING FOR GEAR BOX VT FH/
FN/VN

DIVERSOS: - | VOLVO: FH12, FH16, FM12, FM9, VM

DIVERSOS: 2S2253853A

NTI: 017731 | VW: 2S2253853A



FREIO MOTOR =60MM= CONSTELLATION
FREIO MOTOR =60MM= CONSTELLATION
ENGINE BRAKE 60MM CONSTELLATION

DIVERSOS: - | VW: 13.180E CONSTELLATION, 15.180E CONSTELLATION

DIVERSOS: 2S2253853B

NTI: 013935 | VW: 2S2253853B, 2T2253853



FREIO MOTOR =80MM= CONSTELLATION
FRENO MOTOR
ENGINE BRAKE 80MM CONSTELLATION

DIVERSOS: - | VW: 17.180 CUMMINS EURO 3, 17.180 MWM EURO 3, 17.220, 17.220 CUMMINS EURO 3, 17.220 MWM EURO 3, 17.250E, 17.250E CONSTELLATION, 17.320E CONSTELLATION, 19.320E, 19.320E CONSTELLATION, 19.370, 19.370 CONSTELLATION, 23.220, 24.220 CUMMINS EURO 3, 24.220 MWM EURO 3, 24.250E, 24.250E CONSTELLATION, 24.320E CONSTELLATION, 25.320, 25.320 CONSTELLATION, 25.370E, 25.370E CONSTELLATION, 26.220, 26.260, 26.260 CONSTELLATION, 31.260, 31.260 CONSTELLATION, 31.320E, 31.320E CONSTELLATION, 31.370E, 31.370E CONSTELLATION

DIVERSOS: 21284852 V

NTI: 018151 | VOLVO: 20843686 V, 20843687 V, 21284852 V



FREIO MOTOR 85MM =3-3/8 VM17/23
FREIO MOTOR 85MM =3-3/8 VM17/23
ENGINE BRAKE 85MM =3-3/8 VOLVO VM17
VM23

DIVERSOS: - | VOLVO: VM17, VM23

DIVERSOS: 1669422 V

NTI: 024281 | VOLVO: 1669422 V



TAMPA CILINDRO TRANSF. CAMBIO FH12
TAMPA CILINDRO TRANSF. CAMBIO FH12
TRANSFER CYLINDER COVER, FOR
GEARBOX FH12

DIVERSOS: - | VOLVO: FH12, FL10, FL7

DIVERSOS: 1340404

NTI: 014256 | SCANIA: 1332131, 1340404



EIXO CANECA TRANSF. CX. CAMBIO S.4
EJE CAJA DE CAMBIO
GEARBOX HOUSING AXLE

DIVERSOS: - | SCANIA: 114, 124, 164, 94, K113, K124, K94, P.G.R., P93, R113, R143, T113

DIVERSOS: 1725887 NTI: 027220 | SCANIA: 1725887



GAXETA DA CARCACA DE MUDANCA
GAXETA DA CARCACA DE MUDANCA
GEAR BOX OIL SEAL EURO 5/6



CIL. CAMBIO OPTCRUISE P.G.R.
CIL. CAMBIO OPTCRUISE P.G.R.
GEAR BOX CYLINDER REP. KIT P.G.R.

DIVERSOS: - | SCANIA: F/K/N ONIBUS, P.G.R., P.G.R.S.

DIVERSOS: 2RP141147A NTI: 005056 | VW: 2RP141147A



HASTE ACION. CIL. EMBREAGEM
ASTA ACIONAMENTO CILINDRO EMBRAGUE
ROD CLUTCH CYLINDER



CIL. MESTRE EMBREAGEM DIAM. 22,22MM
CILINDRO MESTRE DE EMBRAGUE
CLUTCH MASTER CYLINDER

DIVERSOS: - | VW: 12.140H, 12.140T, 12.170BT, 12.180, 14.150, 14.170BT, 14.180, 14.200, 14.220, 15.180EOD, 15.190EOD, 16.170, 16.180CO, 16.200, 16.210, 16.210CO, 16.220, 16.220 LEITO, 16.300, 17.210OD, 17.220, 17.240OT, 17.260EOT, 17.300, 17.310, 18.310OT, 18.320EOT, 23.310, 24.220, 24.250, 26.220, 26.260, 26.300, 31.260, 35.300, 35.300 LEITO, 35.300H, 40.300, 40.300 LEITO, 7.100, 7.110S, 7.90S, 8.100, 8.140, 8.140CE, 8.140CKD, 8.140CO, 9.150OD, L.80

DIVERSOS: 1523635 NTI: 010295 | SCANIA: 1390791, 1498124, 1523635



HASTE TUCHO TRAMB. CX. CAMBIO
OPTICRUISE S.4
ASTA
GEAR BOX ROD OPTICRUISE S.4



CILINDRO COMANDO CAMBIO
CILINDRO COMANDO CAMBIO
CILINDRO COMANDO CAMBIO

DIVERSOS: - | SCANIA: 114, 124, 164, 94, K114, K124, K94, P.G.R.

DIVERSOS: 244441 X NTI: 000983 | SCANIA: 1952214 X, 244441 X



REP. CANECA CAMBIO 110/1/2/3
KIT ACESS CAJA SELETORA
GEARBOX TRANSFER HOUSING REPAIR KIT
110/1/2/3



CANECA REDUZIDA 111/112
CILINDRO DEL CAMBIO 111/112
REDUCTION GEAR HOUSING 111/112

DIVERSOS: - | SCANIA: 110, 111, LK140, LK141, R112, R113, R142, R143, T112, T113, T142

DIVERSOS: 1952214 NTI: 003486 | SCANIA: 1952214



REP. CANECA CAMBIO 111/2/3
REPARO CANECA CAMBIO 111/112
GEARBOX TRANSFER HOUSING REPAIR KIT
111/2/3



CANECA REDUZIDA 111/112
CILINDRO DEL CAMBIO 111/112
REDUCTION GEAR HOUSING 111/112

DIVERSOS: - | SCANIA: 110, 111, LK140, LK141, R112, R113, R142, R143, T112, T113, T142

DIVERSOS: 1345149 X NTI: 011231 | SCANIA: 1334036 X, 1345149 X, 1903798 X



REP. CANECA REDUZ. 06 MARCHAS 113/S.4
REPARACION
REDUCTION GEAR HOUSING REPAIR KIT



CANECA REDUZIDA 06 MARCHAS 94/114/24/
64
VALVULA
REDUCTION GEAR HOUSING 890/900 94/114/
24/64

DIVERSOS: - | SCANIA: 114, 124, 164, 94, K113, K114, K124, K94, P.G.R., P93, R113, R143, T113



DIVERSOS: 1526817 VX

NTI: 007721 | VOLVO: 1526817 VX, 1527355 VX



REP. CANECA REDUZ. CX. CAMBIO 16S 130/
160/1650 ZF
ANILLA VEDACION
REDUCTION GEAR HOUSING REPAIR KIT



CANECA REDUZIDA NH/FH
CARCAZA REDUCIDA NH/FH
REDUCTION GEAR HOUSING NH/FH

DIVERSOS: - | VOLVO: EDC, FH, FH12, NH12, NL10, NL12

DIVERSOS: 3092575 V

NTI: 017474 | VOLVO: 3092575 V



REP. CANECA REDUZ. CX. CAMBIO FH12/16/
FM
REP. CANECA REDUZ. CX. CAMBIO FH12/16/
FM
REDUCTION GEARBOX HOUSING REPAIR KIT
FH



CANECA REDUZIDA NH/FH
CARCAZA REDUCIDA NH/FH
REDUCTION GEAR HOUSING NH/FH

DIVERSOS: - | VOLVO: EDC, FH12, FH16, FM12, NH12, NL10, NL12

DIVERSOS: 0069976447

NTI: 023186 | MERCEDES: 0069976447



REP. CANECA REDUZIDA MBB
REP. CANECA REDUZIDA MBB
REPAIR KIT FOR REDUCTION SPEED



CIL. REDUZIDA
CIL. REDUZIDA
SHIFT CYLINDER

DIVERSOS: - | MERCEDES: TODOS VEICULOS COM CAMBIO G210/G221/G240

DIVERSOS: 1321420 XV

NTI: 013647 | SCANIA: 1320420 XV, 1321420 XV, 1326847 XV, 1345151 XV, 1484808 XV, 1484809 XV, 1903797 XV, 1953495 XV



REP. CANECA TRANSF. 06/08 MARCHAS 113/
S.4 =VITON=
REPARACION
GEAR BOX TRANSFER HOUSING REPAIR KIT
113

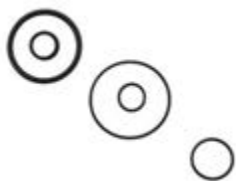


CANECA TRANSF. 06/08 MARCHAS 113/S4
CILINDRO
TRANSFER GEAR HOUSING

DIVERSOS: - | SCANIA: 114, 124, 164, 94, K113, K114, K124, K94, P.G.R., P93, R113, R143, T113

DIVERSOS: 1321420 X

NTI: 004241 | SCANIA: 1320420 X, 1321420 X, 1326847 X, 1345151 X, 1484808 X, 1484809 X, 1903797 X, 1953495 X



REP. CANECA TRANSF. 06/08 MARCHAS 113/
S4
REPARACION
GEARBOX TRANSFER HOUSING REPAIR KIT



CANECA TRANSF. 06/08 MARCHAS 113/S4
CILINDRO
TRANSFER GEAR HOUSING

DIVERSOS: - | SCANIA: 114, 124, 164, 94, K113, K114, K124, K94, P.G.R., P93, R113, R143, T113

DIVERSOS: 1527463 VX

NTI: 007724 | VOLVO: 1527363 VX, 1527463 VX



REP. CANECA TRANSF. CAMBIO 16S130/160/
1650 ZF
ANILLO CAMBIO
GEARBOX TRANSFER REPAIR KIT



CANECA TRANSF. N/NL10/12/EDC
CARCAZA CILINDRO TRANSFERENCIA
TRANSFER GEAR BOX HOUSING N/NL10/12/
EDC

DIVERSOS: - | VOLVO: EDC, FH12, FM12, NH12, NL10, NL12

DIVERSOS: 002670197 | NTI: 023183 | MERCEDES: 002670197



REP. CANECA TRANSF. CAMBIO MBB
 REP. CANECA TRANSF. CAMBIO MBB
 GEARBOX REDUCTION HOUSING REPAIR KIT



CANECA TRANSFERENCIA
 CANECA TRANSFERENCIA
 TRANSMISSION COVER

DIVERSOS: - | MERCEDES: TODOS VEICULOS COM CAMBIO G210/G221/G240

DIVERSOS: 0750112253 | NTI: 016387 | NTI: 022849 | ZF: 0750112253



REP. CANECA TRANSF. CAMBIO ZF
 KIT REPARACION CARCAZA CILINDRO DE
 TRANSF.
 GEAR BOX TRANSFER HOUSING REPAIR KIT

DIVERSOS: - | IVECO: EUROTECH, EUROTRAKKER, NOVO STRALIS, NOVO TRAKKER, STRALIS, TRAKKER

DIVERSOS: 3093230 V | NTI: 017478 | VOLVO: 1652751 V, 20365523 V, 276820 V, 3092050 V, 3093230 V



REP. CANECA TRANSF. CX. CAMBIO VT
 REP. CANECA TRANSF. CX. CAMBIO VT
 GEARBOX TRANSFER HOUSING REPAIR KIT



CANECA TRANSFERENCIA FH/NH
 CANECA TRANSFERENCIA FH/NH
 TRANSFER GEAR BOX HOUSING

DIVERSOS: - | VOLVO: B10B, B10R, B12, B12B, B12M, B7R, B9R, F10, F12, FH, FH12, FH12J, FH16, FL10, FL12, FL6, FL616, FL619, FL7, FM, FM12, FM9, FS7, N10, NH12, NL10, NL10 AUS., NL12, NL12 AUS., VM

DIVERSOS: 0002670197 | NTI: 023829 | MERCEDES: 0002670197



REP. CANECA TRANSF. MBB
 REP. CANECA TRANSF. MBB
 GEARBOX HOUSING REPAIR KIT MBB



CANECA TRANSFERENCIA
 CANECA TRANSFERENCIA
 TRANSMISSION COVER

DIVERSOS: - | MERCEDES: TODOS VEICULOS COM CAMBIO G210/G221/G240

DIVERSOS: 1769778 R | NTI: 024230 | SCANIA: 1769778 R, 2090529 R, 2181643 R



REP. CANECA TRANSF. OPTICRUISE
 REP. CANECA TRANSF. OPTICRUISE
 GEAR BOX REPAIR KIT OPTICRUISE



CIL. TRANSF. OPTICRUISE (MODELO NOVO)
 CIL. TRANSF. OPTICRUISE (MODELO NOVO)
 CIL. TRANSF. OPTICRUISE (MODELO NOVO)

DIVERSOS: - | SCANIA: F/K/N ONIBUS, P.G.R.

DIVERSOS: 1764085 | NTI: 010204 | SCANIA: 1764085



REP. CIL. ACION. EMBRAGEM =ESCRAVO= 114
 KIT REPARACION CILINDRO SERVO EMBRAGUE 114
 SLAVE CLUTCH CYLINDER REPAIR KIT



CIL. EMBR. S.4 =CX.GR801/GRS890/GRS900/920=
 CILINDRO ACION. EMBRAGUE - SERIE 4
 CLUTCH CYLINDER S4

DIVERSOS: - | SCANIA: 114, 124, 164, 94, K114, K124, K94, P.G.R.



DIVERSOS: 1764082

NTI: 014715 | SCANIA: 1764082



REP. CIL. ACION. EMBREAGEM S.4
 REP. CIL. ACIONAM. EMBRAGUE
 CLUTCH ACTUATOR CYLINDER REPAIR KIT
 S.4



CIL. EMBR. S.4 =CX.GR801/GRS890/GRS900/
 920=
 CILINDRO ACION. EMBRAGUE - SERIE 4
 CLUTCH CYLINDER S4

DIVERSOS: - | SCANIA: 114, 124, 164, 94, K114, K124, K94, P.G.R.

DIVERSOS: 41211007

NTI: 016426 | IVECO: 41211007



REP. CIL. ACION. EMBREAGEM STRALIS/HD/
 NR
 REP. CIL. ACION. EMBREAGEM STRALIS/HD/
 NR
 CLUTCH CYLINDER REPAIR KIT



CIL. EMBR. C/ RESERV. E SENSOR STRALIS/
 TRAKKE/TECH
 CIL. EMBR. C/ RESERV. E SENSOR STRALIS/
 TRAKKE/TECH
 CLUTCH CYLINDER W/ RESERVOIR AND
 SENSOR

DIVERSOS: - | IVECO: EUROCARGO, EUROTECH, EUROTRAKKER, NOVO STRALIS, NOVO TRAKKER, STRALIS, TRAKKER

DIVERSOS: 1342106

NTI: 016163 | SCANIA: 1342106, 550550



REP. CIL. ACUMULADOR RETARDER
 REP. CIL. ACUMULADOR RETARDER
 CYLINDER ACCUMULATOR W/ RETARDER
 REPAIR KIT



ACUMULADOR OLEO S.4
 ACUMULADOR OLEO S.4
 OIL SEALMULATOR

DIVERSOS: - | SCANIA: 114, 124, 164, 94, K114, K124, K94

DIVERSOS: 1369053

NTI: 013003 | SCANIA: 1369053



REP. CIL. BASCULAR CABINE S.4
 KIT REPARO CIL. LEVANTE CABINA
 CABIN CYLINDER REPAIR KIT



CILINDRO HIDR. BASCUL. CAB. CR (TETO
 ALTO) P.G.R.T
 CILINDRO HIDR. BASCUL. CAB. CR (TETO
 ALTO) P.G.R.T
 CABIN TILT CYLINDER P.G.R.T

DIVERSOS: - | SCANIA: 114, 124, 164, 94, P.G.R.

DIVERSOS: 1433655

NTI: 012508 | SCANIA: 1433655, 1541982



REP. CIL. BASCULAR CABINE S.4
 KIT REPARO CIL. LEVANTE CABINA
 CABIN CYLINDER REPAIR KIT



CILINDRO HIDR. BASCUL. CAB. CR (TETO
 ALTO) P.G.R.T
 CILINDRO HIDR. BASCUL. CAB. CR (TETO
 ALTO) P.G.R.T
 CABIN TILT CYLINDER P.G.R.T

DIVERSOS: - | SCANIA: 114, 124, 164, 94, P.G.R.

DIVERSOS: 1881850

NTI: 020391 | SCANIA: 1846430, 1881850



REP. CIL. CURSO LONGITUDINAL S.4
 REP. CIL. CURSO LONGITUDINAL S.4
 BRAKE CYLINDER REPAIR KIT S4



CILINDRO COMANDO CAMBIO
 CILINDRO COMANDO CAMBIO
 CILINDRO COMANDO CAMBIO

DIVERSOS: - | SCANIA: 114, 124, 164, 94, K114, K124, K94, P.G.R.



DIVERSOS: 273660 V

NTI: 002531 | VOLVO: 273660 V, 8127721 V



REP. CIL. EMBREAGEM
KIT CILINDRO EMBRAGUE
CLUTCH CYLINDER REPAIR KIT



CIL. MESTRE EMBREAGEM/NL10/12 B10M/12/58
CILINDRO DE EMBRAGUE
CLUTCH MASTER CYLINDER N/NL10/12 B10M/12/58

DIVERSOS: - | VOLVO: B10, B10M, B58, N10, N12, NL10, NL12

DIVERSOS: 550464

NTI: 003499 | NTI: 003267 | SCANIA: 550464



REP. CIL. EMBREAGEM 112HW/113
REPARO CIL. EMBRAGUE 112HW/113
CLUTCH CYLINDER REPAIR KIT 112HW/113



CIL. MESTRE EMBREAGEM 113 =ALUMINIO=
CILINDRO EMBRAGUE 113
CLUTCH MASTER CYLINDER 113 ALUMINUM

DIVERSOS: - | SCANIA: F113, P93, R113, R143, T113

DIVERSOS: 3094730 V

NTI: 018964 | VOLVO: 276833 V, 3094523 V, 3094730 V



REP. CIL. EMBREAGEM FH12/NH/12
KIT CILINDRO EMBRAGUE
CLUTCH CYLINDER REPAIR KIT



CIL. MESTRE EMBREAGEM FH /NH12/B12R
CILINDRO EMBRAGUE FH
CLUTCH MASTER CYLINDER FH/NH/FM

DIVERSOS: - | VOLVO: B12M, B7R, FH12, FM12, FM7, NH12

DIVERSOS: 1927829 XA

NTI: 026205 | SCANIA: 1927829 XA



REP. CIL. MASTER EMB. P.G.R.T (PISTAO ALUMINIO)
REP. CIL. MASTER EMB. P.G.R.T (PISTAO ALUMINIO)
CLUTCH MASTER CYLINDER P.G.R.T.



CIL. MASTER EMBREAGEM P.G.R.T
CIL. MASTER EMBREAGEM P.G.R.T
CLUTCH MASTER CYLINDER P.G.R.T.

DIVERSOS: - | SCANIA: PGR-OPTICRUISE C/PED

DIVERSOS: 1927829 X

NTI: 019271 | SCANIA: 1927829 X



REP. CIL. MASTER EMBREAGEM P.G.R.T
REP. CIL. MASTER EMBREAGEM P.G.R.T
CLUTCH MASTER CYLINDER P.G.R.T.



CIL. MASTER EMBREAGEM P.G.R.T
CIL. MASTER EMBREAGEM P.G.R.T
CLUTCH MASTER CYLINDER P.G.R.T.

DIVERSOS: - | SCANIA: PGR-OPTICRUISE C/PED

DIVERSOS: 1405803 R

NTI: 025839 | SCANIA: 1405803 R



REPARO CILINDRO CAMBIO OPTCRUISE P.G.R.
REPARO CILINDRO CAMBIO OPTCRUISE P.G.R.
GEAR BOX CYLINDER REP. KIT P.G.R.



CIL. CAMBIO OPTCRUISE P.G.R.
CIL. CAMBIO OPTCRUISE P.G.R.
GEAR BOX CYLINDER REP. KIT P.G.R.

DIVERSOS: - | SCANIA: F/K/N ONIBUS, P.G.R., P.G.R.S.



DIVERSOS: 26000 NTI: 024435 | IVECO: 26000



SENSOR C/2 PLUGS P/CIL. DIAM. 31,75 (IVECO)
 SENSOR C/2 PLUGS P/CIL. DIAM. 31,75 (IVECO)
 FRONT CYLINDER REP. KIT W/ TWO CONNECTORS



CIL. EMBR. C/ RESERV. E SENSOR STRALIS/ TRAKKE/TECH
 CIL. EMBR. C/ RESERV. E SENSOR STRALIS/ TRAKKE/TECH
 CLUTCH CYLINDER W/ RESERVOIR AND SENSOR

DIVERSOS: - | IVECO: CURSOR, EUROCARGO, EUROTECH, EUROTRAKKER, NOVO STRALIS, NOVO TRAKKER, STRALIS, TRAKKER

DIVERSOS: 1321239 NTI: 009242 | SCANIA: 1321239



TAMPA CANECA REDUZ. 8 MARC. 93/113/43/S. 4
 PIEZA INTERMEDIA
 COVER REDUCTION GEAR BOX HOUSING 93/113/43/S



CANECA TRANSF. 06/08 MARCHAS 113/S4 CILINDRO
 TRANSFER GEAR HOUSING

DIVERSOS: - | SCANIA: 114, 124, 164, 94, K113, K114, K124, K94, P.G.R., P93, R113, R143, T113

DIVERSOS: 0002902112 X | NTI: 015254 | MERCEDES: 0002902112 X



REP. SERVO EMBR.(GRAU)
 REP. SERVO EMBR.(GRAU)
 CLUTCH SERVO REPAIR KIT



SERVO DE EMBREAGEM GRAU
 SERVO DE EMBREAGEM GRAU
 SERVO DE EMBREAGEM GRAU

DIVERSOS: - | MERCEDES: OF1318, OF1620, OH1318, OH1620, UNIMOG U 1850, UNIMOG U 1850L, UNIMOG U 2100, UNIMOG U 2100T, UNIMOG U 2150, UNIMOG U 2150L, UNIMOG U 2400, UNIMOG U 2400TG, UNIMOG U 2450, UNIMOG U 2450L

DIVERSOS: K628492AM I | NTI: 017175 | VOLVO: 1672129 VI, 20524584 VI, 8171720 VI, K628492AM VI



SERVO EMBR. =HASTE CURTA= FH/FM/NH12/
 VT2014
 SERVO EMBR. =HASTE CURTA= FH/FM/NH12/
 VT2014
 CLUTCH SERVO FH/FM/NH12/VT2 (SHORT
 ROD)

DIVERSOS: - | VOLVO: FH12, FH16, FM12, NH12, VM 310, VM 330

DIVERSOS: 8171721 VI | NTI: 017176 | VOLVO: 20524585 VI, 22317371 VI, 3192126 VI, 8171721 VI



SERVO EMBR. =HASTE LONGA= NH/FM/FH12
 SERVO EMBR. =HASTE LONGA= NH/FM/FH12
 CLUTCH SERVO NH/FN/FH12 (LONG ROD)

DIVERSOS: - | VOLVO: B12B, B12M, FH IMPORTADO, FH12, FH16, FM10, FM12, FM7, FM9, NH12

DIVERSOS: 360717 | NTI: 001611 | SCANIA: 10575182, 10575185, 1747894, 298953, 338923, 345159, 360717, 360719



SERVO EMBR. 100MM 112
 SERVO DE EMBRAGUE 112
 CLUTCH SERVO 100MM 112

DIVERSOS: - | SCANIA: F112, K112, R112, R142, T112, T142

DIVERSOS: 371612 I | NTI: 016126 | SCANIA: 1331770 I, 1747895 I, 371612 I, 374116 I



SERVO EMBR. 110MM 112/3
 SERVO DE EMBRAGUE
 CLUTCH SERVO 110M 112/3

DIVERSOS: - | SCANIA: F112, F113, K112, K113, L113, P93, R112, R113, R142, R143, T112, T113, T142

DIVERSOS: 628277AM | NTI: 026022 | KONGSBERG: 628277AM | NTI: 026401



SERVO EMBR. 80MM DAF/RENAULT
 SERVO EMBR. 80MM DAF/RENAULT
 CLUTCH SERVO DAF/IVECO/RENAULT

DAF: CF75 | DAF: CF75 | DIVERSOS: -



DIVERSOS: 5801784907

NTI: 021653 | IVECO: 5801784907, 5949890257 | NTI: 021654



SERVO EMBR. 80MM VERTIS
SERVO DE EMBRAGUE 80MM VERTIS
CLUTCH SERVO 80MM VERTIS

DIVERSOS: - | IVECO: 130V18 VERTIS CAMINHAO 4X2, 130V19 VERTIS CAMINHAO ECOLINE 4X2, 90V16 VERTIS CAMINHAO 4X2, 90V18 VERTIS CAMINHAO 4X2

DIVERSOS: 1671953 VI

NTI: 016822 | NTI: 027281 | VOLVO: 1521371 VI, 1655435 VI, 1668501 VI, 1671953 VI, 85003219 VI



SERVO EMBR. B7R/B10R/B10M/EDC =
INJETADO=
SERVO EMBRAGUE B-10R
CLUTCH SERVO B7R/B10R/B10M/EDC 95MM

DIVERSOS: - | VOLVO: FH IMPORTADO, VM 270

DIVERSOS: 371612 B

NTI: 016462 | SCANIA: 1331770 B, 1747895 B, 371612 B, 374116 B



SERVO EMBR. C/ COTOV. 45 - 110MM 112/3
SERVO EMBRAGUE 112/113
CLUTCH SERVO 110MM (ELBOW 45\$)

DIVERSOS: - | SCANIA: F112, F113, K112, K113, L113, P93, R112, R113, R142, R143, T112, T113, T142

DIVERSOS: 9700511640

NTI: 014576 | MERCEDES: 0002951318, 9700511640



SERVO EMBR. CARCACA LONGA TP WABCO
SERVO EMBRAGUE
CLUTCH SERVO LONG HOUSING WABCO

DIVERSOS: - | MERCEDES: L2638, LK2638, LS1938, LS2638, O371 RS, O371 RSD, O371 SRE, O400, O400 RS, O400 RSD, O400 RSE, O400 RSL, O400 UP, OH1625 L, OH1628 L, OH1635 L

DIVERSOS: 629300AM

NTI: 026021 | KONGSBERG: 629300AM | NTI: 026708



SERVO EMBR. DAF
SERVO EMBR. DAF
CLUTCH SERVO DAF

DIVERSOS: - | RENAULT: KERAX, MAGNUM, MAXTER, PREMIUM

DIVERSOS: 1069205 VI

NTI: 016820 | VOLVO: 1069205 VI



SERVO EMBR. FH12 (P/VEIC. IMP.) =
INJETADO=
SERVO EMBRAGUE FH12
CLUTCH SERVO FH 12

DIVERSOS: - | VOLVO: FH12, FM10, FM12, NH12, NL10, NL12

DIVERSOS: 1421186 I

NTI: 018469 | SCANIA: 1367453, 1421186, 1454590, 1469161, 1513717



SERVO EMBR. INJETADO 114
SERVO EMBRAGUE 114
CLUTCH SERVO 114

DIVERSOS: - | SCANIA: 114, 124, 164, 94, F94, K114, K124, K94, P.G.R.

DIVERSOS: 9700512270

NTI: 015449 | NTI: 017158 | WABCO: 9700512270, 9700512310



SERVO EMBR. IVECO N. STRALIS 410/460 =
HASTE CURTA=
SERVO EMBRAGUE IVECO NUEVO STRALIS
CLUTCH SERVO IVECO STRALIS 410/460

DIVERSOS: - | IVECO: -, NOVO STRALIS

DIVERSOS: 6310361AM

NTI: 026025 | KONGSBERG: 630361AM, 6310361AM



SERVO EMBR. MAN TGA/DAF
SERVO EMBR. MAN TGA/DAF
CLUTCH SERVO MAN TGA/DAF

DIVERSOS: - | MAN: TGA

DIVERSOS: 1655639 V

NTI: 003254 | VOLVO: 1526523 V, 1655639 V, 1673067 V, 267321 V, 267532 V, 8112202 V



SERVO EMBR. N/NL-10/12/B10/58 =80MM
INTERNO=
SERVO EMBRAGUE
CLUTCH SERVO N/NL10/12/B10/58 80MM

DIVERSOS: - | VOLVO: B10M, B58E, N10, N12, NL10, NL12

DIVERSOS: 1493461

NTI: 018855 | NTI: 022561 | SCANIA: 1493461, 1523399, 1784480, 1927825, 2555088



SERVO EMBR. P.G.R.T
SERVO DE EMBRAGUE P.G.R.T
CLUTCH SERVO P.G.R.T.

DIVERSOS: - | SCANIA: PGR-OPTICRUISE C/PED

DIVERSOS: 9700512320

NTI: 017830 | IVECO: 5801613805, 9700512320



SERVO EMBR. TRAKKER =HASTE LONGA=
SERVO EMBR. TRAKKER =HASTE LONGA=
CLUTCH SERVO TRAKKER (SHORT ROD)

DIVERSOS: - | IVECO: NOVO TRAKKER



DIVERSOS: 42568691

NTI: 024573 | IVECO: 42560762, 42561466, 42568691, 42569800 | NTI: 024720, 024880, 027282, 027319, 027320



SERVO EMBREAGEM -STRALIS=
SERVO EMBREAGEM -STRALIS=
CLUTCH SERVO IVECO STRALIS

DIVERSOS: - | IVECO: NOVO STRALIS, NOVO TRAKKER | MAN: TGA, TGM

DIVERSOS: 2023059

NTI: 025401 | SCANIA: 10572941, 10572946, 10572951, 10574929, 10574930, 10574936, 1849429, 1931444, 2023059, 2037304, 2082082...



SERVO EMBREAGEM ECA
SERVO EMBREAGEM ECA
SERVO EMBREAGEM ECA

DIVERSOS: - | SCANIA: C/K (20/...), F/K/N ONIBUS, L.P.G.R.S., P.G.R.

DIVERSOS: 85002040 V

NTI: 024760 | NTI: 026024 | VOLVO: 22085052 V, 22085058 V, 23105448 V, 23105541 V, 85002040 V, 85008040 V



SERVO EMBREAGEM FH/FM
SERVO EMBREAGEM FH/FM
CLUTCH SERVO VOLVO FH/FM

DIVERSOS: - | VOLVO: FH, FM

DIVERSOS: 2T2721261E

NTI: 027234 | MAN: 2T2721261E | NTI: 027238



SERVO EMBREAGEM MAN
SERVO EMBREAGEM MAN
CLUTCH SERVO MAN

DIVERSOS: - | MAN: 13.190 WORKER EURO V, 15.190 WORKER EURO V, 17.190 WORKER EURO V, 17.230 WORKER EURO V, 17.330 ADVANTECH, 19.330T ADVANTECH, 23.230 WORKER EURO V, 24.330 ADVANTECH, 25.330T ADVANTECH, 26.330T ADVANTECH, 26.360T ADVANTECH, 26.390T ADVANTECH, 26.420T ADVANTECH, 31.330 ADVANTECH, 31.390 ADVANTECH

DIVERSOS: 9700516420

NTI: 025059 | NTI: 025060, 025882 | WABCO: 9700516420



SERVO EMBREAGEM MAN
SERVO EMBREAGEM MAN
CLUTCH SERVO MAN REP. KIT W/COVER

DIVERSOS: - | MAN: 10.160 ADVANTECH MAN, 10.160PLUS DELIVERY, 13.190 ADVANTECH MAN, 13.190 WORKER EURO V, 15.190 ADVANTECH MAN, 15.190 OD EURO 5 MAN, 15.190 WORKER EURO V, 17.190 ADVANTCH MAN, 17.190 WORKER EURO V, 17.230 ADVANTECH MAN, 17.230 WORKER EURO V, 17.280 ADVANTECH MAN, 23.230 WORKER EURO V, 23.330 ADVANTECH MAN, 24.280 ADVANTECH MAN, 26.280 ADVANTECH MAN, 31.280 ADVANTECH MAN, 5.150 ADVANTECH MAN, 5.150 OD, 8.160 ADVANTECH MAN, 8.160 DELIVERY, 8.160 OD, 9.160 ADVANTECH MAN, 9.160 DELIVERY, 9.160 OD

DIVERSOS: 5801317166 | NTI: 023897 | IVECO: 504143812, 5801317166, 5801574722



SERVO MID EMBREAGEM TECTOR (6X2)
SERVO MID EMBREAGEM TECTOR (6X2)
CLUTCH SERVO MID TECTOR (6X2)

DIVERSOS: - | IVECO: EUROCARGO, TECTOR

DIVERSOS: 2023059 C | NTI: 027974 | SCANIA: 1931444 C, 2023059 C, 2037304 C, 2082082 C, 2131963 C, 2290706 C, 2392193 C, 2392281 C, 2441305 C, 24505...



CHICOTE SERVO EMBREAGEM ECA
CHICOTE SERVO EMBREAGEM ECA
CHICOTE SERVO EMBREAGEM ECA



SERVO EMBREAGEM ECA
SERVO EMBREAGEM ECA
SERVO EMBREAGEM ECA

DIVERSOS: - | SCANIA: C/K (20/...), F/K/N ONIBUS, L.P.G.R.S., P.G.R.

DIVERSOS: 1316051835 C | NTI: 024238 | ZF: 1316051835 C



CORPO PNEUM. SERVO SHIFT
CORPO PNEUM. SERVO SHIFT
CLUTCH SERVO SHIFT PNEUMATIC HOUSING



SERVO SHIFT ZF
SERVO SHIFT ZF
CLUTCH SERVO SHIFT ZF TYPE

DIVERSOS: - | IVECO: EUROTECH, EUROTAKKER, NOVO STRALIS, STRALIS, TRAKKER | VW: 19.320E CONSTELLATION, 19.370 CONSTELLATION, 25.320 CONSTELLATION, 25.370E CONSTELLATION, 26.260 CONSTELLATION, 31.260 CONSTELLATION, 31.320E CONSTELLATION, 31.370E CONSTELLATION

DIVERSOS: 23016 | NTI: 009999 | FREIOS: 23016



FLUIDO DE FREIO (DOT4) =500ML=
FLUIDO FRENO (DOT4) =500ML=
BRAKE FLUID (DOT4) =500ML=

DIVERSOS: - | FREIOS: TODOS OS VEICULOS

DIVERSOS: 23037 | NTI: 018664 | FREIOS: 23037



FLUIDO DE FREIO (DOT5.1) = 500ML =
FLUIDO FRENO (DOT4) =500ML=
BRAKE FLUID (DOT4) =500ML=

DIVERSOS: - | FREIOS: TODOS OS VEICULOS

DIVERSOS: 389894 | NTI: 002989 | SCANIA: 389894



HASTE SERVO EMBREAGEM 112HW/113
TIRANTE SERVO EMBRAGUE 112HW/113
ROD CLUTCH SERVO 112HW/113



SERVO EMBR. 110MM 112/3
SERVO DE EMBRAGUE
CLUTCH SERVO 110M 112/3

DIVERSOS: - | SCANIA: 112 HW, F112, F113, K112, K113, L113, P93, R112, R113, R142, R143, T112, T113, T142



DIVERSOS: 23814

NTI: 023814 | ZF: 23814

HASTE SERVO SHIFT (MAIOR)
HASTE SERVO SHIFT (MAIOR)
CLUTCH SERVO BIG SHAFT



SERVO SHIFT ZF
SERVO SHIFT ZF
CLUTCH SERVO SHIFT ZF TYPE

DIVERSOS: - | IVECO: EUROTECH, EUROTRAKKER, NOVO STRALIS, STRALIS, TRAKKER | MERCEDES: ATEGO1729HD, ATEGO1730S, ATEGO2426, ATEGO2430, ATEGO3030 | VW: 10.160 DELIVERY, 17.280, 19.320E CONSTELLATION, 19.370 CONSTELLATION, 24.280, 25.320 CONSTELLATION, 25.370E CONSTELLATION, 26.260 CONSTELLATION, 31.260 CONSTELLATION, 31.320E CONSTELLATION, 31.370E CONSTELLATION

DIVERSOS: 24872

NTI: 024872 | ZF: 24872

HASTE SERVO SHIFT (MENOR)
HASTE SERVO SHIFT (MENOR)
CLUTCH SERVO SHIFT SHAFT (SMAL) TYPE



SERVO SHIFT ZF
SERVO SHIFT ZF
CLUTCH SERVO SHIFT ZF TYPE

DIVERSOS: - | IVECO: STRALIS | MAN: TGX | RENAULT: PREMIUM | VW: 17.280, 19.330, 19.370, 24.280, 25.370, 31.330, 31.370E

DIVERSOS: 22809232 VR

NTI: 026334 | VOLVO: 22809232 VR



REP. ATUADOR EMB. I-SHIFT PARCIAL (S/
TRAVA)
REP. ATUADOR EMB. I-SHIFT PARCIAL (S/
TRAVA)
CLUTCH PARTIAL REP.KIT ACTUATOR I-
SHIFT W/O LOCKER



CILINDRO ATUADOR FH/FM =CAMBIO
AUTOMATICO=
CILINDRO ATUADOR FH/FM =CAMBIO
AUTOMATICO=
RELEASE BEARING AUTOMATIC GEAR BOX
FH/FM

DIVERSOS: - | VOLVO: B11R, B12B, B12M, B12R, B13R, B9R, FH12, FH13, FM12, FM13, VM

DIVERSOS: 550456

NTI: 001957 | SCANIA: 550456



REP. PARCIAL SERVO EMBR. 110MM
REPARO PARCIAL SERVO EMBRAGUE 110
MM
CLUTCH SERVO REPAIR KIT 110MM
(PARTIAL)



SERVO EMBR. 110MM 112/3
SERVO DE EMBRAGUE
CLUTCH SERVO 110M 112/3

DIVERSOS: - | SCANIA: 112 HW, F112, F113, K112, K113, L113, P93, R112, R113, R142, R143, T112, T113, T142

DIVERSOS: 2023059 X

NTI: 025066 | SCANIA: 2023059 X, 2392193 X, 2612292 X



REP. SERVO ECA
REP. SERVO ECA
CLUTCH SERVO REP. KIT ECA



SERVO EMBREAGEM ECA
SERVO EMBREAGEM ECA
SERVO EMBREAGEM ECA

DIVERSOS: - | SCANIA: C/K (20/...), F/K/N ONIBUS, L.P.G.R.S., P.G.R., P.G.R.S.

DIVERSOS: 550465

NTI: 006544 | SCANIA: 1336159, 550465



REP. SERVO EMBR. 110 MM =RABICO
COMPL.=
KIT REP. SERVO-EMBRAGUE T-113
CLUTCH SERVO REPAIR KIT 110MM



SERVO EMBR. 110MM 112/3
SERVO DE EMBRAGUE
CLUTCH SERVO 110M 112/3

DIVERSOS: - | SCANIA: F112, F113, K112, K113, L113, P93, R112, R113, R142, R143, T112, T113, T142

DIVERSOS: 550465 A | NTI: 024507 | SCANIA: 1336159 A, 550465 A



REP. SERVO EMBR. 110 MM =RABICO
COMPL.= C/PISTAO
KIT REP. SERVO-EMBRAGUE T-113
CLUTCH SERVO REPAIR KIT 110MM



SERVO EMBR. 110MM 112/3
SERVO DE EMBRAGUE
CLUTCH SERVO 110M 112/3

DIVERSOS: - | SCANIA: F112, F113, K112, K113, L113, P93, R112, R113, R142, R143, T112, T113, T142

DIVERSOS: 550465 P | NTI: 016634 | SCANIA: 550465 P



REP. SERVO EMBR. 110 MM =RABICO
PARCIAL=
KIT REP. SERVO-EMBRAGUE T-113
CLUTCH SERVO REPAIR KIT 110MM
(PARTIAL)



SERVO EMBR. 110MM 112/3
SERVO DE EMBRAGUE
CLUTCH SERVO 110M 112/3

DIVERSOS: - | SCANIA: F112, F113, K112, K113, L113, P93, R112, R113, R142, R143, T112, T113, T142

DIVERSOS: 1484715 | NTI: 006282 | SCANIA: 1484715



REP. SERVO EMBR. C/PISTAO =MOD.= 114/24
REPARO CIL. 1.421.186
CLUTCH SERVO REPAIR KIT (W/ PISTON) 114/
24



SERVO EMBR. INJETADO 114
SERVO EMBRAGUE 114
CLUTCH SERVO 114

DIVERSOS: - | SCANIA: 114, 124, 164, 94, F94, K114, K124, K94, P.G.R.

DIVERSOS: 1484715 E | NTI: 017278 | SCANIA: 1484715 E



REP. SERVO EMBR. C/PISTAO =MOD.= 114/24
ESPECIAL
REPARO CIL. 1.421.186
CLUTCH SERVO REPAIR KIT 114/24



SERVO EMBR. INJETADO 114
SERVO EMBRAGUE 114
CLUTCH SERVO 114

DIVERSOS: - | SCANIA: 114, 124, 164, 94, F94, K114, K124, K94, P.G.R.

DIVERSOS: 1484715 X | NTI: 018975 | SCANIA: 1484715 X



REP. SERVO EMBR. C/PISTAO =MOD.= 114/24
EXPORT
REPARO CIL. 1.421.186
CLUTCH SERVO REPAIR KIT W/ PISTON
(PARTIAL)



SERVO EMBR. INJETADO 114
SERVO EMBRAGUE 114
CLUTCH SERVO 114

DIVERSOS: - | SCANIA: 114, 124, 164, 94, F94, K114, K124, K94, P.G.R.

DIVERSOS: 1484715 P | NTI: 016635 | SCANIA: 1484715 P



REP. SERVO EMBR. C/PISTAO =MOD.= 114/24
PARCIAL
REPARO CIL. 1.421.186
CLUTCH SERVO REPAIR KIT W/ PISTON
(PARTIAL)



SERVO EMBR. INJETADO 114
SERVO EMBRAGUE 114
CLUTCH SERVO 114

DIVERSOS: - | SCANIA: 114, 124, 164, 94, F94, K114, K124, K94, P.G.R.



DIVERSOS: 1484715 PE

NTI: 018679 | SCANIA: 1484715 PE



REP. SERVO EMBR. C/PISTAO =MOD.= 114/24
PARCIAL
REPARO CIL. 1.421.186
CLUTCH SERVO REPAIR KIT W/ PISTON
(PARTIAL)



SERVO EMBR. INJETADO 114
SERVO EMBRAGUE 114
CLUTCH SERVO 114

DIVERSOS: - | SCANIA: 114, 124, 164, 94, F94, K114, K124, K94, P.G.R.

DIVERSOS: 1523399 R

NTI: 018168 | SCANIA: 1523399 R, 1784480 R, 1927825 R, 2555088 R



REP. SERVO EMBR. DIAM. 125MM =CAMBIO
OPTICRUISE=
REP. SERVO EMBR. DIAM. 125MM =CAMBIO
OPTICRUISE=
CLUTCH SERVO REPAIR KIT 125MM
OPTCRUISE GEARSHIFT



SERVO EMBR. P.G.R.T
SERVO DE EMBRAGUE P.G.R.T
CLUTCH SERVO P.G.R.T.

DIVERSOS: - | SCANIA: PGR-OPTICRUISE C/PED

DIVERSOS: 3094550 V

NTI: 006048 | VOLVO: 3093099 V, 3093100 V, 3094550 V



REP. SERVO EMBR. EDC/FH-12
REPARO SERVO EMBRAGUE
CLUTCH SERVO REPAIR KIT EDC/FH-12



SERVO EMBR. FH12 (P/VEIC. IMP.) =
INJETADO=
SERVO EMBRAGUE FH12
CLUTCH SERVO FH 12

DIVERSOS: - | VOLVO: FH12, FM10, FM12, NH12, NL10, NL12

DIVERSOS: 550453

NTI: 001955 | NTI: 001953 | SCANIA: 550453



REP. SERVO EMBR. 100MM
REPARO SERVO EMBRAGUE 100 MM
CLUTCH SERVO REPAIR KIT 100 MM



SERVO EMBR. 100MM 112
SERVO DE EMBRAGUE 112
CLUTCH SERVO 100MM 112

DIVERSOS: - | SCANIA: F112, K112, R112, R142, T112, T142

DIVERSOS: 550455

NTI: 001956 | SCANIA: 550455



REP. SERVO EMBR. 110MM
REPARO SERVO EMBRAGUE 110 MM
CLUTCH SERVO REPAIR KIT 110 MM



SERVO EMBR. 110MM 112/3
SERVO DE EMBRAGUE
CLUTCH SERVO 110MM 112/3

DIVERSOS: - | SCANIA: F112, F113, K112, K113, L113, P93, R112, R113, R142, R143, T112, T113, T142

DIVERSOS: 3093098 V

NTI: 014669 | VOLVO: 3093098 V



REP. SERVO EMBR. FH/NH/FM
REPARO SERVO EMBRAGUE
CLUTCH SERVO REPAIR KIT FH/NH/FM



SERVO EMBR. FH12 (P/VEIC. IMP.) =
INJETADO=
SERVO EMBRAGUE FH12
CLUTCH SERVO FH 12

DIVERSOS: - | VOLVO: FH12, FM10, FM12, NH12, NL10, NL12

DIVERSOS: 85102142 V | NTI: 009877 | VOLVO: 85102142 V



REP. SERVO EMBR.FH12
JG. REPARACION
CLUTCH SERVO REPAIR KIT FH12



SERVO EMBR. =HASTE CURTA= FH/FM/NH12/
VT2014
SERVO EMBR. =HASTE CURTA= FH/FM/NH12/
VT2014
CLUTCH SERVO FH/FM/NH12/VT2 (SHORT
ROD)

DIVERSOS: - | VOLVO: FH12, FH16, FM12, NH12, VM 310, VM 330

DIVERSOS: 85102142 VA | NTI: 012772 | VOLVO: 85102142 VA



REP. SERVO EMBR.FH12 C/PISTAO
KIT REPARACION SERVO EMBRAGUE
CLUTCH SERVO REPAIR KIT FH12 (W/
PISTON)



SERVO EMBR. =HASTE CURTA= FH/FM/NH12/
VT2014
SERVO EMBR. =HASTE CURTA= FH/FM/NH12/
VT2014
CLUTCH SERVO FH/FM/NH12/VT2 (SHORT
ROD)

DIVERSOS: - | VOLVO: FH12, FH16, FM12, NH12, VM 310, VM 330

DIVERSOS: 85102142 VP | NTI: 016633 | VOLVO: 85102142 VP



REP. SERVO EMBR.FH12 PARCIAL
JG. REPARACION
CLUTCH SERVO REPAIR KIT (PARTIAL)



SERVO EMBR. =HASTE CURTA= FH/FM/NH12/
VT2014
SERVO EMBR. =HASTE CURTA= FH/FM/NH12/
VT2014
CLUTCH SERVO FH/FM/NH12/VT2 (SHORT
ROD)

DIVERSOS: - | VOLVO: FH12, FH16, FM12, NH12, VM 310, VM 330

DIVERSOS: 950321027 | NTI: 017482 | HALDEX: 950321027



REP. SERVO EMBR.HALDEX
REP. SERVO EMBR.HALDEX
CLUTCH SERVO REPAIR KIT HALDEX



SERVO EMBREAGEM
SERVO EMBREAGEM
CLUTCH SERVO

DIVERSOS: - | MERCEDES: 1214C, 1218, 1317, 1318, 1414, 1517, 1518, 1614, 1618, 1714, 1718, 1933, 2318, 2418, 708, 812, 912, 917

DIVERSOS: 6025003031003 | NTI: 018680 | AGRALE: 6025003031003 R



REP. SERVO EMBR.KONSBERG AGRALE
REP. SERVO EMBR.KONSBERG AGRALE
CLUTCH SERVO REPAIR KIT KONGSBERG

AGRALE: 10.000 4.8H MWM EURO V COM ABS, 14000, 6500, 8700, 8700TR, MA 10.0 BL MWM 4,8H EURO V, MA 9.2 BL MWM 4,8H EURO V | DIVERSOS: - | IVECO: 130V18 VERTIS CAMINHAO 4X2, 130V19 VERTIS CAMINHAO ECOLINE 4X2, 90V16 VERTIS CAMINHAO 4X2, 90V18 VERTIS CAMINHAO 4X2, VERTIS

DIVERSOS: 271194 V | NTI: 003517 | VOLVO: 271194 V



REP. SERVO EMBR.NL10/NL12
KIT SERVO EMBRAGUE
CLUTCH SERVO REPAIR KIT N10



SERVO EMBR. N/NL-10/12/B10/58 =80MM
INTERNO=
SERVO EMBRAGUE
CLUTCH SERVO N/NL10/12/B10/58 80MM

DIVERSOS: - | VOLVO: B10M, B58E, N10, N12, NL10, NL12



DIVERSOS: 5949890257 R

NTI: 017979 | IVECO: 5949890257 R



REP. SERVO EMBR.VERTIS
 REP. SERVO EMBR.VERTIS
 CLUTCH SERVO REPAIR KIT VERTIS



SERVO EMBR. 80MM VERTIS
 SERVO DE EMBRAGUE 80MM VERTIS
 CLUTCH SERVO 80MM VERTIS

DIVERSOS: - | IVECO: VERTIS

DIVERSOS: 0501217253 X

NTI: 024785 | ZF: 0501217253 X



REP. SERVO SHIFT MERCEDES (COMPTO)
 REP. SERVO SHIFT MERCEDES (COMPTO)
 CLUTCH SERVO REP. KIT MERCEDES
 COMPLETE



SERVO SHIFT ZF
 SERVO SHIFT ZF
 CLUTCH SERVO SHIFT ZF TYPE

DIVERSOS: - | MAN: 10.160PLUS DELIVERY, 17.280, 24.280 | MERCEDES: ATEGO1729HD, ATEGO1730S, ATEGO2426, ATEGO2430, ATEGO3030

DIVERSOS: 0501216319 X

NTI: 025015 | ZF: 0501216319 X



REP.SERVO SHIFT O-500 MBB
 REP.SERVO SHIFT O-500 MBB
 SERVO REP. KIT SHIFT MBB O-500



SERVO SHIFT ZF
 SERVO SHIFT ZF
 CLUTCH SERVO SHIFT ZF TYPE

DIVERSOS: - | MERCEDES: ATEGO1730S, ATEGO2430, O500 TODOS | VW: 17.280

DIVERSOS: 9700516420 XA

NTI: 025434 | NTI: 026034 | WABCO: 9700516420 XA, 9700519702 XA



REPARO SERVO MAN =C/TAMPA=
 REPARO SERVO MAN =C/TAMPA=
 CLUTCH SERVO MAN W/COVER



SERVO EMBREAGEM MAN
 SERVO EMBREAGEM MAN
 CLUTCH SERVO MAN REP. KIT W/COVER

DIVERSOS: - | MAN: 10.160 ADVANTECH MAN, 10.160PLUS DELIVERY, 13.190 ADVANTECH MAN, 13.190 WORKER EURO V, 15.190 ADVANTECH MAN, 15.190 OD EURO 5 MAN, 15.190 WORKER EURO V, 17.190 ADVANTCH MAN, 17.190 WORKER EURO V, 17.230 ADVANTECH MAN, 17.230 WORKER EURO V, 17.280 ADVANTECH MAN, 23.230 WORKER EURO V, 23.330 ADVANTECH MAN, 24.280 ADVANTECH MAN, 26.280 ADVANTECH MAN, 31.280 ADVANTECH MAN, 5.150 ADVANTECH MAN, 5.150 OD, 8.160 ADVANTECH MAN, 8.160 DELIVERY, 8.160 OD, 9.160 ADVANTECH MAN, 9.160 DELIVERY, 9.160 OD

DIVERSOS: 0501211805

NTI: 024189 | ZF: 0501211805



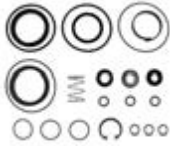
REPARO SERVO SHIFT COMPLETO
 REPARO SERVO SHIFT COMPLETO
 CLUTCH SERVO SHIFT REPAIR KIT



SERVO SHIFT ZF
 SERVO SHIFT ZF
 CLUTCH SERVO SHIFT ZF TYPE

DIVERSOS: - | IVECO: EUROTECH, EUROTRAKKER, NOVO STRALIS, NOVO TRAKKER, STRALIS, TRAKKER | VW: 19.320E CONSTELLATION, 19.370 CONSTELLATION, 25.320 CONSTELLATION, 25.370E CONSTELLATION, 26.260 CONSTELLATION, 31.260 CONSTELLATION, 31.320E CONSTELLATION, 31.370E CONSTELLATION

DIVERSOS: 0501211805 P NTI: 024479 | ZF: 0501211805 P



REPARO SERVO SHIFT PARCIAL
REPARO SERVO SHIFT PARCIAL
CLUTCH SERVO SHIFT PARTIAL R. KIT



SERVO SHIFT ZF
SERVO SHIFT ZF
CLUTCH SERVO SHIFT ZF TYPE

DIVERSOS: - | IVECO: EUROTECH, EUROTRAKKER, NOVO STRALIS, STRALIS, TRAKKER | VW: 19.320E CONSTELLATION, 19.370 CONSTELLATION, 25.320 CONSTELLATION, 25.370E CONSTELLATION, 26.260 CONSTELLATION, 31.260 CONSTELLATION, 31.320E CONSTELLATION, 31.370E CONSTELLATION

DIVERSOS: 2825405 NTI: 027971 | SCANIA: 1878943, 2340075, 2825405



RESERVATORIO SERVO ECA
RESERVATORIO SERVO ECA
CLUTCH SERVO ECA RESERVOIR



SERVO EMBREAGEM ECA
SERVO EMBREAGEM ECA
SERVO EMBREAGEM ECA

DIVERSOS: - | SCANIA: C/K (20/...), F/K/N ONIBUS, L.P.G.R.S., P.G.R.

DIVERSOS: 9700510010 NTI: 019441 | NTI: 022551 | WABCO: 9700510010, 9701500010



SERVO EMBR. MOD. ELETRONICO ACTROS/
AXOR
SERVO DE EMBRAGUE =ACTROS=
CLUTCH SERVO =ACTROS=

DIVERSOS: - | MERCEDES: ACTROS 2546, ACTROS 2646, ACTROS 2655, ACTROS 4844, ACTROS TODOS COM CAMBIO AUTOMATICO, ATEGO TODOS COM CAMBIO AUTOMATICO, ATRON TODOS COM CAMBIO AUTOMATICO, AXOR TODOS COM CAMBIO AUTOMATICO



CONTATOS / CONTACTS

Vendas / Sales: vendas@ntifreios.com.br
Geral / General: cipec@cipec.com.br
Televendas / Telesales: +55 19 3834.9822
Fax Gratuito / Fax Free: 0800.707.9822
www.ntifreios.com.br



AGRALE

Conversões	N° NTI	Pág.
6025003031003 R	018680	49

DAF

Conversões	N° NTI	Pág.
1389650	027312	33
1427141	027312	33
2046284	028140	32
2323315	028140	32
24055101	028140	32
501211290	027312	33

DIVERSOS

Conversões	N° NTI	Pág.
	003514	33

FORD

Conversões	N° NTI	Pág.
BC457A508BB	024838	28

FREIOS

Conversões	N° NTI	Pág.
23016	009999	45
23037	018664	45

HALDEX

Conversões	N° NTI	Pág.
950321027	017482	49

IVECO

Conversões	N° NTI	Pág.
26000	024435	40
41035502	017157	17
41035647	017157	17
41035649	017157	17
41211005	017550	28
41211007	016426	38
41211007 C	018092	28
41285167	024217	27
41285278	024217	27
41285311 C	018092	28
41285355	017550	28
42534474	026416	26
42536490	024690	19
42536490 R	023058	21
42557497	026416	26
42560762	024573	17
42561466	024573	17
42568691	024573	17
42569800	024573	17
43234474	026416	26
4854828	025927	29
504143812	023897	45
5801317166	023897	45
5801574722	023897	45
5801613805	017830	43
5801784907	021653	42
5802192366	017157	17
5949890257	021653	42
5949890257 R	017979	50
9700512320	017830	43
98420498	017157	17

IVECO

Conversões	N° NTI	Pág.
98438178	017157	17

KNORR

Conversões	N° NTI	Pág.
75914710	019224	22
9481083004	004135	21
9481083004 P	009939	21
983455860343	007433	21
II35696008	014716	19
II35696008 A	015873	19
II35696008 AP	027211	19
II35696008 P	027210	19
K002173	023733	17
K004297 C	016533	18
K0107167	027972	17
K0112700061	018826	16
K0112700062	018243	16
K0124040061	012370	20
K0124040061 P	016350	20
K0124040062	021935	20
K013727	024551	18
K013727 P	024643	18
K015222 R	017923	20
K021874	022595	18
K021874N00	022595	18
K032123	027944	15
K033409	018730	15
K033411	019631	15
K036633	018069	18
K043961	019620	15
SM1A05021	016407	20
SM1PLA	022595	18
VG3286	023733	17

KONGSBERG

Conversões	N° NTI	Pág.
628277AM	026022	41
629300AM	026021	42
630361AM	026025	43
6310361AM	026025	43

MAN

Conversões	N° NTI	Pág.
2T2721261E	027234	6
81307156152	025297	27

MANN

Conversões	N° NTI	Pág.
81307156149	019618	30
81307156154	019618	30
81307156156	019618	30

MERCEDES

Conversões	N° NTI	Pág.
0000721512	009598	32
0002670197	023829	37
0002902112 X	015254	41
0002951318	014576	42
0012955906	012523	32
0012959106	017902	30
0022950206	017551	30
0022950806	017903	31

MERCEDES

Conversões	N° NTI	Pág.
0022951607	024356	15
0022952507	025928	29
0022959106	017902	30
002670197	023183	37
0032501015	028138	33
0032502115	028138	33
0032503515	028138	33
0032507015	028138	33
0032508515	028143	33
0032508615	028138	33
0032509715	028138	33
0069976447	023186	36
0085860342	012981	21
3842950006	018810	32
3842957006	012516	31
3862957007	012524	31
3882957006	012525	31
510036410	028138	33
9452642127	025273	33
9700511640	014576	42
9792950006	024835	28
9792950006A	024835	28
9792950106	024836	29
A0022952507	025928	29
A0032501015	028138	33
A0032502115	028138	33
A0032503515	028138	33
A0032507015	028138	33
A0032508515	028143	33
A0032508615	028138	33
A0032509715	028138	33
A3842950006	018810	32
A9452642127	025273	33
LUK510036410	028138	33

NTI

Conversões	N° NTI	Pág.
001953	001955	48
003027	004109	13
003267	003499	39
003516	001730	15
004111	004109	13
006290	004109	13
006450	004110	12
012327	012370	20
013190	013189	5
013191	013189	5
013192	013189	5
017158	015449	6
017901	017900	4
018148	005084	4
018149	007404	4
018265	007404	4
018675	023811	11
018861	018730	15
019621	019620	15
021621	018243	16
021629	004560	23
021654	021653	42
021845	005081	3
021851	005095	27
021854	007404	4
021857	005094	3
022059	004109	13
022255	019631	15

NTI

Conversões	N° NTI	Pág.
022536	017565	5
022551	019441	14
022559	018069	18
022561	018855	43
022563	017157	17
022579	021935	20
022585	001730	15
022608	001887	24
022617	004109	13
022625	004560	23
022630	005081	3
022631	005084	4
022634	005094	3
022636	005097	3
022662	005097	3
022670	007438	25
022671	007438	25
022672	007438	25
022690	006456	7
022692	007776	11
022693	007179	10
022694	007424	12
022695	007423	13
022708	001921	24
022711	007187	12
022715	007415	9
022726	007461	11
022744	019224	22
022775	019223	23
022787	006051	25
022788	006051	25
022789	006051	25
022790	006051	25
022797	006456	7
022846	015165	24
022847	015166	24
022848	003513	24
022849	016387	37
022857	019385	5
022858	014801	6
022859	014801	6
022870	017565	5
022910	023811	11
022911	019350	11
022912	018824	14
022913	016407	20
022920	016350	20
022953	006457	7
022954	006457	7
022964	007433	21
023010	011006	14
023077	012981	21
023210	014716	19
023232	017923	20
023234	015873	19
023338	014802	5
023471	005081	3
023507	009685	9
023642	005084	4
023645	007404	4
023771	013494	23
023824	009685	9
023860	018823	7
023861	023733	17
024266	022595	18
024302	018069	18

NTI

Conversões	N° NTI	Pág.
024357	024356	15
024436	018823	7
024552	024551	18
024644	024643	18
024691	024690	19
024720	024573	17
024758	016060	11
024880	024573	17
025060	025059	6
025422	012523	32
025423	018755	6
025709	017551	30
025882	025059	6
026024	024760	44
026033	025011	13
026034	025434	13
026095	012516	31
026264	005800	26
026379	012524	31
026392	012525	31
026401	026022	41
026402	026026	5
026408	026026	5
026488	025927	29
026489	025928	29
026490	025928	29
026492	009598	32
026708	026021	42
026829	005800	26
026830	018738	26
026831	003490	26
027109	027310	3
027238	027234	6
027281	016822	42
027282	024573	17
027311	027310	3
027313	027312	33
027314	027312	33
027315	027312	33
027319	024573	17
027320	024573	17
027945	027944	15
027952	027951	3
028059	028058	4
028141	028140	32
028142	028140	32
028785	028140	32

SCANIA

Conversões	N° NTI	Pág.
10572941	025401	44
10572946	025401	44
10572951	025401	44
10574929	025401	44
10574930	025401	44
10574936	025401	44
10575182	001611	41
10575185	001611	41
1105332	007263	30
1105332 A	003096	30
1112542	001730	15
1123296	006044	28
1304161	009066	25
1320420 X	004241	36
1320420 XV	013647	36

SCANIA

Conversões	N° NTI	Pág.
1321239	009242	40
1321420	009744	25
1321420 X	004241	36
1321420 XV	013647	36
1326847	009066	25
1326847 X	004241	36
1326847 XV	013647	36
1331770 B	016462	42
1331770 I	016126	41
1332131	014256	34
1332503	003490	26
1334036 X	011231	35
1336159	006544	46
1336159 A	024507	47
1340404	014256	34
1342106	016163	38
1345149	007993	25
1345149 X	011231	35
1345151	009066	25
1345151 X	004241	36
1345151 XV	013647	36
1348896	003490	26
1355979	017961	29
1358800	007263	30
1358800 A	003096	30
1358801	007263	30
1358801 A	003096	30
1360598	005800	26
1361136	007263	30
1361136 A	003096	30
1367453	018469	43
1369053	013003	38
1376474	005800	26
1390791	010295	35
1393332	006044	28
1400769	005800	26
1405803 R	025839	39
1421186	018469	43
1433655	012508	38
1434649	006044	28
1454590	018469	43
1455730	006044	28
1469161	018469	43
1484715	006282	47
1484715 E	017278	47
1484715 P	016635	47
1484715 PE	018679	48
1484715 X	018975	47
1484807	009744	25
1484808	009744	25
1484808 X	004241	36
1484808 XV	013647	36
1484809	009066	25
1484809 X	004241	36
1484809 XV	013647	36
1493461	018855	43
1498124	010295	35
1505927	005800	26
1507790	018738	26
1513717	018469	43
1522377	006044	28
1523399	018855	43
1523399 R	018168	48
1523400	018676	30
1523635	010295	35
1532517	017961	29

SCANIA

Conversões	N° NTI	Pág.
1541982	012508	38
1543633	017961	29
1545626	017961	29
1673552	003490	26
1673553	003490	26
1677877	003490	26
1725887	027220	35
1747894	001611	41
1747895 B	016462	42
1747895 I	016126	41
1754943	017961	29
1756460	019610	29
1764082	014715	38
1764085	010204	37
1767201	018738	26
1769778 R	024230	37
1784480	018855	43
1784480 R	018168	48
1800442	018676	30
1821737	018738	26
1846430	020391	38
1849429	025401	44
1878943	027971	51
1881850	020391	38
1903797 X	004241	36
1903797 XV	013647	36
1903798 X	011231	35
1927825	018855	43
1927825 R	018168	48
1927829	018676	30
1927829 X	019271	39
1927829 XA	026205	39
1931444	025401	44
1931444 C	027974	45
1952214	003486	35
1952214 X	000983	35
1953495 X	004241	36
1953495 XV	013647	36
2023059	025401	44
2023059 C	027974	45
2023059 X	025066	46
2037304	025401	44
2037304 C	027974	45
20405258	005800	26
204525	001730	15
2082082	025401	44
2082082 C	027974	45
2090529 R	024230	37
2131963	025401	44
2131963 C	027974	45
2181643 R	024230	37
2290706	025401	44
2290706 C	027974	45
2340075	027971	51
2392193	025401	44
2392193 C	027974	45
2392193 X	025066	46
2392281	025401	44
2392281 C	027974	45
2441305	025401	44
2441305 C	027974	45
244441 X	000983	35
2450508	025401	44
2450508 C	027974	45
2555088	018855	43
2555088 R	018168	48

SCANIA

Conversões	N° NTI	Pág.
2612292	025401	44
2612292 C	027974	45
2612292 X	025066	46
2825344	025401	44
2825344 C	027974	45
2825405	027971	51
284015	001192	25
298953	001611	41
338923	001611	41
345159	001611	41
360717	001611	41
360719	001611	41
363808	001730	15
371612 B	016462	42
371612 I	016126	41
374116 B	016462	42
374116 I	016126	41
389012	003490	26
389894	002989	45
522377	006044	28
523669	001730	15
523670	001730	15
532517	017961	29
537194	001887	24
537194 A	003513	24
537194 D	015165	24
537194 F	015166	24
538919	001921	24
550453	001955	48
550455	001956	48
550456	001957	46
550464	003499	39
550465	006544	46
550465 A	024507	47
550465 P	016634	47
550550	016163	38
551572	006044	28
572941	025401	44
572946	025401	44
572951	025401	44
574929	025401	44
574930	025401	44
574936	025401	44
574937	025401	44
574942	025401	44
574943	025401	44
574944	025401	44
574952	025401	44
574995	025401	44

VARGA

Conversões	N° NTI	Pág.
RCCE00181	019223	23

VOLVO

Conversões	N° NTI	Pág.
1069205 VI	016820	42
1521371 VI	016822	42
1521587 V	026322	34
1521976 V	026322	34
1526523 V	003254	43
1526816 V	007438	25
1526817 VX	007721	36
1527355 VX	007721	36

VOLVO

Conversões	N° NTI	Pág.
1527363 V	006051	25
1527363 VX	007724	36
1527463 VX	007724	36
1581209 V	003515	32
15812092 V	003515	32
1614351 V	003515	32
16143513 V	003515	32
1620462 V	003515	32
16204620 V	003515	32
1628218 V	009624	31
16282188 V	009624	31
1652751 V	017478	37
1652857 V	015102	26
1655435 VI	016822	42
1655639 V	003254	43
1656239 V	015102	26
1662959 V	006051	25
1668501 VI	016822	42
1669422 V	024281	34
1669488 V	003515	32
16694887 V	003515	32
1671953 VI	016822	42
1672129 VI	017175	41
1673067 V	003254	43
20365523 V	017478	37
20524584 VI	017175	41
20524585 VI	017176	41
20528900 V	022635	27
20553368 V	024837	29
205535588 V	014970	31
20553587 V	014970	31
20569775 V	027973	17
20583314 V	027973	17
20806451 V	024333	33
20812087 V	028134	32
20835246 V	014970	31
20843686 V	018151	34
20843687 V	018151	34
21284852 V	018151	34
21320923 V	024333	33
21320929 V	028134	32
21465235 V	024333	33
21465238 V	028134	32
21580956 V	024333	33
21580968 V	028134	32
21580972 V	028134	32
21580977 V	024333	33
22085052 V	024760	44
22085058 V	024760	44
22279199 V	027973	17
22279233 V	027973	17
22317371 VI	017176	41
22429963 V	028134	32
22440437 V	028134	32
22809232 V	028134	32
22809232 VR	026334	46
23105448 V	024760	44
23105541 V	024760	44
23417523 V	028134	32
23417526 V	028134	32
267321 V	003254	43
267532 V	003254	43
271194 V	003517	49
273660 V	002531	39
276820 V	017478	37
276833 V	018964	39

VOLVO

Conversões	N° NTI	Pág.
3092050 V	017478	37
3092575 V	017474	36
3093098 V	014669	48
3093099 V	006048	48
3093100 V	006048	48
3093230 V	017478	37
3094523 V	018964	39
3094550 V	006048	48
3094730 V	018964	39
3192126 VI	017176	41
3192696 V	014970	31
8112202 V	003254	43
8126730 V	003515	32
8127721 V	002531	39
8171512 V	027973	17
8171720 VI	017175	41
8171721 VI	017176	41
8172824 V	014970	31
85002040 V	024760	44
85002343 V	028134	32
85003219 VI	016822	42
85003685 V	028134	32
85003696 V	028134	32
85003699 V	028134	32
85008040 V	024760	44
85009696 V	028134	32
85009699 V	028134	32
85013166 V	028134	32
85013339 V	014970	31
85019166 V	028134	32
85020472 V	028134	32
85022454 V	028134	32
85026472 V	028134	32
85102142 V	009877	49
85102142 VA	012772	49
85102142 VP	016633	49
85117701 V	027973	17
K628492AM VI	017175	41

VW

Conversões	N° NTI	Pág.
2P0721405	025296	28
2R0253853B	005081	3
2RD253853	005081	3
2RD253853B	005081	3
2RD253853C	005081	3
2RD253853D	005081	3
2RE253853	005081	3
2RE253853B	005081	3
2RH253853	005084	4
2RH253853C	005084	4
2RK253853	007404	4
2RP141147A	005056	35
2RP253853B	005084	4
2RP253853C	005084	4
2RP253861	005095	27
2S2253853A	017731	34
2S2253853B	013935	34
2S2298109	017728	26
2T0253853A	005084	4
2T2253853	013935	34
2TA253853B	005081	3
2TA253853C	005081	3
2TA253861	005097	3
2TD253853	005084	4

VW

Conversões	N° NTI	Pág.
2TK253853	005081	3
2TK253861	005095	27
2VB721405	013494	23
2W0253853	005084	4
4214299160	005084	4
8845032820	005084	4
TAF253861	005096	27
TAR253853	005084	4
TAR253853A	005084	4
TAR721405	004560	23
TE3721405	004560	23
TEG253853B	005084	4
TEG253853C	005084	4
TF3721405	004560	23
TLG253853	005084	4
TLG253853A	005084	4
TMG253853	007404	4
TMG253853A	007404	4
TN4253861	005094	3
TRA253853	005084	4
TRA253853A	005084	4

WABCO

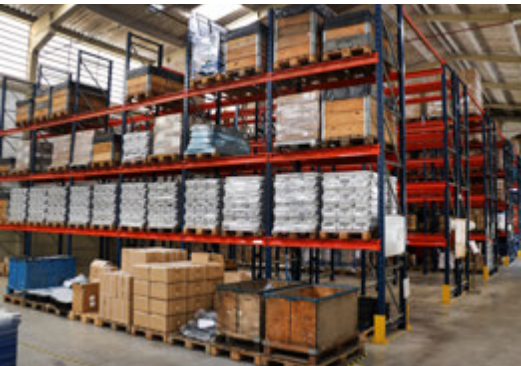
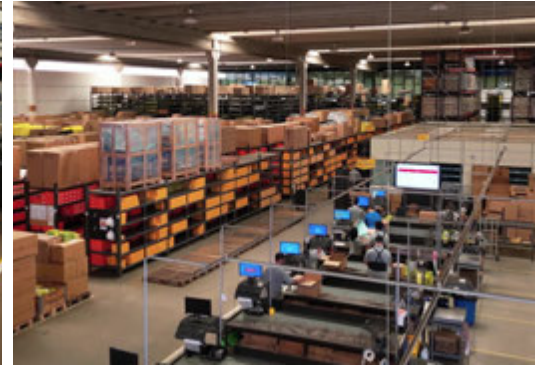
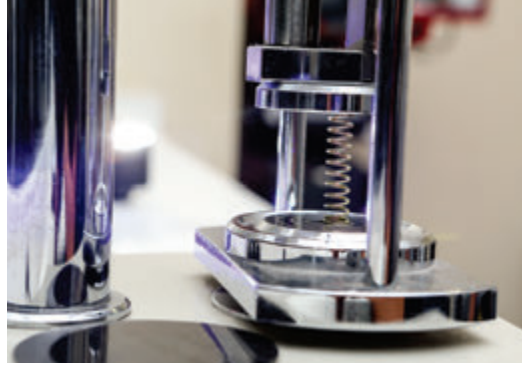
Conversões	N° NTI	Pág.
4213500830	027310	3
4213500870	027310	3
4213509352	028058	4
4213520820	027951	3
4411005392	018154	14
8845029614	009685	9
8845037280 A	013189	5
8913505204	011006	14
8995061502	007719	10
9650019022	017900	4
9700510010	019441	14
9700510010 C	023731	8
9700510010 CN	023811	11
9700510010 P	019350	11
9700510134	006456	7
9700510174	017627	7
9700510250	019385	5
9700510494	024689	10
9700511000	017565	5
9700511000 C	018823	7
9700511000 T	018824	14
9700511070 A	013189	5
9700511200	019385	5
9700511202	016060	11
9700511250	014801	6
9700511280 A	013189	5
9700511514	012033	8
9700511630	014801	6
9700511900	018755	6
9700512170	026026	5
9700512270	015449	6
9700512270 C	016534	8
9700512282	018559	11
9700512310	015449	6
9700513554	018642	14
9700514310	014802	5
9700515994	023882	7
9700516282	007415	9
9700516420	025059	6
9700516420 X	025011	13
9700516420 XA	025434	13

WABCO

Conversões	N° NTI	Pág.
9700517332	024593	8
9700518230 R	025662	13
9700519062	004109	13
9700519062 P	007179	10
9700519062 PG	007187	12
9700519172	007776	11
9700519542	004109	13
9700519542 P	007179	10
9700519552	004109	13
9700519562	004110	12
9700519562 P	007179	10
9700519562 PG	007187	12
9700519702 X	025011	13
9700519702 XA	025434	13
9700519742	007423	13
9700519742 P	007424	12
9700519742 PG	007461	11
9700519832	004109	13
9700519952	018364	12
9701500010	019441	14
9701500010 P	019350	11
9701509232 JB	026083	10
9701509232 P	019350	11
9709016312	012713	9
9709020174 C	018823	7
9709020174 T	018824	14
9709020274	013204	8
9709030104	006457	7

ZF

Conversões	N° NTI	Pág.
0501211805	024189	50
0501211805 P	024479	51
0501216319 X	025015	50
0501217253 X	024785	50
0750112253	016387	37
1316051835 C	024238	45
23814	023814	46
24872	024872	9





www.ntifreios.com.br

EMPRESA CERTIFICADA
CERTIFIED COMPANY ISO 9001:2015

