



# CATÁLOGO DE FREIOS

*Catalogue of Brakes*

## SERVOS E CILINDROS

*Clutch Servos  
And Cylinders*

[www.ntifreios.com.br](http://www.ntifreios.com.br)

EMPRESA CERTIFICADA  
CERTIFIED COMPANY ISO 9001:2015

A Cipec iniciou suas atividades em 1983 na cidade de São Caetano como um pequeno distribuidor e fabricante de peças de reposição para caminhões e ônibus. Trabalhando com empenho e seriedade, a Cipec rapidamente ampliou seu leque de produtos de distribuição, alcançando logo em seguida o status de referência nacional no mercado de reposição da linha Scania.

Em 1999, devido ao ritmo crescente dos negócios, a estrutura da Cipec já não comportava a demanda, levando a empresa a transferir suas atividades para uma área de 20.000 m<sup>2</sup> em Indaiatuba, localizada estrategicamente no interior paulista. Nesse novo local, a empresa investiu fortemente na parte fabril e agregou as linhas Volvo, VW, MWM, Cummins e Iveco.

Com amplo espaço fabril e novos nichos de mercado se abrindo, em 2003 a Cipec inovou mais uma vez, implantando uma completa linha de servos de embreagem, válvulas e reparos de freios para linha pesada. Surgiu então a NTI, uma marca Cipec que em pouco tempo ficaria conhecida no mercado, oferecendo um produto competitivo e altamente confiável.

Atualmente, a Cipec conta com mais de 170 colaboradores e comercializa mais de 22.000 itens a partir de sua unidade fabril localizada em Indaiatuba, ampliando ainda mais sua capacidade de produção e expedindo mais de 30 toneladas de produtos por dia para mais de 50 países em todo o mundo.

Cipec began its activities in 1983 in the city of São Caetano as a small distributor and manufacturer of spare parts for trucks and buses. Working with dedication and seriousness, Cipec quickly expanded its range of distribution products and soon achieved national reference status in the replacement market for the Scania line.

By 1999, its structure could no longer accommodate the growing pace of business, prompting Cipec to transfer its operations to a 20,000 m<sup>2</sup> area in Indaiatuba, strategically located in the interior of São Paulo. Strong investments were made in the manufacturing sector, and the Volvo, VW, MWM, Cummins, and Iveco lines were added.

With ample manufacturing space and new market niches emerging, Cipec innovated once again in 2003, introducing a complete line of clutch servos, valves, and brake repair kits for heavy-duty applications. Thus, NTI was born, a Cipec brand that quickly became known in the market, offering competitive and highly reliable products.

Today, Cipec employs over 170 employees and sells over 22,000 items from its manufacturing facility located in Indaiatuba, further increasing its production capacity and shipping over 30 tons of products per day to more than 50 countries worldwide.

La Cipec inició sus actividades en 1983 en la ciudad de São Caetano como un pequeño distribuidor y fabricante de repuestos para camiones y autobuses. Trabajando con dedicación y seriedad, Cipec amplió rápidamente su gama de productos de distribución y pronto alcanzó el estatus de referencia nacional en el mercado de repuestos para la línea Scania.

Para 1999, su estructura ya no podía soportar el creciente ritmo de negocios, lo que llevó a Cipec a trasladar sus operaciones a una área de 20,000 m<sup>2</sup> en Indaiatuba, estratégicamente ubicada en el interior de São Paulo. Se realizaron fuertes inversiones en el sector manufacturero y se añadieron las líneas Volvo, VW, MWM, Cummins y Iveco.

Con un amplio espacio de fabricación y nuevos nichos de mercado emergentes, Cipec innovó una vez más en 2003, introduciendo una línea completa de servos de embrague, válvulas y reparaciones de frenos para aplicaciones de servicio pesado. Así nació NTI, una marca de Cipec que rápidamente se hizo conocida en el mercado, ofreciendo productos competitivos y altamente confiables.

Hoy en día, Cipec emplea a más de 170 trabajadores y vende más de 22,000 artículos desde su planta de fabricación ubicada en Indaiatuba, aumentando aún más su capacidad de producción y enviando más de 30 toneladas de productos al día a más de 50 países en todo el mundo.



|                  |    |
|------------------|----|
| WABCO            | 03 |
| CILINDROS        | 03 |
| SERVOS           | 05 |
| KNORR            | 15 |
| CILINDROS        | 15 |
| SERVOS           | 17 |
| VARGA            | 23 |
| CILINDROS        | 23 |
| BENDIX           | 24 |
| CILINDROS        | 24 |
| DIVERSOS         | 25 |
| CILINDROS        | 25 |
| SERVOS           | 41 |
| CONTATOS         | 52 |
| ÍNDICE REMISSIVO | 53 |

|                   |    |
|-------------------|----|
| WABCO             | 03 |
| CYLINDERS         | 03 |
| CLUTCH SERVO      | 05 |
| KNORR             | 15 |
| CYLINDERS         | 15 |
| CLUTCH SERVO      | 17 |
| VARGA             | 23 |
| CYLINDERS         | 23 |
| BENDIX            | 24 |
| CYLINDERS         | 24 |
| DIVERSOS          | 25 |
| CYLINDERS         | 25 |
| CLUTCH SERVO      | 41 |
| CONTACTS          | 52 |
| PART NUMBER INDEX | 53 |

WABCO: 4213520820

NTI: 027951 | NTI: 027952 | WABCO: 4213520820



CIL. ATUADOR CX.CAMBIO  
 CIL. ATUADOR CX.CAMBIO  
 GEARBOX ACTUATOR HOUSING

MERCEDES: ACTROS, AXOR

WABCO: 4213500830

NTI: 027310 | NTI: 027109, 027311 | WABCO: 4213500830, 4213500870



CIL. COMANDO ALOJAMENTO CX. CAMBIO  
 ACTROS  
 CIL. COMANDO ALOJAMENTO CX. CAMBIO  
 ACTROS  
 GEARBOX CHANGING CYLINDER M.BENZ  
 ACTROS WABCO TYPE

MERCEDES: ACTROS, AXOR

WABCO: TN4253861

NTI: 005094 | NTI: 021857, 022634 | VW: TN4253861



CILINDRO F. MOTOR SIST. WABCO  
 CILINDRO DE FRENO MOTOR WABCO  
 ENGINE BRAKE CYLINDER WABCO

VW: 12.140H, 13.170, 14.150, 14.200, 14.220, 15.170, 16.170, 16.220, 16.220 LEITO, 17.210, 24.220, 24.250, 35.300, 35.300 LEITO

WABCO: 2TA253861

NTI: 005097 | NTI: 022636, 022662 | VW: 2TA253861



CILINDRO F. MOTOR SIST. WABCO  
 CILINDRO DE FRENO MOTOR WABCO  
 ENGINE BRAKE CYLINDER WABCO

VW: 17.2400T, 17.260EOT, 18.3100T, 18.320EOT, 7.100, 7.110, 7.120, 8.100, 8.120, 8.120OD, 8.140, 8.140CE, 8.140CKD, 8.140CO, 8.150, 8.150 EOD, 8.150 OD, 8.150E, 8.150E PLUS, 9.150, 9.150E, 9.150E CUMMINS DELIVERY, 9.150EOD, 9.150OD, L.80

WABCO: 2RD253853B

NTI: 005081 | NTI: 021845, 022630, 023471 | VW: 2R0253853B, 2RD253853, 2RD253853B, 2RD253853C, 2RD253853D, 2RE253853, 2R...



FREIO MOTOR =74MM= 2-7/8  
 FRENO MOTOR CPL WABCO  
 ENGINE BRAKE 74MM WABCO SYSTEM

FORD: 814, 815, 915 | VW: 12.140T, 13.150, 13.170E, 13.180E, 15.170E, 15.180E, 15.180EOD, 15.190E, 15.190EOD, 7.100, 7.110, 7.120, 8.100, 8.120, 8.120OD, 8.140, 8.140CO, 8.150, 8.150E, 8.150EOD, 8.150OD, 9.150, 9.150E, 9.150EOD, 9.150OD, L.80



WABCO: TAR253853

NTI: 005084 | NTI: 018148, 022631, 023642 | VW: 2RH253853, 2RH253853C, 2RP253853B, 2RP253853C, 2T0253853A, 2TD253853, 2W0...



FREIO MOTOR =85MM= 3-3/8  
 FRENO DEL MOTOR CPL WABCO  
 ENGINE BRAKE 85MM WABCO SYSTEM

VW: 12.140H, 12.140T, 12.170BT, 12.180, 13.150, 13.170, 13.180, 13.190, 14.150, 14.170BT, 14.180, 14.200, 15.170, 15.180, 15.180EOD, 15.190, 15.190EOD, 16.170, 16.180CO, 16.200, 16.210, 16.210CO, 17.180, 17.210, 17.210 CUMMINS EURO 2, 17.210OD, 17.220, 17.250E, 17.300, 17.310, 18.310, 23.210, 23.210 CUMMINS EURO 2, 23.220, 23.250E, 23.310, 24.220, 24.250, 24.250E, 26.220, 26.260, 26.260E, 26.300, 26.310, 31.260, 35.300, 40.300

WABCO: TMG253853

NTI: 007404 | NTI: 018149, 018265, 021854, 023645 | VW: 2RK253853, TMG253853, TMG253853A



FREIO MOTOR =99MM= 3-7/8  
 FRENO MOTOR COMPLETO  
 ENGINE BRAKE 99MM

VW: 11.000 (85/...), 14.220, 15.180EOD, 15.190EOD, 16.220, 16.300, 17.220, 17.250E, 17.300, 17.310, 18.310, 23.250E, 24.220, 24.250, 24.250E, 26.220, 26.260, 26.300, 26.310, 31.260, 31.310, 35.300, 40.300

WABCO: 9650019022

NTI: 017900 | NTI: 017901 | WABCO: 9650019022

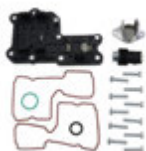


REP. CILINDRO EMBREAGEM  
 KIT CILINDRO DE EMBRAGUE VM  
 CLUTCH CYLINDER KIT VM

VOLVO: VM 260, VM 270 6X4, VM 310, VM 330

WABCO: 4213509352

NTI: 028058 | NTI: 028059 | WABCO: 4213509352



REP. CILINDRO COMANDO  
 REP. CILINDRO COMANDO  
 SHIFTING CYLINDER REPAIR KIT



CIL. COMANDO ALOJAMENTO CX. CAMBIO  
 ACTROS  
 CIL. COMANDO ALOJAMENTO CX. CAMBIO  
 ACTROS  
 GEARBOX CHANGING CYLINDER M.BENZ  
 ACTROS WABCO TYPE

MERCEDES: ACTROS, AXOR

**WABCO: 9700514310**

NTI: 014802 | NTI: 023338 | WABCO: 9700514310



SERVO EMBR. =LONGO=  
SERVO EMBRAGUE  
CLUTCH SERVO (LONG)

MERCEDES: 1938S, 1944S, 2638B, 2638S, ATEGO1729, ATEGO2429, ATRON 2729, AXOR1933, AXOR2036, AXOR2041, AXOR2533, AXOR2536, AXOR2541, AXOR2544, AXOR2641, AXOR2644, AXOR2831, AXOR3341, AXOR3344, AXOR4141, AXOR4144, O500 RSD

**WABCO: 9700511280 A**

NTI: 013189 | NTI: 013190, 013191, 013192 | WABCO: 8845037280 A, 9700511070 A, 9700511280 A



SERVO EMBR. 110MM TIPO WABCO  
SERVO EMBRAGUE 110MM  
CLUTCH SERVO 110M WABCO

FORD: 1722E 4X2, 1730 ARG., 2422, 2422E 6X2, 2425, 2428E 6X2, 2622, 2622E 6X4, 2626, 2628E 6X4, 2630, 2631, 2632E 6X4, 2831, 2932E 6X4, 4030, 4031, 4331, 4432E 4X2, 4532E/1832E, 5031, 5032E 6X4, 6332E 6X4, B1618 ONIBUS, B1621 ONIBUS | MERCEDES: 1518, 1525, 1620, 1718, 1725, 1938S, 1944S, ATEGO1418, ATEGO1718, ATEGO1725, ATEGO2425, L1620, L1622, L2325, L2635, L2638, LB2325, LK2325, LK2638, LS1625, LS1630, LS1632, LS1634, LS1929 (FASE II), LS1932, LS1933, LS1934, LS1935, LS1938, LS1941, LS2635, LS2638, O370, O370 R, O370 RS, O370 RSD, O371 R, O371 RS, O371 RSD, O371 RSE, O371 RSL, O371 U, O371 UP, O400, O400 RS, O400 RSD, O400 RSE, O400 RSL, O400 UP, O500, O500 M, O500 R, O500 U, OF1218, OF1319, OF1417, OF1418, OF1618, OF1620, OF1620 PLUS, OF1721, OF1722, OH1421 L, OH1621 L, OH1625, OH1625 L, OH1628 L, OH1635 L | VW: 15.180E OD MWM EURO 3, 15.180EOD, 15.190E OD MWM EURO 3, 15.190EOD, 16.180CO, 16.210CO, 17.180 CUMMINS EURO 3, 17.180 MWM EURO 3, 17.210, 17.210 OD C/DIR.A DIREITA, 17.210E OD, 17.210OD, 17.220, 17.220 CUMMINS EURO 3, 17.220 MWM EURO 3, 17.240OT, 17.250E, 17.260EOT, 17.300, 17.310, 18.310, 18.310OT, 18.320EOT, 23.210, 23.220, 23.250E, 23.310, 24.220, 24.220 CUMMINS EURO 3, 24.220 MWM EURO 3, 24.250, 24.250 CHILE, 24.250E, 26.220, 26.260, 26.260E, 26.300, 26.310, 31.260, 31.260E, 31.310, 40.300, 40.300 LEITO

**WABCO: 9700511200**

NTI: 019385 | NTI: 022857 | WABCO: 9700510250, 9700511200



SERVO EMBR. CANECA LONGA =BASE  
MAIOR= FORD  
SERVO DE EMBRAGUE LONGO =FORD=  
CLUTCH SERVO LONG HOUSING WABCO

FORD: 1722 4X2, 2422 6X2, 2428 6X2, 2429 6X2, 2622 6X4, 2623 6X4, 2628 6X4, 2629 6X4

**WABCO: 9700511000**

NTI: 017565 | NTI: 022536, 022870 | WABCO: 9700511000



SERVO EMBR. CANECA LONGA =WABCO=  
SERVO DE EMBRAGUE CARCAZA LONGA  
WABCO  
CLUTCH SERVO LONG HOUSING WABCO

VW: 15.180EOD, 15.190EOD, 16.270CO, 17.210E OD, 17.240CO, 17.260CO

**WABCO: 9700512170**

NTI: 026026 | NTI: 026402, 026408 | WABCO: 9700512170



SERVO EMBR. DAF/MAN  
SERVO EMBR. DAF/MAN  
CLUTCH SERVO DAF/MAN

DAF: XF | DAF: XF



WABCO: 9700512270

NTI: 015449 | NTI: 017158 | WABCO: 9700512270, 9700512310



SERVO EMBR. IVECO N. STRALIS 410/460 =  
HASTE CURTA=  
SERVO EMBRAGUE IVECO NUEVO STRALIS  
CLUTCH SERVO IVECO STRALIS 410/460

DIVERSOS: - | IVECO: -, NOVO STRALIS

WABCO: 9700511900

NTI: 018755 | NTI: 025423 | WABCO: 9700511900



SERVO EMBR. O-500 TIPO WABCO  
SERVO EMBR. O-500 TIPO WABCO  
CLUTCH SERVO O-500 WABCO

MERCEDES: O500 M, OF1417, OF1418, OF1721, OF1722

WABCO: 9700511630

NTI: 014801 | NTI: 022858, 022859 | WABCO: 9700511250, 9700511630



SERVO EMBR. S/ IND. DESGASTE  
SERVO EMBRAGUE  
CLUTCH SERVO (NO ABLATION INDICATOR)

FORD: 1722E 4X2, 1730, 1730 ARG., 2422, 2422E 6X2, 2425, 2428E 6X2, 2622, 2622E 6X4, 2626, 2628E 6X4, 2630, 2631, 2632E 6X4, 2831, 2932E 6X4, 3222, 3224, 4030, 4031, 4331, 4432E 4X2, 4532E/1832E, 5031, 5032E 6X4, 6332E 6X4, B1618 ONIBUS, B1621 ONIBUS | IVECO: NOVO STRALIS, STRALIS | MERCEDES: 1518, 1525, 1620, 1718, 1725, ATEGO1418, ATEGO1718, ATEGO1725, ATEGO2425, L1620, L1622, L2325, L2635, LB2325, LK2325, LS1625, LS1630, LS1632, LS1634, LS1929 (FASE II), LS1932, LS1933, LS1934, LS1935, LS1941, LS2635, O370, O370 R, O370 RS, O370 RSD, O371 R, O371 RS, O371 RSD, O371 RSE, O371 RSL, O371 U, O371 UP, O400, O400 RS, O400 RSD, O400 RSE, O400 RSL, O500, O500 M, O500 R, O500 U, OF1218, OF1319, OF1417, OF1418, OF1618, OF1620, OF1620 PLUS, OF1721, OF1722, OH1421 L, OH1621 L, OH1625, OH1625 L, OH1628 L, OH1635 L | VW: 15.180E OD MWM EURO 3, 15.180EOD, 15.190E OD MWM EURO 3, 15.190EOD, 16.180CO, 16.210CO, 17.180 CUMMINS EURO 3, 17.180 MWM EURO 3, 17.210, 17.210 OD C/DIR.A DIREITA, 17.210E OD, 17.210E OD MWM EURO 3, 17.210OD, 17.220, 17.220 CUMMINS EURO 3, 17.220 MWM EURO 3, 17.240OT, 17.250E, 17.260EOT, 17.300, 17.310, 18.310, 18.310OT, 18.320EOT, 23.210, 23.220, 23.250E, 23.310, 24.220, 24.220 CUMMINS EURO 3, 24.220 MWM EURO 3, 24.250, 24.250 CHILE, 24.250E, 26.220, 26.260, 26.260E, 26.300, 26.310, 31.260, 31.260E, 31.310, 40.300, 40.300 LEITO

WABCO: 2T2721261E

NTI: 027234 | MAN: 2T2721261E | NTI: 027238



SERVO EMBREAGEM MAN  
SERVO EMBREAGEM MAN  
CLUTCH SERVO MAN

DIVERSOS: - | MAN: 13.190 WORKER EURO V, 15.190 WORKER EURO V, 17.190 WORKER EURO V, 17.230 WORKER EURO V, 17.330 ADVANTECH, 19.330T ADVANTECH, 23.230 WORKER EURO V, 24.330 ADVANTECH, 25.330T ADVANTECH, 26.330T ADVANTECH, 26.360T ADVANTECH, 26.390T ADVANTECH, 26.420T ADVANTECH, 31.330 ADVANTECH, 31.390 ADVANTECH

WABCO: 9700516420

NTI: 025059 | NTI: 025060, 025882 | WABCO: 9700516420



SERVO EMBREAGEM MAN  
SERVO EMBREAGEM MAN  
CLUTCH SERVO MAN REP. KIT W/COVER

DIVERSOS: - | MAN: 10.160 ADVANTECH MAN, 10.160PLUS DELIVERY, 13.190 ADVANTECH MAN, 13.190 WORKER EURO V, 15.190 ADVANTECH MAN, 15.190 OD EURO 5 MAN, 15.190 WORKER EURO V, 17.190 ADVANTECH MAN, 17.190 WORKER EURO V, 17.230 ADVANTECH MAN, 17.230 WORKER EURO V, 17.280 ADVANTECH MAN, 23.230 WORKER EURO V, 23.330 ADVANTECH MAN, 24.280 ADVANTECH MAN, 26.280 ADVANTECH MAN, 31.280 ADVANTECH MAN, 5.150 ADVANTECH MAN, 5.150 OD, 8.160 ADVANTECH MAN, 8.160 DELIVERY, 8.160 OD, 9.160 ADVANTECH MAN, 9.160 DELIVERY, 9.160 OD

**WABCO: 9700515994**

NTI: 023882 | WABCO: 9700515994


 ALOJAMENTO PNEUMATICO  
 ALOJAMENTO PNEUMATICO  
 BRAKE SERVO PNEUMATIC HOUSING

 SERVO EMBR. =LONGO=  
 SERVO EMBRAGUE  
 CLUTCH SERVO (LONG)

MERCEDES: 1938S, 1944S, 2638B, 2638S, ATEGO1729, ATEGO2429, ATRON 2729, AXOR1933, AXOR2036, AXOR2041, AXOR2533, AXOR2536, AXOR2541, AXOR2544, AXOR2641, AXOR2644, AXOR2831, AXOR3341, AXOR3344, AXOR4141, AXOR4144, 0500 RSD

**WABCO: 9700510134**

NTI: 006456 | NTI: 022690, 022797 | WABCO: 9700510134


 CIL. CURTO SERVO EMBR. S/INDIC.  
 CARCAZA DEL SERVO DE EMBRAGUE  
 CLUTCH SERVO SHORT HOUSING

 SERVO EMBR. 110MM TIPO WABCO  
 SERVO EMBRAGUE 110MM  
 CLUTCH SERVO 110M WABCO

FORD: 1722E 4X2, 1730 ARG., 2422, 2422E 6X2, 2425, 2428E 6X2, 2622, 2622E 6X4, 2626, 2628E 6X4, 2630, 2631, 2632E 6X4, 2831, 2932E 6X4, 4030, 4031, 4331, 4432E 4X2, 4532E/1832E, 5031, 5032E 6X4, 6332E 6X4, B1618 ONIBUS, B1621 ONIBUS | MERCEDES: 1518, 1525, 1620, 1718, 1725, 1938S, 1944S, ATEGO1418, ATEGO1718, ATEGO1725, ATEGO2425, L1620, L1622, L2325, L2635, L2638, LB2325, LK2325, LK2638, LS1625, LS1630, LS1632, LS1634, LS1929 (FASE II), LS1932, LS1933, LS1934, LS1935, LS1938, LS1941, LS2635, LS2638, O370, O370 R, O370 RS, O370 RSD, O371 R, O371 RS, O371 RSD, O371 RSE, O371 RSL, O371 U, O371 UP, O400, O400 RS, O400 RSD, O400 RSE, O400 RSL, O400 UP, O500, O500 M, O500 R, O500 U, OF1218, OF1319, OF1417, OF1418, OF1618, OF1620, OF1620 PLUS, OF1721, OF1722, OH1421 L, OH1621 L, OH1625, OH1625 L, OH1628 L, OH1635 L | VW: 15.180E OD MWM EURO 3, 15.180EOD, 15.190E OD MWM EURO 3, 15.190EOD, 16.180CO, 16.210CO, 17.180 CUMMINS EURO 3, 17.180 MWM EURO 3, 17.210, 17.210 OD C/DIR.A DIREITA, 17.210E OD, 17.210OD, 17.220, 17.220 CUMMINS EURO 3, 17.220 MWM EURO 3, 17.220EOT, 17.260EOT, 17.300, 17.310, 18.310, 18.310OT, 18.320EOT, 23.210, 23.220, 23.250E, 23.310, 24.220, 24.220 CUMMINS EURO 3, 24.220 MWM EURO 3, 24.250, 24.250 CHILE, 24.250E, 26.220, 26.260, 26.260E, 26.300, 26.310, 31.260, 31.260E, 31.310, 40.300, 40.300 LEITO

**WABCO: 9709020124**

NTI: 024436 | WABCO: 9709020124


 CIL. LONGO SERVO EMBR. MAN =WABCO=  
 CIL. LONGO SERVO EMBR. MAN =WABCO=  
 CLUTCH SERVO HOUSING LONG TYPE . MAN  
 WABCO SYSTEM

 SERVO EMBR. C/ ACIONAM. TRANS. SHIFT =  
 MAN=  
 SERVO EMBR. C/ ACIONAM. TRANS. SHIFT =  
 MAN=  
 CLUTCH SERVO =MAN=

MAN: 15.190 OD EURO 5 MAN, 17.230 OD EURO V MAN, 17.280OT MAN

**WABCO: 9709030104**

NTI: 006457 | NTI: 022953, 022954 | WABCO: 9709030104


 CIL. LONGO SERVO EMBR. S/INDIC.  
 CILINDRO DE EMBRAGUE LARGO MB  
 CLUTCH SERVO HOUSING MBB (NO WEAR)  
 DOWN INDICATOR

 SERVO EMBR. S/ IND. DESGASTE  
 SERVO EMBRAGUE  
 CLUTCH SERVO (NO ABLATION INDICATOR)

FORD: 1722E 4X2, 1730, 1730 ARG., 2422, 2422E 6X2, 2425, 2428E 6X2, 2622, 2622E 6X4, 2626, 2628E 6X4, 2630, 2631, 2632E 6X4, 2831, 2932E 6X4, 3222, 3224, 4030, 4031, 4331, 4432E 4X2, 4532E/1832E, 5031, 5032E 6X4, 6332E 6X4, B1618 ONIBUS, B1621 ONIBUS | IVECO: NOVO STRALIS, STRALIS | MERCEDES: 1518, 1525, 1620, 1718, 1725, 1938S, 1944S, ATEGO1418, ATEGO1718, ATEGO1725, ATEGO2425, L1620, L1622, L2325, L2635, L2638, LB2325, LK2325, LK2638, LS1625, LS1630, LS1632, LS1634, LS1929 (FASE II), LS1932, LS1933, LS1934, LS1935, LS1938, LS1941, LS2635, LS2638, O370, O370 R, O370 RS, O370 RSD, O371 R, O371 RS, O371 RSD, O371 RSE, O371 RSL, O371 U, O371 UP, O400, O400 RS, O400 RSD, O400 RSE, O400 RSL, O400 UP, O500, O500 M, O500 R, O500 U, OF1218, OF1319, OF1417, OF1418, OF1618, OF1620, OF1620 PLUS, OF1721, OF1722, OH1421 L, OH1621 L, OH1625, OH1625 L, OH1628 L, OH1635 L | VW: 15.180E OD MWM EURO 3, 15.180EOD, 15.190E OD MWM EURO 3, 15.190EOD, 16.180CO, 16.210CO, 17.180 CUMMINS EURO 3, 17.180 MWM EURO 3, 17.210, 17.210 OD C/DIR.A DIREITA, 17.210E OD, 17.210E OD MWM EURO 3, 17.210OD, 17.220, 17.220 CUMMINS EURO 3, 17.220 MWM EURO 3, 17.240OT, 17.250E, 17.260EOT, 17.300, 17.310, 18.310, 18.310OT, 18.320EOT, 23.210, 23.220, 23.250E, 23.310, 24.220, 24.220 CUMMINS EURO 3, 24.220 MWM EURO 3, 24.250, 24.250 CHILE, 24.250E, 26.220, 26.260, 26.260E, 26.300, 26.310, 31.260, 31.260E, 31.310, 40.300, 40.300 LEITO

**WABCO: 9700511000 C**

NTI: 018823 | NTI: 023860 | WABCO: 9700511000 C, 9709020174 C


 CIL. LONGO SERVO EMBR. VW =WABCO=  
 CIL. LONGO SERVO EMBR. VW =WABCO=  
 CLUTCH SERVO LONG HOUSING WABCO  
 TYPE

 SERVO EMBR. CANECA LONGA =WABCO=  
 SERVO DE EMBRAGUE CARCAZA LONGA  
 WABCO  
 CLUTCH SERVO LONG HOUSING WABCO

VW: 15.180EOD, 15.190EOD, 16.270CO, 17.210E OD, 17.240CO, 17.260CO



WABCO: 9700510174

NTI: 017627 | WABCO: 9700510174



CIL. SERVO EMBR. FORD  
CIL. SERVO EMBR. FORD  
CLUTCH SERVO HOUSING



SERVO EMBR. CANECA LONGA =WABCO=  
SERVO DE EMBRAGUE CARCAZA LONGA  
WABCO  
CLUTCH SERVO LONG HOUSING WABCO

FORD: 1722 4X2, 2422 6X2, 2428 6X2, 2429 6X2, 2622 6X4, 2623 6X4, 2628 6X4, 2629 6X4 | VW: 15.180EOD, 15.190EOD, 16.270CO, 17.210E OD, 17.240CO, 17.260CO

WABCO: 9700510010 C

NTI: 023731 | WABCO: 9700510010 C



CIL. SERVO EMBR. MOD. ELETRONICO =  
ACTROS=  
SERVO DE EMBRAGUE =ACTROS=  
CLUTCH SERVO =ACTROS=



SERVO EMBR. MOD. ELETRONICO ACTROS/  
AXOR  
SERVO DE EMBRAGUE =ACTROS=  
CLUTCH SERVO =ACTROS=

MERCEDES: ACTROS 2546, ACTROS 2646, ACTROS 2655, ACTROS 4844, ACTROS TODOS COM CAMBIO AUTOMATICO, ATEGO TODOS COM CAMBIO AUTOMATICO, ATRON TODOS COM CAMBIO AUTOMATICO, AXOR TODOS COM CAMBIO AUTOMATICO

WABCO: 9709020274

NTI: 013204 | WABCO: 9709020274



CIL. SERVO EMBR. O 500  
CUERPO NEUMATICO SERVO EMBRAGUE  
CLUTCH SERVO HOUSINH O500



SERVO EMBR. O-500 TIPO WABCO  
SERVO EMBR. O-500 TIPO WABCO  
CLUTCH SERVO O-500 WABCO

MERCEDES: O500 M, OF1417, OF1418, OF1721, OF1722

WABCO: 9700512270 C

NTI: 016534 | WABCO: 9700512270 C



CIL. SERVO EMBR. STRALIS 410/460  
CIL. SERVO EMBR. STRALIS 410/460  
CLUTCH SERVO HOUSING STRALIS 410/460



SERVO EMBR. IVECO N. STRALIS 410/460 =  
HASTE CURTA=  
SERVO EMBRAGUE IVECO NUEVO STRALIS  
CLUTCH SERVO IVECO STRALIS 410/460

IVECO: NOVO STRALIS, NOVO TRAKKER

WABCO: 9700511514

NTI: 012033 | WABCO: 9700511514



GUIA VALVULA PNEUMATICA SERVO  
GUIA VALVULA  
SERVO PNEUMATIC VALVE GUIDE



SERVO EMBR. 110MM TIPO WABCO  
SERVO EMBRAGUE 110MM  
CLUTCH SERVO 110M WABCO

FORD: 1722E 4X2, 1730 ARG., 2422, 2422 6X4, 2422E 6X2, 2425, 2425 6X4, 2428E 6X2, 2622, 2622E 6X4, 2626, 2628E 6X4, 2630, 2631, 2632E 6X4, 2831, 2932E 6X4, 3222, 3224, 3530, 4030, 4031, 4331, 4432E 4X2, 4532E/1832E, 5031, 5032E 6X4, 6332E 6X4, B1618 ONIBUS, B1621 ONIBUS | IVECO: STRALIS | MERCEDES: 1318C, 1518, 1525, 1620, 1718, 1725, 1938S, 1944S, ATEGO1418, ATEGO1718, ATEGO1725, ATEGO2425, L1620, L1622, L2325, L2635, L2638, LB2325, LK2325, LK2638, LS1625, LS1630, LS1632, LS1634, LS1929 (FASE II), LS1932, LS1933, LS1934, LS1935, LS1938, LS1941, LS2635, LS2638, O370, O370 R, O370 RS, O370 RSD, O371 R, O371 RS, O371 RSD, O371 RSE, O371 RSL, O371 U, O371 UP, O400, O400 RS, O400 RSD, O400 RSE, O400 RSL, O400 UP, O500, O500 M, O500 R, O500 U, OF1218, OF1319, OF1417, OF1418, OF1618, OF1620, OF1620 PLUS, OF1721, OF1722, OH1421 L, OH1621 L, OH1625, OH1625 L, OH1628 L, OH1635 L | VW: 15.180E OD MWM EURO 3, 15.180EOD, 15.190E OD MWM EURO 3, 15.190EOD, 16.180CO, 16.210CO, 16.270CO, 17.180 CUMMINS EURO 3, 17.180 MWM EURO 3, 17.210, 17.210 OD C/DIR.A DIREITA, 17.210E OD, 17.210OD, 17.220, 17.220 CUMMINS EURO 3, 17.220 MWM EURO 3, 17.240CO, 17.240OT, 17.250E, 17.260CO, 17.260EOT, 17.300, 17.310, 17.210CO, 18.310, 18.310OT, 18.320EOT, 23.210, 23.220, 23.250E, 23.310, 24.220, 24.220 CUMMINS EURO 3, 24.220 MWM EURO 3, 24.250, 24.250 CHILE, 24.250E, 26.220, 26.260, 26.260E, 26.300, 26.310, 31.260, 31.260E, 31.310, 40.300, 40.300 LEITO, 8.140, 8.150, 8.160 OD, 9.140, 9.150, 9.150E, 9.160 OD

WABCO: 9700517332

NTI: 024593 | WABCO: 9700517332

HASTE ACIONAMENTO  
HASTE ACIONAMENTO  
ACTION SHAT



SERVO EMBR. =LONGO=  
SERVO EMBRAGUE  
CLUTCH SERVO (LONG)



MERCEDES: 1938S, 1944S, 2638B, 2638S, ATEGO1729, ATEGO2429, ATRON 2729, AXOR1933, AXOR2036, AXOR2041, AXOR2533, AXOR2536, AXOR2541, AXOR2544, AXOR2641, AXOR2644, AXOR2831, AXOR3341, AXOR3344, AXOR4141, AXOR4144, O500 RSD

WABCO: 8845029614

NTI: 009685 | NTI: 023507, 023824 | WABCO: 8845029614

HASTE EXT. SERVO EMBREAGEM =MBB=  
ASTA EXTERNA SERVO EMBRAGUE  
ROD CLUTCH SERVO MBB



SERVO EMBR. 110MM TIPO WABCO  
SERVO EMBRAGUE 110MM  
CLUTCH SERVO 110M WABCO



FORD: 1722E 4X2, 1730 ARG., 2422, 2422E 6X2, 2425, 2428E 6X2, 2622, 2622E 6X4, 2626, 2628E 6X4, 2630, 2631, 2632E 6X4, 2831, 2932E 6X4, 4030, 4031, 4331, 4432E 4X2, 4532E/1832E, 5031, 5032E 6X4, 6332E 6X4, B1618 ONIBUS, B1621 ONIBUS | MERCEDES: 1518, 1525, 1620, 1718, 1725, 1938S, 1944S, ATEGO1418, ATEGO1718, ATEGO1725, ATEGO2425, L1620, L1622, L2325, L2635, L2638, LB2325, LK2325, LK2638, LS1625, LS1630, LS1632, LS1634, LS1929 (FASE II), LS1932, LS1933, LS1934, LS1935, LS1938, LS1941, LS2635, LS2638, O370, O370 R, O370 RS, O370 RSD, O371 R, O371 RS, O371 RSD, O371 RSE, O371 RSL, O371 U, O371 UP, O400, O400 RS, O400 RSD, O400 RSE, O400 RSL, O400 UP, O500, O500 M, O500 R, O500 U, OF1218, OF1319, OF1417, OF1418, OF1618, OF1620, OF1620 PLUS, OF1721, OF1722, OH1421 L, OH1621 L, OH1625, OH1625 L, OH1628 L, OH1635 L | VW: 15.180E OD MWM EURO 3, 15.180EOD, 15.190E CUMMINS 5,9L 190CV, 15.190E OD MWM EURO 3, 15.190EOD, 16.180CO, 16.210CO, 17.180 CUMMINS EURO 3, 17.180 MWM EURO 3, 17.210, 17.210 OD C/DIR.A DIREITA, 17.210E OD, 17.210E OD MWM EURO 3, 17.210OD, 17.220, 17.220 CUMMINS EURO 3, 17.220 MWM EURO 3, 17.2400T, 17.250E, 17.260EOT, 17.300, 17.310, 18.310, 18.310OT, 18.320EOT, 23.210, 23.220, 23.250E, 23.310, 24.220, 24.220 CUMMINS EURO 3, 24.220 MWM EURO 3, 24.250, 24.250 CHILE, 24.250 CHILE COM SERVO, 24.250E, 26.220, 26.260, 26.260E, 26.300, 26.310, 31.260, 31.260E, 31.310, 40.300, 40.300 LEITO

WABCO: 9700516282

NTI: 007415 | NTI: 022715 | WABCO: 9700516282

HASTE INT.SERVO EMBR. =WABCO= CURTO  
HORQUILLA SERVO EMBRAGUE  
SHORT ROD CLUTCH SERVO WABCO TYPE



SERVO EMBR. 110MM TIPO WABCO  
SERVO EMBRAGUE 110MM  
CLUTCH SERVO 110M WABCO



FORD: 1722E 4X2, 1730, 1730 ARG., 2422, 2422E 6X2, 2425, 2428E 6X2, 2622, 2622E 6X4, 2626, 2628E 6X4, 2630, 2631, 2632E 6X4, 2831, 2932E 6X4, 4030, 4031, 4331, 4432E 4X2, 4532E/1832E, 5031, 5032E 6X4, 6332E 6X4, B1618 ONIBUS, B1621 ONIBUS | MERCEDES: 1518, 1525, 1620, 1718, 1725, 1938S, 1944S, ATEGO1418, ATEGO1718, ATEGO1725, ATEGO2425, L1620, L1622, L2325, L2635, L2638, LB2325, LK2325, LK2638, LS1625, LS1630, LS1632, LS1634, LS1929 (FASE II), LS1932, LS1933, LS1934, LS1935, LS1938, LS1941, LS2635, LS2638, O370, O370 R, O370 RS, O370 RSD, O371 R, O371 RS, O371 RSD, O371 RSE, O371 RSL, O371 U, O371 UP, O400, O400 RS, O400 RSD, O400 RSE, O400 RSL, O400 UP, O500, O500 M, O500 R, O500 U, OF1218, OF1319, OF1417, OF1418, OF1618, OF1620, OF1620 PLUS, OF1721, OF1722, OH1421 L, OH1621 L, OH1625, OH1625 L, OH1628 L, OH1635 L | VW: 15.180E OD MWM EURO 3, 15.180EOD, 15.190E OD MWM EURO 3, 15.190EOD, 16.180CO, 16.210CO, 17.180 CUMMINS EURO 3, 17.180 MWM EURO 2, 17.180 MWM EURO 3, 17.210, 17.210 OD C/DIR.A DIREITA, 17.210E OD, 17.210E OD MWM EURO 3, 17.210OD, 17.220, 17.220 CUMMINS EURO 3, 17.220 MWM EURO 3, 17.2400T, 17.250E, 17.260EOT, 17.300, 17.310, 18.310, 18.310OT, 18.320EOT, 23.210, 23.220, 23.250E, 23.310, 24.220, 24.220 CUMMINS EURO 3, 24.220 MWM EURO 3, 24.250, 24.250 CHILE, 24.250 CHILE COM SERVO, 24.250E, 26.220, 26.260, 26.260E, 26.300, 26.310, 31.260, 31.260E, 31.310, 40.300, 40.300 LEITO

WABCO: 9709016312

NTI: 012713 | WABCO: 9709016312

HASTE INT.SERVO EMBR. =WABCO= LONGO  
HORQUILLA SERVO EMBRAGUE  
LONG ROD CLUTCH SERVO WABCO TYPE



SERVO EMBR. S/ IND. DESGASTE  
SERVO EMBRAGUE  
CLUTCH SERVO (NO ABLATION INDICATOR)



FORD: 1722E 4X2, 1730, 1730 ARG., 2422, 2422E 6X2, 2425, 2428E 6X2, 2622, 2622E 6X4, 2626, 2628E 6X4, 2630, 2631, 2632E 6X4, 2831, 2932E 6X4, 3222, 3224, 4030, 4031, 4331, 4432E 4X2, 4532E/1832E, 5031, 5032E 6X4, 6332E 6X4, B1618 ONIBUS, B1621 ONIBUS | IVECO: NOVO STRALIS, STRALIS | MERCEDES: 1518, 1525, 1620, 1718, 1725, 1938S, 1944S, ATEGO1418, ATEGO1718, ATEGO1725, ATEGO2425, L1620, L1622, L2325, L2635, L2638, LB2325, LK2325, LK2638, LS1625, LS1630, LS1632, LS1634, LS1929 (FASE II), LS1932, LS1933, LS1934, LS1935, LS1938, LS1941, LS2635, LS2638, O370, O370 R, O370 RS, O370 RSD, O371 R, O371 RS, O371 RSD, O371 RSE, O371 RSL, O371 U, O371 UP, O400, O400 RS, O400 RSD, O400 RSE, O400 RSL, O400 UP, O500, O500 M, O500 R, O500 U, OF1218, OF1319, OF1417, OF1418, OF1618, OF1620, OF1620 PLUS, OF1721, OF1722, OH1421 L, OH1621 L, OH1625, OH1625 L, OH1628 L, OH1635 L | VW: 15.180E OD MWM EURO 3, 15.180EOD, 15.190E OD MWM EURO 3, 15.190EOD, 16.180CO, 16.210CO, 17.180 CUMMINS EURO 3, 17.180 MWM EURO 3, 17.210, 17.210 OD C/DIR.A DIREITA, 17.210E OD, 17.210E OD MWM EURO 3, 17.210OD, 17.220, 17.220 CUMMINS EURO 3, 17.220 MWM EURO 3, 17.2400T, 17.250E, 17.260EOT, 17.300, 17.310, 18.310, 18.310OT, 18.320EOT, 23.210, 23.220, 23.250E, 23.310, 24.220, 24.220 CUMMINS EURO 3, 24.220 MWM EURO 3, 24.250, 24.250 CHILE, 24.250E, 26.220, 26.260, 26.260E, 26.300, 26.310, 31.260, 31.260E, 31.310, 40.300, 40.300 LEITO



WABCO: 24872

NTI: 024872 | ZF: 24872

HASTE SERVO SHIFT (MENOR)  
HASTE SERVO SHIFT (MENOR)  
CLUTCH SERVO SHIFT SHAFT (SMAL) TYPE



SERVO SHIFT ZF  
SERVO SHIFT ZF  
CLUTCH SERVO SHIFT ZF TYPE



DIVERSOS: - | IVECO: STRALIS | MAN: TGX | RENAULT: PREMIUM | VW: 17.280, 19.330, 19.370, 24.280, 25.370, 31.330, 31.370E

WABCO: 9701509232 JB

NTI: 026083 | WABCO: 9701509232 JB

JG. BOBINAS SERVO ACTROS  
JG. BOBINAS SERVO ACTROS  
SERVO ACTROS COIL SET



SERVO EMBR. MOD. ELETRONICO ACTROS/  
AXOR  
SERVO DE EMBRAGUE =ACTROS=  
CLUTCH SERVO =ACTROS=



MERCEDES: ACTROS 2546, ACTROS 2646, ACTROS 2655, ACTROS 4844, ACTROS TODOS COM CAMBIO AUTOMATICO, ATEGO TODOS COM CAMBIO AUTOMATICO, ATRON TODOS COM CAMBIO AUTOMATICO, AXOR TODOS COM CAMBIO AUTOMATICO

WABCO: 8995061502

NTI: 007719 | WABCO: 8995061502

PISTAO MENOR SERVO EMBREAGEM -  
WABCO  
PISTON  
CLUTCH SERVO PISTON



SERVO EMBR. 110MM TIPO WABCO  
SERVO EMBRAGUE 110MM  
CLUTCH SERVO 110M WABCO



FORD: 1722E 4X2, 1730, 1730 ARG., 2422, 2422E 6X2, 2425, 2428E 6X2, 2622, 2622E 6X4, 2626, 2628E 6X4, 2630, 2631, 2632E 6X4, 2831, 2932E 6X4, 3222, 3224, 4030, 4031, 4331, 4432E 4X2, 4532E/1832E, 5031, 5032E 6X4, 6332E 6X4, B1618 ONIBUS, B1621 ONIBUS | IVECO: NOVO STRALIS | MERCEDES: 1518, 1525, 1620, 1718, 1725, 1938S, 1944S, ATEGO1418, ATEGO1718, ATEGO1725, ATEGO2425, L1620, L1622, L2325, L2635, L2638, LB2325, LK2325, LK2638, LS1625, LS1630, LS1632, LS1634, LS1929 (FASE II), LS1932, LS1933, LS1934, LS1935, LS1938, LS1940, LS1941, LS2635, LS2638, O370, O370 R, O370 RS, O370 RSD, O371 R, O371 RS, O371 RSD, O371 RSE, O371 RSL, O371 U, O371 UP, O400, O400 RS, O400 RSD, O400 RSE, O400 RSL, O400 UP, O500, O500 M, O500 R, O500 U, OF1218, OF1319, OF1417, OF1418, OF1618, OF1620, OF1620 PLUS, OF1721, OF1722, OH1421 L, OH1621 L, OH1625, OH1625 L, OH1628 L, OH1635 L | VW: 15.180, 15.180E OD MWM EURO 3, 15.180EOD, 15.190E OD MWM EURO 3, 15.190EOD, 16.180CO, 16.210CO, 17.180 CUMMINS EURO 3, 17.180 MWM EURO 3, 17.210, 17.210 OD C/DIR.A DIREITA, 17.210E OD, 17.210OD, 17.220, 17.220 CUMMINS EURO 3, 17.220 MWM EURO 3, 17.240OT, 17.250E, 17.260EOT, 17.300, 17.310, 18.310, 18.310OT, 18.320EOT, 23.210, 23.220, 23.250E, 23.310, 24.220, 24.220 CUMMINS EURO 3, 24.220 MWM EURO 3, 24.250, 24.250 CHILE, 24.250E, 26.220, 26.260, 26.260E, 26.300, 26.310, 31.260, 31.260E, 31.310, 40.300, 40.300 LEITO

WABCO: 9700510494

NTI: 024689 | WABCO: 9700510494

PROTECTOR DESCARGA  
PROTECTOR DESCARGA  
DISCHARGE PROTECTION



SERVO EMBR. =LONGO=  
SERVO EMBRAGUE  
CLUTCH SERVO (LONG)



MERCEDES: 1938S, 1944S, 2638B, 2638S, ATEGO1729, ATEGO2429, ATRON 2729, AXOR1933, AXOR2036, AXOR2041, AXOR2533, AXOR2536, AXOR2541, AXOR2544, AXOR2641, AXOR2644, AXOR2831, AXOR3341, AXOR3344, AXOR4141, AXOR4144, O500 RSD

WABCO: 9700519562 P

NTI: 007179 | NTI: 022693 | WABCO: 9700519062 P, 9700519542 P, 9700519562 P

REP. SERVO EMBR. =PARCIAL= TP. WABCO  
KIT REPARACION SERVO DE EMBRAGUE =  
PARTIAL=  
CLUTCH SERVO REPAIR KIT WABCO  
(PARTIAL)

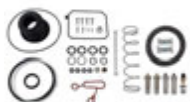


SERVO EMBR. S/ IND. DESGASTE  
SERVO EMBRAGUE  
CLUTCH SERVO (NO ABLATION INDICATOR)



FORD: 1722E 4X2, 1730, 1730 ARG., 2422, 2422E 6X2, 2425, 2428E 6X2, 2622, 2622E 6X4, 2626, 2628E 6X4, 2630, 2631, 2632E 6X4, 2831, 2932E 6X4, 3222, 3224, 4030, 4031, 4331, 4432E 4X2, 4532E/1832E, 5031, 5032E 6X4, 6332E 6X4, B1618 ONIBUS, B1621 ONIBUS | IVECO: NOVO STRALIS, STRALIS | MERCEDES: 1518, 1525, 1620, 1718, 1725, 1938S, 1944S, ATEGO1418, ATEGO1718, ATEGO1725, ATEGO2425, L1620, L1622, L2325, L2635, L2638, LB2325, LK2325, LK2638, LS1625, LS1630, LS1632, LS1634, LS1929 (FASE II), LS1932, LS1933, LS1934, LS1935, LS1938, LS1941, LS2635, LS2638, O370, O370 R, O370 RS, O370 RSD, O371 R, O371 RS, O371 RSD, O371 RSE, O371 RSL, O371 U, O371 UP, O400, O400 RS, O400 RSD, O400 RSE, O400 RSL, O400 UP, O500, O500 M, O500 R, O500 U, OF1218, OF1319, OF1417, OF1418, OF1618, OF1620, OF1620 PLUS, OF1721, OF1722, OH1421 L, OH1621 L, OH1625, OH1625 L, OH1628 L, OH1635 L | VW: 15.180E OD MWM EURO 3, 15.180EOD, 15.190E OD MWM EURO 3, 15.190EOD, 16.180CO, 16.210CO, 17.180 CUMMINS EURO 3, 17.180 MWM EURO 3, 17.210, 17.210 OD C/DIR.A DIREITA, 17.210E OD, 17.210OD, 17.220, 17.220 CUMMINS EURO 3, 17.220 MWM EURO 3, 17.240OT, 17.250E, 17.260EOT, 17.300, 17.310, 18.310, 18.310OT, 18.320EOT, 23.210, 23.220, 23.250E, 23.310, 24.220, 24.220 CUMMINS EURO 3, 24.220 MWM EURO 3, 24.250, 24.250 CHILE, 24.250E, 26.220, 26.260, 26.260E, 26.300, 26.310, 31.260, 31.260E, 31.310, 40.300, 40.300 LEITO

**WABCO: 9700510010 CN** | NTI: 023811 | NTI: 018675, 022910 | WABCO: 9700510010 CN



REP. SERVO EMBR. ACTROS  
KIT REP. SERVO EMBRAGUE ACTROS  
REPAIR KIT CLUTCH SERVO ACTROS



SERVO EMBR. MOD. ELETRONICO ACTROS/  
AXOR  
SERVO DE EMBRAGUE =ACTROS=  
CLUTCH SERVO =ACTROS=

MERCEDES: ACTROS 2546, ACTROS 2646, ACTROS 2655, ACTROS 4844, ACTROS TODOS COM CAMBIO AUTOMATICO, ATEGO TODOS COM CAMBIO AUTOMATICO, ATRON TODOS COM CAMBIO AUTOMATICO, AXOR TODOS COM CAMBIO AUTOMATICO

**WABCO: 9700510010 P** | NTI: 019350 | NTI: 022911 | WABCO: 9700510010 P, 9701500010 P, 9701509232 P



REP. SERVO EMBR. ACTROS =PARCIAL=  
KIT REP. SERVO EMBRAGUE ACTROS  
REPAIR KIT CLUTCH SERVO ACTROS  
PARTIAL



SERVO EMBR. MOD. ELETRONICO ACTROS/  
AXOR  
SERVO DE EMBRAGUE =ACTROS=  
CLUTCH SERVO =ACTROS=

MERCEDES: ACTROS 2546, ACTROS 2646, ACTROS 2655, ACTROS 4844, ACTROS TODOS COM CAMBIO AUTOMATICO, ATEGO TODOS COM CAMBIO AUTOMATICO, ATRON TODOS COM CAMBIO AUTOMATICO, AXOR TODOS COM CAMBIO AUTOMATICO

**WABCO: 9700511202** | NTI: 016060 | NTI: 024758 | WABCO: 9700511202



REP. SERVO EMBR. CANECA LONGA WABCO  
REP. SERVO EMBR. CANECA LONGA WABCO  
CLUTCH SERVO REPAIR KIT WABCO LOMG  
HOUSING



SERVO EMBR. CANECA LONGA =WABCO=  
SERVO DE EMBRAGUE CARCAZA LONGA  
WABCO  
CLUTCH SERVO LONG HOUSING WABCO

VW: 15.180EOD, 15.190EOD, 16.270CO, 17.210E OD, 17.240CO, 17.260CO

**WABCO: 9700512282** | NTI: 018559 | WABCO: 9700512282



REP. SERVO EMBR. CANECA LONGA WABCO  
(COM 3/2 VIAS)  
REP. SERVO EMBR. CANECA LONGA WABCO  
(COM 3/2 VIAS)  
CLUTCH SERVO REPAIR KIT WABCO



SERVO EMBR. CANECA LONGA =WABCO=  
SERVO DE EMBRAGUE CARCAZA LONGA  
WABCO  
CLUTCH SERVO LONG HOUSING WABCO

VW: 15.180EOD, 15.190EOD, 16.270CO, 17.210E OD, 17.240CO, 17.260CO

**WABCO: 9700519172** | NTI: 007776 | NTI: 022692 | WABCO: 9700519172



REP. SERVO EMBR. MBB 0500  
KIT REPARACION SERVO DE EMBRAGUE  
MB 0500  
CLUTCH SERVO REPAIR KIT MBB O 500



SERVO EMBR. O-500 TIPO WABCO  
SERVO EMBR. O-500 TIPO WABCO  
CLUTCH SERVO O-500 WABCO

MERCEDES: O500 M, OF1417, OF1418, OF1721, OF1722

**WABCO: 9700519742 P** | NTI: 007424 | NTI: 022694 | WABCO: 9700519742 P



REP. SERVO EMBR. PARCIAL 1944/2638  
WABCO  
KIT REPARACION SERVO DE EMBRAGUE  
(PARTIAL) WABCO  
CLUTCH SERVO REPAIR KIT 1944/2638  
(PARTIAL) WABCO



SERVO EMBR. =LONGO=  
SERVO EMBRAGUE  
CLUTCH SERVO (LONG)

MERCEDES: 1938S, 1944S, 2638B, 2638S, ATEGO1729, ATEGO2429, ATRON 2729, AXOR1933, AXOR2036, AXOR2041, AXOR2533, AXOR2536, AXOR2541, AXOR2544, AXOR2641, AXOR2644, AXOR2831, AXOR3341, AXOR3344, AXOR4141, AXOR4144, O500 RSD



WABCO: 9700519742 PG

NTI: 007461 | NTI: 022726 | WABCO: 9700519742 PG



REP. SERVO EMBR. PARCIAL 1944/2638  
WABCO  
KIT REPARACION SERVO DE EMBRAGUE =  
WABCO=  
CLUTCH SERVO REPAIR KIT 1944/2638  
(PARTIAL) WABCO



SERVO EMBR. =LONGO=  
SERVO EMBRAGUE  
CLUTCH SERVO (LONG)

MERCEDES: 1938S, 1944S, 2638B, 2638S, ATEGO1729, ATEGO2429, ATRON 2729, AXOR1933, AXOR2036, AXOR2041, AXOR2533, AXOR2536, AXOR2541, AXOR2544, AXOR2641, AXOR2644, AXOR2831, AXOR3341, AXOR3344, AXOR4141, AXOR4144, 0500 RSD

WABCO: 9700519062 PG

NTI: 007187 | NTI: 022711 | WABCO: 9700519062 PG, 9700519562 PG



REP. SERVO EMBR. PARCIAL S/EMBOLO =  
WABCO=  
KIT REPARACION SERVO DE EMBRAGUE  
CLUTCH SERVO REPAIR KIT (NO PISTON)  
WABCO



SERVO EMBR. 110MM TIPO WABCO  
SERVO EMBRAGUE 110MM  
CLUTCH SERVO 110M WABCO

FORD: 1722E 4X2, 1730 ARG., 2422, 2422E 6X2, 2425, 2428E 6X2, 2622, 2622E 6X4, 2626, 2628E 6X4, 2630, 2631, 2632E 6X4, 2831, 2932E 6X4, 4030, 4031, 4331, 4432E 4X2, 4532E/1832E, 5031, 5032E 6X4, 6332E 6X4, B1618 ONIBUS, B1621 ONIBUS | MERCEDES: 1518, 1525, 1620, 1718, 1725, 1938S, 1944S, ATEGO1418, ATEGO1718, ATEGO1725, ATEGO2425, L1620, L1622, L2325, L2635, L2638, LB2325, LK2325, LK2638, LS1625, LS1630, LS1632, LS1634, LS1929 (FASE II), LS1932, LS1933, LS1934, LS1935, LS1938, LS1941, LS2635, LS2638, O370, O370 R, O370 RS, O370 RSD, O371 R, O371 RS, O371 RSD, O371 RSE, O371 RSL, O371 U, O371 UP, O400, O400 RS, O400 RSD, O400 RSE, O400 RSL, O400 UP, O500, O500 M, O500 R, O500 U, OF1218, OF1319, OF1417, OF1418, OF1618, OF1620, OF1620 PLUS, OF1721, OF1722, OH1421 L, OH1621 L, OH1625, OH1625 L, OH1628 L, OH1635 L | VW: 15.180E OD MWM EURO 3, 15.180EOD, 15.190E OD MWM EURO 3, 15.190EOD, 16.180CO, 16.210CO, 17.180 CUMMINS EURO 3, 17.180 MWM EURO 3, 17.210, 17.210 OD C/DIR.A DIREITA, 17.210E OD, 17.210OD, 17.220, 17.220 CUMMINS EURO 3, 17.220 MWM EURO 3, 17.240OT, 17.250E, 17.260EOT, 17.300, 17.310, 18.310, 18.310OT, 18.320EOT, 23.210, 23.220, 23.250E, 23.310, 24.220, 24.220 CUMMINS EURO 3, 24.220 MWM EURO 3, 24.250, 24.250 CHILE, 24.250E, 26.220, 26.260, 26.260E, 26.300, 26.310, 31.260, 31.260E, 31.310, 40.300, 40.300 LEITO

WABCO: 9700519562

NTI: 004110 | NTI: 006450 | WABCO: 9700519562



REP. SERVO EMBR. TP. WABCO  
REPARO SERVO EMBRAGUE - WABCO  
CLUTCH SERVO REPAIR KIT WABCO



SERVO EMBR. S/ IND. DESGASTE  
SERVO EMBRAGUE  
CLUTCH SERVO (NO ABLATION INDICATOR)

FORD: 1722E 4X2, 1730, 1730 ARG., 2422, 2422E 6X2, 2425, 2428E 6X2, 2622, 2622E 6X4, 2626, 2628E 6X4, 2630, 2631, 2632E 6X4, 2831, 2932E 6X4, 3222, 3224, 4030, 4031, 4331, 4432E 4X2, 4532E/1832E, 5031, 5032E 6X4, 6332E 6X4, B1618 ONIBUS, B1621 ONIBUS | IVECO: NOVO STRALIS, STRALIS | MERCEDES: 1518, 1525, 1620, 1718, 1725, 1938S, 1944S, ATEGO1418, ATEGO1718, ATEGO1725, ATEGO2425, L1620, L1622, L2325, L2635, L2638, LB2325, LK2325, LK2638, LS1625, LS1630, LS1632, LS1634, LS1929 (FASE II), LS1932, LS1933, LS1934, LS1935, LS1938, LS1941, LS2635, LS2638, O370, O370 R, O370 RS, O370 RSD, O371 R, O371 RS, O371 RSE, O371 RSL, O371 U, O371 UP, O400, O400 RS, O400 RSD, O400 RSE, O400 RSL, O400 UP, O500, O500 M, O500 R, O500 U, OF1218, OF1319, OF1417, OF1418, OF1618, OF1620, OF1620 PLUS, OF1721, OF1722, OH1421 L, OH1621 L, OH1625, OH1625 L, OH1628 L, OH1635 L | VW: 15.180E OD MWM EURO 3, 15.180EOD, 15.190E OD MWM EURO 3, 15.190EOD, 16.180CO, 16.210CO, 17.180 CUMMINS EURO 3, 17.180 MWM EURO 3, 17.210, 17.210 OD C/DIR.A DIREITA, 17.210E OD, 17.210E OD MWM EURO 3, 17.210OD, 17.220, 17.220 CUMMINS EURO 3, 17.220 MWM EURO 3, 17.240OT, 17.250E, 17.260EOT, 17.300, 17.310, 18.310, 18.310OT, 18.320EOT, 23.210, 23.220, 23.250E, 23.310, 24.220, 24.220 CUMMINS EURO 3, 24.220 MWM EURO 3, 24.250, 24.250 CHILE, 24.250E, 26.220, 26.260, 26.260E, 26.300, 26.310, 31.260, 31.260E, 31.310, 40.300, 40.300 LEITO

WABCO: 9700519952

NTI: 018364 | WABCO: 9700519952



REP. SERVO EMBR. TP. WABCO (C.  
SUORTE)  
REPARO SERVO EMBRAGUE - WABCO  
CLUTCH SERVO REPAIR KIT WABCO



SERVO EMBR. IVECO N. STRALIS 410/460 =  
HASTE CURTA=  
SERVO EMBRAGUE IVECO NUEVO STRALIS  
CLUTCH SERVO IVECO STRALIS 410/460

IVECO: NOVO STRALIS, NOVO TRAKKER

**WABCO: 9700519542**

NTI: 004109 | NTI: 003027, 004111, 006290, 022059, 022617 | WABCO: 9700519062, 9700519542, 9700519552, 9700519832


 REP. SERVO EMBR. TP. WABCO ( COM  
SUPORTE)  
REPARO SERVO EMBRAGUE - WABCO  
CLUTCH SERVO REPAIR KIT WABCO

 SERVO EMBR. 110MM TIPO WABCO  
SERVO EMBRAGUE 110MM  
CLUTCH SERVO 110M WABCO

FORD: 1722E 4X2, 1730, 1730 ARG., 2422, 2422E 6X2, 2425, 2428E 6X2, 2622, 2622E 6X4, 2626, 2628E 6X4, 2630, 2631, 2632E 6X4, 2831, 2932E 6X4, 4030, 4031, 4331, 4432E 4X2, 4532E/1832E, 5031, 5032E 6X4, 6332E 6X4, B1618 ONIBUS, B1621 ONIBUS | MERCEDES: 1518, 1525, 1620, 1718, 1725, 1938S, 1944S, ATEGO1418, ATEGO1718, ATEGO1725, ATEGO2425, L1620, L1622, L2325, L2635, L2638, LB2325, LK2325, LK2638, LS1625, LS1630, LS1632, LS1634, LS1929 (FASE II), LS1932, LS1933, LS1934, LS1935, LS1938, LS1941, LS2635, LS2638, O370, O370 R, O370 RS, O370 RSD, O371 R, O371 RS, O371 RSD, O371 RSE, O371 RSL, O371 U, O371 UP, O400, O400 RS, O400 RSD, O400 RSE, O400 RSL, O400 UP, O500, O500 M, O500 R, O500 U, OF1218, OF1319, OF1417, OF1418, OF1618, OF1620, OF1620 PLUS, OF1721, OF1722, OH1421 L, OH1621 L, OH1625, OH1625 L, OH1628 L, OH1635 L | SCANIA: R113, T113 | VW: 15.180E OD MWM EURO 3, 15.180EOD, 15.190E OD MWM EURO 3, 15.190EOD, 16.180CO, 16.210CO, 17.180 CUMMINS EURO 3, 17.180 MWM EURO 3, 17.210, 17.210 OD C/DIR.A DIREITA, 17.210E OD, 17.210OD, 17.220, 17.220 CUMMINS EURO 3, 17.220 MWM EURO 3, 17.240OT, 17.250E, 17.260EOT, 17.300, 17.310, 18.310, 18.310OT, 18.320EOT, 23.210, 23.220, 23.250E, 23.310, 24.220, 24.220 CUMMINS EURO 3, 24.220 MWM EURO 3, 24.250, 24.250 CHILE, 24.250E, 26.220, 26.260, 26.260E, 26.300, 26.310, 31.260, 31.260E, 31.310, 40.300, 40.300 LEITO

**WABCO: 9700519742**

NTI: 007423 | NTI: 022695 | WABCO: 9700519742


 REP. SERVO EMBR.COMPL.1944/2638 =  
WABCO=(C SUPORTE)  
KIT REPARACION SERVO DE EMBRAGUE  
WABCO  
CLUTCH SERVO REPAIR KIT 1944/2638  
WABCO

 SERVO EMBR. =LONGO=  
SERVO EMBRAGUE  
CLUTCH SERVO (LONG)

MERCEDES: 1938S, 1944S, 2638B, 2638S, ATEGO1729, ATEGO2429, ATRON 2729, AXOR1933, AXOR2036, AXOR2041, AXOR2533, AXOR2536, AXOR2541, AXOR2544, AXOR2641, AXOR2644, AXOR2831, AXOR3341, AXOR3344, AXOR4141, AXOR4144, O500 RSD

**WABCO: 9700518230 R**

NTI: 025662 | WABCO: 9700518230 R


 REP. SERVO EMBR/S JUNTA DA TAMPA  
(WABCO)  
REP. SERVO EMBR/S JUNTA DA TAMPA  
(WABCO)  
CLUTCH SERVO REP. KIT W/O COVER  
GASKET (WABCO TYP)

 SERVO EMBR. =MODELO WABCO=  
SERVO EMBR. =MODELO WABCO=  
SERVO EMBR. =MODELO WABCO=

VOLVO: FH12, FH16, FM12, NH12

**WABCO: 9700516420 XA**

NTI: 025434 | NTI: 026034 | WABCO: 9700516420 XA, 9700519702 XA


 REPARO SERVO MAN =C/TAMPA=  
REPARO SERVO MAN =C/TAMPA=  
CLUTCH SERVO MAN W/COVER

 SERVO EMBREAGEM MAN  
SERVO EMBREAGEM MAN  
CLUTCH SERVO MAN REP. KIT W/COVER

DIVERSOS: - | MAN: 10.160 ADVANTECH MAN, 10.160PLUS DELIVERY, 13.190 ADVANTECH MAN, 13.190 WORKER EURO V, 15.190 ADVANTECH MAN, 15.190 OD EURO 5 MAN, 15.190 WORKER EURO V, 17.190 ADVANTCH MAN, 17.190 WORKER EURO V, 17.230 ADVANTECH MAN, 17.230 WORKER EURO V, 17.280 ADVANTECH MAN, 23.230 WORKER EURO V, 23.330 ADVANTECH MAN, 24.280 ADVANTECH MAN, 26.280 ADVANTECH MAN, 31.280 ADVANTECH MAN, 5.150 ADVANTECH MAN, 5.150 OD, 8.160 ADVANTECH MAN, 8.160 DELIVERY, 8.160 OD, 9.160 ADVANTECH MAN, 9.160 DELIVERY, 9.160 OD

**WABCO: 9700516420 X**

NTI: 025011 | NTI: 026033 | WABCO: 9700516420 X, 9700519702 X


 REPARO SERVO MAN =S/TAMPA=  
REPARO SERVO MAN =S/TAMPA=  
CLUTCH SERVO REP. KIT W/O COVER FOR  
MAN

 SERVO EMBREAGEM MAN  
SERVO EMBREAGEM MAN  
CLUTCH SERVO MAN REP. KIT W/COVER

MAN: 10.160 ADVANTECH MAN, 10.160PLUS DELIVERY, 13.190 ADVANTECH MAN, 13.190 WORKER EURO V, 15.190 ADVANTECH MAN, 15.190 OD EURO 5 MAN, 15.190 WORKER EURO V, 17.190 ADVANTCH MAN, 17.190 WORKER EURO V, 17.230 ADVANTECH MAN, 17.230 WORKER EURO V, 17.280 ADVANTECH MAN, 23.230 WORKER EURO V, 23.330 ADVANTECH MAN, 24.280 ADVANTECH MAN, 26.280 ADVANTECH MAN, 31.280 ADVANTECH MAN, 5.150 ADVANTECH MAN, 5.150 OD, 8.160 ADVANTECH MAN, 8.160 DELIVERY, 8.160 OD, 9.160 ADVANTECH MAN, 9.160 DELIVERY, 9.160 OD





WABCO: 8913505204

NTI: 011006 | NTI: 023010 | WABCO: 8913505204



SANGRADOR SERVO EMBREAGEM =  
WABCO=  
TORNILLO ALIVIADERO DEL SERVO  
EMBRAGUE  
CLUTCH SERVO WABCO TYPE 110MM BLEED  
SCREW



SERVO EMBR. 110MM TIPO WABCO  
SERVO EMBRAGUE 110MM  
CLUTCH SERVO 110M WABCO

FORD: 1722E 4X2, 1730, 1730 ARG., 2422, 2422E 6X2, 2425, 2428E 6X2, 2622, 2622E 6X4, 2626, 2628E 6X4, 2630, 2631, 2632E 6X4, 2831, 2932E 6X4, 3222, 3224, 4030, 4031, 4331, 4432E 4X2, 4532E/1832E, 5031, 5032E 6X4, 6332E 6X4, B1618 ONIBUS, B1621 ONIBUS | MERCEDES: 1518, 1525, 1620, 1718, 1725, 1938S, 1944S, ATEGO1418, ATEGO1718, ATEGO1725, ATEGO2425, L1620, L1622, L2325, L2635, L2638, LB2325, LK2325, LK2638, LS1625, LS1630, LS1632, LS1634, LS1929 (FASE II), LS1932, LS1933, LS1934, LS1935, LS1938, LS1941, LS2635, LS2638, O370, O370 R, O370 RS, O370 RSD, O371 R, O371 RS, O371 RSD, O371 RSE, O371 RSL, O371 U, O371 UP, O400, O400 RS, O400 RSD, O400 RSE, O400 RSL, O400 UP, O500, O500 M, O500 R, O500 U, OF1218, OF1319, OF1417, OF1418, OF1618, OF1620, OF1620 PLUS, OF1721, OF1722, OH1421 L, OH1621 L, OH1625, OH1625 L, OH1628 L, OH1635 L | VW: 15.180E OD MWM EURO 3, 15.180EOD, 15.190E OD MWM EURO 3, 15.190EOD, 16.180CO, 16.210CO, 17.180 CUMMINS EURO 3, 17.180 MWM EURO 3, 17.210, 17.210 OD C/DIREITA, 17.210E OD, 17.210OD, 17.220, 17.220 CUMMINS EURO 3, 17.220 MWM EURO 3, 17.240OT, 17.250E, 17.260EOT, 17.300, 17.310, 18.310, 18.310OT, 18.320EOT, 23.210, 23.220, 23.250E, 23.310, 24.220, 24.220 CUMMINS EURO 3, 24.220 MWM EURO 3, 24.250, 24.250 CHILE, 24.250E, 26.220, 26.260, 26.260E, 26.300, 26.310, 31.260, 31.260E, 31.310, 40.300, 40.300 LEITO

WABCO: 4411005392

NTI: 018154 | WABCO: 4411005392



SENSOR SERVO EMBR. WABCO 1938/1944/  
2638/AXOR2036  
SENSOR SERVO EMBR. WABCO 1938/1944/  
2638/AXOR2036  
SENSOR CLUTCH SERVO WABCO 1938



SERVO EMBR. =LONGO=  
SERVO EMBRAGUE  
CLUTCH SERVO (LONG)

MERCEDES: 1938S, 1944S, 2638B, 2638S, ATEGO1729, ATEGO2429, ATRON 2729, AXOR1933, AXOR2036, AXOR2041, AXOR2533, AXOR2536, AXOR2541, AXOR2544, AXOR2641, AXOR2644, AXOR2831, AXOR3341, AXOR3344, AXOR4141, AXOR4144, O500 RSD

WABCO: 9700513554

NTI: 018642 | WABCO: 9700513554



SUPORTE EMBOLO SERVO EMBREAGEM  
SUPORTE EMBOLO SERVO EMBRAGUE  
BRACKET PISTON CLUTCH SERVO



SERVO EMBR. CARCAÇA LONGA TP WABCO  
SERVO EMBRAGUE  
CLUTCH SERVO LONG HOUSING WABCO

IVECO: NOVO STRALIS | MERCEDES: 1938S, 1944S, 2638S, ATEGO1729, ATEGO2429, ATRON 2729, AXOR1933, AXOR2036, AXOR2533, AXOR2831, AXOR3341, AXOR3344, AXOR4141, AXOR4144, L2638, LK2638, LS1938, LS2638, O371 RS, O371 RSD, O371 SRE, O400, O400 RS, O400 RSD, O400 RSE, O400 RSL, O400 UP, O500 RSD, OH1625 L, OH1628 L, OH1635 L

WABCO: 9700511000 T

NTI: 018824 | NTI: 022912 | WABCO: 9700511000 T, 9709020174 T



TAMPA SERVO EMBR. CANECA LONGA =  
WABCO=  
TAPA SERVO DE EMBRAGUE CARCAZA  
LONGA WABCO  
CLUTCH SERVO COVER LONG HOUSING  
WABCO



SERVO EMBR. CANECA LONGA =WABCO=  
SERVO DE EMBRAGUE CARCAZA LONGA  
WABCO  
CLUTCH SERVO LONG HOUSING WABCO

VW: 15.180EOD, 15.190EOD, 16.270CO, 17.210E OD, 17.240CO, 17.260CO

WABCO: 9700510010

NTI: 019441 | NTI: 022551 | WABCO: 9700510010, 9701500010



SERVO EMBR. MOD. ELETRONICO ACTROS/  
AXOR  
SERVO DE EMBRAGUE =ACTROS=  
CLUTCH SERVO =ACTROS=

DIVERSOS: - | MERCEDES: ACTROS 2546, ACTROS 2646, ACTROS 2655, ACTROS 4844, ACTROS TODOS COM CAMBIO AUTOMATICO, ATEGO TODOS COM CAMBIO AUTOMATICO, ATRON TODOS COM CAMBIO AUTOMATICO, AXOR TODOS COM CAMBIO AUTOMATICO

KNORR: K033411

NTI: 019631 | KNORR: K033411 | NTI: 022255



CIL. ACION.EMBR.36MM.CONSTEL.HASTE LONGA  
 CILINDRO DE EMBRAGUE 36MM  
 CONSTELLATION  
 CLUTCH CYLINDER 36MM CONSTELLATION

VW: 13.180E CONSTELLATION, 15.180E CONSTELLATION, 17.250E CONSTELLATION, 24.250ECONSTELLATION

KNORR: 0022951607

NTI: 024356 | MERCEDES: 0022951607 | NTI: 024357



CIL. ACION.EMBR.ACCELO 712/715  
 CIL. ACION.EMBR.ACCELO 712/715  
 CLUTCH CYLINDER ACCELO 712/715

MERCEDES: 712, ACCELO715C

KNORR: K033409

NTI: 018730 | KNORR: K033409 | NTI: 018861



CIL. ACION.EMBR.DIAM.36MM.COSTEL.HASTE CURTA  
 CILINDRO EMBRAGUE 36MM  
 CONSTELLATION  
 CLUTCH CYLINDER 36MM CONSTELLATION



HASTE ACION. CIL. 143X12 CURTA  
 HASTE ACION. CIL. 143X12 CURTA  
 ROD 143 X 12

VW: 17.320E CONSTELLATION, 19.320E CONSTELLATION, 19.370 CONSTELLATION, 24.320ECONSTELLATION, 25.320 CONSTELLATION, 25.370E CONSTELLATION, 26.260 CONSTELLATION, 31.260 CONSTELLATION, 31.320E CONSTELLATION, 31.370E CONSTELLATION

KNORR: 523670

NTI: 001730 | NTI: 003516, 022585 | SCANIA: 1112542, 204525, 363808, 523669, 523670



CIL. ACION.FREIO MOTOR 111/2  
 CILINDRO FRENO MOTOR 111/2  
 ENGINE BRAKE CYLINDER 111/2

SCANIA: 111, F112, K112, LK140, LK141, R112, R142, T112, T142

KNORR: K043961

NTI: 019620 | KNORR: K043961 | NTI: 019621



CIL. EMBR. C/ RESERV. =FORD=  
 CILINDRO DE EMBRAGUE =FORD=  
 CLUTCH CYLINDER W/ RESERVOIR -FORD-

FORD: 1317 4X2, 1419 4X2, 1517 4X2, 1519 4X2, 1717 4X2, 1719 4X2, 1722 4X2, 1723 4X2, 1729 4X2, 1932 4X2, 1933 4X2, 2422 6X2, 2423 6X2, 2428 6X2, 2429 6X2, 2622 6X4, 2623 6X4, 2628 6X4, 2629 6X4, 2632 6X4, 3132 6X4, 3133 6X4

KNORR: K032123

NTI: 027944 | KNORR: K032123 | NTI: 027945



CIL. MESTRE EMBREAGEM  
 CILINDRO EMBRAGUE FH  
 CLUTCH MASTER CYLINDER FH4/FM4

VOLVO: FH4, FM4





KNORR: K0112700061

NTI: 018826 | KNORR: K0112700061



REP. CIL. EMBREAGEM CONSTELLATION=  
34MM  
REP. CIL. EMBREAGEM CONSTELLATION=  
34MM  
CLUTCH CYLINDER REPAIR KIT



CIL. ACION.EMBR.DIAM.36MM.COSTEL.HASTE  
CURTA  
CILINDRO EMBRAGUE 36MM  
CONSTELLATION  
CLUTCH CYLINDER 36MM CONSTELLATION

VW: 17-330 CONSTELLATION ADVANTECH, 17.320E CONSTELLATION, 19-330T CONSTELLATION ADVANTECH, 19-390T CONSTELLATION ADVANTECH,  
19.320E CONSTELLATION, 19.370 CONSTELLATION, 24.320ECONSTELLATION, 25-390T CONSTELLATION ADVANTECH, 25.320 CONSTELLATION, 25.370E CONSTELLATION,  
26-280 CONSTELATIOM ADVANTECH, 26-390T CONSTELLATION ADVANTECH, 26-420T CONSTELLATION ADVANTECH, 26.260 CONSTELLATION,  
31-330 CONSTELLATION ADVANTECH, 31-390 CONSTELLATION ADVANTECH, 31.260 CONSTELLATION, 31.320E CONSTELLATION, 31.370E CONSTELLATION

KNORR: K0112700062

NTI: 018243 | KNORR: K0112700062 | NTI: 021621



REP. CIL. EMBREAGEM CONSTELLATION=  
36MM  
REPARACION CILINDRO DE EMBRAGUE  
CLUTCH CYLINDER REPAIR KIT



CIL. ACION.EMBR.DIAM.36MM.COSTEL.HASTE  
CURTA  
CILINDRO EMBRAGUE 36MM  
CONSTELLATION  
CLUTCH CYLINDER 36MM CONSTELLATION

VW: 17-330 CONSTELLATION ADVANTECH, 17.320E CONSTELLATION, 19-330T CONSTELLATION ADVANTECH, 19-390T CONSTELLATION ADVANTECH,  
19.320E CONSTELLATION, 19.370 CONSTELLATION, 24.320ECONSTELLATION, 25-390T CONSTELLATION ADVANTECH, 25.320 CONSTELLATION, 25.370E CONSTELLATION,  
26-280 CONSTELATIOM ADVANTECH, 26-390T CONSTELLATION ADVANTECH, 26-420T CONSTELLATION ADVANTECH, 26.260 CONSTELLATION,  
31-330 CONSTELLATION ADVANTECH, 31-390 CONSTELLATION ADVANTECH, 31.260 CONSTELLATION, 31.320E CONSTELLATION, 31.370E CONSTELLATION

**KNORR: 41035649**

NTI: 017157 | IVECO: 41035502, 41035647, 41035649, 5802192366, 98420498, 98438178 | NTI: 022563


 SERVO EMBR. N.STRALIS/N.TRAKKER 3  
 ROSCAS =KNORR  
 SERVO DE EMBRAGUE IVECO STRALIS =  
 KNORR=  
 CLUTCH SERVO IVECO STRALIS KNORR

IVECO: CURSOR, EUROCARGO, EUROTECH, EUROTRAKKER, NOVO STRALIS, NOVO TRAKKER, POWERSTAR, STRALIS, TRAKKER

**KNORR: K002173**

NTI: 023733 | KNORR: K002173, VG3286 | NTI: 023861


 SERVO EMBR. STRALIS  
 SERVO EMBR. STRALIS  
 CLUTCH SERVO FOR IVECO STRALIS

IVECO: CURSOR, EUROCARGO, EUROTECH, EUROTRAKKER, NOVO STRALIS, NOVO TRAKKER, POWERSTAR, STRALIS, TRAKKER

**KNORR: 42568691**

NTI: 024573 | IVECO: 42560762, 42561466, 42568691, 42569800 | NTI: 024720, 024880, 027282, 027319, 027320


 SERVO EMBREAGEM =STRALIS=  
 SERVO EMBREAGEM =STRALIS=  
 CLUTCH SERVO IVECO STRALIS

DIVERSOS: - | IVECO: NOVO STRALIS, NOVO TRAKKER | MAN: TGA, TGM

**KNORR: K0107167**

NTI: 027972 | KNORR: K0107167


 SERVO EMBREAGEM VOLVO  
 SERVO EMBREAGEM VOLVO  
 CLUTCH SERVO VOLVO

VOLVO: B12B, B12M, FH, FM

**KNORR: 85117701 V**

NTI: 027973 | VOLVO: 20569775 V, 20583314 V, 22279199 V, 22279233 V, 8171512 V, 85117701 V


 SERVO EMBREAGEM VOLVO  
 SERVO EMBREAGEM VOLVO  
 CLUTCH SERVO VOLVO

VOLVO: B12B, B12M, FH, FM



**KNORR: K036633**

NTI: 018069 | KNORR: K036633 | NTI: 022559, 024302



SERVO MID 83MM =ROSCA M12X1.5=  
SERVO DE EMBRAGUE 83MM  
CLUTCH SERVO 83MM W/ THREAD M12X1,5

VW: 13-190 CONSTELLATION ADVENTECH, 13.180E CONSTELLATION, 15-190 CONSTELLATION ADVANTECH, 15.180E CONSTELLATION, 17-190 CONSTELLATION ADVANTECH, 17-330 CONSTELLATION ADVANTECH, 17.250E CONSTELLATION, 17.320E CONSTELLATION, 19-390T CONSTELLATION ADVANTECH, 19.320E CONSTELLATION, 19.370 CONSTELLATION, 24.250ECONSTELLATION, 24.320ECONSTELLATION, 25-390T CONSTELLATION ADVANTECH, 25.320 CONSTELLATION, 25.370E CONSTELLATION, 26-280 CONSTELATIOM ADVANTECH, 26-390T CONSTELLATION ADVANTECH, 26-420T CONSTELLATION ADVANTECH, 26.260 CONSTELLATION, 31-280 CONSTELLATION ADVANTECH, 31-330 CONSTELLATION ADVANTECH, 31-390 CONSTELLATION ADVANTECH, 31.260 CONSTELLATION, 31.320E CONSTELLATION, 31.370E CONSTELLATION

**KNORR: SM1PLA**

NTI: 022595 | KNORR: K021874, K021874N00, SM1PLA | NTI: 024266



SERVO MID EUROCARGO/TECTOR =KNORR=  
SERVO MID EUROCARGO/TECTOR =KNORR=  
CLUTCH SERVO MID

IVECO: CC118 E20 ONIBUS, CC118 E22 ONIBUS, CC170 E22 ONIBUS, EUROCARGO, TECTOR

**KNORR: K004297 C**

NTI: 016533 | KNORR: K004297 C



CIL. SERVO EMBR. STRALIS =KNORR=  
CIL. SERVO EMBR. STRALIS =KNORR=  
CLUTCH SERVO HOUSING STRALIS KNORR



SERVO EMBR. N.STRALIS/N.TRAKKER 3  
ROSCAS =KNORR  
SERVO DE EMBRAGUE IVECO STRALIS =  
KNORR=  
CLUTCH SERVO IVECO STRALIS KNORR

IVECO: CURSOR, EUROCARGO, EUROTECH, EUROTRAKKER, NOVO STRALIS, NOVO TRAKKER, POWERSTAR, STRALIS, TRAKKER

**KNORR: K013727 P**

NTI: 024643 | KNORR: K013727 P | NTI: 024644



REP. SERVO EMBR. AUTOM. C/BOBINA =  
PARCIAL=  
REP. SERVO EMBR. AUTOM. C/BOBINA =  
PARCIAL=  
CLUTCH SERVO PARTIAL REP.KIT FOR  
AUTOMATIC GEARBOX



SERVO EMBREAGEM =STRALIS=  
SERVO EMBREAGEM =STRALIS=  
CLUTCH SERVO IVECO STRALIS

IVECO: NOVO STRALIS, NOVO TRAKKER | MAN: TGA, TGM

**KNORR: K013727**

NTI: 024551 | KNORR: K013727 | NTI: 024552



REP. SERVO EMBR. AUTOMATICO  
REP. SERVO EMBR. AUTOMATICO  
CLUTCH SERVO REP. KIT FOR AUTOMATIC  
GEARBOX IVECO



SERVO EMBREAGEM =STRALIS=  
SERVO EMBREAGEM =STRALIS=  
CLUTCH SERVO IVECO STRALIS

IVECO: NOVO STRALIS, NOVO TRAKKER | MAN: TGA, TGM

**KNORR: 42536490**

NTI: 024690 | IVECO: 42536490 | NTI: 024691



REP. SERVO EMBR. C/BOBINA KNORR  
REP. SERVO EMBR. C/BOBINA KNORR  
CLUTCH SERVO REPAIR KIT WITH COIL  
KNORR TYPE



SERVO EMBREAGEM =STRALIS=  
SERVO EMBREAGEM =STRALIS=  
CLUTCH SERVO IVECO STRALIS

IVECO: NOVO STRALIS, NOVO TRAKKER

**KNORR: II35696008 AP**

NTI: 027211 | KNORR: II35696008 AP



REP. SERVO EMBR. CARCAZA ALUMINIO  
KNORR  
KIT REP. SERVO EMBRAGUE CARCAZA DE  
ALUMINIUM  
REPAIR KIT CLUTCH SERVO ALUMINIUM  
HOUSING



SERVO EMBREAGEM STRALIS  
SERVO EMBREAGEM STRALIS  
CLUTCH SERVO IVECO STRALIS

IVECO: CURSOR, EUROCARGO, EUROTECH, EUROTRAKKER, NOVO STRALIS, NOVO TRAKKER, POWERSTAR, STRALIS, TRAKKER

**KNORR: II35696008 A**

NTI: 015873 | KNORR: II35696008 A | NTI: 023234



REP. SERVO EMBR. CARCAZA ALUMINIO  
KNORR  
KIT REP. SERVO EMBRAGUE CARCAZA DE  
ALUMINIUM  
REPAIR KIT CLUTCH SERVO ALUMINIUM  
HOUSING



SERVO EMBREAGEM STRALIS  
SERVO EMBREAGEM STRALIS  
CLUTCH SERVO IVECO STRALIS

IVECO: CURSOR, EUROCARGO, EUROTECH, EUROTRAKKER, NOVO STRALIS, NOVO TRAKKER, POWERSTAR, STRALIS, TRAKKER

**KNORR: II35696008 P**

NTI: 027210 | KNORR: II35696008 P



REP. SERVO EMBR. CARCAZA FERRO  
KNORR  
KIT REP. SERVO EMBRAGUE CARCAZA DE  
FIERRO KNORR  
REPAIR KIT CLUTCH SERVO IRON HOUSING  
KNORR



SERVO EMBR. N.STRALIS/N.TRAKKER 3  
ROSCAS =KNORR  
SERVO DE EMBRAGUE IVECO STRALIS =  
KNORR=  
CLUTCH SERVO IVECO STRALIS KNORR

IVECO: CURSOR, EUROCARGO, EUROTECH, EUROTRAKKER, NOVO STRALIS, NOVO TRAKKER, POWERSTAR, STRALIS, TRAKKER

**KNORR: II35696008**

NTI: 014716 | KNORR: II35696008 | NTI: 023210



REP. SERVO EMBR. CARCAZA FERRO  
KNORR  
KIT REP. SERVO EMBRAGUE CARCAZA DE  
FIERRO KNORR  
REPAIR KIT CLUTCH SERVO IRON HOUSING  
KNORR



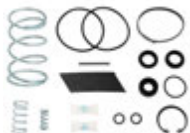
SERVO EMBR. TRAKKER/EUROTECH 2  
ROSCAS =KNORR=  
SERVO EMBR. TRAKKER/EUROTECH 2  
ROSCAS =KNORR=  
CLUTCH SERVO IVECO STRALIS KNORR

IVECO: CURSOR, EUROCARGO, EUROTECH, EUROTRAKKER, NOVO STRALIS, NOVO TRAKKER, POWERSTAR, STRALIS, TRAKKER



**KNORR: K0124040061**

NTI: 012370 | KNORR: K0124040061 | NTI: 012327



REP. SERVO EMBR. CONSTELLATION =  
COMPLETO=  
REPARACION SERVO EMBRAGUE  
CLUTCH SERVO REPAIR KIT  
CONSTELLATION



SERVO MID 83MM –ROSCA M12X1.5=  
SERVO DE EMBRAGUE 83MM  
CLUTCH SERVO 83MM W/ THREAD M12X1,5

VW: 13-190 CONSTELLATION ADVENTECH, 13.180E CONSTELLATION, 15-190 CONSTELLATION ADVANTECH, 15.180E CONSTELLATION, 17-190 CONSTELLATION ADVANTECH, 17-330 CONSTELLATION ADVANTECH, 17.250E CONSTELLATION, 17.320E CONSTELLATION, 19-390T CONSTELLATION ADVANTECH, 19.320E CONSTELLATION, 19.370 CONSTELLATION, 24.250ECONSTELLATION, 24.320ECONSTELLATION, 25-390T CONSTELLATION ADVANTECH, 25.320 CONSTELLATION, 25.370E CONSTELLATION, 26-280 CONSTELLATION ADVANTECH, 26-390T CONSTELLATION ADVANTECH, 26-420T CONSTELLATION ADVANTECH, 26.260 CONSTELLATION, 31-280 CONSTELLATION ADVANTECH, 31-330 CONSTELLATION ADVANTECH, 31-390 CONSTELLATION ADVANTECH, 31.260 CONSTELLATION, 31.320E CONSTELLATION, 31.370E CONSTELLATION

**KNORR: K0124040061 P**

NTI: 016350 | KNORR: K0124040061 P | NTI: 022920



REP. SERVO EMBR. CONSTELLATION =  
PARCIAL=  
KIT REP. SERVO EMBRAGUE VW  
REPAIR KIT CLUTCH SERVO VW



SERVO MID 83MM –ROSCA M12X1.5=  
SERVO DE EMBRAGUE 83MM  
CLUTCH SERVO 83MM W/ THREAD M12X1,5

VW: 13-190 CONSTELLATION ADVENTECH, 13.180E CONSTELLATION, 15-190 CONSTELLATION ADVANTECH, 15.180E CONSTELLATION, 17-190 CONSTELLATION ADVANTECH, 17-330 CONSTELLATION ADVANTECH, 17.250E CONSTELLATION, 17.320E CONSTELLATION, 19-390T CONSTELLATION ADVANTECH, 19.320E CONSTELLATION, 19.370 CONSTELLATION, 24.250ECONSTELLATION, 24.320ECONSTELLATION, 25-390T CONSTELLATION ADVANTECH, 25.320 CONSTELLATION, 25.370E CONSTELLATION, 26-280 CONSTELLATION ADVANTECH, 26-390T CONSTELLATION ADVANTECH, 26-420T CONSTELLATION ADVANTECH, 26.260 CONSTELLATION, 31-280 CONSTELLATION ADVANTECH, 31-330 CONSTELLATION ADVANTECH, 31-390 CONSTELLATION ADVANTECH, 31.260 CONSTELLATION, 31.320E CONSTELLATION, 31.370E CONSTELLATION

**KNORR: K0124040062**

NTI: 021935 | KNORR: K0124040062 | NTI: 022579



REP. SERVO EMBR. CONSTELLATION C/  
PISTAO =KNORR=  
REPARACION SERVO EMBRAGUE  
CLUTCH SERVO REPAIR KIT  
CONSTELLATION



SERVO MID 83MM –ROSCA M12X1.5=  
SERVO DE EMBRAGUE 83MM  
CLUTCH SERVO 83MM W/ THREAD M12X1,5

VW: 13-190 CONSTELLATION ADVENTECH, 13.180E CONSTELLATION, 15-190 CONSTELLATION ADVANTECH, 15.180E CONSTELLATION, 17-190 CONSTELLATION ADVANTECH, 17-330 CONSTELLATION ADVANTECH, 17.250E CONSTELLATION, 17.320E CONSTELLATION, 19-390T CONSTELLATION ADVANTECH, 19.320E CONSTELLATION, 19.370 CONSTELLATION, 24.250ECONSTELLATION, 24.320ECONSTELLATION, 25-390T CONSTELLATION ADVANTECH, 25.320 CONSTELLATION, 25.370E CONSTELLATION, 26-280 CONSTELLATION ADVANTECH, 26-390T CONSTELLATION ADVANTECH, 26-420T CONSTELLATION ADVANTECH, 26.260 CONSTELLATION, 31-280 CONSTELLATION ADVANTECH, 31-330 CONSTELLATION ADVANTECH, 31-390 CONSTELLATION ADVANTECH, 31.260 CONSTELLATION, 31.320E CONSTELLATION, 31.370E CONSTELLATION

**KNORR: K015222 R**

NTI: 017923 | KNORR: K015222 R | NTI: 023232



REP. SERVO EMBR. MID IVECO  
KIT REP. SERVO DE EMBRAGUE MID IVECO  
REPAIR KIT CLUTCH SERVO MID IVECO



SERVO EMBR. MID  
SERVO EMBR. MID  
CLUTCH SERVO MID

IVECO: EUROCARGO, TECTOR

**KNORR: SM1A05021**

NTI: 016407 | KNORR: SM1A05021 | NTI: 022913



REP. SERVO EMBR. MID SI/ GUIA PISTAO =  
IVECO=  
KIT REPARACION SERVO DE EMBRAGUE SIN  
PISTON =IVEC=  
REPAIR KIT CLUTCH SERVO W/O PISTON =  
IVECO=



SERVO MID EUROCARGO/TECTOR =KNORR=  
SERVO MID EUROCARGO/TECTOR =KNORR=  
CLUTCH SERVO MID

IVECO: CC118 E20 ONIBUS, CC118 E22 ONIBUS, CC170 E22 ONIBUS, EUROCARGO, TECTOR



**KNORR: 0085860342**

NTI: 012981 | MERCEDES: 0085860342 | NTI: 023077



REP. SERVO FREIO 1113  
KIT REP. SERVO FRENO  
REPAIR KIT BRAKE BOOSTER 1113



SERVO FREIO 1113  
SERVO FREIO 1113  
CLUTCH SERVO MB 1113

MERCEDES: L1113, L1114, L1118, L1313, L1316, LA1113, LA1313, LAK1113, LAK1313, LK1113, LK1313, LK1316, LS1113, LS1313, LS1316

**KNORR: 983455860343**

NTI: 007433 | KNORR: 983455860343 | NTI: 022964



REP. SERVO FREIO 1113 (VENENO)  
KIT REP. SERVO FRENO  
REPAIR KIT BRAKE BOOSTER 1113



SERVO FREIO 1113  
SERVO FREIO 1113  
CLUTCH SERVO MB 1113

MERCEDES: 1111, 1113, 1313

**KNORR: 9481083004**

NTI: 004135 | KNORR: 9481083004



REP. SERVO FREIO 608 COMP. =KNORR=  
REPARO SERVO FRENO 608 COMPLETO -  
KNORR  
BRAKE BOOSTER REPAIR KIT 608 KNORR



SERVO FREIO 608/708  
SERVO FREIO 608/708  
CLUTCH SERVO MB 608/708

MERCEDES: L608D, L608E, L708D, L708E

**KNORR: 9481083004 P**

NTI: 009939 | KNORR: 9481083004 P



REP. SERVO FREIO 608 PARCIAL =KNORR=  
JG. REPAROS SERVO-FRENO OM.314  
BRAKE BOOSTER REPAIR KIT 608 (PARTIAL)  
KNORR



SERVO FREIO 608/708  
SERVO FREIO 608/708  
CLUTCH SERVO MB 608/708

MERCEDES: L608D, L608E, L708D, L708E

**KNORR: 42536490 R**

NTI: 023058 | IVECO: 42536490 R



REP.SERVO EMBR. AUTOM.  
REP.SERVO EMBR. AUTOM.  
CLUTCH SERVO AUTOMATIC REP.KIT



SERVO EMBREAGEM =STRALIS=  
SERVO EMBREAGEM =STRALIS=  
CLUTCH SERVO IVECO STRALIS

IVECO: NOVO STRALIS, NOVO TRAKKER



KNORR: 75914710

NTI: 019224 | KNORR: 75914710 | NTI: 022744



RESERV. SERVO EMBR. MID  
RESERV. SERVO EMBRAGUE MID  
RESERVOIR CLUTCH SERVO MID



SERVO MID 83MM =ROSCA M12X1.5=  
SERVO DE EMBRAGUE 83MM  
CLUTCH SERVO 83MM W/ THREAD M12X1,5

VW: 13-190 CONSTELLATION ADVANTECH, 13.180E CONSTELLATION, 15-190 CONSTELLATION ADVANTECH, 15.180E CONSTELLATION, 17-190 CONSTELLATION ADVANTECH, 17-330 CONSTELLATION ADVANTECH, 17.250E CONSTELLATION, 17.320E CONSTELLATION, 19-390T CONSTELLATION ADVANTECH, 19.320E CONSTELLATION, 19.370 CONSTELLATION, 24.250ECONSTELLATION, 24.320ECONSTELLATION, 25-390T CONSTELLATION ADVANTECH, 25.320 CONSTELLATION, 25.370E CONSTELLATION, 26-280 CONSTELATIOM ADVANTECH, 26-390T CONSTELLATION ADVANTECH, 26-420T CONSTELLATION ADVANTECH, 26.260 CONSTELLATION, 31-280 CONSTELLATION ADVANTECH, 31-330 CONSTELLATION ADVANTECH, 31-390 CONSTELLATION ADVANTECH, 31.260 CONSTELLATION, 31.320E CONSTELLATION, 31.370E CONSTELLATION



**VARGA: RCCE00181**

NTI: 019223 | NTI: 022775 | VARGA: RCCE00181



CIL. AUX. EMBREAGEM  
 CILINDRO AUX. EMBRAGUE  
 CYLINDER CLUTCH AUX.

FORD: CARGO 1113, CARGO 1215, CARGO 1218, CARGO 1313, CARGO 1415, CARGO 1418, CARGO 1615, CARGO 1618, CARGO 2217

**VARGA: 2VB721405**

NTI: 013494 | NTI: 023771 | VW: 2VB721405



CIL. MESTRE EMBREAGEM  
 CILINDRO MAETRO EMBRAGUE  
 CLUTCH MASTER CYLINDER

VW: 13.150, 13.170, 13.190, 17.180 CUMMINS EURO 3, 17.180 MWM EURO 3, 17.210, 17.220, 17.220 CUMMINS EURO 3, 17.220 MWM EURO 3, 17.300, 24.220, 24.220 CUMMINS EURO 3, 24.220 MWM EURO 3, 24.250, 26.300, 40.300, 7.100, 7.110, 7.120, 8.120, 8.120OD, 8.140CE, 8.140CO, 8.150, 8.150 OD, 9.150OD

**VARGA: TF3721405**

NTI: 004560 | NTI: 021629, 022625 | VW: TAR721405, TE3721405, TF3721405



CIL. MESTRE EMBREAGEM DIAM. 22,22MM  
 CILINDRO MESTRE DE EMBRAGUE  
 CLUTCH MASTER CYLINDER

VW: 12.140H, 12.140T, 12.170BT, 12.180, 14.150, 14.170BT, 14.180, 14.200, 14.220, 15.180EOD, 15.190EOD, 16.170, 16.180CO, 16.200, 16.210, 16.210CO, 16.220, 16.220 LEITO, 16.300, 17.210OD, 17.240OT, 17.260EOT, 18.310OT, 18.320EOT, 24.220, 24.250, 35.300, 35.300 LEITO, 40.300, 40.300 LEITO, 7.100, 7.110S, 7.90S, 8.100, 8.140, 8.140CE, 8.140CKD, 8.140CO, 9.150OD, L.80



BENDIX: 537194

NTI: 001887 | NTI: 022608 | SCANIA: 537194



CIL. EMBR. C/ RESERV. 112 =ALUMINIO=  
 CILINDRO DE EMBRAGUE CON RECIPIENTE  
 CLUTCH CYLINDER ALUMINUM (W/  
 RESERVOIR)

SCANIA: R112, R142, T112, T142

BENDIX: 537194 D

NTI: 015165 | NTI: 022846 | SCANIA: 537194 D



CIL. EMBR. C/ RESERV. 112 =FERRO=  
 CILINDRO EMBRAGUE C/ RESERV. 112 =  
 FERRO=  
 CLUTCH CYLINDER IRON (W/ RESERVOIR)

SCANIA: R112, R142, T112, T142

BENDIX: 537194 A

NTI: 003513 | NTI: 022848 | SCANIA: 537194 A



CIL. EMBR. S/ RESERV. 112 =ALUMINIO=  
 CILINDRO DE EMBRAGUE SIN RECIPIENTE  
 112  
 CLUTCH CYLINDER ALUMINUM (NO  
 RESERVOIR)

SCANIA: R112, R142, T112, T142

BENDIX: 537194 F

NTI: 015166 | NTI: 022847 | SCANIA: 537194 F



CIL. EMBR. S/ RESERV. 112 =FERRO=  
 CILINDRO EMBRAGUE S/ RESERV. 112 =  
 FERRO=  
 CLUTCH CYLINDER IROW W/ RESERVOIR

SCANIA: R112, R142, T112, T142

BENDIX: 538919

NTI: 001921 | NTI: 022708 | SCANIA: 538919



REP. CIL. EMBR. 112 =TIPO BENDIX=  
 REPARO CIL. EMBRAGUE 112  
 CLUTCH CYLINDER REPAIR KIT 112 BENDIX  
 TYPE



CIL. EMBR. C/ RESERV. 112 =FERRO=  
 CILINDRO EMBRAGUE C/ RESERV. 112 =  
 FERRO=  
 CLUTCH CYLINDER IRON (W/ RESERVOIR)

SCANIA: R112, R142, T112, T142

**DIVERSOS: 1345149**

NTI: 007993 | SCANIA: 1345149



CANECA REDUZIDA 06 MARCHAS 94/114/24/  
64  
VALVULA  
REDUCTION GEAR HOUSING 890/900 94/114/  
24/64

DIVERSOS: - | SCANIA: 114, 124, 164, 94, P.G.R.

**DIVERSOS: 284015**

NTI: 001192 | SCANIA: 284015



CANECA REDUZIDA 111/112  
CILINDRO DEL CAMBIO 111/112  
REDUCTION GEAR HOUSING 111/112

DIVERSOS: - | SCANIA: R112, R113, R142, R143, T112, T113, T142

**DIVERSOS: 1526816 V**

NTI: 007438 | NTI: 022670, 022671, 022672 | VOLVO: 1526816 V



CANECA REDUZIDA NH/FH  
CARCAZA REDUCIDA NH/FH  
REDUCTION GEAR HOUSING NH/FH

DIVERSOS: - | VOLVO: EDC, FH12, NH12, NL10, NL12

**DIVERSOS: 1345151**

NTI: 009066 | SCANIA: 1304161, 1326847, 1345151, 1484809



CANECA TRANSF. 06/08 MARCHAS 113/S4  
CILINDRO CAJA CAMBIO  
TRANSFER GEAR BOX HOUSING P93/113/143/  
S.4

DIVERSOS: - | SCANIA: 114, 124, 164, 94, K113, K114, K124, K94, P.G.R., P93, R113, R143, T113

**DIVERSOS: 1321420**

NTI: 009744 | SCANIA: 1321420, 1484807, 1484808



CANECA TRANSF. 06/08 MARCHAS 113/S4  
CILINDRO  
TRANSFER GEAR HOUSING



EIXO CANECA TRANSF. CX. CAMBIO S.4  
EJE CAJA DE CAMBIO  
GEARBOX HOUSING AXLE

DIVERSOS: - | SCANIA: 114, 124, 164, 94, K113, K114, K124, K94, P.G.R., P93, R113, R143, T113

**DIVERSOS: 1527363 V**

NTI: 006051 | NTI: 022787, 022788, 022789, 022790 | VOLVO: 1527363 V, 1662959 V



CANECA TRANSF. N/NL10/12/EDC  
CARCAZA CILINDRO TRANSFERENCIA  
TRANSFER GEAR BOX HOUSING N/NL10/12/  
EDC

DIVERSOS: - | VOLVO: EDC, FH12, FM12, NH12, NL10, NL12



DIVERSOS: 1656239 V

NTI: 015102 | VOLVO: 1652857 V, 1656239 V



CANECA TRANSFERENCIA FH/NH  
CANECA TRANSFERENCIA FH/NH  
TRANSFER GEAR BOX HOUSING

DIVERSOS: - | VOLVO: B10B, B10R, B12, B12B, B7R, B9R, FH12, FH16, FM12, FM9, N10, NH12, NL10, NL12

DIVERSOS: 43234474

NTI: 026416 | IVECO: 42534474, 42557497, 43234474



CANECA TRAS. CX. TRANSF. CX. CAMBIO  
CANECA TRAS. CX. TRANSF. CX. CAMBIO  
CANECA TRAS. CX. TRANSF. CX. CAMBIO

DIVERSOS: - | IVECO: EUROTECH, EUROTRAKKER, NOVO STRALIS, NOVO TRAKKER, STRALIS, TRAKKER

DIVERSOS: 2S2298109

NTI: 017728 | VW: 2S2298109



CIL. ACION. FREIO MOTOR  
CIL. ACION. FREIO MOTOR  
ENGINE BRAKE CYLINDER

DIVERSOS: - | VW: 13.180E CONSTELLATION, 15.180E CONSTELLATION, 17.180 CUMMINS EURO 3, 17.180 MWM EURO 3, 17.220, 17.220 CUMMINS EURO 3, 17.220 MWM EURO 3, 17.250E CONSTELLATION, 17.320E CONSTELLATION, 19.320E CONSTELLATION, 19.370 CONSTELLATION, 23.220, 24.220 CUMMINS EURO 3, 24.220 MWM EURO 3, 24.250ECONSTELLATION, 24.320ECONSTELLATION, 25.320 CONSTELLATION, 25.370E CONSTELLATION, 26.220, 26.260 CONSTELLATION, 31.260 CONSTELLATION, 31.320E CONSTELLATION, 31.370E CONSTELLATION

DIVERSOS: 1400769

NTI: 005800 | NTI: 026264, 026829 | SCANIA: 1360598, 1376474, 1400769, 1505927, 20405258



CIL. ACION. FREIO MOTOR - SERIE 4  
CILINDRO ACION. FRENO MOTOR - SERIE 4  
ENGINE BRAKE CYLINDER S4

DIVERSOS: - | SCANIA: 114, 124, 94, F94, K114, K124, K94

DIVERSOS: 1507790

NTI: 018738 | NTI: 026830 | SCANIA: 1507790, 1767201, 1821737



CIL. ACION. FREIO MOTOR - SERIE 5  
CILINDRO ACION. FRENO MOTOR - SERIE 5  
ENGINE BRAKE CYLINDER S5

DIVERSOS: - | SCANIA: 114, 124, K114, K124, P.G.R.

DIVERSOS: 1673553

NTI: 003490 | NTI: 026831 | SCANIA: 1332503, 1348896, 1673552, 1673553, 1677877, 389012



CIL. ACION. FREIO MOTOR 113  
CILINDRO DE FRENO MOTOR  
ENGINE BRAKE CYLINDER 113

DIVERSOS: - | SCANIA: F113, K113, L113, P93, R113, R143, T113

**DIVERSOS: TAF253861**

NTI: 005096 | VW: TAF253861



CIL. ACION. FREIO MOTOR SIST. KNORR  
CILINDRO DE FRENO MOTOR KNORR  
ENGINE BRAKE CYLINDER KNORR

DIVERSOS: - | FORD: 1317E 4X2, 1422, 1517E 4X2, 1622, 1630, 1717E 4X2, 1722, 1730, 1730 ARG., 1731, 2322, 2421, 2422, 2425, 2622, 2626, 3224, 3530, 4030, 4031, 4331, 814/815(96/...), 815, 815E, 815S, 915, B1618 ONIBUS, B1621 ONIBUS | VW: 12.140H, 14.200, 14.220, 16.170, 16.180CO, 16.200, 16.210CO, 16.220, 16.220 LEITO, 16.300, 17.220, 17.250E, 17.300, 17.310, 18.310, 23.220, 23.250E, 23.310, 24.250, 24.250E, 26.220, 26.260, 26.300, 26.310, 31.260, 31.310, 35.300, 35.300H, 40.300, 40.300 LEITO, 7.100, 7.120, 8.100, 8.120, 8.120OD, 8.140, 8.150, 8.150 EOD, 8.150 OD, 8.150E, 8.150E PLUS, 8.150EOD, 9.150E, 9.150E CUMMINS DELIVERY, 9.150EOD, 9.150OD

**DIVERSOS: 2RP253861**

NTI: 005095 | NTI: 021851 | VW: 2RP253861, 2TK253861



CIL. ACION. FREIO MOTOR SIST. WABCO  
CILINDRO DE FRENO MOTOR WABCO  
ENGINE BRAKE CYLINDER WABCO

DIVERSOS: - | VW: 12.140H, 12.140T, 12.180, 13.170E, 13.180E, 14.150, 14.150 CHILE, 14.180, 14.200, 14.220, 15.170E, 15.180E, 15.180EOD, 15.190E, 15.190EOD, 16.170, 16.180CO, 16.200, 16.220, 16.220 LEITO, 16.300, 17.210OD, 17.220, 17.250E, 17.300, 17.310, 18.310, 23.220, 23.250E, 23.310, 24.220, 24.250, 24.250E, 26.220, 26.260, 26.260E, 26.300, 26.310, 31.260E, 31.310, 35.300, 35.300 LEITO, 40.300, 40.300 LEITO, 8.150, 8.150E, 9.150E

**DIVERSOS: 20528900 V**

NTI: 022635 | VOLVO: 20528900 V



CIL. ACION. FREIO MOTOR SIST. WABCO  
CILINDRO DE FRENO MOTOR WABCO  
ENGINE BRAKE CYLINDER WABCO

DIVERSOS: - | VOLVO: VM 210 4X2, VM 240 4X2, VM 260 4X2

**DIVERSOS: 81307156152**

NTI: 025297 | MAN: 81307156152



CIL. ACION.EMBR.MAN  
CIL. ACION.EMBR.MAN  
CLUTCH ACTION CLY . MAN

DIVERSOS: - | MAN: TGA

**DIVERSOS: 41285167**

NTI: 024217 | IVECO: 41285167, 41285278



CIL. ACION.EMBR.N.TRACKER  
CIL. ACION.EMBR.N.TRACKER  
CLUTCH CYLINDER W/ RESERVOIR

DIVERSOS: - | IVECO: NOVO TRAKKER



DIVERSOS: 2P0721405

NTI: 025296 | VW: 2P0721405



CIL. ACION.EMBR.VW  
 CIL. ACION.EMBR.VW  
 CLUTCH CYLINDER VW

DIVERSOS: - | VW: 15.180E OD, 15.190E OD, 17.210E OD

DIVERSOS: 1455730

NTI: 006044 | SCANIA: 1123296, 1393332, 1434649, 1455730, 1522377, 522377, 551572



CIL. ATUADOR CENTRAL EMBR. 94/114/24  
 CILINDRO RECEPTOR  
 CLUTCH RELESE BEARING 94/114/24

DIVERSOS: - | SCANIA: 114, 124, 164, 94, F94, K114, K124, K94

DIVERSOS: 41211007 C

NTI: 018092 | IVECO: 41211007 C, 41285311 C



CIL. EMBR. C/ RESERV. E SENSOR STRALIS/  
 TRAKKE/TECH  
 CIL. EMBR. C/ RESERV. E SENSOR STRALIS/  
 TRAKKE/TECH  
 CLUTCH CYLINDER W/ RESERVOIR AND  
 SENSOR

DIVERSOS: - | IVECO: NOVO STRALIS, NOVO TRAKKER, STRALIS, TRAKKER

DIVERSOS: 41211005

NTI: 017550 | IVECO: 41211005, 41285355



CIL. EMBR. C/ RESERV. EUROTECH/STRALIS  
 CIL. EMBR. C/ RESERV. EUROTECH/STRALIS  
 CLUTCH CYLINDER W/ RESERVOIR

DIVERSOS: - | IVECO: EUROCARGO, EUROTECH, EUROTRAKKER

DIVERSOS: BC457A508BB

NTI: 024838 | FORD: BC457A508BB



CIL. EMBR. FORD CARGO  
 CIL. EMBR. FORD CARGO  
 CLUTCH CYLINDER FORD

DIVERSOS: - | FORD: 1317 4X2, 1319 4X2, 1419 4X2, 1517 4X2, 1519 4X2, 1717 4X2, 1719 4X2

DIVERSOS: 9792950006A

NTI: 024835 | MERCEDES: 9792950006, 9792950006A



CIL. EMBR. MBB-915/1016  
 CIL. EMBR. MBB-915/1016  
 CLUTCH CYLINDER MBB 915/1016

DIVERSOS: - | MERCEDES: 915, ATEGO1016

**DIVERSOS: 9792950106** | NTI: 024836 | MERCEDES: 9792950106



CIL. EMBR. MBB-LO 815/LO 916  
 CIL. EMBR. MBB-LO 815/LO 916  
 CLUTCH CYLINDER MBB-LO 815/LO 916

DIVERSOS: - | MERCEDES: LO815, LO916

**DIVERSOS: 1355979** | NTI: 017961 | SCANIA: 1355979, 1532517, 1543633, 1545626, 1754943, 532517



CIL. EMBR. S.4 =CX.GR801/GRS890/GRS900/  
 920=  
 CILINDRO ACION. EMBRAGUE - SERIE 4  
 CLUTCH CYLINDER S4

DIVERSOS: - | SCANIA: 114, 124, 164, 94, K114, K124, K94, P.G.R.

**DIVERSOS: 1756460** | NTI: 019610 | SCANIA: 1756460



CIL. EMBR. S.4 M12X1.5MM (CX.EK630/640)  
 CILINDRO ACION. EMBRAGUE - SERIE 4  
 CLUTCH CYLINDER S4

DIVERSOS: - | SCANIA: 114, 124, 164, 94, K114, K124, K94, P.G.R.

**DIVERSOS: 20553368 V** | NTI: 024837 | VOLVO: 20553368 V



CIL. EMBR. VOLVO VM  
 CIL. EMBR. VOLVO VM  
 CLUTCH CYLINDER VOLVO VW

DIVERSOS: - | VOLVO: VM17, VM23

**DIVERSOS: 0022952507** | NTI: 025928 | MERCEDES: 0022952507, A0022952507 | NTI: 026489, 026490



CIL. EMBREAGEM ACCELO  
 CIL. EMBREAGEM ACCELO  
 CLUTCH CYLINDER MB ACCELO

DIVERSOS: - | MERCEDES: ACCELO1016, ACCELO815, ACCELO915C

**DIVERSOS: 4854828** | NTI: 025927 | IVECO: 4854828 | NTI: 026488



CIL. EMBREAGEM TECTOR/EUROCARGO  
 CIL. EMBREAGEM TECTOR/EUROCARGO  
 CLUTCH CYLINDER TECTOR/EUROCARGO

DIVERSOS: - | IVECO: EUROCARGO, ONIBUS CC118E20 GNC, ONIBUS CC118E22, ONIBUS CC170E22, TECTOR



**DIVERSOS: 81307156149**

NTI: 019618 | MANN: 81307156149, 81307156154, 81307156156



CIL. MASTER EMBR. C/AMPLIF. =MAN EGS=  
CIL. MASTER EMBR. C/AMPLIF. =MAN EGS=  
CLUTCH MASTER CLY. W/ AMPLIFIER = MAN  
EGS=

DIVERSOS: - | MAN: TGA, TGX

**DIVERSOS: 1927829**

NTI: 018676 | SCANIA: 1523400, 1800442, 1927829



CIL. MASTER EMBREAGEM P.G.R.T  
CIL. MASTER EMBREAGEM P.G.R.T  
CLUTCH MASTER CYLINDER P.G.R.T.

DIVERSOS: - | SCANIA: PGR-OPTICRUISE C/PED

**DIVERSOS: 0022950206**

NTI: 017551 | MERCEDES: 0022950206 | NTI: 025709



CIL. MESTRE EMBREAGEM =AXOR ROSCA  
M6X1 MM=  
CIL. MESTRE EMBREAGEM =AXOR ROSCA  
M6X1 MM=  
CLUTCH MASTER CYLINDER AXOR

DIVERSOS: - | MERCEDES: AXOR1835 LS, AXOR1840 LS, AXOR1843 LS, AXOR2335 LS, AXOR2540 LS, AXOR2543 LS

**DIVERSOS: 0022959106**

NTI: 017902 | MERCEDES: 0012959106, 0022959106



CIL. MESTRE EMBREAGEM =MBB= AXOR  
CIL. MESTRE EMBREAGEM =MBB= AXOR  
CLUTCH MASTER CYLINDER AXOR

DIVERSOS: - | MERCEDES: ACCELO 1016, ACCELO 1315, ATEGO1315, ATEGO1418, ATEGO1419, ATEGO1518, AXOR, L1620

**DIVERSOS: 1358801 A**

NTI: 003096 | SCANIA: 1105332 A, 1358800 A, 1358801 A, 1361136 A



CIL. MESTRE EMBREAGEM 113 =ALUMINIO=  
CILINDRO EMBRAGUE 113  
CLUTCH MASTER CYLINDER 113 ALUMINUM

DIVERSOS: - | SCANIA: F113, P93, R113, R143, T113

**DIVERSOS: 1358801**

NTI: 007263 | SCANIA: 1105332, 1358800, 1358801, 1361136



CIL. MESTRE EMBREAGEM 113 =FERRO=  
CILINDRO MAESTRO EMBRAGUE T113  
CLUTCH MASTER CYLINDER 113 IRON

DIVERSOS: - | SCANIA: F113, P93, R113, R143, T113

**DIVERSOS: 3842957006** | NTI: 012516 | MERCEDES: 3842957006 | NTI: 026095



CIL. MESTRE EMBREAGEM 371/OH1419/1420  
CILINDRO MAESTRO EMBRAGUE  
CLUTCH MASTER CYLINDER 371/OH1419/  
1420

DIVERSOS: - | MERCEDES: L1214, L1418, L1618, L1620, LK1618, O371, OH1419, OH1420

**DIVERSOS: 0022950806** | NTI: 017903 | MERCEDES: 0022950806



CIL. MESTRE EMBREAGEM ATEGO =MBB=  
CIL. MESTRE EMBREAGEM ATEGO =MBB=  
CLUTCH MASTER CYLINDER ATEGO

DIVERSOS: - | MERCEDES: ATEGO1315, ATEGO1418, ATEGO1419, ATEGO1518, ATEGO1718, ATEGO1719, ATEGO1723, ATEGO1725, ATEGO1726, ATEGO1728, ATEGO1729, ATEGO2423, ATEGO2425, ATEGO2426, ATEGO2428, ATEGO2429, AXOR1933, AXOR2035, AXOR2036, AXOR2040, AXOR2041, AXOR2044, AXOR2425, AXOR2428, AXOR2533, AXOR2536, AXOR2540, AXOR2541, AXOR2544, AXOR2640, AXOR2641, AXOR2644, AXOR2825, AXOR2826, AXOR2828, AXOR2831, AXOR3340, AXOR3341, AXOR3344, AXOR4140, AXOR4141, AXOR4143, AXOR4144

**DIVERSOS: 20835246 V** | NTI: 014970 | VOLVO: 205535588 V, 20553587 V, 20835246 V, 3192696 V, 8172824 V, 85013339 V



CIL. MESTRE EMBREAGEM C/ RESERV. FH12/  
FH16  
CIL. MESTRE EMBREAGEM C/ RESERV. FH12/  
FH16  
CLUTCH MASTER CYLINDER FH/D12D (W/  
RESERVOIR)

DIVERSOS: - | VOLVO: FH12, FM12, FM9, NH12

**DIVERSOS: 1628218 V** | NTI: 009624 | VOLVO: 1628218 V, 16282188 V



CIL. MESTRE EMBREAGEM FH /NH12/B12R  
CILINDRO EMBRAGUE FH  
CLUTCH MASTER CYLINDER FH/NH/FM

DIVERSOS: - | VOLVO: B12M, B7R, FH12, FM12, FM7, NH12

**DIVERSOS: 3862957007** | NTI: 012524 | MERCEDES: 3862957007 | NTI: 026379



CIL. MESTRE EMBREAGEM L/LK/LS1621  
CILINDRO MAESTRO EMBRAGUE  
CLUTCH MASTER CYLINDER L/LK/LS1621

DIVERSOS: - | MERCEDES: L1618, L1620, L1621

**DIVERSOS: 3882957006** | NTI: 012525 | MERCEDES: 3882957006 | NTI: 026392



CIL. MESTRE EMBREAGEM L/LS/LK1929/35/41  
CILINDRO MAESTRO EMBRAGUE  
CLUTCH MASTER CYLINDER L/LS/LK1929/35/  
41

DIVERSOS: - | MERCEDES: L1929, L1935, L1941, LK1929, LK1935, LK1941, LS1929, LS1935, LS1941



DIVERSOS: 0012955906

NTI: 012523 | MERCEDES: 0012955906 | NTI: 025422



CIL. MESTRE EMBREAGEM L1929/35/38/41/  
LS1625/30/35  
CILINDRO MAESTRO EMBRAGUE  
CLUTCH MASTER CYLINDER L1929/35/38/41/  
LS1625

DIVERSOS: - | MERCEDES: L1929, L1935, L1938, L1941, L709, L812, L912, LK1929

DIVERSOS: A3842950006

NTI: 018810 | MERCEDES: 3842950006, A3842950006



CIL. MESTRE EMBREAGEM MBB  
CIL. MESTRE EMBREAGEM MBB  
CLUTCH MASTER CYLINDER MBB

DIVERSOS: - | MERCEDES: O500, O500 M, O500 R, O500 RS, O500 RSD, O500 U, OF1218, OF1319, OF1417, OF1418, OF1519, OF1721, OF1722, OF1723, OF1724, OF1730, OH1215 L, OH1518, OH1519, OH1521, OH1526, OH1621 L, OH1622 L, OH1623 L, OH1626 L

DIVERSOS: 1620462 V

NTI: 003515 | VOLVO: 1581209 V, 15812092 V, 1614351 V, 16143513 V, 1620462 V, 16204620 V, 1669488 V, 16694887 V, 8126730 V



CIL. MESTRE EMBREAGEM/NL10/12 B10M/12/  
58  
CILINDRO DE EMBRAGUE  
CLUTCH MASTER CYLINDER N/NL10/12  
B10M/12/58

DIVERSOS: - | VOLVO: B10M, B58, N10, N12, NL10, NL12

DIVERSOS: 0000721512

NTI: 009598 | MERCEDES: 0000721512 | NTI: 026492



CILINDRO ACIONAMENTO ACELERADOR MBB  
CIL. ACIONAM. FRENO MOTOR  
ENGINE BRAKE CYLINDER

DIVERSOS: - | MERCEDES: L1513, L1514, L1516, L1519, L1614, L1618, L1620, L1621, LK1513, LK1514, LK1516, LK1519, LK1618, LK1621, LS1519, LS1524, LS1525

DIVERSOS: 2046284

NTI: 028140 | DAF: 2046284, 2323315, 24055101 | NTI: 028141, 028142, 028785



CILINDRO ATUADOR DAF/MAN  
CILINDRO ATUADOR DAF/MAN  
CLUTCH RELEASE BEARING DAF/MAN

DAF: XF106 | DIVERSOS: -

DIVERSOS: 22809232 V

NTI: 028134 | VOLVO: 20812087 V, 21320929 V, 21465238 V, 21580968 V, 21580972 V, 22429963 V, 22440437 V, 22809232 V, 23417523...



CILINDRO ATUADOR ELETR. FH/FM/VM  
CILINDRO ATUADOR ELETR. FH/FM/VM  
CLUTCH RELEASE ELECTRONIC FH/FM/VM

DIVERSOS: - | VOLVO: B11R, B12B, B12M, B12R, B13R, B9R, FH, FM, VM

**DIVERSOS: 0032509715** | NTI: 028138 | MERCEDES: 0032501015, 0032502115, 0032503515, 0032507015, 0032508615, 0032509715, 510036410, A0032501015, A...



CILINDRO ATUADOR ELETR. MBB  
CILINDRO ATUADOR ELETR. MBB  
CLUTCH RELEASE BEARING ELECTRONIC  
FOR M.BENZ

DIVERSOS: - | MERCEDES: ACTROS EVOLUTION

**DIVERSOS: 21580956 V** | NTI: 024333 | VOLVO: 20806451 V, 21320923 V, 21465235 V, 21580956 V, 21580977 V



CILINDRO ATUADOR FH/FM =CAMBIO  
AUTOMATICO=  
CILINDRO ATUADOR FH/FM =CAMBIO  
AUTOMATICO=  
RELEASE BEARING AUTOMATIC GEAR BOX  
FH/FM

DIVERSOS: - | VOLVO: B11R, B12B, B12M, B12R, B13R, B9R, FH12, FH13, FM12, FM13, VM

**DIVERSOS: 0032508515** | NTI: 028143 | MERCEDES: 0032508515, A0032508515



CILINDRO ATUADOR MBB  
CILINDRO ATUADOR MBB  
RELEASE BEARING MBB

DIVERSOS: - | MERCEDES: ACTROS, AROCS, ATEGO

**DIVERSOS: A9452642127** | NTI: 025273 | MERCEDES: 9452642127, A9452642127



CILINDRO COMANDO CX CAMBIO  
CILINDRO COMANDO CX CAMBIO  
GEARBOX CHANGING CYLINDER

DIVERSOS: - | MERCEDES: AXOR TODOS C/CAMBIO G210/211/240/260/280

**DIVERSOS: 501211290** | NTI: 027312 | DAF: 1389650, 1427141, 501211290 | NTI: 027313, 027314, 027315



CILINDRO COMANDO SHIFT  
CILINDRO COMANDO SHIFT  
GEARBOX CHANGING CYLINDER MAN

DAF: CF, XF | DIVERSOS: -

**DIVERSOS: 446414** | NTI: 003514



CILINDRO EMBREAGEM K112/3  
CILINDRO DE EMBRAQUE K 112/3  
CLUTCH CYLINDER K112/3

DIVERSOS: - | SCANIA: K112, K113

**DIVERSOS: 1521976 V**

NTI: 026322 | VOLVO: 1521587 V, 1521976 V



CILINDRO SPLIT CX.CAMBIO VT FH/FM/VM  
 CILINDRO SPLIT CX.CAMBIO VT FH/FM/VM  
 CYLINDER HOUSING FOR GEAR BOX VT FH/  
 FN/VN

DIVERSOS: - | VOLVO: FH12, FH16, FM12, FM9, VM

**DIVERSOS: 2S2253853A**

NTI: 017731 | VW: 2S2253853A



FREIO MOTOR =60MM= CONSTELLATION  
 FREIO MOTOR =60MM= CONSTELLATION  
 ENGINE BRAKE 60MM CONSTELLATION

DIVERSOS: - | VW: 13.180E CONSTELLATION, 15.180E CONSTELLATION

**DIVERSOS: 2S2253853B**

NTI: 013935 | VW: 2S2253853B, 2T2253853



FREIO MOTOR =80MM= CONSTELLATION  
 FRENO MOTOR  
 ENGINE BRAKE 80MM CONSTELLATION

DIVERSOS: - | VW: 17.180 CUMMINS EURO 3, 17.180 MWM EURO 3, 17.220, 17.220 CUMMINS EURO 3, 17.220 MWM EURO 3, 17.250E, 17.250E CONSTELLATION, 17.320E CONSTELLATION, 19.320E, 19.320E CONSTELLATION, 19.370, 19.370 CONSTELLATION, 23.220, 24.220 CUMMINS EURO 3, 24.220 MWM EURO 3, 24.250E, 24.250E CONSTELLATION, 24.320E CONSTELLATION, 25.320, 25.320 CONSTELLATION, 25.370E, 25.370E CONSTELLATION, 26.220, 26.260, 26.260 CONSTELLATION, 31.260, 31.260 CONSTELLATION, 31.320E, 31.320E CONSTELLATION, 31.370E, 31.370E CONSTELLATION

**DIVERSOS: 21284852 V**

NTI: 018151 | VOLVO: 20843686 V, 20843687 V, 21284852 V



FREIO MOTOR 85MM =3-3/8 VM17/23  
 FREIO MOTOR 85MM =3-3/8 VM17/23  
 ENGINE BRAKE 85MM =3-3/8 VOLVO VM17  
 VM23

DIVERSOS: - | VOLVO: VM17, VM23

**DIVERSOS: 1669422 V**

NTI: 024281 | VOLVO: 1669422 V



TAMPA CILINDRO TRANSF. CAMBIO FH12  
 TAMPA CILINDRO TRANSF. CAMBIO FH12  
 TRANSFER CYLINDER COVER, FOR  
 GEARBOX FH12

DIVERSOS: - | VOLVO: FH12, FL10, FL7

**DIVERSOS: 1340404**

NTI: 014256 | SCANIA: 1332131, 1340404



EIXO CANECA TRANSF. CX. CAMBIO S.4  
 EJE CAJA DE CAMBIO  
 GEARBOX HOUSING AXLE

DIVERSOS: - | SCANIA: 114, 124, 164, 94, K113, K124, K94, P.G.R., P93, R113, R143, T113

**DIVERSOS: 1725887** NTI: 027220 | SCANIA: 1725887



GAXETA DA CARCACA DE MUDANCA  
GAXETA DA CARCACA DE MUDANCA  
GEAR BOX OIL SEAL EURO 5/6



CIL. CAMBIO OPTCRUISE P.G.R.  
CIL. CAMBIO OPTCRUISE P.G.R.  
GEAR BOX CYLINDER REP. KIT P.G.R.

DIVERSOS: - | SCANIA: F/K/N ONIBUS, P.G.R., P.G.R.S.

**DIVERSOS: 2RP141147A** NTI: 005056 | VW: 2RP141147A



HASTE ACION. CIL. EMBREAGEM  
ASTA ACIONAMENTO CILINDRO EMBRAGUE  
ROD CLUTCH CYLINDER



CIL. MESTRE EMBREAGEM DIAM. 22,22MM  
CILINDRO MESTRE DE EMBRAGUE  
CLUTCH MASTER CYLINDER

DIVERSOS: - | VW: 12.140H, 12.140T, 12.170BT, 12.180, 14.150, 14.170BT, 14.180, 14.200, 14.220, 15.180EOD, 15.190EOD, 16.170, 16.180CO, 16.200, 16.210, 16.210CO, 16.220, 16.220 LEITO, 16.300, 17.210OD, 17.220, 17.240OT, 17.260EOT, 17.300, 17.310, 18.310OT, 18.320EOT, 23.310, 24.220, 24.250, 26.220, 26.260, 26.300, 31.260, 35.300, 35.300 LEITO, 35.300H, 40.300, 40.300 LEITO, 7.100, 7.110S, 7.90S, 8.100, 8.140, 8.140CE, 8.140CKD, 8.140CO, 9.150OD, L.80

**DIVERSOS: 1523635** NTI: 010295 | SCANIA: 1390791, 1498124, 1523635



HASTE TUCHO TRAMB. CX. CAMBIO  
OPTICRUISE S.4  
ASTA  
GEAR BOX ROD OPTICRUISE S.4



CILINDRO COMANDO CAMBIO  
CILINDRO COMANDO CAMBIO  
CILINDRO COMANDO CAMBIO

DIVERSOS: - | SCANIA: 114, 124, 164, 94, K114, K124, K94, P.G.R.

**DIVERSOS: 244441 X** NTI: 000983 | SCANIA: 1952214 X, 244441 X



REP. CANECA CAMBIO 110/1/2/3  
KIT ACESS CAJA SELETORA  
GEARBOX TRANSFER HOUSING REPAIR KIT  
110/1/2/3



CANECA REDUZIDA 111/112  
CILINDRO DEL CAMBIO 111/112  
REDUCTION GEAR HOUSING 111/112

DIVERSOS: - | SCANIA: 110, 111, LK140, LK141, R112, R113, R142, R143, T112, T113, T142

**DIVERSOS: 1952214** NTI: 003486 | SCANIA: 1952214



REP. CANECA CAMBIO 111/2/3  
REPARO CANECA CAMBIO 111/112  
GEARBOX TRANSFER HOUSING REPAIR KIT  
111/2/3



CANECA REDUZIDA 111/112  
CILINDRO DEL CAMBIO 111/112  
REDUCTION GEAR HOUSING 111/112

DIVERSOS: - | SCANIA: 110, 111, LK140, LK141, R112, R113, R142, R143, T112, T113, T142

**DIVERSOS: 1345149 X** NTI: 011231 | SCANIA: 1334036 X, 1345149 X, 1903798 X



REP. CANECA REDUZ. 06 MARCHAS 113/S.4  
REPARACION  
REDUCTION GEAR HOUSING REPAIR KIT



CANECA REDUZIDA 06 MARCHAS 94/114/24/  
64  
VALVULA  
REDUCTION GEAR HOUSING 890/900 94/114/  
24/64

DIVERSOS: - | SCANIA: 114, 124, 164, 94, K113, K114, K124, K94, P.G.R., P93, R113, R143, T113



**DIVERSOS: 1526817 VX**

NTI: 007721 | VOLVO: 1526817 VX, 1527355 VX



REP. CANECA REDUZ. CX. CAMBIO 16S 130/  
160/1650 ZF  
ANILLA VEDACION  
REDUCTION GEAR HOUSING REPAIR KIT



CANECA REDUZIDA NH/FH  
CARCAZA REDUCIDA NH/FH  
REDUCTION GEAR HOUSING NH/FH

DIVERSOS: - | VOLVO: EDC, FH, FH12, NH12, NL10, NL12

**DIVERSOS: 3092575 V**

NTI: 017474 | VOLVO: 3092575 V



REP. CANECA REDUZ. CX. CAMBIO FH12/16/  
FM  
REP. CANECA REDUZ. CX. CAMBIO FH12/16/  
FM  
REDUCTION GEARBOX HOUSING REPAIR KIT  
FH



CILINDRO SPLIT CX.CAMBIO VT FH/FM/VM  
CILINDRO SPLIT CX.CAMBIO VT FH/FM/VM  
CYLINDER HOUSING FOR GEAR BOX VT FH/  
FN/VM

DIVERSOS: - | VOLVO: EDC, FH12, FH16, FM12, NH12, NL10, NL12

**DIVERSOS: 0069976447**

NTI: 023186 | MERCEDES: 0069976447



REP. CANECA REDUZIDA MBB  
REP. CANECA REDUZIDA MBB  
REPAIR KIT FOR REDUCTION SPEED



CIL. REDUZIDA  
CIL. REDUZIDA  
SHIFT CYLINDER

DIVERSOS: - | MERCEDES: TODOS VEICULOS COM CAMBIO G210/G221/G240

**DIVERSOS: 1321420 XV**

NTI: 013647 | SCANIA: 1320420 XV, 1321420 XV, 1326847 XV, 1345151 XV, 1484808 XV, 1484809 XV, 1903797 XV, 1953495 XV



REP. CANECA TRANSF. 06/08 MARCHAS 113/  
S.4 =VITON=  
REPARACION  
GEAR BOX TRANSFER HOUSING REPAIR KIT  
113

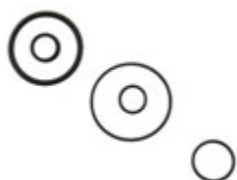


CANECA TRANSF. 06/08 MARCHAS 113/S4  
CILINDRO  
TRANSFER GEAR HOUSING

DIVERSOS: - | SCANIA: 114, 124, 164, 94, K113, K114, K124, K94, P.G.R., P93, R113, R143, T113

**DIVERSOS: 1321420 X**

NTI: 004241 | SCANIA: 1320420 X, 1321420 X, 1326847 X, 1345151 X, 1484808 X, 1484809 X, 1903797 X, 1953495 X



REP. CANECA TRANSF. 06/08 MARCHAS 113/  
S4  
REPARACION  
GEARBOX TRANSFER HOUSING REPAIR KIT



CANECA TRANSF. 06/08 MARCHAS 113/S4  
CILINDRO  
TRANSFER GEAR HOUSING

DIVERSOS: - | SCANIA: 114, 124, 164, 94, K113, K114, K124, K94, P.G.R., P93, R113, R143, T113

**DIVERSOS: 1527463 VX**

NTI: 007724 | VOLVO: 1527363 VX, 1527463 VX



REP. CANECA TRANSF. CAMBIO 16S130/160/  
1650 ZF  
ANILLO CAMBIO  
GEARBOX TRANSFER REPAIR KIT



CANECA TRANSF. N/NL10/12/EDC  
CARCAZA CILINDRO TRANSFERENCIA  
TRANSFER GEAR BOX HOUSING N/NL10/12/  
EDC

DIVERSOS: - | VOLVO: EDC, FH12, FM12, NH12, NL10, NL12



**DIVERSOS: 002670197** | NTI: 023183 | MERCEDES: 002670197



REP. CANECA TRANSF. CAMBIO MBB  
 REP. CANECA TRANSF. CAMBIO MBB  
 GEARBOX REDUCTION HOUSING REPAIR KIT



CANECA TRANSFERENCIA  
 CANECA TRANSFERENCIA  
 TRANSMISSION COVER

DIVERSOS: - | MERCEDES: TODOS VEICULOS COM CAMBIO G210/G221/G240

**DIVERSOS: 0750112253** | NTI: 016387 | NTI: 022849 | ZF: 0750112253



REP. CANECA TRANSF. CAMBIO ZF  
 KIT REPARACION CARCAZA CILINDRO DE  
 TRANSF.  
 GEAR BOX TRANSFER HOUSING REPAIR KIT

DIVERSOS: - | IVECO: EUROTECH, EUROTRAKKER, NOVO STRALIS, NOVO TRAKKER, STRALIS, TRAKKER

**DIVERSOS: 3093230 V** | NTI: 017478 | VOLVO: 1652751 V, 20365523 V, 276820 V, 3092050 V, 3093230 V



REP. CANECA TRANSF. CX. CAMBIO VT  
 REP. CANECA TRANSF. CX. CAMBIO VT  
 GEARBOX TRANSFER HOUSING REPAIR KIT



CANECA TRANSFERENCIA FH/NH  
 CANECA TRANSFERENCIA FH/NH  
 TRANSFER GEAR BOX HOUSING

DIVERSOS: - | VOLVO: B10B, B10R, B12, B12B, B12M, B7R, B9R, F10, F12, FH, FH12, FH12J, FH16, FL10, FL12, FL6, FL616, FL619, FL7, FM, FM12, FM9, FS7, N10, NH12, NL10, NL10 AUS., NL12, NL12 AUS., VM

**DIVERSOS: 0002670197** | NTI: 023829 | MERCEDES: 0002670197



REP. CANECA TRANSF. MBB  
 REP. CANECA TRANSF. MBB  
 GEARBOX HOUSING REPAIR KIT MBB



CANECA TRANSFERENCIA  
 CANECA TRANSFERENCIA  
 TRANSMISSION COVER

DIVERSOS: - | MERCEDES: TODOS VEICULOS COM CAMBIO G210/G221/G240

**DIVERSOS: 1769778 R** | NTI: 024230 | SCANIA: 1769778 R, 2090529 R, 2181643 R



REP. CANECA TRANSF. OPTICRUISE  
 REP. CANECA TRANSF. OPTICRUISE  
 GEAR BOX REPAIR KIT OPTICRUISE



CIL. TRANSF. OPTICRUISE (MODELO NOVO)  
 CIL. TRANSF. OPTICRUISE (MODELO NOVO)  
 CIL. TRANSF. OPTICRUISE (MODELO NOVO)

DIVERSOS: - | SCANIA: F/K/N ONIBUS, P.G.R.

**DIVERSOS: 1764085** | NTI: 010204 | SCANIA: 1764085



REP. CIL. ACION. EMBREAGEM =ESCRAVO= 114  
 KIT REPARACION CILINDRO SERVO EMBRAGUE 114  
 SLAVE CLUTCH CYLINDER REPAIR KIT



CIL. EMBR. S.4 =CX.GR801/GRS890/GRS900/920=  
 CILINDRO ACION. EMBRAGUE - SERIE 4  
 CLUTCH CYLINDER S4

DIVERSOS: - | SCANIA: 114, 124, 164, 94, K114, K124, K94, P.G.R.



**DIVERSOS: 1764082**

NTI: 014715 | SCANIA: 1764082



REP. CIL. ACION. EMBREAGEM S.4  
REP. CIL. ACIONAM. EMBRAGUE  
CLUTCH ACTUATOR CYLINDER REPAIR KIT  
S.4



CIL. EMBR. S.4 =CX.GR801/GRS890/GRS900/  
920=  
CILINDRO ACION. EMBRAGUE - SERIE 4  
CLUTCH CYLINDER S4

DIVERSOS: - | SCANIA: 114, 124, 164, 94, K114, K124, K94, P.G.R.

**DIVERSOS: 41211007**

NTI: 016426 | IVECO: 41211007



REP. CIL. ACION. EMBREAGEM STRALIS/HD/  
NR  
REP. CIL. ACION. EMBREAGEM STRALIS/HD/  
NR  
CLUTCH CYLINDER REPAIR KIT



CIL. EMBR. C/ RESERV. E SENSOR STRALIS/  
TRAKKE/TECH  
CIL. EMBR. C/ RESERV. E SENSOR STRALIS/  
TRAKKE/TECH  
CLUTCH CYLINDER W/ RESERVOIR AND  
SENSOR

DIVERSOS: - | IVECO: EUROCARGO, EUROTECH, EUROTRAKKER, NOVO STRALIS, NOVO TRAKKER, STRALIS, TRAKKER

**DIVERSOS: 1342106**

NTI: 016163 | SCANIA: 1342106, 550550



REP. CIL. ACUMULADOR RETARDER  
REP. CIL. ACUMULADOR RETARDER  
CYLINDER ACCUMULATOR W/ RETARDER  
REPAIR KIT



ACUMULADOR OLEO S.4  
ACUMULADOR OLEO S.4  
OIL SEALMULATOR

DIVERSOS: - | SCANIA: 114, 124, 164, 94, K114, K124, K94

**DIVERSOS: 1433655**

NTI: 012508 | SCANIA: 1433655, 1541982



REP. CIL. BASCULAR CABINE S.4  
KIT REPARO CIL. LEVANTE CABINA  
CABIN CYLINDER REPAIR KIT



CILINDRO HIDR. BASCUL. CAB. CR (TETO  
ALTO) P.G.R.T  
CILINDRO HIDR. BASCUL. CAB. CR (TETO  
ALTO) P.G.R.T  
CABIN TILT CYLINDER P.G.R.T

DIVERSOS: - | SCANIA: 114, 124, 164, 94, P.G.R.

**DIVERSOS: 1369053**

NTI: 013003 | SCANIA: 1369053



REP. CIL. BASCULAR CABINE S.4  
KIT REPARO CIL. LEVANTE CABINA  
CABIN CYLINDER REPAIR KIT



CILINDRO HIDR. BASCUL. CAB. CR (TETO  
ALTO) P.G.R.T  
CILINDRO HIDR. BASCUL. CAB. CR (TETO  
ALTO) P.G.R.T  
CABIN TILT CYLINDER P.G.R.T

DIVERSOS: - | SCANIA: 114, 124, 164, 94, P.G.R.

**DIVERSOS: 1881850**

NTI: 020391 | SCANIA: 1846430, 1881850



REP. CIL. CURSO LONGITUDINAL S.4  
REP. CIL. CURSO LONGITUDINAL S.4  
BRAKE CYLINDER REPAIR KIT S4



CILINDRO COMANDO CAMBIO  
CILINDRO COMANDO CAMBIO  
CILINDRO COMANDO CAMBIO

DIVERSOS: - | SCANIA: 114, 124, 164, 94, K114, K124, K94, P.G.R.



**DIVERSOS: 273660 V**

NTI: 002531 | VOLVO: 273660 V, 8127721 V



REP. CIL. EMBREAGEM  
KIT CILINDRO EMBRAGUE  
CLUTCH CYLINDER REPAIR KIT



CIL. MESTRE EMBREAGEM/NL10/12 B10M/12/58  
CILINDRO DE EMBRAGUE  
CLUTCH MASTER CYLINDER N/NL10/12 B10M/12/58

DIVERSOS: - | VOLVO: B10, B10M, B58, N10, N12, NL10, NL12

**DIVERSOS: 550464**

NTI: 003499 | NTI: 003267 | SCANIA: 550464



REP. CIL. EMBREAGEM 112HW/113  
REPARO CIL. EMBRAGUE 112HW/113  
CLUTCH CYLINDER REPAIR KIT 112HW/113



CIL. MESTRE EMBREAGEM 113 =ALUMINIO=  
CILINDRO EMBRAGUE 113  
CLUTCH MASTER CYLINDER 113 ALUMINUM

DIVERSOS: - | SCANIA: F113, P93, R113, R143, T113

**DIVERSOS: 3094730 V**

NTI: 018964 | VOLVO: 276833 V, 3094523 V, 3094730 V



REP. CIL. EMBREAGEM FH12/NH/12  
KIT CILINDRO EMBRAGUE  
CLUTCH CYLINDER REPAIR KIT



CIL. MESTRE EMBREAGEM FH /NH12/B12R  
CILINDRO EMBRAGUE FH  
CLUTCH MASTER CYLINDER FH/NH/FM

DIVERSOS: - | VOLVO: B12M, B7R, FH12, FM12, FM7, NH12

**DIVERSOS: 1927829 XA**

NTI: 026205 | SCANIA: 1927829 XA



REP. CIL. MASTER EMB. P.G.R.T (PISTAO ALUMINIO)  
REP. CIL. MASTER EMB. P.G.R.T (PISTAO ALUMINIO)  
CLUTCH MASTER CYLINDER P.G.R.T.



CIL. MASTER EMBREAGEM P.G.R.T  
CIL. MASTER EMBREAGEM P.G.R.T  
CLUTCH MASTER CYLINDER P.G.R.T.

DIVERSOS: - | SCANIA: PGR-OPTICRUISE C/PED

**DIVERSOS: 1927829 X**

NTI: 019271 | SCANIA: 1927829 X



REP. CIL. MASTER EMBREAGEM P.G.R.T  
REP. CIL. MASTER EMBREAGEM P.G.R.T  
CLUTCH MASTER CYLINDER P.G.R.T.



CIL. MASTER EMBREAGEM P.G.R.T  
CIL. MASTER EMBREAGEM P.G.R.T  
CLUTCH MASTER CYLINDER P.G.R.T.

DIVERSOS: - | SCANIA: PGR-OPTICRUISE C/PED

**DIVERSOS: 1405803 R**

NTI: 025839 | SCANIA: 1405803 R



REPARO CILINDRO CAMBIO OPTCRUISE P.G.R.  
REPARO CILINDRO CAMBIO OPTCRUISE P.G.R.  
GEAR BOX CYLINDER REP. KIT P.G.R.



CIL. CAMBIO OPTCRUISE P.G.R.  
CIL. CAMBIO OPTCRUISE P.G.R.  
GEAR BOX CYLINDER REP. KIT P.G.R.

DIVERSOS: - | SCANIA: F/K/N ONIBUS, P.G.R., P.G.R.S.



DIVERSOS: 26000

NTI: 024435 | IVECO: 26000



SENSOR C/2 PLUGS P/CIL. DIAM. 31,75 (IVECO)  
 SENSOR C/2 PLUGS P/CIL. DIAM. 31,75 (IVECO)  
 FRONT CYLINDER REP. KIT W/ TWO CONNECTORS



CIL. EMBR. C/ RESERV. E SENSOR STRALIS/ TRAKKE/TECH  
 CIL. EMBR. C/ RESERV. E SENSOR STRALIS/ TRAKKE/TECH  
 CLUTCH CYLINDER W/ RESERVOIR AND SENSOR

DIVERSOS: - | IVECO: CURSOR, EUROCARGO, EUROTECH, EUROTRAKKER, NOVO STRALIS, NOVO TRAKKER, STRALIS, TRAKKER

DIVERSOS: 1321239

NTI: 009242 | SCANIA: 1321239



TAMPA CANECA REDUZ. 8 MARC. 93/113/43/S. 4  
 PIEZA INTERMEDIA  
 COVER REDUCTION GEAR BOX HOUSING 93/113/43/S



CANECA TRANSF. 06/08 MARCHAS 113/S4 CILINDRO  
 TRANSFER GEAR HOUSING

DIVERSOS: - | SCANIA: 114, 124, 164, 94, K113, K114, K124, K94, P.G.R., P93, R113, R143, T113



**DIVERSOS: 0002902112 X**

NTI: 015254 | MERCEDES: 0002902112 X



REP. SERVO EMBR.(GRAU)  
REP. SERVO EMBR.(GRAU)  
CLUTCH SERVO REPAIR KIT



SERVO DE EMBREAGEM GRAU  
SERVO DE EMBREAGEM GRAU  
SERVO DE EMBREAGEM GRAU

DIVERSOS: - | MERCEDES: OF1318, OF1620, OH1318, OH1620, UNIMOG U 1850, UNIMOG U 1850L, UNIMOG U 2100, UNIMOG U 2100T, UNIMOG U 2150, UNIMOG U 2150L, UNIMOG U 2400, UNIMOG U 2400TG, UNIMOG U 2450, UNIMOG U 2450L

**DIVERSOS: K628492AM I**

NTI: 017175 | VOLVO: 1672129 VI, 20524584 VI, 8171720 VI, K628492AM VI



SERVO EMBR. =HASTE CURTA= FH/FM/NH12/  
VT2014  
SERVO EMBR. =HASTE CURTA= FH/FM/NH12/  
VT2014  
CLUTCH SERVO FH/FM/NH12/VT2 (SHORT  
ROD)

DIVERSOS: - | VOLVO: FH12, FH16, FM12, NH12, VM 310, VM 330

**DIVERSOS: 8171721 VI**

NTI: 017176 | VOLVO: 20524585 VI, 22317371 VI, 3192126 VI, 8171721 VI



SERVO EMBR. =HASTE LONGA= NH/FM/FH12  
SERVO EMBR. =HASTE LONGA= NH/FM/FH12  
CLUTCH SERVO NH/FM/FH12 (LONG ROD)

DIVERSOS: - | VOLVO: B12B, B12M, FH IMPORTADO, FH12, FH16, FM10, FM12, FM7, FM9, NH12

**DIVERSOS: 360717**

NTI: 001611 | SCANIA: 10575182, 10575185, 1747894, 298953, 338923, 345159, 360717, 360719



SERVO EMBR. 100MM 112  
SERVO DE EMBRAGUE 112  
CLUTCH SERVO 100MM 112

DIVERSOS: - | SCANIA: F112, K112, R112, R142, T112, T142

**DIVERSOS: 371612 I**

NTI: 016126 | SCANIA: 1331770 I, 1747895 I, 371612 I, 374116 I



SERVO EMBR. 110MM 112/3  
SERVO DE EMBRAGUE  
CLUTCH SERVO 110M 112/3

DIVERSOS: - | SCANIA: F112, F113, K112, K113, L113, P93, R112, R113, R142, R143, T112, T113, T142

**DIVERSOS: 628277AM**

NTI: 026022 | KONGSBERG: 628277AM | NTI: 026401



SERVO EMBR. 80MM DAF/RENAULT  
SERVO EMBR. 80MM DAF/RENAULT  
CLUTCH SERVO DAF/IVECO/RENAULT

DAF: CF75 | DAF: CF75 | DIVERSOS: -



**DIVERSOS: 5801784907**

NTI: 021653 | IVECO: 5801784907, 5949890257 | NTI: 021654



SERVO EMBR. 80MM VERTIS  
SERVO DE EMBRAGUE 80MM VERTIS  
CLUTCH SERVO 80MM VERTIS

DIVERSOS: - | IVECO: 130V18 VERTIS CAMINHAO 4X2, 130V19 VERTIS CAMINHAO ECOLINE 4X2, 90V16 VERTIS CAMINHAO 4X2, 90V18 VERTIS CAMINHAO 4X2

**DIVERSOS: 1671953 VI**

NTI: 016822 | NTI: 027281 | VOLVO: 1521371 VI, 1655435 VI, 1668501 VI, 1671953 VI, 85003219 VI



SERVO EMBR. B7R/B10R/B10M/EDC =  
INJETADO=  
SERVO EMBRAGUE B-10R  
CLUTCH SERVO B7R/B10R/B10M/EDC 95MM

DIVERSOS: - | VOLVO: FH IMPORTADO, VM 270

**DIVERSOS: 371612 B**

NTI: 016462 | SCANIA: 1331770 B, 1747895 B, 371612 B, 374116 B



SERVO EMBR. C/ COTOV. 45 - 110MM 112/3  
SERVO EMBRAGUE 112/113  
CLUTCH SERVO 110MM (ELBOW 45\$)

DIVERSOS: - | SCANIA: F112, F113, K112, K113, L113, P93, R112, R113, R142, R143, T112, T113, T142

**DIVERSOS: 9700511640**

NTI: 014576 | MERCEDES: 0002951318, 9700511640



SERVO EMBR. CARCACA LONGA TP WABCO  
SERVO EMBRAGUE  
CLUTCH SERVO LONG HOUSING WABCO

DIVERSOS: - | MERCEDES: L2638, LK2638, LS1938, LS2638, O371 RS, O371 RSD, O371 SRE, O400, O400 RS, O400 RSD, O400 RSE, O400 RSL, O400 UP, OH1625 L, OH1628 L, OH1635 L

**DIVERSOS: 629300AM**

NTI: 026021 | KONGSBERG: 629300AM | NTI: 026708



SERVO EMBR. DAF  
SERVO EMBR. DAF  
CLUTCH SERVO DAF

DIVERSOS: - | RENAULT: KERAX, MAGNUM, MAXTER, PREMIUM

**DIVERSOS: 1069205 VI**

NTI: 016820 | VOLVO: 1069205 VI



SERVO EMBR. FH12 (P/VEIC. IMP.) =  
INJETADO=  
SERVO EMBRAGUE FH12  
CLUTCH SERVO FH 12

DIVERSOS: - | VOLVO: FH12, FM10, FM12, NH12, NL10, NL12



DIVERSOS: 1421186 I

NTI: 018469 | SCANIA: 1367453, 1421186, 1454590, 1469161, 1513717



SERVO EMBR. INJETADO 114  
SERVO EMBRAGUE 114  
CLUTCH SERVO 114

DIVERSOS: - | SCANIA: 114, 124, 164, 94, F94, K114, K124, K94, P.G.R.

DIVERSOS: 9700512270

NTI: 015449 | NTI: 017158 | WABCO: 9700512270, 9700512310



SERVO EMBR. IVECO N. STRALIS 410/460 =  
HASTE CURTA=  
SERVO EMBRAGUE IVECO NUEVO STRALIS  
CLUTCH SERVO IVECO STRALIS 410/460

DIVERSOS: - | IVECO: -, NOVO STRALIS

DIVERSOS: 6310361AM

NTI: 026025 | KONGSBERG: 630361AM, 6310361AM



SERVO EMBR. MAN TGA/DAF  
SERVO EMBR. MAN TGA/DAF  
CLUTCH SERVO MAN TGA/DAF

DIVERSOS: - | MAN: TGA

DIVERSOS: 1655639 V

NTI: 003254 | VOLVO: 1526523 V, 1655639 V, 1673067 V, 267321 V, 267532 V, 8112202 V



SERVO EMBR. N/NL-10/12/B10/58 =80MM  
INTERNO=  
SERVO EMBRAGUE  
CLUTCH SERVO N/NL10/12/B10/58 80MM

DIVERSOS: - | VOLVO: B10M, B58E, N10, N12, NL10, NL12

DIVERSOS: 1493461

NTI: 018855 | NTI: 022561 | SCANIA: 1493461, 1523399, 1784480, 1927825, 2555088



SERVO EMBR. P.G.R.T  
SERVO DE EMBRAGUE P.G.R.T  
CLUTCH SERVO P.G.R.T.

DIVERSOS: - | SCANIA: PGR-OPTICRUISE C/PED

DIVERSOS: 9700512320

NTI: 017830 | IVECO: 5801613805, 9700512320



SERVO EMBR. TRAKKER =HASTE LONGA=  
SERVO EMBR. TRAKKER =HASTE LONGA=  
CLUTCH SERVO TRAKKER (SHORT ROD)

DIVERSOS: - | IVECO: NOVO TRAKKER



DIVERSOS: 42568691

NTI: 024573 | IVECO: 42560762, 42561466, 42568691, 42569800 | NTI: 024720, 024880, 027282, 027319, 027320



SERVO EMBREAGEM -STRALIS=  
SERVO EMBREAGEM -STRALIS=  
CLUTCH SERVO IVECO STRALIS

DIVERSOS: - | IVECO: NOVO STRALIS, NOVO TRAKKER | MAN: TGA, TGM

DIVERSOS: 2023059

NTI: 025401 | SCANIA: 10572941, 10572946, 10572951, 10574929, 10574930, 10574936, 1849429, 1931444, 2023059, 2037304, 2082082...



SERVO EMBREAGEM ECA  
SERVO EMBREAGEM ECA  
SERVO EMBREAGEM ECA

DIVERSOS: - | SCANIA: C/K (20/...), F/K/N ONIBUS, L.P.G.R.S., P.G.R.

DIVERSOS: 85002040 V

NTI: 024760 | NTI: 026024 | VOLVO: 22085052 V, 22085058 V, 23105448 V, 23105541 V, 85002040 V, 85008040 V



SERVO EMBREAGEM FH/FM  
SERVO EMBREAGEM FH/FM  
CLUTCH SERVO VOLVO FH/FM

DIVERSOS: - | VOLVO: FH, FM

DIVERSOS: 2T2721261E

NTI: 027234 | MAN: 2T2721261E | NTI: 027238



SERVO EMBREAGEM MAN  
SERVO EMBREAGEM MAN  
CLUTCH SERVO MAN

DIVERSOS: - | MAN: 13.190 WORKER EURO V, 15.190 WORKER EURO V, 17.190 WORKER EURO V, 17.230 WORKER EURO V, 17.330 ADVANTECH, 19.330T ADVANTECH, 23.230 WORKER EURO V, 24.330 ADVANTECH, 25.330T ADVANTECH, 26.330T ADVANTECH, 26.360T ADVANTECH, 26.390T ADVANTECH, 26.420T ADVANTECH, 31.330 ADVANTECH, 31.390 ADVANTECH

DIVERSOS: 9700516420

NTI: 025059 | NTI: 025060, 025882 | WABCO: 9700516420



SERVO EMBREAGEM MAN  
SERVO EMBREAGEM MAN  
CLUTCH SERVO MAN REP. KIT W/COVER

DIVERSOS: - | MAN: 10.160 ADVANTECH MAN, 10.160PLUS DELIVERY, 13.190 ADVANTECH MAN, 13.190 WORKER EURO V, 15.190 ADVANTECH MAN, 15.190 OD EURO 5 MAN, 15.190 WORKER EURO V, 17.190 ADVANTCH MAN, 17.190 WORKER EURO V, 17.230 ADVANTECH MAN, 17.230 WORKER EURO V, 17.280 ADVANTECH MAN, 23.230 WORKER EURO V, 23.330 ADVANTECH MAN, 24.280 ADVANTECH MAN, 26.280 ADVANTECH MAN, 31.280 ADVANTECH MAN, 5.150 ADVANTECH MAN, 5.150 OD, 8.160 ADVANTECH MAN, 8.160 DELIVERY, 8.160 OD, 9.160 ADVANTECH MAN, 9.160 DELIVERY, 9.160 OD



**DIVERSOS: 5801317166** | NTI: 023897 | IVECO: 504143812, 5801317166, 5801574722



SERVO MID EMBREAGEM TECTOR (6X2)  
SERVO MID EMBREAGEM TECTOR (6X2)  
CLUTCH SERVO MID TECTOR (6X2)

DIVERSOS: - | IVECO: EUROCARGO, TECTOR

**DIVERSOS: 2023059 C** | NTI: 027974 | SCANIA: 1931444 C, 2023059 C, 2037304 C, 2082082 C, 2131963 C, 2290706 C, 2392193 C, 2392281 C, 2441305 C, 24505...



CHICOTE SERVO EMBREAGEM ECA  
CHICOTE SERVO EMBREAGEM ECA  
CHICOTE SERVO EMBREAGEM ECA



SERVO EMBREAGEM ECA  
SERVO EMBREAGEM ECA  
SERVO EMBREAGEM ECA

DIVERSOS: - | SCANIA: C/K (20/...), F/K/N ONIBUS, L.P.G.R.S., P.G.R.

**DIVERSOS: 1316051835 C** | NTI: 024238 | ZF: 1316051835 C



CORPO PNEUM. SERVO SHIFT  
CORPO PNEUM. SERVO SHIFT  
CLUTCH SERVO SHIFT PNEUMATIC HOUSING



SERVO SHIFT ZF  
SERVO SHIFT ZF  
CLUTCH SERVO SHIFT ZF TYPE

DIVERSOS: - | IVECO: EUROTECH, EUROTRAKKER, NOVO STRALIS, STRALIS, TRAKKER | VW: 19.320E CONSTELLATION, 19.370 CONSTELLATION, 25.320 CONSTELLATION, 25.370E CONSTELLATION, 26.260 CONSTELLATION, 31.260 CONSTELLATION, 31.320E CONSTELLATION, 31.370E CONSTELLATION

**DIVERSOS: 23016** | NTI: 009999 | FREIOS: 23016



FLUIDO DE FREIO (DOT4) =500ML=  
FLUIDO FRENO (DOT4) =500ML=  
BRAKE FLUID (DOT4) =500ML=

DIVERSOS: - | FREIOS: TODOS OS VEICULOS

**DIVERSOS: 23037** | NTI: 018664 | FREIOS: 23037



FLUIDO DE FREIO (DOT5.1) = 500ML =  
FLUIDO FRENO (DOT4) =500ML=  
BRAKE FLUID (DOT4) =500ML=

DIVERSOS: - | FREIOS: TODOS OS VEICULOS

**DIVERSOS: 389894** | NTI: 002989 | SCANIA: 389894



HASTE SERVO EMBREAGEM 112HW/113  
TIRANTE SERVO EMBRAGUE 112HW/113  
ROD CLUTCH SERVO 112HW/113



SERVO EMBR. 110MM 112/3  
SERVO DE EMBRAGUE  
CLUTCH SERVO 110M 112/3

DIVERSOS: - | SCANIA: 112 HW, F112, F113, K112, K113, L113, P93, R112, R113, R142, R143, T112, T113, T142



DIVERSOS: 23814

NTI: 023814 | ZF: 23814

HASTE SERVO SHIFT (MAIOR)  
HASTE SERVO SHIFT (MAIOR)  
CLUTCH SERVO BIG SHAFT



SERVO SHIFT ZF  
SERVO SHIFT ZF  
CLUTCH SERVO SHIFT ZF TYPE

DIVERSOS: - | IVECO: EUROTECH, EUROTRAKKER, NOVO STRALIS, STRALIS, TRAKKER | MERCEDES: ATEGO1729HD, ATEGO1730S, ATEGO2426, ATEGO2430, ATEGO3030 | VW: 10.160 DELIVERY, 17.280, 19.320E CONSTELLATION, 19.370 CONSTELLATION, 24.280, 25.320 CONSTELLATION, 25.370E CONSTELLATION, 26.260 CONSTELLATION, 31.260 CONSTELLATION, 31.320E CONSTELLATION, 31.370E CONSTELLATION

DIVERSOS: 24872

NTI: 024872 | ZF: 24872

HASTE SERVO SHIFT (MENOR)  
HASTE SERVO SHIFT (MENOR)  
CLUTCH SERVO SHIFT SHAFT (SMAL) TYPE



SERVO SHIFT ZF  
SERVO SHIFT ZF  
CLUTCH SERVO SHIFT ZF TYPE

DIVERSOS: - | IVECO: STRALIS | MAN: TGX | RENAULT: PREMIUM | VW: 17.280, 19.330, 19.370, 24.280, 25.370, 31.330, 31.370E

DIVERSOS: 22809232 VR

NTI: 026334 | VOLVO: 22809232 VR



REP. ATUADOR EMB. I-SHIFT PARCIAL (S/  
TRAVA)  
REP. ATUADOR EMB. I-SHIFT PARCIAL (S/  
TRAVA)  
CLUTCH PARTIAL REP.KIT ACTUATOR I-  
SHIFT W/O LOCKER



CILINDRO ATUADOR FH/FM =CAMBIO  
AUTOMATICO=  
CILINDRO ATUADOR FH/FM =CAMBIO  
AUTOMATICO=  
RELEASE BEARING AUTOMATIC GEAR BOX  
FH/FM

DIVERSOS: - | VOLVO: B11R, B12B, B12M, B12R, B13R, B9R, FH12, FH13, FM12, FM13, VM

DIVERSOS: 550456

NTI: 001957 | SCANIA: 550456



REP. PARCIAL SERVO EMBR. 110MM  
REPARO PARCIAL SERVO EMBRAGUE 110  
MM  
CLUTCH SERVO REPAIR KIT 110MM  
(PARTIAL)



SERVO EMBR. 110MM 112/3  
SERVO DE EMBRAGUE  
CLUTCH SERVO 110M 112/3

DIVERSOS: - | SCANIA: 112 HW, F112, F113, K112, K113, L113, P93, R112, R113, R142, R143, T112, T113, T142

DIVERSOS: 2023059 X

NTI: 025066 | SCANIA: 2023059 X, 2392193 X, 2612292 X



REP. SERVO ECA  
REP. SERVO ECA  
CLUTCH SERVO REP. KIT ECA



SERVO EMBREAGEM ECA  
SERVO EMBREAGEM ECA  
SERVO EMBREAGEM ECA

DIVERSOS: - | SCANIA: C/K (20/...), F/K/N ONIBUS, L.P.G.R.S., P.G.R., P.G.R.S.

DIVERSOS: 550465

NTI: 006544 | SCANIA: 1336159, 550465



REP. SERVO EMBR. 110 MM -RABICO  
COMPL.=  
KIT REP. SERVO-EMBRAGUE T-113  
CLUTCH SERVO REPAIR KIT 110MM



SERVO EMBR. 110MM 112/3  
SERVO DE EMBRAGUE  
CLUTCH SERVO 110M 112/3

DIVERSOS: - | SCANIA: F112, F113, K112, K113, L113, P93, R112, R113, R142, R143, T112, T113, T142

**DIVERSOS: 550465 A** | NTI: 024507 | SCANIA: 1336159 A, 550465 A



REP. SERVO EMBR. 110 MM =RABICO  
COMPL.= C/PISTAO  
KIT REP. SERVO-EMBRAGUE T-113  
CLUTCH SERVO REPAIR KIT 110MM



SERVO EMBR. 110MM 112/3  
SERVO DE EMBRAGUE  
CLUTCH SERVO 110M 112/3

DIVERSOS: - | SCANIA: F112, F113, K112, K113, L113, P93, R112, R113, R142, R143, T112, T113, T142

**DIVERSOS: 550465 P** | NTI: 016634 | SCANIA: 550465 P



REP. SERVO EMBR. 110 MM =RABICO  
PARCIAL=  
KIT REP. SERVO-EMBRAGUE T-113  
CLUTCH SERVO REPAIR KIT 110MM  
(PARTIAL)



SERVO EMBR. 110MM 112/3  
SERVO DE EMBRAGUE  
CLUTCH SERVO 110M 112/3

DIVERSOS: - | SCANIA: F112, F113, K112, K113, L113, P93, R112, R113, R142, R143, T112, T113, T142

**DIVERSOS: 1484715** | NTI: 006282 | SCANIA: 1484715



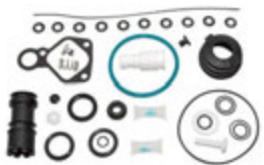
REP. SERVO EMBR. C/PISTAO =MOD.= 114/24  
REPARO CIL. 1.421.186  
CLUTCH SERVO REPAIR KIT (W/ PISTON) 114/  
24



SERVO EMBR. INJETADO 114  
SERVO EMBRAGUE 114  
CLUTCH SERVO 114

DIVERSOS: - | SCANIA: 114, 124, 164, 94, F94, K114, K124, K94, P.G.R.

**DIVERSOS: 1484715 E** | NTI: 017278 | SCANIA: 1484715 E



REP. SERVO EMBR. C/PISTAO =MOD.= 114/24  
ESPECIAL  
REPARO CIL. 1.421.186  
CLUTCH SERVO REPAIR KIT 114/24



SERVO EMBR. INJETADO 114  
SERVO EMBRAGUE 114  
CLUTCH SERVO 114

DIVERSOS: - | SCANIA: 114, 124, 164, 94, F94, K114, K124, K94, P.G.R.

**DIVERSOS: 1484715 X** | NTI: 018975 | SCANIA: 1484715 X



REP. SERVO EMBR. C/PISTAO =MOD.= 114/24  
EXPORT  
REPARO CIL. 1.421.186  
CLUTCH SERVO REPAIR KIT W/ PISTON  
(PARTIAL)



SERVO EMBR. INJETADO 114  
SERVO EMBRAGUE 114  
CLUTCH SERVO 114

DIVERSOS: - | SCANIA: 114, 124, 164, 94, F94, K114, K124, K94, P.G.R.

**DIVERSOS: 1484715 PE** | NTI: 018679 | SCANIA: 1484715 PE



REP. SERVO EMBR. C/PISTAO =MOD.= 114/24  
PARCIAL  
REPARO CIL. 1.421.186  
CLUTCH SERVO REPAIR KIT W/ PISTON  
(PARTIAL)



SERVO EMBR. INJETADO 114  
SERVO EMBRAGUE 114  
CLUTCH SERVO 114

DIVERSOS: - | SCANIA: 114, 124, 164, 94, F94, K114, K124, K94, P.G.R.



**DIVERSOS: 1484715 P**

NTI: 016635 | SCANIA: 1484715 P



REP. SERVO EMBR. C/PISTAO =MOD.= 114/24 PARCIAL  
 REPARO CIL. 1.421.186  
 CLUTCH SERVO REPAIR KIT W/ PISTON (PARTIAL)



SERVO EMBR. INJETADO 114  
 SERVO EMBRAGUE 114  
 CLUTCH SERVO 114

DIVERSOS: - | SCANIA: 114, 124, 164, 94, F94, K114, K124, K94, P.G.R.

**DIVERSOS: 1523399 R**

NTI: 018168 | SCANIA: 1523399 R, 1784480 R, 1927825 R, 2555088 R



REP. SERVO EMBR. DIAM. 125MM =CAMBIO OPTICRUISE=  
 REP. SERVO EMBR. DIAM. 125MM =CAMBIO OPTICRUISE=  
 CLUTCH SERVO REPAIR KIT 125MM OPTICRUISE GEARSHIFT



SERVO EMBR. P.G.R.T  
 SERVO DE EMBRAGUE P.G.R.T  
 CLUTCH SERVO P.G.R.T.

DIVERSOS: - | SCANIA: PGR-OPTICRUISE C/PED

**DIVERSOS: 3094550 V**

NTI: 006048 | VOLVO: 3093099 V, 3093100 V, 3094550 V



REP. SERVO EMBR. EDC/FH-12  
 REPARO SERVO EMBRAGUE  
 CLUTCH SERVO REPAIR KIT EDC/FH-12



SERVO EMBR. FH12 (P/VEIC. IMP.) = INJETADO=  
 SERVO EMBRAGUE FH12  
 CLUTCH SERVO FH 12

DIVERSOS: - | VOLVO: FH12, FM10, FM12, NH12, NL10, NL12

**DIVERSOS: 550453**

NTI: 001955 | NTI: 001953 | SCANIA: 550453



REP. SERVO EMBR. 100MM  
 REPARO SERVO EMBRAGUE 100 MM  
 CLUTCH SERVO REPAIR KIT 100 MM



SERVO EMBR. 100MM 112  
 SERVO DE EMBRAGUE 112  
 CLUTCH SERVO 100MM 112

DIVERSOS: - | SCANIA: F112, K112, R112, R142, T112, T142

**DIVERSOS: 550455**

NTI: 001956 | SCANIA: 550455



REP. SERVO EMBR. 110MM  
 REPARO SERVO EMBRAGUE 110 MM  
 CLUTCH SERVO REPAIR KIT 110 MM



SERVO EMBR. 110MM 112/3  
 SERVO DE EMBRAGUE  
 CLUTCH SERVO 110M 112/3

DIVERSOS: - | SCANIA: F112, F113, K112, K113, L113, P93, R112, R113, R142, R143, T112, T113, T142

**DIVERSOS: 3093098 V**

NTI: 014669 | VOLVO: 3093098 V



REP. SERVO EMBR. FH/NH/FM  
 REPARO SERVO EMBRAGUE  
 CLUTCH SERVO REPAIR KIT FH/NH/FM



SERVO EMBR. FH12 (P/VEIC. IMP.) = INJETADO=  
 SERVO EMBRAGUE FH12  
 CLUTCH SERVO FH 12

DIVERSOS: - | VOLVO: FH12, FM10, FM12, NH12, NL10, NL12



**DIVERSOS: 85102142 V** NTI: 009877 | VOLVO: 85102142 V



REP. SERVO EMBR.FH12  
JG. REPARACION  
CLUTCH SERVO REPAIR KIT FH12



SERVO EMBR. =HASTE CURTA= FH/FM/NH12/  
VT2014  
SERVO EMBR. =HASTE CURTA= FH/FM/NH12/  
VT2014  
CLUTCH SERVO FH/FM/NH12/VT2 (SHORT  
ROD)

DIVERSOS: - | VOLVO: FH12, FH16, FM12, NH12, VM 310, VM 330

**DIVERSOS: 85102142 VA** NTI: 012772 | VOLVO: 85102142 VA



REP. SERVO EMBR.FH12 C/PISTAO  
KIT REPARACION SERVO EMBRAGUE  
CLUTCH SERVO REPAIR KIT FH12 (W/  
PISTON)



SERVO EMBR. =HASTE CURTA= FH/FM/NH12/  
VT2014  
SERVO EMBR. =HASTE CURTA= FH/FM/NH12/  
VT2014  
CLUTCH SERVO FH/FM/NH12/VT2 (SHORT  
ROD)

DIVERSOS: - | VOLVO: FH12, FH16, FM12, NH12, VM 310, VM 330

**DIVERSOS: 85102142 VP** NTI: 016633 | VOLVO: 85102142 VP



REP. SERVO EMBR.FH12 PARCIAL  
JG. REPARACION  
CLUTCH SERVO REPAIR KIT (PARTIAL)



SERVO EMBR. =HASTE CURTA= FH/FM/NH12/  
VT2014  
SERVO EMBR. =HASTE CURTA= FH/FM/NH12/  
VT2014  
CLUTCH SERVO FH/FM/NH12/VT2 (SHORT  
ROD)

DIVERSOS: - | VOLVO: FH12, FH16, FM12, NH12, VM 310, VM 330

**DIVERSOS: 950321027** NTI: 017482 | HALDEX: 950321027



REP. SERVO EMBR.HALDEX  
REP. SERVO EMBR.HALDEX  
CLUTCH SERVO REPAIR KIT HALDEX



SERVO EMBREAGEM  
SERVO EMBREAGEM  
CLUTCH SERVO

DIVERSOS: - | MERCEDES: 1214C, 1218, 1317, 1318, 1414, 1517, 1518, 1614, 1618, 1714, 1718, 1933, 2318, 2418, 708, 812, 912, 917

**DIVERSOS: 6025003031003** NTI: 018680 | AGRALE: 6025003031003 R



REP. SERVO EMBR.KONSBURG AGRALE  
REP. SERVO EMBR.KONSBURG AGRALE  
CLUTCH SERVO REPAIR KIT KONSBURG

AGRALE: 10.000 4.8H MWM EURO V COM ABS, 14000, 6500, 8700, 8700TR, MA 10.0 BL MWM 4,8H EURO V, MA 9.2 BL MWM 4,8H EURO V | DIVERSOS: - | IVECO: 130V18 VERTIS CAMINHAO 4X2, 130V19 VERTIS CAMINHAO ECOLINE 4X2, 90V16 VERTIS CAMINHAO 4X2, 90V18 VERTIS CAMINHAO 4X2, VERTIS

**DIVERSOS: 271194 V** NTI: 003517 | VOLVO: 271194 V



REP. SERVO EMBR.NL10/NL12  
KIT SERVO EMBRAGUE  
CLUTCH SERVO REPAIR KIT N10



SERVO EMBR. N/NL-10/12/B10/58 =80MM  
INTERNO=  
SERVO EMBRAGUE  
CLUTCH SERVO N/NL10/12/B10/58 80MM

DIVERSOS: - | VOLVO: B10M, B58E, N10, N12, NL10, NL12



DIVERSOS: 5949890257 R

NTI: 017979 | IVECO: 5949890257 R



REP. SERVO EMBR.VERTIS  
 REP. SERVO EMBR.VERTIS  
 CLUTCH SERVO REPAIR KIT VERTIS



SERVO EMBR. 80MM VERTIS  
 SERVO DE EMBRAGUE 80MM VERTIS  
 CLUTCH SERVO 80MM VERTIS

DIVERSOS: - | IVECO: VERTIS

DIVERSOS: 0501217253 X

NTI: 024785 | ZF: 0501217253 X



REP. SERVO SHIFT MERCEDES (COMPTO)  
 REP. SERVO SHIFT MERCEDES (COMPTO)  
 CLUTCH SERVO REP. KIT MERCEDES  
 COMPLETE



SERVO SHIFT ZF  
 SERVO SHIFT ZF  
 CLUTCH SERVO SHIFT ZF TYPE

DIVERSOS: - | MAN: 10.160PLUS DELIVERY, 17.280, 24.280 | MERCEDES: ATEGO1729HD, ATEGO1730S, ATEGO2426, ATEGO2430, ATEGO3030

DIVERSOS: 0501216319 X

NTI: 025015 | ZF: 0501216319 X



REP.SERVO SHIFT O-500 MBB  
 REP.SERVO SHIFT O-500 MBB  
 SERVO REP. KIT SHIFT MBB O-500



SERVO SHIFT ZF  
 SERVO SHIFT ZF  
 CLUTCH SERVO SHIFT ZF TYPE

DIVERSOS: - | MERCEDES: ATEGO1730S, ATEGO2430, O500 TODOS | VW: 17.280

DIVERSOS: 9700516420 XA

NTI: 025434 | NTI: 026034 | WABCO: 9700516420 XA, 9700519702 XA



REPARO SERVO MAN =C/TAMPA=  
 REPARO SERVO MAN =C/TAMPA=  
 CLUTCH SERVO MAN W/COVER



SERVO EMBREAGEM MAN  
 SERVO EMBREAGEM MAN  
 CLUTCH SERVO MAN REP. KIT W/COVER

DIVERSOS: - | MAN: 10.160 ADVANTECH MAN, 10.160PLUS DELIVERY, 13.190 ADVANTECH MAN, 13.190 WORKER EURO V, 15.190 ADVANTECH MAN, 15.190 OD EURO 5 MAN, 15.190 WORKER EURO V, 17.190 ADVANTCH MAN, 17.190 WORKER EURO V, 17.230 ADVANTECH MAN, 17.230 WORKER EURO V, 17.280 ADVANTECH MAN, 23.230 WORKER EURO V, 23.330 ADVANTECH MAN, 24.280 ADVANTECH MAN, 26.280 ADVANTECH MAN, 31.280 ADVANTECH MAN, 5.150 ADVANTECH MAN, 5.150 OD, 8.160 ADVANTECH MAN, 8.160 DELIVERY, 8.160 OD, 9.160 ADVANTECH MAN, 9.160 DELIVERY, 9.160 OD

DIVERSOS: 0501211805

NTI: 024189 | ZF: 0501211805



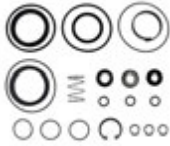
REPARO SERVO SHIFT COMPLETO  
 REPARO SERVO SHIFT COMPLETO  
 CLUTCH SERVO SHIFT REPAIR KIT



SERVO SHIFT ZF  
 SERVO SHIFT ZF  
 CLUTCH SERVO SHIFT ZF TYPE

DIVERSOS: - | IVECO: EUROTECH, EUROTRAKKER, NOVO STRALIS, NOVO TRAKKER, STRALIS, TRAKKER | VW: 19.320E CONSTELLATION, 19.370 CONSTELLATION, 25.320 CONSTELLATION, 25.370E CONSTELLATION, 26.260 CONSTELLATION, 31.260 CONSTELLATION, 31.320E CONSTELLATION, 31.370E CONSTELLATION

**DIVERSOS: 0501211805 P** NTI: 024479 | ZF: 0501211805 P



REPARO SERVO SHIFT PARCIAL  
REPARO SERVO SHIFT PARCIAL  
CLUTCH SERVO SHIFT PARTIAL R. KIT



SERVO SHIFT ZF  
SERVO SHIFT ZF  
CLUTCH SERVO SHIFT ZF TYPE

DIVERSOS: - | IVECO: EUROTECH, EUROTRAKKER, NOVO STRALIS, STRALIS, TRAKKER | VW: 19.320E CONSTELLATION, 19.370 CONSTELLATION, 25.320 CONSTELLATION, 25.370E CONSTELLATION, 26.260 CONSTELLATION, 31.260 CONSTELLATION, 31.320E CONSTELLATION, 31.370E CONSTELLATION

**DIVERSOS: 2825405** NTI: 027971 | SCANIA: 1878943, 2340075, 2825405



RESERVATORIO SERVO ECA  
RESERVATORIO SERVO ECA  
CLUTCH SERVO ECA RESERVOIR



SERVO EMBREAGEM ECA  
SERVO EMBREAGEM ECA  
SERVO EMBREAGEM ECA

DIVERSOS: - | SCANIA: C/K (20/...), F/K/N ONIBUS, L.P.G.R.S., P.G.R.

**DIVERSOS: 9700510010** NTI: 019441 | NTI: 022551 | WABCO: 9700510010, 9701500010



SERVO EMBR. MOD. ELETRONICO ACTROS/  
AXOR  
SERVO DE EMBRAGUE =ACTROS=  
CLUTCH SERVO =ACTROS=

DIVERSOS: - | MERCEDES: ACTROS 2546, ACTROS 2646, ACTROS 2655, ACTROS 4844, ACTROS TODOS COM CAMBIO AUTOMATICO, ATEGO TODOS COM CAMBIO AUTOMATICO, ATRON TODOS COM CAMBIO AUTOMATICO, AXOR TODOS COM CAMBIO AUTOMATICO



# CONTATOS / CONTACTS

**Vendas / Sales:** vendas@ntifreios.com.br  
**Geral / General:** cipec@cipec.com.br  
**Televendas / Telesales:** +55 19 3834.9822  
**Fax Gratuito / Fax Free:** 0800.707.9822  
**www.ntifreios.com.br**



## AGRALE

| Conversões      | N° NTI        | Pág. |
|-----------------|---------------|------|
| 6025003031003 R | <b>018680</b> | 49   |

## DAF

| Conversões | N° NTI        | Pág. |
|------------|---------------|------|
| 1389650    | <b>027312</b> | 33   |
| 1427141    | <b>027312</b> | 33   |
| 2046284    | <b>028140</b> | 32   |
| 2323315    | <b>028140</b> | 32   |
| 24055101   | <b>028140</b> | 32   |
| 501211290  | <b>027312</b> | 33   |

## DIVERSOS

| Conversões | N° NTI        | Pág. |
|------------|---------------|------|
|            | <b>003514</b> | 33   |

## FORD

| Conversões  | N° NTI        | Pág. |
|-------------|---------------|------|
| BC457A508BB | <b>024838</b> | 28   |

## FREIOS

| Conversões | N° NTI        | Pág. |
|------------|---------------|------|
| 23016      | <b>009999</b> | 45   |
| 23037      | <b>018664</b> | 45   |

## HALDEX

| Conversões | N° NTI        | Pág. |
|------------|---------------|------|
| 950321027  | <b>017482</b> | 49   |

## IVECO

| Conversões   | N° NTI        | Pág. |
|--------------|---------------|------|
| 26000        | <b>024435</b> | 40   |
| 41035502     | <b>017157</b> | 17   |
| 41035647     | <b>017157</b> | 17   |
| 41035649     | <b>017157</b> | 17   |
| 41211005     | <b>017550</b> | 28   |
| 41211007     | <b>016426</b> | 38   |
| 41211007 C   | <b>018092</b> | 28   |
| 41285167     | <b>024217</b> | 27   |
| 41285278     | <b>024217</b> | 27   |
| 41285311 C   | <b>018092</b> | 28   |
| 41285355     | <b>017550</b> | 28   |
| 42534474     | <b>026416</b> | 26   |
| 42536490     | <b>024690</b> | 19   |
| 42536490 R   | <b>023058</b> | 21   |
| 42557497     | <b>026416</b> | 26   |
| 42560762     | <b>024573</b> | 17   |
| 42561466     | <b>024573</b> | 17   |
| 42568691     | <b>024573</b> | 17   |
| 42569800     | <b>024573</b> | 17   |
| 43234474     | <b>026416</b> | 26   |
| 4854828      | <b>025927</b> | 29   |
| 504143812    | <b>023897</b> | 45   |
| 5801317166   | <b>023897</b> | 45   |
| 5801574722   | <b>023897</b> | 45   |
| 5801613805   | <b>017830</b> | 43   |
| 5801784907   | <b>021653</b> | 42   |
| 5802192366   | <b>017157</b> | 17   |
| 5949890257   | <b>021653</b> | 42   |
| 5949890257 R | <b>017979</b> | 50   |
| 9700512320   | <b>017830</b> | 43   |
| 98420498     | <b>017157</b> | 17   |

## IVECO

| Conversões | N° NTI        | Pág. |
|------------|---------------|------|
| 98438178   | <b>017157</b> | 17   |

## KNORR

| Conversões    | N° NTI        | Pág. |
|---------------|---------------|------|
| 75914710      | <b>019224</b> | 22   |
| 9481083004    | <b>004135</b> | 21   |
| 9481083004 P  | <b>009939</b> | 21   |
| 983455860343  | <b>007433</b> | 21   |
| II35696008    | <b>014716</b> | 19   |
| II35696008 A  | <b>015873</b> | 19   |
| II35696008 AP | <b>027211</b> | 19   |
| II35696008 P  | <b>027210</b> | 19   |
| K002173       | <b>023733</b> | 17   |
| K004297 C     | <b>016533</b> | 18   |
| K0107167      | <b>027972</b> | 17   |
| K0112700061   | <b>018826</b> | 16   |
| K0112700062   | <b>018243</b> | 16   |
| K0124040061   | <b>012370</b> | 20   |
| K0124040061 P | <b>016350</b> | 20   |
| K0124040062   | <b>021935</b> | 20   |
| K013727       | <b>024551</b> | 18   |
| K013727 P     | <b>024643</b> | 18   |
| K015222 R     | <b>017923</b> | 20   |
| K021874       | <b>022595</b> | 18   |
| K021874N00    | <b>022595</b> | 18   |
| K032123       | <b>027944</b> | 15   |
| K033409       | <b>018730</b> | 15   |
| K033411       | <b>019631</b> | 15   |
| K036633       | <b>018069</b> | 18   |
| K043961       | <b>019620</b> | 15   |
| SM1A05021     | <b>016407</b> | 20   |
| SM1PLA        | <b>022595</b> | 18   |
| VG3286        | <b>023733</b> | 17   |

## KONGSBERG

| Conversões | N° NTI        | Pág. |
|------------|---------------|------|
| 628277AM   | <b>026022</b> | 41   |
| 629300AM   | <b>026021</b> | 42   |
| 630361AM   | <b>026025</b> | 43   |
| 6310361AM  | <b>026025</b> | 43   |

## MAN

| Conversões  | N° NTI        | Pág. |
|-------------|---------------|------|
| 2T2721261E  | <b>027234</b> | 6    |
| 81307156152 | <b>025297</b> | 27   |

## MANN

| Conversões  | N° NTI        | Pág. |
|-------------|---------------|------|
| 81307156149 | <b>019618</b> | 30   |
| 81307156154 | <b>019618</b> | 30   |
| 81307156156 | <b>019618</b> | 30   |

## MERCEDES

| Conversões   | N° NTI        | Pág. |
|--------------|---------------|------|
| 0000721512   | <b>009598</b> | 32   |
| 0002670197   | <b>023829</b> | 37   |
| 0002902112 X | <b>015254</b> | 41   |
| 0002951318   | <b>014576</b> | 42   |
| 0012955906   | <b>012523</b> | 32   |
| 0012959106   | <b>017902</b> | 30   |
| 0022950206   | <b>017551</b> | 30   |
| 0022950806   | <b>017903</b> | 31   |

## MERCEDES

| Conversões   | N° NTI        | Pág. |
|--------------|---------------|------|
| 0022951607   | <b>024356</b> | 15   |
| 0022952507   | <b>025928</b> | 29   |
| 0022959106   | <b>017902</b> | 30   |
| 002670197    | <b>023183</b> | 37   |
| 0032501015   | <b>028138</b> | 33   |
| 0032502115   | <b>028138</b> | 33   |
| 0032503515   | <b>028138</b> | 33   |
| 0032507015   | <b>028138</b> | 33   |
| 0032508515   | <b>028143</b> | 33   |
| 0032508615   | <b>028138</b> | 33   |
| 0032509715   | <b>028138</b> | 33   |
| 0069976447   | <b>023186</b> | 36   |
| 0085860342   | <b>012981</b> | 21   |
| 3842950006   | <b>018810</b> | 32   |
| 3842957006   | <b>012516</b> | 31   |
| 3862957007   | <b>012524</b> | 31   |
| 3882957006   | <b>012525</b> | 31   |
| 510036410    | <b>028138</b> | 33   |
| 9452642127   | <b>025273</b> | 33   |
| 9700511640   | <b>014576</b> | 42   |
| 9792950006   | <b>024835</b> | 28   |
| 9792950006A  | <b>024835</b> | 28   |
| 9792950106   | <b>024836</b> | 29   |
| A0022952507  | <b>025928</b> | 29   |
| A0032501015  | <b>028138</b> | 33   |
| A0032502115  | <b>028138</b> | 33   |
| A0032503515  | <b>028138</b> | 33   |
| A0032507015  | <b>028138</b> | 33   |
| A0032508515  | <b>028143</b> | 33   |
| A0032508615  | <b>028138</b> | 33   |
| A0032509715  | <b>028138</b> | 33   |
| A3842950006  | <b>018810</b> | 32   |
| A9452642127  | <b>025273</b> | 33   |
| LUK510036410 | <b>028138</b> | 33   |

## NTI

| Conversões | N° NTI        | Pág. |
|------------|---------------|------|
| 001953     | <b>001955</b> | 48   |
| 003027     | <b>004109</b> | 13   |
| 003267     | <b>003499</b> | 39   |
| 003516     | <b>001730</b> | 15   |
| 004111     | <b>004109</b> | 13   |
| 006290     | <b>004109</b> | 13   |
| 006450     | <b>004110</b> | 12   |
| 012327     | <b>012370</b> | 20   |
| 013190     | <b>013189</b> | 5    |
| 013191     | <b>013189</b> | 5    |
| 013192     | <b>013189</b> | 5    |
| 017158     | <b>015449</b> | 6    |
| 017901     | <b>017900</b> | 4    |
| 018148     | <b>005084</b> | 4    |
| 018149     | <b>007404</b> | 4    |
| 018265     | <b>007404</b> | 4    |
| 018675     | <b>023811</b> | 11   |
| 018861     | <b>018730</b> | 15   |
| 019621     | <b>019620</b> | 15   |
| 021621     | <b>018243</b> | 16   |
| 021629     | <b>004560</b> | 23   |
| 021654     | <b>021653</b> | 42   |
| 021845     | <b>005081</b> | 3    |
| 021851     | <b>005095</b> | 27   |
| 021854     | <b>007404</b> | 4    |
| 021857     | <b>005094</b> | 3    |
| 022059     | <b>004109</b> | 13   |
| 022255     | <b>019631</b> | 15   |

## NTI

| Conversões | N° NTI | Pág. |
|------------|--------|------|
| 022536     | 017565 | 5    |
| 022551     | 019441 | 14   |
| 022559     | 018069 | 18   |
| 022561     | 018855 | 43   |
| 022563     | 017157 | 17   |
| 022579     | 021935 | 20   |
| 022585     | 001730 | 15   |
| 022608     | 001887 | 24   |
| 022617     | 004109 | 13   |
| 022625     | 004560 | 23   |
| 022630     | 005081 | 3    |
| 022631     | 005084 | 4    |
| 022634     | 005094 | 3    |
| 022636     | 005097 | 3    |
| 022662     | 005097 | 3    |
| 022670     | 007438 | 25   |
| 022671     | 007438 | 25   |
| 022672     | 007438 | 25   |
| 022690     | 006456 | 7    |
| 022692     | 007776 | 11   |
| 022693     | 007179 | 10   |
| 022694     | 007424 | 11   |
| 022695     | 007423 | 13   |
| 022708     | 001921 | 24   |
| 022711     | 007187 | 12   |
| 022715     | 007415 | 9    |
| 022726     | 007461 | 12   |
| 022744     | 019224 | 22   |
| 022775     | 019223 | 23   |
| 022787     | 006051 | 25   |
| 022788     | 006051 | 25   |
| 022789     | 006051 | 25   |
| 022790     | 006051 | 25   |
| 022797     | 006456 | 7    |
| 022846     | 015165 | 24   |
| 022847     | 015166 | 24   |
| 022848     | 003513 | 24   |
| 022849     | 016387 | 37   |
| 022857     | 019385 | 5    |
| 022858     | 014801 | 6    |
| 022859     | 014801 | 6    |
| 022870     | 017565 | 5    |
| 022910     | 023811 | 11   |
| 022911     | 019350 | 11   |
| 022912     | 018824 | 14   |
| 022913     | 016407 | 20   |
| 022920     | 016350 | 20   |
| 022953     | 006457 | 7    |
| 022954     | 006457 | 7    |
| 022964     | 007433 | 21   |
| 023010     | 011006 | 14   |
| 023077     | 012981 | 21   |
| 023210     | 014716 | 19   |
| 023232     | 017923 | 20   |
| 023234     | 015873 | 19   |
| 023338     | 014802 | 5    |
| 023471     | 005081 | 3    |
| 023507     | 009685 | 9    |
| 023642     | 005084 | 4    |
| 023645     | 007404 | 4    |
| 023771     | 013494 | 23   |
| 023824     | 009685 | 9    |
| 023860     | 018823 | 7    |
| 023861     | 023733 | 17   |
| 024266     | 022595 | 18   |
| 024302     | 018069 | 18   |

## NTI

| Conversões | N° NTI | Pág. |
|------------|--------|------|
| 024357     | 024356 | 15   |
| 024552     | 024551 | 18   |
| 024644     | 024643 | 18   |
| 024691     | 024690 | 19   |
| 024720     | 024573 | 17   |
| 024758     | 016060 | 11   |
| 024880     | 024573 | 17   |
| 025060     | 025059 | 6    |
| 025422     | 012523 | 32   |
| 025423     | 018755 | 6    |
| 025709     | 017551 | 30   |
| 025882     | 025059 | 6    |
| 026024     | 024760 | 44   |
| 026033     | 025011 | 13   |
| 026034     | 025434 | 13   |
| 026095     | 012516 | 31   |
| 026264     | 005800 | 26   |
| 026379     | 012524 | 31   |
| 026392     | 012525 | 31   |
| 026401     | 026022 | 41   |
| 026402     | 026026 | 5    |
| 026408     | 026026 | 5    |
| 026488     | 025927 | 29   |
| 026489     | 025928 | 29   |
| 026490     | 025928 | 29   |
| 026492     | 009598 | 32   |
| 026708     | 026021 | 42   |
| 026829     | 005800 | 26   |
| 026830     | 018738 | 26   |
| 026831     | 003490 | 26   |
| 027109     | 027310 | 3    |
| 027238     | 027234 | 6    |
| 027281     | 016822 | 42   |
| 027282     | 024573 | 17   |
| 027311     | 027310 | 3    |
| 027313     | 027312 | 33   |
| 027314     | 027312 | 33   |
| 027315     | 027312 | 33   |
| 027319     | 024573 | 17   |
| 027320     | 024573 | 17   |
| 027945     | 027944 | 15   |
| 027952     | 027951 | 3    |
| 028059     | 028058 | 4    |
| 028141     | 028140 | 32   |
| 028142     | 028140 | 32   |
| 028785     | 028140 | 32   |

## SCANIA

| Conversões | N° NTI | Pág. |
|------------|--------|------|
| 10572941   | 025401 | 44   |
| 10572946   | 025401 | 44   |
| 10572951   | 025401 | 44   |
| 10574929   | 025401 | 44   |
| 10574930   | 025401 | 44   |
| 10574936   | 025401 | 44   |
| 10575182   | 001611 | 41   |
| 10575185   | 001611 | 41   |
| 1105332    | 007263 | 30   |
| 1105332 A  | 003096 | 30   |
| 1112542    | 001730 | 15   |
| 1123296    | 006044 | 28   |
| 1304161    | 009066 | 25   |
| 1320420 X  | 004241 | 36   |
| 1320420 XV | 013647 | 36   |
| 1321239    | 009242 | 40   |

## SCANIA

| Conversões | N° NTI | Pág. |
|------------|--------|------|
| 1321420    | 009744 | 25   |
| 1321420 X  | 004241 | 36   |
| 1321420 XV | 013647 | 36   |
| 1326847    | 009066 | 25   |
| 1326847 X  | 004241 | 36   |
| 1326847 XV | 013647 | 36   |
| 1331770 B  | 016462 | 42   |
| 1331770 I  | 016126 | 41   |
| 1332131    | 014256 | 34   |
| 1332503    | 003490 | 26   |
| 1334036 X  | 011231 | 35   |
| 1336159    | 006544 | 46   |
| 1336159 A  | 024507 | 47   |
| 1340404    | 014256 | 34   |
| 1342106    | 016163 | 38   |
| 1345149    | 007993 | 25   |
| 1345149 X  | 011231 | 35   |
| 1345151    | 009066 | 25   |
| 1345151 X  | 004241 | 36   |
| 1345151 XV | 013647 | 36   |
| 1348896    | 003490 | 26   |
| 1355979    | 017961 | 29   |
| 1358800    | 007263 | 30   |
| 1358800 A  | 003096 | 30   |
| 1358801    | 007263 | 30   |
| 1358801 A  | 003096 | 30   |
| 1360598    | 005800 | 26   |
| 1361136    | 007263 | 30   |
| 1361136 A  | 003096 | 30   |
| 1367453    | 018469 | 43   |
| 1369053    | 013003 | 38   |
| 1376474    | 005800 | 26   |
| 1390791    | 010295 | 35   |
| 1393332    | 006044 | 28   |
| 1400769    | 005800 | 26   |
| 1405803 R  | 025839 | 39   |
| 1421186    | 018469 | 43   |
| 1433655    | 012508 | 38   |
| 1434649    | 006044 | 28   |
| 1454590    | 018469 | 43   |
| 1455730    | 006044 | 28   |
| 1469161    | 018469 | 43   |
| 1484715    | 006282 | 47   |
| 1484715 E  | 017278 | 47   |
| 1484715 P  | 016635 | 48   |
| 1484715 PE | 018679 | 47   |
| 1484715 X  | 018975 | 47   |
| 1484807    | 009744 | 25   |
| 1484808    | 009744 | 25   |
| 1484808 X  | 004241 | 36   |
| 1484808 XV | 013647 | 36   |
| 1484809    | 009066 | 25   |
| 1484809 X  | 004241 | 36   |
| 1484809 XV | 013647 | 36   |
| 1493461    | 018855 | 43   |
| 1498124    | 010295 | 35   |
| 1505927    | 005800 | 26   |
| 1507790    | 018738 | 26   |
| 1513717    | 018469 | 43   |
| 1522377    | 006044 | 28   |
| 1523399    | 018855 | 43   |
| 1523399 R  | 018168 | 48   |
| 1523400    | 018676 | 30   |
| 1523635    | 010295 | 35   |
| 1532517    | 017961 | 29   |
| 1541982    | 012508 | 38   |

## SCANIA

| Conversões | N° NTI | Pág. |
|------------|--------|------|
| 1543633    | 017961 | 29   |
| 1545626    | 017961 | 29   |
| 1673552    | 003490 | 26   |
| 1673553    | 003490 | 26   |
| 1677877    | 003490 | 26   |
| 1725887    | 027220 | 35   |
| 1747894    | 001611 | 41   |
| 1747895 B  | 016462 | 42   |
| 1747895 I  | 016126 | 41   |
| 1754943    | 017961 | 29   |
| 1756460    | 019610 | 29   |
| 1764082    | 014715 | 38   |
| 1764085    | 010204 | 37   |
| 1767201    | 018738 | 26   |
| 1769778 R  | 024230 | 37   |
| 1784480    | 018855 | 43   |
| 1784480 R  | 018168 | 48   |
| 1800442    | 018676 | 30   |
| 1821737    | 018738 | 26   |
| 1846430    | 020391 | 38   |
| 1849429    | 025401 | 44   |
| 1878943    | 027971 | 51   |
| 1881850    | 020391 | 38   |
| 1903797 X  | 004241 | 36   |
| 1903797 XV | 013647 | 36   |
| 1903798 X  | 011231 | 35   |
| 1927825    | 018855 | 43   |
| 1927825 R  | 018168 | 48   |
| 1927829    | 018676 | 30   |
| 1927829 X  | 019271 | 39   |
| 1927829 XA | 026205 | 39   |
| 1931444    | 025401 | 44   |
| 1931444 C  | 027974 | 45   |
| 1952214    | 003486 | 35   |
| 1952214 X  | 000983 | 35   |
| 1953495 X  | 004241 | 36   |
| 1953495 XV | 013647 | 36   |
| 2023059    | 025401 | 44   |
| 2023059 C  | 027974 | 45   |
| 2023059 X  | 025066 | 46   |
| 2037304    | 025401 | 44   |
| 2037304 C  | 027974 | 45   |
| 20405258   | 005800 | 26   |
| 204525     | 001730 | 15   |
| 2082082    | 025401 | 44   |
| 2082082 C  | 027974 | 45   |
| 2090529 R  | 024230 | 37   |
| 2131963    | 025401 | 44   |
| 2131963 C  | 027974 | 45   |
| 2181643 R  | 024230 | 37   |
| 2290706    | 025401 | 44   |
| 2290706 C  | 027974 | 45   |
| 2340075    | 027971 | 51   |
| 2392193    | 025401 | 44   |
| 2392193 C  | 027974 | 45   |
| 2392193 X  | 025066 | 46   |
| 2392281    | 025401 | 44   |
| 2392281 C  | 027974 | 45   |
| 2441305    | 025401 | 44   |
| 2441305 C  | 027974 | 45   |
| 244441 X   | 000983 | 35   |
| 2450508    | 025401 | 44   |
| 2450508 C  | 027974 | 45   |
| 2555088    | 018855 | 43   |
| 2555088 R  | 018168 | 48   |
| 2612292    | 025401 | 44   |

## SCANIA

| Conversões | N° NTI | Pág. |
|------------|--------|------|
| 2612292 C  | 027974 | 45   |
| 2612292 X  | 025066 | 46   |
| 2825344    | 025401 | 44   |
| 2825344 C  | 027974 | 45   |
| 2825405    | 027971 | 51   |
| 284015     | 001192 | 25   |
| 298953     | 001611 | 41   |
| 338923     | 001611 | 41   |
| 345159     | 001611 | 41   |
| 360717     | 001611 | 41   |
| 360719     | 001611 | 41   |
| 363808     | 001730 | 15   |
| 371612 B   | 016462 | 42   |
| 371612 I   | 016126 | 41   |
| 374116 B   | 016462 | 42   |
| 374116 I   | 016126 | 41   |
| 389012     | 003490 | 26   |
| 389894     | 002989 | 45   |
| 522377     | 006044 | 28   |
| 523669     | 001730 | 15   |
| 523670     | 001730 | 15   |
| 532517     | 017961 | 29   |
| 537194     | 001887 | 24   |
| 537194 A   | 003513 | 24   |
| 537194 D   | 015165 | 24   |
| 537194 F   | 015166 | 24   |
| 538919     | 001921 | 24   |
| 550453     | 001955 | 48   |
| 550455     | 001956 | 48   |
| 550456     | 001957 | 46   |
| 550464     | 003499 | 39   |
| 550465     | 006544 | 46   |
| 550465 A   | 024507 | 47   |
| 550465 P   | 016634 | 47   |
| 550550     | 016163 | 38   |
| 551572     | 006044 | 28   |
| 572941     | 025401 | 44   |
| 572946     | 025401 | 44   |
| 572951     | 025401 | 44   |
| 574929     | 025401 | 44   |
| 574930     | 025401 | 44   |
| 574936     | 025401 | 44   |
| 574937     | 025401 | 44   |
| 574942     | 025401 | 44   |
| 574943     | 025401 | 44   |
| 574944     | 025401 | 44   |
| 574952     | 025401 | 44   |
| 574995     | 025401 | 44   |

## VARGA

| Conversões | N° NTI | Pág. |
|------------|--------|------|
| RCCE00181  | 019223 | 23   |

## VOLVO

| Conversões | N° NTI | Pág. |
|------------|--------|------|
| 1069205 VI | 016820 | 42   |
| 1521371 VI | 016822 | 42   |
| 1521587 V  | 026322 | 34   |
| 1521976 V  | 026322 | 34   |
| 1526523 V  | 003254 | 43   |
| 1526816 V  | 007438 | 25   |
| 1526817 VX | 007721 | 36   |
| 1527355 VX | 007721 | 36   |
| 1527363 V  | 006051 | 25   |

## VOLVO

| Conversões  | N° NTI | Pág. |
|-------------|--------|------|
| 1527363 VX  | 007724 | 36   |
| 1527463 VX  | 007724 | 36   |
| 1581209 V   | 003515 | 32   |
| 15812092 V  | 003515 | 32   |
| 1614351 V   | 003515 | 32   |
| 16143513 V  | 003515 | 32   |
| 1620462 V   | 003515 | 32   |
| 16204620 V  | 003515 | 32   |
| 1628218 V   | 009624 | 31   |
| 16282188 V  | 009624 | 31   |
| 1652751 V   | 017478 | 37   |
| 1652857 V   | 015102 | 26   |
| 1655435 VI  | 016822 | 42   |
| 1655639 V   | 003254 | 43   |
| 1656239 V   | 015102 | 26   |
| 1662959 V   | 006051 | 25   |
| 1668501 VI  | 016822 | 42   |
| 1669422 V   | 024281 | 34   |
| 1669488 V   | 003515 | 32   |
| 16694887 V  | 003515 | 32   |
| 1671953 VI  | 016822 | 42   |
| 1672129 VI  | 017175 | 41   |
| 1673067 V   | 003254 | 43   |
| 20365523 V  | 017478 | 37   |
| 20524584 VI | 017175 | 41   |
| 20524585 VI | 017176 | 41   |
| 20528900 V  | 022635 | 27   |
| 20553368 V  | 024837 | 29   |
| 205535588 V | 014970 | 31   |
| 20553587 V  | 014970 | 31   |
| 20569775 V  | 027973 | 17   |
| 20583314 V  | 027973 | 17   |
| 20806451 V  | 024333 | 33   |
| 20812087 V  | 028134 | 32   |
| 20835246 V  | 014970 | 31   |
| 20843686 V  | 018151 | 34   |
| 20843687 V  | 018151 | 34   |
| 21284852 V  | 018151 | 34   |
| 21320923 V  | 024333 | 33   |
| 21320929 V  | 028134 | 32   |
| 21465235 V  | 024333 | 33   |
| 21465238 V  | 028134 | 32   |
| 21580956 V  | 024333 | 33   |
| 21580968 V  | 028134 | 32   |
| 21580972 V  | 028134 | 32   |
| 21580977 V  | 024333 | 33   |
| 22085052 V  | 024760 | 44   |
| 22085058 V  | 024760 | 44   |
| 22279199 V  | 027973 | 17   |
| 22279233 V  | 027973 | 17   |
| 22317371 VI | 017176 | 41   |
| 22429963 V  | 028134 | 32   |
| 22440437 V  | 028134 | 32   |
| 22809232 V  | 028134 | 32   |
| 22809232 VR | 026334 | 46   |
| 23105448 V  | 024760 | 44   |
| 23105541 V  | 024760 | 44   |
| 23417523 V  | 028134 | 32   |
| 23417526 V  | 028134 | 32   |
| 267321 V    | 003254 | 43   |
| 267532 V    | 003254 | 43   |
| 271194 V    | 003517 | 49   |
| 273660 V    | 002531 | 39   |
| 276820 V    | 017478 | 37   |
| 276833 V    | 018964 | 39   |
| 3092050 V   | 017478 | 37   |

## VOLVO

| Conversões   | N° NTI | Pág. |
|--------------|--------|------|
| 3092575 V    | 017474 | 36   |
| 3093098 V    | 014669 | 48   |
| 3093099 V    | 006048 | 48   |
| 3093100 V    | 006048 | 48   |
| 3093230 V    | 017478 | 37   |
| 3094523 V    | 018964 | 39   |
| 3094550 V    | 006048 | 48   |
| 3094730 V    | 018964 | 39   |
| 3192126 VI   | 017176 | 41   |
| 3192696 V    | 014970 | 31   |
| 8112202 V    | 003254 | 43   |
| 8126730 V    | 003515 | 32   |
| 8127721 V    | 002531 | 39   |
| 8171512 V    | 027973 | 17   |
| 8171720 VI   | 017175 | 41   |
| 8171721 VI   | 017176 | 41   |
| 8172824 V    | 014970 | 31   |
| 85002040 V   | 024760 | 44   |
| 85002343 V   | 028134 | 32   |
| 85003219 VI  | 016822 | 42   |
| 85003685 V   | 028134 | 32   |
| 85003696 V   | 028134 | 32   |
| 85003699 V   | 028134 | 32   |
| 85008040 V   | 024760 | 44   |
| 85009696 V   | 028134 | 32   |
| 85009699 V   | 028134 | 32   |
| 85013166 V   | 028134 | 32   |
| 85013339 V   | 014970 | 31   |
| 85019166 V   | 028134 | 32   |
| 85020472 V   | 028134 | 32   |
| 85022454 V   | 028134 | 32   |
| 85026472 V   | 028134 | 32   |
| 85102142 V   | 009877 | 49   |
| 85102142 VA  | 012772 | 49   |
| 85102142 VP  | 016633 | 49   |
| 85117701 V   | 027973 | 17   |
| K628492AM VI | 017175 | 41   |

## VW

| Conversões | N° NTI | Pág. |
|------------|--------|------|
| 2P0721405  | 025296 | 28   |
| 2R0253853B | 005081 | 3    |
| 2RD253853  | 005081 | 3    |
| 2RD253853B | 005081 | 3    |
| 2RD253853C | 005081 | 3    |
| 2RD253853D | 005081 | 3    |
| 2RE253853  | 005081 | 3    |
| 2RE253853B | 005081 | 3    |
| 2RH253853  | 005084 | 4    |
| 2RH253853C | 005084 | 4    |
| 2RK253853  | 007404 | 4    |
| 2RP141147A | 005056 | 35   |
| 2RP253853B | 005084 | 4    |
| 2RP253853C | 005084 | 4    |
| 2RP253861  | 005095 | 27   |
| 2S2253853A | 017731 | 34   |
| 2S2253853B | 013935 | 34   |
| 2S2298109  | 017728 | 26   |
| 2T0253853A | 005084 | 4    |
| 2T2253853  | 013935 | 34   |
| 2TA253853B | 005081 | 3    |
| 2TA253853C | 005081 | 3    |
| 2TA253861  | 005097 | 3    |
| 2TD253853  | 005084 | 4    |
| 2TK253853  | 005081 | 3    |

## VW

| Conversões | N° NTI | Pág. |
|------------|--------|------|
| 2TK253861  | 005095 | 27   |
| 2VB721405  | 013494 | 23   |
| 2W0253853  | 005084 | 4    |
| 4214299160 | 005084 | 4    |
| 8845032820 | 005084 | 4    |
| TAF253861  | 005096 | 27   |
| TAR253853  | 005084 | 4    |
| TAR253853A | 005084 | 4    |
| TAR721405  | 004560 | 23   |
| TE3721405  | 004560 | 23   |
| TEG253853B | 005084 | 4    |
| TEG253853C | 005084 | 4    |
| TF3721405  | 004560 | 23   |
| TLG253853  | 005084 | 4    |
| TLG253853A | 005084 | 4    |
| TMG253853  | 007404 | 4    |
| TMG253853A | 007404 | 4    |
| TN4253861  | 005094 | 3    |
| TRA253853  | 005084 | 4    |
| TRA253853A | 005084 | 4    |

## WABCO

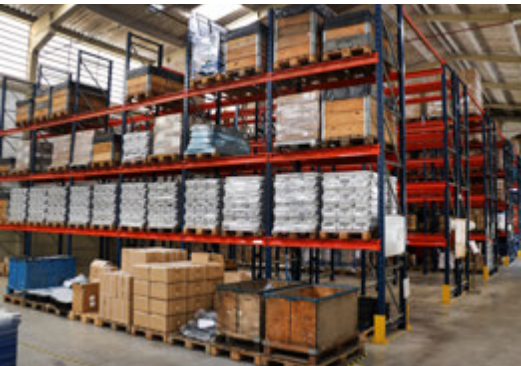
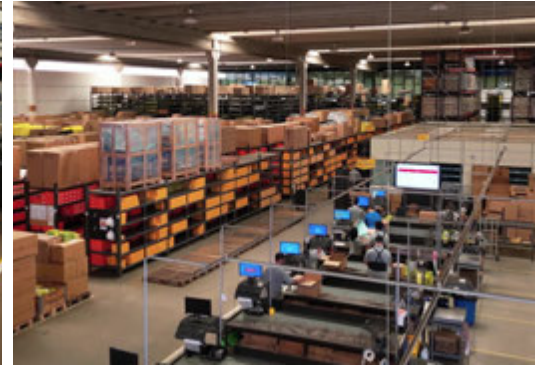
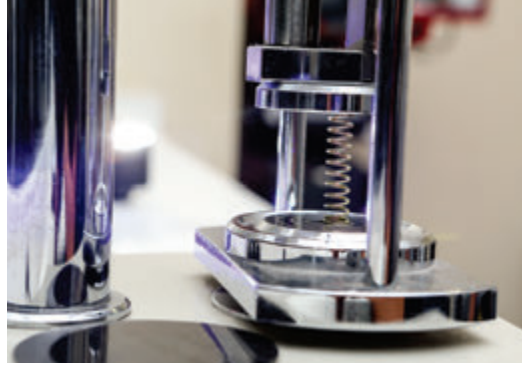
| Conversões    | N° NTI | Pág. |
|---------------|--------|------|
| 4213500830    | 027310 | 3    |
| 4213500870    | 027310 | 3    |
| 4213509352    | 028058 | 4    |
| 4213520820    | 027951 | 3    |
| 4411005392    | 018154 | 14   |
| 8845029614    | 009685 | 9    |
| 8845037280 A  | 013189 | 5    |
| 8913505204    | 011006 | 14   |
| 8995061502    | 007719 | 10   |
| 9650019022    | 017900 | 4    |
| 9700510010    | 019441 | 14   |
| 9700510010 C  | 023731 | 8    |
| 9700510010 CN | 023811 | 11   |
| 9700510010 P  | 019350 | 11   |
| 9700510134    | 006456 | 7    |
| 9700510174    | 017627 | 8    |
| 9700510250    | 019385 | 5    |
| 9700510494    | 024689 | 10   |
| 9700511000    | 017565 | 5    |
| 9700511000 C  | 018823 | 7    |
| 9700511000 T  | 018824 | 14   |
| 9700511070 A  | 013189 | 5    |
| 9700511200    | 019385 | 5    |
| 9700511202    | 016060 | 11   |
| 9700511250    | 014801 | 6    |
| 9700511280 A  | 013189 | 5    |
| 9700511514    | 012033 | 8    |
| 9700511630    | 014801 | 6    |
| 9700511900    | 018755 | 6    |
| 9700512170    | 026026 | 5    |
| 9700512270    | 015449 | 6    |
| 9700512270 C  | 016534 | 8    |
| 9700512282    | 018559 | 11   |
| 9700512310    | 015449 | 6    |
| 9700513554    | 018642 | 14   |
| 9700514310    | 014802 | 5    |
| 9700515994    | 023882 | 7    |
| 9700516282    | 007415 | 9    |
| 9700516420    | 025059 | 6    |
| 9700516420 X  | 025011 | 13   |
| 9700516420 XA | 025434 | 13   |
| 9700517332    | 024593 | 9    |

## WABCO

| Conversões    | N° NTI | Pág. |
|---------------|--------|------|
| 9700518230 R  | 025662 | 13   |
| 9700519062    | 004109 | 13   |
| 9700519062 P  | 007179 | 10   |
| 9700519062 PG | 007187 | 12   |
| 9700519172    | 007776 | 11   |
| 9700519542    | 004109 | 13   |
| 9700519542 P  | 007179 | 10   |
| 9700519552    | 004109 | 13   |
| 9700519562    | 004110 | 12   |
| 9700519562 P  | 007179 | 10   |
| 9700519562 PG | 007187 | 12   |
| 9700519702 X  | 025011 | 13   |
| 9700519702 XA | 025434 | 13   |
| 9700519742    | 007423 | 13   |
| 9700519742 P  | 007424 | 11   |
| 9700519742 PG | 007461 | 12   |
| 9700519832    | 004109 | 13   |
| 9700519952    | 018364 | 12   |
| 9701500010    | 019441 | 14   |
| 9701500010 P  | 019350 | 11   |
| 9701509232 JB | 026083 | 10   |
| 9701509232 P  | 019350 | 11   |
| 9709016312    | 012713 | 9    |
| 9709020124    | 024436 | 7    |
| 9709020174 C  | 018823 | 7    |
| 9709020174 T  | 018824 | 14   |
| 9709020274    | 013204 | 8    |
| 9709030104    | 006457 | 7    |

## ZF

| Conversões   | N° NTI | Pág. |
|--------------|--------|------|
| 0501211805   | 024189 | 50   |
| 0501211805 P | 024479 | 51   |
| 0501216319 X | 025015 | 50   |
| 0501217253 X | 024785 | 50   |
| 0750112253   | 016387 | 37   |
| 1316051835 C | 024238 | 45   |
| 23814        | 023814 | 46   |
| 24872        | 024872 | 10   |





[www.ntifreios.com.br](http://www.ntifreios.com.br)

EMPRESA CERTIFICADA  
CERTIFIED COMPANY ISO 9001:2015

